

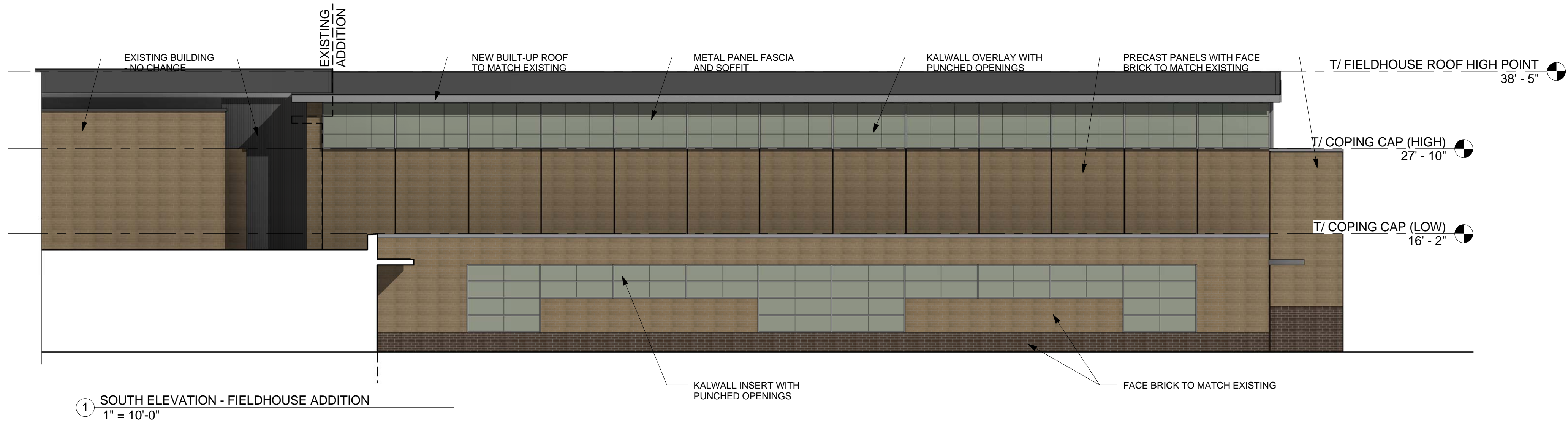
# ELEVATIONS - WEST HIGH

## Additions and Renovations to West High School

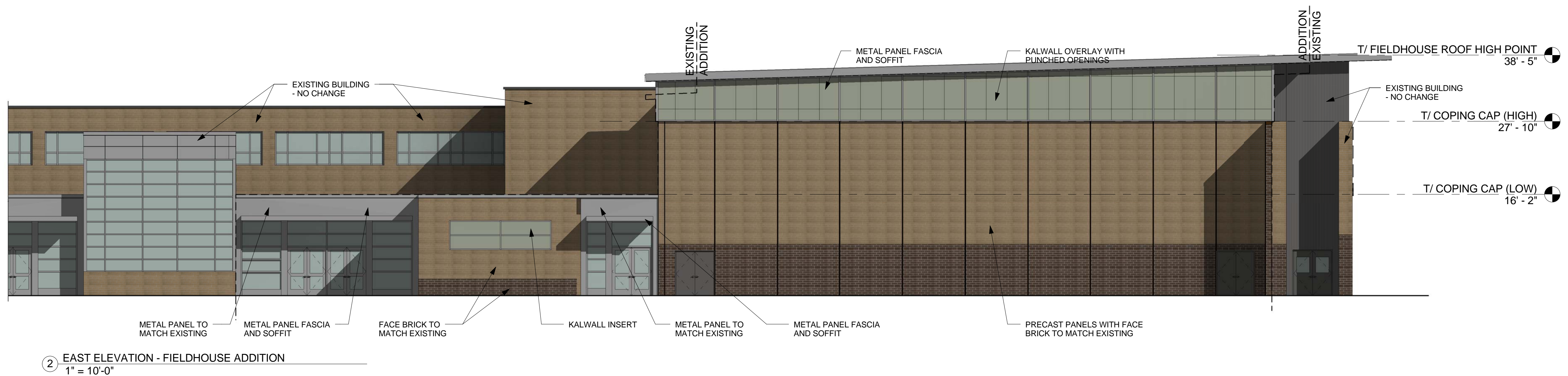
At:  
West High School  
1201 West New York Street  
Aurora, Illinois 60506

District Office  
80 South River Street  
Aurora, Illinois 60506

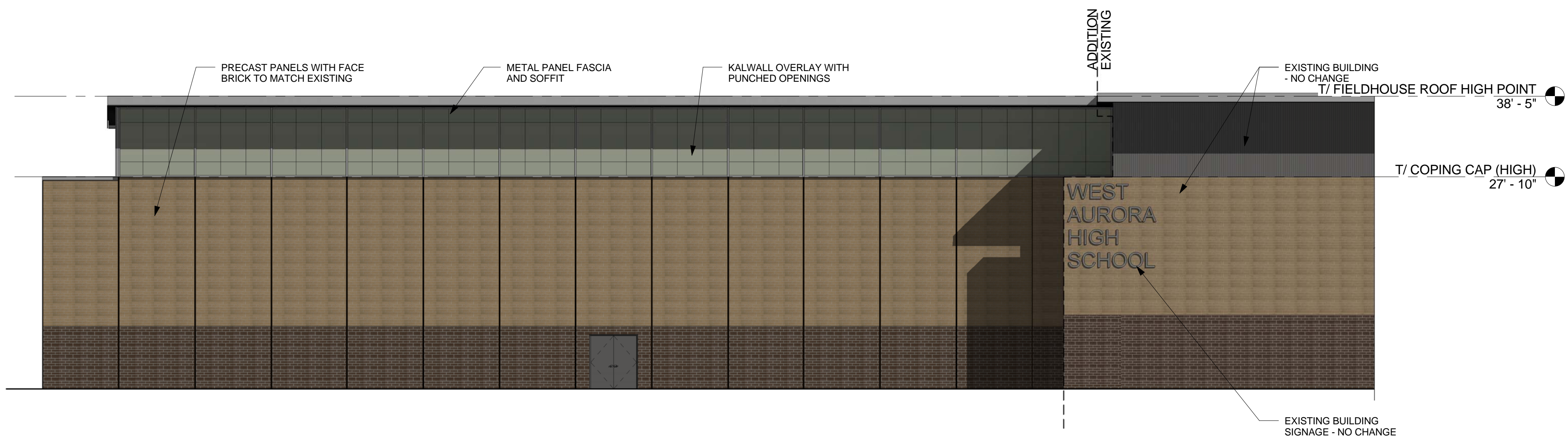
For  
West Aurora School District  
#129



① SOUTH ELEVATION - FIELDHOUSE ADDITION  
1" = 10'-0"



② EAST ELEVATION - FIELDHOUSE ADDITION  
1" = 10'-0"



③ NORTH ELEVATION - FIELDHOUSE ADDITION  
1" = 10'-0"

ELEVATION DATA TABLE: ELEVATIONS		
Description	Value	Unit
a) Building Height	EXISTING - 43.33	feet
b) Grade Elevation	695.50	feet
c) Building Square Footage by Floor	EXISTING - 332,697	Square feet
	PROPOSED - 11,724	Square feet
	EXISTING - 157,683	Square feet
	NO CHANGE	Square feet
d) Building Square Footage	EXISTING - 490,380	Square feet
	PROPOSED - 502,104	Square feet

SIGNAGE DATA TABLE: GROUND SIGNAGE				
Ground Sign #	Description	Value	Unit	
1	i) Length of street frontage - on which sign is located		feet	
	ii) Width of Sign Face		feet	
	iii) Height of Sign Face		feet	
	iv) Square Footage of Sign Face		Square feet	
	v) Height of Sign (over ...)		feet	
	vi) Type of Sign	<b>DOES NOT APPLY</b>		
	vii) Type of Sign Base			
	viii) Is there a digital display			
	If yes then, Location of Digital Display on the sign			
		Height of digital Display		
	Width of Digital Display			
	Square footage of Digital Display			
	Percent of Digital Display Sign Coverage			

SIGNAGE DATA TABLE: WALL SIGNAGE			
Wall Sign #	Description	Value	Unit
1	i) Width of Facade - on which Sign is Located		feet
	ii) Height of Facade - on which sign is located		feet
	iii) Square Footage of Sign Face		Square feet
	iv) Width of Sign Face		feet
	v) Height of Sign Face		feet
	vi) Square Footage of Sign Face		Square feet
	vii) Percent of Sign Coverage - Facade on which Sign is Located		Percent

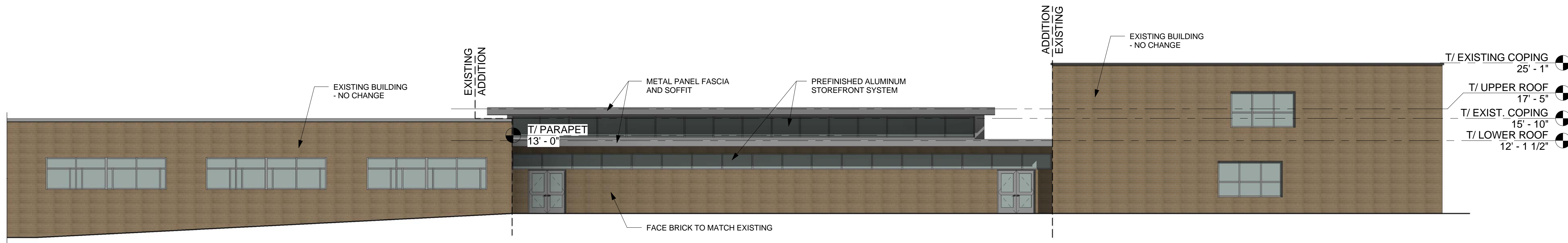
Copyright 2015 StudioGC, Inc.

NO.	ISSUED FOR:	DATE
	SPECIAL USE SUBMITTAL	09/09/15
	REVISED PER PRELIMINARY CITY COMMENTS	10/07/15

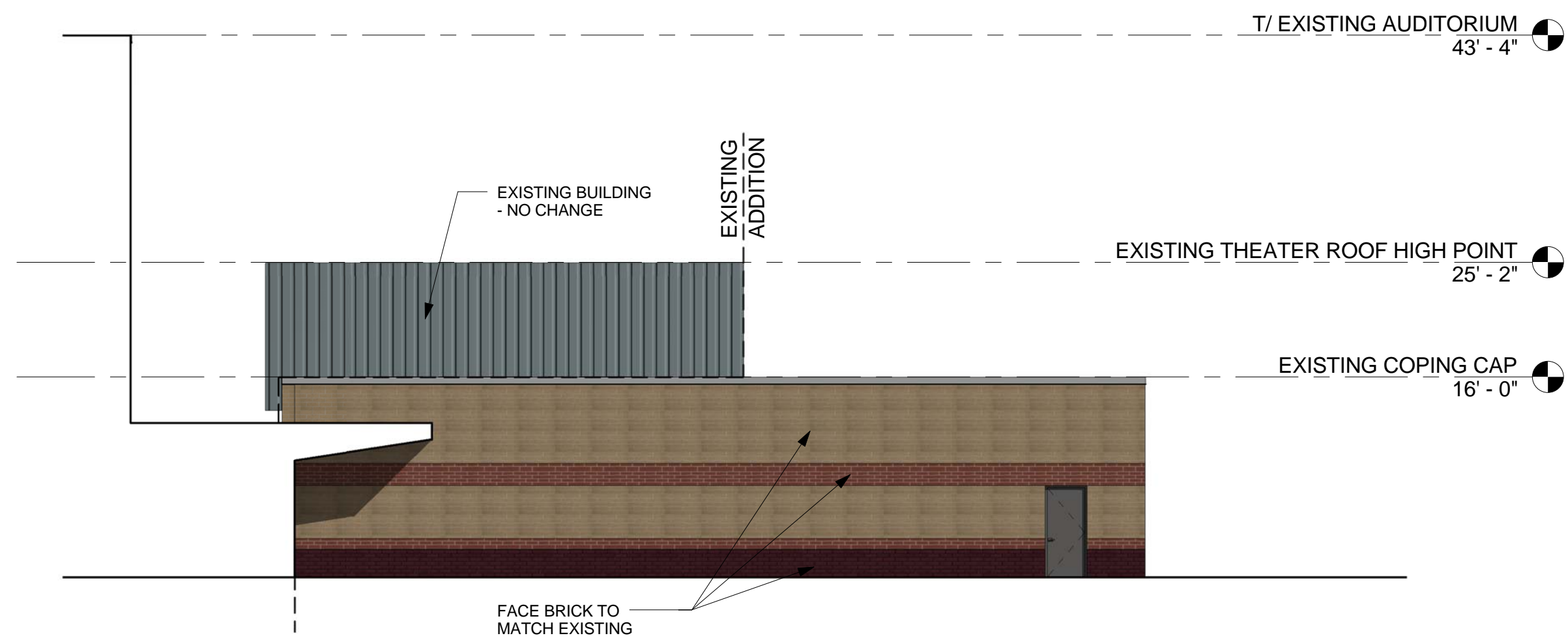
## BUILDING AND SIGNAGE ELEVATIONS



# ELEVATIONS - WEST HIGH



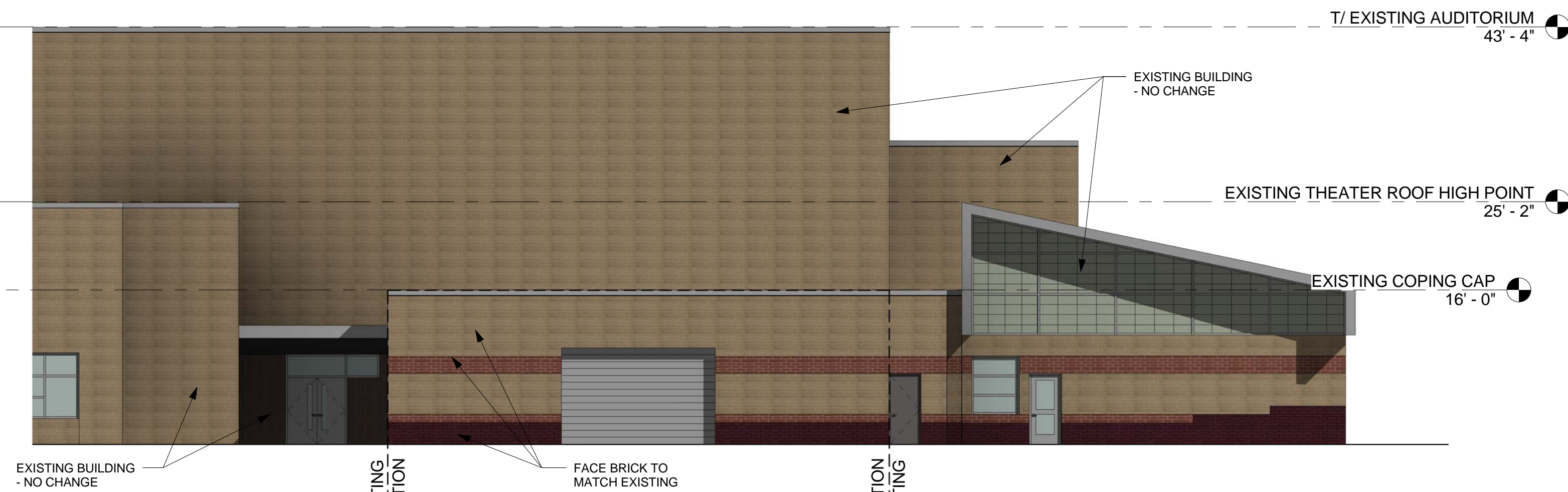
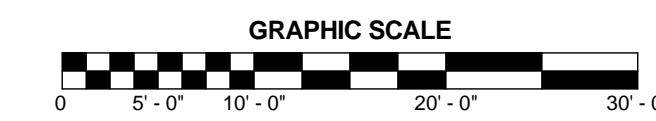
1 WEST ELEVATION - CLASSROOM ADDITION  
1" = 10'-0"



2 WEST ELEVATION - BLACK BOX ADDITION  
1" = 10'-0"



3 EAST ELEVATION - BLACK BOX ADDITION  
1" = 10'-0"



4 SOUTH ELEVATION - BLACK BOX ADDITION  
1" = 10'-0"

ELEVATION DATA TABLE: ELEVATIONS			
Description	Value	Unit	
a) Building Height	EXISTING - 43.33	feet	
b) Grade Elevation	695.50	feet	
c) Building Square Footage by Floor	EXISTING - 332,697	Square feet	2ND - 1ST
	PROPOSED - 11,724	Square feet	
	EXISTING - 157,683	Square feet	
	NO CHANGE	Square feet	
d) Building Square Footage	EXISTING - 490,380	Square feet	
	PROPOSED - 502,104	Square feet	

SIGNAGE DATA TABLE: GROUND SIGNAGE				
Ground Sign #	Description	Value	Unit	
1	i) Length of street frontage - on which sign is located		feet	
	ii) Width of Sign Face		feet	
	iii) Height of Sign Face		feet	
	iv) Square Footage of Sign Face		Square feet	
	v) Height of Sign (over ground)		feet	
	vi) Type of Sign	<b>DOES NOT APPLY</b>		
	vii) Type of Sign Base			
	viii) Is there a digital display			
	If yes then, Location of Digital Display on the sign			
	Height of digital Display			
	Width of Digital Display			
Square footage of Digital Display				
Percent of Digital Display Sign Coverage				

SIGNAGE DATA TABLE: WALL SIGNAGE			
Wall Sign #	Description	Value	Unit
1	i) Width of Facade - on which Sign is Located		feet
	ii) Height of Facade - on which sign is located		feet
	iii) Square footage of Facade		Square feet
	iv) Width of Sign Face		feet
	v) Height of Sign Face		feet
	vi) Square Footage of Sign Face		Square feet
	vii) Percent of Sign Coverage - Facade on which Sign is Located		Percent

At:  
West High School  
1201 West New York Street  
Aurora, Illinois 60506

District Office  
80 South River Street  
Aurora, Illinois 60506

For  
West Aurora  
School District  
#129

Copyright 2015 StudioGC, Inc.

NO.	ISSUED FOR:	DATE
	SPECIAL USE SUBMITTAL	09/09/15
	REVISED PER PRELIMINARY CITY COMMENTS	10/07/15

BUILDING AND SIGNAGE  
ELEVATION

C:\Users\jgromet\Documents\West High Base File - Chicago\met\1.rvt