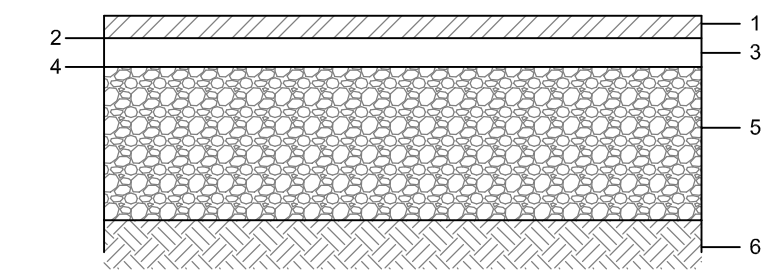
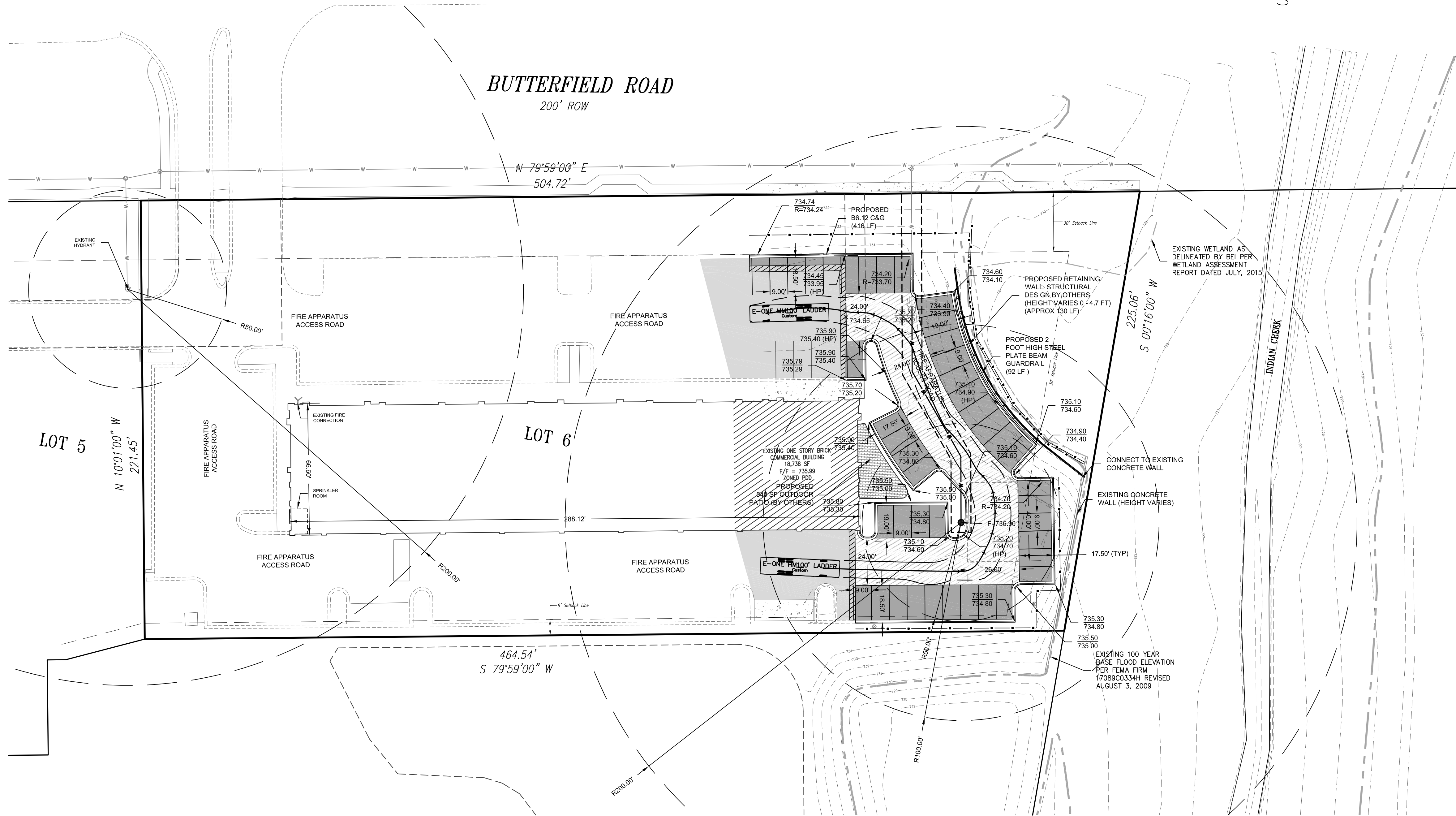


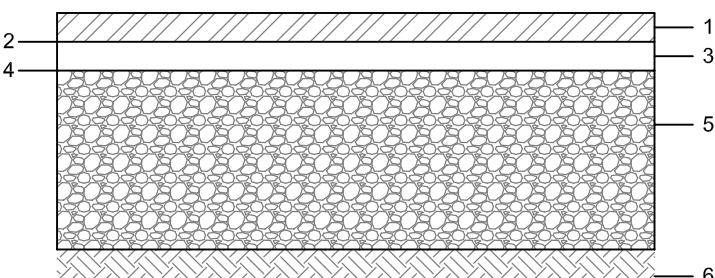
FIRE ACCESS PLAN - BUTTERFIELD VILLAGE CENTER LOT 6 - PARKING LOT IMPROVEMENTS



1. HMA SURFACE COURSE, 1 1/2" SUPERPAVE, MIX D, N50
2. PRIME COAT (0.40 GAL/SY)
3. HMA BINDER COURSE, 2 1/4" SUPERPAVE, IL-19, N50
4. PRIME COAT (0.40 GAL/SY)
5. COMPACTED AGGREGATE, TY B BASE COURSE, 10", 95% MODIFIED PROCTOR
6. COMPACTED SUBGRADE, 95% MODIFIED PROCTOR

NOTES:
1. ALL COMPACTION SHALL BE 95% MAXIMUM DRY DENSITY, AS DETERMINED BY MODIFIED PROCTOR TEST, ASTM D1557.

STANDARD DUTY ASPHALT PAVEMENT SECTION

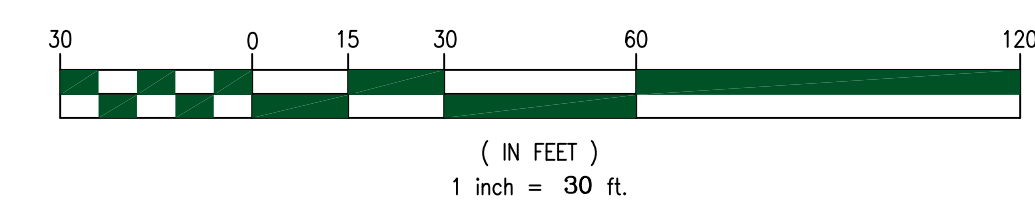


1. HMA SURFACE COURSE, 2 1/4" SUPERPAVE, MIX D, N50
2. PRIME COAT (0.40 GAL/SY)
3. HMA BINDER COURSE, 2 1/4" SUPERPAVE, IL-19, N50
4. PRIME COAT (0.40 GAL/SY)
5. COMPACTED AGGREGATE, TY B BASE COURSE, 12", 95% MODIFIED PROCTOR
6. COMPACTED SUBGRADE, 95% MODIFIED PROCTOR

NOTES:
1. ALL COMPACTION SHALL BE 95% MAXIMUM DRY DENSITY, AS DETERMINED BY MODIFIED PROCTOR TEST, ASTM D1557.

HEAVY DUTY ASPHALT PAVEMENT SECTION

- NOTES:
1. BUILDING HEIGHT = 28'-10"
 2. BUILDING AREA = 18,632 SF
 3. NATURE OF BUSINESS: COMMERCIAL BUILDING WITH NO RACK STORAGE & NO COMBUSTIBLE MATERIALS OVER 12' IN HEIGHT, CLEARANCE OF SPRINKLER HEADS SHALL BE A MINIMUM OF 18"
 4. BUILDING IS FIRE SUPPRESSED WITH SPRINKLER SYSTEM, FIRE ALARM SYSTEMS, AND FIRE EXTINGUISHERS.



- EXISTING CONCRETE
- EXISTING ASPHALT PAVEMENT
- STANDARD DUTY ASPHALT PAVEMENT (673 SY)
- HEAVY DUTY ASPHALT PAVEMENT (616 SY)
- 3 FOOT WIDE BUTT JOINT (50 SY)
- OUTDOOR PATIO (BY OTHERS) (540 SF)

Fire Access Plan Data Table		
Description	Value	Unit
a) Building Height	29.00	feet
b) Building Square Footage (typical)	18,632	square feet
c) Building fire suppression information including any proposed use of sprinkler systems, fire alarm systems, whether fire extinguishers are needed: BUILDING IS FIRE SUPPRESSED WITH SPRINKLER SYSTEM, FIRE ALARM SYSTEMS, AND FIRE EXTINGUISHERS.		
d) General description of business to be conducted within each building including: will there be rack storage in the building, will there be storage of combustible materials over twelve feet in height, clearance of sprinkler heads and stored materials (18 inch minimum): EXISTING COMMERCIAL BUILDING WITH NO RACK STORAGE & NO COMBUSTIBLE MATERIALS OVER 12' IN HEIGHT, CLEARANCE OF SPRINKLER HEADS IS 18"		

Civil Engineering & Land Development Consulting
26316 Mapleview Drive
Plainfield, IL 60585
815.577.1707 T 815.577.2895 F
www.cookengr.com

#	DATE	REVISION DESCRIPTION
1	06/02/2017	PER CITY OF AURORA APPLICATION COMPLETENESS
2	06/21/2017	PER CITY OF AURORA APPLICATION COMPLETENESS
3	07/10/2017	PER CITY OF AURORA APPLICATION COMPLETENESS
4	07/13/2017	PER CITY OF AURORA FIRE PREVENTION BUREAU
5		
6		
7		
8		
9		
10		

FIRE PLAN - BUTTERFIELD VILLAGE CENTER, LOT 6
PARKING LOT IMPROVEMENTS
SEC BUTTERFIELD RD & KIRK RD
AURORA, IL

PREPARED FOR
BUTTERFIELD VILLAGE CTR
P.O. BOX 1339
ST. CHARLES, IL 60174
630.675.5260 (T)
630.710.2149 (F)
MR. ANDY KOBLER

CEG JOB NUMBER
2014-103-102
SCALE: 1" = 30'
DRAWN BY: EKH
CHECKED BY: MDC
DATE: 04/26/2017

SHEET:
1 of 1