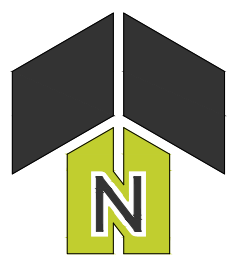


PLAT OF VACATION

LOCATED IN THE SOUTHEAST QUARTER OF SECTION 12, TOWNSHIP 38 NORTH,
RANGE 7 EAST OF THE THIRD PRINCIPAL MERIDIAN,
CITY OF AURORA, COUNTY OF KANE, STATE OF ILLINOIS

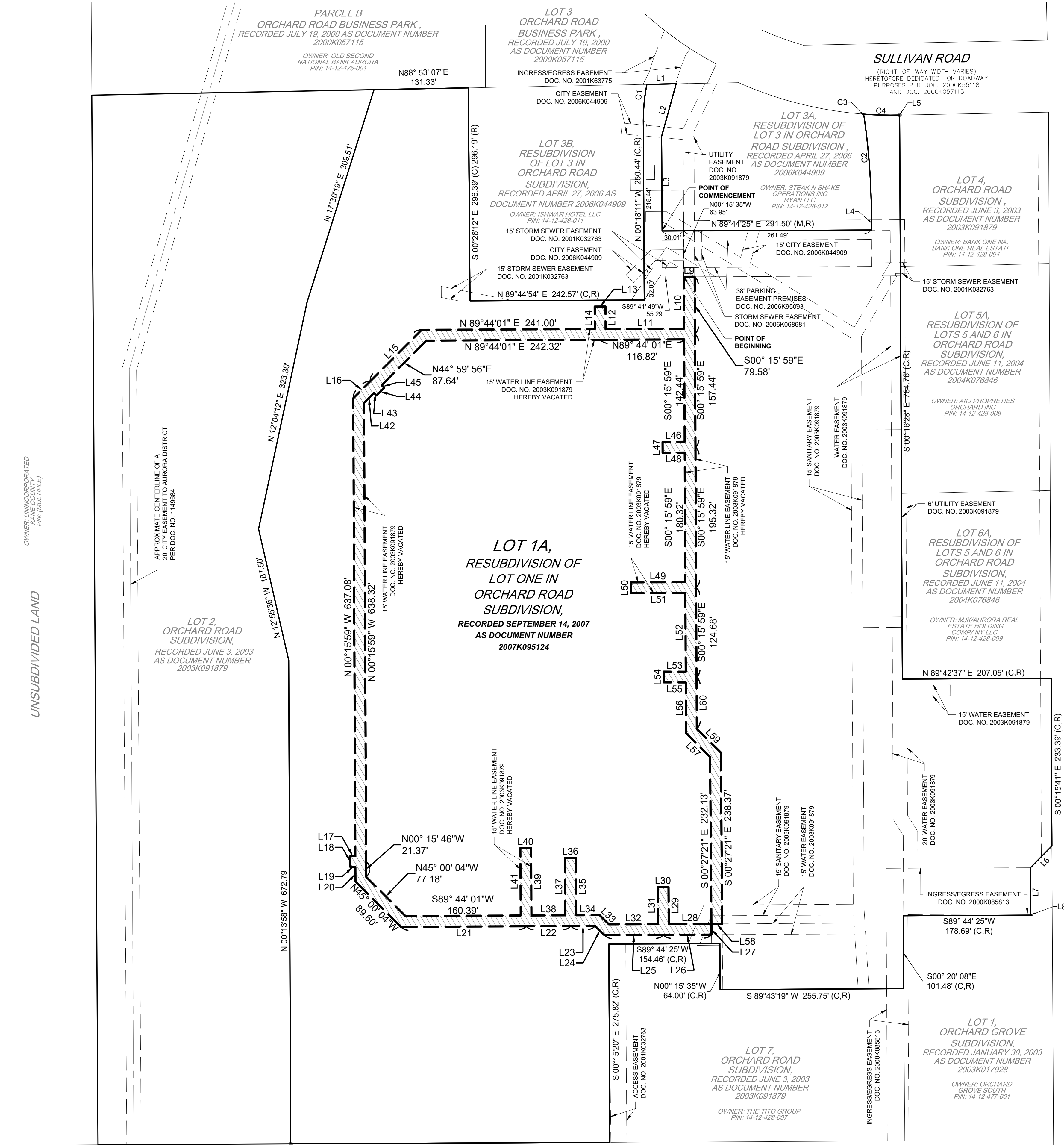
City Resolution: _____
Passed on: _____



0 80' 160'
1" = 80' (HORIZONTAL)

LEGEND

BOUNDARY LINE =	_____
R.O.W. LINE =	_____
LOT LINE =	_____
EX. EASEMENT LINE =	_____
EX. EASEMENT CENTER LINE =	_____
EASEMENT HEREBY VACATED =	_____



Line Table		
Line #	Direction	Length
L9	N89° 44' 14"E	15.00'
L10	N00° 15' 59"W	72.08'
L11	N89° 44' 01"W	109.32'
L12	S00° 15' 59"E	31.30'
L13	N89° 44' 01"E	15.00'
L14	N00° 15' 59"W	31.30'
L15	N44° 59' 56"E	101.32'
L16	N44° 59' 56"E	33.38'
L17	N89° 44' 01"E	7.00'
L18	N00° 15' 59"W	15.00'
L19	S89° 44' 01"W	7.00'
L20	N00° 15' 46"W	20.04'
L21	S89° 44' 01"W	174.15'
L22	S89° 44' 01"W	62.23'
L23	S89° 44' 01"W	33.91'

Line Table		
Line #	Direction	Length
L24	N45° 15' 59"W	18.18'
L25	S89° 44' 01"W	81.96'
L26	S89° 44' 01"W	67.01'
L27	S00° 27' 21"E	15.00'
L28	S89° 44' 01"W	59.47'
L29	N00° 15' 59"W	51.59'
L30	S89° 44' 01"W	15.00'
L31	S00° 15' 59"E	51.59'
L32	S89° 44' 01"W	68.24'
L33	N45° 15' 59"W	18.18'
L34	S89° 44' 01"W	32.63'
L35	N00° 15' 59"W	80.07'
L36	S89° 44' 01"W	15.00'
L37	S00° 15' 59"E	80.07'
L38	S89° 44' 01"W	47.23'

Line Table		
Line #	Direction	Length
L39	N00° 15' 59"W	93.85'
L40	S89° 44' 01"W	15.00'
L41	S00° 15' 59"E	93.85'
L42	N44° 59' 56"E	19.62'
L43	S45° 00' 04"E	5.24'
L44	N44° 59' 56"E	15.00'
L45	N45° 00' 04"W	5.24'
L46	S89° 44' 01"W	30.75'
L47	S00° 15' 59"E	15.00'
L48	N89° 44' 01"E	30.75'
L49	S89° 44' 01"W	76.00'
L50	S00° 15' 59"E	15.00'
L51	N89° 44' 01"E	76.00'
L52	S00° 15' 59"E	109.61'
L53	N89° 45' 59"W	30.68'

Line Table		
Line #	Direction	Length
L54	S00° 14' 01"W	15.00'
L55	S89° 45' 59"E	30.82'
L56	S00° 15' 59"E	70.55'
L57	S45° 15' 59"E	47.18'
L58	S89° 44' 01"W	15.00'
L59	S45° 15' 59"E	47.16'
L60	S00° 15' 59"E	71.77'

GENERAL NOTES

- DISTANCES ARE MARKED IN FEET AND DECIMAL PLACES THEREOF. MEASUREMENTS SHOWN IN PARENTHESES (XXX) ARE RECORD VALUES.
- DIMENSIONS ALONG CURVED LINES ARE ARC LENGTHS (L), RADII (R) AND CHORD BEARING AND LENGTH (CH).
- NO MEASUREMENT SHALL BE ASSUMED BY SCALE. MEASUREMENT

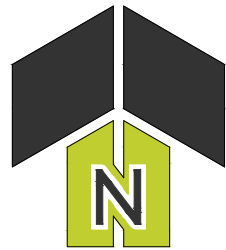
Development Data Table: Plat of Vacation		
Description	Value	Unit
a) Tax/Parcel Identification Number(s) (PINs): 14-12-428-014		
b) Right of way being Vacated	0.00	Acres
c) Easement being Vacated	5.25	Square Feet
	228,705	Square Feet

CURVE TABLE				
Curve #	RADIUS	LENGTH	CHORD BEARING	CHORD DIST
C1	250.00'	50.04'	N05°40'30"E	49.95'
C2	1000.00'	133.87'	S04°08'49"E	133.77'
C3	50.00'	7.49'	S12°13'35"E	7.48'
C4	525.00'	49.94'	N88°26'56"W	49.92'

Line Table		
Line #	Direction	Length
L1	S88° 53' 07"W	40.79'
L2	S15° 27' 40"W	76.07'
L3	S00° 18' 11"E	131.52'
L4	N00° 29' 08"W	20.54'
L5	N88° 49' 33"E	0.60'
L6	S44° 44' 19"W	42.43'
L7	S00° 19' 16"E	64.46'
L8	N43° 59' 14"W	2.26'

PLAT OF VACATION

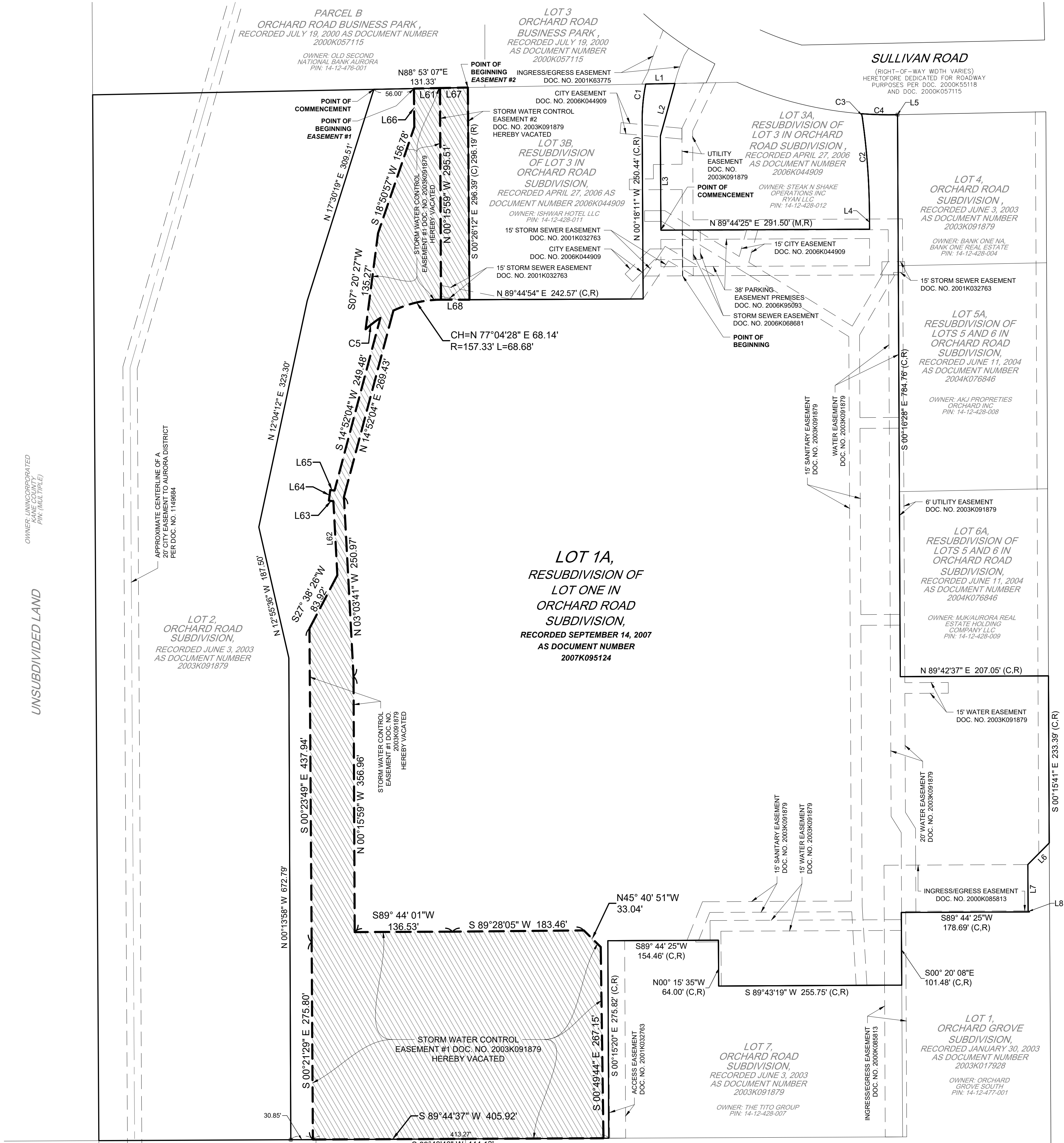
LOCATED IN THE SOUTHEAST QUARTER OF SECTION 12, TOWNSHIP 38 NORTH,
RANGE 7 EAST OF THE THIRD PRINCIPAL MERIDIAN,
CITY OF AURORA, COUNTY OF KANE, STATE OF ILLINOIS



0 80' 160'
1" = 80' (HORIZONTAL)

LEGEND

BOUNDARY LINE =	
R.O.W. LINE =	
LOT LINE =	
EX. EASEMENT LINE =	
EX. EASEMENT CENTER LINE =	
EASEMENT HEREBY VACATED =	



GENERAL NOTES

- DISTANCES ARE MARKED IN FEET AND DECIMAL PLACES THEREOF. MEASUREMENTS SHOWN IN PARENTHESIS (XXX) ARE RECORD VALUES.
- DIMENSIONS ALONG CURVED LINES ARE ARC LENGTHS (L), RADIUS (R) AND CHORD BEARING AND LENGTH (CH).
- NO MEASUREMENT SHALL BE ASSUMED BY SCALE MEASUREMENT

CURVE TABLE				
Curve #	RADIUS	LENGTH	CHORD BEARING	CHORD DIST
C1	250.00'	50.04'	N05°40'30"E	49.95'
C2	1000.00'	133.87'	S04°08'49"E	133.77'
C3	50.00'	7.49'	S12°13'35"E	7.48'
C4	525.00'	49.94'	N88°26'56"W	49.92'

Line Table		
Line #	Direction	Length
L1	S88° 53' 07"W	40.79'
L2	S15° 27' 40"W	76.07'
L3	S00° 18' 11"E	131.52'
L4	N00° 29' 08"W	20.54'
L5	N88° 49' 33"E	0.60'
L6	S44° 44' 19"W	42.43'
L7	S00° 19' 16"E	64.46'
L8	N43° 59' 14"W	2.26'

Line Table		
Line #	Direction	Length
L61	S88° 53' 07"W	36.39'
L62	S03° 03' 41"E	103.49'
L63	S82° 30' 19"E	6.37'
L64	S07° 29' 41"W	15.00'
L65	N82° 30' 19"W	6.01'
L66	S00° 31' 55"E	53.64'
L67	N88° 53' 07"E	38.95'
L68	N89° 50' 12"W	39.83'

CURVE TABLE				
Curve #	RADIUS	LENGTH	CHORD BEARING	CHORD DIST
C5	157.33'	26.02'	N52°12'58"E	25.99'

SPRINGS AT AURORA
AURORA, ILLINOIS
PLAT OF VACATION

OWNER/ CLIENT/
PETITIONER

CONTINENTAL 834 FUND LLC
W134 N8675 EXECUTIVE PKWY,
MENOMONEE FALLS, WI 53051



2200 CABOT DRIVE
SUITE 325
LISLE, IL 60532
P: 630.598.0007
WWW.CAGECIVIL.COM

PLAT OF VACATION

LOCATED IN THE SOUTHEAST QUARTER OF SECTION 12, TOWNSHIP 38 NORTH,
RANGE 7 EAST OF THE THIRD PRINCIPAL MERIDIAN,
CITY OF AURORA, COUNTY OF KANE, STATE OF ILLINOIS

WATER EASEMENT LEGAL DESCRIPTION (SHEET 1)

A PORTION OF A PARCEL OF LAND DESCRIBED AT DOCUMENT NUMBER 2003K091879, BEING 15.0 FEET IN WIDTH, IN LOT 1A OF A RESUBDIVISION OF LOT ONE IN ORCHARD ROAD SUBDIVISION RECORDED SEPTEMBER 14, 2007 AS DOCUMENT NUMBER 2007K095124 IN THE KANE COUNTY RECORDS, LOCATED IN THE SOUTHEAST QUARTER OF SECTION 12, TOWNSHIP 38 NORTH, RANGE 7 EAST OF THE THIRD PRINCIPAL MERIDIAN, COUNTY OF KANE, STATE OF ILLINOIS, BEING MORE PARTICULARLY DESCRIBED AS FOLLOWS:

COMMENCING AT THE SOUTHWEST CORNER OF LOT 3A IN THE RESUBDIVISION OF LOT 3 IN ORCHARD ROAD SUBDIVISION RECORDED APRIL 27, 2006 AS DOCUMENT NUMBER 2006K044909;

THENCE ALONG THE SOUTH LINE OF SAID LOT 3A, NORTH 89 DEGREES 44 MINUTES 25 SECONDS EAST, A DISTANCE OF 30.01 FEET;

THENCE DEPARTING SAID LINE, SOUTH 00 DEGREES 15 MINUTES 35 SECONDS EAST, A DISTANCE OF 63.95 FEET TO THE POINT OF BEGINNING;

THENCE NORTH 89 DEGREES 44 MINUTES 14 SECONDS EAST, A DISTANCE OF 15.00 FEET;

THENCE SOUTH 00 DEGREES 15 MINUTES 59 SECONDS EAST, A DISTANCE OF 79.58 FEET;

THENCE SOUTH 00 DEGREES 15 MINUTES 59 SECONDS EAST, A DISTANCE OF 157.44 FEET;

THENCE SOUTH 00 DEGREES 15 MINUTES 59 SECONDS EAST, A DISTANCE OF 195.32 FEET;

THENCE SOUTH 00 DEGREES 15 MINUTES 59 SECONDS EAST, A DISTANCE OF 124.68 FEET;

THENCE SOUTH 00 DEGREES 15 MINUTES 59 SECONDS EAST, A DISTANCE OF 71.77 FEET;

THENCE SOUTH 45 DEGREES 15 MINUTES 59 SECONDS EAST, A DISTANCE OF 47.16 FEET;

THENCE SOUTH 00 DEGREES 27 MINUTES 21 SECONDS EAST, A DISTANCE OF 238.37 FEET;

THENCE SOUTH 89 DEGREES 44 MINUTES 01 SECONDS WEST, A DISTANCE OF 15.00 FEET;

THENCE NORTH 00 DEGREES 27 MINUTES 01 SECONDS EAST, A DISTANCE OF 232.13 FEET;

THENCE NORTH 45 DEGREES 15 MINUTES 59 SECONDS WEST, A DISTANCE OF 47.18 FEET;

THENCE NORTH 00 DEGREES 15 MINUTES 59 SECONDS WEST, A DISTANCE OF 70.55 FEET;

THENCE NORTH 89 DEGREES 44 MINUTES 01 SECONDS WEST, A DISTANCE OF 30.82 FEET;

THENCE NORTH 00 DEGREES 14 MINUTES 01 SECONDS EAST, A DISTANCE OF 15.00 FEET;

THENCE SOUTH 89 DEGREES 45 MINUTES 59 SECONDS EAST, A DISTANCE OF 30.68 FEET;

THENCE NORTH 00 DEGREES 15 MINUTES 59 SECONDS WEST, A DISTANCE OF 109.61 FEET;

THENCE SOUTH 89 DEGREES 44 MINUTES 01 SECONDS WEST, A DISTANCE OF 76.00 FEET;

THENCE NORTH 00 DEGREES 15 MINUTES 59 SECONDS WEST, A DISTANCE OF 15.00 FEET;

THENCE NORTH 89 DEGREES 44 MINUTES 01 SECONDS EAST, A DISTANCE OF 76.00 FEET;

THENCE NORTH 00 DEGREES 15 MINUTES 59 SECONDS WEST, A DISTANCE OF 142.32 FEET;

THENCE SOUTH 89 DEGREES 44 MINUTES 01 SECONDS WEST, A DISTANCE OF 30.75 FEET;

THENCE NORTH 00 DEGREES 15 MINUTES 59 SECONDS WEST, A DISTANCE OF 15.00 FEET;

THENCE NORTH 89 DEGREES 44 MINUTES 01 SECONDS EAST, A DISTANCE OF 30.75 FEET;

THENCE SOUTH 00 DEGREES 15 MINUTES 59 SECONDS WEST, A DISTANCE OF 142.44 FEET;

THENCE SOUTH 89 DEGREES 44 MINUTES 01 SECONDS WEST, A DISTANCE OF 116.82 FEET;

THENCE SOUTH 00 DEGREES 15 MINUTES 59 SECONDS WEST, A DISTANCE OF 242.32 FEET;

THENCE SOUTH 44 DEGREES 59 MINUTES 56 SECONDS WEST, A DISTANCE OF 87.64 FEET;

THENCE SOUTH 45 DEGREES 00 MINUTES 04 SECONDS EAST, A DISTANCE OF 5.24 FEET;

THENCE SOUTH 44 DEGREES 59 MINUTES 56 SECONDS WEST, A DISTANCE OF 15.00 FEET;

THENCE SOUTH 45 DEGREES 00 MINUTES 04 SECONDS WEST, A DISTANCE OF 5.24 FEET;

THENCE SOUTH 44 DEGREES 59 MINUTES 56 SECONDS WEST, A DISTANCE OF 19.62 FEET;

THENCE SOUTH 00 DEGREES 15 MINUTES 59 SECONDS EAST, A DISTANCE OF 638.32 FEET;

THENCE SOUTH 00 DEGREES 15 MINUTES 46 SECONDS EAST, A DISTANCE OF 15.00 FEET;

THENCE SOUTH 45 DEGREES 00 MINUTES 04 SECONDS EAST, A DISTANCE OF 77.18 FEET;

THENCE NORTH 89 DEGREES 44 MINUTES 01 SECONDS EAST, A DISTANCE OF 160.39 FEET;

THENCE NORTH 00 DEGREES 15 MINUTES 59 SECONDS WEST, A DISTANCE OF 93.85 FEET;

THENCE NORTH 89 DEGREES 44 MINUTES 01 SECONDS EAST, A DISTANCE OF 15.00 FEET;

THENCE SOUTH 00 DEGREES 15 MINUTES 59 SECONDS EAST, A DISTANCE OF 15.00 FEET;

THENCE SOUTH 45 DEGREES 15 MINUTES 59 SECONDS EAST, A DISTANCE OF 93.85 FEET;

THENCE NORTH 89 DEGREES 44 MINUTES 01 SECONDS EAST, A DISTANCE OF 47.23 FEET;

THENCE NORTH 00 DEGREES 15 MINUTES 59 SECONDS WEST, A DISTANCE OF 80.07 FEET;

THENCE NORTH 89 DEGREES 44 MINUTES 01 SECONDS EAST, A DISTANCE OF 15.00 FEET;

THENCE SOUTH 00 DEGREES 15 MINUTES 59 SECONDS EAST, A DISTANCE OF 80.07 FEET;

THENCE SOUTH 45 DEGREES 15 MINUTES 59 SECONDS EAST, A DISTANCE OF 18.18 FEET;

THENCE NORTH 89 DEGREES 44 MINUTES 01 SECONDS EAST, A DISTANCE OF 68.24 FEET;

THENCE NORTH 00 DEGREES 15 MINUTES 59 SECONDS WEST, A DISTANCE OF 51.59 FEET;

THENCE NORTH 89 DEGREES 44 MINUTES 01 SECONDS WEST, A DISTANCE OF 15.00 FEET;

THENCE SOUTH 00 DEGREES 15 MINUTES 59 SECONDS EAST, A DISTANCE OF 51.59 FEET;

THENCE NORTH 89 DEGREES 44 MINUTES 01 SECONDS EAST, A DISTANCE OF 59.47 FEET;

THENCE SOUTH 00 DEGREES 27 MINUTES 21 SECONDS EAST, A DISTANCE OF 67.01 FEET;

THENCE SOUTH 89 DEGREES 44 MINUTES 01 SECONDS WEST, A DISTANCE OF 81.96 FEET;

THENCE NORTH 45 DEGREES 15 MINUTES 59 SECONDS WEST, A DISTANCE OF 18.18 FEET;

THENCE SOUTH 89 DEGREES 44 MINUTES 01 SECONDS WEST, A DISTANCE OF 33.81 FEET;

THENCE SOUTH 89 DEGREES 44 MINUTES 01 SECONDS EAST, A DISTANCE OF 62.23 FEET;

THENCE SOUTH 89 DEGREES 44 MINUTES 01 SECONDS WEST, A DISTANCE OF 174.15 FEET;

THENCE NORTH 45 DEGREES 15 MINUTES 59 SECONDS WEST, A DISTANCE OF 15.00 FEET;

THENCE NORTH 00 DEGREES 15 MINUTES 46 SECONDS WEST, A DISTANCE OF 20.04 FEET;

THENCE SOUTH 89 DEGREES 44 MINUTES 01 SECONDS WEST, A DISTANCE OF 7.00 FEET;

THENCE NORTH 00 DEGREES 15 MINUTES 59 SECONDS WEST, A DISTANCE OF 15.00 FEET;

THENCE NORTH 89 DEGREES 44 MINUTES 01 SECONDS EAST, A DISTANCE OF 7.00 FEET;

THENCE NORTH 00 DEGREES 15 MINUTES 59 SECONDS WEST, A DISTANCE OF 637.08 FEET;

THENCE NORTH 44 DEGREES 59 MINUTES 56 SECONDS EAST, A DISTANCE OF 33.81 FEET;

THENCE NORTH 44 DEGREES 59 MINUTES 56 SECONDS EAST, A DISTANCE OF 101.32 FEET;

THENCE NORTH 89 DEGREES 44 MINUTES 01 SECONDS EAST, A DISTANCE OF 241.00 FEET;

THENCE NORTH 00 DEGREES 15 MINUTES 59 SECONDS WEST, A DISTANCE OF 31.30 FEET;

THENCE NORTH 89 DEGREES 44 MINUTES 01 SECONDS EAST, A DISTANCE OF 15.00 FEET;

THENCE SOUTH 00 DEGREES 15 MINUTES 59 SECONDS EAST, A DISTANCE OF 31.30 FEET;

THENCE NORTH 89 DEGREES 44 MINUTES 01 SECONDS EAST, A DISTANCE OF 109.32 FEET;

THENCE NORTH 00 DEGREES 15 MINUTES 59 SECONDS WEST, A DISTANCE OF 72.08 FEET TO THE POINT OF BEGINNING.

LEGAL DESCRIPTION

LOT 1A IN THE FINAL PLAT OF RESUBDIVISION OF LOT 1 IN ORCHARD ROAD SUBDIVISION, BEING A CONSOLIDATION OF LOT 1 OF ORCHARD ROAD SUBDIVISION RECORDED AS DOCUMENT NUMBER 2003K091879 AND LOTS 3C AND 3D OF RESUBDIVISION OF LOT 3 IN ORCHARD ROAD RECORDED AS DOCUMENT NUMBER 2006K044909 PART OF SECTION 12, TOWNSHIP 38 NORTH, RANGE 7 EAST OF THE THIRD PRINCIPAL MERIDIAN, IN THE CITY OF AURORA, KANE COUNTY, ILLINOIS, ACCORDING TO THE PLAT THEREOF RECORDED SEPTEMBER 14, 2007 AS DOCUMENT NO. 2007K095124, IN THE KANE COUNTY RECORDER'S OFFICE.

OWNER'S CERTIFICATE

THIS IS TO CERTIFY THAT CONTINENTAL 834 FUND LLC, A DELAWARE LIMITED LIABILITY COMPANY, IS THE RECORD OWNER OF THE PROPERTY DESCRIBED HEREON, AND DOES HEREBY CONSENT TO THE VACATION OF EASEMENT(S) DEPICTED HEREON.

DATED THIS _____ DAY OF _____, A.D., 20____

DANIEL J. MINAHAN, PRESIDENT
CONTINENTAL 834 FUND LLC, A DELAWARE LIMITED LIABILITY COMPANY,
BY: CONTINENTAL PROPERTIES COMPANY, INC., A WISCONSIN CORPORATION, ITS MANAGER

BY: _____

DANIEL J. MINAHAN
ITS: PRESIDENT

ADDRESS: W134 N8675 EXECUTIVE PARKWAY
MENOMONEE FALLS, WI 53051

STATE OF WISCONSIN)
)SS
COUNTY OF WAUKESHA)

I, THE UNDERSIGNED, A NOTARY PUBLIC IN AND FOR THE AFORESAID COUNTY AND STATE, DO HEREBY CERTIFY THAT THE FOREGOING SIGNATOR OF THE OWNER'S CERTIFICATE IS PERSONALLY KNOWN TO ME TO BE THE SAME PERSON WHOSE NAME IS SUBSCRIBED TO THE FOREGOING INSTRUMENT, AND THAT SAID INDIVIDUAL APPEARED AND DELIVERED SAID INSTRUMENT AS A FREE AND VOLUNTARY ACT OF THE CORPORATION AND THAT SAID INDIVIDUAL DID ALSO THEN AND THERE ACKNOWLEDGE THAT HE OR SHE IS A CUSTODIAN OF THE CORPORATE SEAL OF SAID CORPORATION AND DID AFFIX SAID SEAL OF SAID CORPORATION TO SAID INSTRUMENT AS HIS OR HER OWN FREE AND VOLUNTARY ACT AND AS THE FREE AND VOLUNTARY ACT OF SAID CORPORATION, AS OWNER, FOR THE USES AND PURPOSES THEREIN SET FORTH IN THE AFORESAID INSTRUMENT.

GIVEN UNDER MY HAND AND NOTARIAL SEAL THIS _____ DAY OF _____, A.D., 2025.

NOTARY PUBLIC

PLEASE TYPE/PRINT NAME

CITY ENGINEER CERTIFICATE

STATE OF ILLINOIS)
)SS
COUNTY OF KANE)

I, THE UNDERSIGNED, AS CITY ENGINEER OF THE CITY OF AURORA, KANE, DUPAGE, KENDALL AND WILL COUNTIES, ILLINOIS, DO HEREBY CERTIFY THAT THIS DOCUMENT IS APPROVED UNDER MY OFFICES THIS

_____ DAY OF _____, A.D., 20____

CITY ENGINEER

PLEASE TYPE/PRINT NAME

CITY COUNCIL CERTIFICATE

STATE OF ILLINOIS)
)SS
COUNTY OF KANE)

APPROVED THIS _____ DAY OF _____, A.D., 20____ BY
THE CITY COUNCIL OF THE CITY OF AURORA, PURSUANT TO
ORDINANCE/RESOLUTION NUMBER _____

BY: _____

MAYOR

ATTEST: _____

CITY CLERK

CITY CLERK'S CERTIFICATE (VACATION)

STATE OF ILLINOIS)
)SS
COUNTY OF KANE)

THIS IS TO CERTIFY THAT THE ABOVE PLAT CORRECTLY REPRESENTS THE VACATION DEPICTED HEREON, AND HAS BEEN ACCEPTED BY ORDINANCE NUMBER _____, A PROPER ORDINANCE
ADOPTED BY THE AURORA CITY COUNCIL ON _____
20____

CITY CLERK

COUNTY CLERK'S CERTIFICATE

STATE OF ILLINOIS)
)SS
COUNTY OF _____)

I, THE UNDERSIGNED, AS COUNTY CLERK OF _____ COUNTY, ILLINOIS, DO HEREBY CERTIFY THAT THERE ARE NO DELINQUENT GENERAL TAXES, NO UNPAID OR FORFEITED TAXES, AND NO REDEEMABLE TAX SALES AGAINST ANY OF THE LAND DEPICTED HEREON. I FURTHER CERTIFY THAT I HAVE RECEIVED ALL STATUTORY FEES IN CONNECTION WITH THE PLAT DEPICTED HEREON.

GIVEN UNDER MY HAND AND SEAL OF THE COUNTY CLERK AT _____

ILLINOIS, THIS _____ DAY OF _____, A.D., 20____

COUNTY CLERK

PLEASE TYPE/PRINT NAME

COUNTY RECORDER'S CERTIFICATE

STATE OF ILLINOIS)
)SS
COUNTY OF _____)

I, THE UNDERSIGNED, AS THE RECORDER OF DEEDS FOR _____ COUNTY DO HEREBY CERTIFY THAT INSTRUMENT NUMBER _____ WAS FILED FOR RECORD IN THE RECORDER'S OFFICE OF _____ COUNTY, ILLINOIS, ON THE _____ DAY OF _____, A.D., 20____ AT _____ O'CLOCK ____M.

RECORDER OF DEEDS

PLEASE TYPE/PRINT NAME

STORM WATER CONTROL EASEMENT #1 LEGAL DESCRIPTION (SHEET 2)

A PARCEL OF LAND, ALSO KNOWN AS STORM WATER CONTROL EASEMENT #1, DESCRIBED AT DOCUMENT NUMBER 2003K091879 IN LOT 1A OF A RESUBDIVISION OF LOT ONE IN ORCHARD ROAD SUBDIVISION RECORDED SEPTEMBER 14, 2007 AS DOCUMENT NUMBER 2007K095124 IN THE KANE COUNTY RECORDS, LOCATED IN THE SOUTHEAST QUARTER OF SECTION 12, TOWNSHIP 38 NORTH, RANGE 7 EAST OF THE THIRD PRINCIPAL MERIDIAN, COUNTY OF KANE, STATE OF ILLINOIS, BEING MORE PARTICULARLY DESCRIBED AS FOLLOWS:

COMMENCING AT THE NORTHWESTERNMOST CORNER OF SAID LOT 1A,

THENCE ALONG THE NORTH LINE OF SAID LOT 1A, NORTH 88 DEGREES 53 MINUTES 07 SECONDS EAST, A DISTANCE OF 56.00 FEET TO THE POINT OF BEGINNING;

THENCE ALONG SAID NORTH LINE, NORTH 88 DEGREES 53 MINUTES 07 SECONDS EAST, A DISTANCE OF 36.39 FEET;

THENCE DEPARTING SAID NORTH LINE, SOUTH 00 DEGREES 15 MINUTES 59 SECONDS EAST, A DISTANCE OF 295.51 FEET TO A NON-TANGENT CURVE;

THENCE SOUTHWESTERLY ALONG SAID CURVE CONCAVE TO THE SOUTHEAST HAVING A RADIUS OF 157.33 FEET SUBTENDING A CHORD BEARING SOUTH 77 DEGREES 04 MINUTES 28 SECONDS WEST, HAVING AN ARC DISTANCE OF 68.68 FEET AND A CHORD DISTANCE OF 68.14 FEET;

THENCE SOUTH 14 DEGREES 52 MINUTES 04 SECONDS WEST, A DISTANCE OF 269.43 FEET;

THENCE SOUTH 03 DEGREES 03 MINUTES 41 SECONDS EAST, A DISTANCE OF 250.97 FEET;

THENCE SOUTH 00 DEGREES 15 MINUTES 59 SECONDS EAST, A DISTANCE OF 356.96 FEET;

THENCE NORTH 89 DEGREES 44 MINUTES 01 SECONDS EAST, A DISTANCE OF 136.53 FEET;

THENCE NORTH 89 DEGREES 28 MINUTES 05 SECONDS EAST, A DISTANCE OF 183.46 FEET;

THENCE SOUTH 45 DEGREES 40 MINUTES 51 SECONDS EAST, A DISTANCE OF 33.04 FEET;

THENCE SOUTH 00 DEGREES 15 MINUTES 59 SECONDS EAST, A DISTANCE OF 83.92 FEET;

THENCE SOUTH 89 DEGREES 44 MINUTES 37 SECONDS WEST, A DISTANCE OF 405.92 FEET;

THENCE NORTH 00 DEGREES 21 MINUTES 29 SECONDS WEST, A DISTANCE OF 275.80 FEET;

THENCE NORTH 00 DEGREES 23 MINUTES 49 SECONDS WEST, A DISTANCE OF 437.94 FEET;

THENCE NORTH 27 DEGREES 38 MINUTES 26 SECONDS EAST, A DISTANCE OF 83.92 FEET;

THENCE NORTH 03 DEGREES 03 MINUTES 41 SECONDS WEST, A DISTANCE OF 103.49 FEET;

THENCE NORTH 82 DEGREES 30 MINUTES 19 SECONDS WEST, A DISTANCE OF 6.37 FEET;

THENCE NORTH 07 DEGREES 29 MINUTES 41 SECONDS EAST, A DISTANCE OF 15.00 FEET;

THENCE SOUTH 82 DEGREES 30 MINUTES 19 SECONDS EAST, A DISTANCE OF 6.01 FEET;

THENCE NORTH 14 DEGREES 52 MINUTES 04 SECONDS EAST, A DISTANCE OF 249.48 FEET TO A NON-TANGENT CURVE;

THENCE SOUTHWESTERLY ALONG SAID CURVE CONCAVE TO THE SOUTHEAST HAVING A RADIUS OF 157.33 FEET SUBTENDING A CHORD BEARING SOUTH 52 DEGREES 12 MINUTES 56 SECONDS WEST, HAVING AN ARC DISTANCE OF 26.02 FEET AND A CHORD DISTANCE OF 25.99 FEET;

THENCE NORTH 07 DEGREES 20 MINUTES 27 SECONDS EAST, A DISTANCE OF 135.27 FEET;

THENCE NORTH 18 DEGREES 50 MINUTES 57 SECONDS EAST, A DISTANCE OF 156.78 FEET;

THENCE NORTH 00 DEGREES 31 MINUTES 55 SECONDS WEST, A DISTANCE OF 53.64 FEET TO THE POINT OF BEGINNING.

STORM WATER CONTROL EASEMENT #2 LEGAL DESCRIPTION (SHEET 2)

A PARCEL OF LAND, ALSO KNOWN AS STORM WATER CONTROL EASEMENT #2, DESCRIBED AT DOCUMENT NUMBER 2003K091879 IN LOT 1A OF A RESUBDIVISION OF LOT ONE IN ORCHARD ROAD SUBDIVISION RECORDED SEPTEMBER 14, 2007 AS DOCUMENT NUMBER 2007K095124 IN THE KANE COUNTY RECORDS, LOCATED IN THE SOUTHEAST QUARTER OF SECTION 12, TOWNSHIP 38 NORTH, RANGE 7 EAST OF THE THIRD PRINCIPAL MERIDIAN, COUNTY OF KANE, STATE OF ILLINOIS, BEING MORE PARTICULARLY DESCRIBED AS FOLLOWS:

COMMENCING AT THE NORTHWESTERNMOST CORNER OF SAID LOT 1A,

THENCE ALONG THE NORTH LINE OF SAID LOT 1A, NORTH 88 DEGREES 53 MINUTES 07 SECONDS EAST, A DISTANCE OF 131.33 FEET TO THE POINT OF BEGINNING;

THENCE ALONG THE EASTERLY LINE OF SAID LOT 1A, ALSO BEING THE WESTERLY LINE OF LOT 3B IN RESUBDIVISION OF LOT 3 IN ORCHARD ROAD SUBDIVISION RECORDED APRIL 27, 2006 AS DOCUMENT NUMBER 2006K044909 IN THE RECORDS OF KANE COUNTY, SOUTH 00 DEGREES 26 MINUTES 12 SECONDS EAST, A DISTANCE OF 296.39 FEET TO THE SOUTHWEST CORNER OF SAID LOT 3B;

THENCE NORTH 89 DEGREES 50 MINUTES 12 SECONDS WEST, A DISTANCE OF 39.83 FEET;

THENCE NORTH 00 DEGREES 15 MINUTES 59 SECONDS WEST, A DISTANCE OF 295.51 FEET TO SAID NORTH LINE OF LOT 1A;

THENCE ALONG SAID NORTH LINE, NORTH 88 DEGREES 53 MINUTES 07 SECONDS EAST, A DISTANCE OF 38.95 FEET TO THE POINT OF BEGINNING.

SURVEYOR'S CERTIFICATE

STATE OF ILLINOIS)
)SS
COUNTY OF DUPAGE)

THIS IS TO CERTIFY THAT I, THE UNDERSIGNED, AN ILLINOIS PROFESSIONAL LAND SURVEYOR, HAVE SURVEYED THE PROPERTY DESCRIBED HEREON, AND THAT THIS PLAT WAS PREPARED FOR THE PURPOSE OF VACATING EASEMENTS AS SHOWN, AND THAT THIS PLAT OF VACATION ACCURATELY DEPICTS SAID PROPERTY.

GIVEN UNDER MY HAND AND SEAL AT LISLE, ILLINOIS, THIS _____ DAY OF _____, A.D., 2025.

FOR REVIEW

BY: _____
GABRIELA PTASINSKA
GPTASINSKA@CAGECIVIL.COM
ILLINOIS PROFESSIONAL LAND SURVEYOR NO. 035-003893
LICENSE EXPIRES NOVEMBER 30, 2026

DESIGN FIRM PROFESSIONAL LICENSE NO. 184007577
LICENSE EXPIRES APRIL 30, 2027.



3 OF 3	SHEET NUMBER	SCALE: N/A	DATE: 06/29/2025	PM: GP/AR	PROJ. NO. 240187	SPRINGS AT AURORA		OWNER/CLIENT/ PETITIONER	CONTINENTAL 834 FUND LLC W134 N8675 EXECUTIVE PKWY, MENOMONEE FALLS, WI 53051	REVISIONS Δ 07/08/2025 GP Δ 08/27/2025 GP Δ 09/05/2025 GP	OWNER/CLIENT/ PETITIONER	CAGE CIVIL ENGINEERING	2200 CABOT DRIVE SUITE 325 LISLE, IL 60532 P: 630.598.0007 WWW.CAGECIVIL.COM
						AURORA, ILLINOIS							
PLAT OF VACATION													