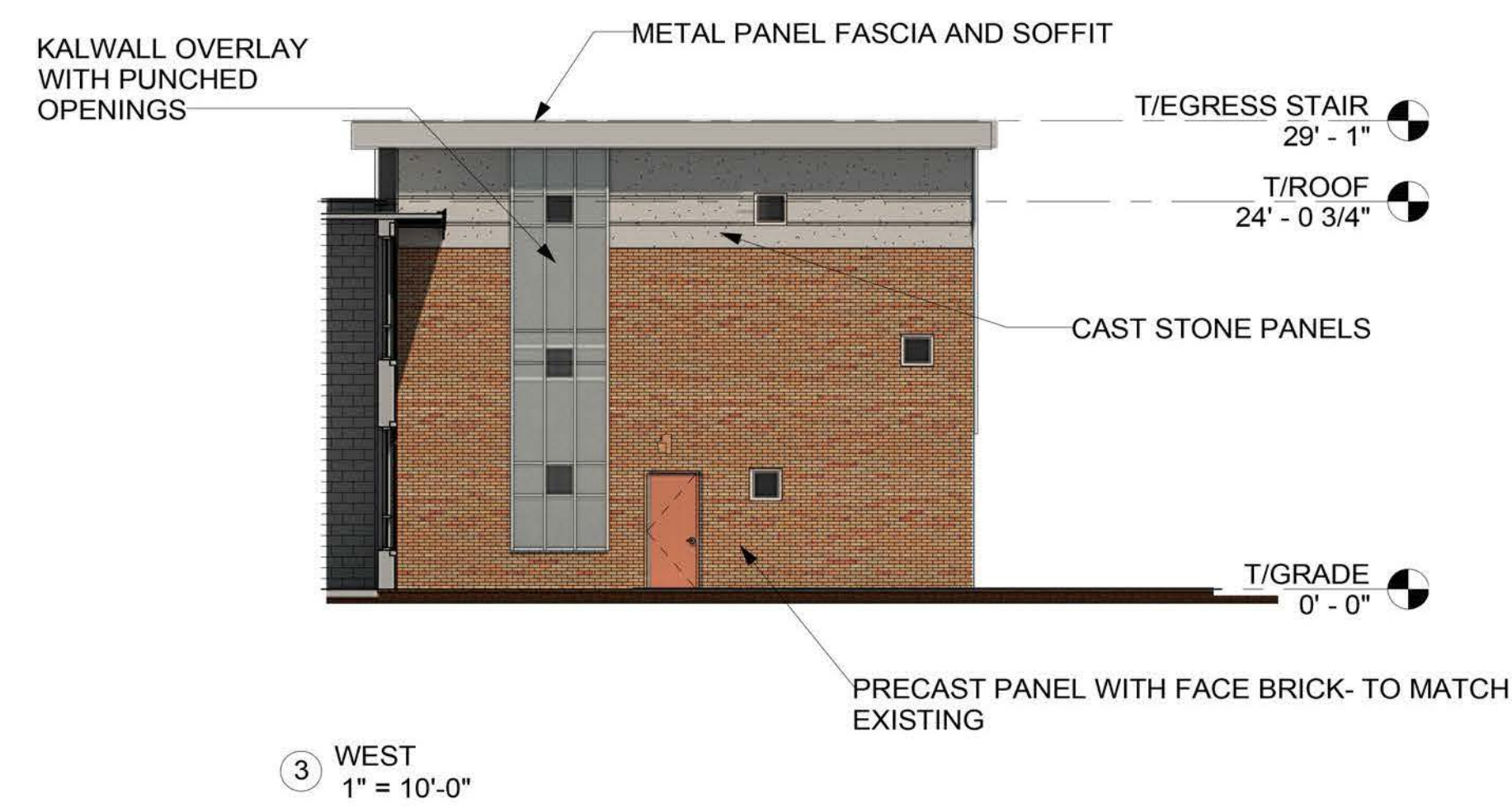
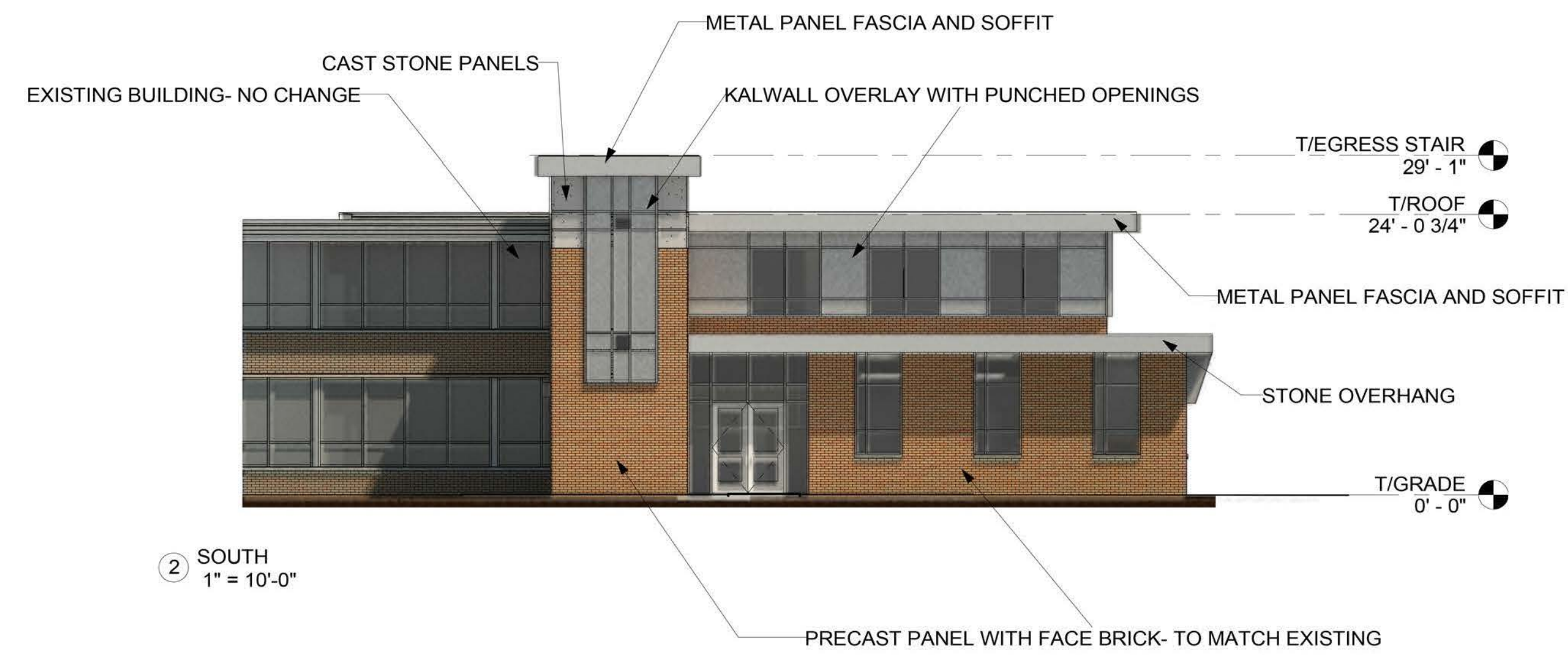
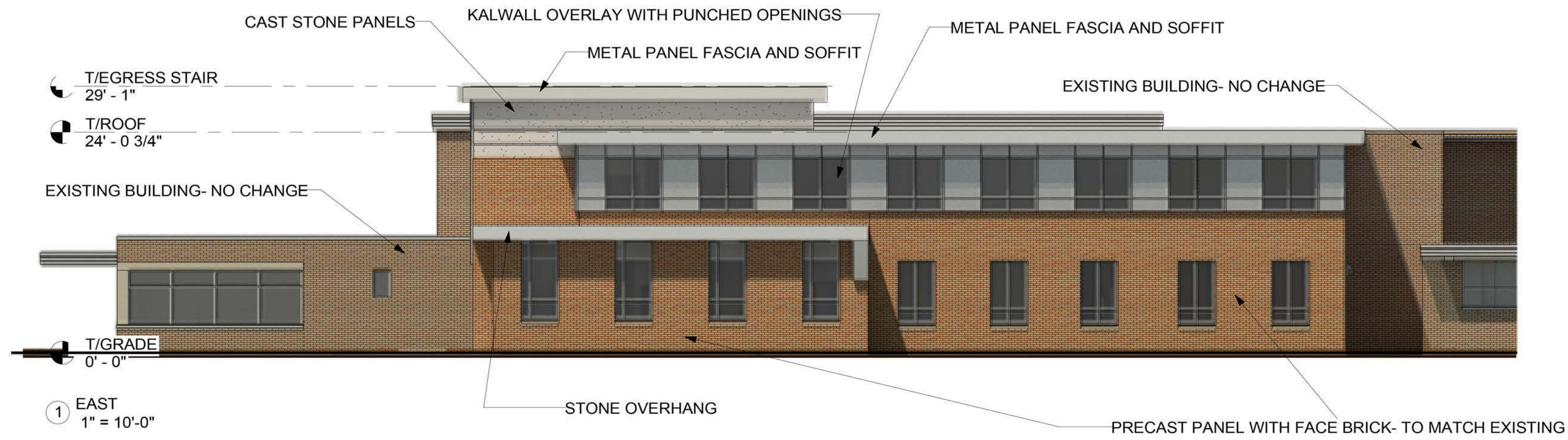


ELEVATIONS



PROPOSED ADDITION TO JEFFERSON MIDDLE SCHOOL

At:
Jefferson:
1151 Plum Street
Aurora, IL 60506

District Office:
80 S. River Street
Aurora, IL 60506

For WEST AURORA SCHOOL DISTRICT 129

ELEVATION DATA TABLE: ELEVATIONS			
Description	Value	Unit	
a) Building Height	29'- 1"	feet	
b) Grade Elevation	687	feet	
c) Building Square Footage by Floor	89,590 (EXISTING)	Square feet	
	7,703 (ADDITION)	Square feet	
d) Building Square Footage	96,663	Square feet	

SIGNAGE DATA TABLE: GROUND SIGNAGE			
Ground Sign #	Description	Value	Unit
i)	Length of street frontage- on which sign is located		feet
ii)	Width of Sign Face		feet
iii)	Height of Sign Face		feet
iv)	Square Footage of Sign Face		Square feet
v)	Height of Sign (over building)		feet
vi)	Type of Sign		
vii)	Type of Sign Base		
viii)	Is there a digital display		
If yes then:			
	Location of Digital Display on the sign		
	Height of digital Display		
	Width of Digital Display		
	Square footage of Digital Display		
	Percent of Digital Display Sign Coverage		

SIGNAGE DATA TABLE: WALL SIGNAGE			
Wall Sign #	Description	Value	Unit
i)	Width of Facade on which Sign is Located		feet
ii)	Height of Facade		feet
iii)	Square footage of Facade		Square feet
iv)	Width of Sign Face		feet
v)	Height of Sign Face		feet
vi)	Square Footage of Sign Face		Square feet
vii)	Percent of Sign Coverage- Facade on which Sign is Located		Percent

Copyright 2015 StudioGC, Inc.

NO. ISSUED FOR: DATE
SPECIAL USE SUBMITTAL 8/12/15

BUILDING AND SIGNAGE ELEVATION PLAN