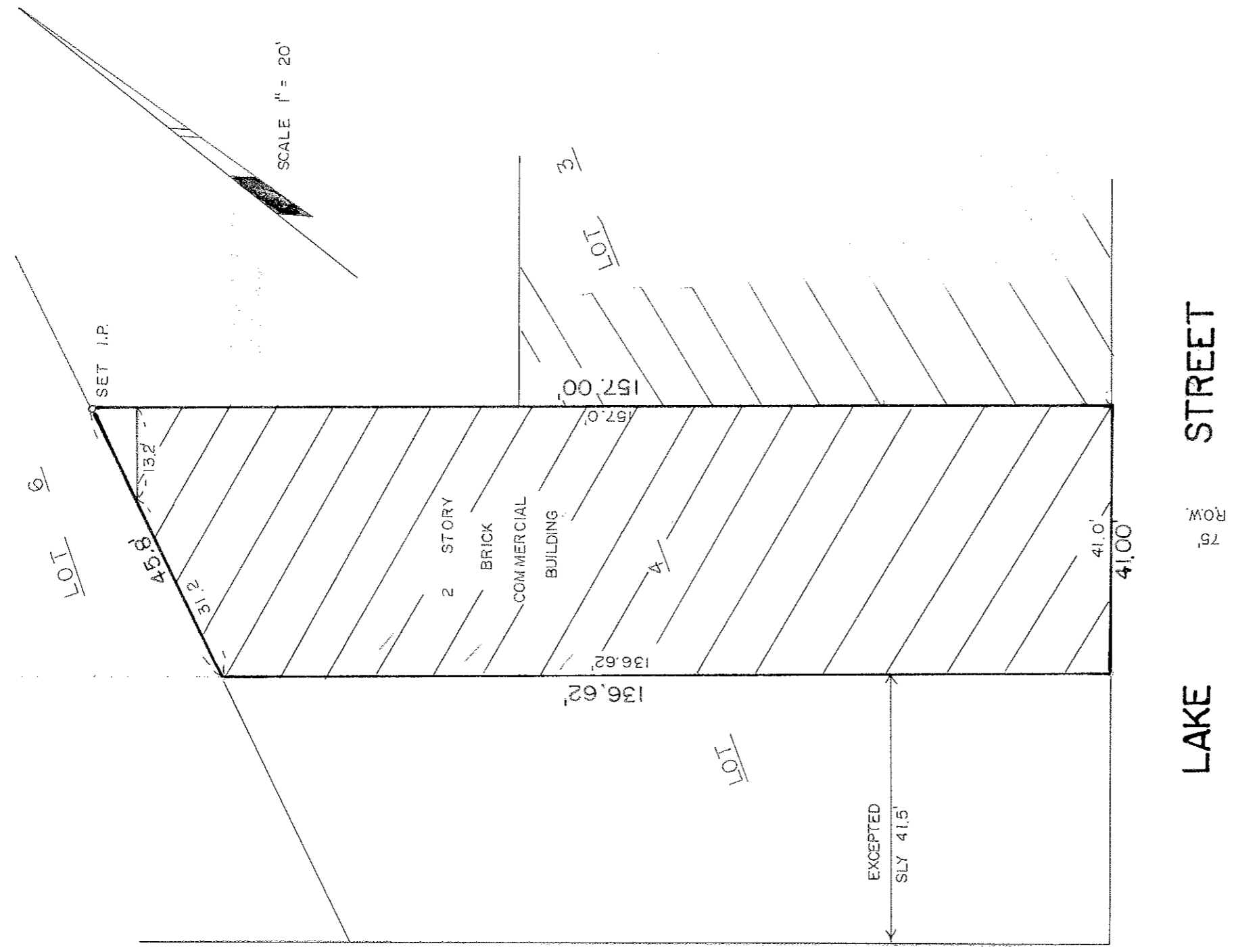


PLAT OF SURVEY



LAKE STREET

PLAT OF SURVEY OF LOT 4, EXCEPT THE SOUTHERLY 41 1/2 FEET MEASURED ALONG THE EASTERLY LINE IN BLOCK 9 OF THE ORIGINAL TOWN OF WEST AURORA, IN THE CITY OF AURORA, KANE COUNTY, ILLINOIS.

COMMONLY KNOWN AS 55 S. LAKE STREET.

STATE OF ILLINOIS) SS
COUNTY OF KANE)

I, MICHEL C. ENSALACO, ILLINOIS PROFESSIONAL LAND SURVEYOR NO. 2768, DO HEREBY CERTIFY THAT THE PLAT SHOWN HEREON IS A CORRECT REPRESENTATION OF A SURVEY PERFORMED AT AND UNDER MY DIRECTION.
DATED AT AURORA, ILLINOIS ON APRIL 5, 1996.

TODD SURVEYING
EDM & Associates, Inc.
Professional Land Surveyors
Aurora, IL (708) 892-1309

Michel C. Ensalaco

FILE: 960339-619-S
REV: _____