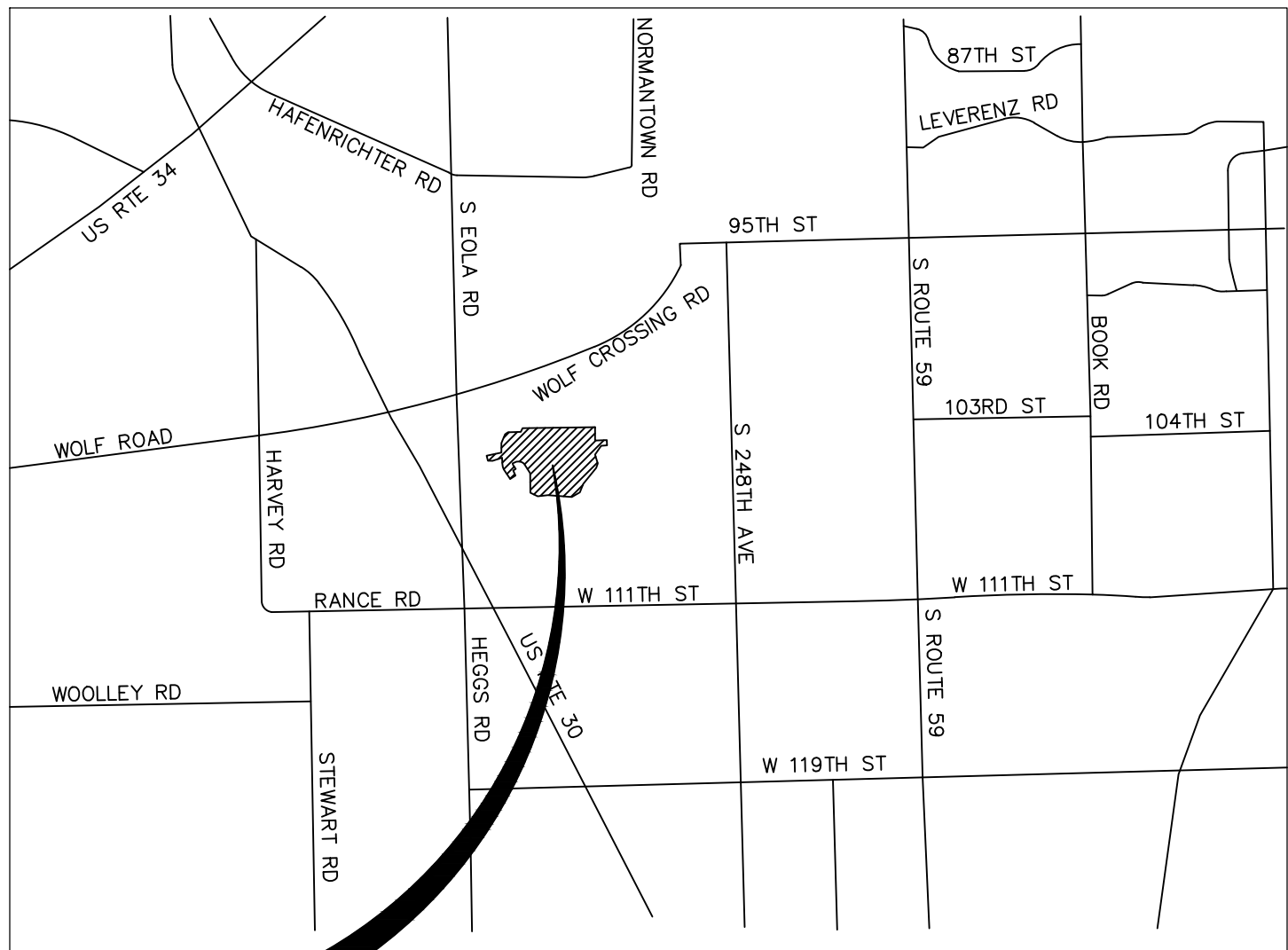


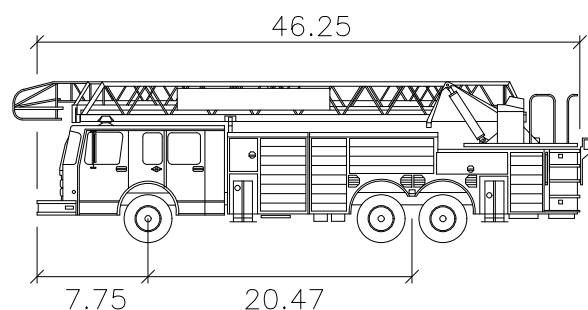
FIRE ACCESS PLAN DEL WEBB PHASE 1



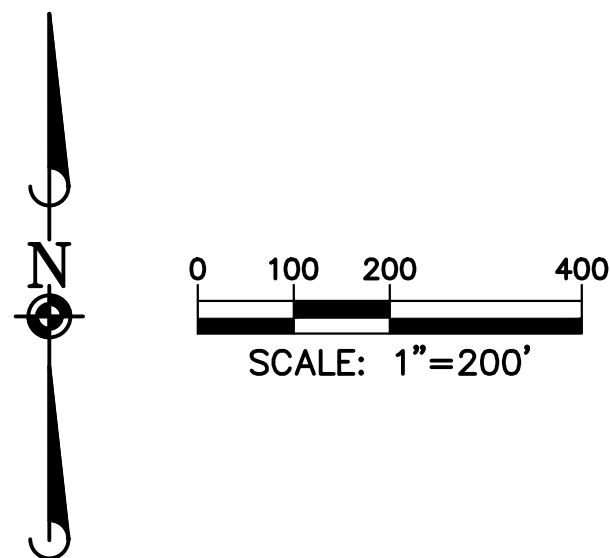
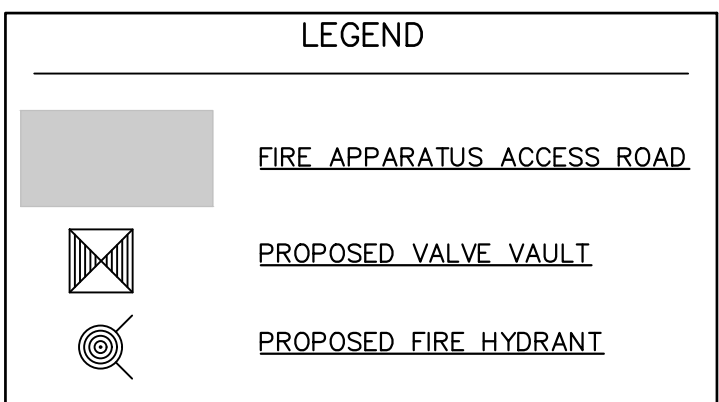
PROJECT
LOCATION

LOCATION MAP
1"=5000'

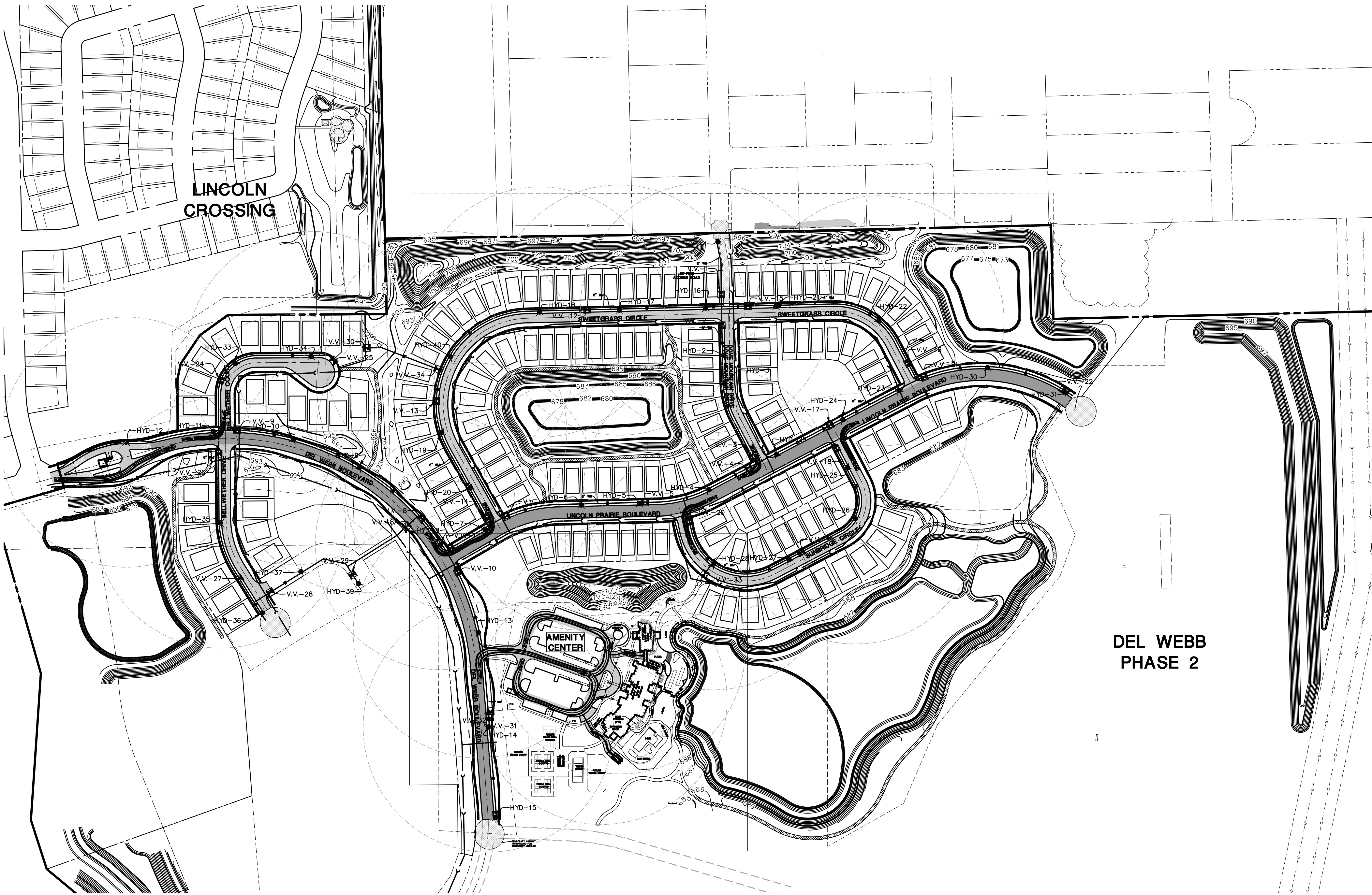
LOCAL ROAD — 66" ROW AND AMENITY CENTER FIRE LANE
(CITY OF AURORA SPECIFICATIONS)
1.5" HMA SURFACE COURSE, MIX "C", N50
2.5" HMA BINDER COURSE, N50
10" COMPACTED CA-6 (CRUSHED STONE)
COLLECTOR ROAD — 80" ROW
(CITY OF AURORA SPECIFICATIONS)
1.5" HMA SURFACE COURSE, MIX "C", N50
2.5" HMA BINDER COURSE, N50
4.5" HMA BINDER COURSE, N50
10" COMPACTED CA-6 (CRUSHED STONE)
FIRE ACCESS ROAD — BRICK PAVERS
75,000 LBS LOADING
FIRE ACCESS ROAD/TEMPORARY TURNAROUND — ASPHALT
1.5" HMA SURFACE COURSE, MIX "C", N50
2.5" HMA BINDER COURSE, N50
10" COMPACTED CA-6 (CRUSHED STONE)



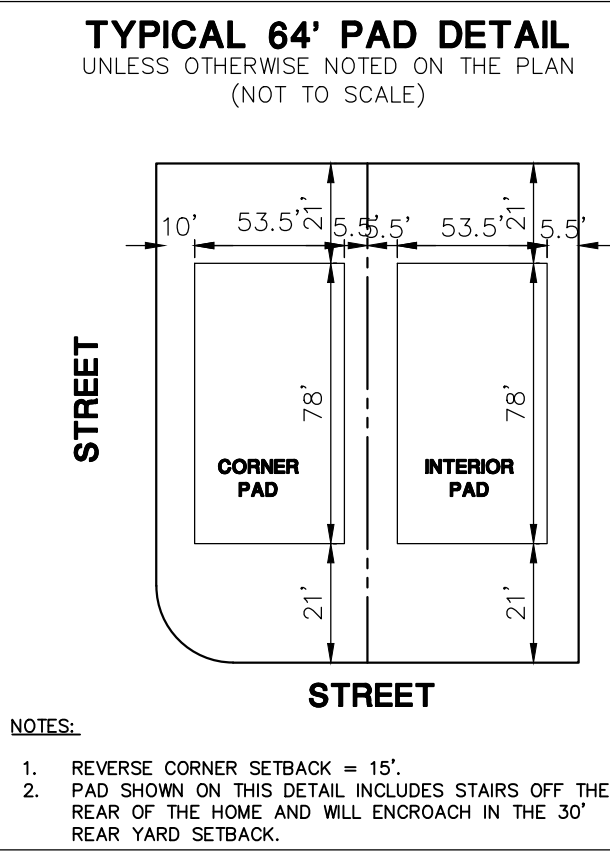
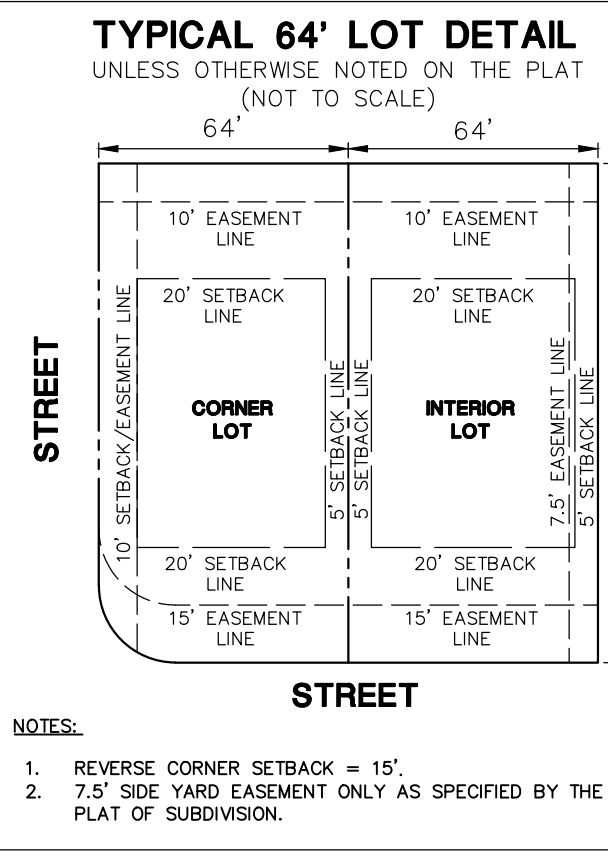
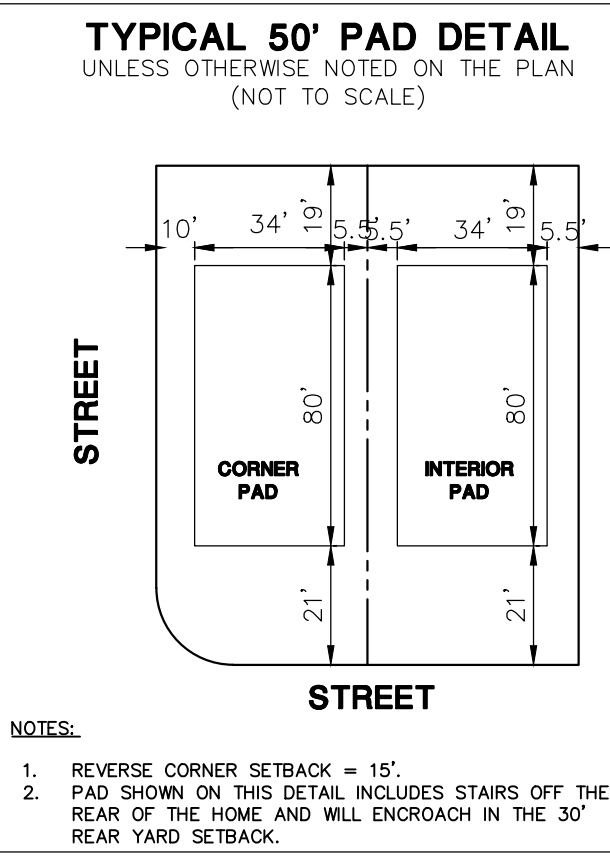
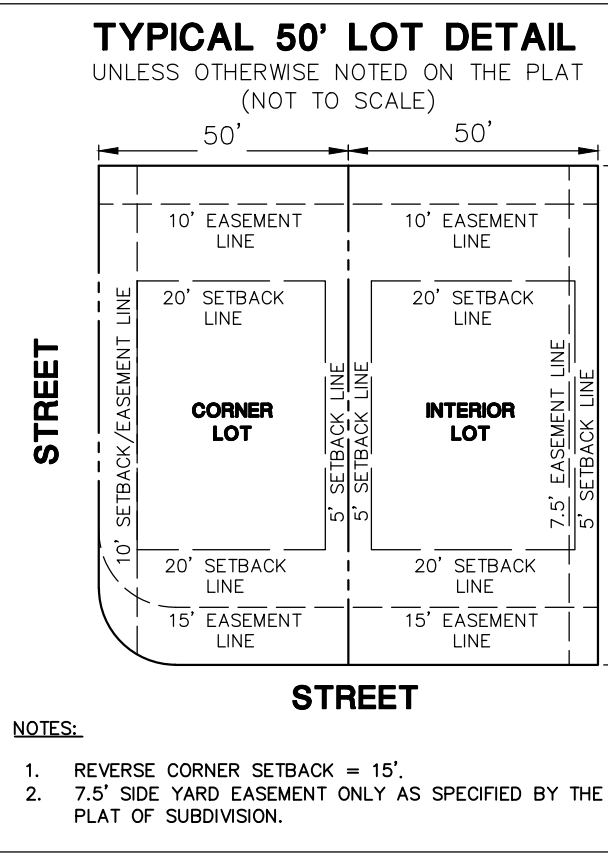
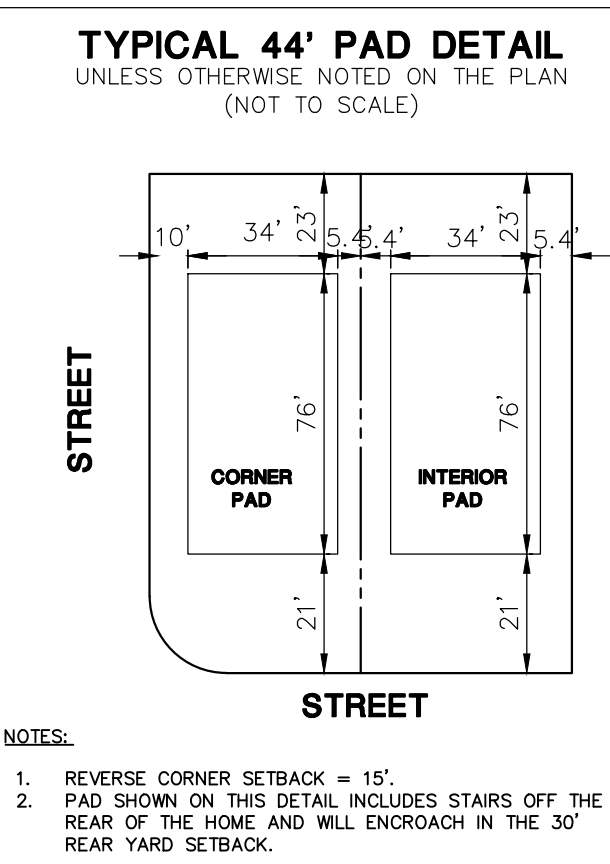
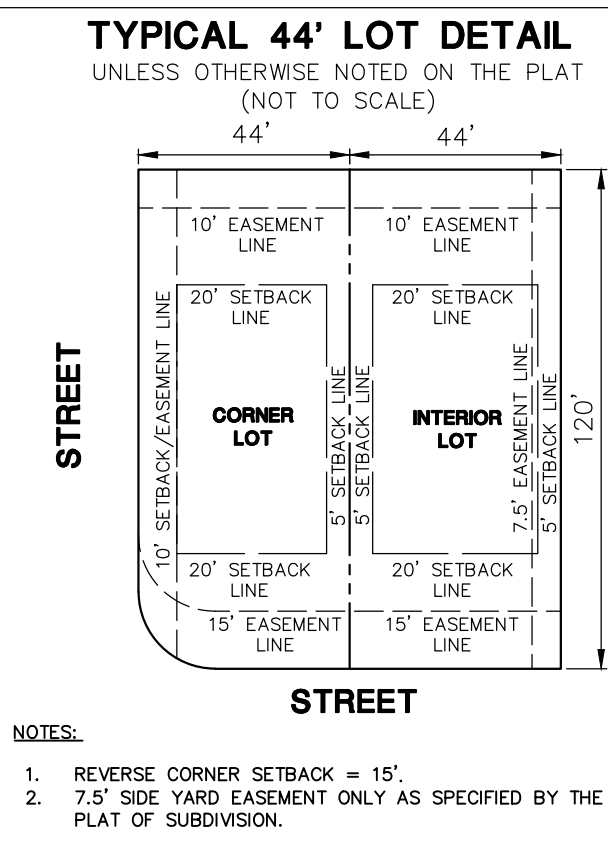
Aurora Fire Truck
feet
Width : 8.33
Track : 8.00
Lock to Lock Time : 6.0
Steering Angle : 40.7



Fire Access Plan Data Table (SF RESIDENTIAL)		
Description	Value	Unit
a) Building Height	35.00	feet
b) Building Square Footage (typical)	1,950	square feet
c) Building fire suppression information including any proposed use of sprinkler systems, fire alarm systems, whether fire extinguishers are needed:	SEE ARCHITECTURAL PLANS	
d) General description of business to be conducted within each building including: will there be rack storage in the building, will there be storage of combustible materials over twelve feet in height, clearance of sprinkler heads and stored materials (18 inch minimum):	NO HAZARDOUS MATERIALS TO BE STORED ON-SITE	



DEL WEBB
PHASE 2



MANHARD CONSULTING, LTD. ALL RIGHTS RESERVED.

PROJ. MGR.: JMI
PROJ. ASSOC.: MSP
DRAWN BY: MAB
DATE: 12/14/21
SCALE: 1"=200'

SHEET
1 OF 4
PUL.AU1.01

DEL WEBB PHASE 1
CITY OF AURORA, IL
FIRE ACCESS PLAN - OVERALL

MANHARD CONSULTING, LTD.
1900 E GOLF ROAD, SUITE 300
CHICAGO, IL 60646
CONTACT: MATT BROLEY, P.E.
630.772.7273

DATE: 12/14/2022
REVISED PER CITY COMMENTS
1/14/2022
REVISED PER CITY COMMENTS
JMI

Fire Access Plan Data Table		
Description	Value	Unit
a) Building Height	25.70	feet
b) Building Square Footage (typical)	18,225	square feet
c) Building fire suppression information including any proposed use of sprinkler systems, fire alarm systems, whether fire extinguishers are needed: SEE ARCHITECTURAL PLANS		
d) General description of business to be conducted within each building including: will there be rack storage in the building, will there be storage of combustible materials over twelve feet in height, clearance of sprinkler heads and stored materials (18 inch minimum): NO HAZARDOUS MATERIALS TO BE STORED ON-SITE		

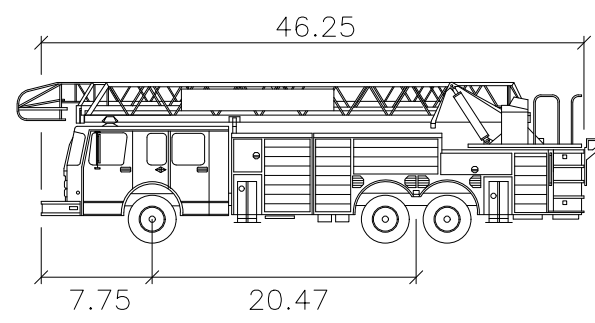
LOCAL ROAD - 66' ROW AND AMENITY CENTER FIRE LANE
(CITY OF AURORA SPECIFICATIONS)
1.5" HMA SURFACE COURSE, MIX "C", N50
2.5" HMA BINDER COURSE, N50
10" COMPACTED CA-6 (CRUSHED STONE)

COLLECTOR ROAD - 80' ROW
(CITY OF AURORA SPECIFICATIONS)
1.5" HMA SURFACE COURSE, MIX "C", N50
4.5" HMA BINDER COURSE, N50
10" COMPACTED CA-6 (CRUSHED STONE)

FIRE ACCESS ROAD - BRICK PAVERS
75,000 LBS LOADING

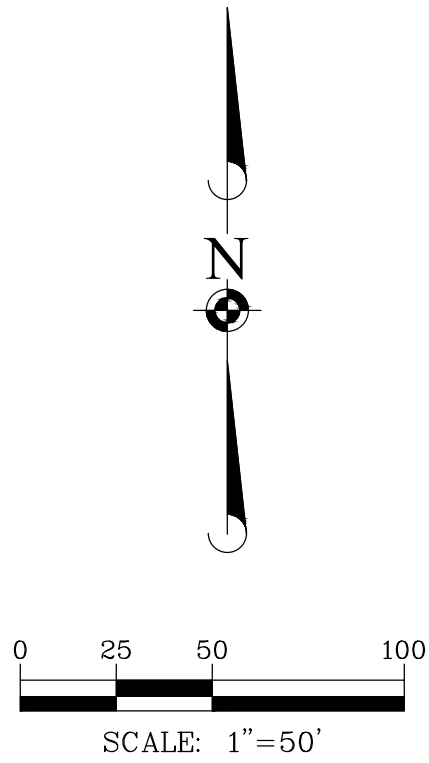
FIRE ACCESS ROAD/TEMPORARY TURNAROUND - ASPHALT
1.5" HMA SURFACE COURSE, MIX "C", N50
2.5" HMA BINDER COURSE, N50
10" COMPACTED CA-6 (CRUSHED STONE)

LEGEND	
	FIRE APPARATUS ACCESS ROAD
	PROPOSED VALVE VAULT
	PROPOSED FIRE HYDRANT



Aurora Fire Truck

Width	: 8.33
Track	: 8.00
Lock to Lock Time	: 6.0
Steering Angle	: 40.7



Manhard CONSULTING, INC.

200 West 1st Avenue, Suite 200
Aurora, Illinois 60001
Tel: 630.772.7273
Fax: 630.772.7274
www.manhardconsulting.com

PROPOSED DEVELOPMENT FOR:
OWNER: MANHARD CONSULTING, INC.
PETITIONER: PALTE HOME COMPANY
1900 E GOLF ROAD, SUITE 300
AURORA, ILLINOIS 60001
CONTACT: MATT BROLEY, P.E.
630.772.7273

DEL WEBB PHASE 1

CITY OF AURORA, IL

FIRE ACCESS PLAN - AMENITY CENTER

PROJ. MGR.: JMI
PROJ. ASSOC.: MSP
DRAWN BY: JTN
DATE: 12/14/21
SCALE: 1" = 50'

SHEET

4 OF 4

PUL.AUIL.01