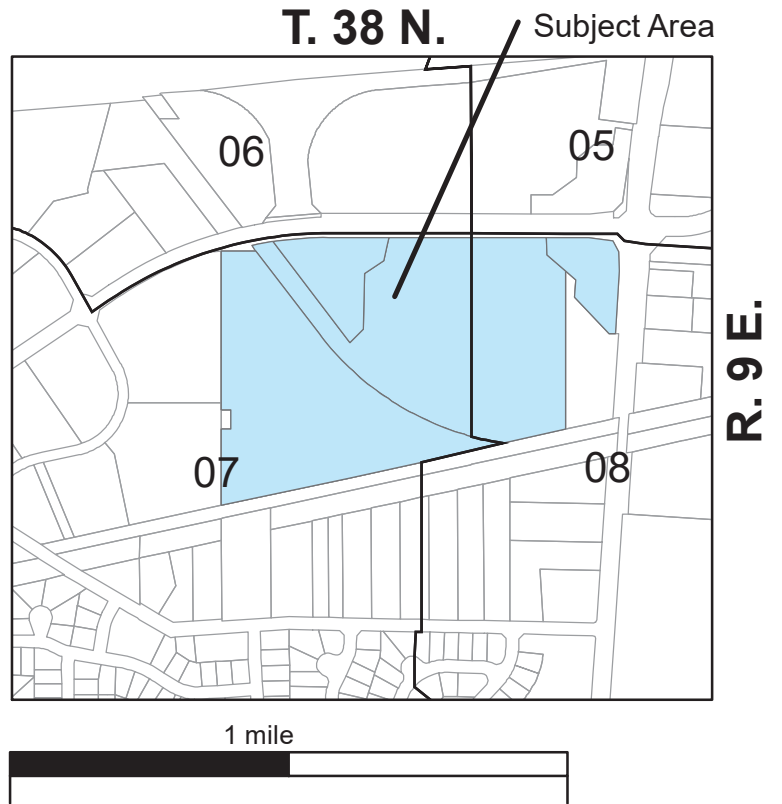


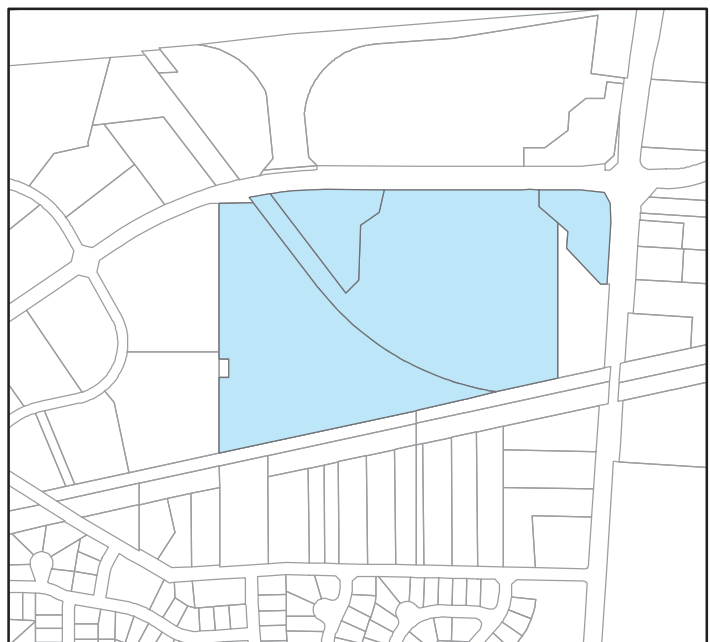
Legal Description

SEE ATTACHED

Locator Map



Actual Area



PIN(s)

07-07-200-009
07-07-200-016
07-08-100-009
07-08-100-010

Common Address

CYRUSONE SUBDIVISION



LEGAL DESCRIPTION CYRUSONE SUBDIVISION - LOT 1, NEW LOT2 (NORTHWEST POND, OLD LOT 3 (CENTER POND), OLD LOT 2 (NORTHEAST POND):

THAT PART OF THE SOUTHWEST 1/4 OF SECTION 5, THE SOUTHEAST 1/4 OF SECTION 6, THE NORTHEAST 1/4 OF SECTION 7 AND THE NORTHWEST 1/4 OF SECTION 8, TOWNSHIP 38 NORTH, RANGE 9, EAST OF THE THIRD PRINCIPAL MERIDIAN, DESCRIBED AS FOLLOWS:

BEGINNING AT THE NORTHEAST CORNER OF LOT 1 IN CYRUSONE SUBDIVISION, ACCORDING TO THE PLAT THEREOF RECORDED NOVEMBER 09, 2022, AS DOCUMENT NUMBER R2022-100126; AND JANUARY 27, 2017, AS DOCUMENT NUMBER R2017-009824.

THENCE SOUTH 88 DEGREES 22 MINUTES 41 SECONDS EAST, A DISTANCE OF 212.93 FEET;
THENCE SOUTH 81 DEGREES 32 MINUTES 07 SECONDS EAST, A DISTANCE OF 125.90 FEET;
THENCE SOUTH 28 DEGREES 30 MINUTES 26 SECONDS EAST, A DISTANCE OF 65.79 FEET;
THENCE SOUTH 00 DEGREES 26 MINUTES 32 SECONDS EAST, A DISTANCE OF 100.50 FEET;
THENCE SOUTH 05 DEGREES 19 MINUTES 18 SECONDS WEST, A DISTANCE OF 328.33 FEET;
THENCE NORTH 88 DEGREES 22 MINUTES 23 SECONDS WEST, A DISTANCE OF 33.84 FEET;
THENCE NORTH 41 DEGREES 35 MINUTES 46 SECONDS WEST, A DISTANCE OF 260.72 FEET;
THENCE NORTH 05 DEGREES 11 MINUTES 10 SECONDS EAST, A DISTANCE OF 90.17 FEET;
THENCE NORTH 47 DEGREES 52 MINUTES 43 SECONDS WEST, A DISTANCE OF 71.47 FEET;
THENCE SOUTH 01 DEGREE 20 MINUTES 51 SECONDS WEST, A DISTANCE OF 825.07 FEET;
THENCE SOUTH 78 DEGREES 55 MINUTES 55 SECONDS WEST, A DISTANCE OF 1837.44 FEET;
THENCE NORTH 01 DEGREE 20 MINUTES 01 SECONDS EAST, A DISTANCE OF 1325.17 FEET;
THENCE SOUTH 89 DEGREES 25 MINUTES 20 SECONDS EAST, A DISTANCE OF 181.62 FEET;
THENCE NORTH 35 DEGREES 52 MINUTES 37 SECONDS WEST, A DISTANCE OF 34.77 FEET;
THENCE A DISTANCE OF 112.36 FEET ALONG THE ARC OF A CIRCLE, CONVEX TO THE NORTHEAST HAVING A RADIUS OF 1937.00 FEET, WHOSE CHORD OF 112.34 FEET BEARS NORTH 81 DEGREES 14 MINUTES 07 SECONDS EAST;
THENCE A DISTANCE OF 294.96 FEET ALONG THE ARC OF A CIRCLE, CONVEX TO THE NORTHEAST HAVING A RADIUS OF 1937.00 FEET, WHOSE CHORD OF 294.68 FEET BEARS NORTH 87 DEGREES 15 MINUTES 34 SECONDS EAST;
THENCE SOUTH 88 DEGREES 22 MINUTES 41 SECONDS EAST, A DISTANCE OF 260.57 FEET;
THENCE SOUTH 88 DEGREES 22 MINUTES 41 SECONDS EAST, A DISTANCE OF 454.57 FEET;
THENCE SOUTH 88 DEGREES 50 MINUTES 49 SECONDS EAST, A DISTANCE OF 366.50 FEET;
THENCE SOUTH 88 DEGREES 22 MINUTES 41 SECONDS EAST, A DISTANCE OF 57.07 FEET;

TO THE POINT OF BEGINNING, IN DUPAGE COUNTY, ILLINOIS, CONTAINING 1,804,173 SQUARE FEET OR 41.418 ACRES, MORE OR LESS FOR LOT 1; CONTAINING 182,685 SQUARE FEET OR 4.194 ACRES, MORE OR LESS FOR NEW LOT 2 (NORTHWEST POND); CONTAINING 132,953 SQUARE FEET OR 3.052 ACRES, MORE OR LESS FOR OLD LOT 3 (CENTER POND); AND CONTAINING 115,385 SQUARE FEET OR 2.648 ACRES, MORE OR LESS FOR OLD LOT 2 (NORTHEAST POND); ALTOGETHER FOR 2,235,196 SQUARE FEET OR 51.31304 ACRES, MORE OR LESS.