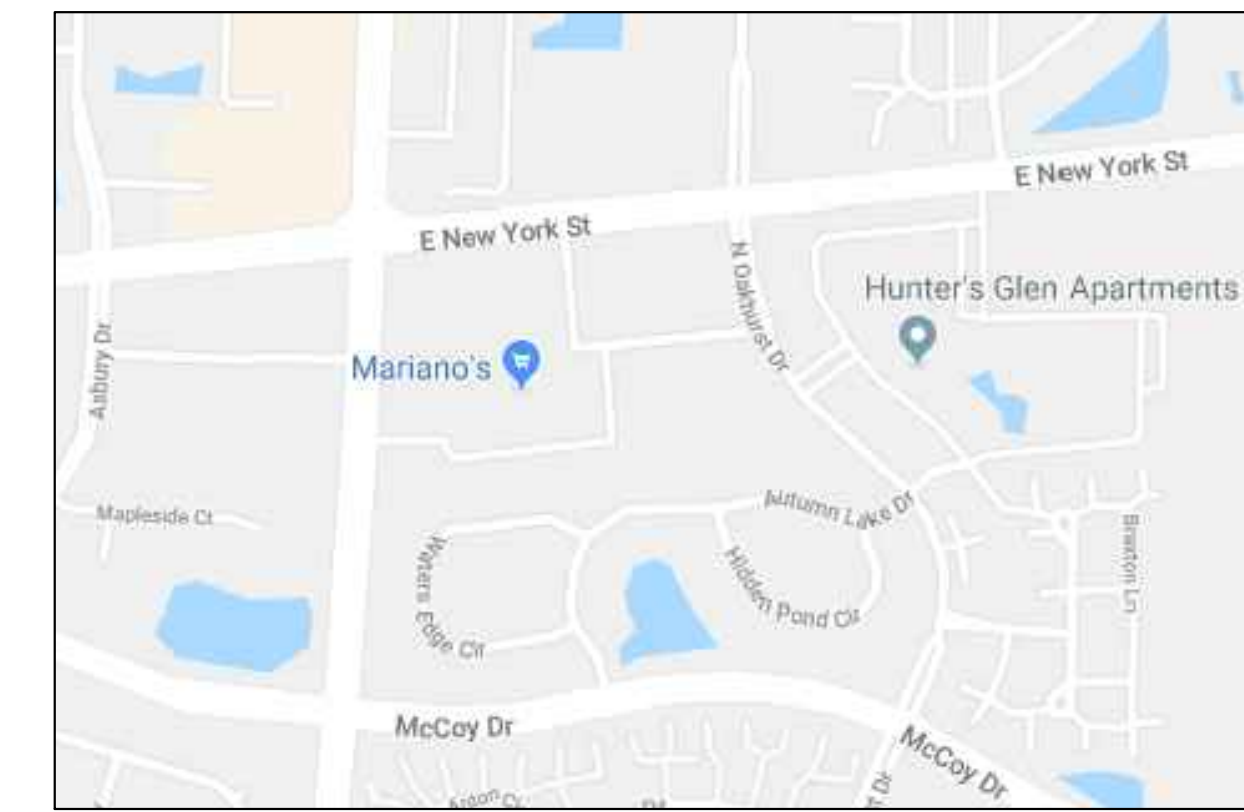


Landscape Plan for Lot 1 in PDA Resubdivision

LOCATION MAP

Not to Scale



charles vincent george
ARCHITECTS

1245 E. Diehl Rd. Suite
Naperville, Illinois 60563
630.357.2023 F | 630.357.2662
cvgarchitects.com

STAMP:

PRELIMINARY NOT FOR CONSTRUCTION

EXPIRES 11/30/2018
IL ARCHITECTURAL DESIGN FIRM NO.: 184-00544
DATE:

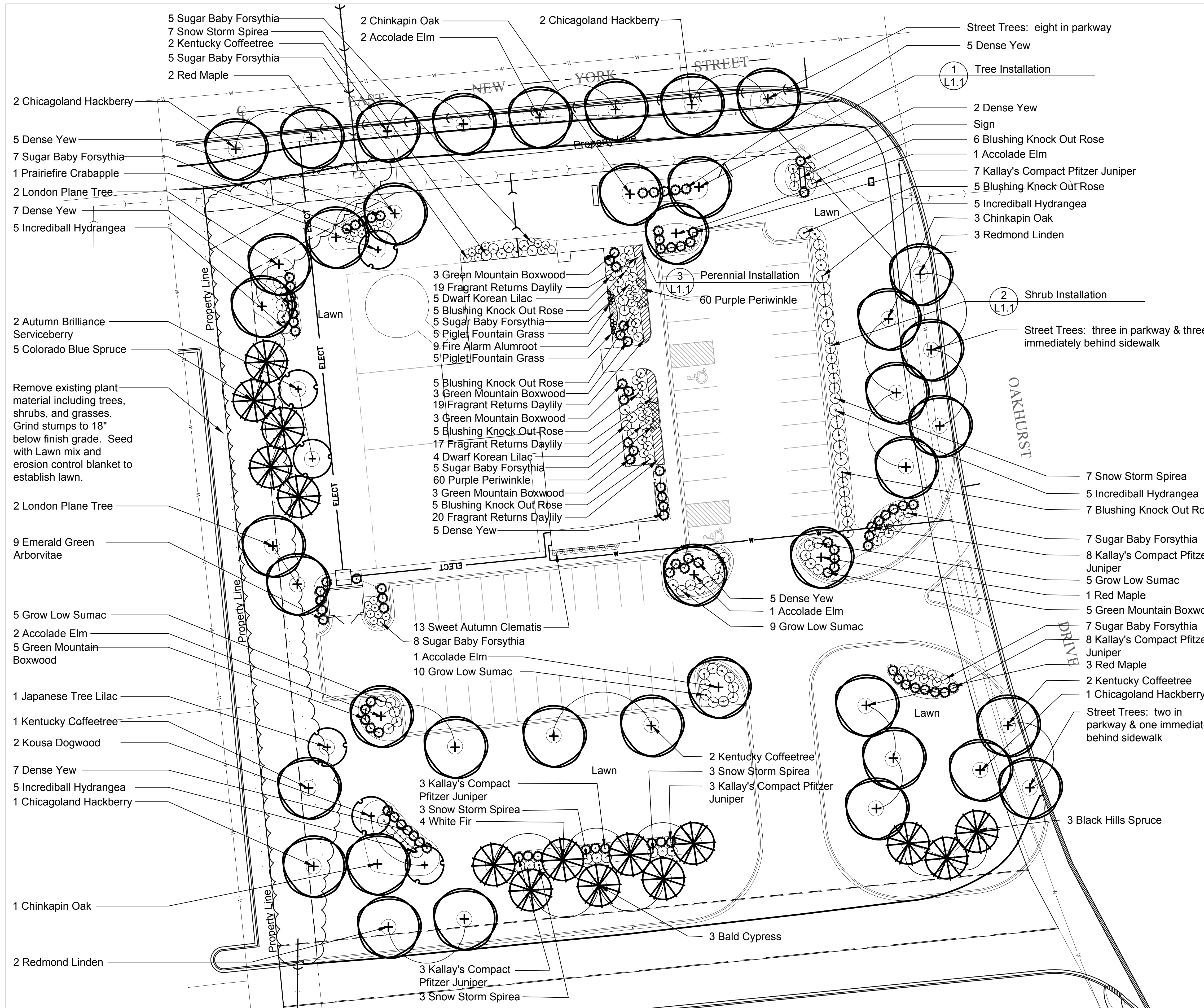
COPYRIGHT:
THE ATTACHED DRAWINGS ARE COPYRIGHTED AND ARE FOR INFORMATIONAL PURPOSES ONLY. CHARLES VINCENT GEORGE ARCHITECTS, INC. HAS NO MEANS OF ENSURING THAT THE DRAWINGS WILL NOT, OR HAVE NOT BEEN AFFECTED BY ANY FILE CONVERSION OR PRINTING PROCESS AND CANNOT THEREFORE BE RESPONSIBLE FOR THEIR CONTENTS. IF THE DRAWINGS ARE TO BE USED BY A THIRD PARTY FOR ANY PURPOSE, THE THIRD PARTY SHALL BE WHOLLY RESPONSIBLE FOR ENSURING THE ACCURACY OF THE INFORMATION CONTAINED THEREIN. ALL UNAUTHORIZED PRINTING AND/OR DISTRIBUTION IS STRICTLY PROHIBITED WITHOUT PRIOR WRITTEN CONSENT FROM CHARLES VINCENT GEORGE ARCHITECTS, INC.

ISSUE AND/OR REVISIONS:

NO.	DATE	DESCRIPTION
01	09/07/2018	Issue for Permit
02	10/04/2018	Revision
03	10/10/2018	Revision

PROJECT:

NEW GROUND-UP
WATERLEAF
3055 E NEW YORK ST
AURORA, IL



- Street Trees: eight in parkway
- 5 Dense Yew
- 1 Tree Installation (L1.1)
- 2 Dense Yew
- Sign
- 6 Blushing Knock Out Rose
- 1 Accolade Elm
- 7 Kallay's Compact Pfitzer Juniper
- 5 Blushing Knock Out Rose
- 5 Incrediball Hydrangea
- 3 Chinkapin Oak
- 3 Redmond Linden

- 2 Shrub Installation (L1.1)
- Street Trees: three in parkway & three immediately behind sidewalk

- 7 Snow Storm Spirea
- 5 Incrediball Hydrangea
- 7 Blushing Knock Out Rose
- 7 Sugar Baby Forsythia
- 8 Kallay's Compact Pfitzer Juniper
- 5 Grow Low Sumac
- 1 Red Maple
- 5 Green Mountain Boxwood
- 7 Sugar Baby Forsythia
- 8 Kallay's Compact Pfitzer Juniper
- 3 Red Maple
- 2 Kentucky Coffeetree
- 1 Chicagoland Hackberry
- Street Trees: two in parkway & one immediately behind sidewalk
- 3 Black Hills Spruce

- 5 Dense Yew
- 1 Accolade Elm
- 9 Grow Low Sumac
- 2 Kentucky Coffeetree
- 3 Snow Storm Spirea
- 3 Kallay's Compact Pfitzer Juniper
- 3 Kallay's Compact Pfitzer Juniper
- 3 Snow Storm Spirea
- 4 White Fir
- 3 Bald Cypress

- 3 Kallay's Compact Pfitzer Juniper
- 3 Snow Storm Spirea

- 5 Sugar Baby Forsythia
- 7 Snow Storm Spirea
- 2 Kentucky Coffeetree
- 5 Sugar Baby Forsythia
- 2 Red Maple
- 2 Chicagoland Hackberry
- 5 Dense Yew
- 7 Sugar Baby Forsythia
- 1 Prairiefire Crabapple
- 2 London Plane Tree
- 7 Dense Yew
- 5 Incrediball Hydrangea

- 2 Autumn Brilliance Serviceberry
- 5 Colorado Blue Spruce
- Remove existing plant material including trees, shrubs, and grasses. Grind stumps to 18" below finish grade. Seed with Lawn mix and erosion control blanket to establish lawn.
- 2 London Plane Tree
- 9 Emerald Green Arborvitae

- 5 Grow Low Sumac
- 2 Accolade Elm
- 5 Green Mountain Boxwood

- 1 Japanese Tree Lilac
- 1 Kentucky Coffeetree
- 2 Kousa Dogwood
- 7 Dense Yew
- 5 Incrediball Hydrangea
- 1 Chicagoland Hackberry

- 1 Chinkapin Oak
- 2 Redmond Linden
- 3 Kallay's Compact Pfitzer Juniper
- 3 Snow Storm Spirea

- 3 Green Mountain Boxwood
- 19 Fragrant Returns Daylily
- 5 Dwarf Korean Lilac
- 5 Blushing Knock Out Rose
- 5 Sugar Baby Forsythia
- 5 Piglet Fountain Grass
- 9 Fire Alarm Alumroot
- 5 Piglet Fountain Grass
- 5 Blushing Knock Out Rose
- 3 Green Mountain Boxwood
- 19 Fragrant Returns Daylily
- 3 Green Mountain Boxwood
- 5 Blushing Knock Out Rose
- 17 Fragrant Returns Daylily
- 4 Dwarf Korean Lilac
- 5 Sugar Baby Forsythia
- 60 Purple Periwinkle
- 3 Green Mountain Boxwood
- 3 Blushing Knock Out Rose
- 20 Fragrant Returns Daylily
- 5 Dense Yew

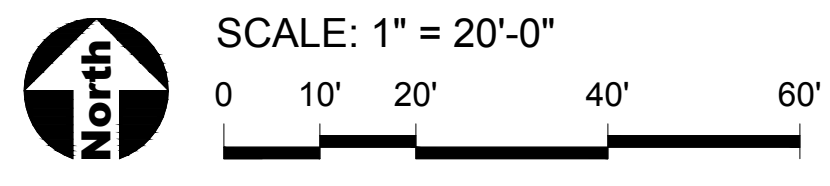
- 13 Sweet Autumn Clematis
- 8 Sugar Baby Forsythia
- 1 Accolade Elm
- 10 Grow Low Sumac

Landscape Data Table: Planting Material Key
Note: Symbols are blackline for proposed, gray-scale for existing

Canopy Trees (minimum size 2.5 caliper) Count:	41
Evergreen Trees (minimum size 6 feet) Count:	15
Understory Trees (minimum size 2.5 caliper or 8 feet if multi-stemmed) Count:	6
Evergreen Shrubs (minimum of 18 inches) Count:	99
Deciduous Shrubs (minimum of 18 inches) Count:	168
Ornamental Grasses Count:	10
Perennials Count:	97
Annuals Count:	0
Groundcover Square Footage:	60 Square Feet 120 Count
Turf (Seeded) Square Footage:	53,480 Square Feet
Turf (Sod) Square Footage:	0
Native Prairie Planting Square Footage:	0
Native Wetland Planting Square Footage:	0

Landscape Data Table: CTEs Provided

	CTE Value	Count Provided	Total CTEs Provided
Canopy Trees	1	41	41
Evergreen Trees	3	15	5
Understory Trees	3	6	2
Deciduous Shrubs	20	168	8
Evergreen Shrubs	20	99	5
Oversizing Credit			0
Total:		329	61



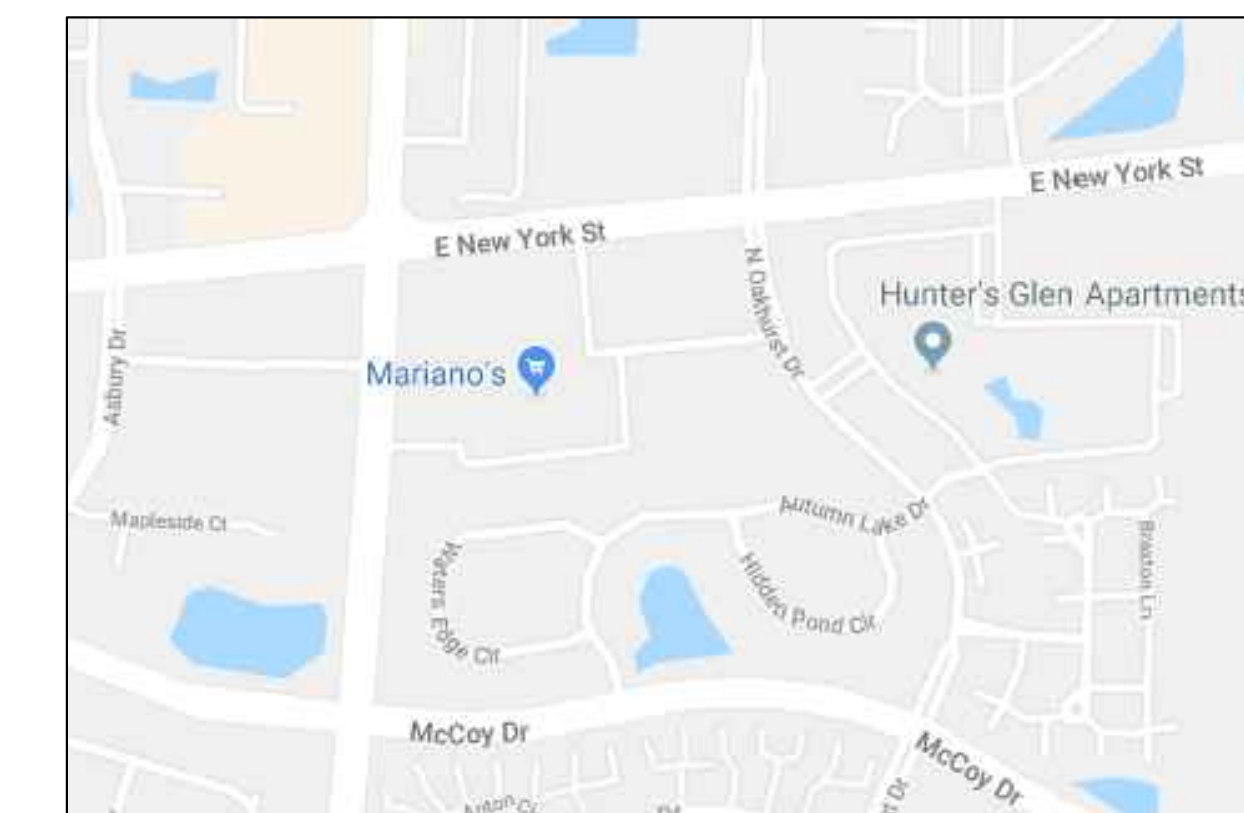
TITLE:
LANDSCAPE PLAN FOR LOT 1
IN PDA RESUBDIVISION

DATE:	08/21/2018	PROJECT #	2018-018
PRINCIPAL:	MK	SHEET:	L1.0
PROJECT MGR:	LD	DRAWN BY:	DW

DRAWING FILE PATH:
N:\2018\DRAWINGS
WATERLEAF LANDSCAPE PLAN

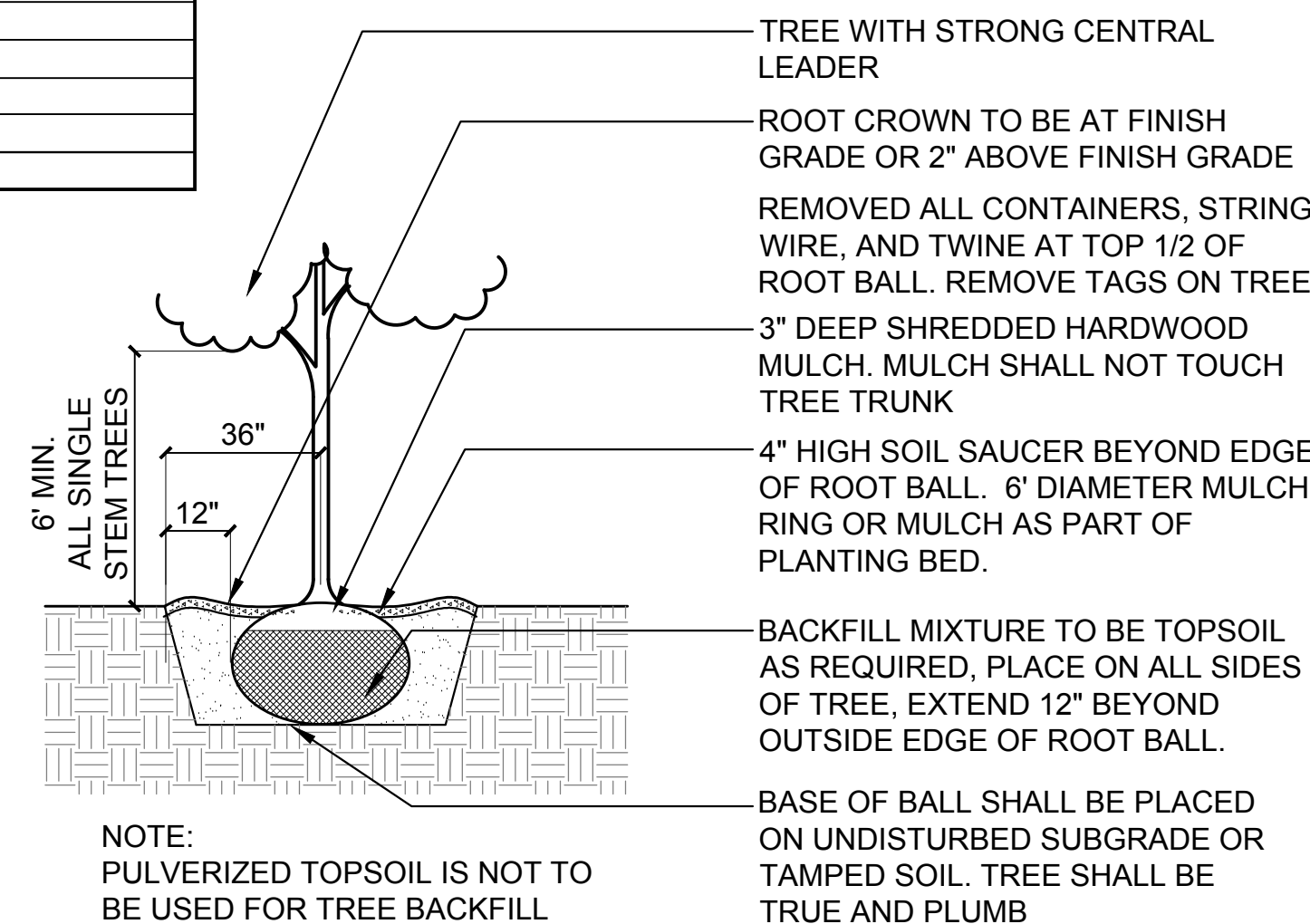
Landscape Implementation Data Table: Plant List by Category							
	QTY	Percent	SYM	BOTANICAL NAME (Family / Genus / Species)	COMMON NAME	SIZE	COMMENTS
Canopy Trees	6	15%		Sapindaceae Acer rubrum	Red Maple	2.5 Cal.	
	6	15%		Cannabaceae Celtis occidentalis 'Chicagoland'	Chicagoland Hackberry	2.5 Cal.	
	7	17%		Fabaceae Gymnocladus dioicus	Kentucky Coffeetree	2.5 Cal.	
	4	10%		Platanaceae Platanus acerifolia 'Morton Circle'	London Plane Tree	2.5 Cal.	
	6	15%		Fagaceae Quercus muehlenbergii	Chinkapin Oak	2.5 Cal.	
	5	12%		Malvaceae Tilia americana 'Redmond'	Redmond Linden	2.5 Cal.	
	7	17%		Ulmaceae Ulmus 'Morton'	Accolade Elm	2.5 Cal.	
Total:	41	100%					
Evergreen Trees	4	27%		Pinaceae Abies concolor	White Fir	6 Ft	
	3	20%		Pinaceae Picea glauca	Black Hills Spruce	6 Ft	
	5	33%		Pinaceae Picea pungens	Colorado Blue Spruce	6 Ft	
	3	20%		Cupressaceae Taxodium distichum	Bald Cypress	6 Ft	
	Total:	15	100%				
Understory Trees	2	33%		Rosaceae Amelanchier grandiflora 'Autumn Brilliance'	Autumn Brilliance Serviceberry	2.5 Cal.	
	2	33%		Cornaceae Cornus kousa	Kousa Dogwood	2.5 Cal.	
	1	17%		Rosaceae Malus 'Prairiefire'	Prairiefire Crabapple	2.5 Cal.	
	1	17%		Oleaceae Syringa reticulata	Japanese Tree Lilac	2.5 Cal.	
Total:	6	100%					
Deciduous Shrubs	49	29%		Oleaceae Forsythia 'NIMBUS'	Sugar Baby Forsythia	18" Ht. x 18" Spr.	
	20	12%		Hydrangeaceae Hydrangea arborescens 'Abetwo'	Incrediball Hydrangea	24" Ht. x 24" Spr.	
	29	17%		Anacardiaceae Rhus aromatica 'Grow Low'	Grow Low Sumac	18" Ht. x 24" Spr.	
	38	23%		Rosaceae Rosa 'Radyod'	Blushing Knock Out Rose	18" Ht. x 18" Spr.	
	23	14%		Rosaceae Spirea x media 'Darsnorm'	Snow Storm Spirea	18" Ht. x 24" Spr.	
	9	5%		Oleaceae Syringa meyeri 'Palibin'	Dwarf Korean Lilac	18" Ht. x 24" Spr.	
	Total:	168	100%				
Evergreen Shrubs	36	36%		Taxaceae Taxus media 'Denseiformis'	Dense Yew	24" Ht. x 24" Spr.	
	22	22%		Buxaceae Buxus 'Green Mountain'	Green Mountain Boxwood	24" Ht. x 24" Spr.	
	32	32%		Cupressaceae Juniperus chinensis 'Kallay's Compact'	Kallay's Compact Pfizer Juniper	18" Ht. x 24" Spr.	
	9	9%		Cupressaceae Thuja occidentalis 'Smaragd'	Emerald Green Arborvitae	4 Ft	
Total:	99	100%					
Perennials, Ornamental Grasses, and Vines	13	6%		Ranunculaceae Clematis terniflora	Sweet Autumn Clematis	#1 Cont.	
	75	33%		Xanthorrhoeaceae Hemerocallis 'Fragrant Returns'	Fragrant Returns Daylily	#1 Cont.	
	9	4%		Saxifragraceae Heuchera 'Fire Alarm'	Fire Alarm Alumroot	#1 Cont.	
	10	4%		Poaceae Pennisetum alopecuroides 'Piglet'	Piglet Fountain Grass	#1 Cont.	
	120	53%		Apocynaceae Vinca minor 'Atropurpurea'	Purple Periwinkle	#1 Cont.	
Total:	227	100%					

LOCATION MAP Not to Scale

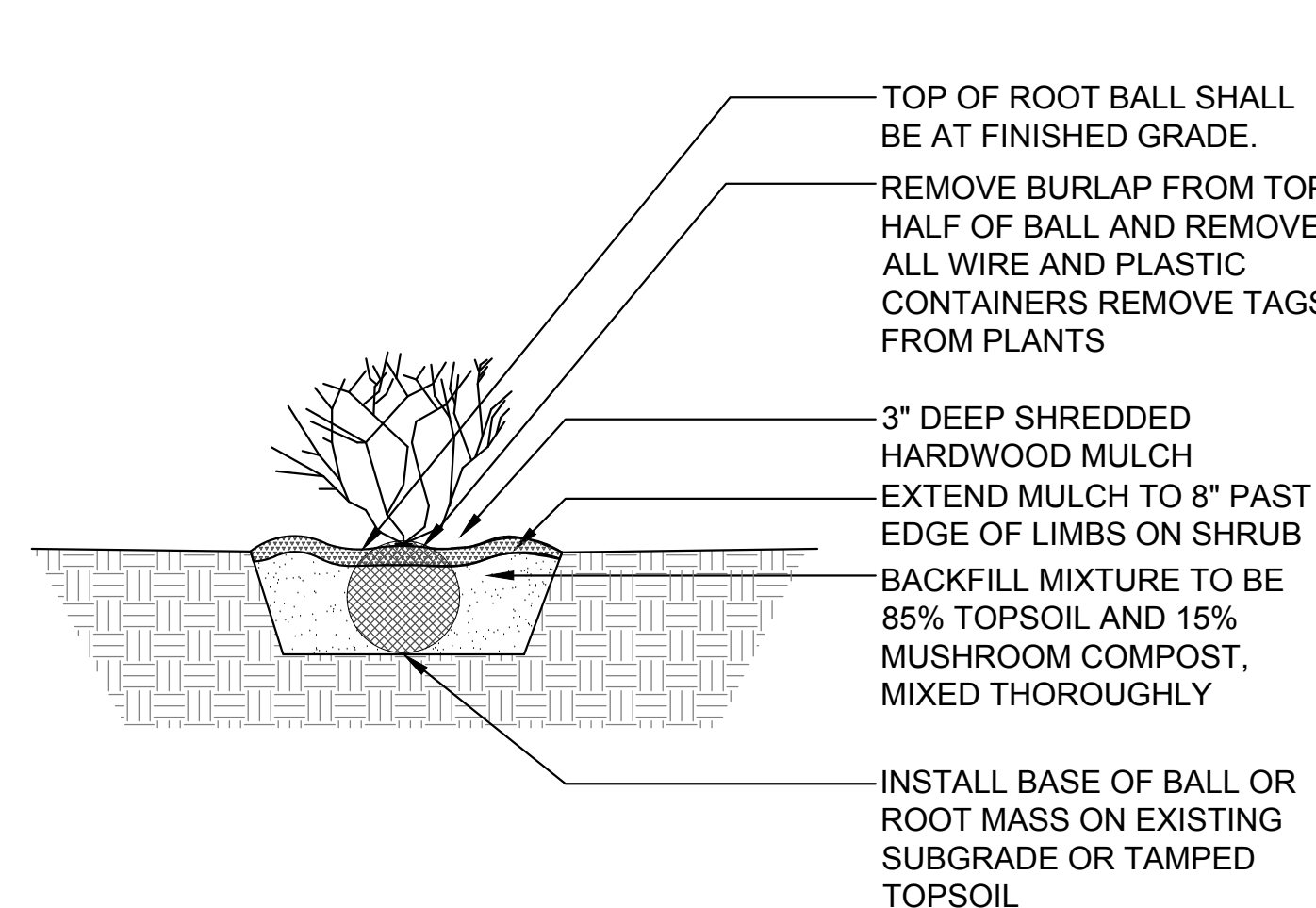


GENERAL NOTES: LANDSCAPE

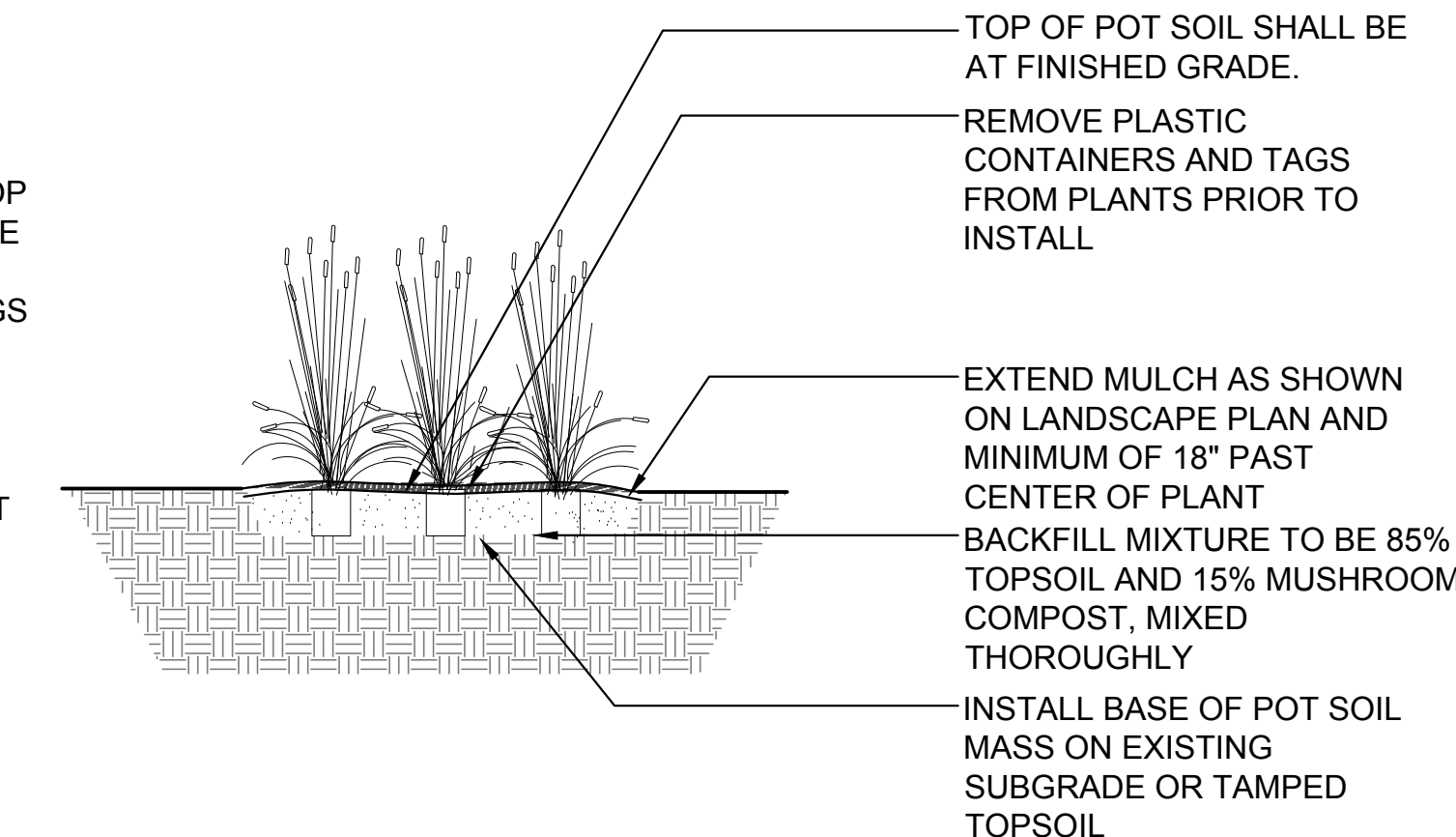
- Notes indicated on grading plans shall pertain to landscape plans. Final grade of planting beds shall be as per grading plan.
- The landscape contractor shall be responsible for making themselves familiar with all underground utilities and structures.
- All existing plant material and trees shall be saved and protected unless otherwise noted. Contractor to protect new and existing trees and landscaping from damage and shall restore all areas disturbed as a result of construction.
- Plant material shall be supplied from Northern Illinois nursery stock, shall be dug the planting season it is installed, and shall conform to the American Association of Nurseryman's standards.
- Plant material shall be size and type specified. Substitution of plant material shall be on a case by case basis and approved in writing by the Owner's Representative. In no case shall plant material be smaller than indicated in the plans.
- Do not willfully proceed with plantings as designed when it is obvious that obstructions and/or grade differences exist that may not have been known during the design process. Such conditions shall be immediately brought to the attention of the Owner's Representative.
- All plant material shall be inspected and approved by the Owner's Representative prior to the installation of any and all plant material.
- Plant locations shall be flagged in field with Owner's Rep. Final location of all plant material shall be subject to approval of the Owner's Representative prior to digging any holes. The landscape contractor is responsible for providing Owner's Representative with 48 hour minimum advance notice prior to planting.
- Plants shall be watered on the day they are planted and maintained with watering until final acceptance of the project.
- Apply a pre-emergent as per manufacturer's specification prior to installing mulch.
- Beds and tree rings (6" diameter) shall have 3" of hardwood shredded mulch applied and a 4" deep spade edge at lawn. Trees that are not located in beds, shall have a tree ring.
- Landscape plant material shall be guaranteed for 12 months from final acceptance. Any plant 1/3 dead or more shall be replaced under the guarantee.
- Contractor to prepare landscape beds by roto-tilling 2" of Mushroom Compost into new beds. Do not add compost nor roto-till within drip line of existing trees.
- Lawn Seeding shall be under favorable weather conditions, and shall follow dates in specification.
- Turf mixes shall be installed and lawn established at all disturbed areas.
- Do not overseed into mulch beds, and paving.
- Contractor shall restore all areas disturbed as a result of construction.



1 Tree Installation SCALE: N.T.S. d-plant-tree_12



2 Shrub Installation SCALE: N.T.S. d-plant-shrub_12



3 Perennial & Ornamental Grass Installation SCALE: 1" = 1'-0" d-perennials



charles vincent george ARCHITECTS

1245 E. Diehl Rd. Suite 101 Naperville, Illinois 60563 | 630.357.2023 F | 630.357.2632 cvgarchitects.com

STAMP: PRELIMINARY NOT FOR CONSTRUCTION

EXPIRES 11/30/2018 IL ARCHITECTURAL DESIGN FIRM NO.: 184-000544 DATE:

COPYRIGHT: THE ATTACHED DRAWINGS ARE COPYRIGHTED AND ARE FOR INFORMATIONAL PURPOSES ONLY. CHARLES VINCENT GEORGE ARCHITECTS, INC. HAS NO MEANS OF ENSURING THAT THE DRAWINGS WILL NOT, OR HAVE NOT BEEN AFFECTED BY ANY FILE CONVERSION OR PRINTING PROCESS AND CANNOT THEREFORE BE RESPONSIBLE FOR THEIR CONTENTS. IF THE DRAWINGS ARE TO BE USED BY A THIRD PARTY FOR ANY PURPOSE, THE THIRD PARTY SHALL BE WHOLLY RESPONSIBLE FOR ENSURING THE ACCURACY OF THE INFORMATION CONTAINED THEREIN. ALL UNAUTHORIZED PRINTING AND/OR DISTRIBUTION IS STRICTLY PROHIBITED WITHOUT PRIOR WRITTEN CONSENT FROM CHARLES VINCENT GEORGE ARCHITECTS, INC.

ISSUE AND/OR REVISIONS:		
NO.	DATE	DESCRIPTION
01	09/07/2018	Issue for Permit
02	10/04/2018	Revision
03	10/10/2018	Revision

PROJECT:

NEW GROUND-UP WATERLEAF 3055 E NEW YORK ST AURORA, IL

TITLE: LANDSCAPE PLAN

DATE: 08/21/2018	PROJECT # 2018-018
PRINCIPAL: MK	SHEET:
PROJECT MGR: LD	DRAWN BY: DW
DRAWING FILE PATH: I:\2018\2018\DRAWINGS\WATERLEAF LANDSCAPE PLAN	

L1.1