

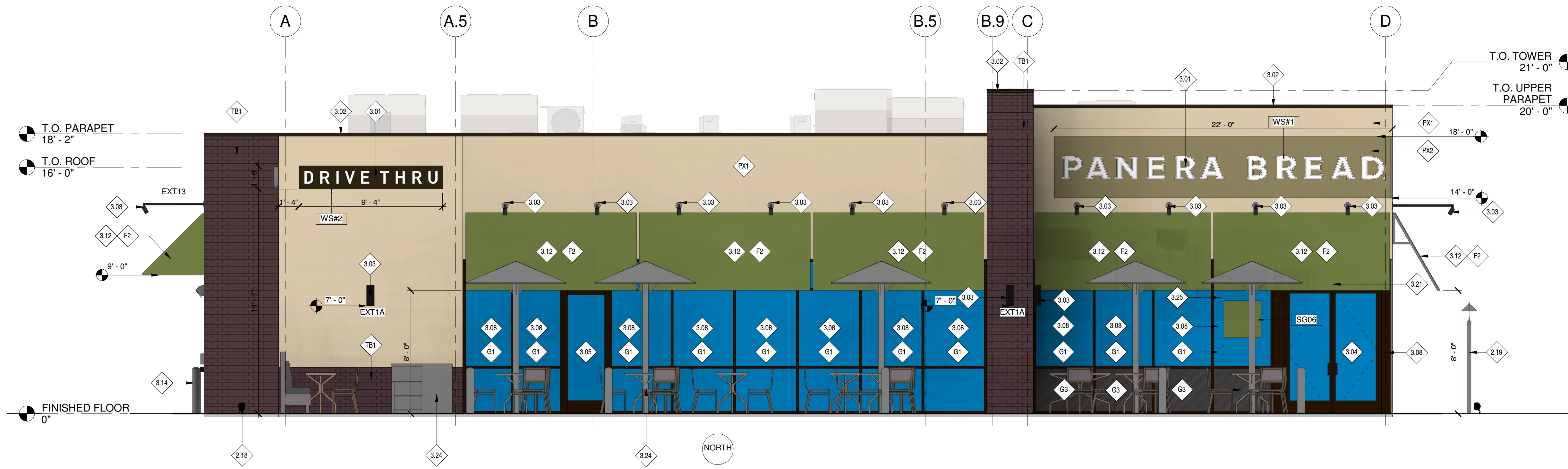
### KEYED NOTES

- 2.14 DRIVE THRU CAMERA (ITEM #66). SEE SHEETS A301 AND A302 FOR MOUNTING HEIGHTS. SEE ELECTRICAL FOR CIRCUITING. REVIEW PLACEMENT WITH PANERA ASSETS PROTECTIONS MGR.
- 2.18 NEW EXTERIOR GROUND LIGHT
- 2.19 SIDEWALK POLE LIGHT FIXTURE
- 2.20 INTERNALLY ILLUMINATED SIGN PROVIDED AND INSTALLED BY SIGN VENDOR UNDER SEPARATE PERMIT. GC TO PROVIDE BLOCKING IN WALL FOR SIGN AND PROVIDE ACCESS PANEL ON BACKSIDE OF PARAPET FOR ACCESS AS REQUIRED. (UNDER SEPARATE SIGNAGE PERMIT)
- 3.02 PRE-FINISHED METAL 2-PIECE SNAP-ON COMPRESSION COPING BY DURO-LAST | FINISH: DARK BRONZE
- 3.03 WALL MOUNTED LIGHT FIXTURE. FIXTURES SHALL BE PROVIDED AND INSTALLED BY GC. GC TO PROVIDE POWER AS REQUIRED. REFER TO REFLECTED CEILING PLAN FOR ADDITIONAL INFORMATION.
- 3.04 MAIN ENTRANCE/EXIT | HAGER 910B 56" OFFSET MOUNTING VERTICAL PULL | REFER TO A601 AND A611 FOR ADDITIONAL INFORMATION.
- 3.05 SECONDARY ENTRANCE/EXIT | HAGER 910B 56" OFFSET MOUNTING VERTICAL PULL | REFER TO A601 AND A611 FOR ADDITIONAL INFORMATION.
- 3.06 HOLLOW METAL SERVICE DOOR. REFER TO A601 FOR ADDITIONAL INFORMATION. | PAINT TO MATCH ADJACENT WALL COLOR.
- 3.08 ALUMINUM STOREFRONT SYSTEM WITH 1" INSULATED GLAZING. REFER TO SHEET A611 FOR FURTHER INFORMATION.
- 3.12 PRE-MANUFACTURED FABRIC AWNING PROVIDED AND INSTALLED BY SIGN VENDOR UNDER SEPARATE PERMIT. GC SHALL PROVIDE APPROPRIATE BLOCKING AS REQUIRED BY SIGN VENDOR. REFER TO SHOP DRAWINGS FOR ADDITIONAL INFORMATION.
- 3.14 4" DIA. CONCRETE BOLLARD | FINISH: PAINT TO MATCH MKX1 | REFER TO SHEET A014 FOR FURTHER INFORMATION

### KEYED NOTES

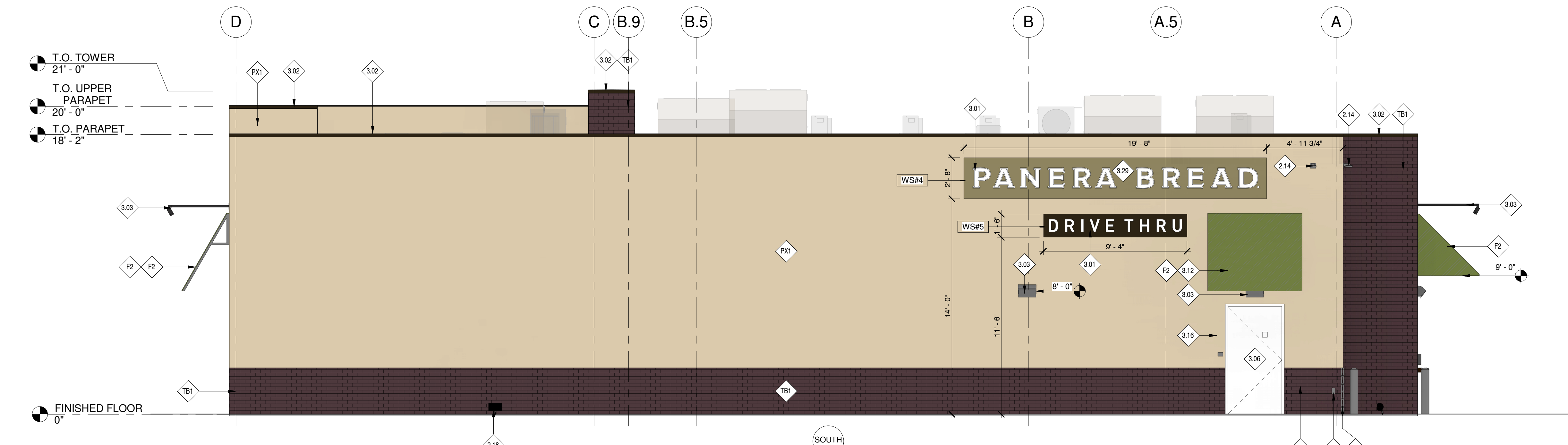
- 3.16 FIRE DEPARTMENT ACCESS BOX | INSTALLED ADJACENT SERVICE DOOR. COORDINATE LOCATION WITH LOCAL FIRE DEPARTMENT.
- 3.17 FIRE DEPARTMENT CONNECTION (FDC)
- 3.19 HOSE BIBB | RECESSED STAINLESS STEEL BOX. REFER TO PLUMBING DRAWINGS FOR LOCATION AND ADDITIONAL INFORMATION.
- 3.21 BUILDING ADDRESS SIGN | VERIFY SIZE, LOCATION, AND STYLE WITH LOCAL FIRE DEPARTMENT
- 3.23 STANDARD METAL 1.25" OC GUARDRAIL, PAINTED TO MATCH P107
- 3.24 EXTERIOR PATIO FURNITURE AND EQUIPMENT. REFER TO SHEET A701 FOR FURTHER INFORMATION.
- 3.25 WINDOW BOX PANERA LOGO SIGN
- 3.29 SIGN BACKGROUNND PANEL TO MATCH PAINT COLOR PX2.
- F2 FABRIC AWNING | OPEN ENDED SLAB | COLOR: GREEN PRINTED FABRIC, (3" PROJECTION / 4' HEIGHT AT TYPICAL & 4' PROJECTION @ DRIVE THRU)
- G1 ALUMINUM STOREFRONT | 2" x 4 1/2" PROFILE | THERMAL BREAK | COLOR: DARK BRONZE | 1" CLEAR INSULATED GLAZING: PPG SOLARBAN 70XL (OR APPROVED EQUAL) | REFER TO SHEET A611 FOR ADDITIONAL INFORMATION
- G3 ALUMINUM STOREFRONT | 2" x 4 1/2" PROFILE | THERMAL BREAK | COLOR: DARK BRONZE | 1" INSULATED SPANDREL GLAZING: PPG SOLARBAN 70XL (OR APPROVED EQUAL) | REFER TO SHEET A611 FOR ADDITIONAL INFORMATION
- PX1 EIFS SYSTEM | TEXTURE: TO MATCH DRYVIT LYMESTONE FINISH | COLOR: (P103) BENJAMIN MOORE #HC-39 PUTNAM IVORY
- PX2 EIFS SYSTEM | TEXTURE: TO MATCH DRYVIT LYMESTONE FINISH | COLOR: (P92) BENJAMIN MOORE #2143-20 ALLIGATOR GREEN
- TB1 THIN BRICK VENEER, MODULAR | MRF: ENDICOTT, VELOUR | COLOR: SIENNA IRONSPOT

# ELEVATIONS



1 NORTH ELEVATION

1/4" = 1'-0"



2 SOUTH ELEVATION

1/4" = 1'-0"

Elevation Data Table: Elevations		
Description	Value	Unit
a) Building Height in Feet (Typical)	21.00	Feet
b) Total Building Square Footage (Typical)	4,323.00	Square Feet
c) First Floor Building Square Footage (Typical)	4,323.00	Square Feet
d) Number of building stories (Typical)	1.00	Square Feet
e) Exterior Material List (including colors) for all buildings and accessory structures:		
EIFS System - Texture Limestone   Color: Benjamin Moore #HC-39 Putnam Ivory		
EIFS System - Texture Limestone   Color: Benjamin Moore #2143-20 Alligator Green (accent color)		
Thin Brick Veneer   Modular   Endicott, Velour   Color: Sienna Ironspot		
Storefront - Dark Bronze Aluminum		
Awnings - Custom Pattern Vinyl		

Elevation Data Table: Wall Signage			
Wall Sign #	Description	Value	Unit
1	i) Width of Facade - on which Sign is Located	20.33	Feet
	ii) Height of Facade - on which Sign is Located	21.00	Feet
	iii) Square Footage of Facade - on which Sign is Located	426.99	Square Feet
	iv) Width of Sign Face	20.70	Feet
	v) Height of Sign Face	1.50	Feet
vi) Square Footage of Sign Face		31.05	Square Feet
vii) Percent of Sign Coverage - Facade on which Sign is Located		6%	Percent
2	i) Width of Facade - on which Sign is Located	40.00	Feet
	ii) Height of Facade - on which Sign is Located	18.17	Feet
	iii) Square Footage of Facade - on which Sign is Located	726.60	Square Feet
	iv) Width of Sign Face	9.33	Feet
	v) Height of Sign Face	1.50	Feet
vi) Square Footage of Sign Face		14.00	Square Feet
vii) Percent of Sign Coverage - Facade on which Sign is Located		2%	Percent
3	i) Width of Facade - on which Sign is Located	83.00	Feet
	ii) Height of Facade - on which Sign is Located	18.17	Feet
	iii) Square Footage of Facade - on which Sign is Located	1,508.49	Square Feet
	iv) Width of Sign Face	19.00	Feet
	v) Height of Sign Face	2.67	Feet
vi) Square Footage of Sign Face		50.49	Square Feet
vii) Percent of Sign Coverage - Facade on which Sign is Located		3%	Percent
4	i) Width of Facade - on which Sign is Located	72.42	Feet
	ii) Height of Facade - on which Sign is Located	18.17	Feet
	iii) Square Footage of Facade - on which Sign is Located	1,315.87	Square Feet
	iv) Width of Sign Face	19.00	Feet
	v) Height of Sign Face	2.67	Feet
vi) Square Footage of Sign Face		50.49	Square Feet
vii) Percent of Sign Coverage - Facade on which Sign is Located		4%	Percent
5	i) Width of Facade - on which Sign is Located	72.42	Feet
	ii) Height of Facade - on which Sign is Located	18.17	Feet
	iii) Square Footage of Facade - on which Sign is Located	1,315.87	Square Feet
	iv) Width of Sign Face	9.33	Feet
	v) Height of Sign Face	1.50	Feet
vi) Square Footage of Sign Face		14.00	Square Feet
vii) Percent of Sign Coverage - Facade on which Sign is Located		1%	Percent

Elevation Data Table: Ground Signage			
Ground Sign #	Description	Value	Unit
1	i) Length of street frontage - on which Sign is Located	209	Feet
	ii) Width of Sign Face	8.00	Feet
	iii) Height of Sign Face	6.70	Feet
	iv) Square Footage of Sign Face	40	Square Feet
	v) Height of Sign (overall)	8	Feet
	vi) Width of Sign (overall)	8	Feet
	vii) Type of Sign	Monument Sign	
viii) Is there a Digital Display		No	
ix) Yes then, Location of Digital Display on the sign			
x) Yes then, Location of Digital Display on the sign			
xi) Height of Digital Display			
xii) Width of Digital Display			
xiii) Square Footage of Digital Display			
xiv) Percent of Digital Display Sign Coverage			
2	i) Length of street frontage - on which Sign is Located	209	Feet
	ii) Width of Sign Face	2.20	Feet
	iii) Height of Sign Face	1.10	Feet
	iv) Square Footage of Sign Face	3	Square Feet
	v) Height of Sign (overall)	3	Feet
	vi) Width of Sign (overall)	3	Feet
	vii) Type of Sign	Thank You/Not Exist	
viii) Is there a Digital Display		No	
ix) Yes then, Location of Digital Display on the sign			
x) Yes then, Location of Digital Display on the sign			
xi) Height of Digital Display			
xii) Width of Digital Display			
xiii) Square Footage of Digital Display			
xiv) Percent of Digital Display Sign Coverage			
3	i) Length of street frontage - on which Sign is Located	176	Feet
	ii) Width of Sign Face	2.80	Feet
	iii) Height of Sign Face	1.10	Feet
	iv) Square Footage of Sign Face	3	Square Feet
	v) Height of Sign (overall)	3	Feet
	vi) Width of Sign (overall)	3	Feet
	vii) Type of Sign	Directional Sign	
viii) Is there a Digital Display		No	
ix) Yes then, Location of Digital Display on the sign			
x) Yes then, Location of Digital Display on the sign			
xi) Height of Digital Display			
xii) Width of Digital Display			
xiii) Square Footage of Digital Display			
xiv) Percent of Digital Display Sign Coverage			
4	i) Length of street frontage - on which Sign is Located	209	Feet
	ii) Width of Sign Face	4.60	Feet
	iii) Height of Sign Face	4.60	Feet
	iv) Square Footage of Sign Face	21	Square Feet
	v) Height of Sign (overall)	6	Feet
	vi) Width of Sign (overall)	6	Feet
	vii) Type of Sign	Invoice Board	
viii) Is there a Digital Display		No	
ix) Yes then, Location of Digital Display on the sign			
x) Yes then, Location of Digital Display on the sign			
xi) Height of Digital Display			
xii) Width of Digital Display			
xiii) Square Footage of Digital Display			
xiv) Percent of Digital Display Sign Coverage			
5	i) Length of street frontage - on which Sign is Located	209	Feet
	ii) Width of Sign Face	7.33	Feet
	iii) Height of Sign Face	4.60	Feet
	iv) Square Footage of Sign Face	33	Square Feet
	v) Height of Sign (overall)	6	Feet
	vi) Width of Sign (overall)	6	Feet
	vii) Type of Sign	Menu Board	
viii) Is there a Digital Display		Yes	
ix) Yes then, Location of Digital Display on the sign		Center	
x) Yes then, Location of Digital Display on the sign			
xi) Height of Digital Display			
xii) Width of Digital Display			
xiii) Square Footage of Digital Display			
xiv) Percent of Digital Display Sign Coverage			
6	i) Length of street frontage - on which Sign is Located	176	Feet
	ii) Width of Sign Face	2.40	Feet
	iii) Height of Sign Face	2.40	Feet
	iv) Square Footage of Sign Face	6	Square Feet
	v) Height of Sign (overall)	6	Feet
	vi) Width of Sign (overall)	6	Feet
	vii) Type of Sign	Window Sign	
viii) Is there a Digital Display		No	
ix) Yes then, Location of Digital Display on the sign			
x) Yes then, Location of Digital Display on the sign			
xi) Height of Digital Display			
xii) Width of Digital Display			
xiii) Square Footage of Digital Display			
xiv) Percent of Digital Display Sign Coverage			
7	i) Length of street frontage - on which Sign is Located	209	Feet
	ii) Width of Sign Face	1.50	Feet
	iii) Height of Sign Face	2.7	Feet
	iv) Square Footage of Sign Face	4	Square Feet
	v) Height of Sign (overall)	4	Feet
	vi) Width of Sign (overall)	3	Feet
	vii) Type of Sign	Speaker @ Exit Canopy	
viii) Is there a Digital Display		No	
ix) Yes then, Location of Digital Display on the sign			
x) Yes then, Location of Digital Display on the sign			
xi) Height of Digital Display			
xii) Width of Digital Display			
xiii) Square Footage of Digital Display			
xiv) Percent of Digital Display Sign Coverage			

Bakery-Cafe:  

# #0777

  
 Project Team:  
**FREDRICK J. GOGLIA**  
 ARCHITECT, NCARB, RID  
 1930 CRAIG ROAD, SUITE 300 ST. LOUIS, MO 63146  
 PH. (314) 415-2400 FAX (314) 415-2300 www.crcv.com

Professional Seal:  
 Project Title:

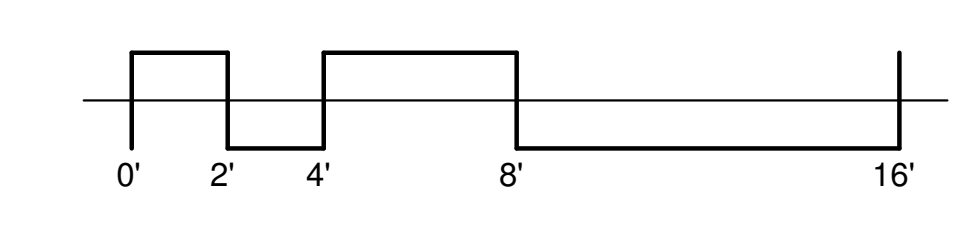
Permit/BBG Package  
**Bakery Cafe #0777**  
 491 ILLINOIS ROUTE 59  
 AURORA, IL 60504



PETITIONER:  
 PANERA LLC  
 BRIAN BARNARD  
 3630 SOUTH GEYER RD, SUITE 100  
 ST. LOUIS, MO 63127

No.	Description	Date

ELEVATIONS		
Project Number:	Sheet Number:	
160132	A301	
Drawn By:		
MH		
Issue Date:		
08.29.2016		
DPM	DM:	CPM:
BRIAN B.	DAN C.	KEVIN C.



Elevation Data Table: Elevations		
Description	Value	Unit
a) Building Height in feet (typical)	21.00	feet
b) Total Building Square Footage (typical)	4,323.00	Square Feet
c) First Floor Building Square Footage (typical)	4,323.00	Square Feet
d) Number of building stories (typical)	1.00	Square Feet
e) Exterior Material List (including colors) for all buildings and accessory structures: EIFS System – Texture Limestone   Color: Benjamin Moore #HC-39 Putnam Ivory EIFS System – Texture Limestone   Color: Benjamin Moore #2143-20 Alligator Green (accent color) Thin Brick Veneer   Modular   Endicott, Velour   Color: Sienna Ironspot Storefront – Dark Bronze Aluminum Awnings – Custom Pattern Vinyl		

Bakery-Cafe:

# #0777

Project Team:  
**FREDRICK J. GOGLIA**  
ARCHITECT, NCARB, RD  
1950 CRAIG ROAD, SUITE 300 ST. LOUIS, MO 63146  
PH: (314) 415-2400 FAX (314) 415-2300 www.rcvc.com

Professional Seal:

Project Title:

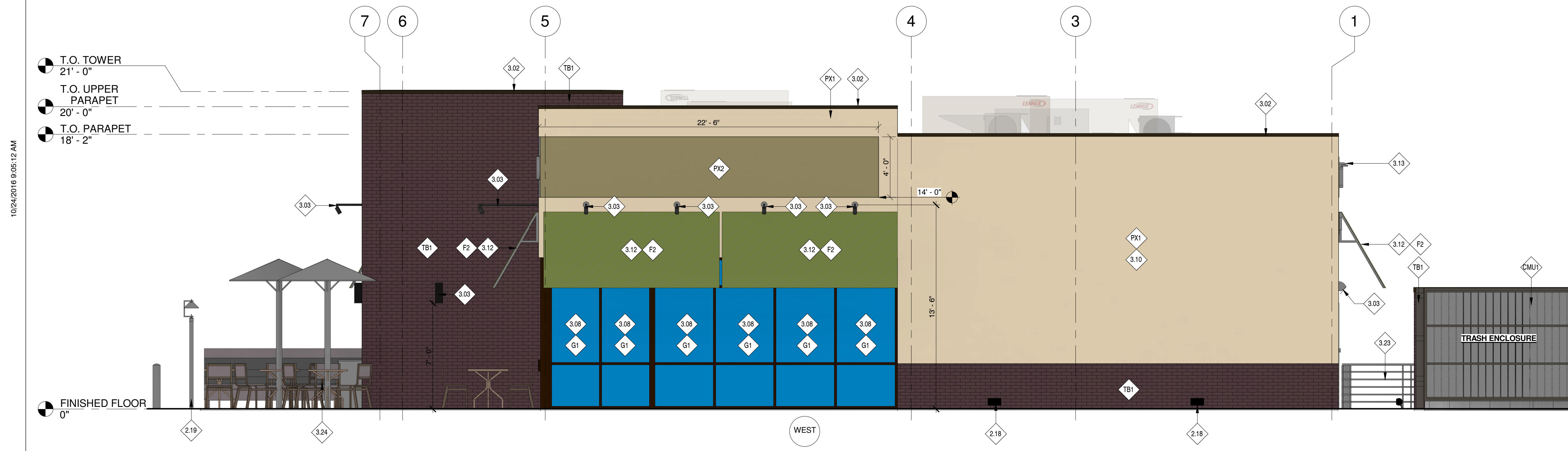
**Bakery Cafe #0777**  
491 ILLINOIS ROUTE 59  
AURORA, IL 60504



PETITIONER:  
PANERA, LLC  
BRIAN BARNARD  
3630 SOUTH GEYER RD, SUITE 100  
ST. LOUIS, MO 63127

No.	Description	Date

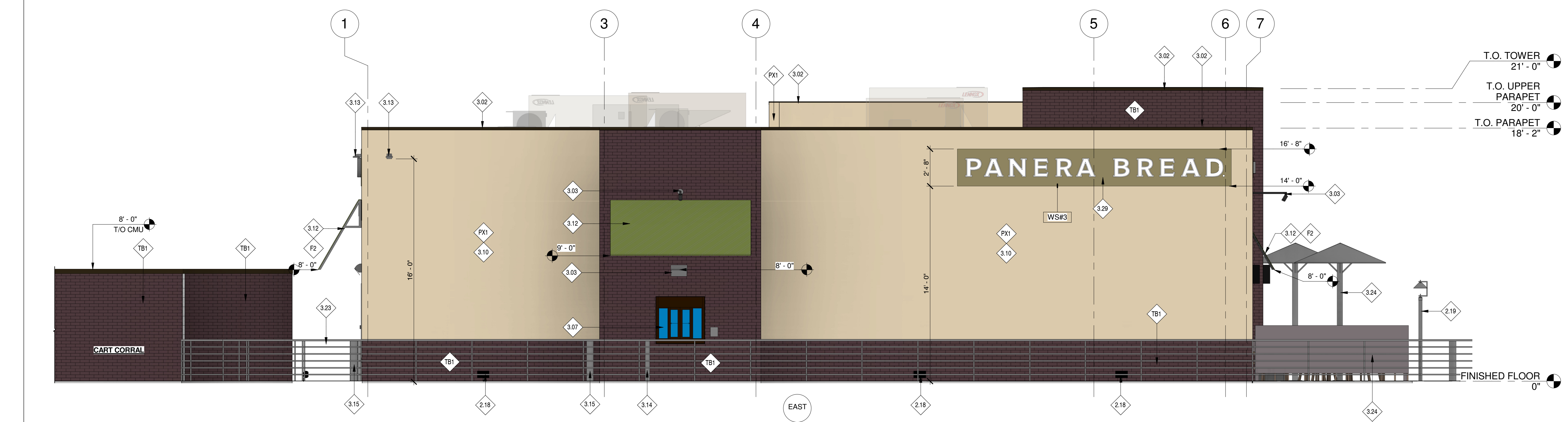
**ELEVATIONS**  
Project Number: 160132  
Sheet Number: **A302**  
Drawn By: MH, CAO  
Issue Date: 08.29.2016  
DPM: DAN C. CPM: KEVIN C.  
BRIAN B. DAN C. KEVIN C.



**1 WEST ELEVATION**  
1/4" = 1'-0"

### KEYED NOTES

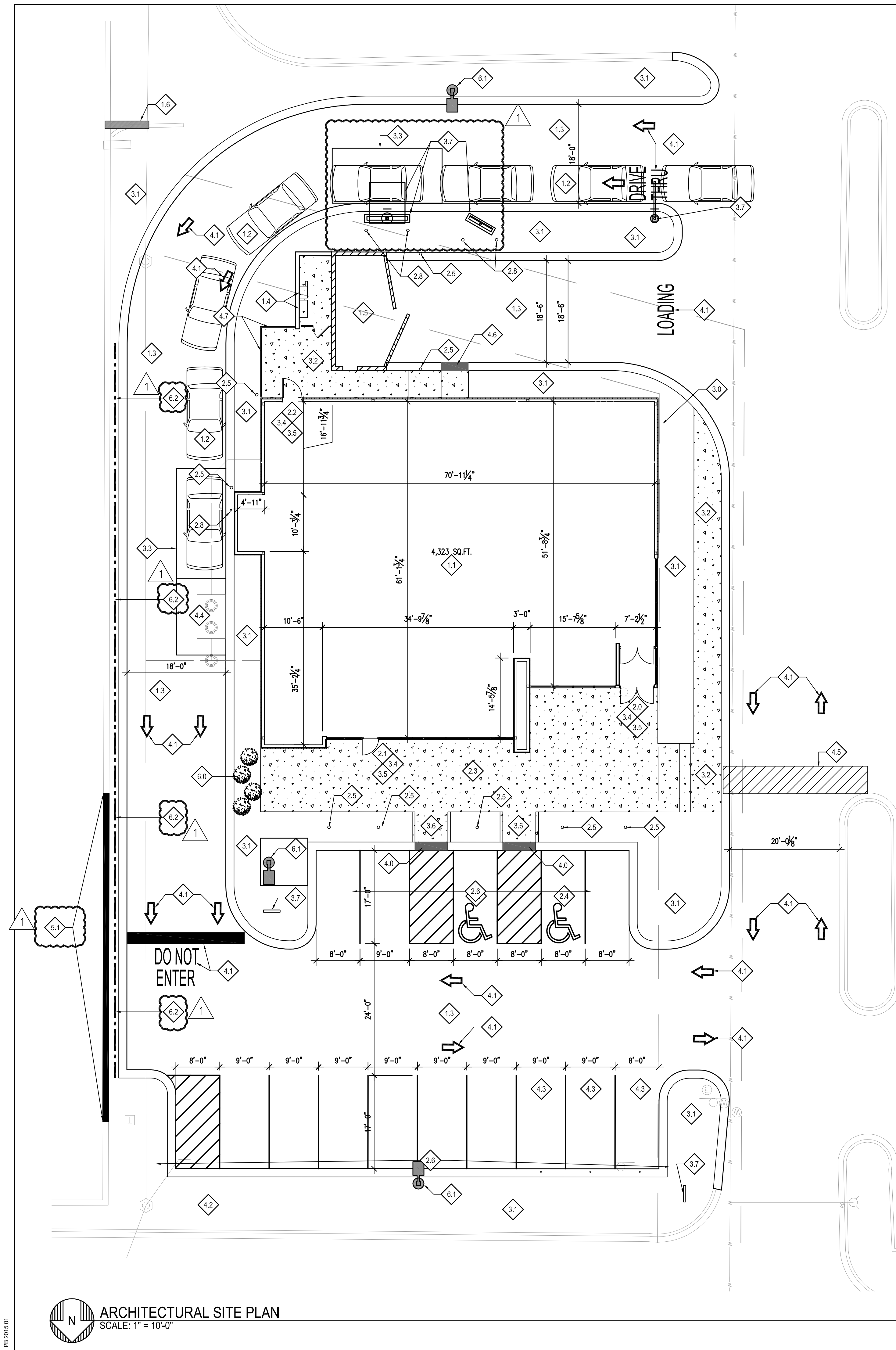
- 2.18 NEW EXTERIOR GROUND LIGHT
- 2.19 SIDEWALK POLE LIGHT FIXTURE
- 3.02 PRE-FINISHED METAL 2-PIECE SNAP-ON COMPRESSION COPING BY DUROLAST | FINISH: DARK BRONZE
- 3.03 WALL MOUNTED LIGHT FIXTURE. FIXTURES SHALL BE PROVIDED AND INSTALLED BY GC. GC TO PROVIDE POWER AS REQUIRED. REFER TO REFLECTED CEILING PLAN FOR ADDITIONAL INFORMATION.
- 3.07 DRIVE-THRU WINDOW | MFR: QUIKSERV | MODEL: FM42E | COLOR TO MATCH STOREFRONT.
- 3.08 ALUMINUM STOREFRONT SYSTEM WITH 1" INSULATED GLAZING. REFER TO SHEET A611 FOR FURTHER INFORMATION.
- 3.10 CONTROL JOINT(S) WHERE INDICATED | PROVIDE SEALANT TO MATCH ADJACENT WALL MATERIAL.
- 3.12 PRE-MANUFACTURED FABRIC AWNING PROVIDED AND INSTALLED BY SIGN VENDOR UNDER SEPARATE PERMIT. GC SHALL PROVIDE APPROPRIATE BLOCKING AS REQUIRED BY SIGN VENDOR. REFER TO SHOP DRAWINGS FOR ADDITIONAL INFORMATION.
- 3.13 SECURITY CAMERA | COORDINATE ROUGH-IN LOCATION(S) AND HEIGHTS WITH PANERA CONSTRUCTION MANAGER PRIOR TO INSTALLATION.
- 3.14 4" DIA. CONCRETE BOLLARD | FINISH: PAINT TO MATCH 'MX1' | REFER TO SHEET A014 FOR FURTHER INFORMATION
- 3.15 6" DIA. CONCRETE BOLLARD | FINISH: PAINT TO MATCH 'MX1' | REFER TO SHEET A014 FOR FURTHER INFORMATION
- 3.23 STANDARD METAL 1.25" OC GUARDRAIL, PAINTED TO MATCH 'P107'
- 3.24 EXTERIOR PATIO FURNITURE AND EQUIPMENT. REFER TO SHEET A701 FOR FURTHER INFORMATION.
- 3.29 SIGN BACKGROUND PANEL TO MATCH PAINT COLOR PX2.
- CMU1 SMOOTH FACE CONCRETE BLOCK. PAINT TO MATCH MAIN BUILDING.
- F2 FABRIC AWNING | OPEN ENDED SLAB | COLOR: GREEN PRINTED FABRIC, (3" PROJECTION / 4" HEIGHT AT TYPICAL & 4" PROJECTION @ DRIVE THRU)
- G1 ALUMINUM STOREFRONT | 2" x 4 1/2" PROFILE | THERMAL BREAK | COLOR: DARK BRONZE | 1" CLEAR INSULATED GLAZING: PPG SOLARBAN 70XL (OR APPROVED EQUAL) | REFER TO SHEET A611 FOR ADDITIONAL INFORMATION.
- PX1 EIFS SYSTEM | TEXTURE: TO MATCH DRYVIT LYMESTONE FINISH | COLOR: (P103) BENJAMIN MOORE #HC-39 PUTNAM IVORY
- PX2 EIFS SYSTEM | TEXTURE: TO MATCH DRYVIT LYMESTONE FINISH | COLOR: (P92) BENJAMIN MOORE #2143-20 ALLIGATOR GREEN
- TB1 THIN BRICK VENEER, MODULAR | MRF: ENDICOTT, VELOUR | COLOR: SIENNA IRONSPOT



**2 EAST ELEVATION**  
1/4" = 1'-0"

10/24/2016 9:05:12 AM

PS 2016.01



**KEYED NOTES:**

- 1.1 PROPOSED PANERA BUILDING
- 1.2 NEW DRIVE-THRU LANE. SEE CIVIL DRAWINGS FOR ADDITIONAL INFORMATION
- 1.3 NEW ASPHALT PAVING. SEE CIVIL DRAWINGS FOR ADDITIONAL INFORMATION
- 1.4 ELECTRICAL SWITCH GEAR CABINETS. SEE ELECTRICAL DRAWINGS FOR ADDITIONAL INFORMATION
- 1.5 NEW TRASH ENCLOSURE. SEE SHEET A012 FOR ADDITIONAL INFORMATION
- 1.6 PROPOSED MONUMENT SIGN. REFER TO SIGNAGE SHOP DRAWINGS FOR ADDITIONAL INFORMATION. G.C. IS RESPONSIBLE FOR BRICK BASE.
- 2.0 PRIMARY BUILDING ENTRANCE
- 2.1 SECONDARY ENTRANCE
- 2.2 HOLLOW METAL SERVICE DOOR
- 2.3 CONCRETE PATIO. SEE ENLARGED PATIO PLAN ON SHEET A014 FOR ADDITIONAL INFORMATION
- 2.4 ACCESSIBLE STALL WITH BOLLARD MOUNTED ACCESSIBLE SIGNAGE & RAILING. SEE CIVIL DRAWINGS FOR ADDITIONAL INFORMATION.
- 2.5 6" CONCRETE PIPE BOLLARD. SEE SHEET A014 FOR ADDITIONAL INFORMATION
- 2.6 PARKING STRIPING. SEE CIVIL DRAWINGS FOR ADDITIONAL INFORMATION
- 2.7 NOT USED
- 2.8 4" CONCRETE PIPE BOLLARD. SEE SHEET A014 FOR ADDITIONAL INFORMATION
- 3.0 FIRE DEPARTMENT CONNECTION. REFER TO CIVIL DRAWINGS FOR ADDITIONAL INFORMATION
- 3.1 PROPOSED LANDSCAPE AREA. SEE LANDSCAPE DRAWINGS FOR ADDITIONAL INFORMATION
- 3.2 PROPOSED CONCRETE SIDEWALKS (MEDIUM BROOM FINISH, CONTROL JOINTS PER PLAN, EXPANSION JOINTS @ 20'-0" MAX). SEE CIVIL DRAWINGS FOR ADDITIONAL INFORMATION
- 3.3 HEAVY DUTY CONCRETE PAD. SEE CIVIL DRAWINGS FOR ADDITIONAL INFORMATION
- 3.4 G.C. TO PROVIDE LEVEL LANDING WITH A 2% (1:50) MAX SLOPE ALL DIRECTIONS.
- 3.5 G.C. TO PROVIDE MAX. THRESHOLD HEIGHT OF 1/2"
- 3.6 PROPOSED ACCESSIBLE RAMP. SEE CIVIL DRAWINGS FOR ADDITIONAL INFORMATION
- 3.7 PROPOSED DRIVE-THRU SIGNAGE, PROVIDED BY PANERA, INSTALLED BY G.C. SEE SHEET A013 FOR ADDITIONAL INFORMATION.
- 4.0 DETECTABLE TRUNCATED DOMES ON RAMP WHERE INDICATED. SEE CIVIL DRAWINGS FOR ADDITIONAL INFORMATION
- 4.1 PROPOSED VEHICULAR TRAFFIC FLOW STRIPING. SEE CIVIL DRAWINGS FOR ADDITIONAL INFORMATION
- 4.2 ELECTRICAL TRANSFORMER ON CONCRETE PAD. SEE ELECTRICAL DRAWINGS FOR ADDITIONAL INFORMATION
- 4.3 PROPOSED POST MOUNTED "RAPID PICK-UP" SIGN. SEE SHEET A014 & SIGNAGE SHOP DRAWINGS FOR ADDITIONAL INFORMATION
- 4.4 PROPOSED GREASE INTERCEPTOR. SEE CIVIL AND PLUMBING DRAWINGS FOR ADDITIONAL INFORMATION.
- 4.5 PROPOSED PEDESTRIAN CROSSWALK STRIPING. SEE CIVIL DRAWINGS FOR ADDITIONAL INFORMATION.
- 4.6 SERVICE RAMP; REFER TO CIVIL DRAWINGS FOR ADDITIONAL INFORMATION
- 4.7 PIPE RAILING, REFER TO SHEET A011 FOR ADDITIONAL INFORMATION
- 4.8 NOT USED
- 5.0 NOT USED
- 5.1 EXISTING RETAINING WALL TO BE RAISED TO GRADE (REFER TO STRUCTURAL/CIVIL DRAWINGS)
- 6.0 LANDSCAPE SCREENING TO SHIELD PATIO FROM DRIVE-THRU TRAFFIC, REFER TO LANDSCAPE PLANS FOR ADDITIONAL INFORMATION
- 6.1 PARKING LOT LIGHTING, REFER TO ELECTRICAL SITE PLAN FOR ADDITIONAL INFORMATION/SPECIFICATIONS
- 6.2 AMERISTAR "ECHOLON II" MAJESTIC STYLE WITH INTEGRATED BOLLARDS 36" RAILING SYSTEM. G.C. TO PROVIDE AND INSTALL - SEE DETAIL 6 [THIS SHEET]

**GENERAL NOTES:**

- 1. ALL WORK SHALL COMPLY WITH THE REGULATION AND ORDINANCES OF THE CITY OF AURORA, IL AND ANY OTHER APPLICABLE CODES.
- 2. THE G.C. SHALL NOTIFY THE OWNER/ARCHITECT OF ANY INTERRUPTIONS/DELAYS IN UTILITY SERVICES.
- 3. OWNER/GC SHALL NOTIFY ARCHITECT AND/OR CIVIL ENGINEER OF ANY DEVIATION(S) FROM PLAN.
- 4. THE GENERAL CONTRACTOR SHALL CONTACT LOCAL UTILITIES TO VERIFY ALL SIZES, LOCATIONS, AND CONNECTION POINTS FOR ALL UTILITIES AFFECTED.
- 5. ANY CONNECTIONS, DISCONNECTIONS, AND INSTALLATIONS TO LOCAL UTILITIES SHALL BE MADE IN ACCORDANCE WITH APPLICABLE CODES.
- 6. EXTERIOR BUILDING SIGN FURNISHED & INSTALLED BY OWNER VENDOR. G.C. TO PROVIDE POWER & BLOCKING AS REQ'D.
- 7. PROVIDE CONTINUOUS CURB CUTS AND SMOOTH PAVEMENT & CURB TRANSITIONS BETWEEN NEW AND EXISTING CONDITIONS AS REQUIRED FOR SITEWORK AS INDICATED.
- 8. PAINT STRIPING COLOR TO BE VERIFIED BY INSPECTOR PRIOR TO WORK.

Bakery-Cafe:  
**#0777**  
 Project Team:  
**FREDERICK J. GOGLIA**  
 ARCHITECT, NCARB, RDI  
 1950 CRAIG ROAD, SUITE 300 ST. LOUIS, MO 63146  
 PH. (314) 415-2400 FAX (314) 415-2300 www.orev.com

PERMIT/BID SET  
**Bakery Cafe #0777**  
 491 ILLINOIS ROUTE 59  
 AURORA, IL 60504

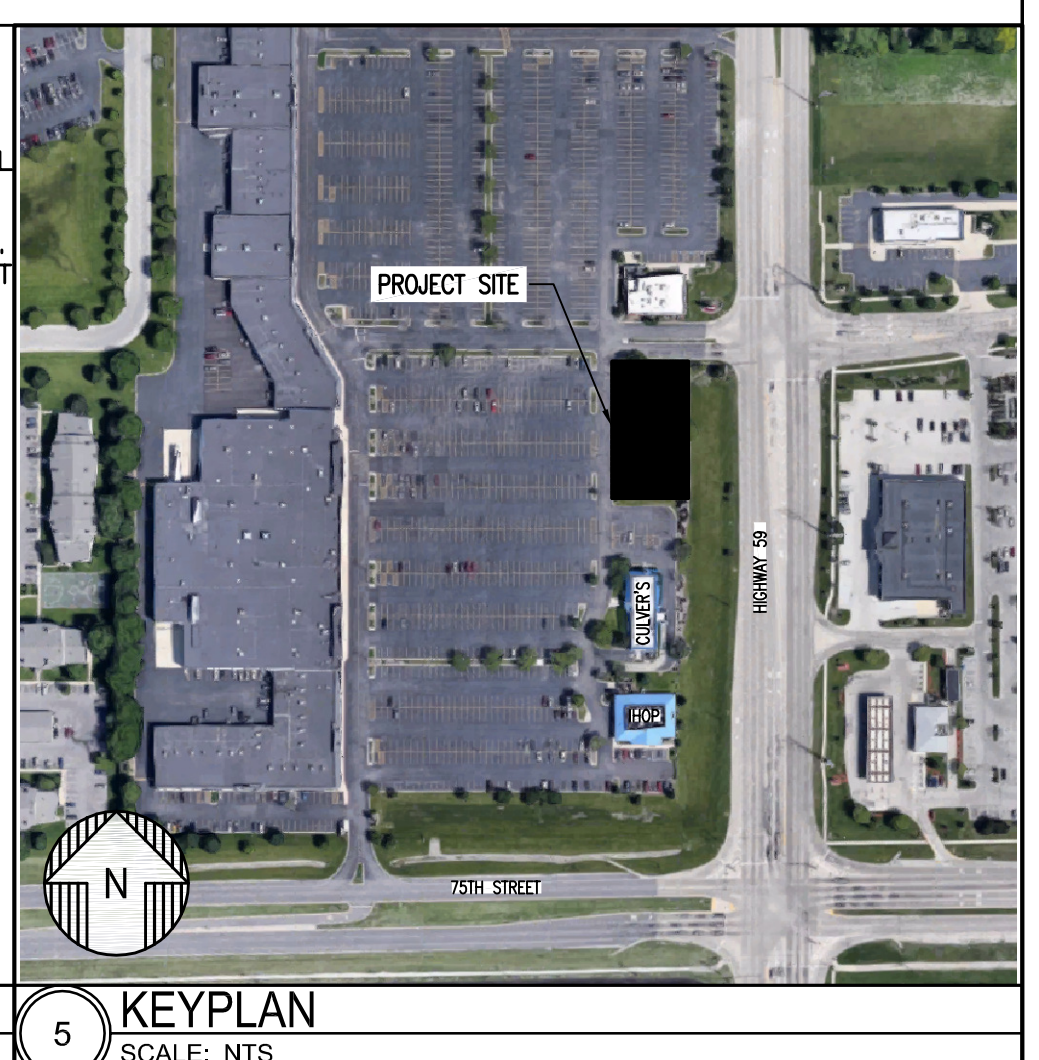
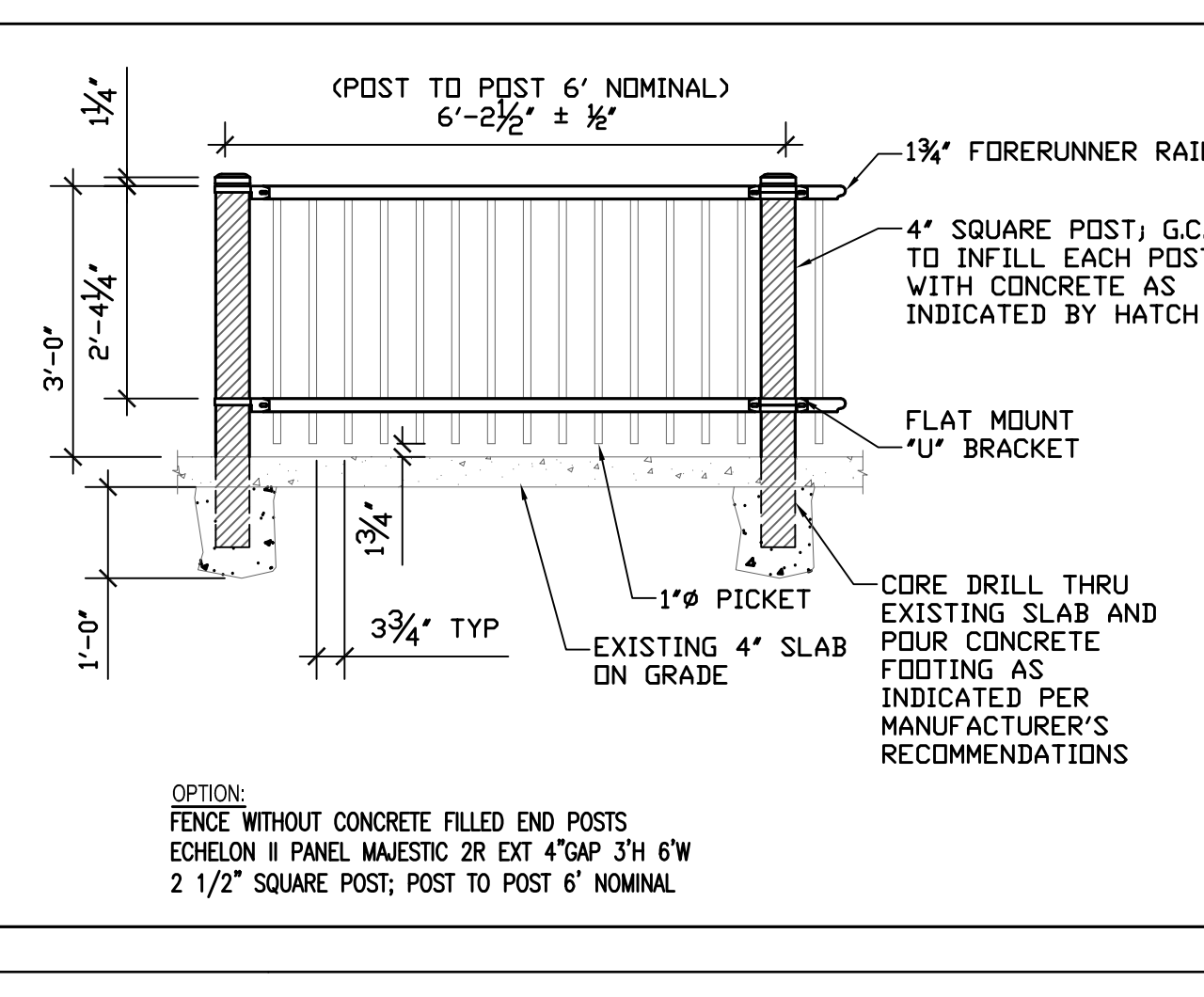
**SPECIFICATIONS:**  
 AMERISTAR FENCING  
 ECHOLON II PANEL MAJESTIC 2R EXT 4"GAP 3"H 6"W  
 1-888-333-3422

**\*\*NOTE:** WHEN USING SWIVEL BRACKETS ON EITHER OR BOTH ENDS OF A PANEL INSTALLATION, CARE MUST BE TAKEN TO ENSURE THE SPACING BETWEEN POST AND ADJOINING PICKETS MEETS APPLICABLE CODES. THIS MAY REQUIRE TRIMMING ONE OR BOTH ENDS OF THE PANEL AS NEEDED.

**POST NOTE:** IN LOCATIONS SUBJECT TO FREEZING, WHERE POSTS ARE GROUTED INTO CORE-DRILLED HOLES, A 1/4" DIAMETER HOLE SHOULD BE DRILLED IN THE POST APPROXIMATELY 1/2" ABOVE ELEVATION TO ALLOW FOR DRAINAGE OF BUILT-UP GROUND WATER. THE DRILLED HOLE MUST BE WIPED CLEAN AND DRY AND SPRAYED WITH AMERISTAR ZINC RICH PRIMER AND AMERISTAR COLOR MATCH FINISH.

**FROST LINE:** FOOTER DEPTH SHOWN IS MINIMUM RECOMMENDATION. IN SOME CASES LOCAL RESTRICTIONS OF FREEZING WEATHER CONDITIONS MAY REQUIRE A GREATER DEPTH.

**\*PANEL RAKING:** DRAWING SHOWS FENCE PANEL AT LEVEL GROUND ELEVATION. FOR INSTALLATIONS THAT MUST BE RAKED TO FOLLOW SLOPING GRADES, THE POST SPACING DIMENSION SHOWN MUST BE MEASURED ALONG THE GRADE.



**6 RAILING DETAIL**  
 SCALE: 1/2"=1'-0"

**5 KEYPLAN**  
 SCALE: NTS

No.	Description	Date
1	CITY/OWNER COMMENTS	08.29.16

**ARCHITECTURAL SITE PLAN**

Project Number: \_\_\_\_\_ Sheet Number: \_\_\_\_\_  
 160132  
 Drawn By: \_\_\_\_\_  
 MH\_CAO  
 Issue Date: \_\_\_\_\_  
**08.29.2016**  
 DPM: \_\_\_\_\_ DM: \_\_\_\_\_ CPM: \_\_\_\_\_  
 BRIAN B. DAN C. KEVIN C.

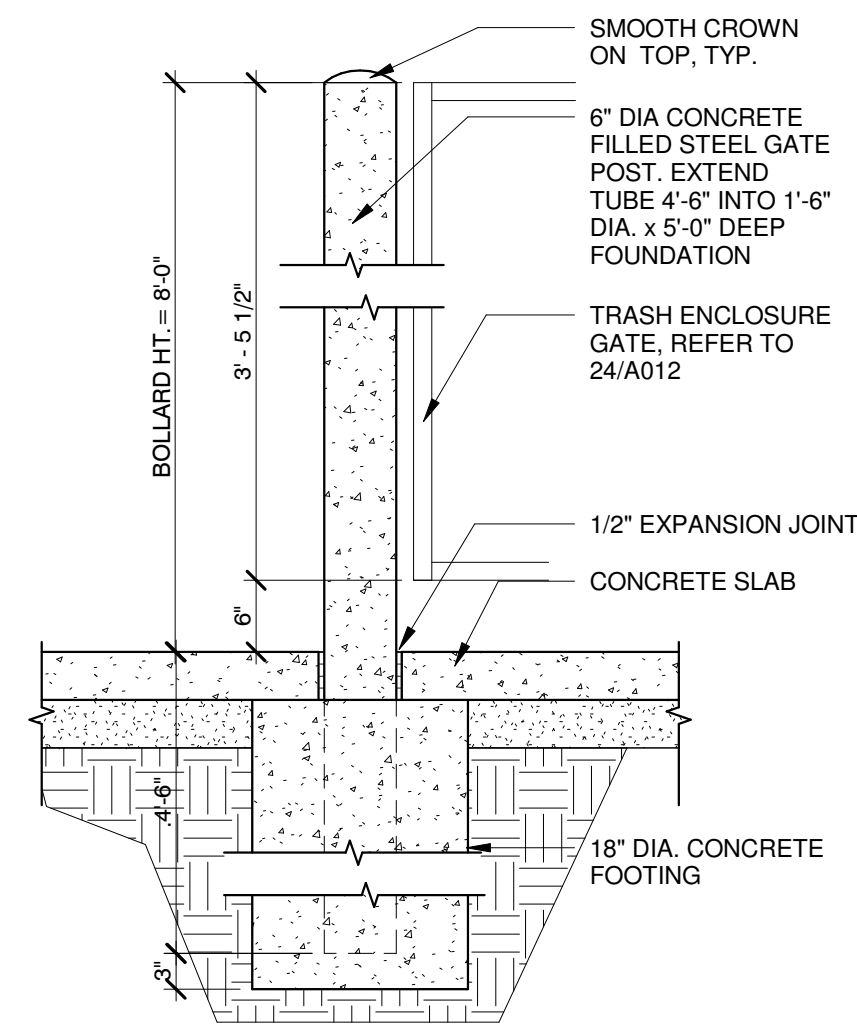
**A001**



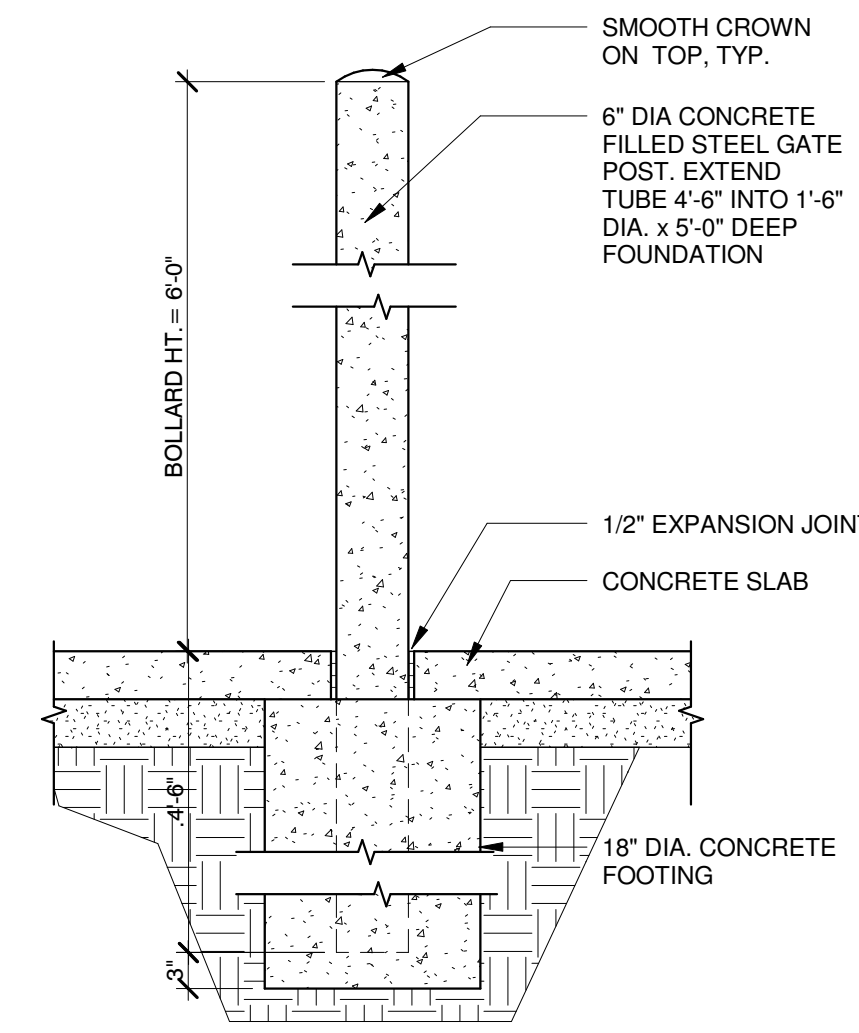
No.	Description	Date

## TRASH ENCLOSURE DETAILS

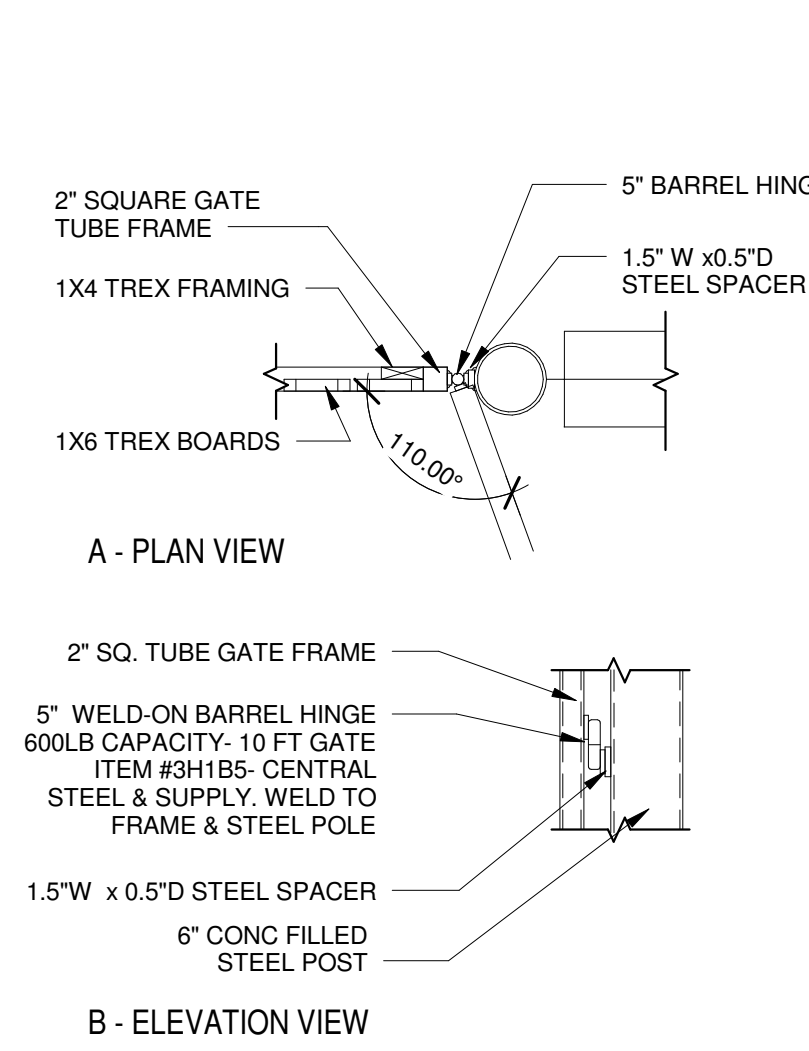
Project Number:	Sheet Number:
160132	A012
Drawn By:	MH, CAO
Issue Date:	08.29.2016
DPM:	DM:
BRIAN B.	DAN C.
CPM:	KEVIN C.



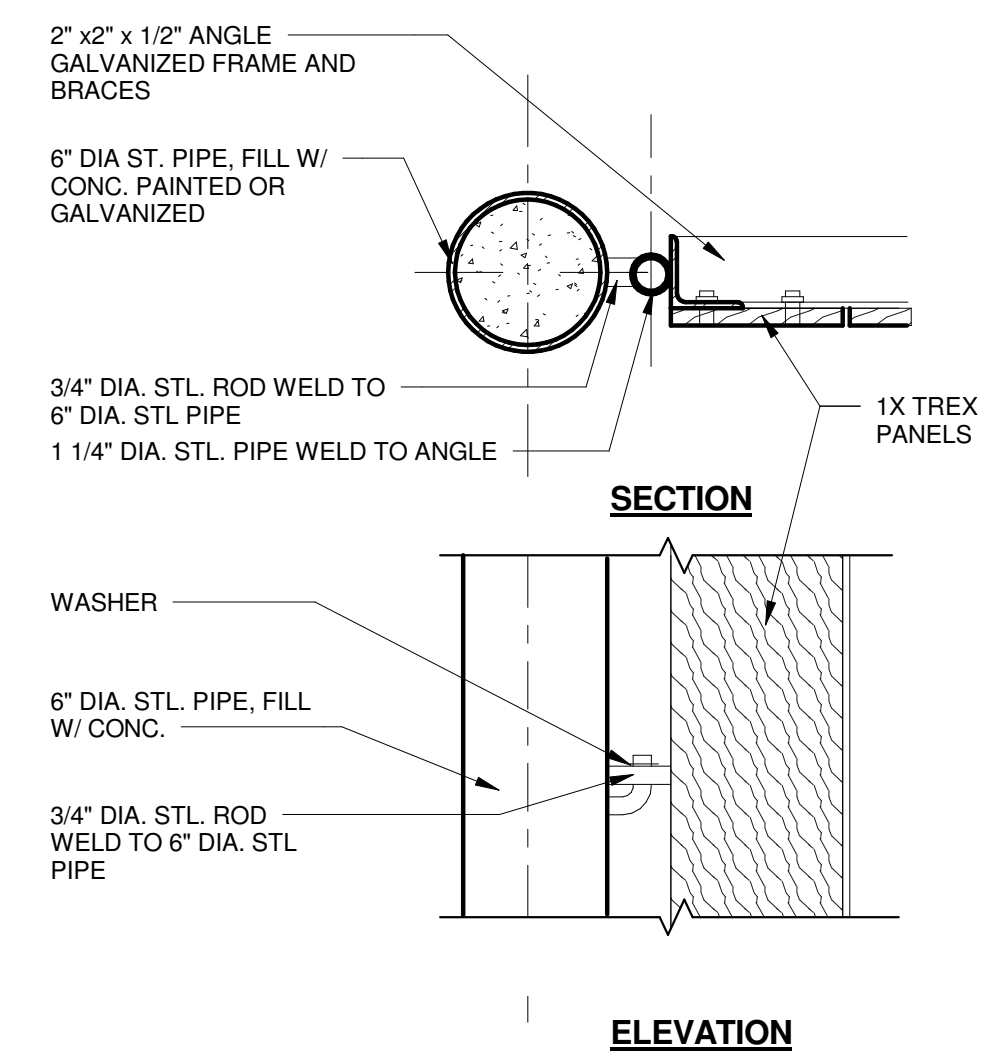
**13 GATE POST DETAIL**  
3/4" = 1'-0"



**9 DUMPSTER BOLLARD DETAIL**  
3/4" = 1'-0"



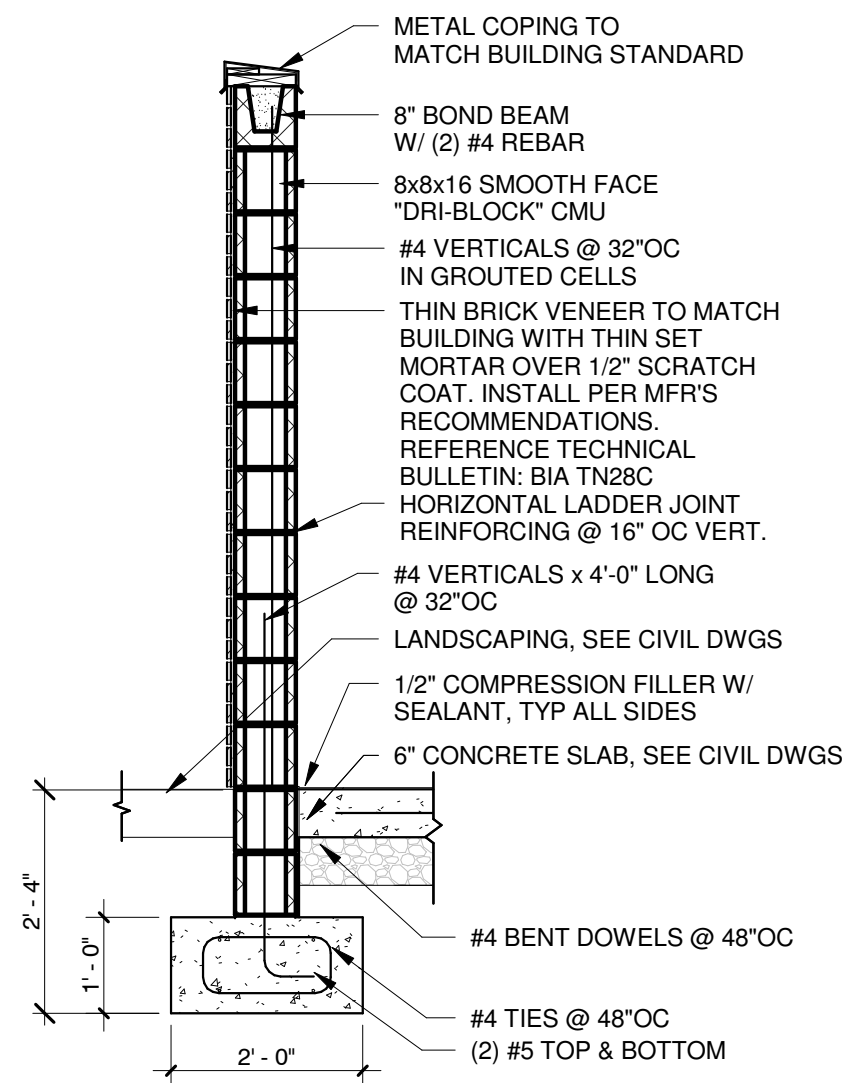
**5 TRASH ENCLOSURE GATE HINGE**  
3/4" = 1'-0"



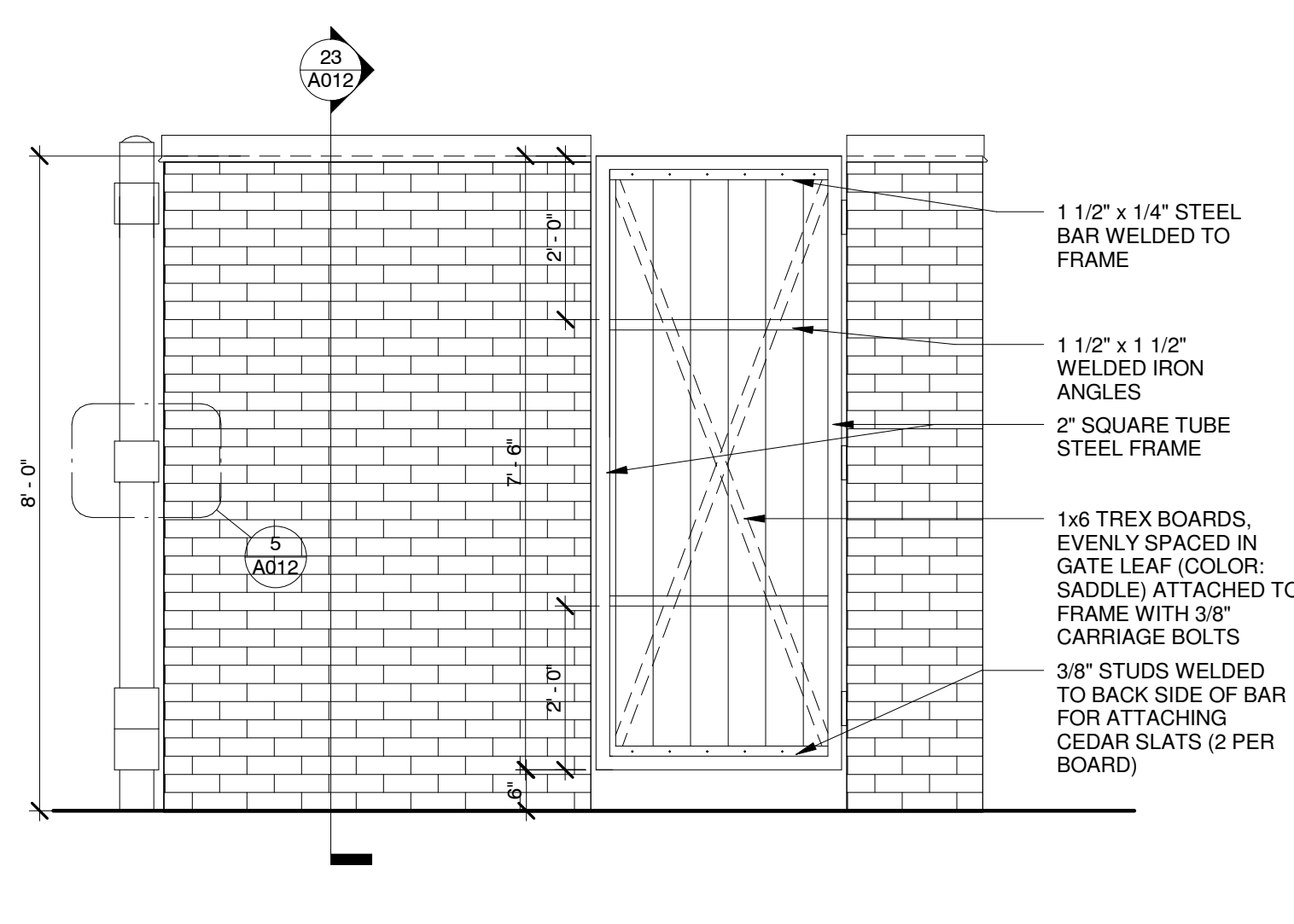
**1 TRASH ENCLOSURE DETAIL**  
1 1/2" = 1'-0"

NOTE: PAINT ALL EXPOSED METAL P107 - #2134-20 MIDSUMMER NIGHT

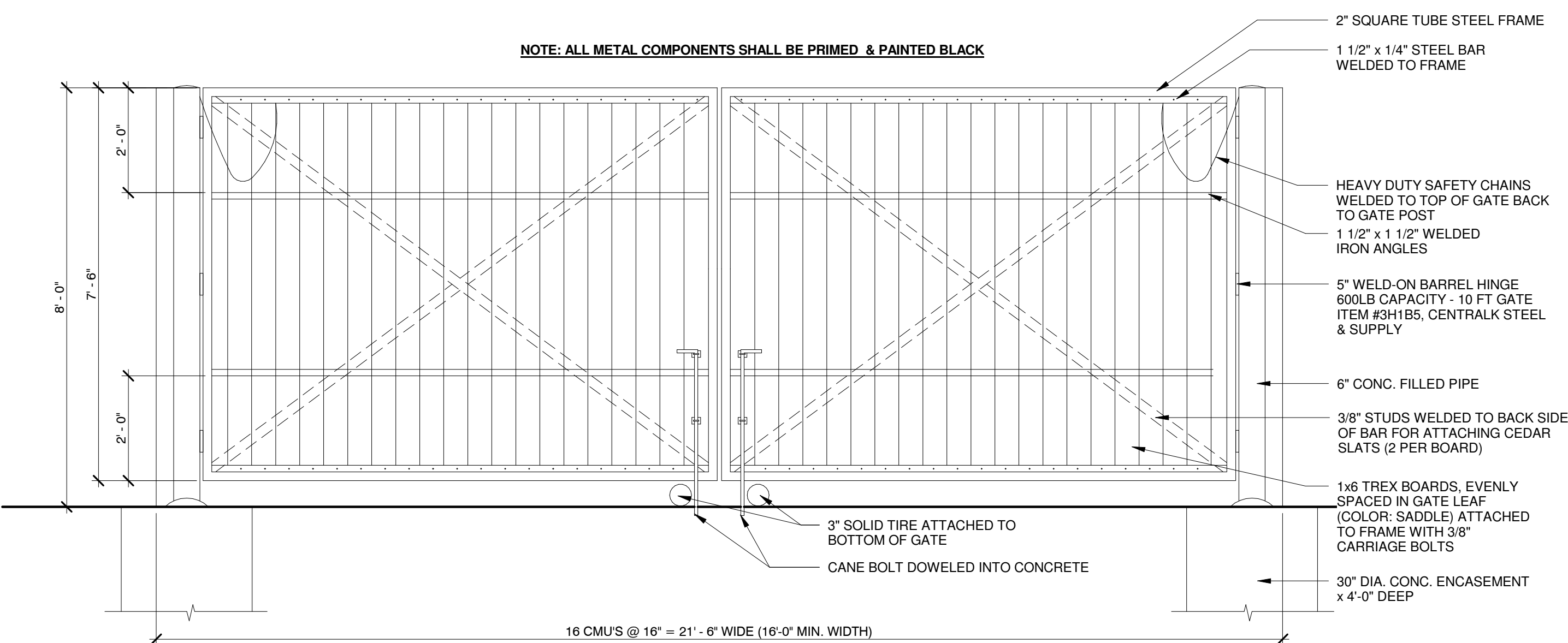
NOTE: DUMPSTER ENCLOSURES AND RELATED DETAILS ARE INCLUDED ON THIS SHEET FOR REFERENCE ONLY. FINAL DESIGN CRITERIA AND CONSTRUCTION DETAILS ARE TO BE PER CIVIL DRAWINGS. SAID CIVIL DRAWINGS TO COMPLY WITH ALL REQUIREMENTS OF THE WASTE DISPOSAL SERVICE THAT WILL SERVICE THIS SITE, I.E. TRUCK TURNING RADIUS, APPROACH CLEARANCES, MANUEVERING REQUIREMENTS, SITE ACCESS, ETC.



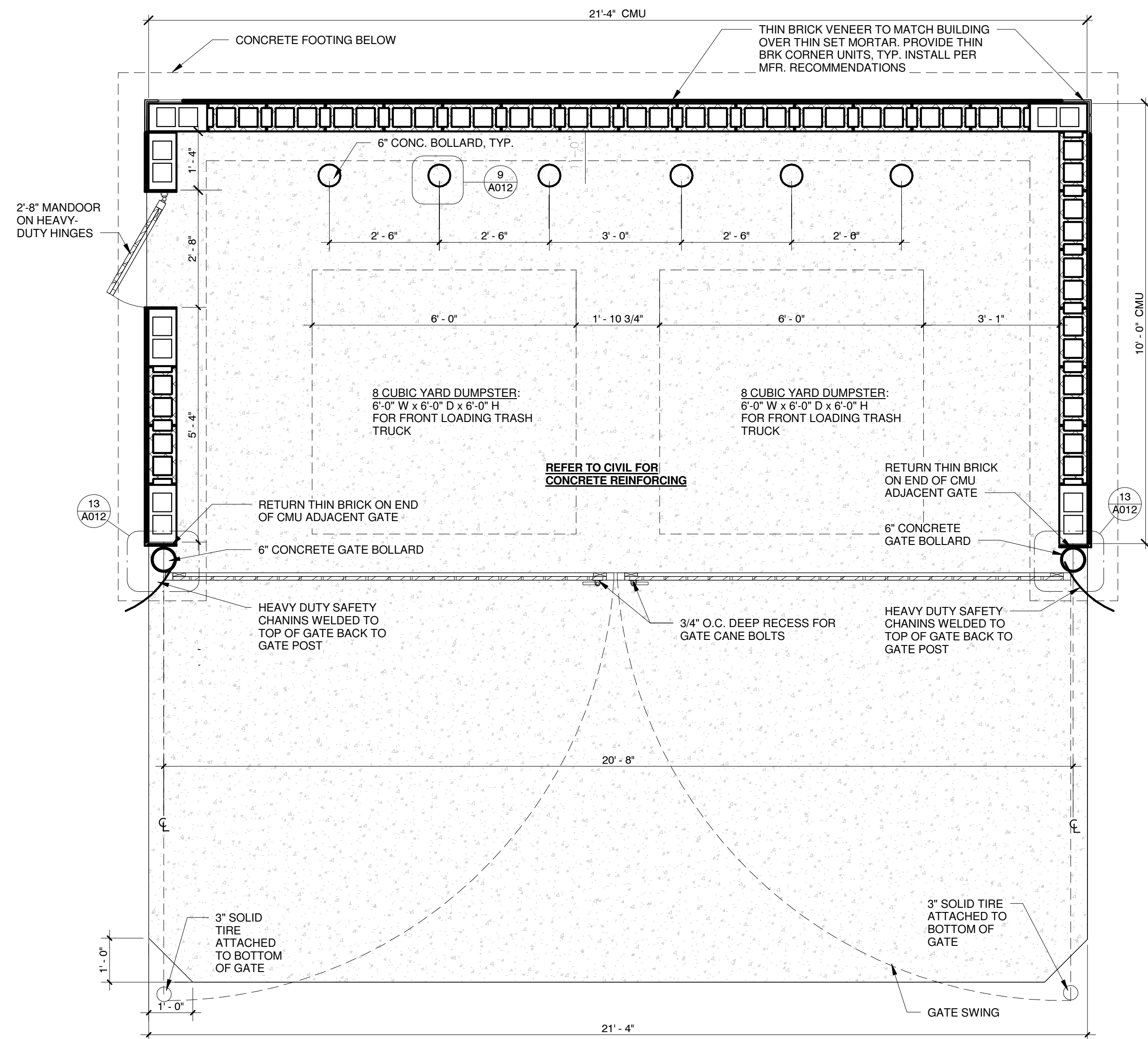
**23 TRASH & RECYCLE ENCLOSURE SECTION**  
1/2" = 1'-0"



**15 TRASH & RECYCLING ENCLOSURE SIDE**  
1/2" = 1'-0"



**24 TRASH & RECYCLE ENCLOSURE ELEVATION FOR FRONT LOADING TRUCK**  
1/2" = 1'-0"



**12 PLAN @ TRASH & RECYCLE ENCLOSURE FOR FRONT LOADING TRUCK**  
1/2" = 1'-0"

NOTE: COORDINATE CLEARANCE AND DUMPSTER SIZES WITH LOCAL TRASH COMPANY

**Bakery Cafe #0777**  
491 ILLINOIS ROUTE 59  
AURORA, IL 60504

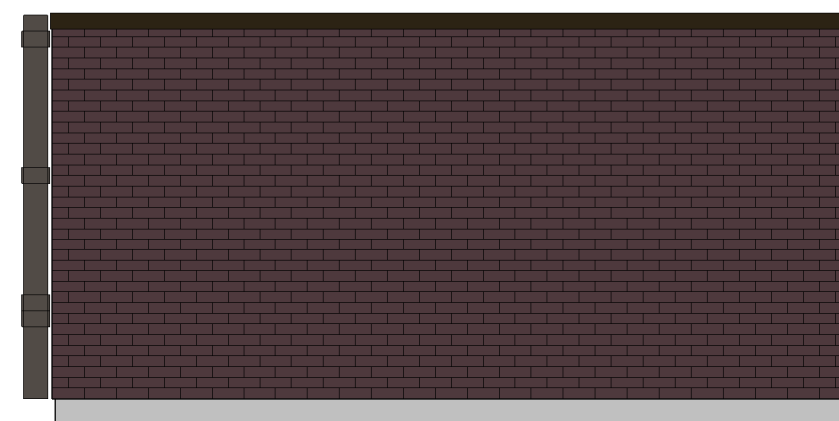
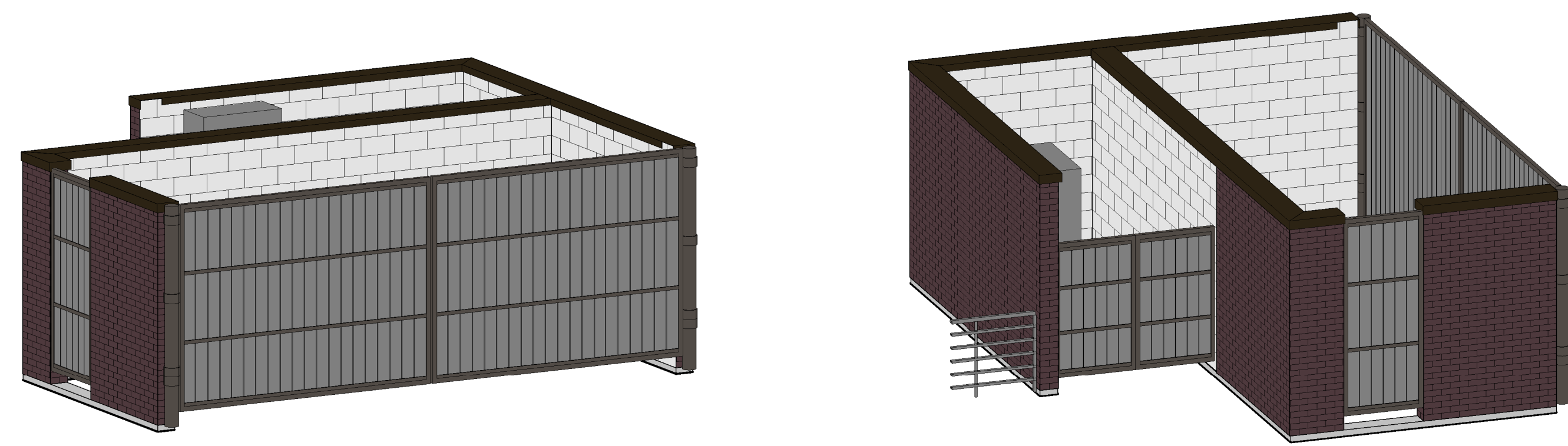


Consultant Copyright Placeholder

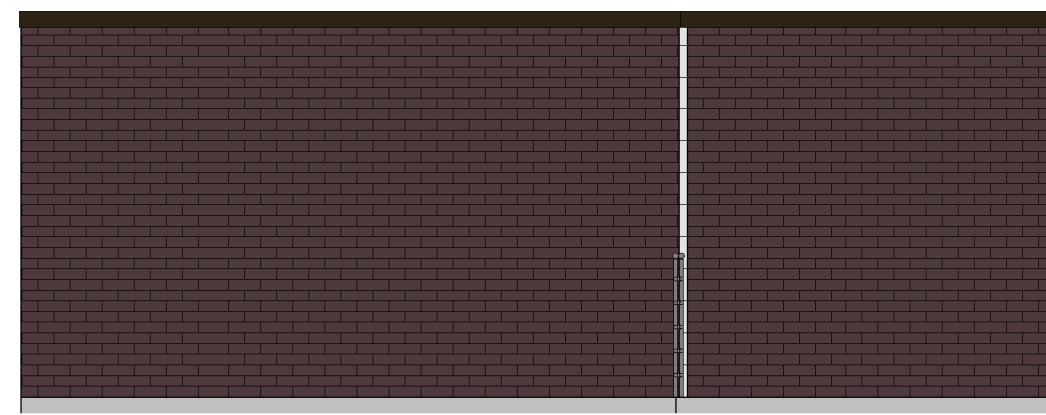
No.	Description	Date

### TRASH ENCLOSURE DETAILS

Project Number: 160132 Sheet Number: **A012A**  
 Drawn By: \_\_\_\_\_  
 Author: \_\_\_\_\_  
 Issue Date: 08.29.2016  
 DPM: BRIAN B. DM: DAN C. CPM: KEVIN C.



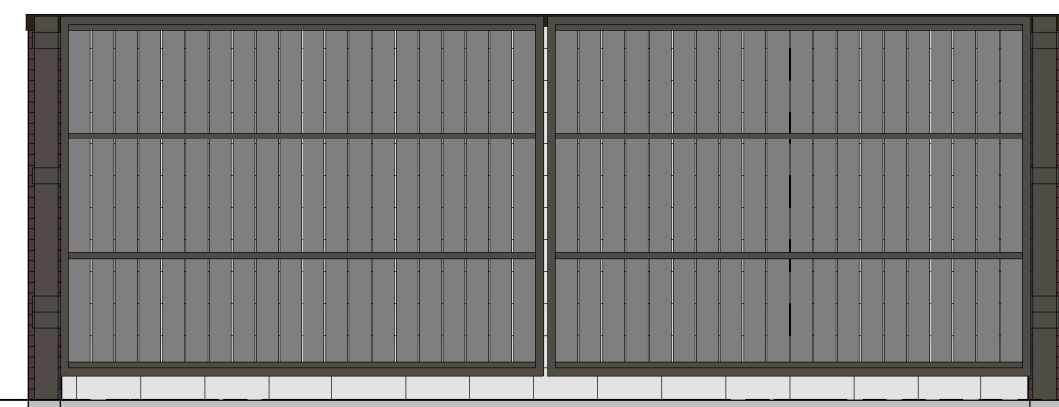
1 Elevation 1 - a  
1/4" = 1'-0"



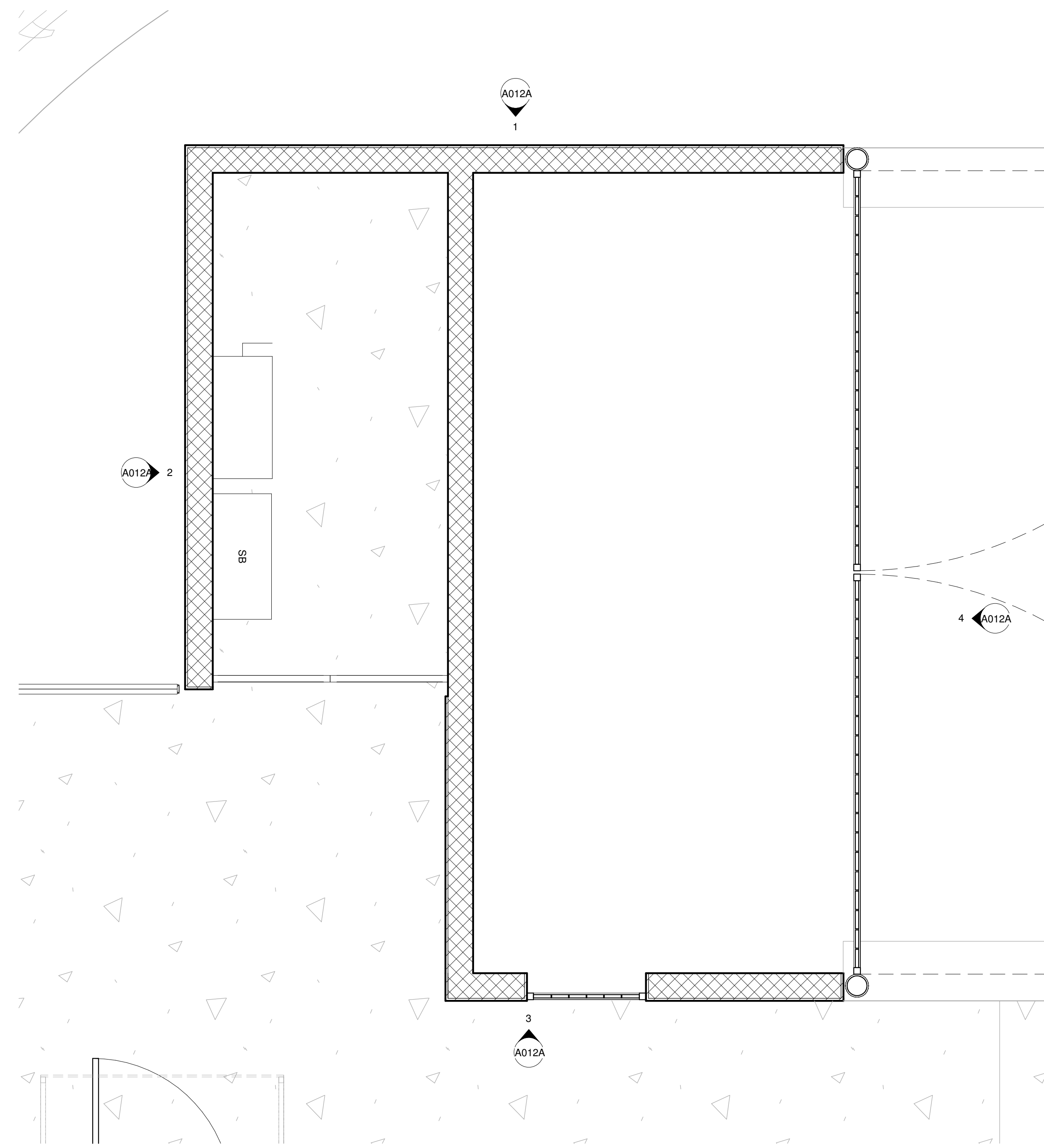
2 Elevation 2 - a  
1/4" = 1'-0"



3 Elevation 3 - a  
1/4" = 1'-0"



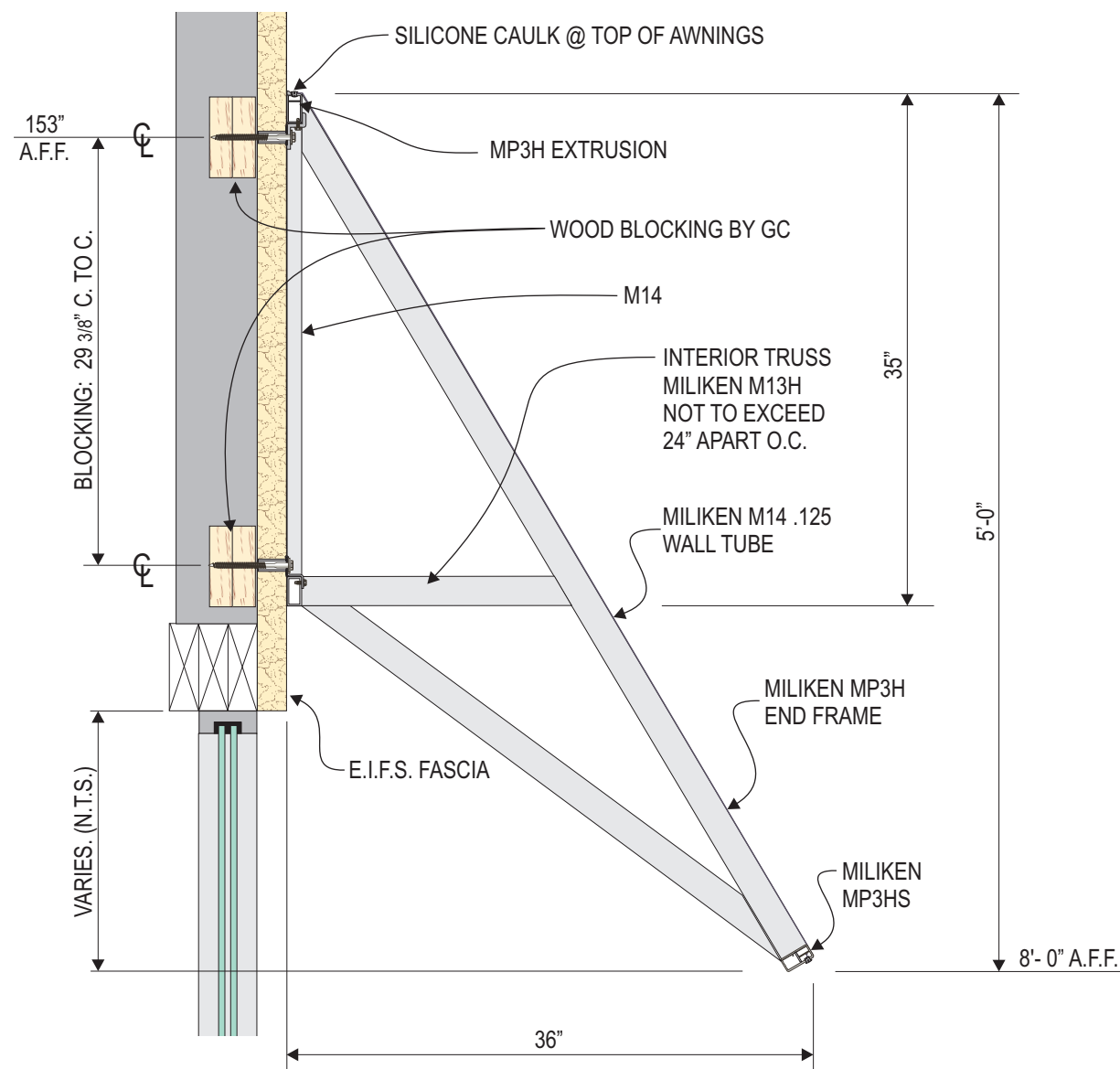
4 Elevation 4 - a  
1/4" = 1'-0"



5 Trash Enclosure  
1/2" = 1'-0"

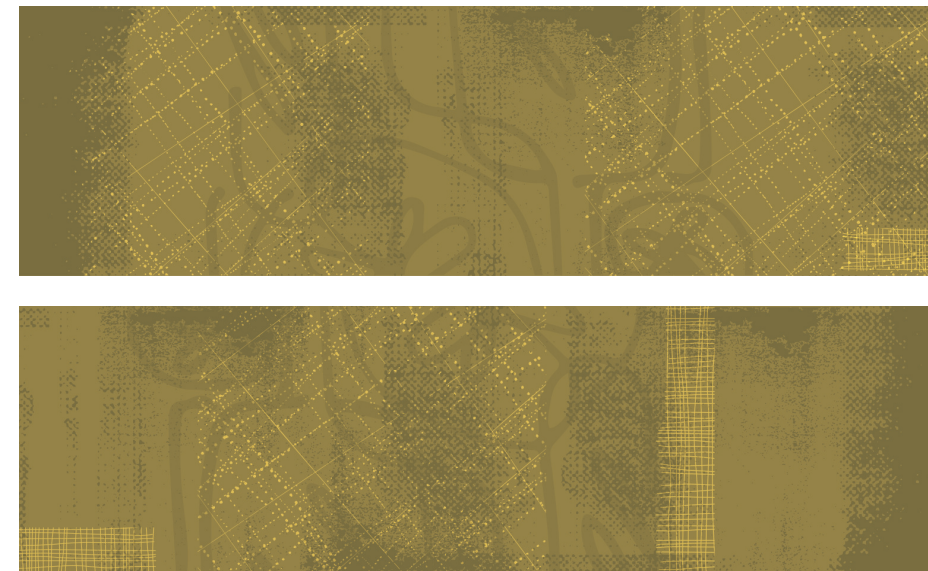
**ALUMINUM FRAMED G-3 STOREFRONT AWNINGS:**

- 1" x 2" ALUMINUM EXTRUSION WELDED FRAME
- FRAME POWDER COATED SEIBERT SILVER #189110
- TRUSS SPACING N.T.E. 36" APART O.C.
- DIGITALLY PRINTED "MAINSTREET" FABRIC COVER
- OPEN SOFFIT, OPEN ENDS, BACK OF FABRIC IS WHITE
- GRAY PVC TRIM STAPLE COVER
- MOUNTED USING Z-CLIPS & APPROPRIATE ANCHORS
- G.C. TO PROVIDE BLOCKING IF NEEDED



AWNING FRAME SECTION: 1" = 1'-0"

Engineering design required for 115 MPH wind speed & 35lb per sq.ft. snow load



TYPICAL G3 "OLIVE" COVER DESIGNS:  $\pm 3/8" = 1'-0"$   
 LENGTHS & SECTIONS USED VARY - SEE BLDG. ELEVATION DRAWINGS



**MANDEVILLE SIGN**  
 making your mark.

676 GEORGE WASHINGTON HIGHWAY  
 LINCOLN, RI 02865-4255

401-334-9100 401-334-7799  
 PHONE FAX

WEB [www.mandevillesign.com](http://www.mandevillesign.com)

**APPROVALS**

Signatures Required Before Release to Production

Engineering	
BY	DATE
Sales	
BY	DATE
Estimating	
BY	DATE
Production	
BY	DATE
Quality Control	
BY	DATE

PDF NAME

**REVISIONS**

NO.	BY	DESCRIPTION	DATE
1	XX	xxxxxxxxxxx	00/00/00
2			
3			
4			
5			
6			
7			
8			
9			
10			

All electrical signs shall comply with the National Electric Code (Article 600) and be manufactured according to Underwriters Laboratories U.L. 48 standards and labeled accordingly.

**PANERA  
 BREAD  
 DRIVE THRU**

CUSTOMER

STORE NUMBER **777**

491 South Route 59  
 AURORA, IL

LOCATION

PROJECT MANAGER **JIM M.**

WD 03/22/16  
 ARTIST DATE

**28209.6**

DRAWING NAME

**APPROVALS**  
*Signatures Required Before Release to Production*

<b>Engineering</b>	
BY	DATE
<b>Sales</b>	
BY	DATE
<b>Estimating</b>	
BY	DATE
<b>Production</b>	
BY	DATE
<b>Quality Control</b>	
BY	DATE

PDF NAME

**REVISIONS**

NO.	BY	DESCRIPTION	DATE
1	WD	monument sign moved	04/18/16
2	JM	added property line	09/07/16
3			
4			
5			
6			
7			
8			
9			
10			

All electrical signs shall comply with the National Electric Code (Article 600) and be manufactured according to Underwriters Laboratories U.L. 48 standards and labeled accordingly.



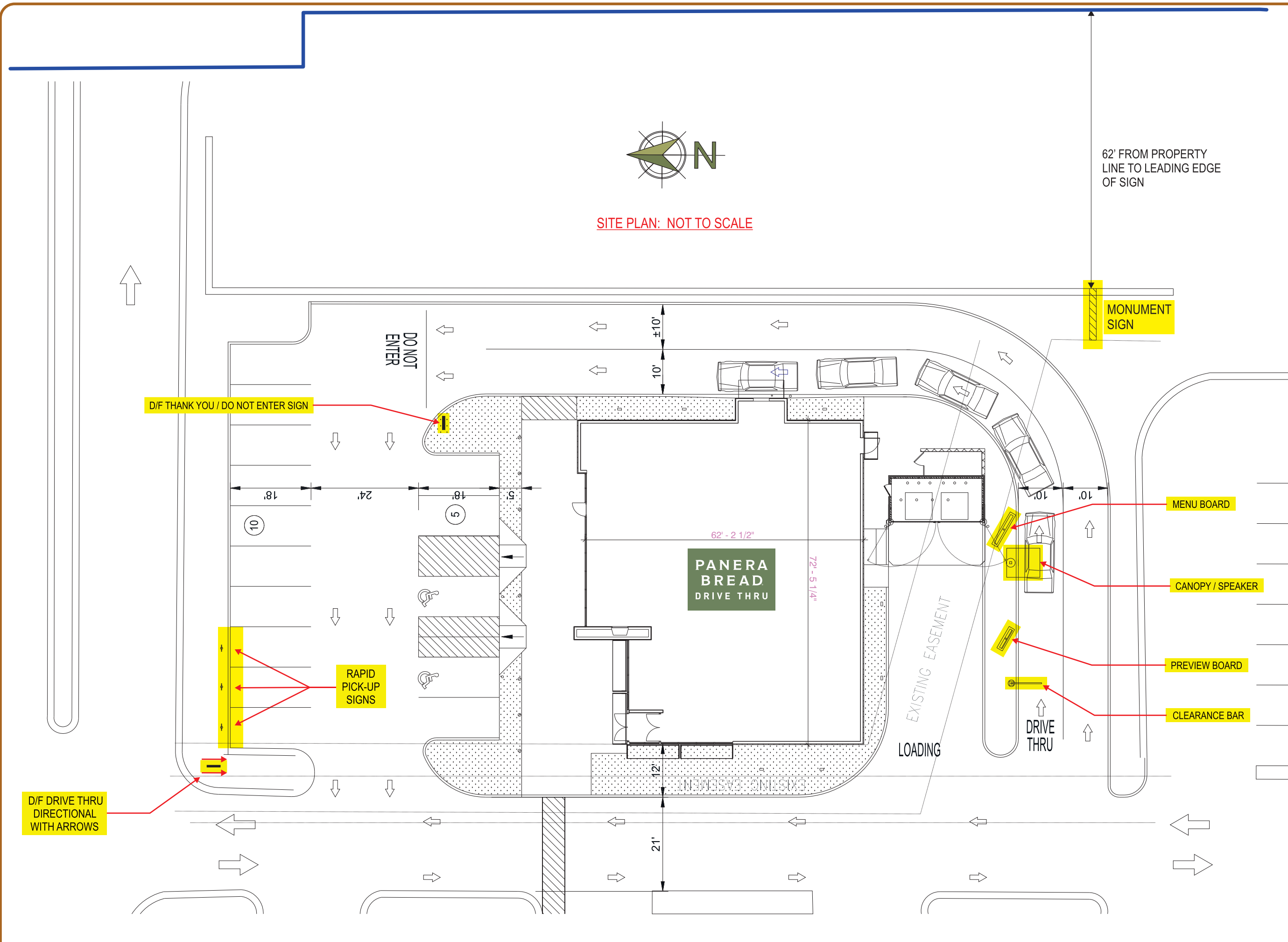
CUSTOMER  
 STORE NUMBER **777**

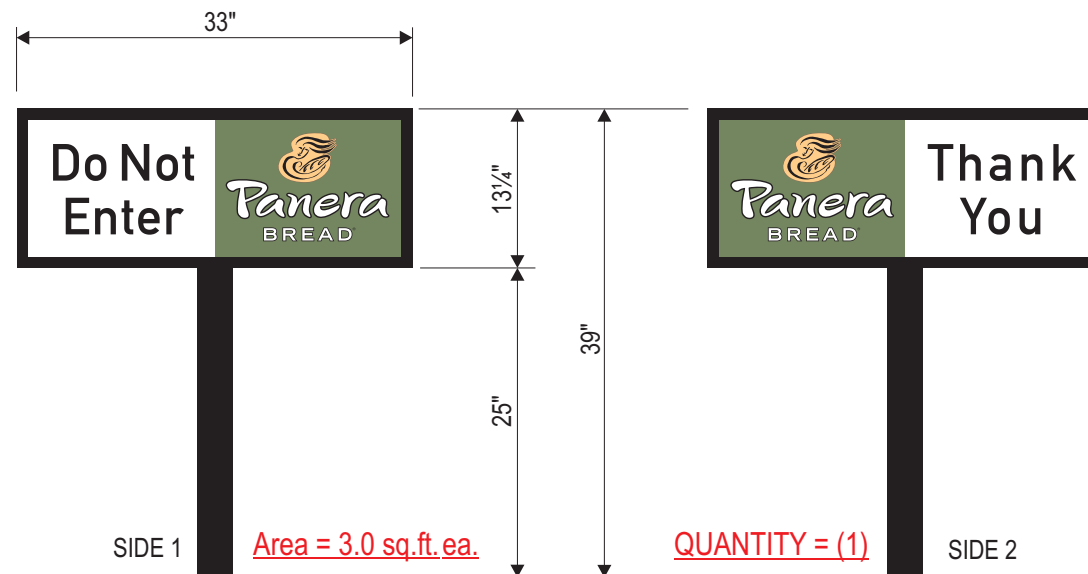
LOCATION  
**491 South Route 59  
 AURORA, IL**

PROJECT MANAGER  
**JIM M.**

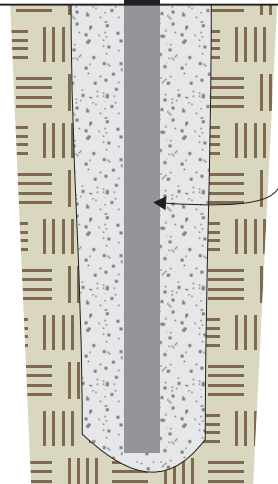
WD	03/22/16
ARTIST	DATE

DRAWING NAME  
**28209.7**



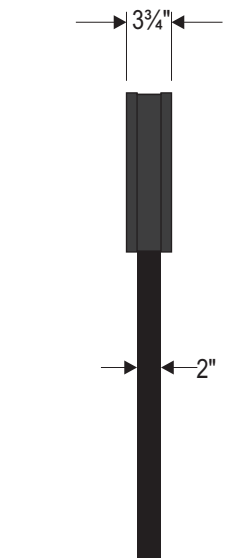


D/F SPLIT-FACE DIRECTIONAL SIGN w/ LOGO



DIRECT BURIAL IN  
FREE-FORMED  
CONCRETE FOOTING

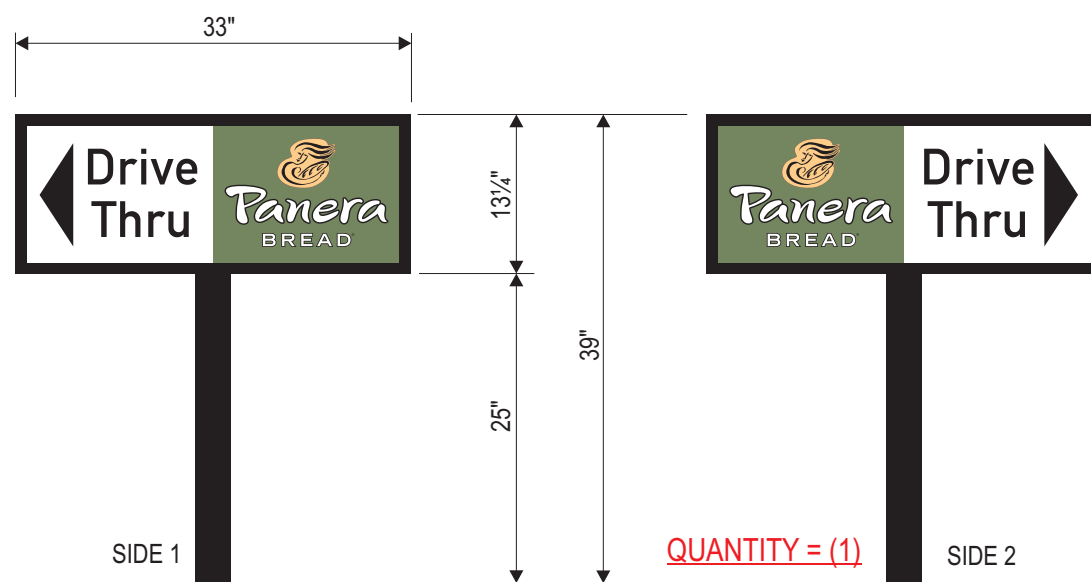
DIRECTIONAL SIGNS  
3/4" = 1'-0"



END VIEW  
3/4" = 1'-0"

INTERNALLY ILLUMINATED DIRECTIONAL SIGNS:

- (BLACK) PAINTED 3 3/4" DEEP .063 ALUM. RETURNS & 1" ALUM. RETAINERS
- CLEAR POLYCARBONATE SIGN FACES
- DIGITALLY PRINTED VINYL GRAPHICS APPLIED TO 2ND SURFACE:
  - OPAQUE PMS 5757u GREEN BACKGROUND,
  - WHITE Panera Bread w/ BLACK OUTLINES
  - PANTONE 1355 PEACH LOGO w/ BLACK DETAILS
  - BLACK MESSAGE COPY & ARROWS IF REQUIRED
- HIGH OUTPUT FLUORESCENT ILLUMINATION
- ELECTRICAL REQUIREMENTS = .5 AMP EA. @ 120 VOLTS
- (BLACK) 2" DEEP X 3" WIDE X 1/4" WALL ALUMINUM TUBE POSTS
- (BLACK) PAINTED FINISHED .080 ALUM. BACKS ON SINGLE FACE SIGNS
- DIRECT BURIAL IN FREE-FORMED CONCRETE FOOTING



D/F SPLIT-FACE DIRECTIONAL SIGN w/ LOGO

SIGN CODE ALLOWANCE:  
Logos allowed.  
Not to exceed 3 sq.ft.  
Not to exceed 4' in height

CODE COMPLIANT

ARTWORK EXCLUSIVE PROPERTY OF  
SINCE 1917

MANDEVILLE SIGN  
making your mark.

676 GEORGE WASHINGTON HIGHWAY  
LINCOLN, RI 02865-4255

401-334-9100 401-334-7799  
PHONE FAX

WEB www.mandevillesign.com

**APPROVALS**  
*Signatures Required Before Release to Production*

Engineering	BY	DATE
Sales	BY	DATE
Estimating	BY	DATE
Production	BY	DATE
Quality Control	BY	DATE

PDF NAME

**REVISIONS**

NO.	BY	DESCRIPTION	DATE
1	XX	xxxxxxxxxxx	00/00/00
2			
3			
4			
5			
6			
7			
8			
9			
10			

All electrical signs shall comply with the National Electric Code (Article 600) and be manufactured according to Underwriters Laboratories U.L. 48 standards and labeled accordingly.

CUSTOMER

STORE NUMBER 777

491 South Route 59  
AURORA, IL

LOCATION

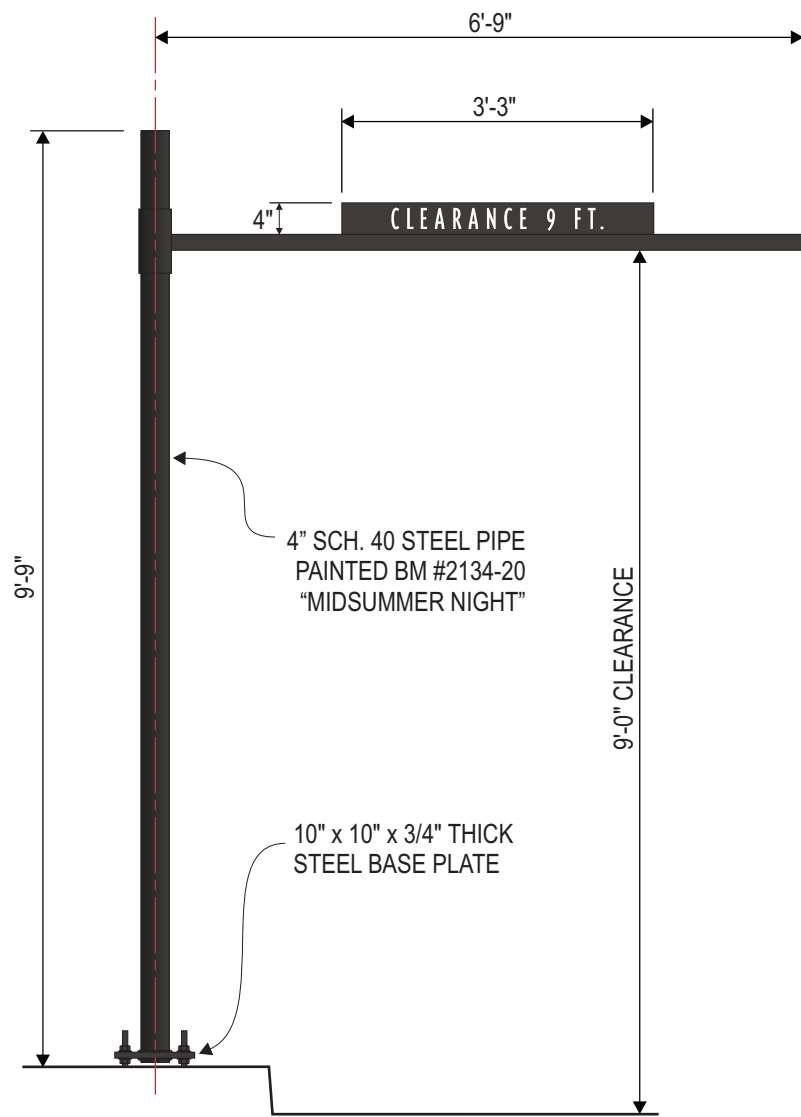
PROJECT MANAGER JIM M.

WD	03/22/16
ARTIST	DATE

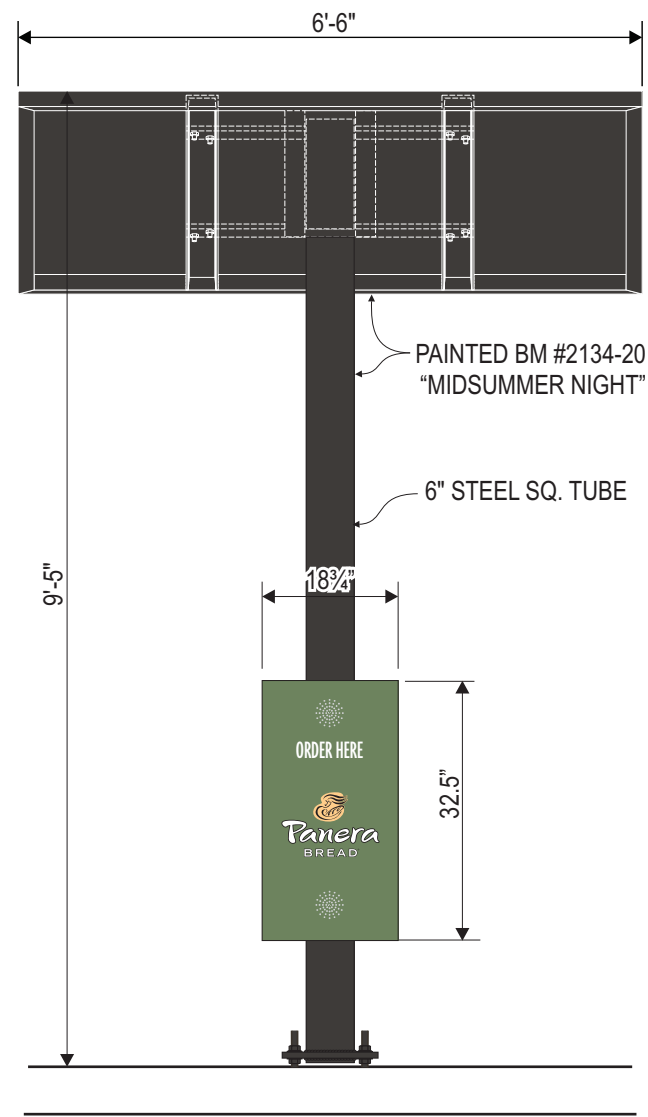
28209.8

DRAWING NAME





**D/T HEIGHT CLEARANCE BAR**  
1/2" = 1'-0"



**D/T CANOPY ELEVATION**  
1/2" = 1'-0"



**PREVIEW BOARD ELEVATION**  
1/2" = 1'-0" 21.97 sq.ft.



**MENU BOARD ELEVATION**  
1/2" = 1'-0" 34.98 sq.ft.



676 GEORGE WASHINGTON HIGHWAY  
LINCOLN, RI 02865-4255

401-334-9100 401-334-7799  
PHONE FAX

WEB www.mandevillesign.com

**APPROVALS**  
Signatures Required Before Release to Production

Engineering	BY	DATE
Sales	BY	DATE
Estimating	BY	DATE
Production	BY	DATE
Quality Control	BY	DATE

PDF NAME

**REVISIONS**

NO.	BY	DESCRIPTION	DATE
1	XX	XXXXXXXXXXXX	00/00/00
2			
3			
4			
5			
6			
7			
8			
9			
10			

All electrical signs shall comply with the National Electric Code (Article 600) and be manufactured according to Underwriters Laboratories U.L. 48 standards and labeled accordingly.



CUSTOMER

STORE NUMBER 777

491 South Route 59  
AURORA, IL

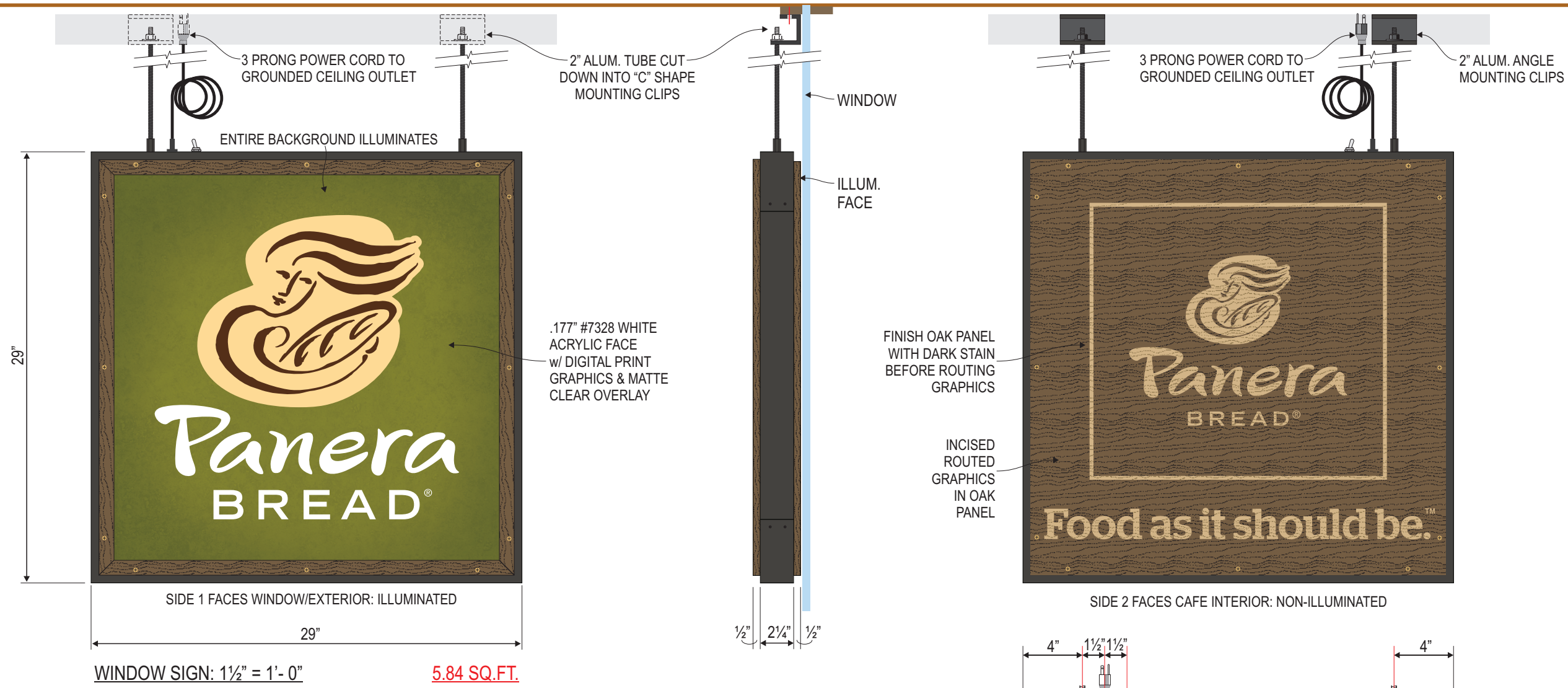
LOCATION

PROJECT MANAGER JIM M.

WD 03/22/16  
ARTIST DATE

28209.9

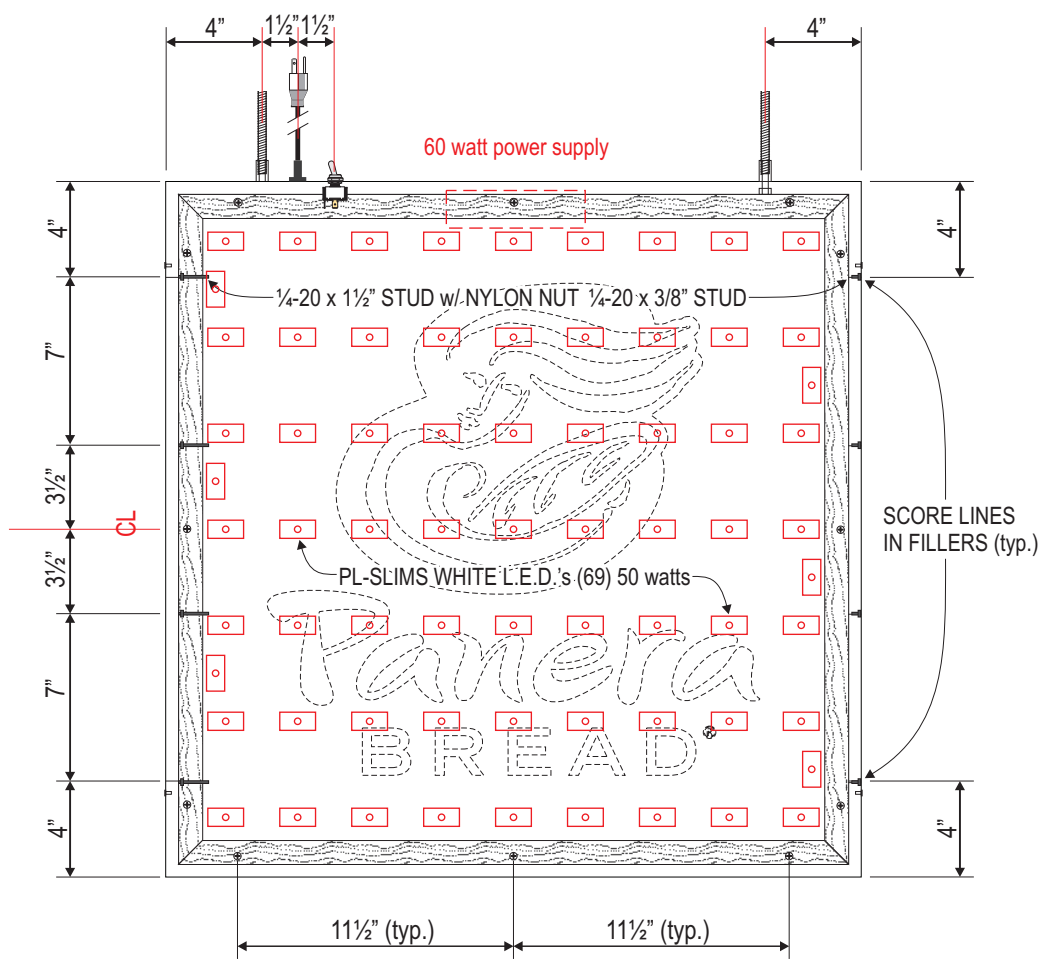
DRAWING NAME



WINDOW SIGN: 1 1/2" = 1'-0" 5.84 SQ.FT.

29" X 29" X 3/4" DEEP D/F INTERIOR ILLUMINATED HANGING WINDOW SIGN WITH ILLUMINATED FACE & OPAQUE REMOVABLE BACK.

- 1/2" thick White Oak, Stained and Sealed, Wooden Face Trim secured to Flange in Face Side of Frame with Flat Head Brass Machine Screws.
- .177" #7328 White Acrylic Face with 1st Surface Digital Print and Matte Clear Over Laminate.
- BACK FACE SPECS:
- 1/2" thick White Oak, Stained and Sealed, Engraved Wood Back secured to Flange in Frame with Flat Head Brass Machine Screws, Removable.
- 2 1/4" x 1 1/4" (finished O.D.) x 1/8" Brake Formed Aluminum Channel Frame.
- End Fillers to receive a "Scribe" on the Fillers and Wrapping the Flanges 4" in from Each End.
- Install (2) 1/8" Aluminum Rivets 1/2" in from Scribe Line and 1" C/C.
- (2) 1/4-20 x 7/8" Long ZP Nut Couplings out Top for Installation.
- (1) 18 AWG x 6'-7" Long NEMA 5-15 Power Cord out Top. Disconnect Switch on Top.
- PL-Slim White LED Illumination
- (1) Self Contained 60 Watt Class 2 Power Supply: 120 VAC / 1.2 Amp.
- Paint Inside of Sign ZAP White.
- Paint Outside of Sign, Mounting Clips & Hardware MP29527 Midsummer Night in Satin Finish.
- Supply Bottle of Touchup Paint and (2) 1/4-20 x 6' Long Black Oxide Threaded Rods for Installation.



ARTWORK EXCLUSIVE PROPERTY OF  
**SINCE**  **1917**  
**MANDEVILLE SIGN**  
*making your mark.*  
 676 GEORGE WASHINGTON HIGHWAY  
 LINCOLN, RI 02865-4255  
 401-334-9100 401-334-7799  
 PHONE FAX  
 www.mandevillesign.com  
 WEB

**APPROVALS**  
*Signatures Required Before Release to Production*


Engineering	BY	DATE
Sales	BY	DATE
Estimating	BY	DATE
Production	BY	DATE
Quality Control	BY	DATE

PDF NAME

**REVISIONS**

NO.	BY	DESCRIPTION	DATE
1	WD	update sign details	04/18/16
2			
3			
4			
5			
6			
7			
8			
9			
10			

All electrical signs shall comply with the National Electric Code (Article 600) and be manufactured according to Underwriters Laboratories U.L. 48 standards and labeled accordingly.



CUSTOMER

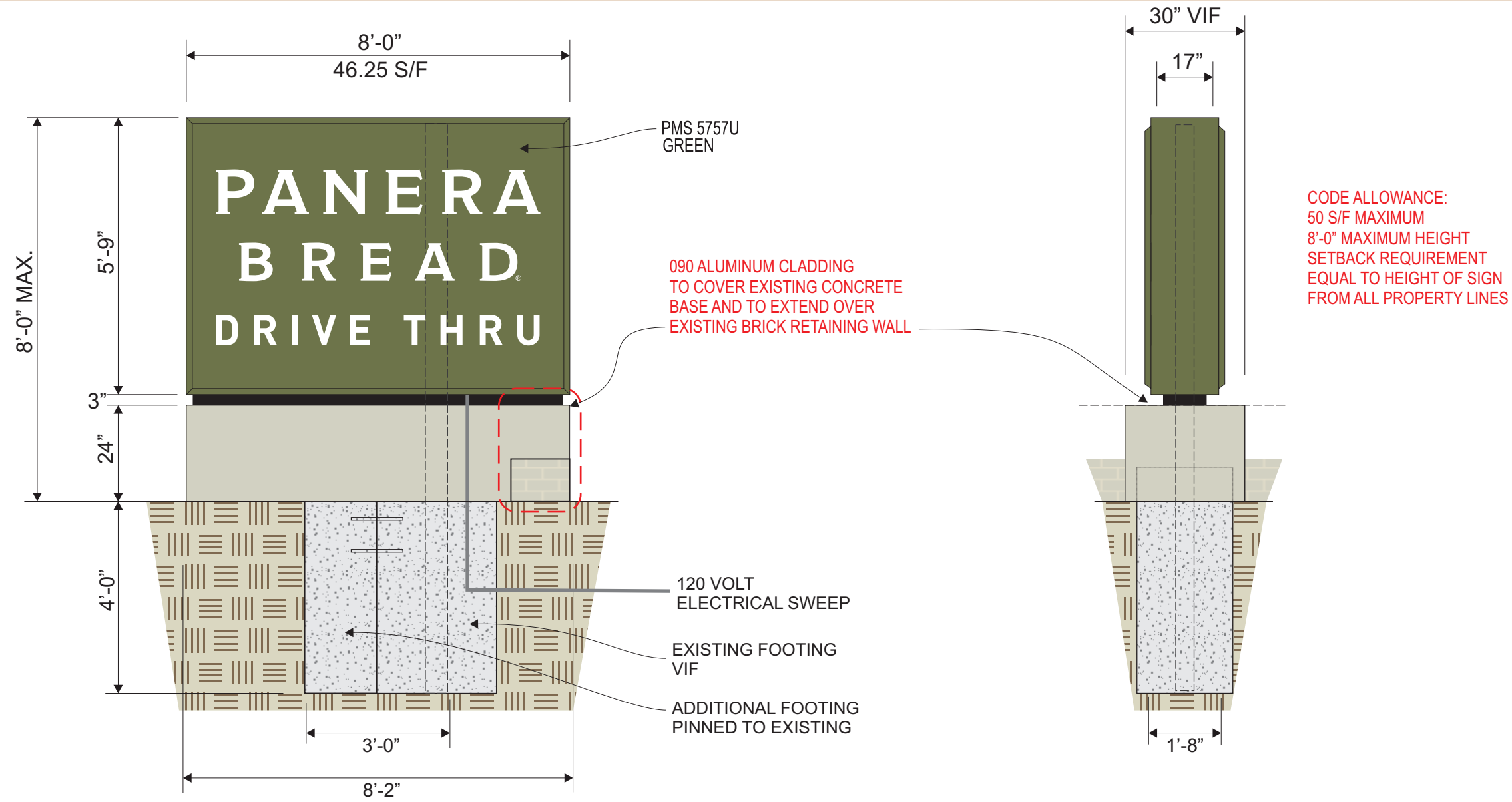
STORE NUMBER **777**

LOCATION **491 South Route 59 AURORA, IL**

PROJECT MANAGER **JIM M.**

ARTIST **WD** DATE **03/22/16**

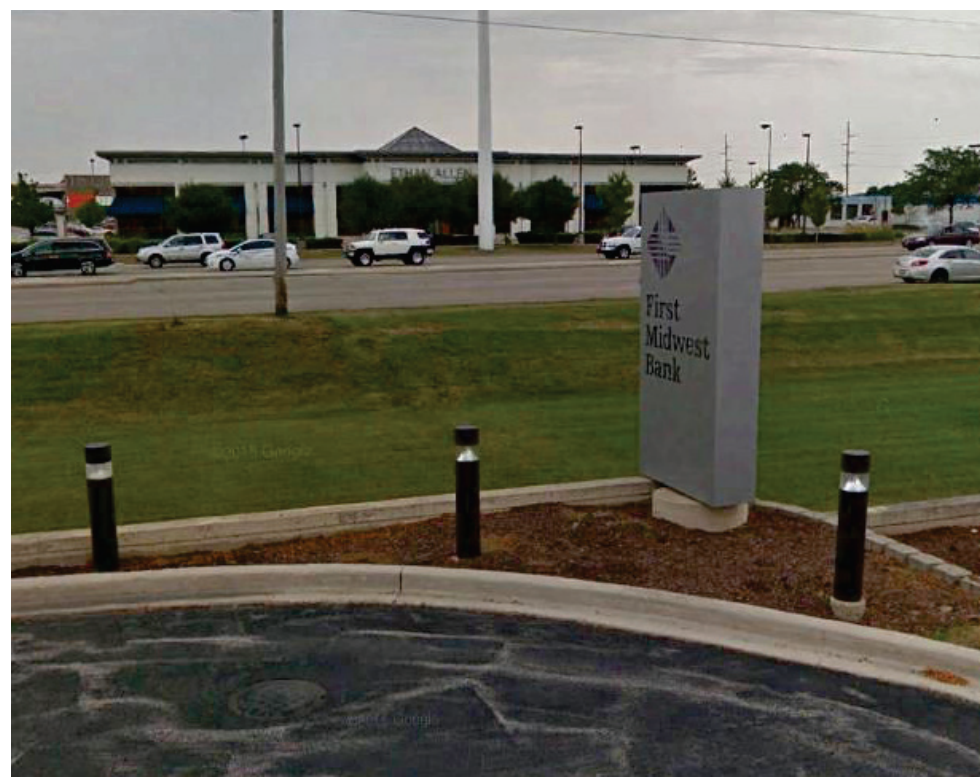
DRAWING NAME **28209.10**



CODE ALLOWANCE:  
 50 S/F MAXIMUM  
 8'-0" MAXIMUM HEIGHT  
 SETBACK REQUIREMENT  
 EQUAL TO HEIGHT OF SIGN  
 FROM ALL PROPERTY LINES

SCALE: 3/8"=1'-0"

- NEW D/F ILLUMINATED MONUMENT SIGN:
- (PMS 5757U) PAINTED ALUMINUM FABRICATED SIGN BOX & RETAINERS
  - CLEAR POLYCARBONATE FACES PAN FORMED EMBOSSED COPY
  - PMS 5757U GREEN OPAQUE BACKGROUND
  - WHITE GRAPHICS
  - (WHITE) VINYL "®" REGISTERED SYMBOL
  - WHITE ILLUMINATION
  - .090 ALUMINUM BASE PAINT COLOR TO BE DETERMINED
  - CONCRETE PAD, FOOTING & STEEL PIPE BY MSI, DETAILS T.B.D.



ARTWORK EXCLUSIVE PROPERTY OF  
 SINCE 1917  
  
**MANDEVILLE SIGN**  
*making your mark.*  
 676 GEORGE WASHINGTON HIGHWAY  
 LINCOLN, RI 02865-4255  
 401-334-9100 401-334-7799  
 PHONE FAX  
 www.mandevillesign.com  
 WEB

**APPROVALS**  
*Signatures Required Before Release to Production*

Engineering	BY	DATE
Sales	BY	DATE
Estimating	BY	DATE
Production	BY	DATE
Quality Control	BY	DATE

PDF NAME

**REVISIONS**

NO.	BY	DESCRIPTION	DATE
1	JM	added monument sign	04/11/16
2	WD	update sign details	04/18/16
3	JM	update sign details	08/01/16
4			
5			
6			
7			
8			
9			
10			

All electrical signs shall comply with the National Electric Code (Article 600) and be manufactured according to Underwriters Laboratories U.L. 48 standards and labeled accordingly.



CUSTOMER

STORE NUMBER **777**

LOCATION  
**491 South Route 59  
 AURORA, IL**

PROJECT MANAGER **JIM M.**  
 ARTIST **WD** DATE **03/22/16**

DRAWING NAME **28209.11**