

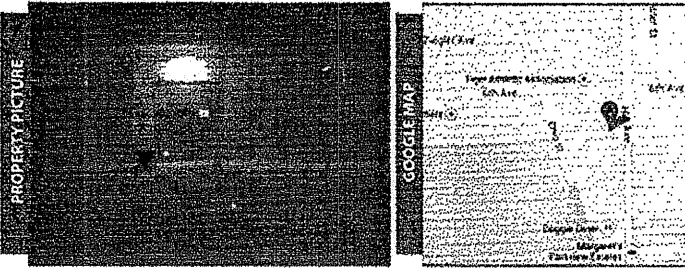


FIELD WORK DATE: 12/5/2014 REVISION DATES: (REV 2 1/7/2015) (REV 2 12/5/2014) (REV 1 11/19/2014)

1411.0345
BOUNDARY SURVEY
KANE COUNTY

PROPERTY ADDRESS: SURVEY NUMBER: 1411.0345

649 HILL AVENUE, AURORA, ILLINOIS 60505 #E2



CLIENT ORDER NUMBER: DATE: 11/19/2014

BUYER: Fidel Balerio

SELLER:

CERTIFIED TO:
FIDEL BALERIO

LEGAL DESCRIPTION:

NONE VISIBLE

POINTS SHOWN:

FEEDBACK INFORMATION:

ADDITIONAL NOTES:

1. The Legal Description used to perform this survey was supplied by others. The survey does not determine or imply ownership.

2. This survey only shows improvements found above ground. Underground footings, utilities and encroachments are not located on this survey map.

3. If there is a septic tank, well or drain field on this survey, the location of such items was shown to us by others and not verified.

4. This survey is exclusively for the use of the parties to whom it is certified.

5. Any additions or deletions to this 2 page survey document are strictly prohibited.

6. Dimensions are in feet and decimals thereof.

7. Due to varying construction standards, house dimensions are approximate.

8. Any FEMA flood zone data contained on this survey is for informational purposes only. Research to obtain such data was performed at www.fema.gov.

9. All pins marked as set are 5/8" diameter, 18" iron rebar.

10. An examination of the abstract of title was not performed by the signing surveyor to determine which instruments, if any, are affecting this property.



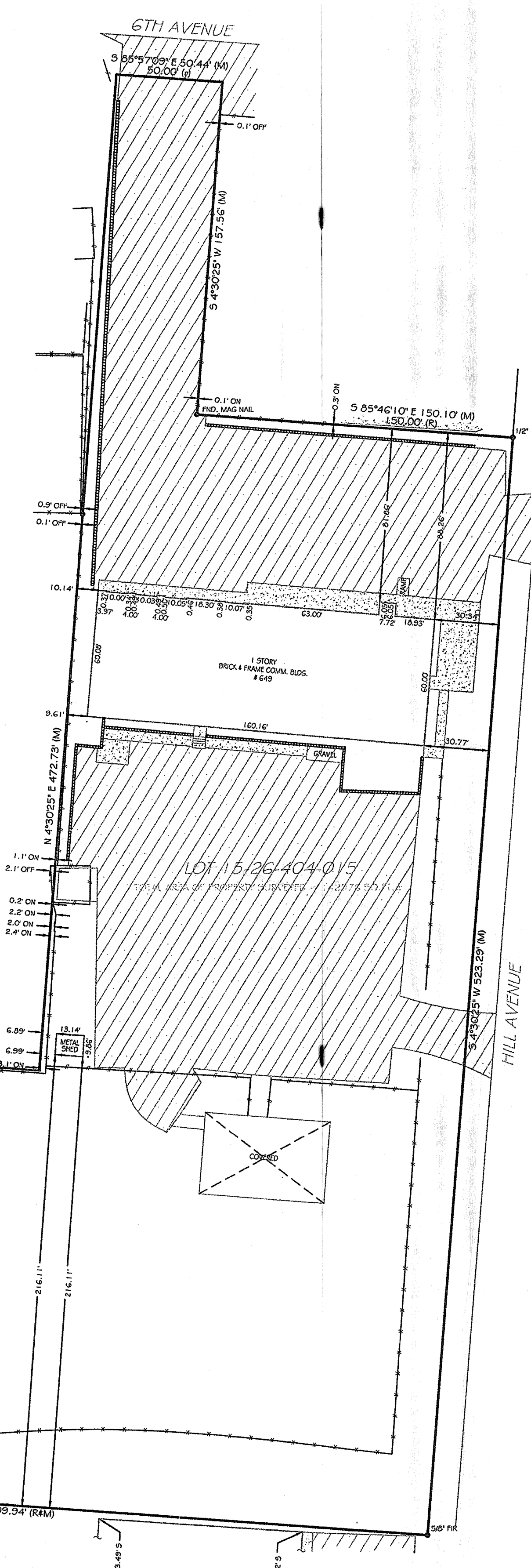
LB# 184005763

EXACTA
ILLINOIS SURVEYORS

Phone 866.735.1916
Fax 866.744.2882
www.exactaillinois.com

1730 Park Street - Suite 204
Naperville, IL 60563

PARCEL ONE: THE EAST 200 FEET OF LOTS 4, 5, 6 AND LOT 15 IN BLOCK 5 IN SUNNYMERE ADDITION TO AURORA, IN THE CITY OF AURORA, KANE COUNTY, ILLINOIS. PARCEL TWO: THAT PART OF THE SOUTH EAST 1/4 OF SECTION 26, TOWNSHIP 38 NORTH, RANGE 8 EAST OF THE THIRD PRINCIPAL MERIDIAN, DESCRIBED AS FOLLOWS: COMMENCING AT THE POINT OF INTERSECTION OF THE SOUTH LINE OF SUNNYMERE ADDITION, AURORA, KANE COUNTY, ILLINOIS, AND THE WEST LINE OF HILL AVENUE AS ESTABLISHED IN DOCUMENT 233568; THENCE SOUTH 00 DEGREES, 41 MINUTES, 20 SECONDS EAST ALONG SAID WEST LINE 183.0 FEET FOR A POINT OF BEGINNING; THENCE SOUTH 88 DEGREES, 51 MINUTES, 0 SECONDS WEST PARALLEL WITH SAID SOUTH LINE 371.70 FEET TO THE CENTER LINE OF OHIO STREET; THENCE SOUTH 19 DEGREES, 00 MINUTES, 0 SECONDS EAST ALONG SAID CENTER LINE 196.61 FEET TO THE NORTHWEST CORNER OF A TRACT OF LAND REFERRED TO AS PARCEL ONE CONVEYED BY DOCUMENT 1606268; THENCE NORTH 88 DEGREES, 27 MINUTES, 40 SECONDS EAST ALONG THE NORTH LINE OF SAID TRACT 309.95 FEET TO SAID WEST LINE; THENCE NORTH 00 DEGREES, 41 MINUTES, 20 SECONDS WEST ALONG SAID WEST LINE 185.05 FEET TO THE POINT OF BEGINNING, IN THE CITY OF AURORA, KANE COUNTY, ILLINOIS. PARCEL THREE: THAT PART OF THE SOUTH EAST 1/4 OF SECTION 26, TOWNSHIP 38 NORTH, RANGE 8 EAST OF THE THIRD PRINCIPAL MERIDIAN, DESCRIBED AS FOLLOWS: BEGINNING AT A POINT ON THE SOUTH LINE OF SUNNYMERE ADDITION, AURORA, KANE COUNTY, ILLINOIS THAT IS 200.0 FEET SOUTH 88 DEGREES, 51 MINUTES, 0 SECONDS WEST OF THE WEST LINE OF HILL AVENUE AS ESTABLISHED IN DOCUMENT 233568 (MEASURED ALONG SAID SOUTH LINE); THENCE NORTH 88 DEGREES, 51 MINUTES, 0 SECONDS EAST ALONG SAID SOUTH LINE 200.0 FEET TO SAID WEST LINE; THENCE SOUTH 0 DEGREES, 41 MINUTES, 20 SECONDS EAST ALONG SAID WEST LINE 183.0 FEET; THENCE SOUTH 88 DEGREES, 51 MINUTES, 0 SECONDS WEST PARALLEL WITH SAID SOUTH LINE 371.70 FEET TO THE CENTER LINE OF OHIO STREET; THENCE NORTH 19 DEGREES, 00 MINUTES, 0 SECONDS WEST ALONG SAID CENTER LINE 26.26 FEET TO A LINE DRAWN PARALLEL WITH AND 25.0 FEET NORTH 88 DEGREES, 41 MINUTES, 20 SECONDS WEST OF THE LAST DESCRIBED COURSE; THENCE NORTH 88 DEGREES, 51 MINUTES, 0 SECONDS EAST ALONG SAID PARALLEL LINE 179.95 FEET TO A LINE DRAWN PARALLEL WITH SAID WEST LINE FROM THE POINT OF BEGINNING; THENCE NORTH 0 DEGREES, 41 MINUTES 20 SECONDS WEST ALONG SAID LAST DESCRIBED PARALLEL LINE 158.0 FEET TO THE POINT OF BEGINNING, IN THE CITY OF AURORA, KANE COUNTY, ILLINOIS. EXCEPTING FROM PARCELS 1, 2 AND 3 THE EASTERLY 5 FEET CONVEYED TO THE CITY OF AURORA, BY WARRANTY DEED RECORDED AS DOCUMENT 200K077390.



BOUNDARY LINE	
[Symbol]	BOUNDARY LINE
[Symbol]	STRUCTURE
[Symbol]	CONCRETE BLOCK WALL
[Symbol]	CHAIN-LINK or WIRE FENCE
[Symbol]	WOOD FENCE
[Symbol]	IRON FENCE
[Symbol]	EASEMENT
[Symbol]	EDGE OF WATER
[Symbol]	WOOD
[Symbol]	CONCRETE
[Symbol]	ASPHALT
[Symbol]	BRICK or TILE
[Symbol]	WATER
[Symbol]	COVERED AREA
[Symbol]	BENCH MARK
[Symbol]	CALC. PNT. CALCULATED POINT
[Symbol]	Δ CENTRAL ANGLE or DELTA
[Symbol]	▲ CONTROL POINT
[Symbol]	■ CONCRETE MONUMENT
[Symbol]	● CATCH BASIN
[Symbol]	○ ELEVATION
[Symbol]	○ FIRE HYDRANT
[Symbol]	○ SANITARY MANHOLE
[Symbol]	○ DRAINAGE MANHOLE
[Symbol]	○ TREE
[Symbol]	○ UTILITY POLE
[Symbol]	○ WELL
[Symbol]	○ COMMON OWNERSHIP
[Symbol]	○ AIR CONDITIONING
[Symbol]	○ BEARING REFERENCE
[Symbol]	[Symbol] BLOCK
[Symbol]	[Symbol] BLOCK CORNER
[Symbol]	[Symbol] BUILDING RESTRICTION LINE
[Symbol]	[Symbol] BASEMENT
[Symbol]	[Symbol] BAY/BOW WINDOW
[Symbol]	[Symbol] CALCULATED CURVE
[Symbol]	[Symbol] CABLE TV RISER
[Symbol]	[Symbol] CONCRETE BLOCK
[Symbol]	[Symbol] CONCRETE BLOCK
[Symbol]	[Symbol] CHIMNEY
[Symbol]	[Symbol] CHAIN LINK FENCE
[Symbol]	[Symbol] CLEAN OUT
[Symbol]	[Symbol] CONCRETE CONCRETE VALLEY GUTTER
[Symbol]	[Symbol] CENTER LINE
[Symbol]	[Symbol] CONCRETE SLAB
[Symbol]	[Symbol] COVERED PORCH
[Symbol]	[Symbol] CONCRETE SIDEWALK
[Symbol]	[Symbol] CORNER
[Symbol]	[Symbol] DEAD
[Symbol]	[Symbol] DRIVEWAY
[Symbol]	[Symbol] DRAIN FIELD
[Symbol]	[Symbol] ELECTRIC UTILITY BOX
[Symbol]	[Symbol] ENCLOSURE
[Symbol]	[Symbol] ENTRANCE
[Symbol]	[Symbol] E.O.P. EDGE OF PAVEMENT
[Symbol]	[Symbol] E.O.W. EDGE OF WATER
[Symbol]	[Symbol] FENCE LINE
[Symbol]	[Symbol] FENCE POST
[Symbol]	[Symbol] FIELD
[Symbol]	[Symbol] FINISHED FLOOR
[Symbol]	[Symbol] FLORIDA POWER & LIGHT
[Symbol]	[Symbol] FOUND DRILL HOLE
[Symbol]	[Symbol] FOUND IRON PIPE # 4 CAP
[Symbol]	[Symbol] FOUND IRON ROD # CAP
[Symbol]	[Symbol] FOUND IRON ROD
[Symbol]	[Symbol] FOUND IRON PIPE
[Symbol]	[Symbol] FND. CONCRETE MONUMENT
[Symbol]	[Symbol] FOUND NAIL
[Symbol]	[Symbol] FOUND NAIL & DISC
[Symbol]	[Symbol] FOUND
[Symbol]	[Symbol] GARAGE
[Symbol]	[Symbol] GAS METER
[Symbol]	[Symbol] IDENTIFICATION
[Symbol]	[Symbol] INTERSECTION
[Symbol]	[Symbol] IRON ROD
[Symbol]	[Symbol] IRON PIPE
[Symbol]	[Symbol] LENGTH
[Symbol]	[Symbol] LICENSE # - BUSINESS
[Symbol]	[Symbol] LICENSE # - SURVEYOR
[Symbol]	[Symbol] LIGHT POST
[Symbol]	[Symbol] MEASURED
[Symbol]	[Symbol] NON RADIAL
[Symbol]	[Symbol] NOT TO SCALE
[Symbol]	[Symbol] ON CONCRETE SLAB
[Symbol]	[Symbol] ON GROUND
[Symbol]	[Symbol] OVERHEAD LINE
[Symbol]	[Symbol] OFFICIAL RECORD BOOK
[Symbol]	[Symbol] OVERHANG
[Symbol]	[Symbol] OVERALL
[Symbol]	[Symbol] OFFSET
[Symbol]	[Symbol] PARKER-KALON NAIL
[Symbol]	[Symbol] PROFESSIONAL SURVEYOR AND MAPPER
[Symbol]	[Symbol] PROFESSIONAL LAND SURVEYOR
[Symbol]	[Symbol] PLAT
[Symbol]	[Symbol] POOL EQUIPMENT
[Symbol]	[Symbol] PLANTER
[Symbol]	[Symbol] PINCHED PIPE
[Symbol]	[Symbol] PLAT BOOK
[Symbol]	[Symbol] POINT OF INTERSECTION
[Symbol]	[Symbol] POINT OF BEGINNING
[Symbol]	[Symbol] POINT OF COMMENCEMENT
[Symbol]	[Symbol] POINT OF TANGENCY
[Symbol]	[Symbol] POINT OF CURVATURE
[Symbol]	[Symbol] POINT OF COMPOUND CURVATURE
[Symbol]	[Symbol] POINT OF REVERSE CURVATURE
[Symbol]	[Symbol] PERMANENT CONTROL POINT
[Symbol]	[Symbol] PERMANENT REFERENCE MONUMENT
[Symbol]	[Symbol] RADIUS or RADIAL
[Symbol]	[Symbol] RECORD
[Symbol]	[Symbol] RESIDENCE
[Symbol]	[Symbol] RIGHT OF WAY
[Symbol]	[Symbol] SURVEY
[Symbol]	[Symbol] SETBACK LINE
[Symbol]	[Symbol] SURVEY CLOSURE LINE
[Symbol]	[Symbol] SCREEN
[Symbol]	[Symbol] SET DRILL HOLE
[Symbol]	[Symbol] SEWER
[Symbol]	[Symbol] SEWER
[Symbol]	[Symbol] SQUARE FEET
[Symbol]	[Symbol] SET IRON ROD # CAP
[Symbol]	[Symbol] SET NAIL
[Symbol]	[Symbol] SET NAIL # DISC
[Symbol]	[Symbol] STORY
[Symbol]	[Symbol] SURVEY TIE LINE
[Symbol]	[Symbol] SEWER VALVE
[Symbol]	[Symbol] SIDEWALK
[Symbol]	[Symbol] SEAWALL
[Symbol]	[Symbol] TELEPHONE FACILITIES
[Symbol]	[Symbol] TOP OF BANK
[Symbol]	[Symbol] TRANSFORMER
[Symbol]	[Symbol] TYPICAL
[Symbol]	[Symbol] WITNESS CORNER
[Symbol]	[Symbol] WATER FILTER
[Symbol]	[Symbol] WOODEN FENCE
[Symbol]	[Symbol] WATER METER/VALVE BOX
[Symbol]	[Symbol] WATER VALVE
[Symbol]	[Symbol] UTILITY POLE
[Symbol]	[Symbol] VINYL FENCE
[Symbol]	[Symbol] SEPTIC TANK
[Symbol]	[Symbol] ANCHOR EASEMENT
[Symbol]	[Symbol] CANAL MAINTENANCE ESMT.
[Symbol]	[Symbol] COUNTY UTILITY ESMT.
[Symbol]	[Symbol] DRAINAGE EASEMENT
[Symbol]	[Symbol] EASEMENT
[Symbol]	[Symbol] INGRESS/EGRESS ESMT.
[Symbol]	[Symbol] LIMITED ACCESS ESMT.
[Symbol]	[Symbol] LANDSCAPE BUFFER ESMT.
[Symbol]	[Symbol] LAKE OR LANDSCAPE MAINTENANCE EASEMENT
[Symbol]	[Symbol] MAINTENANCE EASEMENT
[Symbol]	[Symbol] PUBLIC UTILITY EASEMENT
[Symbol]	[Symbol] ROOF OVERHANG ESMT.
[Symbol]	[Symbol] STORM WATER MANAGEMENT ESMT.
[Symbol]	[Symbol] TECHNOLOGICAL UTILITY ESMT.
[Symbol]	[Symbol] UTILITY EASEMENT

STATE OF ILLINOIS } ss
COUNTY OF GRUNDY }
THIS IS TO CERTIFY THAT THIS PROFESSIONAL SERVICE CONFORMS TO THE CURRENT ILLINOIS MINIMUM STANDARDS FOR A BOUNDARY SURVEY, GIVEN UNDER MY HAND AND SEAL THIS 5th DAY OF DECEMBER, 2014 AT 316 E. JACKSON STREET IN MORRIS, IL 60550.

Kenneth Kennedy
KENNETH A. KENNEDY
035-003403
PROFESSIONAL
LAND SURVEYOR
MORRIS, IL
STATE OF ILLINOIS

ILLINOIS PROFESSIONAL LAND SURVEYOR No. 3403
LICENSE EXPIRES 11/30/2016
EXACTA LAND SURVEYORS LB# 5763

