



Removal only

Remove existing sign and dispose. All power safely capped. All holes neatly closed with silicone only.

A Photo from original installation, existing sign location.

Drawn By:

Computer generated colors are not a true match to any PMS, vinyl or paint. Rendering shown is for concept only. Actual scale and placement shown are approximate.

All Signs Shall Be Installed In Accordance With N.E.C. Article 600

Engineering Specifications
All Signs Fabricated as per
A.S.A. Specifications & 2018 I.B.C.

Electrical Specifications
All Signs Fabricated as per
2017 N.E.C. Specifications

NOTE: THIS DRAWING IS THE PROPERTY OF AURORA SIGN CO. IT IS NOT TO BE REPRODUCED, COPIED, OR EXHIBITED IN ANY FASHION WITHOUT WRITTEN CONSENT FROM AURORA SIGN CO. CHARGES OF UP TO \$2000.00 WILL BE ASSESSED FOR ANY MIS-USE OF THESE DRAWINGS.



Prepared For:
Aurora City Hall

Address:
44 E. Downer Pl

Drwg: 221192 **Sheet:** 1A **Design Date:**

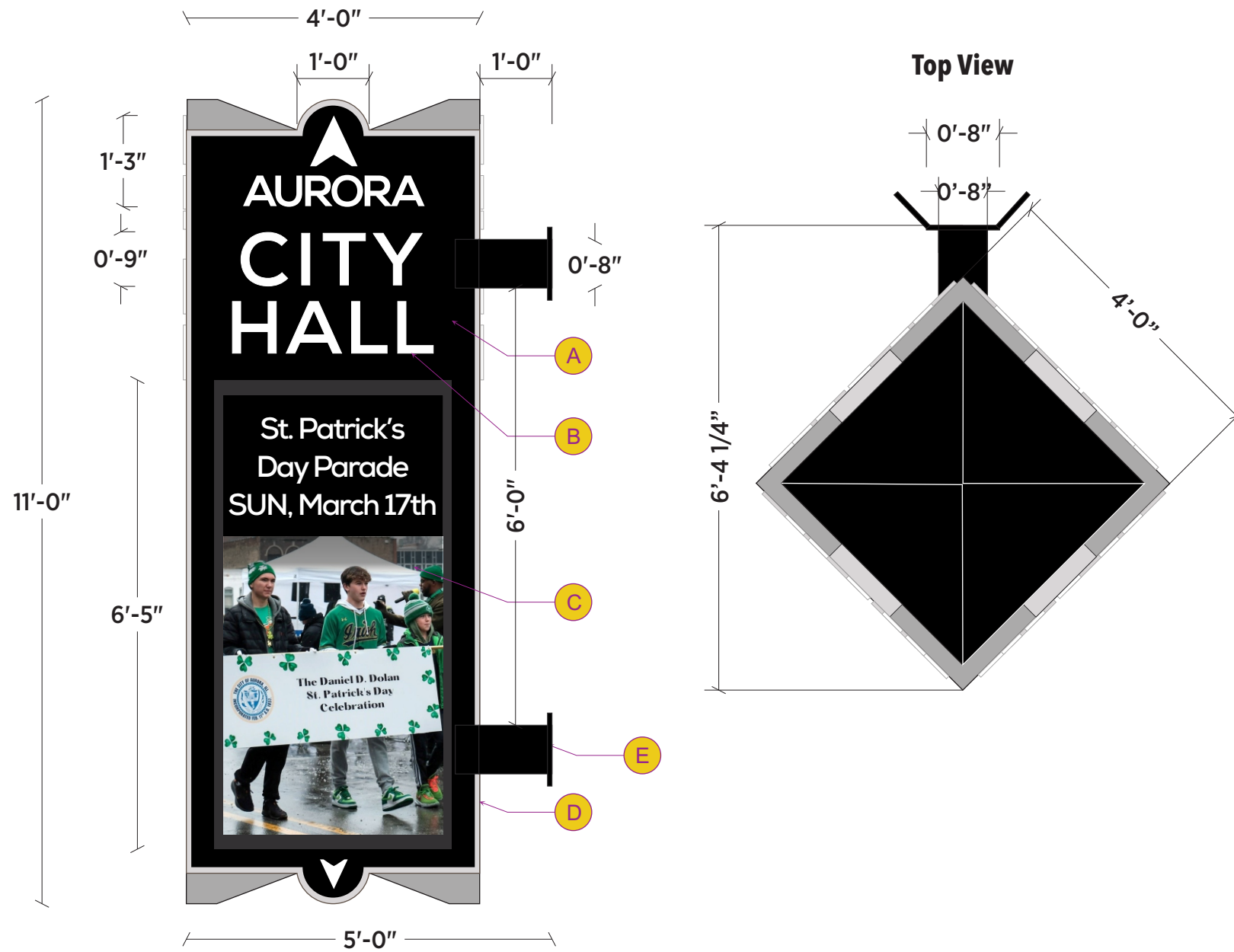
Location Name:

City/State:
Aurora, IL 60505

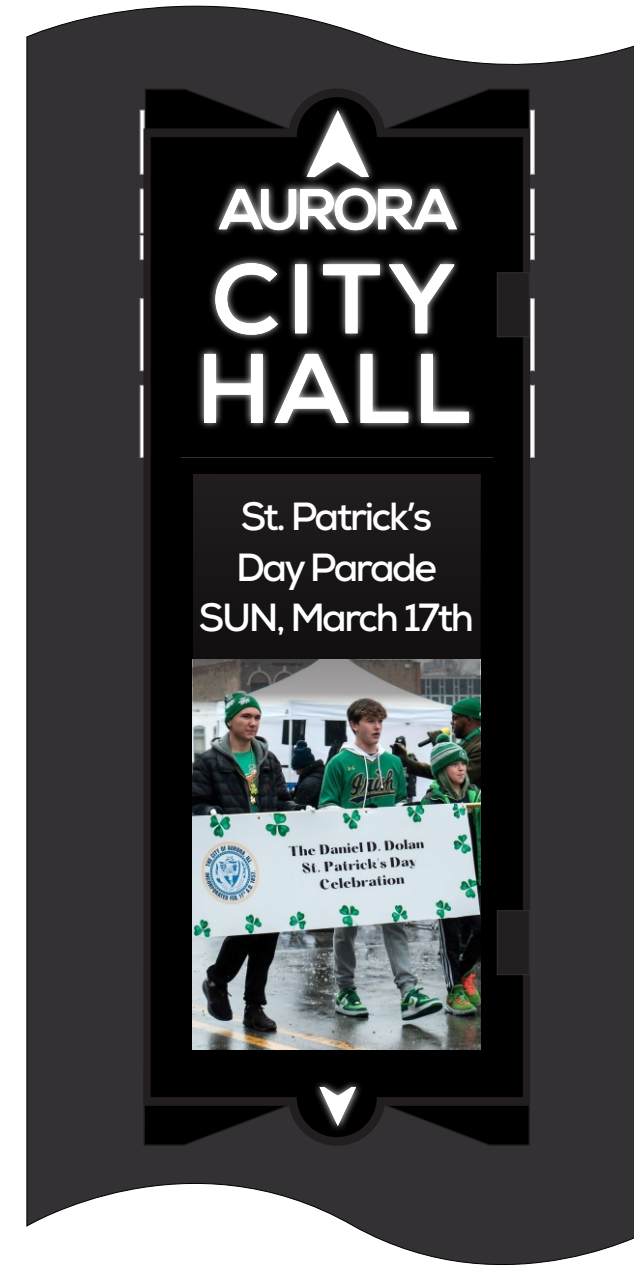
Rev A:	Rev D:
Rev B:	Rev E:
Rev C:	Rev F:

LANDLORD APPROVAL SIGNATURE

Option C - 4 Sided Sign



Sample Of Illumination



4-Sided Illuminated Projecting Sign with EMCs

Materials: Fabricate and install sign of Steel framing, aluminum faces & acrylic characters.

Sign Face: to be routed .125 aluminum and backed with 1/2" white push-thru acrylic (7328).

Frame: Custom steel frame for face of 4-sided sign. Custom steel framing. (***Engineering Required**)

EMC (4 Units): Unit to have a visual area of 3' x 6'. W6MM Color - cabinet size: 39"w x 6'-5"h

Illumination: Internal Illumination to be white LEDs.

Finish: All exposed metal surfaces to be coated with acrylic polyurethane.

- A** Panface cabinet flush with EMC. With routed aluminum face and backed with Push-Thru acrylic.
- B** 1/2" Push Thru Acrylic
- C** 3' w x 6' h EMC Unit on all 4 sides
- D** 1 or 2 vents for EMCs on bottom of sign.
- E** **Custom Mounting bracket (VIF)**

*** Information Required Prior to fabrication**
 - Full Survey to be taken prior to fabrication.
 - Engineering Required for stability of signage prior to fabrication.

SCALE 1/2" = 1' Drawn By: LH

■ BLACK	Paint
■ PMS Cool Gray 3	Paint

Computer generated colors are not a true match to any PMS, vinyl or paint. Rendering shown is for concept only. Actual scale and placement shown are approximate.

All Signs Shall Be Installed In Accordance With N.E.C. Article 600

Engineering Specifications All Signs Fabricated as per A.S.A. Specifications & 2018 I.B.C.	Electrical Specifications All Signs Fabricated as per 2017 N.E.C. Specifications
--	--

NOTE: THIS DRAWING IS THE PROPERTY OF AURORA SIGN CO. IT IS NOT TO BE REPRODUCED, COPIED, OR EXHIBITED IN ANY FASHION WITHOUT WRITTEN CONSENT FROM AURORA SIGN CO. CHARGES OF UP TO \$2000.00 WILL BE ASSESSED FOR ANY MIS-USE OF THESE DRAWINGS.



Prepared For: Aurora City Hall	Address: 44 E. Downer Pl	Drwg: 221192	Sheet: 4	Design Date: 2/9/2024	LANDLORD APPROVAL SIGNATURE
Location Name:	City/State: Aurora, IL 60505	Rev A: 2/22/2024	Rev D:	Rev E:	
		Rev B:	Rev E:	Rev F:	
		Rev C:	Rev F:		

**ADDITIONAL MEASUREMENTS
REQUIRED TO VERIFY SCALE OF SIGN**

INSTALL INSTRUCTIONS:

Center sign on facade as shown.
Connect to electrical service
to be provided by others prior to install.

SPECIAL NOTES:

- * Information Required Prior to fabrication
- VERIFY BUILDING MEASUREMENTS FOR PROPER SCALING
- Full Survey to be taken prior to fabrication.

N.T.S.	Drawn By: LH
--------	--------------

Computer generated colors are not a true match to any PMS, vinyl or paint. Rendering shown is for concept only. Actual scale and placement shown are approximate.

All Signs Shall Be Installed In Accordance With N.E.C. Article 600

Engineering Specifications
All Signs Fabricated as per
A.S.A. Specifications & 2018 I.B.C.

Electrical Specifications
All Signs Fabricated as per
2017 N.E.C. Specifications

SouthEast Corner looking East



SouthEast Corner looking North



NOTE: THIS DRAWING IS THE PROPERTY OF AURORA SIGN CO. IT IS NOT TO BE REPRODUCED, COPIED, OR EXHIBITED IN ANY FASHION WITHOUT WRITTEN CONSENT FROM AURORA SIGN CO. CHARGES OF UP TO \$2000.00 WILL BE ASSESSED FOR ANY MIS-USE OF THESE DRAWINGS.

**AURORA
SIGN CO.**

OFFICE: 630-898-5900 • AURORASIGN.COM
30W196 CALUMET AVENUE W • WARRENVILLE, IL 60555

Prepared For:
Aurora City Hall

Address:
44 E. Downer Pl

Drwg: 221192 **Sheet:** 4A **Design Date:** 2/9/2024

LANDLORD APPROVAL SIGNATURE

Location Name:

City/State:
Aurora, IL 60505

Rev A: 2/22/2024

Rev D:

Rev B:

Rev E:

Rev C:

Rev F:

**ADDITIONAL MEASUREMENTS
REQUIRED TO VERIFY SCALE OF SIGN**



SouthEast Corner looking West



SouthEast Corner looking South

INSTALL INSTRUCTIONS:

Center sign on facade as shown.
Connect to electrical service
to be provided by others prior to install.

SPECIAL NOTES:

- * Information Required Prior to fabrication
- VERIFY BUILDING MEASUREMENTS FOR PROPER SCALING
- Full Survey to be taken prior to fabrication.

N.T.S.	Drawn By:
---------------	-----------

Computer generated colors are not a true match to any PMS, vinyl or paint. Rendering shown is for concept only. Actual scale and placement shown are approximate.

All Signs Shall Be Installed In Accordance With N.E.C. Article 600

Engineering Specifications
All Signs Fabricated as per
A.S.A. Specifications & 2018 I.B.C.

Electrical Specifications
All Signs Fabricated as per
2017 N.E.C. Specifications

NOTE: THIS DRAWING IS THE PROPERTY OF AURORA SIGN CO. IT IS NOT TO BE REPRODUCED, COPIED, OR EXHIBITED IN ANY FASHION WITHOUT WRITTEN CONSENT FROM AURORA SIGN CO. CHARGES OF UP TO \$2000.00 WILL BE ASSESSED FOR ANY MIS-USE OF THESE DRAWINGS.

Prepared For:
Aurora City Hall

Address:
44 E. Downer Pl

Drwg: 221192 **Sheet:** 4A **Design Date:** 2/9/2024

Rev A: 2/22/2024

Rev D:

Rev B:

Rev E:

Rev C:

Rev F:

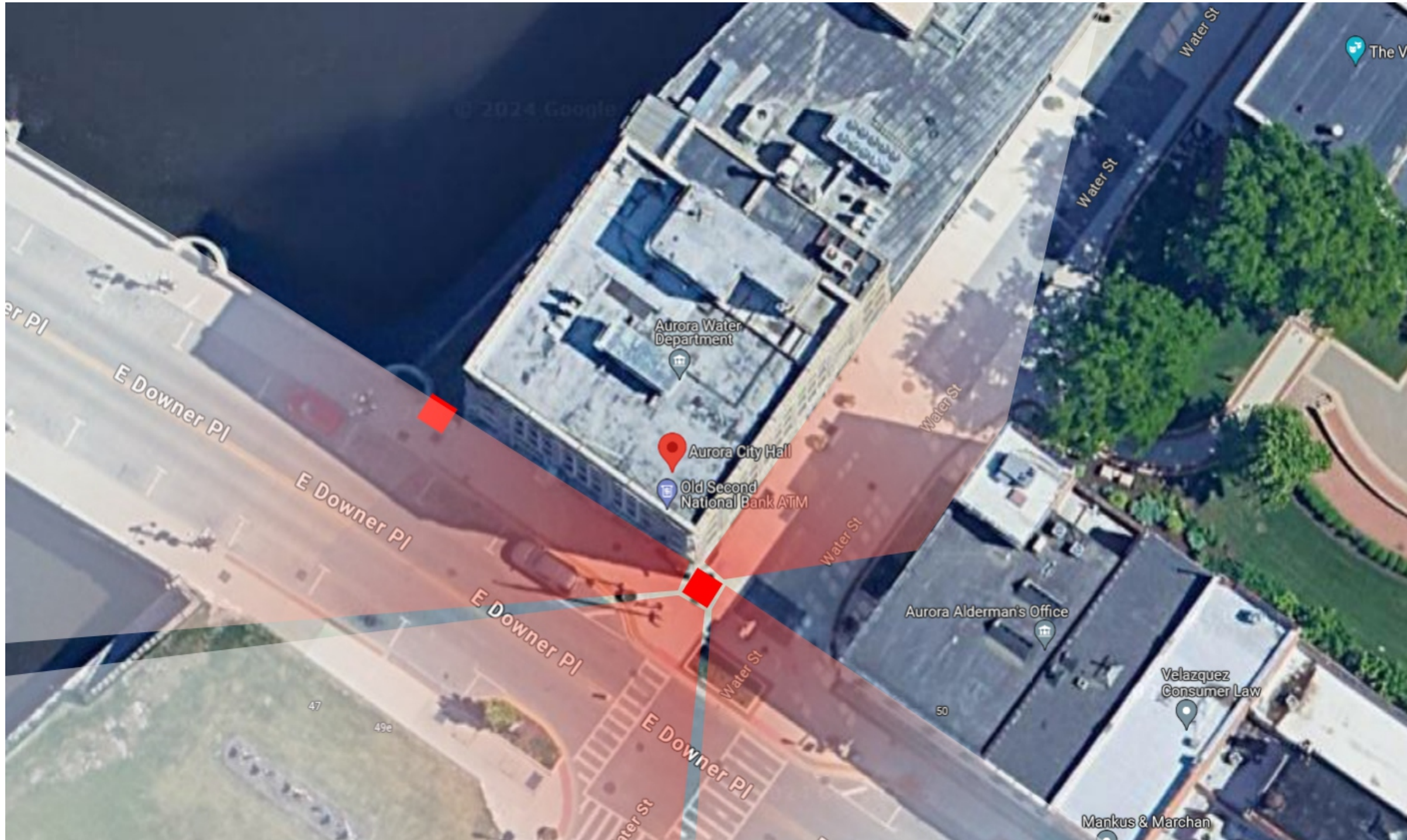
Location Name:

City/State:
Aurora, IL 60505

LANDLORD APPROVAL SIGNATURE

Overhead - 4 SIDED

Showing visible areas and distance of visibility of sign



SCALE 3/8"=1'	Drawn By: LH
----------------------	--------------

Computer generated colors are not a true match to any PMS, vinyl or paint. Rendering shown is for concept only. Actual scale and placement shown are approximate.

All Signs Shall Be Installed In Accordance With N.E.C. Article 600

Engineering Specifications All Signs Fabricated as per A.S.A. Specifications & 2018 I.B.C.	Electrical Specifications All Signs Fabricated as per 2017 N.E.C. Specifications
--	--

NOTE: THIS DRAWING IS THE PROPERTY OF AURORA SIGN CO. IT IS NOT TO BE REPRODUCED, COPIED, OR EXHIBITED IN ANY FASHION WITHOUT WRITTEN CONSENT FROM AURORA SIGN CO. CHARGES OF UP TO \$2000.00 WILL BE ASSESSED FOR ANY MIS-USE OF THESE DRAWINGS.



Prepared For: Aurora City Hall	Address: 44 E. Downer Pl	Drwg: 221192	Sheet: Detail	Design Date: 2/9/2024	LANDLORD APPROVAL SIGNATURE
Location Name:	City/State: Aurora, IL 60505	Rev A:		Rev D:	
		Rev B:		Rev E:	
		Rev C:		Rev F:	



Single Sided Illuminated wall sign

Materials: Fabricate and install sign of aluminum framing, aluminum faces & acrylic characters.

Sign Face: to be routed .125 aluminum and backed with 1/2" white push-thru acrylic (7328).

Illumination: Internal Illumination to be white LEDs.

Finish: All exposed metal surfaces to be coated with acrylic polyurethane.



SCALE 1"=1' **Drawn By:**

■ BLACK	Paint
■ PMS Cool Gray 3	Paint

Computer generated colors are not a true match to any PMS, vinyl or paint. Rendering shown is for concept only. Actual scale and placement shown are approximate.

All Signs Shall Be Installed In Accordance With N.E.C. Article 600

Engineering Specifications All Signs Fabricated as per A.S.A. Specifications & 2018 I.B.C.	Electrical Specifications All Signs Fabricated as per 2017 N.E.C. Specifications
--	--

NOTE: THIS DRAWING IS THE PROPERTY OF AURORA SIGN CO. IT IS NOT TO BE REPRODUCED, COPIED, OR EXHIBITED IN ANY FASHION WITHOUT WRITTEN CONSENT FROM AURORA SIGN CO. CHARGES OF UP TO \$2000.00 WILL BE ASSESSED FOR ANY MIS-USE OF THESE DRAWINGS.



Prepared For: Aurora City Hall	Address: 44 E. Downer Pl	Drwg: 221192	Sheet: 6	Design Date: 3/12/2024
Location Name:	City/State: Aurora, IL 60505	Rev A:	Rev D:	
		Rev B:	Rev E:	
		Rev C:	Rev F:	

LANDLORD APPROVAL SIGNATURE



South Elevation looking West



South Elevation looking East

Drawn By:

Computer generated colors are not a true match to any PMS, vinyl or paint. Rendering shown is for concept only. Actual scale and placement shown are approximate.

All Signs Shall Be Installed In Accordance With N.E.C. Article 600

Engineering Specifications
All Signs Fabricated as per
A.S.A. Specifications & 2018 I.B.C.

Electrical Specifications
All Signs Fabricated as per
2017 N.E.C. Specifications

NOTE: THIS DRAWING IS THE PROPERTY OF AURORA SIGN CO. IT IS NOT TO BE REPRODUCED, COPIED, OR EXHIBITED IN ANY FASHION WITHOUT WRITTEN CONSENT FROM AURORA SIGN CO. CHARGES OF UP TO \$2000.00 WILL BE ASSESSED FOR ANY MIS-USE OF THESE DRAWINGS.

**AURORA
SIGN CO.**

OFFICE: 630-898-5900 • AURORASIGN.COM
30W196 CALUMET AVENUE W • WARRENVILLE, IL 60555

Prepared For:
Aurora City Hall

Address:
44 E. Downer Pl

Drwg: 221192 Sheet: 6A Design Date: 4/9/2024

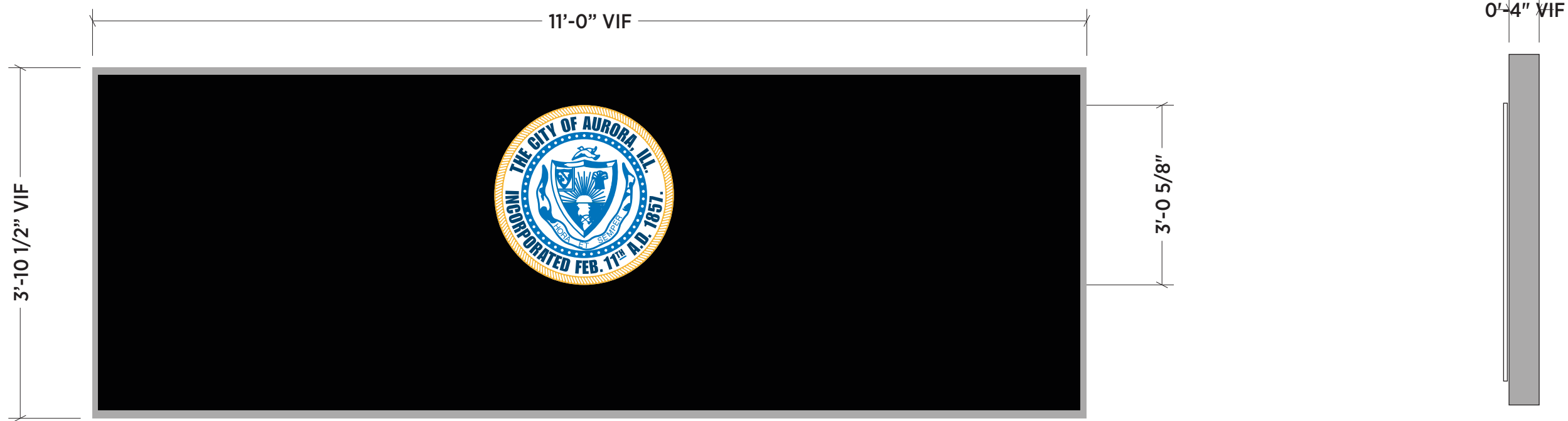
Location Name:

City/State:
Aurora, IL 60505

Rev A:
Rev B:
Rev C:

Rev D:
Rev E:
Rev F:

LANDLORD APPROVAL SIGNATURE



Non-illuminated wall panel with panface backer and raised seal

Materials: Fabricate and install sign of aluminum framing, aluminum faces & acrylic characters.

Sign Face: to .125 aluminum with 1/2" acrylic raised graphics.

Finish: All exposed metal surfaces to be coated with acrylic polyurethane.



Building Current Condition



SCALE 3/4"=1' Drawn By:

	BLACK	Paint
	PMS Cool Gray 3	Paint

Computer generated colors are not a true match to any PMS, vinyl or paint. Rendering shown is for concept only. Actual scale and placement shown are approximate.

All Signs Shall Be Installed In Accordance With N.E.C. Article 600

Engineering Specifications All Signs Fabricated as per A.S.A. Specifications & 2018 I.B.C.	Electrical Specifications All Signs Fabricated as per 2017 N.E.C. Specifications
--	--

NOTE: THIS DRAWING IS THE PROPERTY OF AURORA SIGN CO. IT IS NOT TO BE REPRODUCED, COPIED, OR EXHIBITED IN ANY FASHION WITHOUT WRITTEN CONSENT FROM AURORA SIGN CO. CHARGES OF UP TO \$2000.00 WILL BE ASSESSED FOR ANY MIS-USE OF THESE DRAWINGS.



Prepared For: Aurora City Hall	Address: 44 E. Downer Pl	Drwg: 221192	Sheet: 7	Design Date: 6/4/2024	LANDLORD APPROVAL SIGNATURE
Location Name:	City/State: Aurora, IL 60505	Rev A:		Rev D:	
		Rev B:		Rev E:	
		Rev C:		Rev F:	