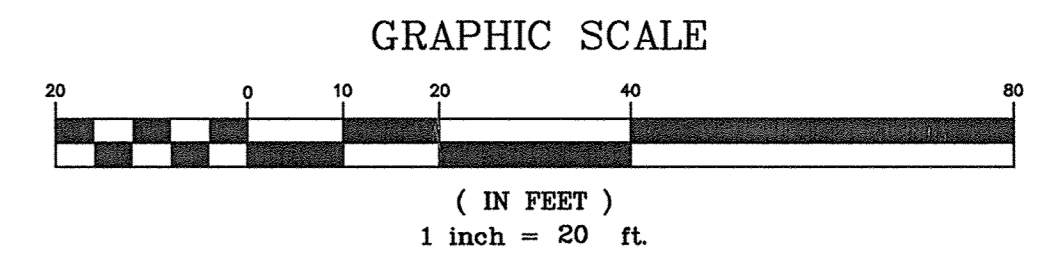
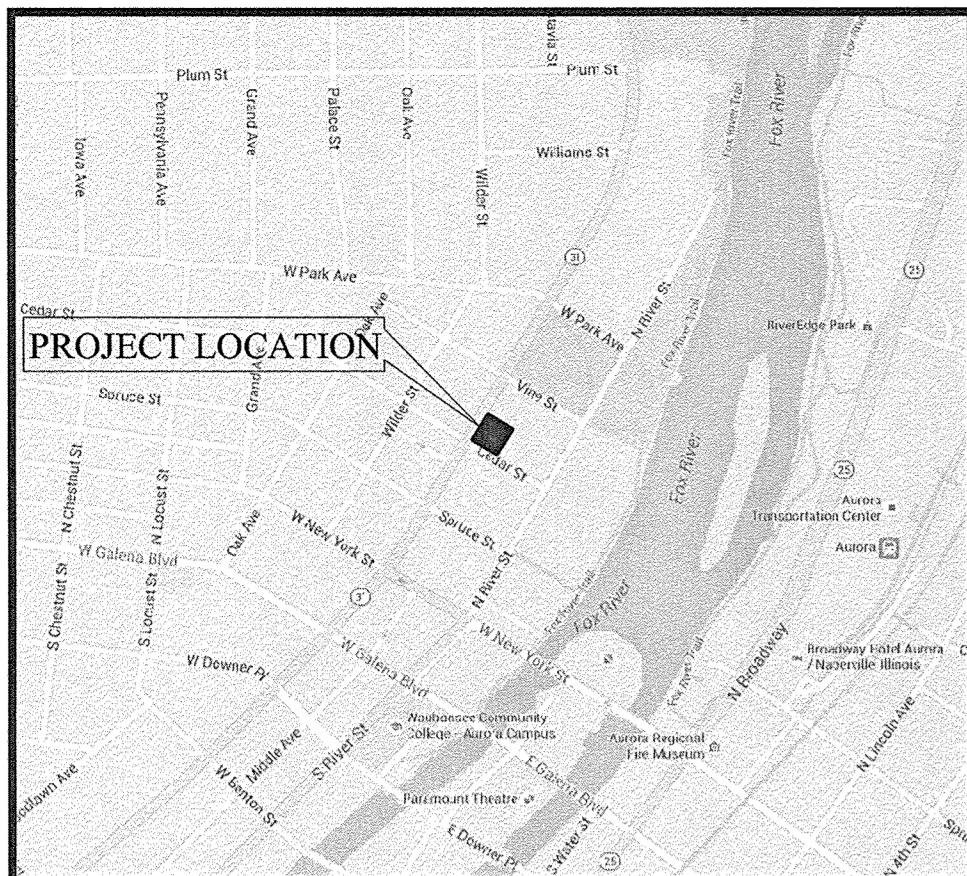


BOUNDARY AND TOPOGRAPHIC SURVEY



Know what's below.
Call before you dig.

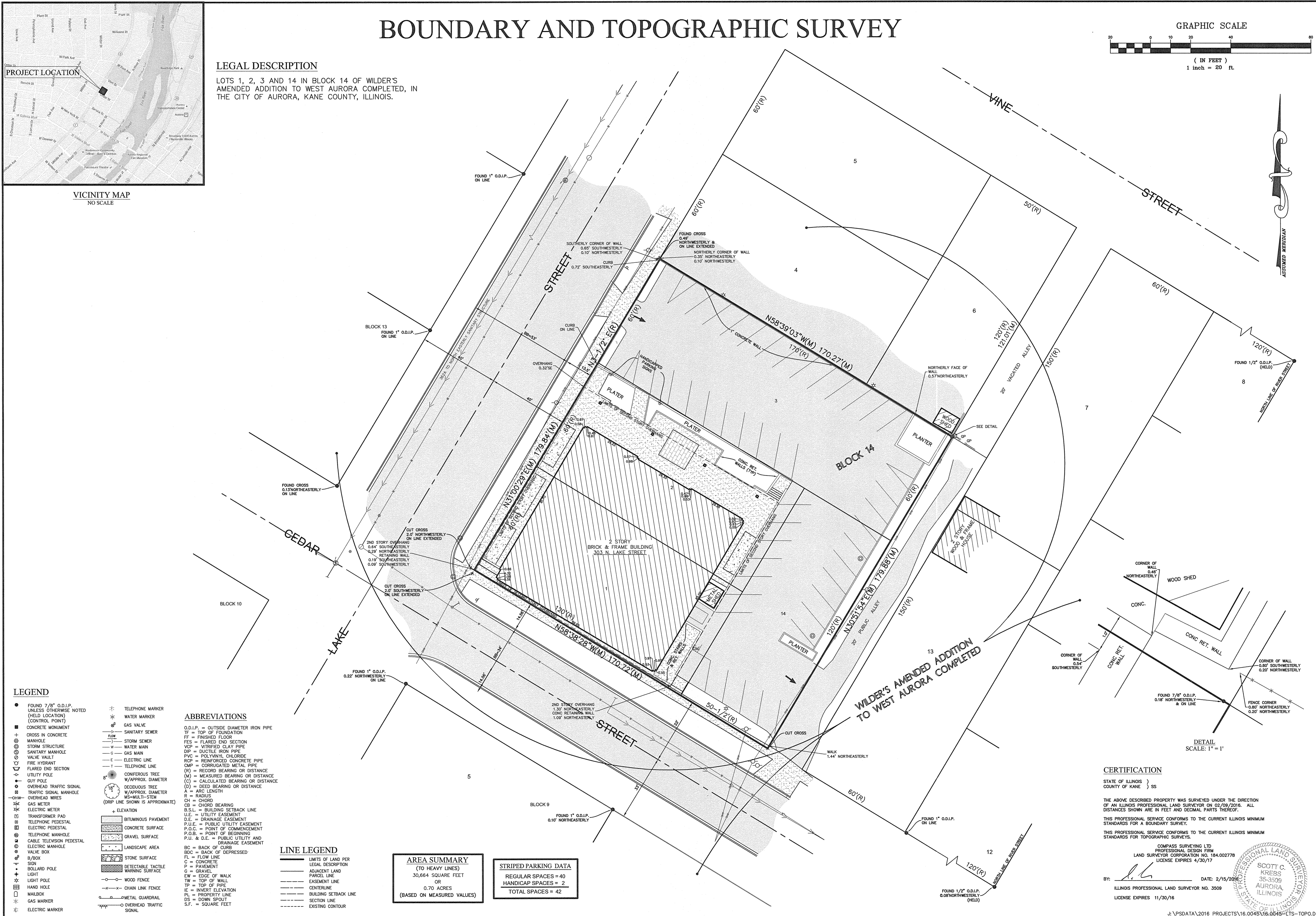
UTILITY STATEMENT
THE UNDERGROUND UTILITIES SHOWN HAVE BEEN LOCATED FROM VISUAL FIELD SURVEYING AND EXISTING DRAWINGS, MAPS AND RECORDS. THE SURVEYOR DOES NOT WARRANT THE ACCURACY OR GUARANTEE THAT THE UNDERGROUND UTILITIES SHOWN COMPRISE ALL UTILITIES THAT MAY BE PRESENT. THE SURVEYOR DOES NOT WARRANT THAT ANY UTILITIES NOT SHOWN ARE NOT PRESENT. THE SURVEYOR DOES NOT WARRANT THAT ANY UTILITIES NOT SHOWN ARE NOT PRESENT. THE SURVEYOR DOES NOT WARRANT THAT ANY UTILITIES NOT SHOWN ARE NOT PRESENT.



VICINITY MAP
NO SCALE

LEGAL DESCRIPTION

LOTS 1, 2, 3 AND 14 IN BLOCK 14 OF WILDER'S AMENDED ADDITION TO WEST AURORA COMPLETED, IN THE CITY OF AURORA, KANE COUNTY, ILLINOIS.



- ### LEGEND
- FOUND 7/8" O.D.I.P. (HELD LOCATION) (CONTROL POINT)
 - CONCRETE MONUMENT
 - CROSS IN CONCRETE
 - MANHOLE
 - STORM STRUCTURE
 - SANITARY MANHOLE
 - VALVE VAULT
 - FIRE HYDRANT
 - FLARED END SECTION
 - UTILITY POLE
 - GUY POLE
 - OVERHEAD TRAFFIC SIGNAL
 - TRAFFIC SIGNAL MANHOLE
 - OVERHEAD WIRES
 - GAS METER
 - ELECTRIC METER
 - TRANSFORMER PAD
 - TELEPHONE PEDESTAL
 - ELECTRIC PEDESTAL
 - TELEPHONE MANHOLE
 - CABLE TELEVISION PEDESTAL
 - ELECTRIC MANHOLE
 - VALVE BOX
 - B/BOX
 - SIGN
 - BOLLARD POLE
 - LIGHT
 - LIGHT POLE
 - HAND HOLE
 - MALBOX
 - GAS MARKER
 - ELECTRIC MARKER
 - TELEPHONE MARKER
 - WATER MARKER
 - GAS VALVE
 - SANITARY SEWER
 - STORM SEWER
 - WATER MAIN
 - GAS MAIN
 - ELECTRIC LINE
 - TELEPHONE LINE
 - CONIFEROUS TREE
 - DECIDUOUS TREE
 - W/ APPROX. DIAMETER
 - W/ APPROX. DIAMETER
 - MS=MULTI-STEM
 - (DRIP LINE SHOWN IS APPROXIMATE)
 - ELEVATION
 - BITUMINOUS PAVEMENT
 - CONCRETE SURFACE
 - GRAVEL SURFACE
 - LANDSCAPE AREA
 - STONE SURFACE
 - DETECTABLE TACTILE WARNING SURFACE
 - WOOD FENCE
 - CHAIN LINK FENCE
 - METAL GUARDRAIL
 - OVERHEAD TRAFFIC SIGNAL

- ### ABBREVIATIONS
- O.D.I.P. = OUTSIDE DIAMETER IRON PIPE
 TF = TOP OF FOUNDATION
 FF = FINISHED FLOOR
 FES = FLARED END SECTION
 VCP = VITRIFIED CLAY PIPE
 DIP = DUCTILE IRON PIPE
 PVC = POLYVINYL CHLORIDE
 RCP = REINFORCED CONCRETE PIPE
 CMP = CORRUGATED METAL PIPE
 CB = CHORD BEARING OR DISTANCE
 (R) = RECORD BEARING OR DISTANCE
 (C) = CALCULATED BEARING OR DISTANCE
 (D) = DEED BEARING OR DISTANCE
 A = ARC LENGTH
 R = RADIUS
 CH = CHORD
 CB = CHORD BEARING
 B.S.L. = BUILDING SETBACK LINE
 U.E. = UTILITY EASEMENT
 D.E. = DRAINAGE EASEMENT
 P.U.E. = PUBLIC UTILITY EASEMENT
 P.O.C. = POINT OF COMMENCEMENT
 P.O.B. = POINT OF BEGINNING
 P.U. & D.E. = PUBLIC UTILITY AND DRAINAGE EASEMENT
 BC = BACK OF CURB
 BDC = BACK OF DEPRESSED
 FL = FLOW LINE
 C = CONCRETE
 P = PAVEMENT
 G = GRAVEL
 EW = EDGE OF WALK
 TW = TOP OF WALL
 TP = TOP OF PIPE
 IE = INVERT ELEVATION
 PL = PROPERTY LINE
 SECTION LINE
 DS = DOWN SPOUT
 S.F. = SQUARE FEET

- ### LINE LEGEND
- LIMITS OF LAND PER LEGAL DESCRIPTION
 - ADJACENT LAND PARCEL LINE
 - EASEMENT LINE
 - CENTERLINE
 - BUILDING SETBACK LINE
 - SECTION LINE
 - EXISTING CONTOUR

| AREA SUMMARY (TO HEAVY LINES) | |
|----------------------------------|----------------------------|
| 30,864 SQUARE FEET | OR |
| 0.70 ACRES | (BASED ON MEASURED VALUES) |

| STRIPED PARKING DATA | |
|----------------------|---------------------|
| REGULAR SPACES = 40 | HANDICAP SPACES = 2 |
| TOTAL SPACES = 42 | |

CERTIFICATION

STATE OF ILLINOIS)
 COUNTY OF KANE) SS

THE ABOVE DESCRIBED PROPERTY WAS SURVEYED UNDER THE DIRECTION OF AN ILLINOIS PROFESSIONAL LAND SURVEYOR ON 02/09/2016. ALL DISTANCES SHOWN ARE IN FEET AND DECIMAL PARTS THEREOF.

THIS PROFESSIONAL SERVICE CONFORMS TO THE CURRENT ILLINOIS MINIMUM STANDARDS FOR A BOUNDARY SURVEY.

THIS PROFESSIONAL SERVICE CONFORMS TO THE CURRENT ILLINOIS MINIMUM STANDARDS FOR TOPOGRAPHIC SURVEYS.

COMPASS SURVEYING LTD
 PROFESSIONAL DESIGN FIRM
 LAND SURVEYOR CORPORATION NO. 184.002778
 LICENSE EXPIRES 4/30/17

BY: *[Signature]* DATE: 2/15/2016
 ILLINOIS PROFESSIONAL LAND SURVEYOR NO. 3509
 LICENSE EXPIRES 11/30/16

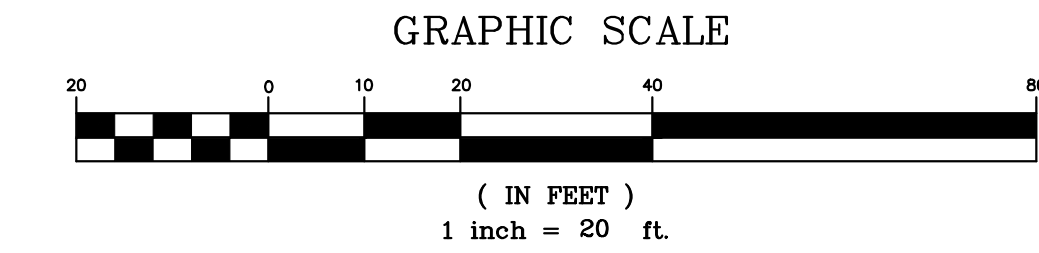
| NO. | DATE | REVISIONS | DRAWN BY | CHECKED BY | DATE |
|-----|------|-----------|----------|------------|------|
| | | | | | |

| | |
|---------|--|
| PROJECT | 303 NORTH LAKE STREET AURORA, ILLINOIS |
| CLIENT | ESM CIVIL SOLUTIONS, LLC NAPERVILLE, ILLINOIS 60563 |

COMPASS SURVEYING LTD
 TOPOGRAPHY • CONSTRUCTION STAKING
 2631 GINGER WOODS PARKWAY, STE. 100
 AURORA, IL 60502
 PHONE: (630) 820-9100 FAX: (630) 820-7030 EMAIL: ADMIN@COMPASSSURVEYING.COM

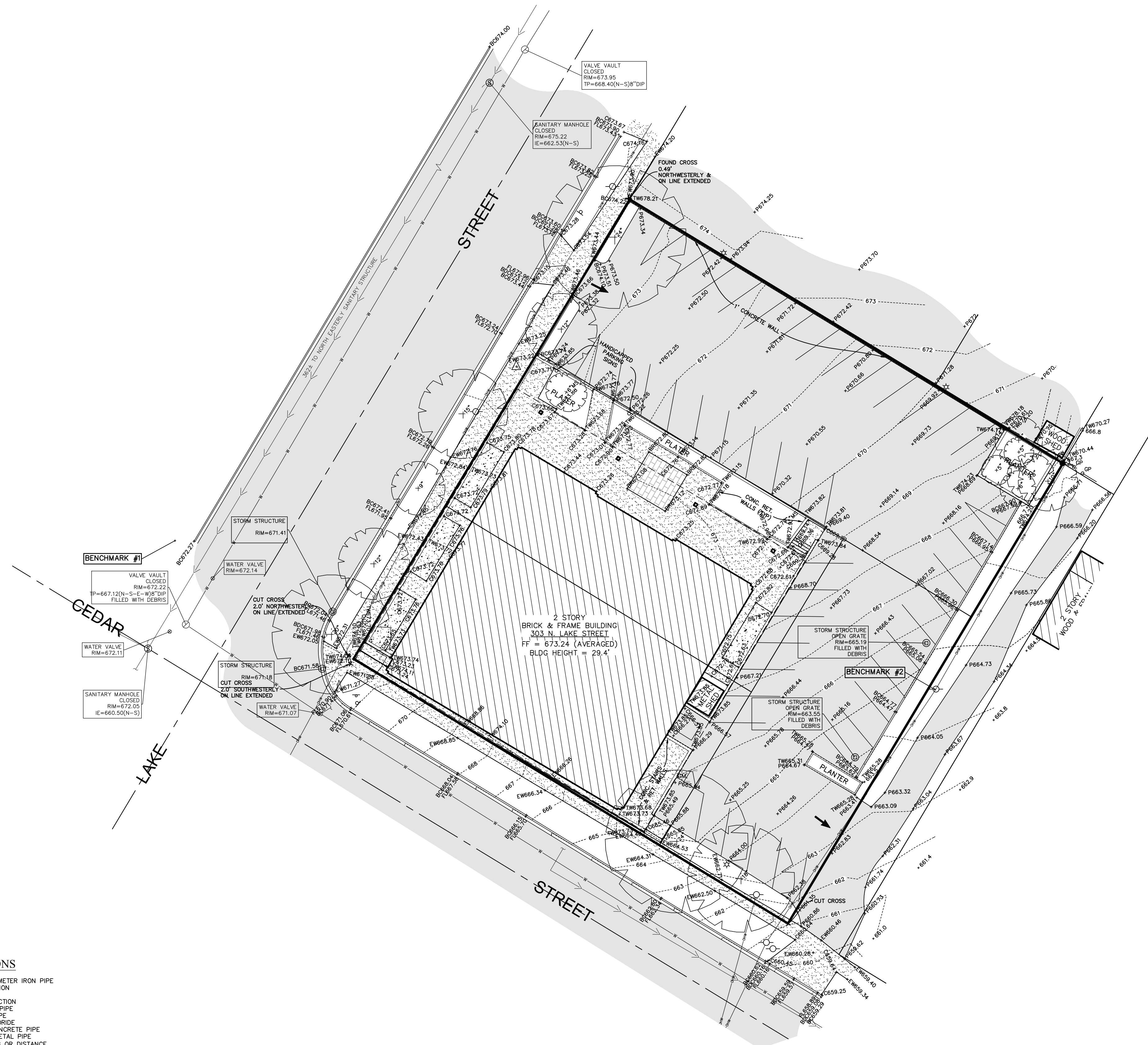
SCALE: 1" = 20'
1 OF 2
 PROJ. NO.: 16.0045

BOUNDARY AND TOPOGRAPHIC SURVEY



811
Know what's below.
Call before you dig.

UTILITY STATEMENT
THE UNDEGROUND UTILITIES SHOWN HAVE BEEN LOCATED FROM RECORDS SUPPLIED TO SURVEYOR. THE SURVEYOR MAKES NO WARRANTY AS TO THE ACCURACY OF THE INFORMATION PROVIDED. ALL SUCH UTILITIES IN THE AREA, EITHER IN SERVICE OR NOT, ARE SHOWN AS BEST KNOWN TO THE SURVEYOR. THE EXACT LOCATION OF ANY UTILITIES NOT SHOWN ARE NOT GUARANTEED. IT IS THE RESPONSIBILITY OF THE CLIENT TO OBTAIN ALL NECESSARY INFORMATION FROM THE APPROPRIATE AGENCIES. THE SURVEYOR HAS PHYSICALLY LOCATED THE UTILITIES SHOWN AND HAS NO KNOWLEDGE OF ANY OTHER UTILITIES IN THE AREA.



- ### LEGEND
- FOUND 7/8" O.D.I.P. UNLESS OTHERWISE NOTED (HELD LOCATION) (CONTROL POINT)
 - CONCRETE MONUMENT
 - ⊕ CROSS IN CONCRETE
 - ⊙ MANHOLE
 - ⊙ STORM STRUCTURE
 - ⊙ SANITARY MANHOLE
 - ⊙ VALVE VAULT
 - ⊙ FIRE HYDRANT
 - ⊙ FLARED END SECTION
 - ⊙ UTILITY POLE
 - ⊙ GUY POLE
 - ⊙ OVERHEAD TRAFFIC SIGNAL
 - ⊙ TRAFFIC SIGNAL MANHOLE
 - ⊙ OVERHEAD WIRES
 - ⊙ HW- GAS METER
 - ⊙ ELECTRIC METER
 - ⊙ TRANSFORMER PAD
 - ⊙ TELEPHONE PEDESTAL
 - ⊙ ELECTRIC PEDESTAL
 - ⊙ TELEPHONE MANHOLE
 - ⊙ CABLE TELEVISION PEDESTAL
 - ⊙ ELECTRIC MANHOLE
 - ⊙ VALVE BOX
 - ⊙ B/BOX
 - ⊙ SIGN
 - ⊙ BILLIARD POLE
 - ⊙ LIGHT
 - ⊙ LIGHT POLE
 - ⊙ HAND HOLE
 - ⊙ MAILBOX
 - ⊙ GAS MARKER
 - ⊙ ELECTRIC MARKER
 - ⊙ TELEPHONE MARKER
 - ⊙ WATER MARKER
 - ⊙ GAS VALVE
 - ⊙ SANITARY SEWER
 - ⊙ STORM SEWER
 - ⊙ WATER MAIN
 - ⊙ GAS MAIN
 - ⊙ ELECTRIC LINE
 - ⊙ TELEPHONE LINE
 - ⊙ CONFEROUS TREE
 - ⊙ W/APPROX. DIAMETER
 - ⊙ DECIDUOUS TREE
 - ⊙ W/APPROX. DIAMETER
 - ⊙ MS=MULTI-STEM
 - ⊙ (DRIP LINE SHOWN IS APPROXIMATE)
 - ⊙ ELEVATION
 - ▨ BITUMINOUS PAVEMENT
 - ▨ CONCRETE SURFACE
 - ▨ GRAVEL SURFACE
 - ▨ LANDSCAPE AREA
 - ▨ STONE SURFACE
 - ▨ DETECTABLE TACTILE WARNING SURFACE
 - WOOD FENCE
 - CHAIN LINK FENCE
 - METAL GUARDRAIL
 - OVERHEAD TRAFFIC SIGNAL

- ### ABBREVIATIONS
- O.D.I.P. = OUTSIDE DIAMETER IRON PIPE
 TF = TOP OF FOUNDATION
 FF = FINISHED FLOOR
 FED = FLARED END SECTION
 VCP = VITRIFIED CLAY PIPE
 DIP = DUCTILE IRON PIPE
 PVC = POLYVINYL CHLORIDE
 RCP = REINFORCED CONCRETE PIPE
 CMP = CORRUGATED METAL PIPE
 (R) = RECORD BEARING OR DISTANCE
 (M) = MEASURED BEARING OR DISTANCE
 (C) = CALCULATED BEARING OR DISTANCE
 (D) = DEED BEARING OR DISTANCE
 A = ARC LENGTH
 R = RADIUS
 CH = CHORD
 CB = CHORD BEARING
 B.S.L. = BUILDING SETBACK LINE
 U.E. = UTILITY EASEMENT
 D.E. = DRAINAGE EASEMENT
 P.U.E. = PUBLIC UTILITY EASEMENT
 P.O.C. = POINT OF COMMENCEMENT
 P.O.B. = POINT OF BEGINNING
 P.U. & D.E. = PUBLIC UTILITY AND DRAINAGE EASEMENT
 BC = BACK OF CURB
 BDC = BACK OF DEPRESSED CURB
 FL = FLOW LINE
 C = CONCRETE
 TP = TOP OF PIPE
 IE = INVERT ELEVATION
 PL = PROPERTY LINE
 DS = DOWN SPOUT
 S.F. = SQUARE FEET

- ### LINE LEGEND
- LIMITS OF LAND PER LEGAL DESCRIPTION
 ADJACENT LAND PARCEL LINE
 EASEMENT LINE
 CENTERLINE
 BUILDING SETBACK LINE
 SECTION LINE
 EXISTING CONTOUR

BENCHMARKS:

REFERENCE BENCHMARK:
 CITY OF AURORA BENCHMARK 13 SOUTH
 ELEVATION = 639.16

SITE BENCHMARKS:
 SITE BENCHMARK #1
 TAG BOLT ON FIRE HYDRANT AT NORTHEAST CORNER OF LAKES STREET AND CEDAR STREET.
 ELEVATION = 673.72
 DATUM = NAVD88

SITE BENCHMARK #2
 MINI RAILROAD SPIKE ON WEST FACE OF POWER POLE ALONG EASTERLY PROJECT PROPERTY LINE APPROXIMATELY AT MID POINT.
 ELEVATION = 665.35
 DATUM = NAVD88

UTILITY CONTACTS

DIG #A046 0586
AURORA

| Municipality | Cable Television | Electric | Natural Gas | Telecommunications | Water/Sanitary/Storm |
|-----------------|---|-----------------------|-----------------------------|----------------------|--|
| Aurora, City of | COMCAST CABLE 44 East Downer Place Aurora, IL 60507 630.892.8811 630.892.0741 | ComEd 630.576.7094 | Nicor gas.maps@nicor.com | AT&T 630.573.5450 | Fox Metro Water Reclamation Dist. Sandy Medrano or Mike Frankno 630.892.4378 smedrano@foxmetro.org mfrankno@foxmetro.org |
| | City of Aurora Steve Andras 630.256.3200 sandras@aurora-il.org | | | | |

| | | | | |
|----------------|---|---------------|---|-------------------|
| DATE: 02-15-16 | FCAM/RS | DRAWN BY: RHM | CHECKED BY: SK | BOOK 455 PG 86-88 |
| PROJECT | 303 NORTH LAKE STREET AURORA, ILLINOIS | CLIENT | ESM CIVIL SOLUTIONS, LLC 1315 MACOM DRIVE, SUITE 205 NAPERVILLE, ILLINOIS 60564 | |
| NO. | | REVISIONS | | |

COMPASS SURVEYING LTD
 ALTA SURVEYS • TOPOGRAPHY • CONSTRUCTION STAKING
 2631 GINGER WOODS PARKWAY, STE. 100
 AURORA, ILLINOIS 60504
 PHONE: (630) 820-9100 FAX: (630) 820-7030 EMAIL: ADMIN@CUI.SURVEYING.COM

SCALE: 1" = 20'
2 OF 2
 PROJ. NO.: 16.0045