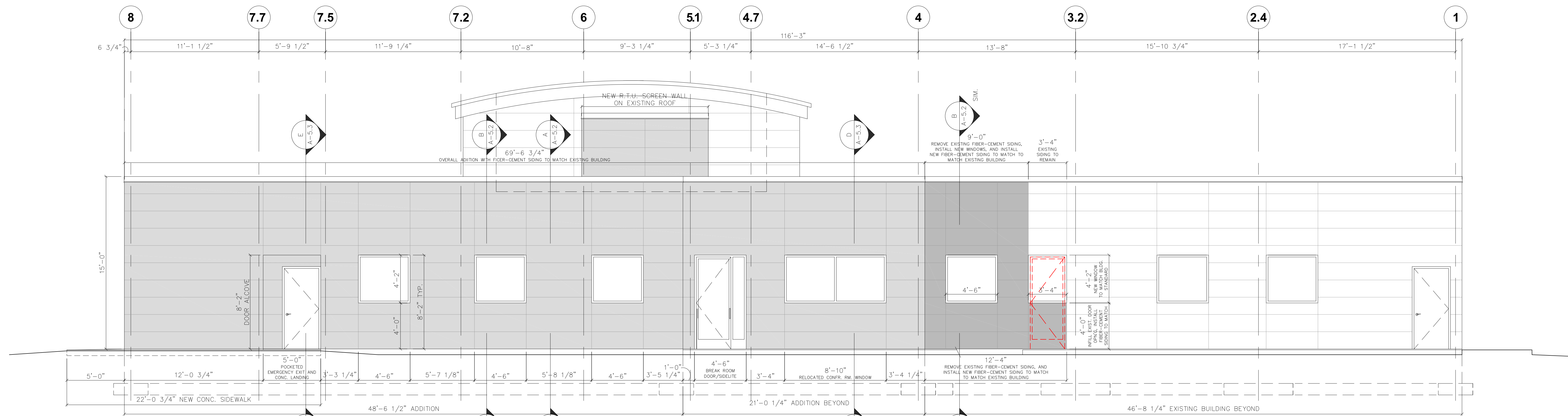
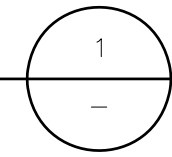


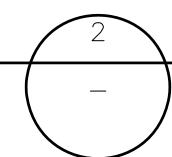
NORTH ELEVATION

SCALE: 1/4" = 1'-0"



WEST ELEVATION

SCALE: 1/4" = 1'-0"



NOTICE: THIS DRAWING IS THE SOLE PROPERTY OF RANDY B. PRUYN, NCARB, ALA. NO PART OF THIS DRAWING, INCLUDING THE DESIGN, CONSTRUCTION, OR ANY OTHER INFORMATION CONTAINED HEREIN, SHALL BE REPRODUCED OR TRANSMITTED IN ANY FORM OR BY ANY MEANS, WITHOUT THE WRITTEN PERMISSION OF RANDY B. PRUYN, NCARB, ALA.

NO.	DATE	REVISION DESCRIPTION
1	12-21-23	ISSUED FOR PERMIT
2	12-28-23	
3	1-13-24	
4	2-5-24	
5	2-8-24	

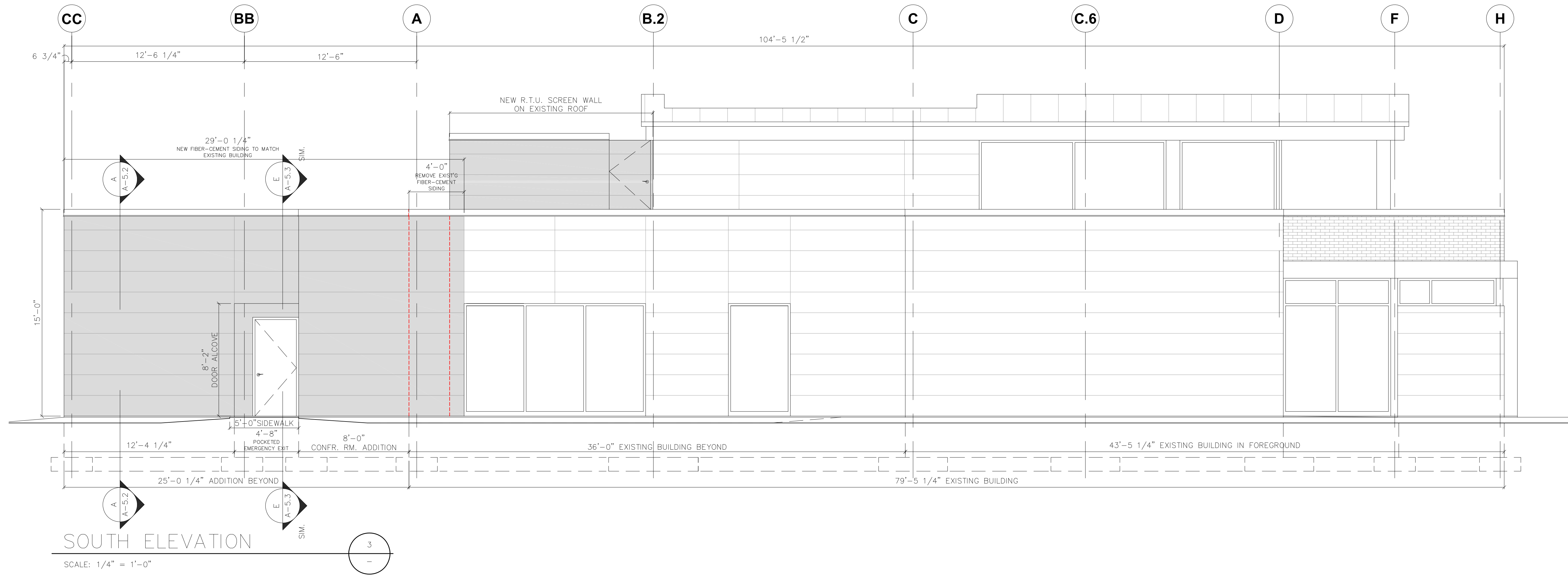
WATERLEAF WOMEN'S CENTER
505 W. WOOD STREET
AURORA, ILLINOIS 61804

EXTERIOR ELEVATIONS

SCALE:	1/4" = 1'-0"
DRAWN:	REP 12-21-23
CHECKED:	REP 3-1-24
APPD:	
FILE:	Waterleaf Women's Center_2023

PROJ. NO: 2332

DWG. NO: A-4.1



THIS DRAWING HAS NOT BEEN REVIEWED BY THE LOCAL PROPERTY OF THE ARCHITECT. THE ARCHITECT ASSUMES NO LIABILITY FOR THE CONSTRUCTION OF THE WORK SHOWN HEREON. THE ARCHITECT'S RESPONSIBILITY IS LIMITED TO THE DESIGN OF THE WORK SHOWN HEREON. THE ARCHITECT IS NOT RESPONSIBLE FOR THE CONSTRUCTION OF THE WORK SHOWN HEREON. THE ARCHITECT IS NOT RESPONSIBLE FOR THE CONSTRUCTION OF THE WORK SHOWN HEREON.

NO.	DATE	REVISION DESCRIPTION
1	2-8-24	ISSUED FOR BID
2	2-5-24	CHECK SET- ISSUED FOR REVIEW
3	1-13-24	REVISIONS PER WALK-THRU/FEEDBACK
4	12-28-23	ISSUED FOR ENGINEERING
5	12-21-23	ISSUED FOR REVIEW AND APPROVAL
6	3-1-24	ISSUED FOR PERMIT

WATERLEAF WOMEN'S CENTER
3000 W. WILSON STREET
AURORA, ILLINOIS 61904

EXTERIOR ELEVATIONS

SCALE: 1/4" = 1'-0"	FILE: Waterleaf Women's Center_202
DRAWN: RBP 12-21-23	
CHKD: RBP 3-1-24	
APPD:	
FILE:	