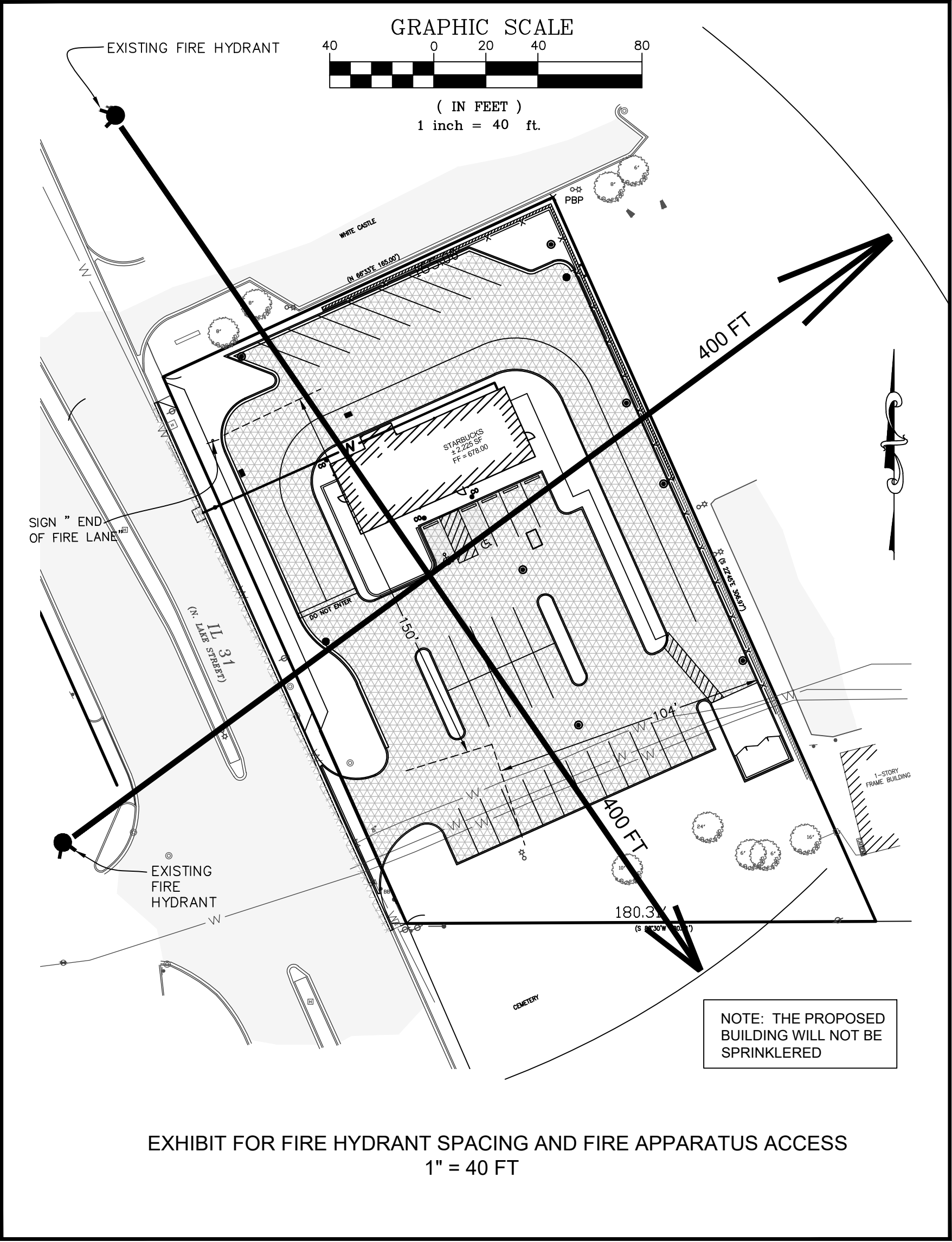
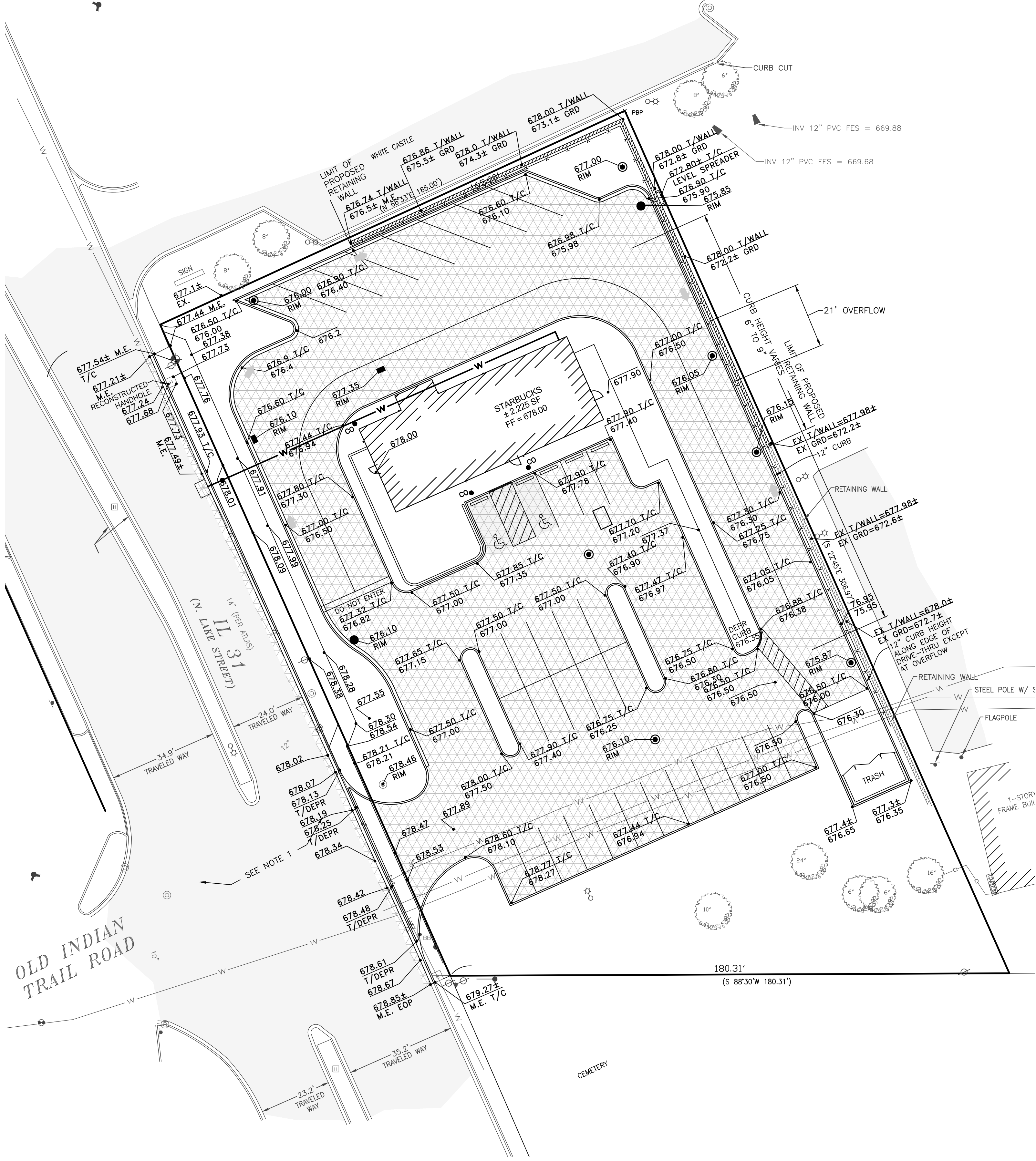


FIRE ACCESS PLAN – 1165 N. LAKE STREET

FOR:
GLAZIER PROJECT LLC
1406 W. FULTON STREET, SUITE A2
CHICAGO, ILLINOIS 60607



FIRE ACCESS PLAN DATA TABLE	
a.) BUILDING HEIGHT	23.6 FEET
b.) SQUARE FOOTAGE OF BUILDING	2,225 SQ FT
c.) NON SPRINKLERED. GENERAL CONTRACTOR SHALL FURNISH AND INSTALL FIRE ALARM SYSTEMS PER TENANT DOCUMENTS IF REQUIRED BY CODE.	
d.) THE PROPOSED BUILDING WILL BE A STARBUCKS RESTAURANT.	

GRAPHIC SCALE
(IN FEET)
1 inch = 20 ft.

LEGEND

EXISTING		PROPOSED
—	UNDERDRAIN	—
—	SANITARY SEWER	—
—	STORM SEWER	—
—	WATER MAIN	—
—	FENCE	—
—	GAS	—
—	TELEPHONE	—
—	ELECTRIC	—
—	OVERHEAD WIRES	—
—	FLARED END	—
—	MANHOLE	—
—	INLET	—
—	CATCH BASIN	—
—	CLEANOUT	—
—	SANITARY SERVICE	—
—	SUMP CONNECTION	—
—	WATER VALVE	—
—	VALVE VAULT	—
—	HYDRANT	—
—	WATER SERV. W/B-BOX	—
—	PIPE CAP	—
—	UTILITY POLE	—
—	STREET LIGHT	—
—	UTILITY POLE WITH LIGHT	—
—	GAS VALVE	—
—	SIGN	—
—	WELL	—
—	STORM STRUCTURE NUMBER	—
—	SANITARY STRUCTURE NUMBER	—
—	LANDSCAPE AREA	—
—	BARRIER CURB	—
—	B-6.12 CURB	—
—	HANDICAP RAMP	—
—	CONCRETE DRIVEWAY / SIDEWALK	—
—	BITUMINOUS PAVEMENT	—
—	AGGREGATE PAVEMENT	—
—	GRASS	—
—	SIDEWALK RAMP	—

C:\USERS\SUBALA\ONEDRIVE\DESKTOP\19276-AURORA\DWG\19276 FIRE ACCESS-8-3-21.DWG 8/5/2021 11:45 AM