

Exhibit "B"

LEGAL DESCRIPTION:

THAT PART OF THE WEST HALF OF SECTION 29, TOWNSHIP 38 NORTH, RANGE 8 EAST OF THE THIRD PRINCIPAL MERIDIAN DESCRIBED AS FOLLOWS: ALL THAT PART OF JERICO ROAD LYING WITHIN THE CORPORATE LIMITS OF THE VILLAGE OF MONTGOMERY, LYING BETWEEN THE WEST LINE OF SAID SECTION 29 AND THE EAST LINE OF NICKELS COUNTRY SUBDIVISION, IN KANE COUNTY, ILLINOIS.

PARCEL CONTAINS 1.24 ACRES MORE OR LESS

PLAT OF DISCONNECTION

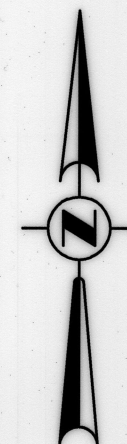
FROM THE
VILLAGE OF MONTGOMERY
KANE COUNTY, IL



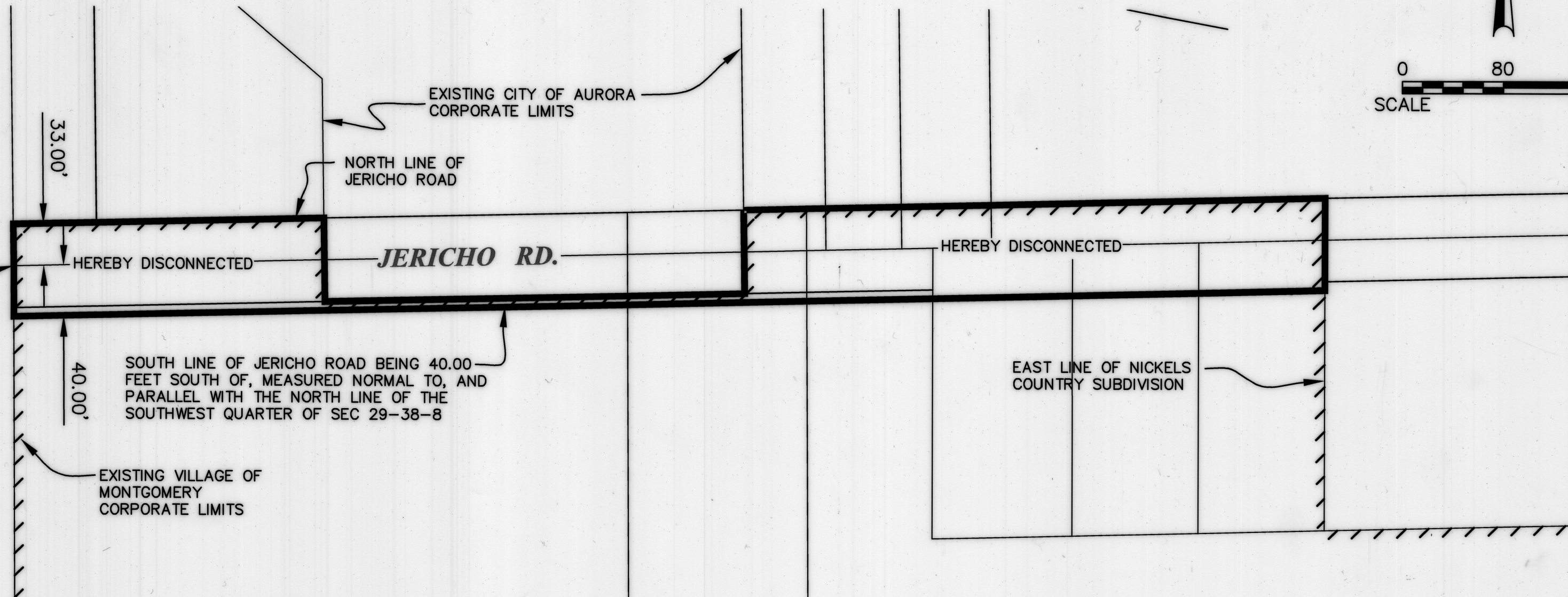
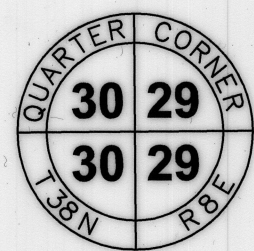
2023K016547

Sandy Wegman
RECORDER - KANE COUNTY, IL

RECORDED: 5/24/2023 09:07 AM
REC FEE: 74.00
PAGES: 14



0 80 160
SCALE FEET



COUNTY CLERK'S CERTIFICATE

STATE OF ILLINOIS)
COUNTY OF KANE)ss

I, John A. Cunningham, COUNTY CLERK OF KANE COUNTY, ILLINOIS, DO HEREBY CERTIFY THAT THERE ARE NO UNPAID VILLAGE OF MONTGOMERY TAXES OR VILLAGE OF MONTGOMERY ASSESSMENTS AGAINST ANY OF THE LAND DESCRIBED HEREIN.

THE PERMANENT INDEX NUMBERS OF THE LAND, PARTS OF WHICH ARE INCLUDED IN THIS PLAT OF DISCONNECTION ARE:

THERE ARE NO PIN'S ASSOCIATED WITH THE DISCONNECTED AREA. ALL AREA IS WITHIN RIGHT OF WAY.

GIVEN UNDER MY HAND AND SEAL OF THE COUNTY CLERK AT GENEVA,

ILLINOIS, THIS 24th DAY OF MAY, 2023.

John A. Cunningham
COUNTY CLERK



STATE OF ILLINOIS)
COUNTY OF KANE)ss

THIS IS TO CERTIFY THAT THE ABOVE PLAT CORRECTLY REPRESENTS THE TERRITORY DISCONNECTED FROM THE VILLAGE OF MONTGOMERY, KANE COUNTY, ILLINOIS.

APPROVED BY THE BOARD OF TRUSTEES ON APRIL 24th, 2023.

BY: Mark T. Bay
PRESIDENT

ATTEST: Debra Buchanan
VILLAGE CLERK



STATE OF ILLINOIS)
COUNTY OF KANE)ss

THIS IS TO CERTIFY THAT I, THE UNDERSIGNED, AN ILLINOIS PROFESSIONAL LAND SURVEYOR, HAVE PREPARED THIS PLAT FOR THE PURPOSE OF DISCONNECTION FROM THE VILLAGE OF MONTGOMERY, AND THAT THIS PLAT OF DISCONNECTION ACCURATELY DEPICTS SAID PROPERTY.

GIVEN UNDER MY HAND AND SEAL THIS 20th DAY OF APRIL, 2023.

Mark G. Scheller
MARK G. SCHELLER
PROFESSIONAL LAND SURVEYOR #3581
(EXPIRES 11-30-24)



Engineering Enterprises, Inc.
CONSULTING ENGINEERS
52 Wheeler Road
Sugar Grove, Illinois 60554
630.466.6700 / www.eeiweb.com

VILLAGE OF MONTGOMERY
200 N. RIVER STREET
MONTGOMERY, ILLINOIS 60538

			DATE:	APRIL 20, 2023
			PROJECT NO.	M01403
			FILE NO M01403-PLAT OF DISCONNECT-	
			PAGE 1 OF 1	
NO.	DATE	REVISIONS		