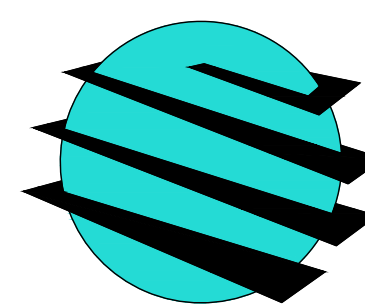


AURORA POLICE DEPARTMENT PARKING STRUCTURE 2024 MAINTENANCE REPAIRS

AURORA, ILLINOIS

PROJECT No.: 31-009419.20

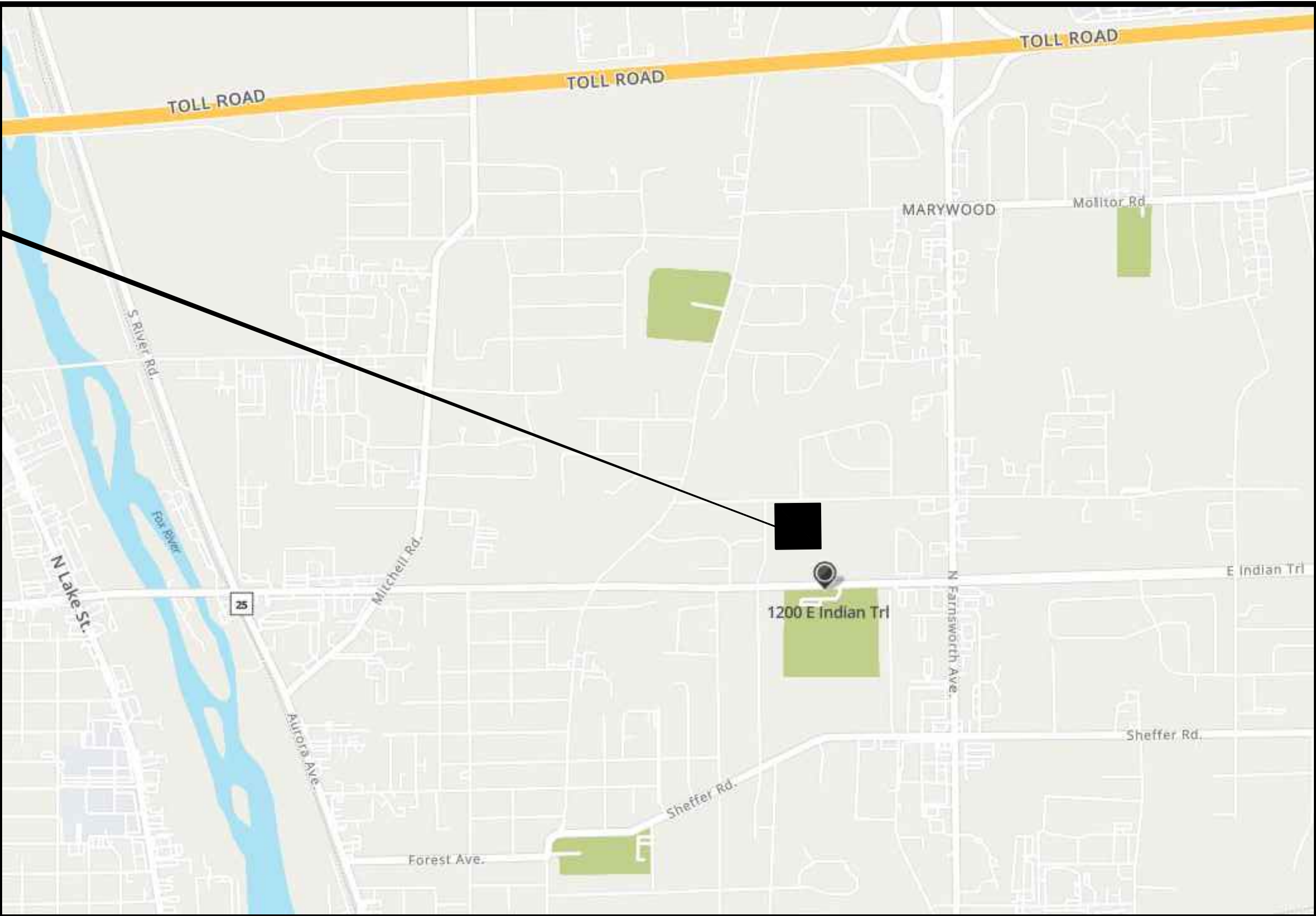


WALKER
CONSULTANTS

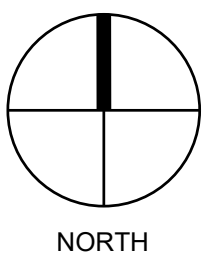
2895 Greenspoint
Suite 600
Hoffman Estates, IL 60169
847.697.2640 Ph
www.walkerconsultants.com

R-000	COVER SHEET
R-001	GENERAL NOTES, WI SCHEDULE & LEGEND
R-101	LOWER LEVEL PLAN
R-102	LOWER LEVEL REFLECTED CEILING PLAN
R-103	UPPER LEVEL PLAN
R-501	REPAIR DETAILS

PROJECT SITE:
1200 E INDIAN TRAIL ROAD
AURORA, IL 60505



LOCATION MAP



RELEASED FOR BIDS
AUGUST 4, 2024

J:\CHICAGO\31-0094\19-20-AURORA_POLICE_STATION PS CDS. BID & ESDC\DRAWINGS\DRAWINGS\9419R-001.DWG 7/31/2024 10:52:32 AM MORGAN, JOHN

GENERAL NOTES

A. CONSTRUCTION

- This set of Construction Documents is for waterproofing and structural repair only. There are no changes to use, egress, occupancy, or area.
- The Contractor shall obtain all necessary permits to complete the work outlined in these documents.
- The Contractor shall perform Work in accordance with all applicable Federal, State, and Local Codes, Laws and Ordinances. The Contractor shall promptly notify the Engineer of any known nonconformity with the intent of the Construction Documents and as-built conditions to the applicable Codes, Laws or Ordinances and request clarification from the Engineer prior to proceeding with Work which is deemed in conflict with the applicable Codes, Laws or Ordinances.
- The project shall be completed in accordance with the 2021 International (Existing) Building Code.
- Fire Safety during construction, alteration or demolition shall comply with the latest edition of NFPA 1.
- Prior to preparing the bid and fabrication of any material or placement of concrete, field verify all existing dimensions and conditions shown on Drawings. Report all discrepancies to the Engineer immediately.
- Do Not Scale Drawings.
- Walker will not have control over or charge of and will not be responsible for construction means, methods, techniques, sequences, or procedures, or for safety precautions and safety programs in connection with the project. Since these are the responsibility of others, Walker will not be responsible for the contractor's schedules or failure to carry out the project in accordance with Contract Documents. Walker will not have control over or charge of acts or omissions of the contractor, sub-contractors, or their agents or employees, or of other non-Walker persons performing portions of the project.
- The presence of Walker or testing agency at the jobsite does not relieve contractor of the obligation to perform the work in accordance with the contract documents.

B. CONSTRUCTION DOCUMENTS

- Construction Documents entitled "AURORA POLICE DEPARTMENT PARKING STRUCTURE MAINTENANCE REPAIRS" includes these Drawings and separately bound Specifications. For purposes of performing the work, Drawings and Specifications shall be a single unit.
- The extent of repair areas shown on the drawings indicates Engineer's estimates only. The estimated unit quantities included in the bid documents are based on Engineer's estimated units for bid purposes only. The Contractor is responsible for determining the actual extent and locations of repair areas. The actual repair quantities shall be verified and agreed upon by the Engineer prior to commencing the repair Work.
- Work shall be performed in coordination with construction observations by the Engineer to determine if the exposed existing construction is as assumed in the design.
- Dimensions shown on plans are based on original construction documents.
- Refer to Specifications for scope, description, and requirements of Work.

C. EXISTING STRUCTURE

- Design Live Loads for the Existing Structure were assumed to be (all loads are service loads unless noted)

DESCRIPTION	LOAD
a. Floors	40 psf
b. Floors (Roof)	50 psf
c. Concentrated Wheel Load (4.5 in x 4.5 in area)	3000 lb
d. Slabs on Grade	40 psf
- To the Engineer's knowledge, no outstanding environmental concerns are present on site. If an outstanding environmental concern is identified during construction, the Contractor is to bring this to the attention of the Engineer and Owner.
- It is the Contractor's responsibility to familiarize itself with the original construction drawings (if available) for the Work areas. All significant deviations are to be brought to the attention of the Engineer.

D. EXISTING SERVICES AND UTILITIES

- Contractor shall review all existing conditions to determine all Electrical and Mechanical services and Utilities affected by the repair work. Make necessary temporary connections to maintain existing services to all areas affected by the work. The Contractor shall submit the methods and schedule of connections for the Owner's approval prior to commencement.
- Provide a minimum 5 business days' notice to the Owner representative prior to any interruptions in utility services.
- Contractor shall take all precautions necessary to avoid cutting/damaging utilities. If utility is damaged as result of construction operations, notify Owner and Engineer immediately. Utility damages by construction operation shall be repaired by contractor at no cost to the Owner. Damaged utility that is not a result of construction operations shall be paid for by Owner.

E. DETAILS AND SYMBOLS

- Repair details are shown on drawing series R-501 and are generally identified as two-digit (X-X) details.
- Three-digit repair details (X-X-X) do not represent a separate price item unless noted otherwise. These details supplement the basic detail to provide additional information or show variation of the typical condition. See legend for clarification on drawing notations.
- Where the Work Item bubble is noted "TYP," it means the Work Item occurs at all locations where the applicable deterioration or designation symbol occurs on that plan.
- Where "TAR" is noted, it means there may be areas of this work in addition to the particular designated areas.
- Where two or more Work Item Bubbles are grouped together, it means any or all of the referenced work items may be applicable. Coordination of Work Items is Contractor's responsibility.
- When a Work Item or Detail is listed as incidental, it means it is included in the pay unit of other work items and does not have a separate price.
- When a Detail is labeled (FOR REFERENCE ONLY) it provides information only about incidental work and does not have a pay unit.
- Contractor is responsible for determining actual extent and locations of repair areas in accordance with the specifications. Work Item is shown only to represent the types of deterioration.
- See Work Item specification (02 00 10) for additional information regarding details.

F. SHORING AND BRACING

- Contractor shall provide all shoring, bracing, sheeting, etc. required for safety and proper execution of the work.
- Contractor is solely responsible to prepare shop drawing for bracing and shoring members designed and stamped/sealed by a registered professional engineer (registered in State of Illinois) and submit them to the Engineer for record.
- The design of the shoring and bracing members shall include all changes in the structure caused by the shoring and bracing.

G. CONSTRUCTION PHASING, SEQUENCING AND TRAFFIC MAINTENANCE

- Work sequence shall be coordinated with the Owner's representative and all identified project representatives.
- Owner will continue to use structure during restoration. Contractor must phase and arrange work to maintain access at all times to all areas that are not under construction for both vehicles and pedestrians.
- Work hours are 8 am - 6 pm, Monday - Friday. The Contractor shall verify work hours with the Owner. Contractor shall coordinate off-hours, weekend, and holiday Work with Owner at least 72 hours in advance.
- The number of spaces that may be out of service at one time shall be coordinated with the owner/garage operator.
- The contractor shall provide unobstructed pedestrian access (protected when necessary) to all emergency egress stairs at all times. The contractor shall install and maintain signage that clearly directs patrons to and from these destinations. The contractor shall provide and maintain temporary lighting for these paths in the event the garage lighting is blocked or reduced by project related work.
- It shall be the Owner's responsibility to clear work area of vehicles. The contractor shall work in unison with the clearing operation to capture the areas by incrementally installing barricades to prevent vehicles from reentering the area as it is cleared. In addition, temporary signage shall be installed and adjusted by the contractor during the work zone capture effort. Note that new areas cannot be captured prior to work zones or portions thereof being returned to service so that the maximum limit for spaces out of service shall not be exceeded. Allow 7 days between returning parking spaces to service and occupying an equal number of spaces for the next phase of work.
- Barricades shall be of sufficient construction to prevent inadvertent access by patron vehicles and pedestrians. The barricades can be incorporated into the work zone protection that are intended to prevent the escape of dust and other debris from the work zone.
- Contractor shall be responsible to lockout stair access into areas under construction to prevent unauthorized patron access. Doors shall be sealed off to prevent airborne dust from entering stairways and elevator shafts. Access shall comply with all egress and fire safety requirements.
- The phasing concepts contained in these documents are intended to indicate reasonable scenarios for phasing the work. Not all information required for contractor phasing submittals are included in these concepts and they do not include all challenges that will be present in performing this project in a phased manner.
- Work zone shall not be returned to service if hazardous conditions are present.
- Do not return areas to service unless existing striping affected by work has been restored or new striping has been applied.

H. WORKSITE REQUIREMENTS

- The Contractor is responsible for the collection and removal of all construction debris on a daily basis, and the site shall be left in a neat and orderly condition, satisfactory to the Owner.
- The Contractor is responsible for protecting all adjacent structures, landscaping, and other surfaces and items which could be affected by the Work.
- All concrete spatter created during construction and construction debris shall be removed from all existing and new components.
- All lights, signs, and other features and property including customer vehicles damaged during construction shall be replaced / repaired at no cost to Owner.
- Any painted/stained elements damaged by any construction activities shall be restored/painted/stained to match pre-construction condition.
- Do not place loads on the structure or store demolished materials on the structure in a manner that will surpass design loads.
- All construction materials kept in elevated surface areas shall remain secured to ensure the materials do not become airborne and cause injury or damage to the building or its occupants.
- Areas that are not directly under construction that are used as pathways to transport materials, or to remove trash, are to be kept clean at all times. This maintenance includes, but not limited to dusting, sweeping, mopping, and picking up trash as required to keep the areas free of waste materials, debris, and rubbish.

I. UNIT PRICE WORK QUANTITY ADMINISTRATION

- Contractor is responsible for maintaining accurate documentation and submission in a timely fashion of measured repair quantities for all Unit Price Work.
- For Unit Price Work Items, Contractor shall maintain a Record Drawing showing the general location, size, and associated Work Item of each repair. Record Drawing shall include repair quantity for each repair location or be keyed to a spreadsheet/quantity documentation sheet with the quantities.
- For each repair location, repair quantities shall be measured to the nearest inch in all applicable directions, the precise pay unit quantity dimension determined, and then rounded up to the nearest whole pay unit increment (square foot, lineal foot, etc.).
- Contractor shall provide Record Drawing and Quantities to Engineer prior to each concrete placement and/or work phase, or at minimum, with each application for Payment. Engineer will generally verify measurements and quantities to the extent the engineer deems appropriate.
- See section 02 00 10 "Work Items" for additional administration requirements for each specific Work Item.

J. MISCELLANEOUS CONCRETE SITE REQUIREMENTS

- The following requirements apply to concrete and asphalt sawcutting and other similar work (cutting, grinding, drilling, etc):
 - Discharge of water, dust, or debris from concrete work to storm or sanitary is prohibited.
 - Storm drains must be protected from dust and debris.
 - Any water used during concrete work (including sweeping and sawcutting) must be contained and collected for proper disposal. Suggested controls include wet vacuum, absorbents.
 - Good housekeeping practices must be employed at the jobsite. Minimize dust. In addition to meeting local regulations, the following requirements apply to concrete washout areas:
 - Do not discharge concrete washout into storm drains, catch basins, or to the sanitary sewer system. Perform washing of concrete trucks in designated areas or offsite.
 - Designated areas shall be clearly labeled and be a pit or impermeable container that is a barrier to run off of wastewater/materials and prevents seepage into the ground. Place designated areas a minimum of 50 feet from storm drains, bodies of water, and ditches.
 - Once concrete washout has hardened, break up and dispose of properly. Disposal of hardened concrete should occur on a regular basis.
 - Washout facilities must be cleaned, or new facilities provided once the washout area is 75% full.
 - Cover all existing drains in and below repair area with filter fabric.
- The following requirements apply to waste disposal:
 - Wash water, paints, solvents, & other chemicals, including chemical and solvent mixtures, residues, contaminated rags, and containers, should be evaluated for proper disposal. If the waste is regulated, appropriate and legal disposal must be arranged.
 - Disposal/discharge of wash waters, cleaners, etc. into storm drain is prohibited.

K. GENERAL CONCRETE REQUIREMENTS

- PREPACKAGED REPAIR MATERIAL (03 37 50)
Compressive Strength 5000 psi at 28 DAYS
- MISCELLANEOUS REQUIREMENTS
 - Engineer shall be notified a minimum of 24 hours for observation of prepared concrete surfaces.
- CONCRETE PROTECTION FOR REINFORCEMENT
 - The following applies for full section replacement where shown on drawings.
 - The minimum concrete protection for reinforcement shall be per the latest adopted edition of ACI 318.
 - For pre-stressed and non pre-stressed reinforcement in pre-stressed/pre-cast concrete members, the minimum concrete protection at top of members shall be 1-1/2 in.
 - Minimum cover for reinforcing in non pre-stressed concrete and non post-tensioned members.

	Minimum Concrete Cover (inches)
a. Slab top reinforcement	1-1/2
b. Slab bottom reinforcement	3/4
c. Beam top reinforcement, Unless Noted	3"
d. Beam stirrups at sides and bottom of beam	1-1/2
e. Beam stirrups at top of beam	2-1/2
f. Column ties	1-1/2

* Or 3x bar diameter, whichever is greater.

M. EPOXY COATING FOR REINFORCEMENT AND ANCHORS

- Epoxy coat all reinforcement exposed within repair areas, except welded wire reinforcement used within repair areas.

N. STRUCTURAL STEEL

- | | FY, psi | ASTM |
|--|---------|------|
| 1. Structural Shapes | | |
| a. M-shapes, S-shapes, HP-shapes, channels, angles | 36,000 | A36 |
| 2. Bolts | | |
| a. 1/2" dia. to 1" dia., Unless | 92,000 | A325 |

O. POST-INSTALLED ANCHORS

- Expansion Anchors - Hilti Kwik Bolt III, Unless noted.
- Adhesive Anchors - Hilti HY200, Unless noted.
- Contractor shall locate existing embedded reinforcement using non-destructive testing prior to fabrication of attachments or drilling of holes. Notify Engineer of obstructions that will prevent installation of anchors at design locations.
- Post-installed Anchors must be installed using the spacing and edge distances given on the plans or details. If field conditions dictate that the anchor spacing or edge distance be modified, the Contractor shall submit a field sketch to the Engineer for review prior to making any modifications.
- Post-installed anchor holes shall be drilled and cleaned per manufacturer's written instructions.
- Adhesive Anchors shall be installed by an ACI-CRSI Certified "Adhesive Anchor Installer."

P. ABBREVIATIONS

- | | | |
|---------------|---|----------------------------------|
| 1. APPROX | = | Approximately |
| 2. AGG | = | Aggregate |
| 3. BM | = | Beam |
| 4. BOT | = | Bottom |
| 5. OIP | = | Cast in Place |
| 6. CFV | = | Contractor Field Verify |
| 7. CJ | = | Construction Joint/Control Joint |
| 8. CLR | = | Clearance |
| 9. COL | = | Column |
| 10. CONC | = | Concrete |
| 11. CY | = | Cubic Yard |
| 12. DET | = | Detail |
| 13. EA | = | Each |
| 14. E.E. | = | Each End |
| 15. E.S. | = | Each Side |
| 16. EMBED | = | Embedment length |
| 17. EJ | = | Expansion Joint |
| 18. EXIST | = | Existing |
| 19. FIN | = | Finished |
| 20. FL | = | Floor |
| 21. IN | = | Inches |
| 22. INC | = | Incidental |
| 23. LF | = | Linear Foot |
| 24. LS | = | Lump Sum |
| 25. MAX | = | Maximum |
| 26. MIN | = | Minimum |
| 27. N/A | = | Not Applicable |
| 28. OC | = | On Center |
| 29. OCA | = | On Ceiling Above |
| 30. OH | = | Opposite Hand |
| 31. P/C | = | Precast |
| 32. PSF | = | Pounds Per Square Foot |
| 33. PSI | = | Pounds Per Square Inch |
| 34. REINF | = | Reinforcement |
| 35. REQD | = | Required |
| 36. SF | = | Square Foot |
| 37. SIM | = | Similar |
| 38. SOG | = | Slab on Ground |
| 39. SPEC | = | Specification |
| 40. SUPT | = | Supported |
| 41. T | = | Top |
| 42. TAR | = | Typical as Required |
| 43. TYP | = | Typical |
| 44. UN or UNO | = | Unless Noted Otherwise |
| 45. VIF | = | Verify in Field |
| 46. WI | = | Work Item |
| 47. WWR | = | Welded Wire Reinforcement |

WORK ITEM SCHEDULE

WORK ITEM	DESCRIPTION	UNITS	LOWER LEVEL	UPPER LEVEL	TOTAL
1.1	General Requirements	L.S.	1	1	1
3.1	Floor Repair	S.F.	-	20	20
3.4	Floor Repair - Curb	S.F.	-	5	5
3.5	Floor Repair - Lifting Loops	EA.	-	75	75
3.9	Tee Flange Strengthening	EA.	-	100	100
8.1	Tee Stem Repair	S.F.	5	-	5
8.4	Tee Flange Repair	S.F.	20	-	20
10.3	Expansion Joint - Elastomeric	L.F.	-	300	300
11.1	Seal Random Floor Cracks	L.F.	-	75	75
11.4	Tee-to-Tee Joint Sealant	L.F.	-	100	100
11.7	Cove Sealant	L.F.	-	25	25
16.1	Traffic Topping - Vehicular	S.F.	-	175	175
16.4	Traffic Topping - Tee Joints	S.F.	-	50	50

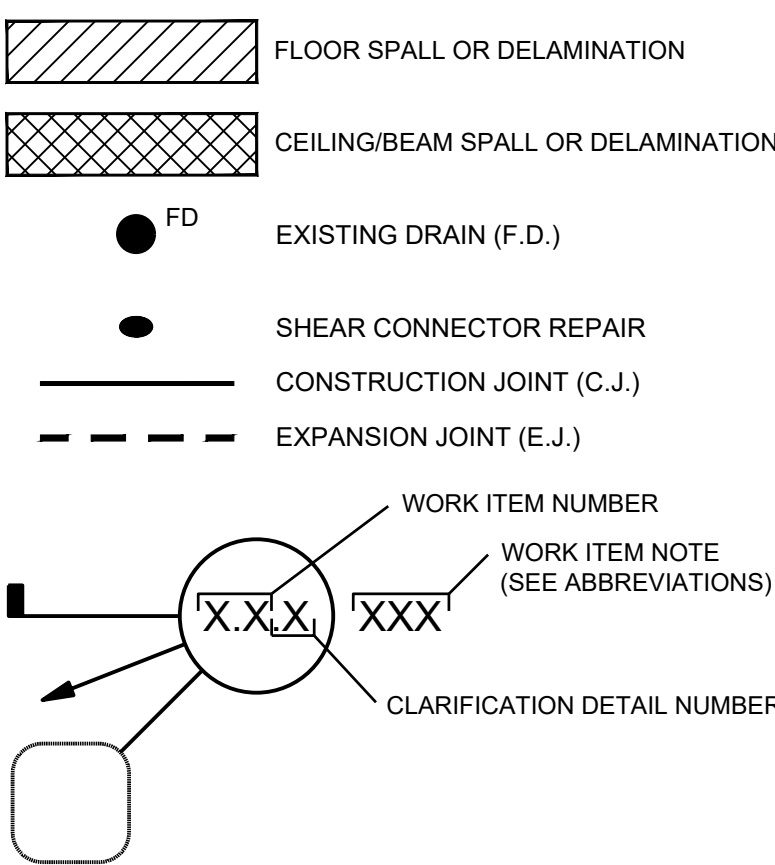


2895 Greenspoint Pkwy
Suite 600
Hoffman Estates, IL 60169
847.697.2640 Ph
www.walkerconsultants.com

AURORA POLICE DEPARTMENT
PARKING STRUCTURE
2024 MAINTENANCE REPAIRS

AURORA, ILLINOIS

LEGEND



NOTES:
1. NOT ALL WORK ITEMS HAVE DETAILS.
2. SEE SPECIFICATIONS FOR ADDITIONAL INFORMATION.

MARK	DATE	DESCRIPTION
ISSUE:	RELEASED FOR BIDS	
ISSUE DATE:	08/04/2024	
PROJECT NO:	31-009419.20	
DRAWN BY:	JAP	
CHECKED BY:	JSM	

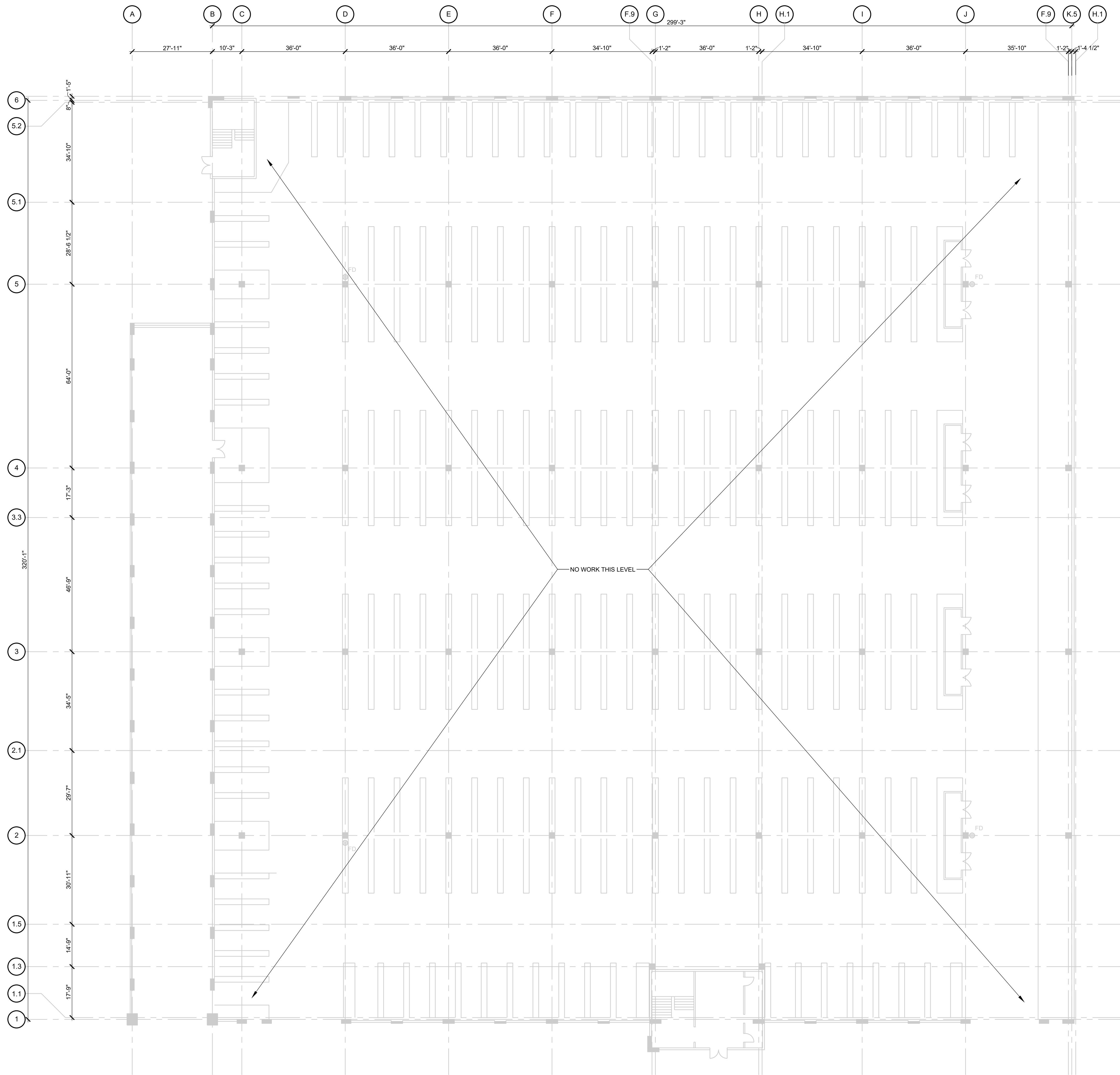
COPYRIGHT © 2024. ALL RIGHTS RESERVED.
NO PART OF THIS DOCUMENT MAY BE REPRODUCED IN ANY FORM OR BY ANY MEANS WITHOUT PERMISSION FROM WALKER CONSULTANTS.

SHEET TITLE:

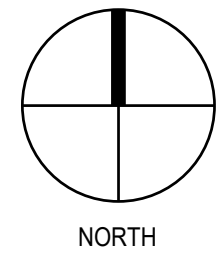
GENERAL NOTES,
W.I. SCHEDULE &
LEGEND

R-001

J:\CHICAGO\31-009419-20-AURORA_POLICE_STATION PS CDS, BID & ESD\DRAWINGS\DRAWINGS\9419R-101.DWG 7/31/2024 8:41:42 AM MORGAN, JOHN



1 LOWER LEVEL PLAN



SHEET NOTES

- REFERENCES:
- | | |
|-------------------|--------------|
| 1. GENERAL NOTES | R-001 |
| 2. FLOOR PLANS | R-100 SERIES |
| 3. REPAIR DETAILS | R-500 SERIES |

- NOTES:
- DIMENSIONS SHOWN ON PLANS ARE BASED ON ORIGINAL CONSTRUCTION DOCUMENTS. THE CONTRACTOR IS REQUIRED TO FIELD VERIFY ALL CONDITIONS. DO NOT SCALE DRAWINGS.
 - CONTRACTOR IS RESPONSIBLE FOR DETERMINING THE ACTUAL EXTENT AND LOCATIONS OF REPAIR AREAS IN ACCORDANCE WITH THE SPECIFICATIONS. WORK ITEM IS SHOWN ONLY TO REPRESENT THE TYPES OF REPAIRS.
 - DRAWINGS ARE BASED ON LIMITED INFORMATION. CONTRACTOR SHALL MAKE SUCH INVESTIGATIONS AS IT DEEMS NECESSARY IN ADVANCE OF BIDDING. CONTRACTOR SHALL PROMPTLY NOTIFY THE OWNER'S REPRESENTATIVE, IN WRITING, OF ANY DISCREPANCIES FOUND BETWEEN DRAWINGS AND FIELD CONDITIONS PRIOR TO SUBMISSION OF BID.
 - REFER TO SPECIFICATION SECTION 02 00 10 FOR DESCRIPTION OF WORK ITEMS.
 - THE CONTRACTOR SHALL REVIEW ALL EXISTING CONDITIONS TO DETERMINE ALL ELECTRICAL AND MECHANICAL SERVICES AND UTILITIES AFFECTED BY THE REPAIR WORK. ELECTRICAL CONDUITS AND LIGHT FIXTURES ARE TO BE MAINTAINED. MAKE NECESSARY TEMPORARY CONNECTIONS TO MAINTAIN SERVICES TO ALL AREAS OF THE PARKING STRUCTURE AFFECTED BY THE REPAIR WORK.
 - REFER TO SHEET R-001 FOR LEGEND, GENERAL NOTES AND W.I. SCHEDULE.
 - REFER TO SHEET R-501 FOR REPAIR DETAILS.



2895 Greenspoint Pkwy
Suite 600
Hoffman Estates, IL 60169
847.697.2640 Ph
www.walkerconsultants.com

AURORA POLICE DEPARTMENT
PARKING STRUCTURE
2024 MAINTENANCE REPAIRS

AURORA, ILLINOIS

LEGEND

- | | |
|--|---|
| | FLOOR SPALL OR DELAMINATION |
| | CEILING/BEAM SPALL OR DELAMINATION |
| | EXISTING DRAIN (F.D.) |
| | SHEAR CONNECTOR REPAIR |
| | CONSTRUCTION JOINT (C.J.) |
| | EXPANSION JOINT (E.J.) |
| | WORK ITEM NUMBER
WORK ITEM NOTE (SEE ABBREVIATIONS)
CLARIFICATION DETAIL NUMBER |
| | WORK ITEM IDENTIFICATION |

- NOTES:
- NOT ALL WORK ITEMS HAVE DETAILS.
 - SEE SPECIFICATIONS FOR ADDITIONAL INFORMATION.

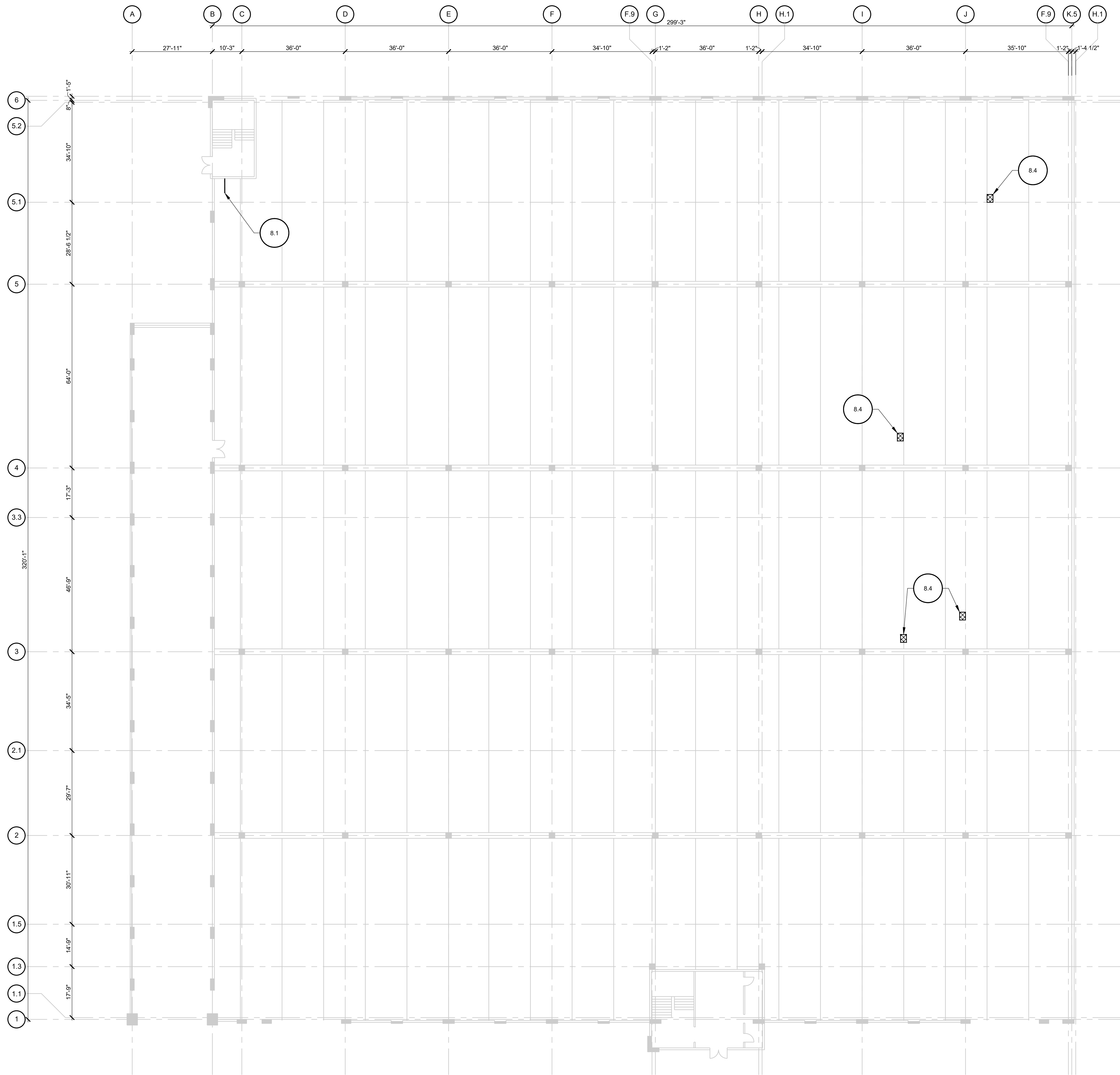
MARK	DATE	DESCRIPTION
ISSUE:	RELEASED FOR BIDS	
ISSUE DATE:	08/04/2024	
PROJECT NO:	31-009419.20	
DRAWN BY:	JAP	
CHECKED BY:	JSM	

COPYRIGHT © 2024. ALL RIGHTS RESERVED.
NO PART OF THIS DOCUMENT MAY BE REPRODUCED IN ANY FORM OR BY ANY MEANS WITHOUT PERMISSION FROM WALKER CONSULTANTS.

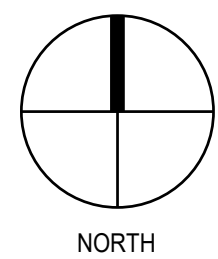
SHEET TITLE:
LOWER LEVEL
PLAN

R-101

J:\CHICAGO\31-009419-20-AURORA_POLICE_STATION PS CDS, BID & ESD\DRAWINGS\DRAWINGS\9419R-102.DWG 7/31/2024 8:41:36 AM MORGAN, JOHN



1 LOWER LEVEL REFLECTED CEILING PLAN



SHEET NOTES

- REFERENCES:
- | | |
|-------------------|--------------|
| 1. GENERAL NOTES | R-001 |
| 2. FLOOR PLANS | R-100 SERIES |
| 3. REPAIR DETAILS | R-500 SERIES |

- NOTES:
- DIMENSIONS SHOWN ON PLANS ARE BASED ON ORIGINAL CONSTRUCTION DOCUMENTS. THE CONTRACTOR IS REQUIRED TO FIELD VERIFY ALL CONDITIONS. DO NOT SCALE DRAWINGS.
 - CONTRACTOR IS RESPONSIBLE FOR DETERMINING THE ACTUAL EXTENT AND LOCATIONS OF REPAIR AREAS IN ACCORDANCE WITH THE SPECIFICATIONS. WORK ITEM IS SHOWN ONLY TO REPRESENT THE TYPES OF REPAIRS.
 - DRAWINGS ARE BASED ON LIMITED INFORMATION. CONTRACTOR SHALL MAKE SUCH INVESTIGATIONS AS IT DEEMS NECESSARY IN ADVANCE OF BIDDING. CONTRACTOR SHALL PROMPTLY NOTIFY THE OWNER'S REPRESENTATIVE, IN WRITING, OF ANY DISCREPANCIES FOUND BETWEEN DRAWINGS AND FIELD CONDITIONS PRIOR TO SUBMISSION OF BID.
 - REFER TO SPECIFICATION SECTION 02 00 10 FOR DESCRIPTION OF WORK ITEMS.
 - THE CONTRACTOR SHALL REVIEW ALL EXISTING CONDITIONS TO DETERMINE ALL ELECTRICAL AND MECHANICAL SERVICES AND UTILITIES AFFECTED BY THE REPAIR WORK. ELECTRICAL CONDUITS AND LIGHT FIXTURES ARE TO BE MAINTAINED. MAKE NECESSARY TEMPORARY CONNECTIONS TO MAINTAIN SERVICES TO ALL AREAS OF THE PARKING STRUCTURE AFFECTED BY THE REPAIR WORK.
 - REFER TO SHEET R-001 FOR LEGEND, GENERAL NOTES AND W.I. SCHEDULE.
 - REFER TO SHEET R-501 FOR REPAIR DETAILS.



2895 Greenspoint Pkwy
Suite 600
Hoffman Estates, IL 60169
847.697.2640 Ph
www.walkerconsultants.com

AURORA POLICE DEPARTMENT
PARKING STRUCTURE
2024 MAINTENANCE REPAIRS

AURORA, ILLINOIS

LEGEND

- | | |
|--|---|
| | FLOOR SPALL OR DELAMINATION |
| | CEILING/BEAM SPALL OR DELAMINATION |
| | FD
EXISTING DRAIN (F.D.) |
| | SHEAR CONNECTOR REPAIR
CONSTRUCTION JOINT (C.J.) |
| | EXPANSION JOINT (E.J.) |

- WORK ITEM IDENTIFICATION
- WORK ITEM NUMBER
WORK ITEM NOTE (SEE ABBREVIATIONS)
CLARIFICATION DETAIL NUMBER
1. NOT ALL WORK ITEMS HAVE DETAILS.
2. SEE SPECIFICATIONS FOR ADDITIONAL INFORMATION.

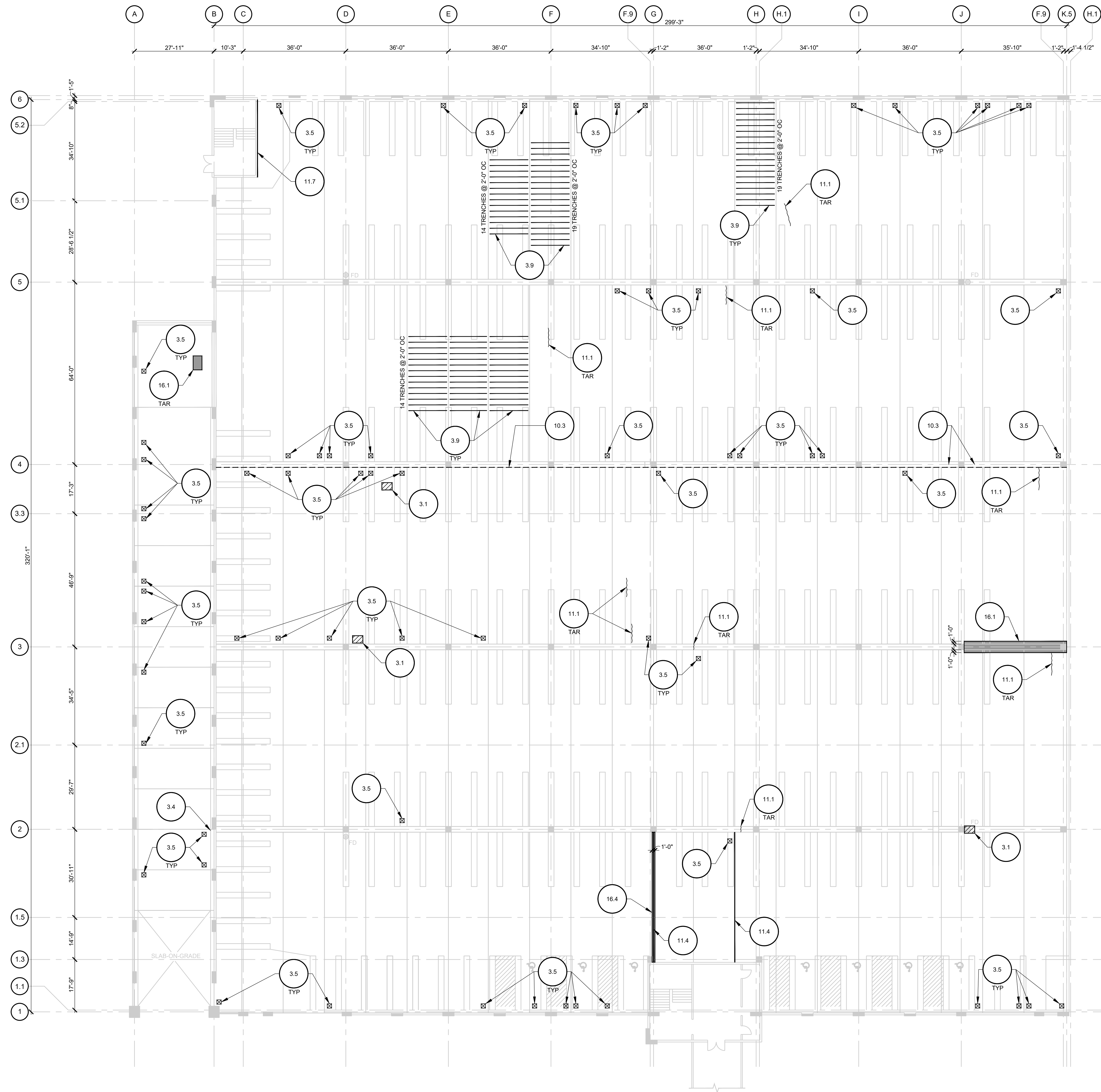
MARK	DATE	DESCRIPTION
ISSUE:	RELEASED FOR BIDS	
ISSUE DATE:	08/04/2024	
PROJECT NO:	31-009419.20	
DRAWN BY:	JAP	
CHECKED BY:	JSM	

COPYRIGHT © 2024. ALL RIGHTS RESERVED.
NO PART OF THIS DOCUMENT MAY BE REPRODUCED IN ANY FORM OR BY ANY MEANS WITHOUT PERMISSION FROM WALKER CONSULTANTS.

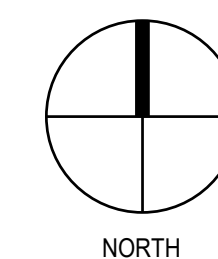
SHEET TITLE:
LOWER LEVEL
REFLECTED
CEILING PLAN

R-102

J:\CHICAGO\31-009419-20-AURORA_POLICE_STATION PS CDS. BID & ESD\DRAWINGS\DRAWINGS\9419R-103.DWG 7/31/2024 10:14:57 AM MORGAN, JOHN



1 UPPER LEVEL PLAN



SHEET NOTES

REFERENCES:
1. GENERAL NOTES R-001
2. FLOOR PLANS R-100 SERIES
3. REPAIR DETAILS R-500 SERIES

NOTES:
1. DIMENSIONS SHOWN ON PLANS ARE BASED ON ORIGINAL CONSTRUCTION DOCUMENTS. THE CONTRACTOR IS REQUIRED TO FIELD VERIFY ALL CONDITIONS. DO NOT SCALE DRAWINGS.
2. CONTRACTOR IS RESPONSIBLE FOR DETERMINING THE ACTUAL EXTENT AND LOCATIONS OF REPAIR AREAS IN ACCORDANCE WITH THE SPECIFICATIONS. WORK ITEM IS SHOWN ONLY TO REPRESENT THE TYPES OF REPAIRS.
3. DRAWINGS ARE BASED ON LIMITED INFORMATION. CONTRACTOR SHALL MAKE SUCH INVESTIGATIONS AS IT DEEMS NECESSARY IN ADVANCE OF BIDDING. CONTRACTOR SHALL PROMPTLY NOTIFY THE OWNER'S REPRESENTATIVE, IN WRITING, OF ANY DISCREPANCIES FOUND BETWEEN DRAWINGS AND FIELD CONDITIONS PRIOR TO SUBMISSION OF BID.
4. REFER TO SPECIFICATION SECTION 02 00 10 FOR DESCRIPTION OF WORK ITEMS.
5. THE CONTRACTOR SHALL REVIEW ALL EXISTING CONDITIONS TO DETERMINE ALL ELECTRICAL AND MECHANICAL SERVICES AND UTILITIES AFFECTED BY THE REPAIR WORK. ELECTRICAL CONDUITS AND LIGHT FIXTURES ARE TO BE MAINTAINED. MAKE NECESSARY TEMPORARY CONNECTIONS TO MAINTAIN SERVICES TO ALL AREAS OF THE PARKING STRUCTURE AFFECTED BY THE REPAIR WORK.
6. REFER TO SHEET R-001 FOR LEGEND, GENERAL NOTES AND W.I. SCHEDULE.
7. REFER TO SHEET R-501 FOR REPAIR DETAILS.

LEGEND

	FLOOR SPALL OR DELAMINATION
	CEILING/BEAM SPALL OR DELAMINATION
	EXISTING DRAIN (F.D.)
	SHEAR CONNECTOR REPAIR
	CONSTRUCTION JOINT (C.J.)
	EXPANSION JOINT (E.J.)
	WORK ITEM NUMBER
	WORK ITEM NOTE (SEE ABBREVIATIONS)
	CLARIFICATION DETAIL NUMBER
	WORK ITEM IDENTIFICATION

NOTES:
1. NOT ALL WORK ITEMS HAVE DETAILS.
2. SEE SPECIFICATIONS FOR ADDITIONAL INFORMATION.



2895 Greenspoint Pkwy
Suite 600
Hoffman Estates, IL 60169
847.697.2640 Ph
www.walkerconsultants.com

AURORA POLICE DEPARTMENT
PARKING STRUCTURE
2024 MAINTENANCE REPAIRS

AURORA, ILLINOIS

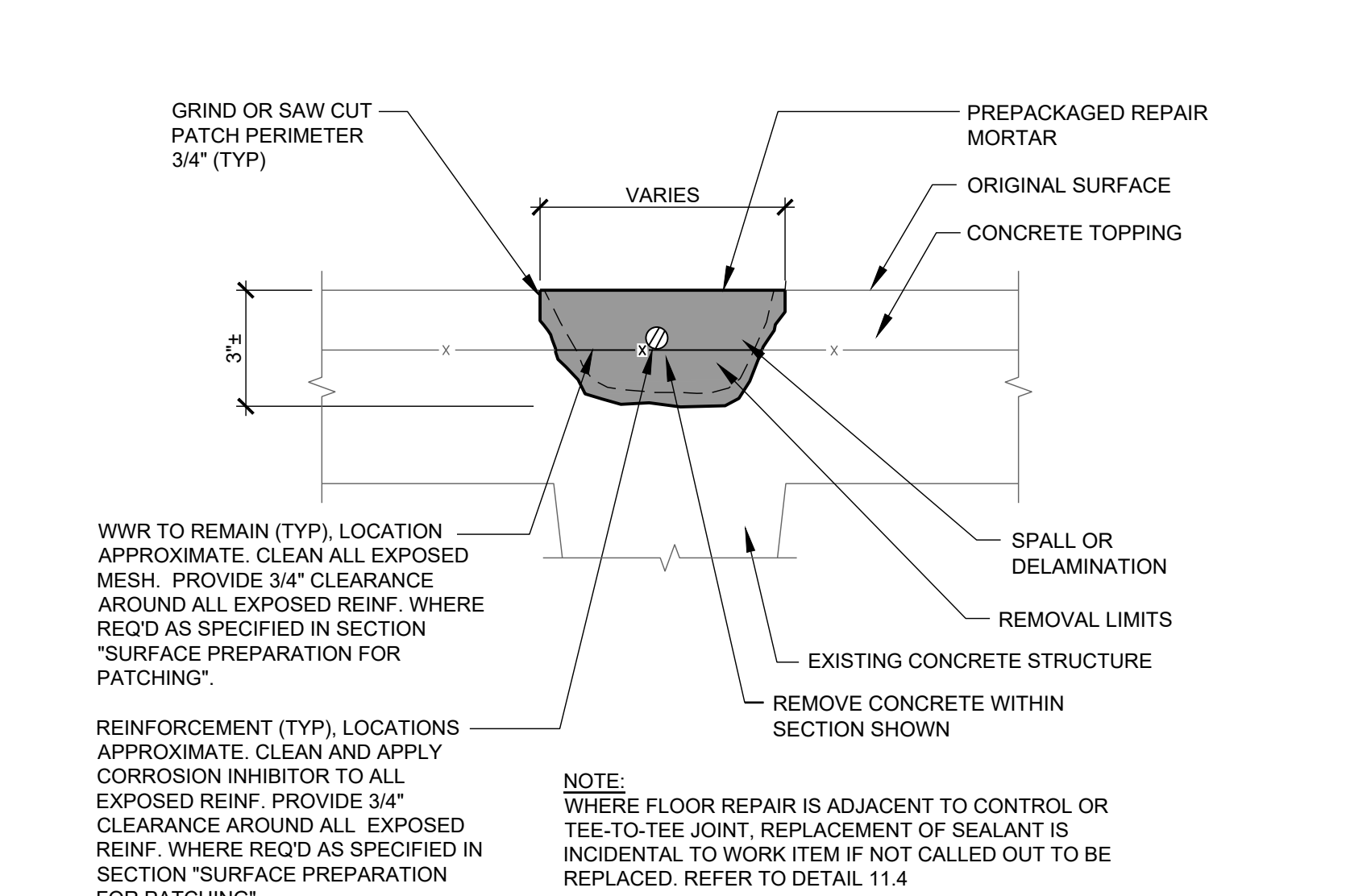
MARK	DATE	DESCRIPTION
ISSUE:	RELEASED FOR BIDS	
ISSUE DATE:	08/04/2024	
PROJECT NO:	31-009419.20	
DRAWN BY:	JAP	
CHECKED BY:	JSM	

COPYRIGHT © 2024. ALL RIGHTS RESERVED.
NO PART OF THIS DOCUMENT MAY BE REPRODUCED IN ANY FORM OR BY ANY MEANS WITHOUT PERMISSION FROM WALKER CONSULTANTS.

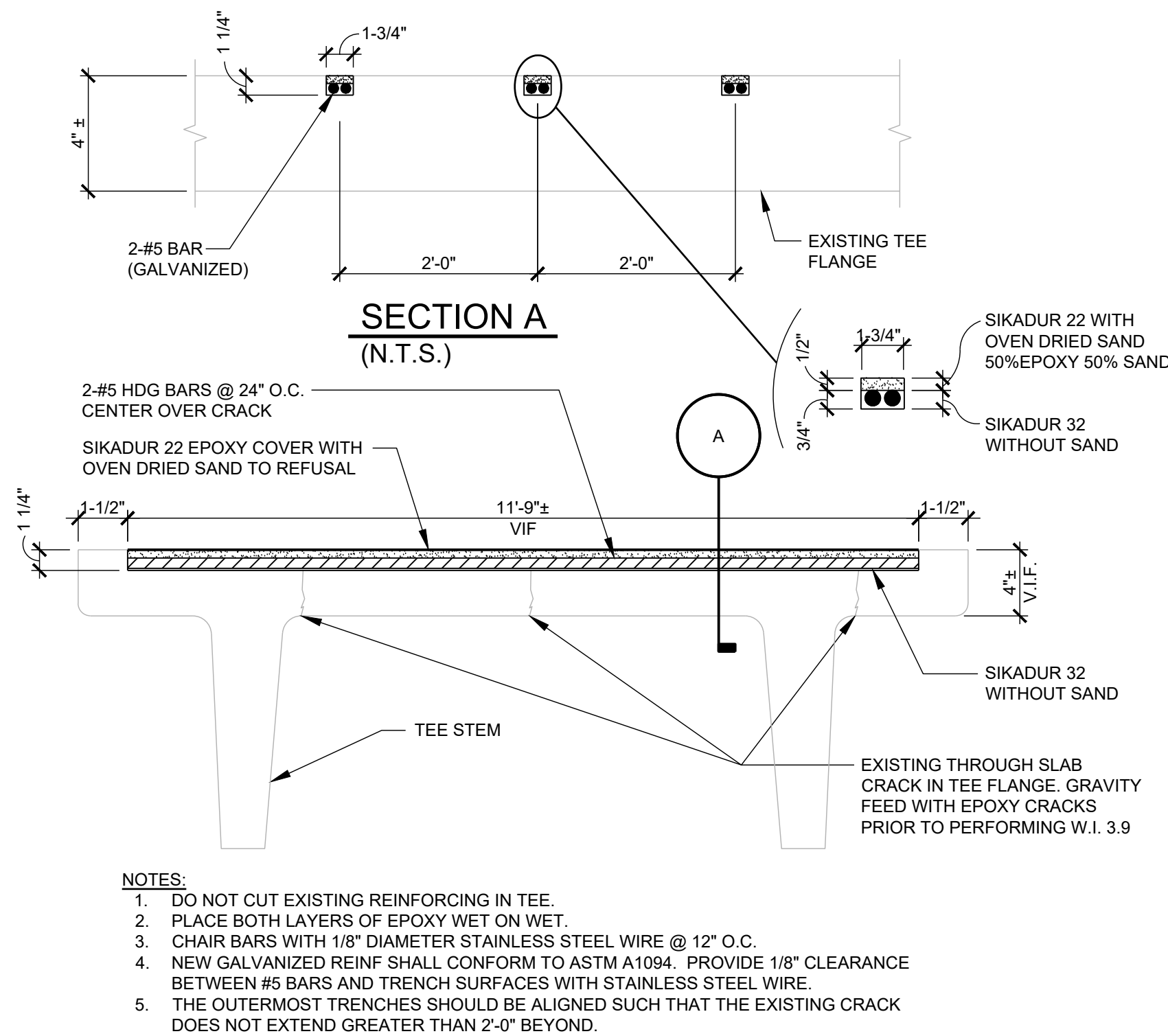
SHEET TITLE:
UPPER LEVEL
PLAN

R-103

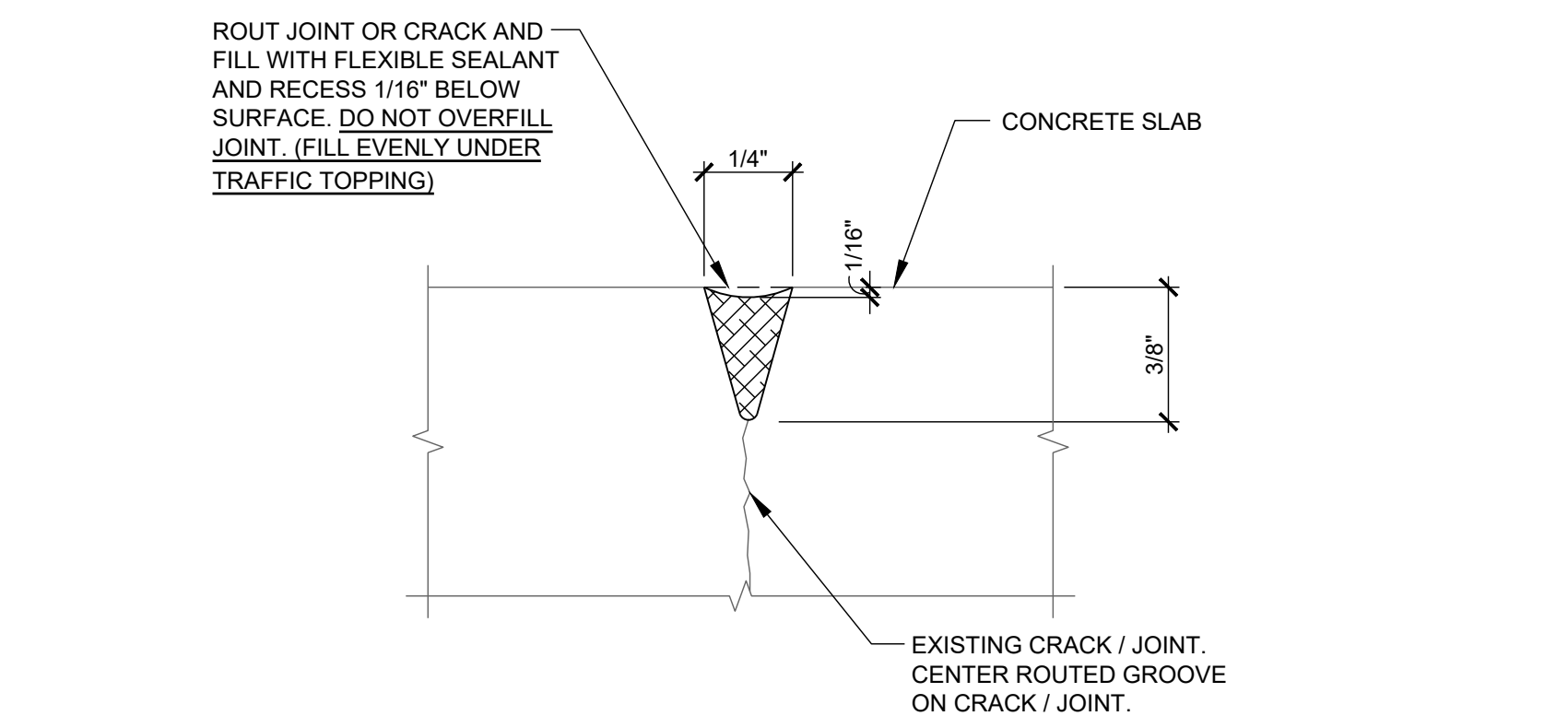
J:\CHICAGO\31-0094\19-20-AURORA_POLICE_STATION PS CDS. BID & ESD\DRAWINGS\DRAWINGS\9419R-501.DWG 7/31/2024 9:47:10 AM MORGAN, JOHN



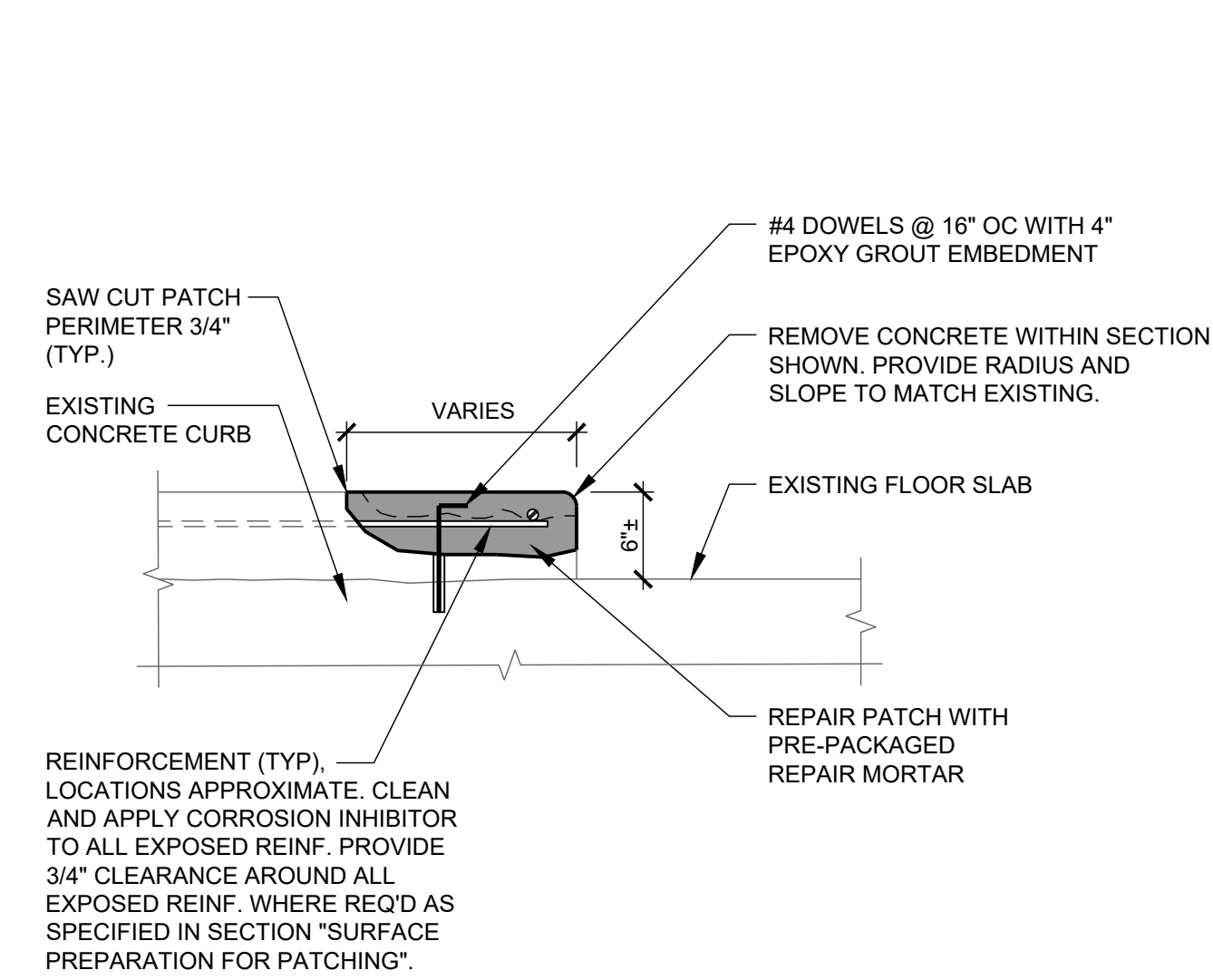
3.1 FLOOR REPAIR



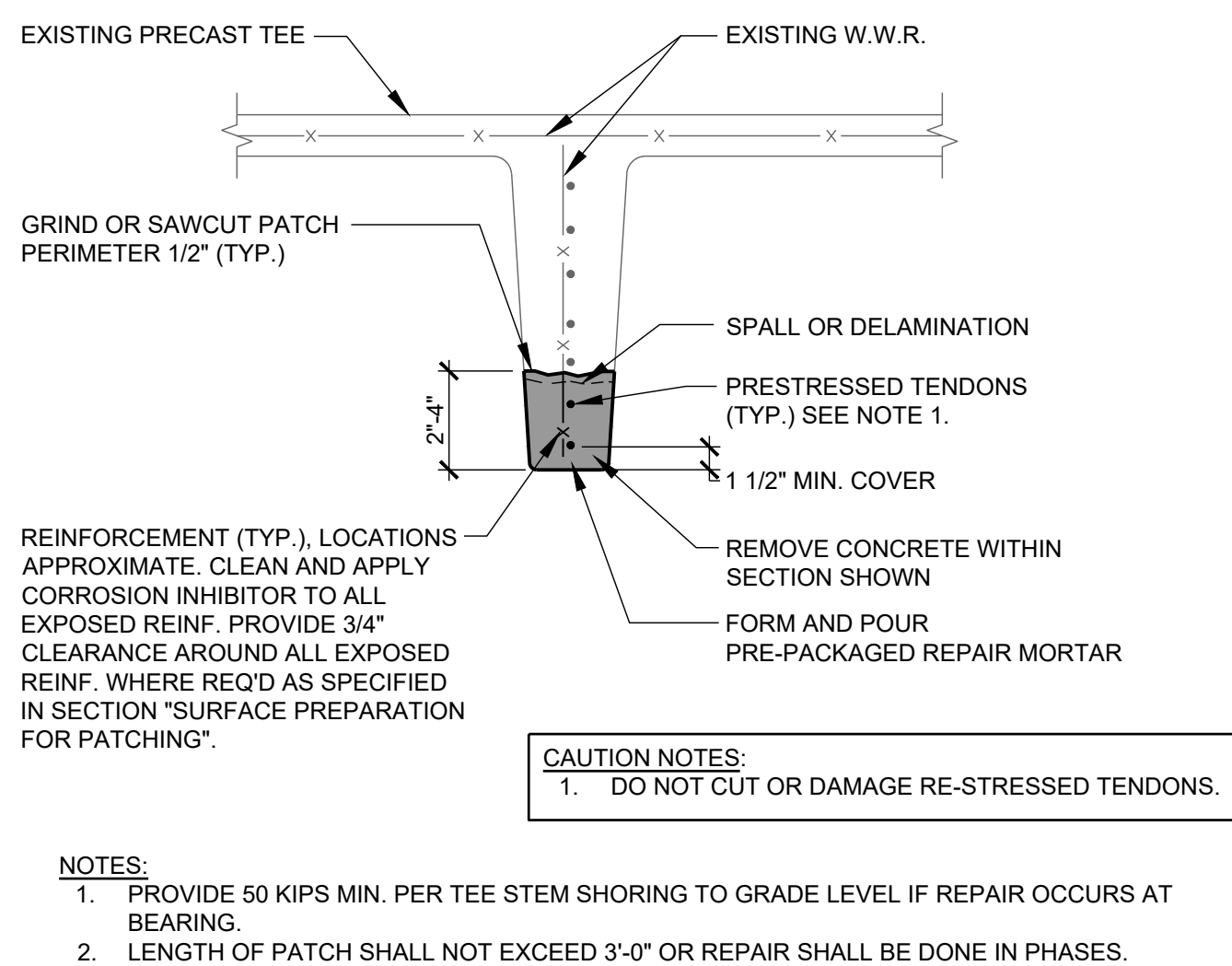
3.9 TEE FLANGE STRENGTHENING



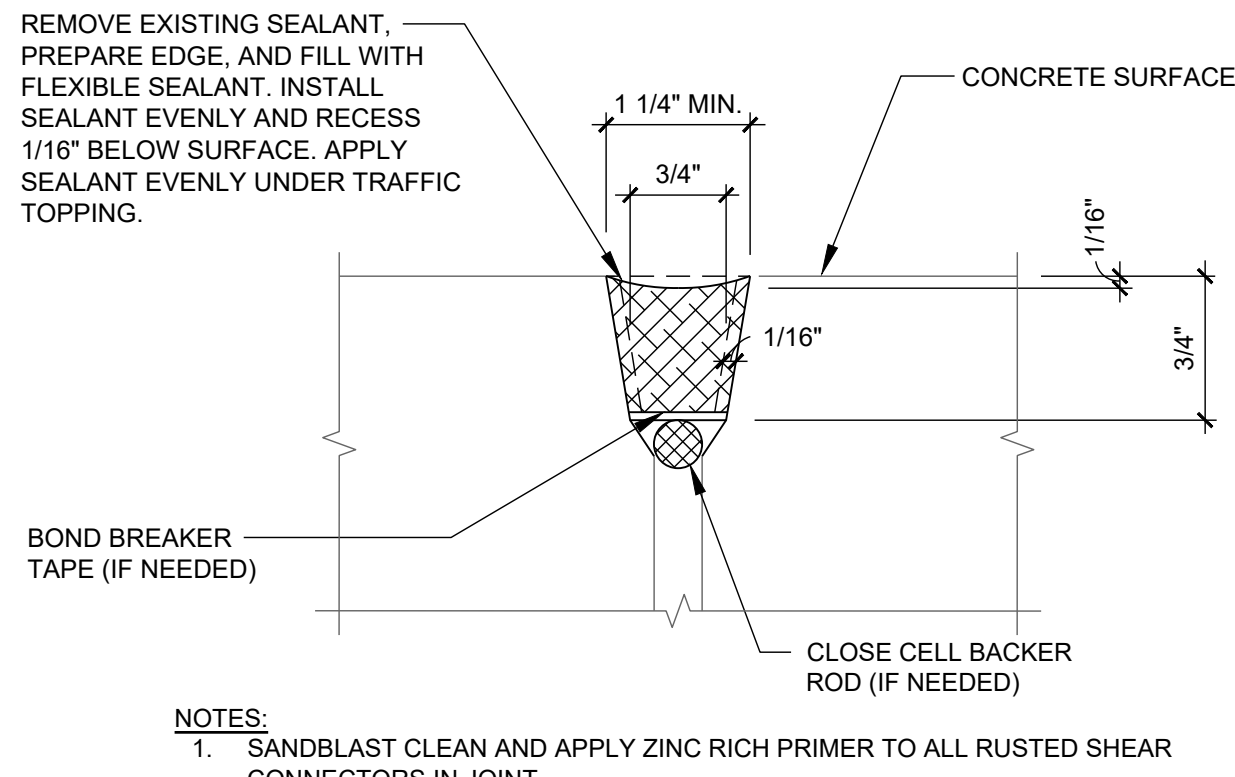
11.1 SEAL RANDOM FLOOR CRACKS



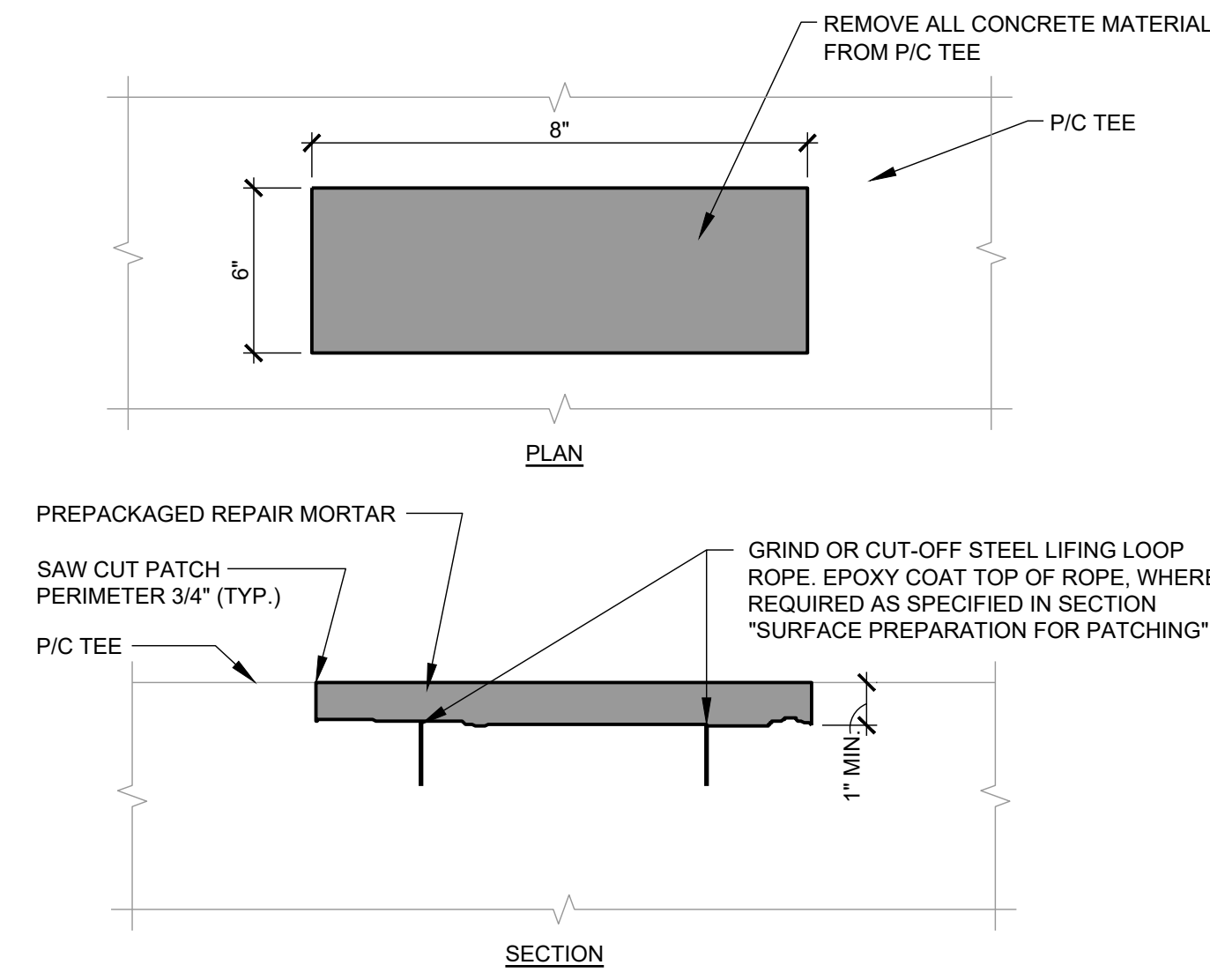
3.4 FLOOR REPAIR - CURB



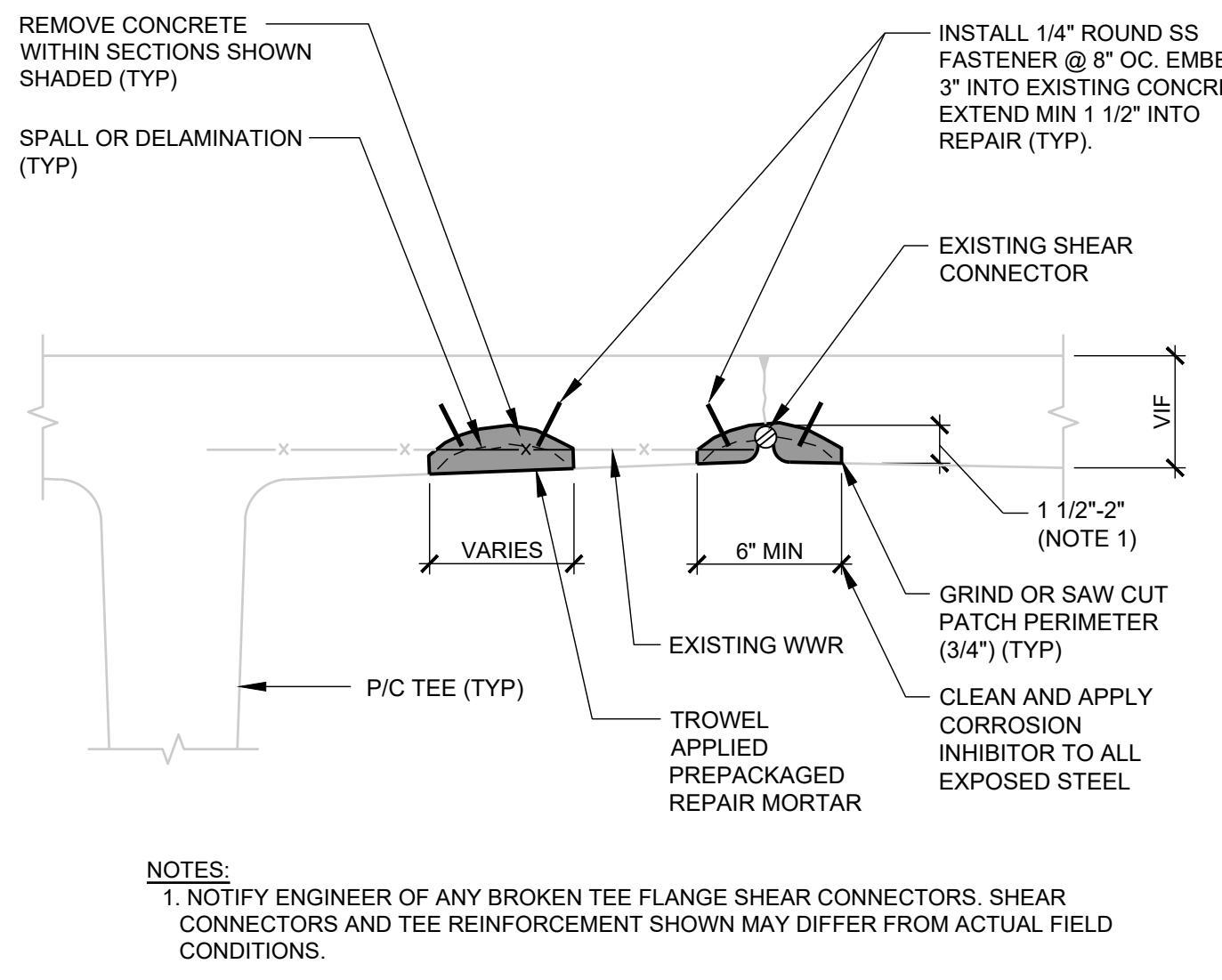
8.1 TEE STEM REPAIR



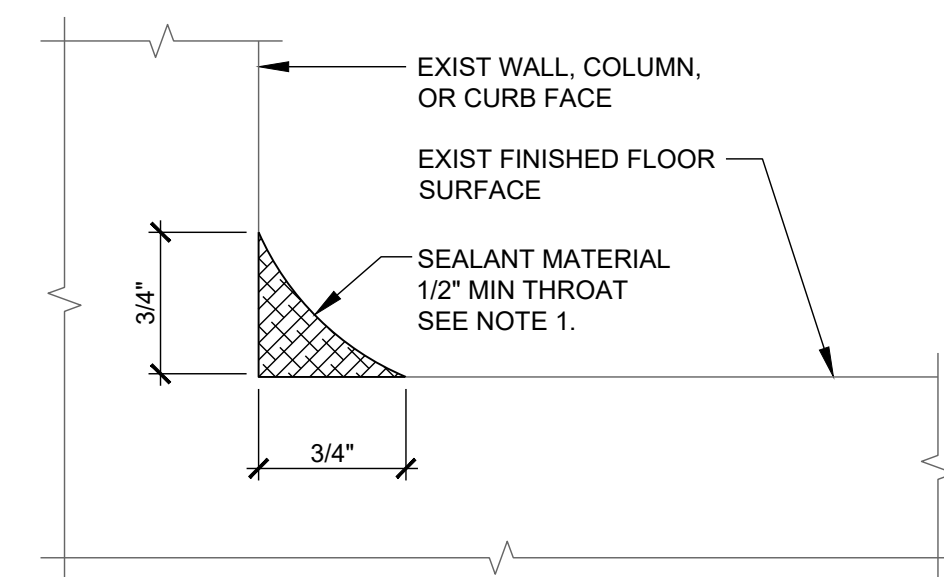
11.4 TEE-TO-TEE JOINT SEALANT



3.5 FLOOR REPAIR - LIFTING LOOPS



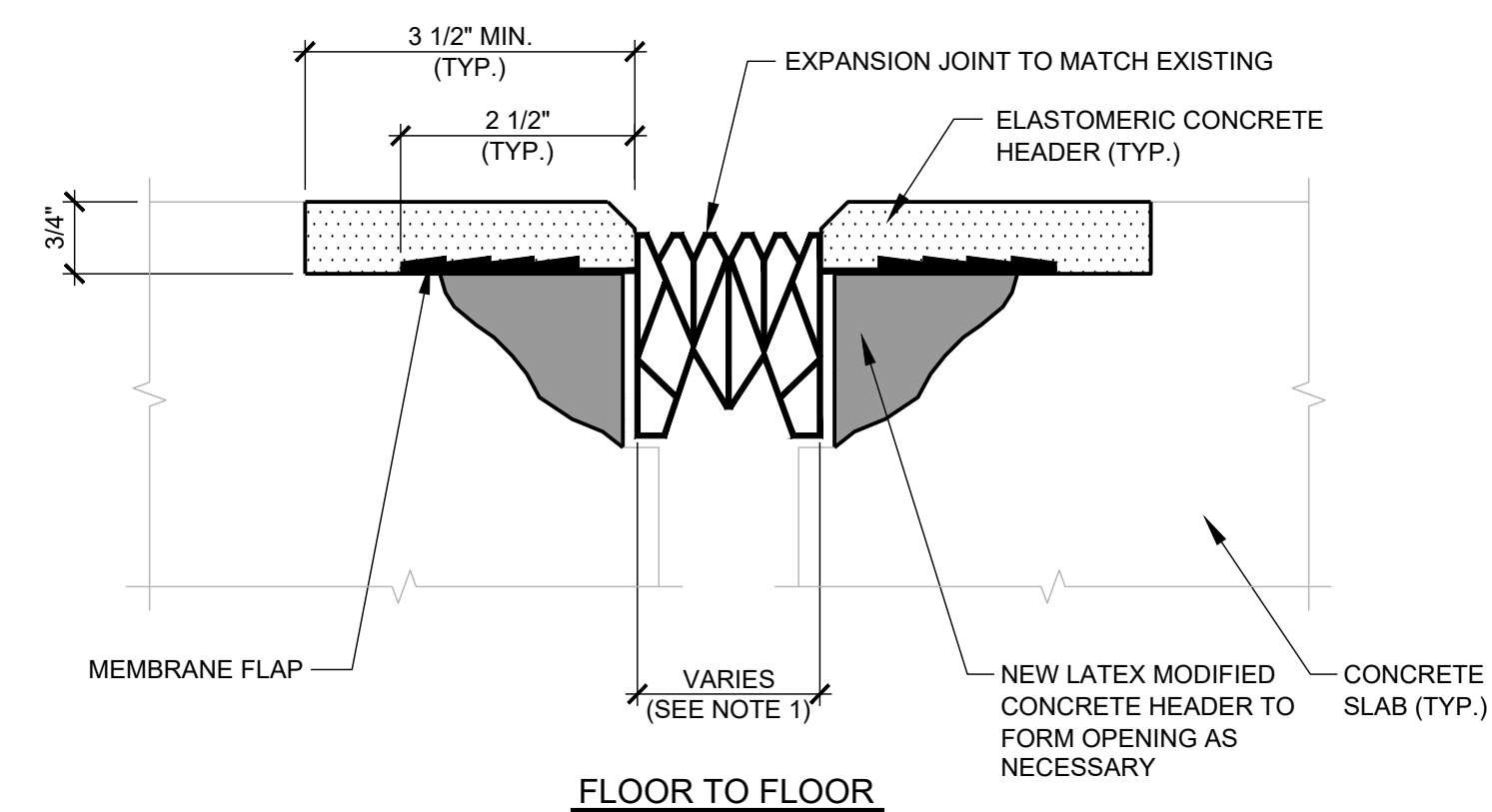
8.4 TEE FLANGE REPAIR



11.7 COVE SEALANT

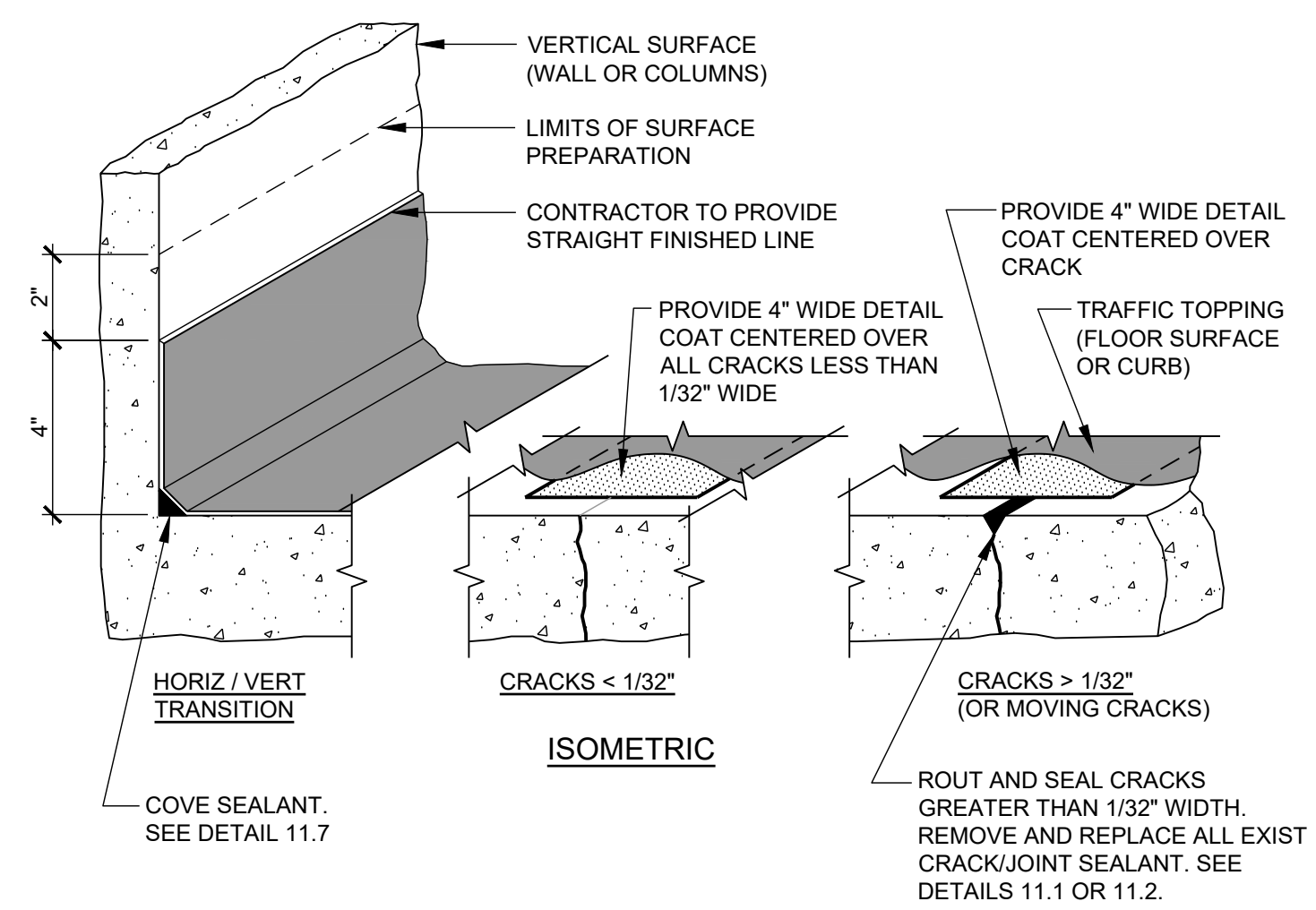
SHEET NOTES

- REPAIR DETAIL NOTES:
1. ALL SUBSTRATE SURFACES SHALL BE CLEANED, FREE OF DEBRIS AND, ROUGHENED PRIOR TO APPLICATION OF REPAIR MATERIAL. APPLY BONDING AGENT TO SUBSTRATE IF REQUIRED PER REPAIR MORTAR MANUFACTURER'S REQUIREMENTS.
 2. DO NOT CUT OR DAMAGE REINFORCING. NOTIFY ENGINEER IF EXISTING REINFORCING STEEL APPEARS TO HAVE OVER 20% SECTION LOSS OR TWO ADJACENT BARS HAVE OVER 10% SECTION LOSS. ENGINEER SHALL DETERMINE DURING CONSTRUCTION IF REINFORCING REPAIRS ARE REQUIRED.
 3. ALL REBAR THAT IS EXPOSED SHALL BE CLEANED AND COATED WITH A CORROSION INHIBITOR.
 4. ALL EXISTING ARCHITECTURAL DETAILS SHALL BE MAINTAINED IN AREAS OF REPAIR.
 5. NON-EPOXY COATED REINFORCING STEEL EXPOSED IN REPAIR AREAS SHALL BE COATED WITH ZINC RICH REBAR PAINT. THIS IS INCIDENTAL TO THE WORK ITEM.
 6. THE SECTION OF DOWEL BARS TO BE EMBEDDED IN CONCRETE SHALL BE EPOXY COATED OR PAINTED.
 7. CONTRACTOR IS SOLELY RESPONSIBLE FOR THE DESIGN AND INSTALLATION OF TEMPORARY CONSTRUCTION SHORING NECESSARY TO COMPLETE THE WORK.
 8. PROVIDE AND MAINTAIN SHORING, BRACING, OR STRUCTURAL SUPPORT TO PRESERVE STABILITY AND PREVENT MOVEMENT, SETTLEMENT, OR COLLAPSE OF CONSTRUCTION.



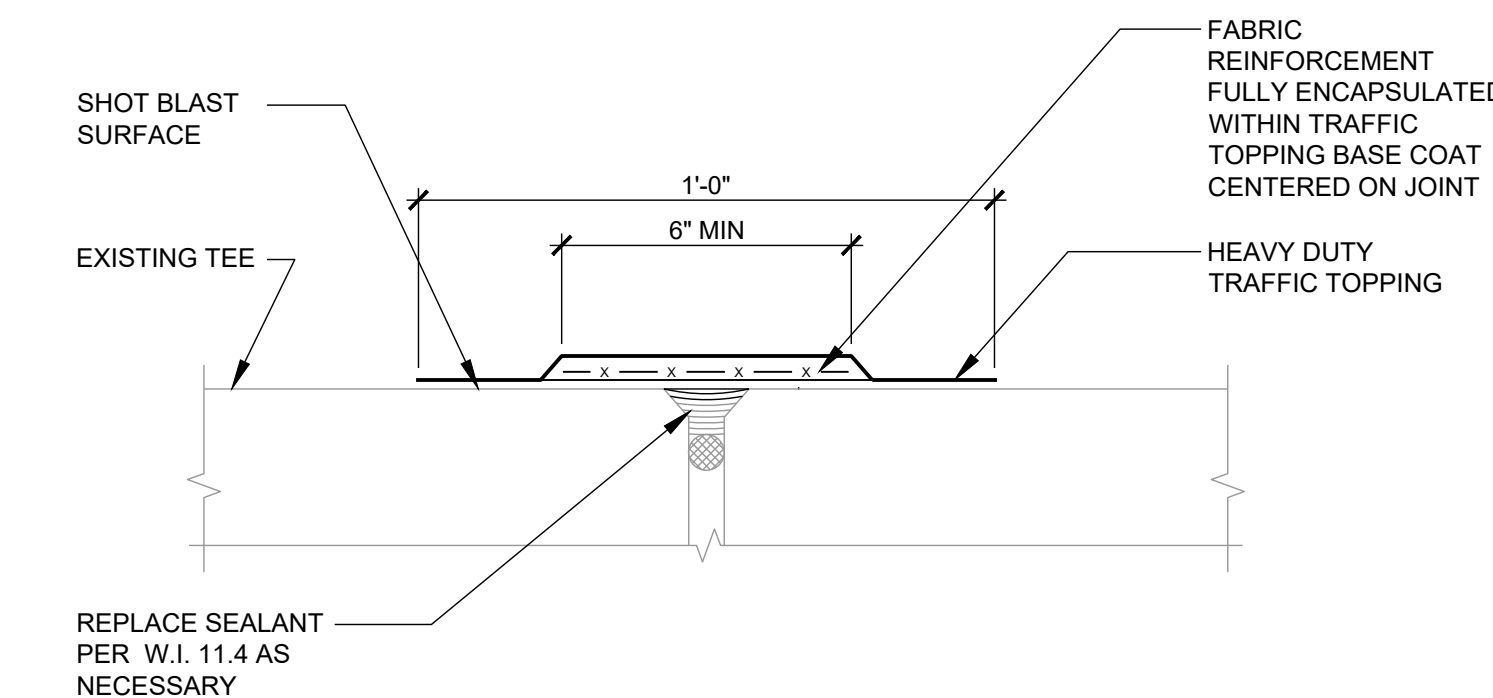
- NOTES:
1. CONTRACTOR SHALL, WITH MANUFACTURER, VERIFY FIELD INSTALLATION WIDTH BASED ON TEMPERATURE CONDITIONS.
 2. FLOOR SPALLS ADJACENT TO JOINT SHALL BE REPAIRED AND PAID UNDER W.I. 3.1.
 3. ANGLE EXPANSION JOINT UP ONTO ALL CURBS.

10.3 EXPANSION JOINT - ELASTOMERIC



- NOTE:
1. QUANTITIES BASED ON HORIZONTAL APPLICATION AREA. VERTICAL DETAILING. ADDITIONAL DETAIL COAT OVER CRACKS. ROUTING AND SEALING CRACKS. INSTALLATION OF COVE SEALANT, AND REMOVAL AND REPLACEMENT OF EXISTING SEALANTS ARE INCIDENTAL TO THIS WORK.

16.1 TRAFFIC TOPPING - VEHICULAR



- NOTES:
1. TRAFFIC TOPPING AT JOINTS SHALL BE COMPLETE SYSTEM. REFER TO W.I. 16.1 FOR ADDITIONAL REQUIREMENTS.
 2. EXTEND TRAFFIC TOPPING MINIMUM 2\"/>

16.4 TRAFFIC TOPPING - TEE JOINTS



2895 Greenspoint Pkwy
Suite 600
Hoffman Estates, IL 60169
847.697.2640 Ph
www.walkerconsultants.com

AURORA POLICE DEPARTMENT
PARKING STRUCTURE
2024 MAINTENANCE REPAIRS

AURORA, ILLINOIS

MARK	DATE	DESCRIPTION
ISSUE:	RELEASED FOR BIDS	
ISSUE DATE:	08/04/2024	
PROJECT NO:	31-009419.20	
DRAWN BY:	JAP	
CHECKED BY:	JSM	

COPYRIGHT © 2024. ALL RIGHTS RESERVED.
NO PART OF THIS DOCUMENT MAY BE REPRODUCED IN ANY FORM OR BY ANY MEANS WITHOUT PERMISSION FROM WALKER CONSULTANTS.

SHEET TITLE:
REPAIR
DETAILS

R-501