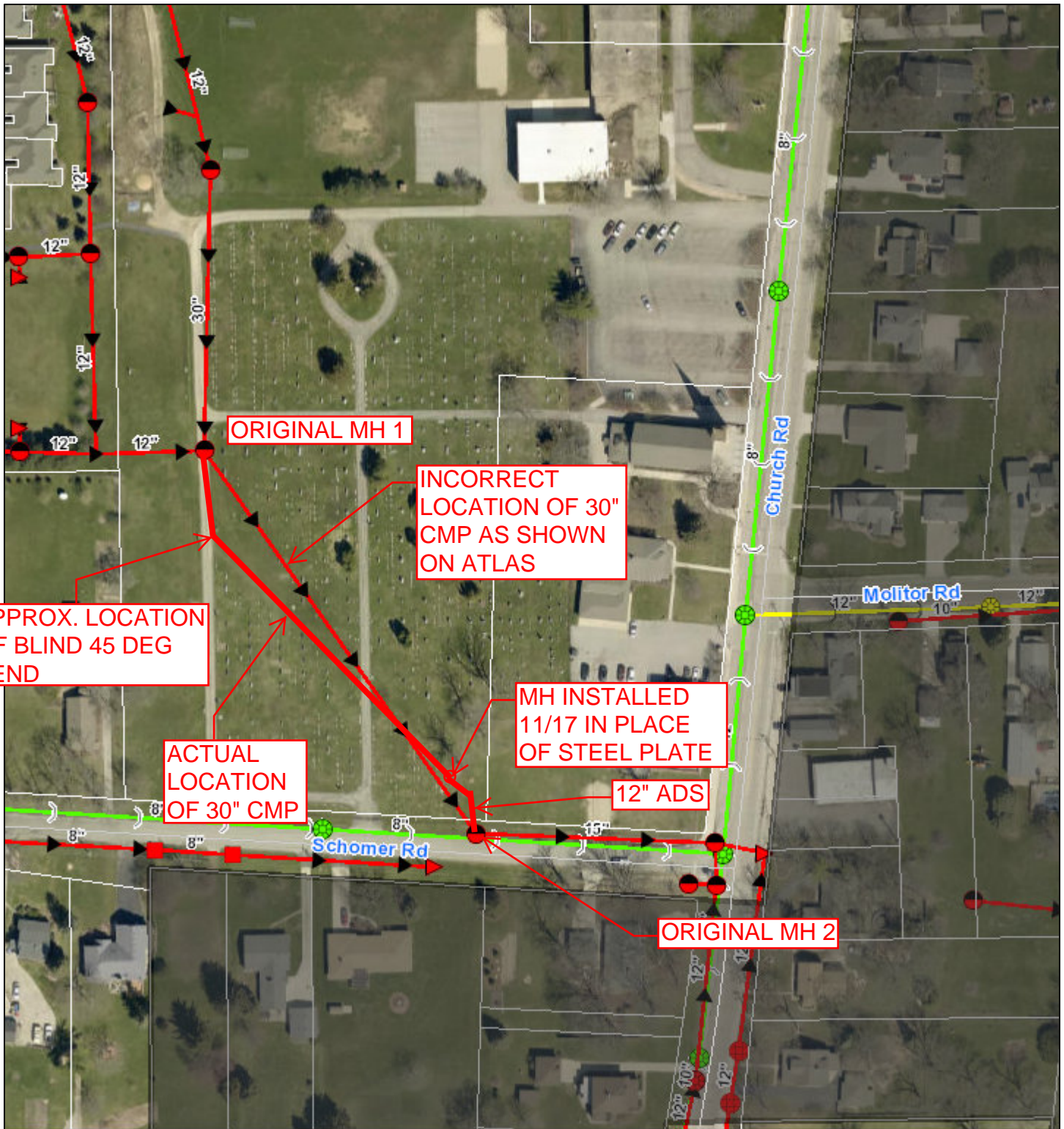


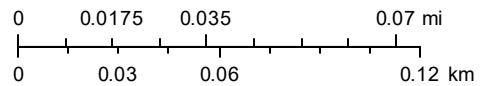
# Engineering Final Printout



October 23, 2017

1:2,257

- |   |  |   |
|---|--|---|
| — Centerlines   | <span style="display:inline-block; width:15px; height:15px; background-color:purple;"></span> Naperville       | <span style="display:inline-block; width:15px; height:15px; background-color:lightgreen;"></span> Warrenville   |
| <b>City Limits</b>  | <span style="display:inline-block; width:15px; height:15px; background-color:lightcoral;"></span> North Aurora | <span style="display:inline-block; width:15px; height:15px; background-color:lightpink;"></span> Yorkville      |
| <span style="display:inline-block; width:15px; height:15px; background-color:lightcoral;"></span> Batavia       | <span style="display:inline-block; width:15px; height:15px; background-color:lightcoral;"></span> Oswego       | <span style="display:inline-block; width:15px; height:15px; border:1px solid yellow;"></span> COA Owned Parcels |
| <span style="display:inline-block; width:15px; height:15px; background-color:lightblue;"></span> City of Aurora | <span style="display:inline-block; width:15px; height:15px; background-color:lightblue;"></span> Sugar Grove   | Parcels   |
| <span style="display:inline-block; width:15px; height:15px; background-color:blue;"></span> Montgomery          | <span style="display:inline-block; width:15px; height:15px; background-color:gray;"></span> Unincorporated     | <span style="display:inline-block; width:15px; height:15px; background-color:lightblue;"></span> Fox River      |



The City of Aurora GIS and Engineering Department.  
 Source: Esri, DigitalGlobe, GeoEye, Earthstar Geographics, CNES/Airbus  
 DS, USDA, USGS, AeroGRID, IGN, and the GIS User Community