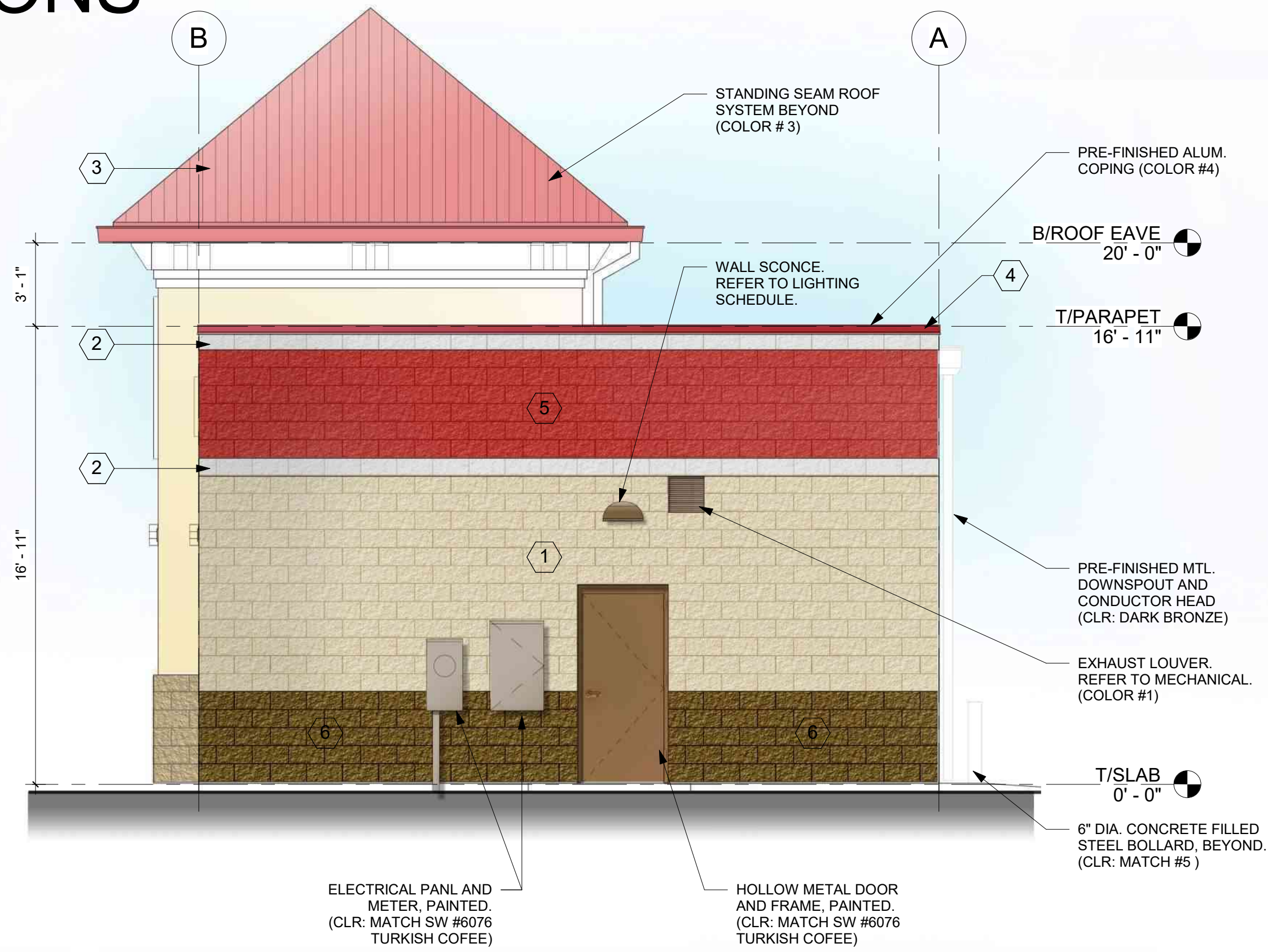


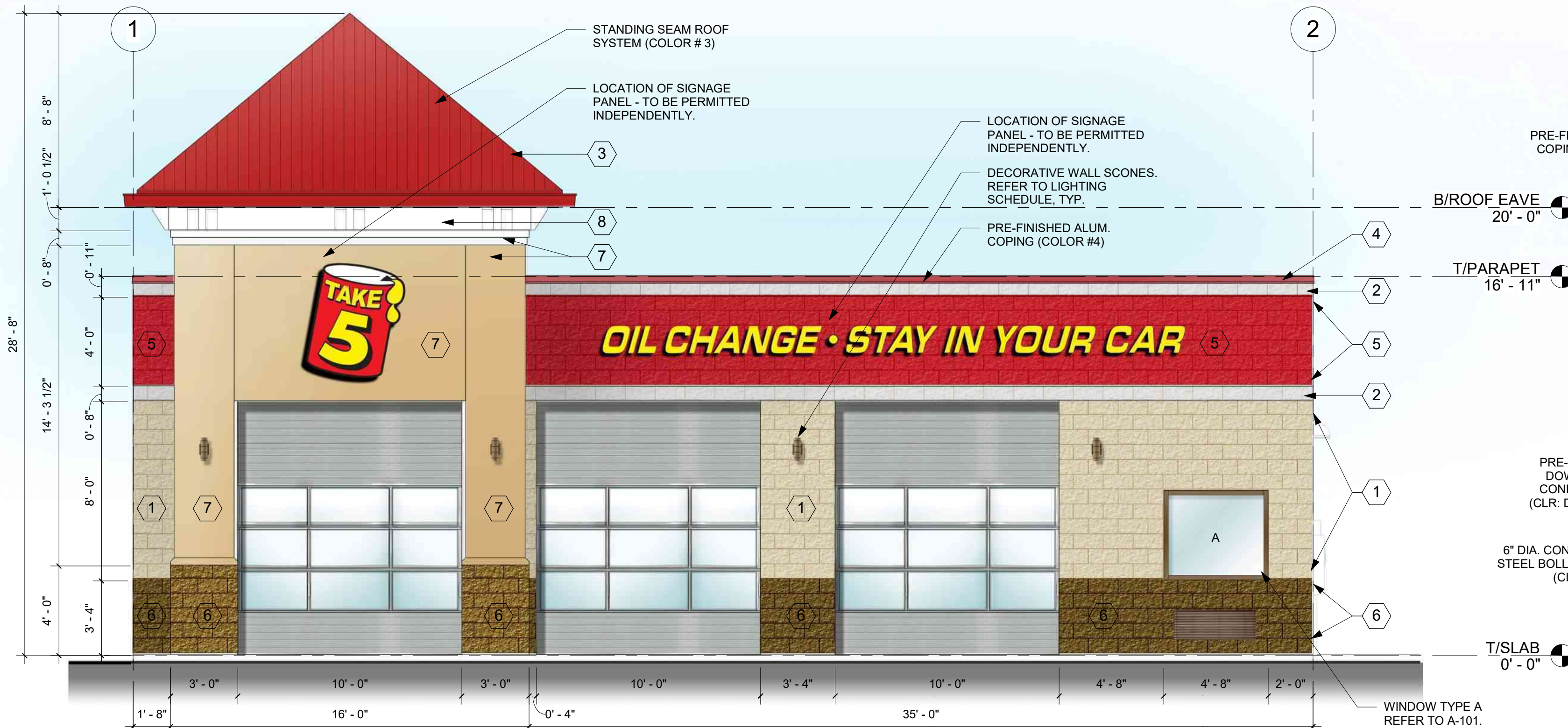
# ELEVATIONS



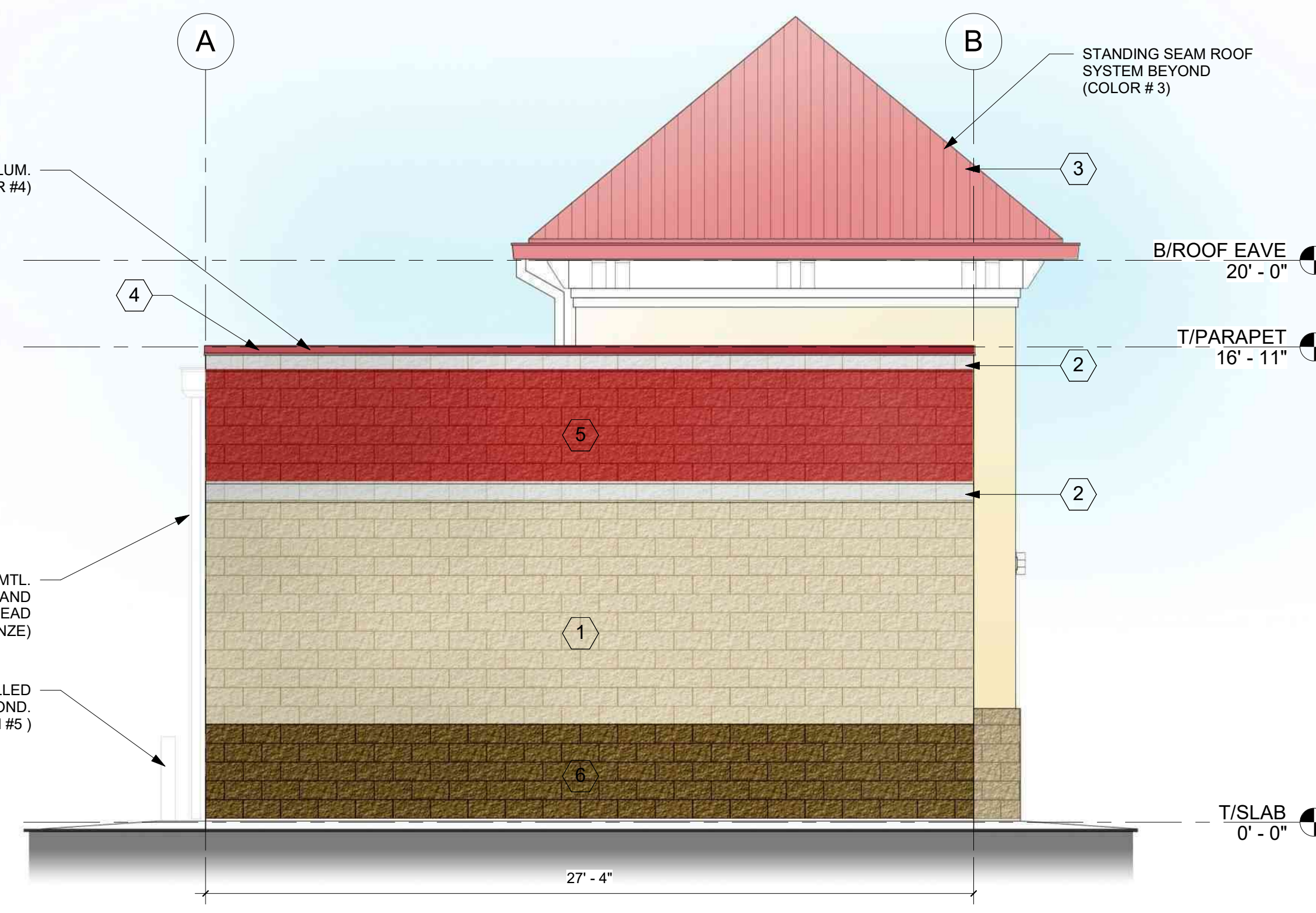
1 EAST ELEVATION  
1/4" = 1'-0"



3 SOUTH ELEVATION  
1/4" = 1'-0"



2 WEST ELEVATION  
1/4" = 1'-0"



4 NORTH ELEVATION  
1/4" = 1'-0"

EXTERIOR FINISH SCHEDULE			
MARK	MATERIAL TYPE / AREA	COATS	COLOR / FINISH
1	SPLIT FACE CMU (MAIN COLOR)	--	MATCH SW COLOR #7693, STONEBRIAR
2	SMOOTH FACE CMU ACCENT BAND	--	MATCH SW COLOR #7678, COTTAGE CREAM
3	TOWER - PREFINISHED STANDING SEAM	--	MATCH SW COLOR #6871, POSITIVE RED
4	PREFINISHED METAL COPING / CORNICE	--	MATCH SW COLOR #6871, POSITIVE RED
5	SPLIT FACE CMU (SECONDARY COLOR)	--	MATCH SW COLOR #6871, POSITIVE RED
6	SPLIT FACE CMU (LOWER BASE)	--	MATCH SW COLOR #6097, STURDY BROWN
7	EIFS (MAIN COLOR)	--	MATCH SW COLOR #7693, STONEBRIAR
8	HARDIE BOARD FRIEZE TRIM - PAINTED	--	MATCH SW COLOR #7678, COTTAGE CREAM
9	VINYL FENCE SLAT ENCLOSURE	--	MATCH SW COLOR #6097, STURDY BROWN

Elevation Data Table: Elevations		
Description	Value	Unit
a) Building Height in feet (typical)	28'-8"	feet
b) Total Building Square Footage (typical)	1,440	Square Feet
c) First Floor Building Square Footage (typical)	1,440	Square Feet
d) Number of building stories (typical)	1 Story	Square Feet
e) Exterior Material List (including colors) for all buildings and accessory strutures:		
SEE ADJOINING EXTERIOR FINISH TABLE (INCLUDING MATERIAL LIST AND COLORS)		

Revision Schedule

Rev	Date	Description
1	11/16/21	BUILDING/SIGNAGE ELEV.

BUILDING DESIGNER OF RECORD:

ZWArchitecture LLC

we reveal in solving it

program planning  
project management  
architecture  
design

813 W. RANDOLPH  
SUITE 300  
CHICAGO, ILLINOIS 60607  
WWW.ZWALINK.COM  
312.879.9636

SITE DESIGNER OF RECORD:

JACOB & HEFNER  
ASSOCIATES

1333 Butterfield Rd, Suite 300, Downers Grove, IL 60515  
PHONE: (630) 652-4600, FAX: (630) 652-4601  
www.jacobandhefner.com

OWNER OF RECORD:

Essential Automotive Services, LLC  
Raymond J Kane

OWNER ADDRESS:  
901 MAIN STREET, SUITE 5200  
DALLAS, TX 75202

SHEET TITLE:

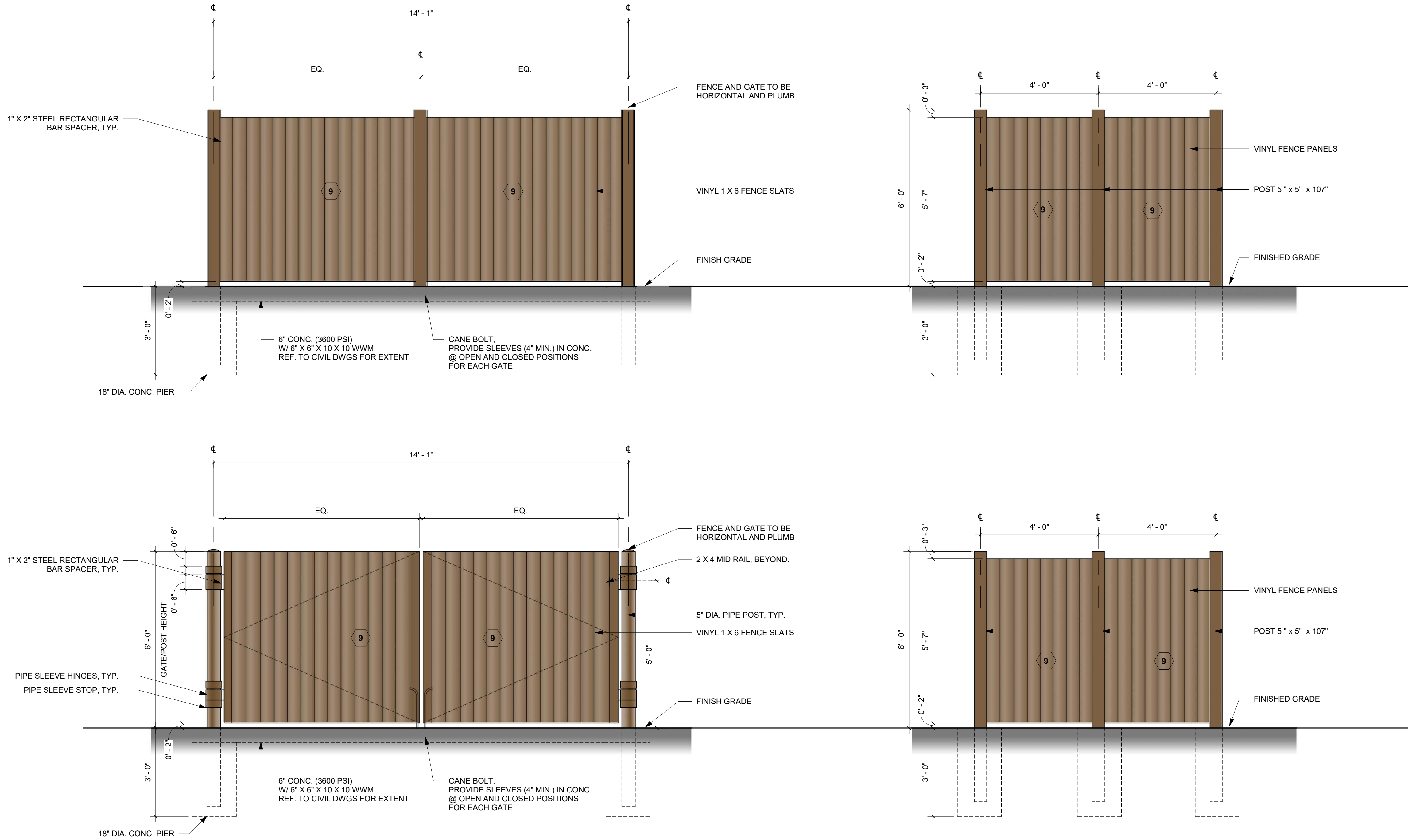
BUILDING ELEVATIONS

SHEET NUMBER:

SHEET 1 OF 2



ELEVATIONS



- NOTES:**
1. ALL HARDWARE TO BE GALVANIZED UNLESS OTHERWISE NOTED
  2. ALL STEEL POSTS AND GATE FRAME TO BE PRIMED AND PAINTED WITH 2 COATS EACH. COLOR TO BE DARK BRONZE SW6076.
  3. ALL STEEL MEMBERS TO BE SHOP WELDED. PROVIDE SHOP DRAWINGS FOR APPROVAL PRIOR TO FABRICATION. ALL STEEL TO BE PAINTED DARK BRONZE SW6076.
  4. ALL METAL FRAMING, POST AND HARDWARE TO BE PRIMED AND PAINTED W/ MIN. 1 COAT PRIMER, AND 2 COATS FINISH. PAINT TO BE OIL BASED AND COLOR TO BE DARK BRONZE SW6076.

EXTERIOR FINISH SCHEDULE			
MARK	MATERIAL TYPE / AREA	COATS	COLOR / FINISH
1	SPLIT FACE CMU (MAIN COLOR)	--	MATCH SW COLOR #7693, STONEBRIAR
2	SMOOTH FACE CMU ACCENT BAND	--	MATCH SW COLOR #7678, COTTAGE CREAM
3	TOWER - PREFINISHED STANDING SEAM	--	MATCH SW COLOR #6871, POSITIVE RED
4	PRE-FINISHED METAL COPING / CORNICE	--	MATCH SW COLOR #6871, POSITIVE RED
5	SPLIT FACE CMU (SECONDARY COLOR)	--	MATCH SW COLOR #6871, POSITIVE RED
6	SPLIT FACE CMU (LOWER BASE)	--	MATCH SW COLOR #6097, STURDY BROWN
7	EIFS (MAIN COLOR)	--	MATCH SW COLOR #7693, STONEBRIAR
8	HARDIE BOARD FRIEZE TRIM - PAINTED	--	MATCH SW COLOR #7678, COTTAGE CREAM
9	VINYL FENCE SLAT ENCLOSURE	--	MATCH SW COLOR #6097, STURDY BROWN

Elevation Data Table: Elevations		
Description	Value	Unit
a) Building Height in feet (typical)	28'-8"	feet
b) Total Building Square Footage (typical)	1,440	Square Feet
c) First Floor Building Square Footage (typical)	1,440	Square Feet
d) Number of building stories (typical)	1 Story	Square Feet
e) Exterior Material List (including colors) for all buildings and accessory strutures:		
SEE ADJOINING EXTERIOR FINISH TABLE (INCLUDING MATERIAL LIST AND COLORS)		

Revision Schedule

Rev	Date	Description
1	11/16/21	BUILDING/SIGNAGE ELEV.

BUILDING DESIGNER OF RECORD:


program planning  
project management  
architecture  
design

**ZW**Architecture LLC

*we reveal in solving it*

813 W. RANDOLPH  
SUITE 300  
CHICAGO, ILLINOIS 60607  
WWW.ZWALINK.COM  
312.879.8636

SITE DESIGNER OF RECORD:



**JACOB & HEFNER**  
ASSOCIATES

1333 Butterfield Rd, Suite 300, Downers Grove, IL 60515  
PHONE: (630) 652-4600, FAX: (630) 652-4601  
www.jacobandhefner.com

OWNER OF RECORD:

Essential Automotive Services, LLC  
Raymond J Kane

OWNER ADDRESS:  
901 MAIN STREET, SUITE 5200  
DALLAS, TX 75202

SHEET TITLE:

TRASH ENCLOSURE  
ELEVATIONS

SHEET NUMBER:

SHEET 2 OF 2

FRONT ELEVATION

**TAKE 5**  
**OIL CHANGE**  
2957 Kirk Rd  
Aurora, IL 60502

**UL** Underwriters Laboratories Inc. •  
UL File #E225670

Copyright Notice ©  
This drawing and all  
reproductions thereof are the property  
of Signs Unlimited, Inc. and  
may not be reproduced, published,  
changed or used in any way without  
written consent.

Sq. Ft. Signage:  
73.78

Signage Allowance:  
158.13 Sq. Ft. Aggregate  
(1.5 Sq. Ft. Per Li. Ft. Of Street  
Facing Facades Aggregate)

**ADDITIONAL ELEMENT**

**ALUMINUM PANS**

Quantity:  
4  
Size:  
As in drawing  
Color:  
Black and White  
Returns:  
1"  
Mounting:  
Angle into facade



**NOTE: CENTERED UNDER LIGHTS  
AND 6" DOWN FROM THE BOTTOM  
OF SCENCE VERTICALLY**

INITIAL LAYOUT:  
December 1, 2021

REVISIONS:  
I  
II  
III  
IV  
V

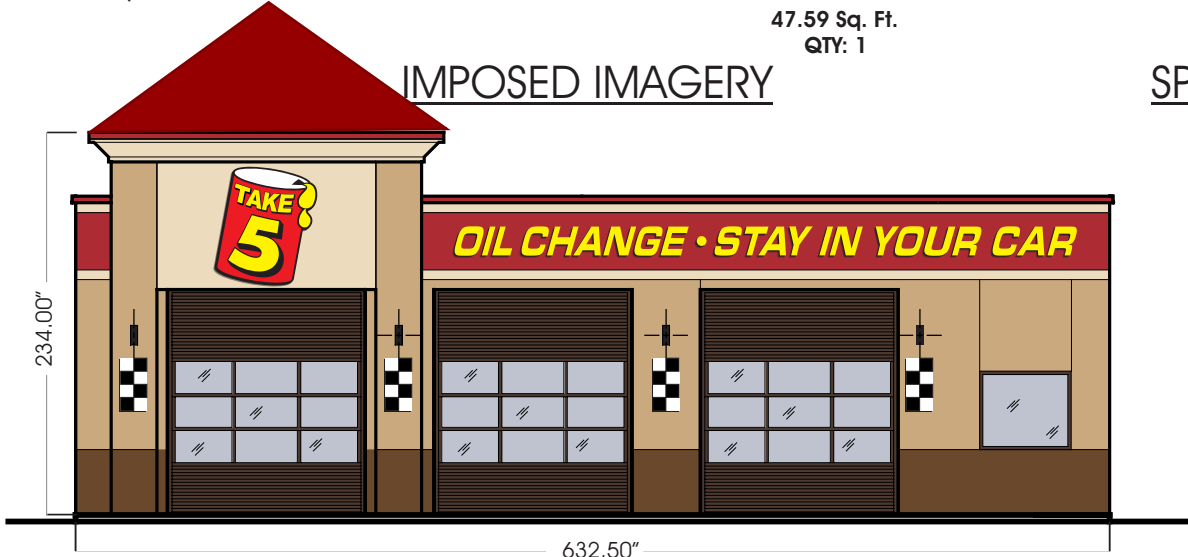


Oil Can  
Calculation



380.75"  
***OIL CHANGE • STAY IN YOUR CAR***  
47.59 Sq. Ft.  
QTY: 1

**IMPOSED IMAGERY**

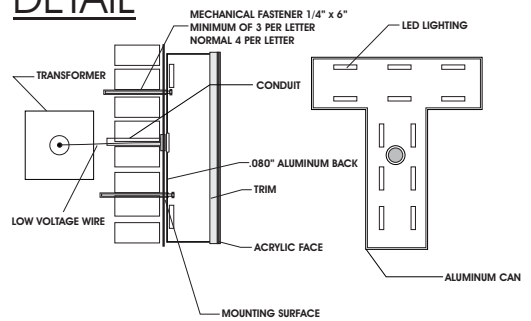


**SPECIFICATIONS**

**ILLUMINATED  
CHANNEL LETTERS**

Quantity:  
See above  
Size:  
As in drawing  
Trim:  
1"  
Trim Color:  
Black  
Return Color:  
Black  
Face Color:  
Yellow  
Face:  
1/8" Acrylic  
Letter Interior:  
Gloss White  
Illumination:  
LED  
Mounting:  
Studded Letters

**DETAIL**



**NOTES:**  
• IF ELECTRICAL LINE/J-BOX IS WITHIN 6' OF ELECTRICAL, CONNECTION TO BE HANDLED BY INSTALLER.  
IF NOT ELECTRICAL HANDLED BY OWNER/GC  
• IF ROOF PENETRATIONS ARE NECESSARY, THEY ARE TO BE SEALED BY A ROOFER. THIS IS HANDLED BY THE GC/OWNER  
• REMOVAL AND DISPOSAL OF EXISTING WALL SIGNS HANDLED BY GC/OWNER

Owner/Landlord Approval \_\_\_\_\_

**SIGNS UNLIMITED**  
communicate your identity

6801 Mount Hermon Church Rd, Ste C, Durham, NC 27705 • (P) 919-552-8689 • (F) 919-557-1322

REAR ELEVATION

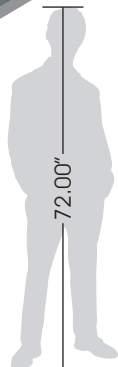
TAKE 5  
OIL CHANGE  
2957 Kirk Rd  
Aurora, IL 60502

 Underwriters Laboratories Inc. •  
UL File #E225670

Copyright Notice ©  
This drawing and all  
reproductions thereof are the property  
of Signs Unlimited, Inc. and  
may not be reproduced, published,  
changed or used in any way without  
written consent.

PROOF

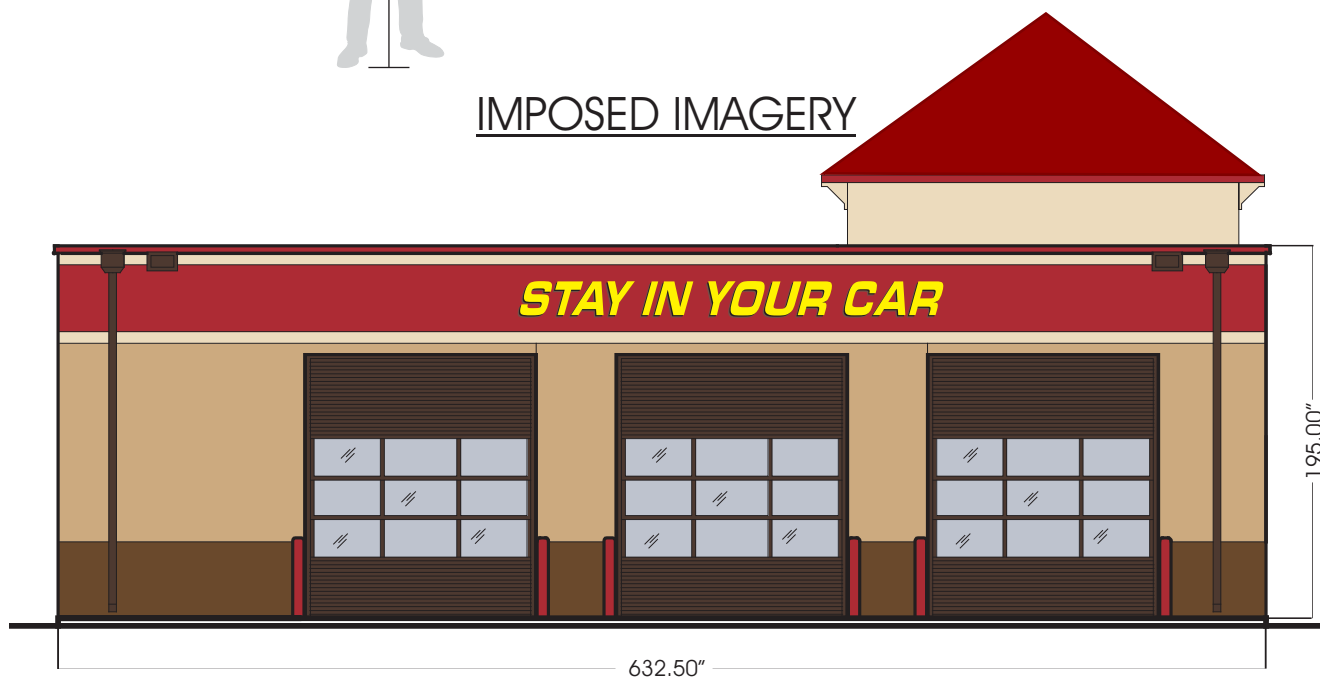
INITIAL LAYOUT: December 1, 2021  
REVISIONS:  
I  
II  
III  
IV  
V



221.50"  
18.00"  
**STAY IN YOUR CAR**

INFORMATIVE/INSTRUCTIONAL MESSAGE  
(NOT COUNTED TOWARD ALLOWANCE)  
QTY: 1

IMPOSED IMAGERY

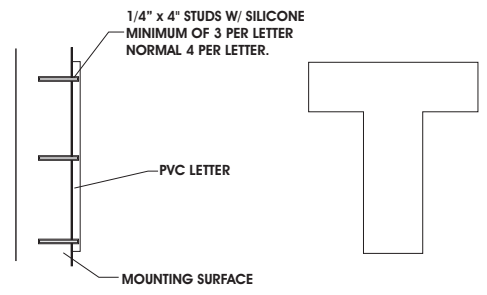


SPECIFICATIONS  
**NON ILLUMINATED  
PVC LETTERS W/ STUDS**

**Quantity:**  
See above  
**Size:**  
As in drawing  
**Thickness:**  
1/2"  
**Face Color:**  
Yellow  
**Edge Color:**  
Yellow  
**Mounting:**  
Studs w/ Silicone

**Sq. Ft. Signage:**  
27.69  
**Signage Allowance:**  
N/A Not counted as signage

DETAIL



**NOTES:**  
• INFORMATIVE/INSTRUCTIONAL MESSAGE (NOT COUNT TOWARD ALLOWANCE)  
• IF ROOF PENETRATIONS ARE NECESSARY, THEY ARE TO BE SEALED BY A ROOFER.  
THIS IS HANDLED BY THE GC/OWNER

SIDE A ELEVATION

# TAKE 5

## OIL CHANGE

2957 Kirk Rd  
Aurora, IL 60502



Underwriters Laboratories Inc. •  
UL File #E225670

Copyright Notice ©

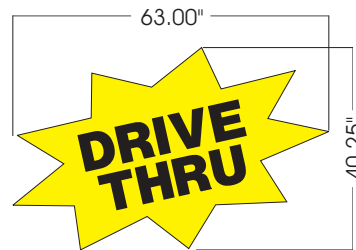
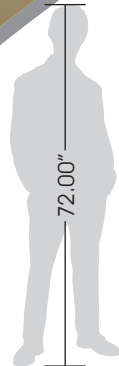
This drawing and all  
reproductions thereof are the property  
of Signs Unlimited, Inc. and  
may not be reproduced, published,  
changed or used in any way without  
written consent.

PROOF

INITIAL LAYOUT:  
December 1, 2021

REVISIONS:

I  
II  
III  
IV  
V



17.61 Sq. Ft.  
QTY: 1

Sq. Ft. Signage:

53.68

Signage Allowance:

158.13 Sq. Ft. Aggregate  
(1.5 Sq. Ft. Per Li. Ft. Of Street  
Facing Facades Aggregate)



17.91 Sq. Ft.

QTY: 1



18.16 Sq. Ft.  
QTY: 1

Oil Can  
Calculation



+/- 20 Degree  
Angle on Can

### IMPOSED IMAGERY

### SPECIFICATIONS

#### ILLUMINATED CHANNEL LETTERS

Quantity:

See above

Size:

As in drawing

Trim:

1"

Trim Color:

Black

Return Color:

Black

Face Color:

Yellow

Face:

1/8" Acrylic

Letter Interior:

Gloss White

Illumination:

LED

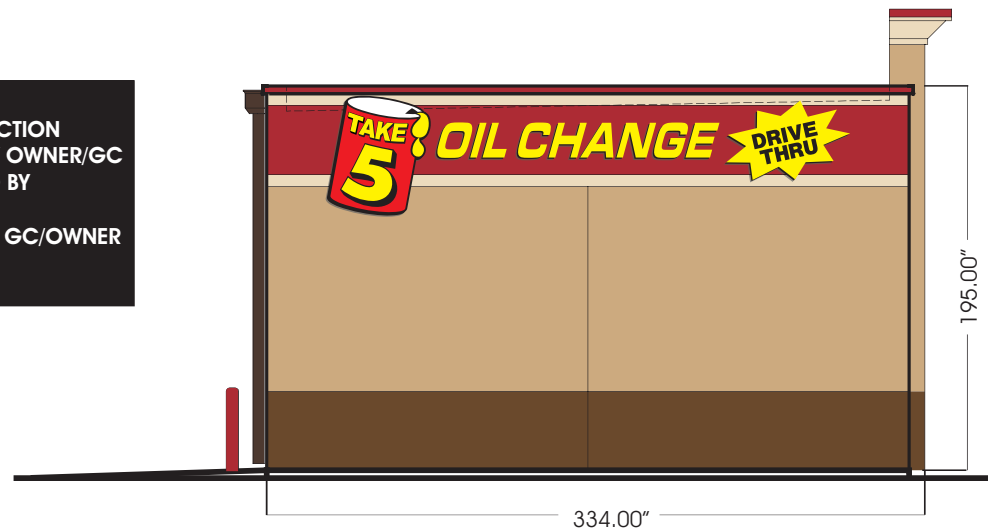
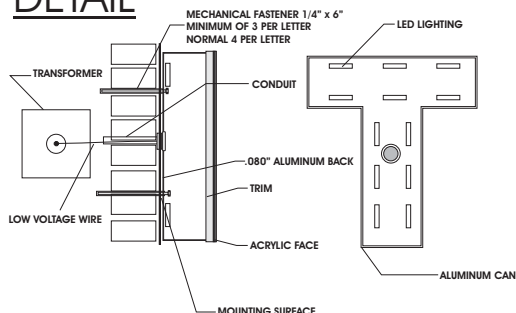
Mounting:

Studded Letters

#### NOTES:

- IF ELECTRICAL LINE/J-BOX IS WITHIN 6' OF ELECTRICAL, CONNECTION TO BE HANDLED BY INSTALLER. IF NOT ELECTRICAL HANDLED BY OWNER/GC
- IF ROOF PENETRATIONS ARE NECESSARY, THEY ARE TO BE SEALED BY A ROOFER. THIS IS HANDLED BY THE GC/OWNER
- REMOVAL AND DISPOSAL OF EXISTING WALL SIGNS HANDLED BY GC/OWNER

#### DETAIL



Owner/Landlord Approval \_\_\_\_\_

**SIGNS UNLIMITED**  
communicate your identity

6801 Mount Hermon Church Rd, Ste C, Durham, NC 27705 • (P) 919-552-8689 • (F) 919-557-1322

SIDE B ELEVATION

# TAKE 5 OIL CHANGE

2957 Kirk Rd  
Aurora, IL 60502



Underwriters Laboratories Inc. •  
UL File #E225670

Copyright Notice ©

This drawing and all  
reproductions thereof are the property  
of Signs Unlimited, Inc. and  
may not be reproduced, published,  
changed or used in any way without  
written consent.

PROOF

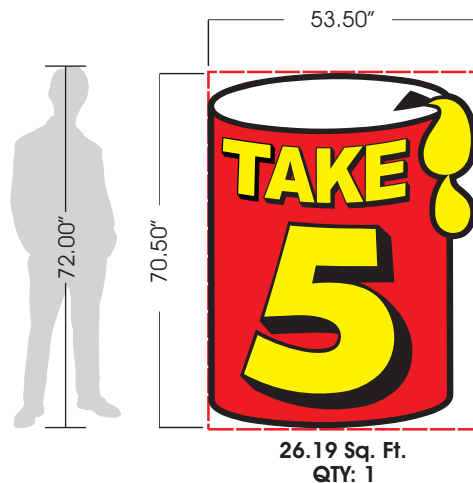
INITIAL LAYOUT:  
December 1, 2021

REVISIONS:

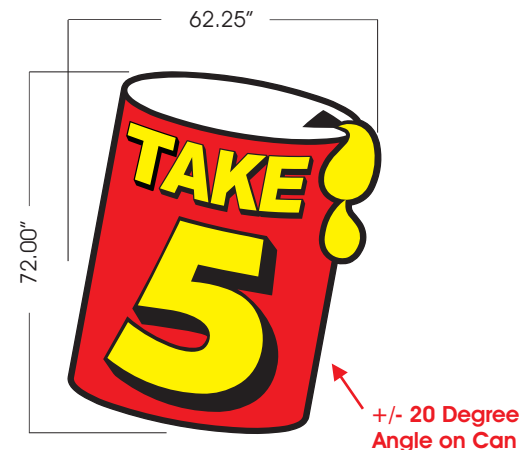
I  
II  
III  
IV  
V

Sq. Ft. Signage:  
26.19

Signage Allowance:  
158.13 Sq. Ft. Aggregate  
(1.5 Sq. Ft. Per Li. Ft. Of Street  
Facing Facades Aggregate)



Oil Can  
Calculation



## IMPOSED IMAGERY

## SPECIFICATIONS

### ILLUMINATED CHANNEL LETTERS

Quantity:

See above

Size:

As in drawing

Trim:

1"

Trim Color:

Black

Return Color:

Black

Face Color:

Yellow

Face:

1/8" Acrylic

Letter Interior:

Gloss White

Illumination:

LED

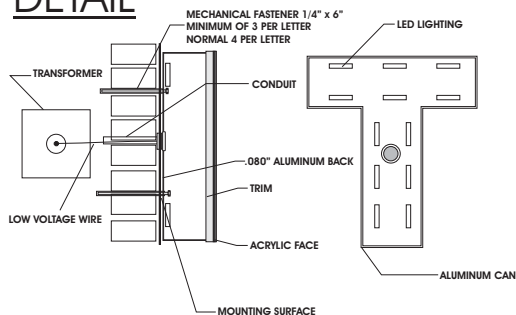
Mounting:

Studded Letters

### NOTES:

- IF ELECTRICAL LINE/J-BOX IS WITHIN 6' OF ELECTRICAL, CONNECTION TO BE HANDLED BY INSTALLER. IF NOT ELECTRICAL HANDLED BY OWNER/GC
- IF ROOF PENETRATIONS ARE NECESSARY, THEY ARE TO BE SEALED BY A ROOFER. THIS IS HANDLED BY THE GC/OWNER
- REMOVAL AND DISPOSAL OF EXISTING WALL SIGNS HANDLED BY GC/OWNER

## DETAIL



Owner/Landlord Approval \_\_\_\_\_

**SIGNS UNLIMITED**  
communicate your identity

6801 Mount Hermon Church Rd, Ste C, Durham, NC 27705 • (P) 919-552-8689 • (F) 919-557-1322



DIRECTIONAL SIGNAGE

TAKE 5  
OIL CHANGE  
2957 Kirk Rd  
Aurora, IL 60502

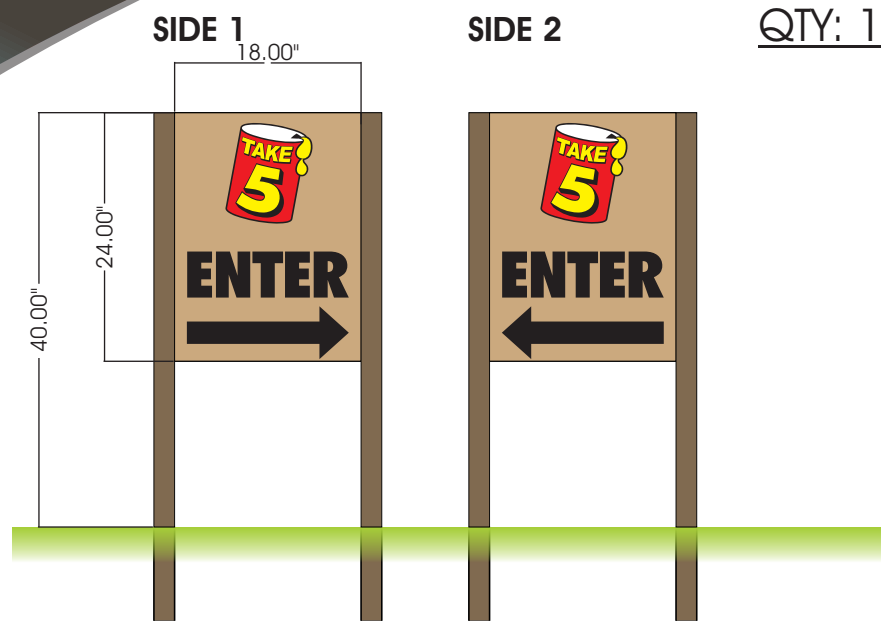
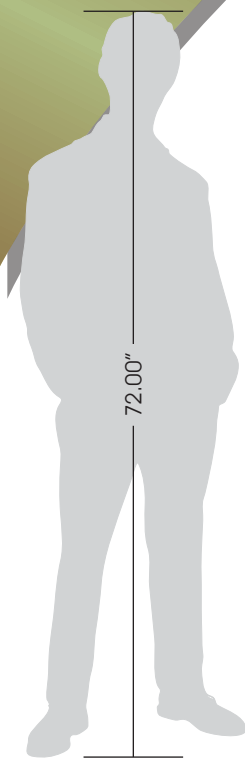
UL Underwriters Laboratories Inc. •  
UL File #E225670

Copyright Notice ©  
This drawing and all  
reproductions thereof are the property  
of Signs Unlimited, Inc. and  
may not be reproduced, published,  
changed or used in any way without  
written consent.

PROOF

INITIAL LAYOUT:  
December 1, 2021

REVISIONS:  
I 010622  
II  
III  
IV  
V

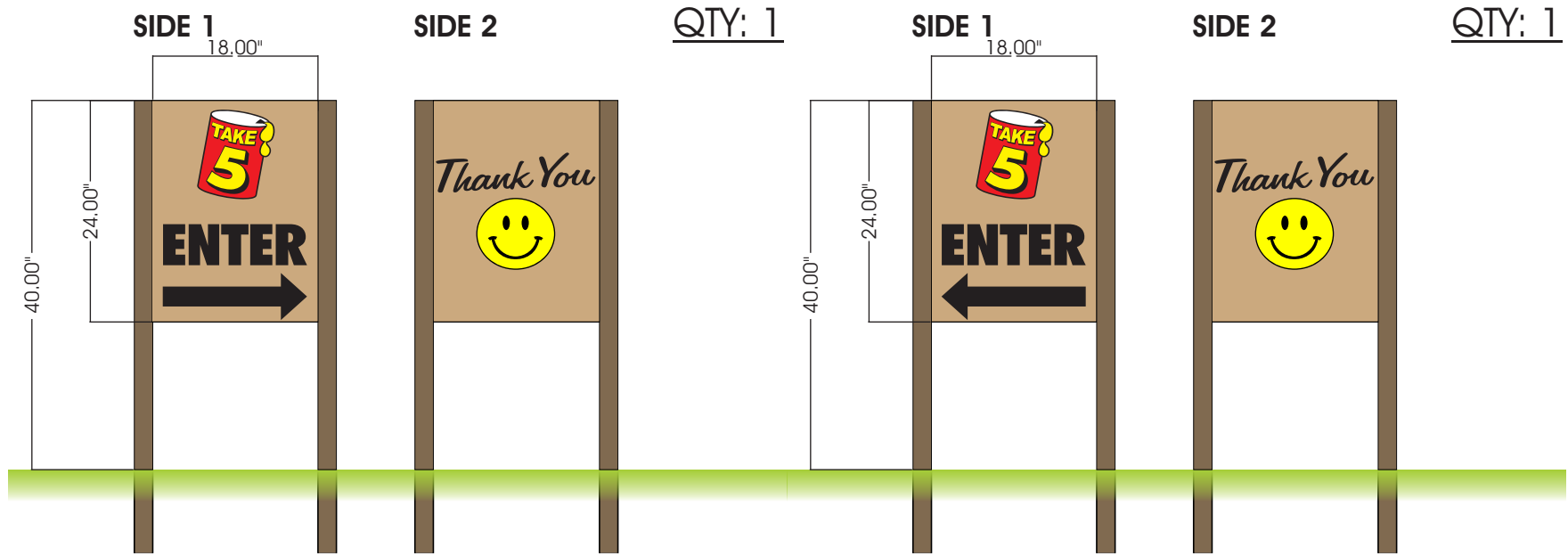


QTY: 1

SPECIFICATIONS

NON ILLUMINATED  
DOUBLE-SIDED POST & PANEL

- Quantity: See below
- Size: As in drawing
- Material: Aluminum square tubing and panels
- Face Color: SW 7693 Stonebriar and as determined by message
- Leg Color: SW 6076 Turkish Coffee
- Mounting: Into Earth
- Sq. Ft. Signage: 3.00



QTY: 1

QTY: 1

Owner/Landlord Approval \_\_\_\_\_

**SIGNS UNLIMITED**  
communicate your identity

6801 Mount Hermon Church Rd, Ste C, Durham, NC 27705 • (P) 919-552-8689 • (F) 919-557-1322

GROUND SIGN

**TAKE 5**  
**OIL CHANGE**  
2957 Kirk Rd  
Aurora, IL 60502

 Underwriters Laboratories Inc. •  
UL File #E225670

Copyright Notice ©  
This drawing and all  
reproductions thereof are the property  
of Signs Unlimited, Inc. and  
may not be reproduced, published,  
changed or used in any way without  
written consent.

PROOF

**NOTE: ENGINEERING  
REQUIREMENTS MAY  
ALTER SCOPE**

CHANGEABLE COPY CHARACTER COUNT			
EXTRAS TO BE DETERMINED AND ORDERED WITH STANDARD SET (CANNOT ORDER INDIVIDUAL LETTERS AT A LATER DATE)			
200 Piece Set of 8 ON 9 ADM Letters			
E	14	F G H M B C D	6 Each
A I	12 Each	J K V W Y Z	4 Each
O U	10 Each	Q X \$ ¢ 0 1 2 3 4 5 6 7 8 9	2 Each
L N R S T P	8 Each		

**INITIAL LAYOUT:**  
December 1, 2021  
**REVISIONS:**  
I 010622  
II -  
III -  
IV -  
V -

**Sq. Ft. Signage:**  
46.64  
**Signage Allowance:**  
47.00 Sq. Ft.  
92" Height Max  
CC NTE 50% of Sign Area

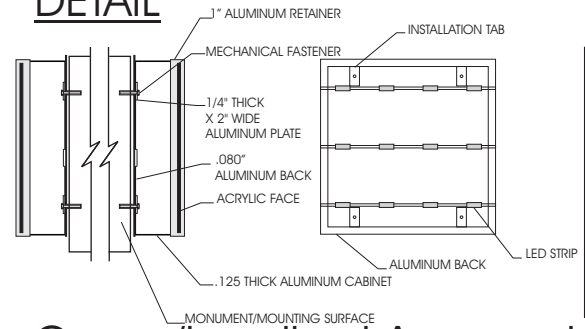
**Side**

**Elevation**

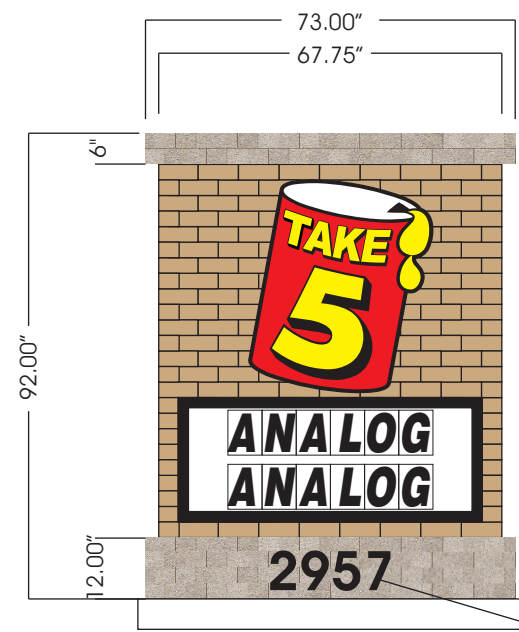
PAINTED  
Stonebriar  
w/ a Stucco  
Texture

LIMESTONE  
Base and Cap

DETAIL



**NOTE:  
MASONRY MONUMENT  
HANDLED BY CLIENT/GC  
-ELECTRICAL ACCESS  
MADE AVAILABLE FOR  
CABINET INSTALLATION  
OR HANDLED ENTIRELY  
BY GC/ELECTRICIAN**



46.64 Sq. Ft.

Address  
8" Tall  
1" PVC  
Painted Black

QTY: 2 Cans and Boards

**SPECIFICATIONS**  
**SINGLE-SIDED ILLUMINATED  
CABINETS**

- Size:**  
As in drawing
- Face Color:**  
As in drawing
- Vinyl Colors:**  
As in drawing
- Face**  
Flat
- Cabinet Interior:**  
Gloss White
- Cabinet Color:**  
Black
- Retainer:**  
1.5"
- Illumination:**  
LED
- Mounting:**  
Directly to Masonry

Owner/Landlord Approval \_\_\_\_\_

**SIGNS UNLIMITED**  
communicate your identity

6801 Mount Hermon Church Rd, Ste C, Durham, NC 27705 • (P) 919-552-8689 • (F) 919-557-1322



# TAKE 5

## OIL CHANGE

2957 Kirk Rd  
Aurora, IL 60502



Underwriters Laboratories Inc. •  
UL File #E225670

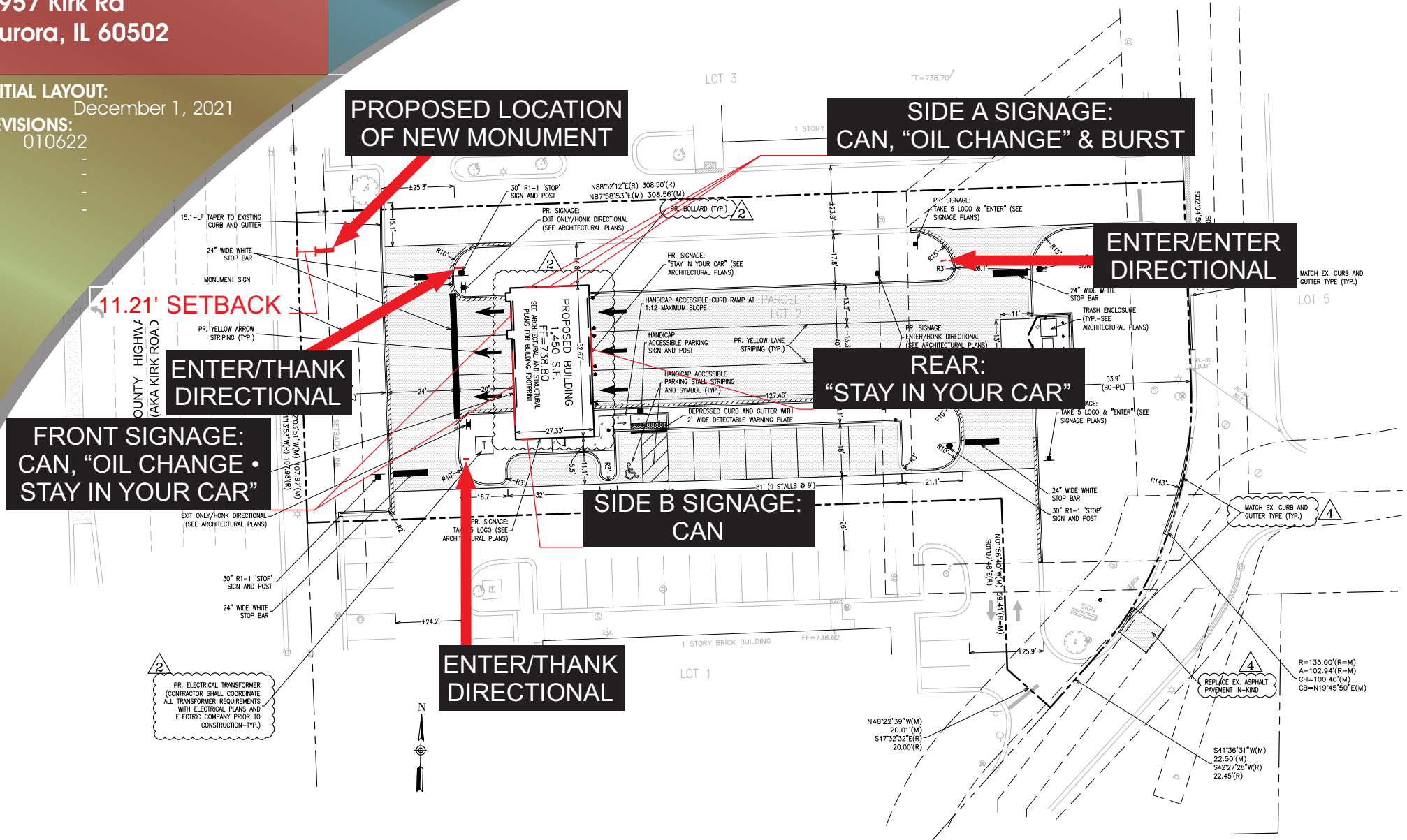
Copyright Notice ©

This drawing and all  
reproductions thereof are the property  
of Signs Unlimited, Inc. and  
may not be reproduced, published,  
changed or used in any way without  
written consent.

INITIAL LAYOUT:  
December 1, 2021

REVISIONS:  
010622

I  
II  
III  
IV  
V



Owner/Landlord Approval

6801 Mount Hermon Church Rd, Ste C, Durham, NC 27705 • (P) 919-552-8689 • (F) 919-557-1322

**SIGNS UNLIMITED**  
communicate your identity