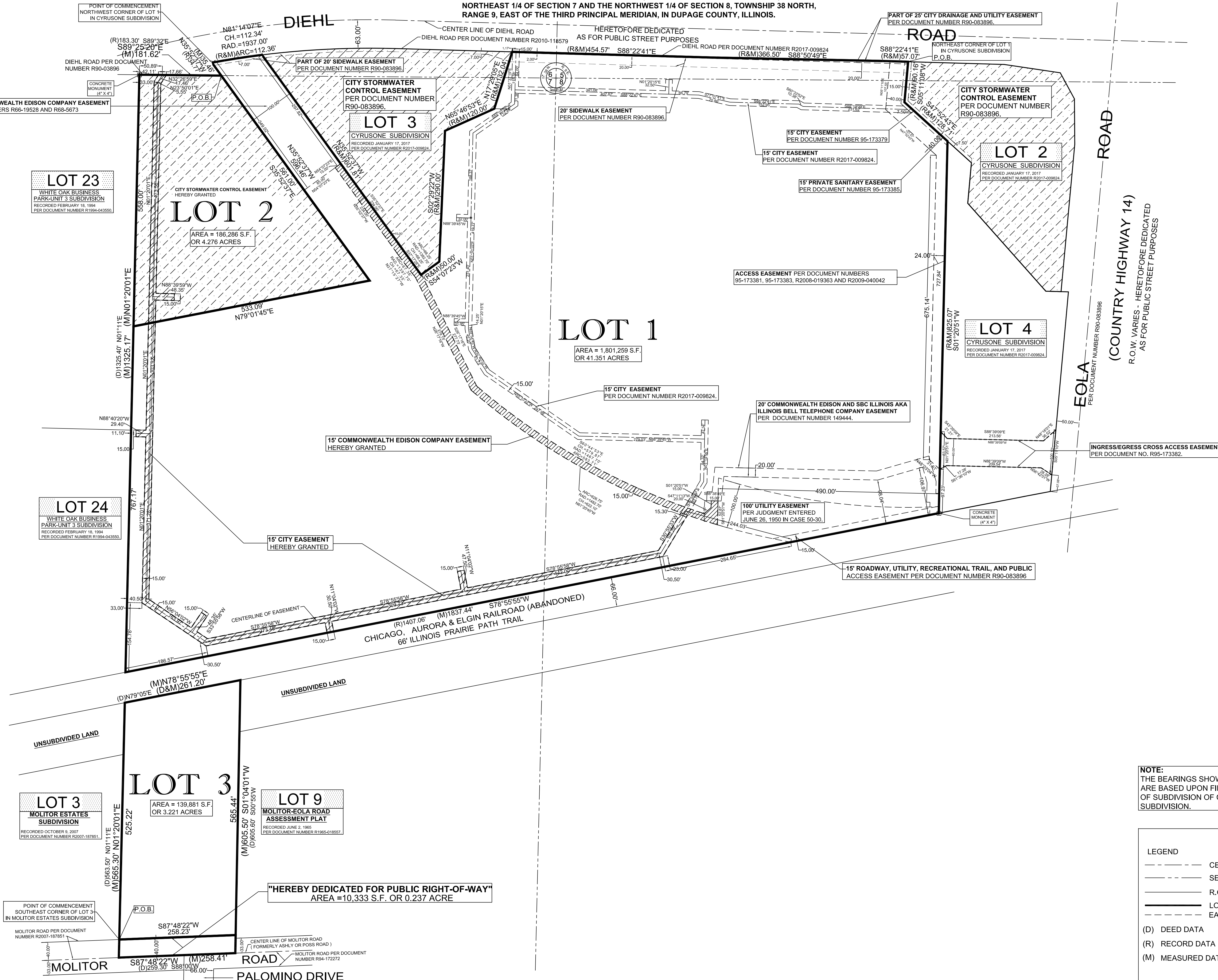
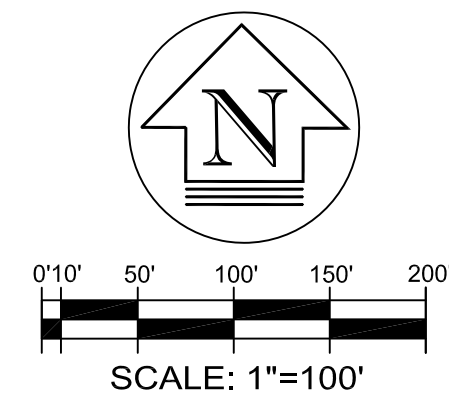


PRELIMINARY PLAT FOR CYRUSONE SUBDIVISION - PHASE 2

City Resolution: _____ Passed on: _____

OF PART OF THE SOUTHWEST 1/4 OF SECTION 5, THE SOUTHEAST 1/4 OF SECTION 6, THE
NORTHEAST 1/4 OF SECTION 7 AND THE NORTHWEST 1/4 OF SECTION 8, TOWNSHIP 38 NORTH,
RANGE 9, EAST OF THE THIRD PRINCIPAL MERIDIAN, IN DUPAGE COUNTY, ILLINOIS.



NOTE:
THE BEARINGS SHOWN HEREON
ARE BASED UPON FINAL PLAT
OF SUBDIVISION OF CYRUSONE
SUBDIVISION.

LEGEND

---	CENTER LINE
---	SECTION LINE
---	R.O.W. LINE
---	LOT LINE
---	EASEMENT LINE

(D) DEED DATA
(R) RECORD DATA
(M) MEASURED DATA

NO.	REVISIONS	DATE
1	CITY COMMENTS DATED 7/24/17	7/28/17
2		
3		
4		
5		
6		

PLAT PREPARED BY:
UNITED SURVEY SERVICE, LLC
CONSTRUCTION AND LAND SURVEYORS
2100 N. 15TH AVENUE, SUITE C, MELROSE PARK, IL 60160 - 1017
TEL.: (847) 299 - 1010 FAX: (847) 299 - 5887
E-MAIL: USURVEY@USANDCS.COM

PETITIONER:
CYRUSONE
JUAN VASQUEZ
2905 DIEHL ROAD
AURORA, IL 60502
PHONE: (331) 200 - 7954

PROJECT No.:
2017-22946-9

ISSUE DATE:
6/13/17

SCALE: 1"=100'

SHEET NUMBER
1 OF 1