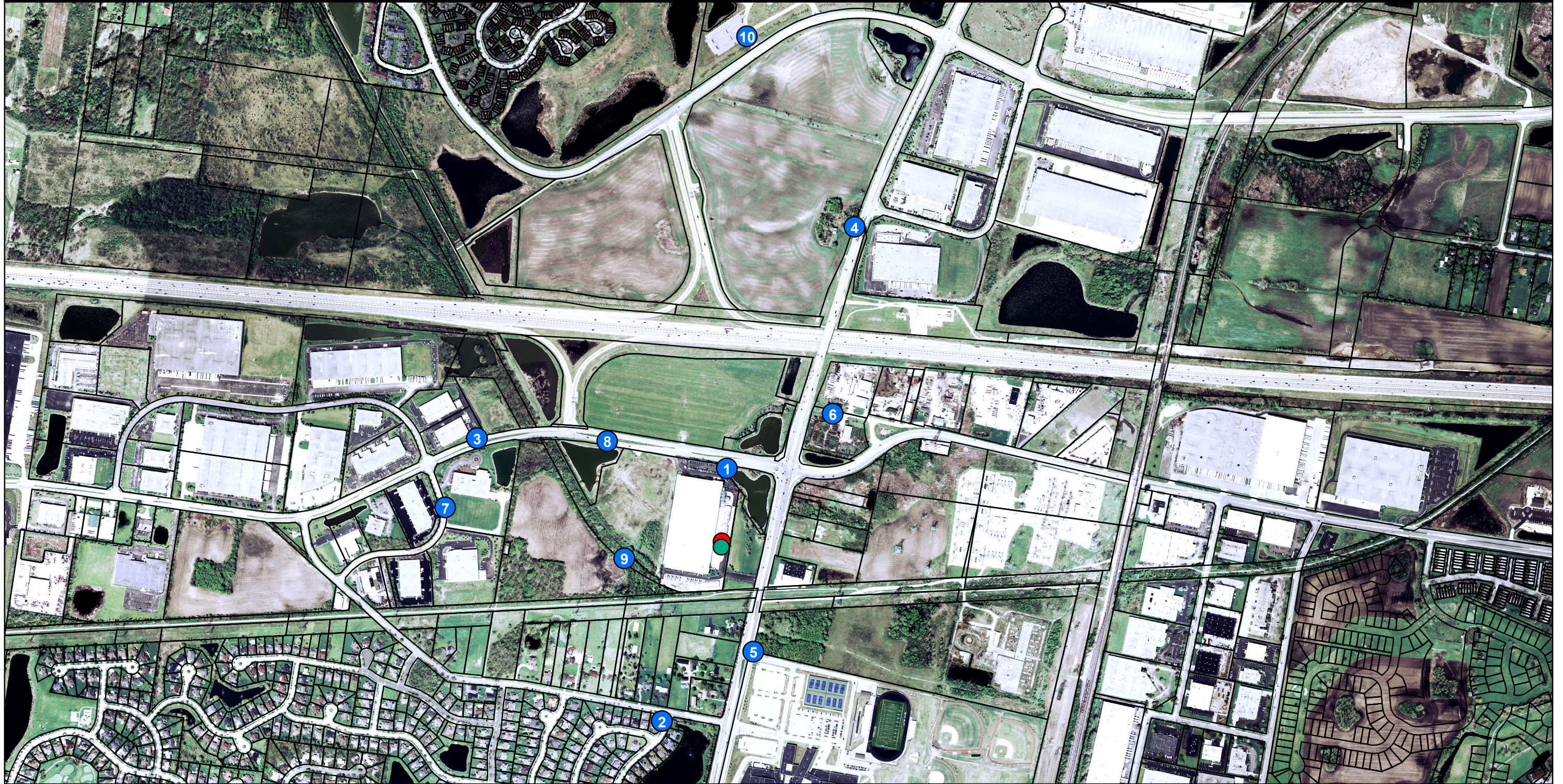





Photo Simulation Key Map  
2905 Diehl Road  
Aurora, IL 60502



**Legend**

-  Picture Locations
-  Existing Tower
-  Proposed Tower



0 400 800  
Feet

**ricciplanning**

Paul Ricci, AICP, PP  
177 Monmouth Avenue  
Atlantic Highlands, NJ 07716  
908.642.0070  
Fax 350.4501  
paul@ricciplanning.com

## Existing View



Existing view from location #1 approximately 600 feet south of the site.



Existing 350' Tower

Proposed 300' Tower

Simulated view from location #1 approximately 600 feet south of the site.



Existing view from location #2 approximately 1,520 feet southwest of the site.



Simulated view from location #2 approximately 1,520 feet southwest of the site.

Existing View



Existing view from location #3 approximately 2,950 feet west of the site.



Simulated view from location #3 approximately 2,950 feet west of the site.

## Existing View



Existing view from location #4 approximately 2,850 feet northeast of the site.





Simulated view from location #4 approximately 2,850 feet northeast of the site.

Existing View



Existing view from location #5 approximately 820 feet south of the site.



Simulated view from location #5 approximately 820 feet south of the site.

Existing View



Existing view from location #6 approximately 1,280 feet northeast of the site.



Simulated view from location #6 approximately 1,280 feet northeast of the site.

## Existing View



Existing view from location #7 approximately 2,210 feet west of the site.



Simulated view from location #7 approximately 2,210 feet west of the site.

Existing View



Existing view from location #8 approximately 2,300 feet west of the site.





Simulated view from location #8 approximately 2,300 feet west of the site.

Existing View



Existing view from location #9 approximately 820 feet west of the site.



Simulated view from location #9 approximately 820 feet west of the site.

## Existing View



Existing view from location #10 approximately 3,950 feet north of the site.



Simulated view from location #10 approximately 3,950 feet north of the site.