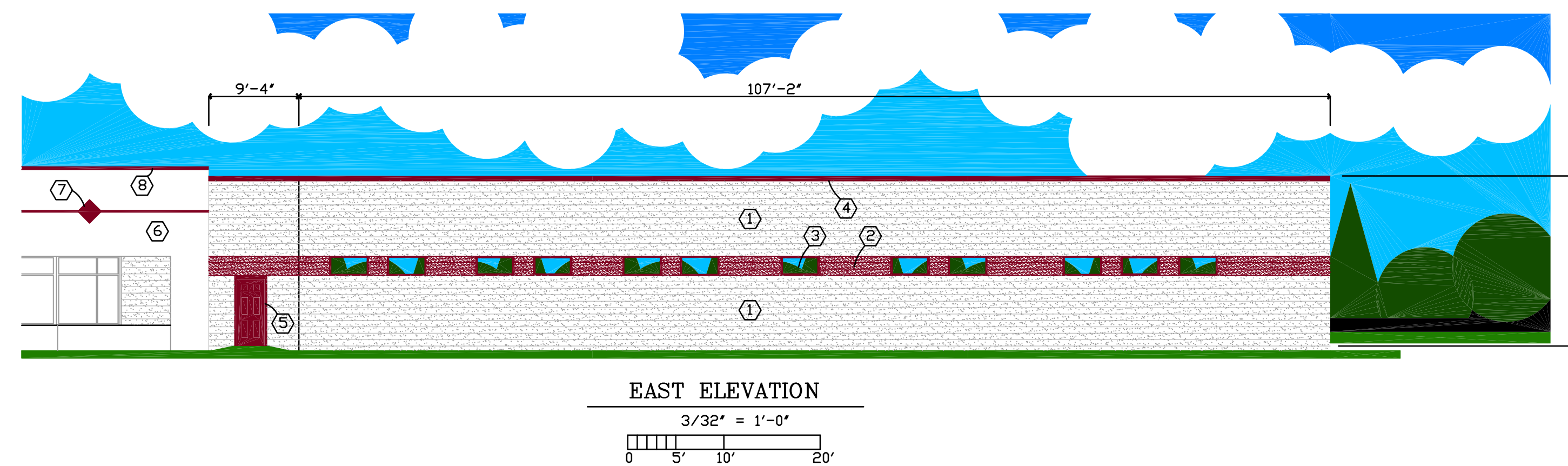
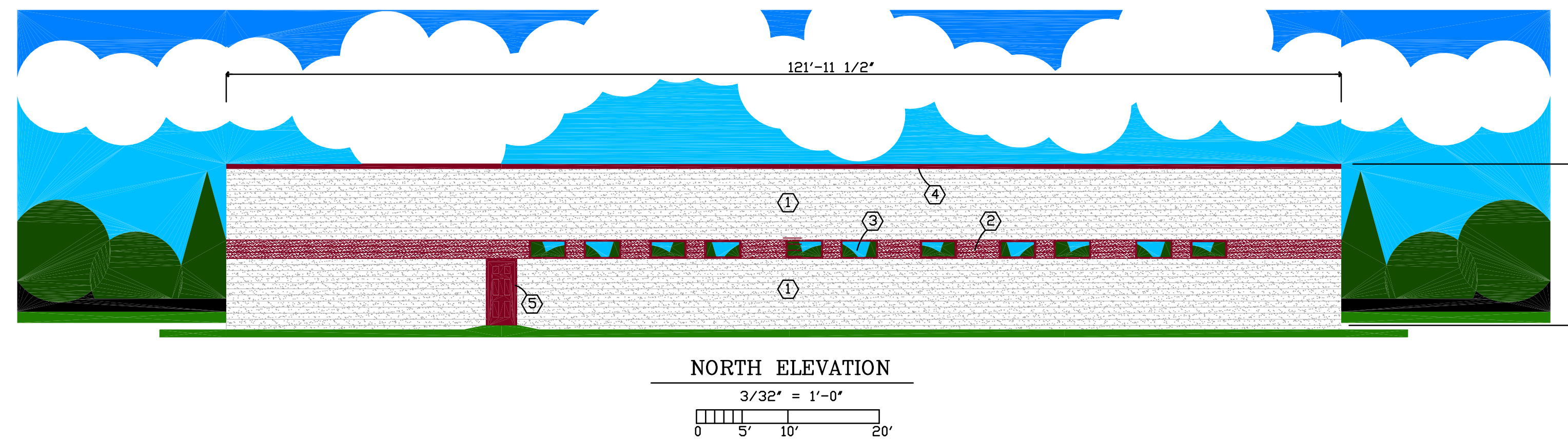
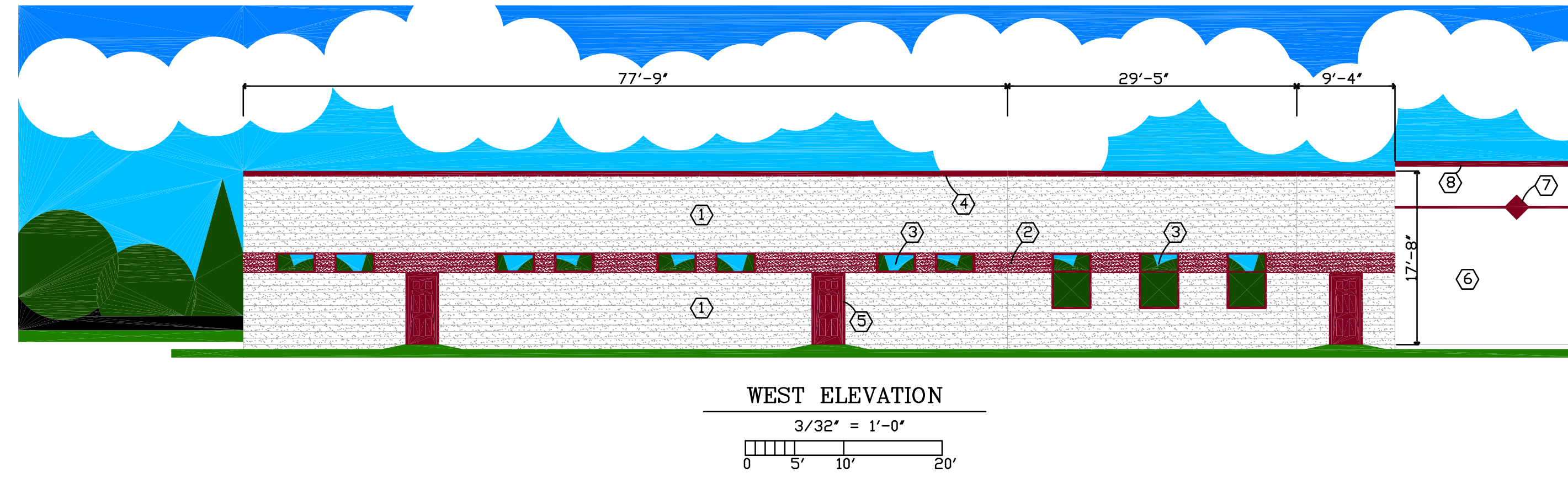


# ELEVATIONS



ELEVATION DATA TABLE : ELEVATIONS		
DESCRIPTION	VALUE	UNIT
a) Building height in feet (typical)	17.67	feet
b) Total Building Square Footage (typical)	10,932	square feet
c) First Floor Square Footage (typical)	10,932	square feet
d) Number of building stories (typical)	1.00	story

MATERIALS LEGEND	
①	WHITE SPLIT FACE CONCRETE BLOCK
②	SPLIT FACE CONCRETE BLOCK PAINTED MAROON ACCENT COLOR
③	1" INSULATING GLASS IN THERMALLY BROKEN ALUMINUM FRAMES WITH MAROON KYNER FINISH
④	ALUMINUM CAP FLASHING WITH MAROON ACCENT COLOR FINISH
⑤	SIX PANEL HOLLOW METAL DOOR IN HOLLOW METAL FRAME
⑥	PRECAST CONCRETE EXISTING BUILDING PAINTED WHITE
⑦	EXISTING MAROON ACCENT FEATURE
⑧	EXISTING MAROON CAP FLASHING

job no.

879 elm st.  
sugar grove, illinois  
(630) 841-8643

consultants

project / owner

revisions

date

JUNE 15, 2016

drawing title

ELEVATIONS

dwg. no.

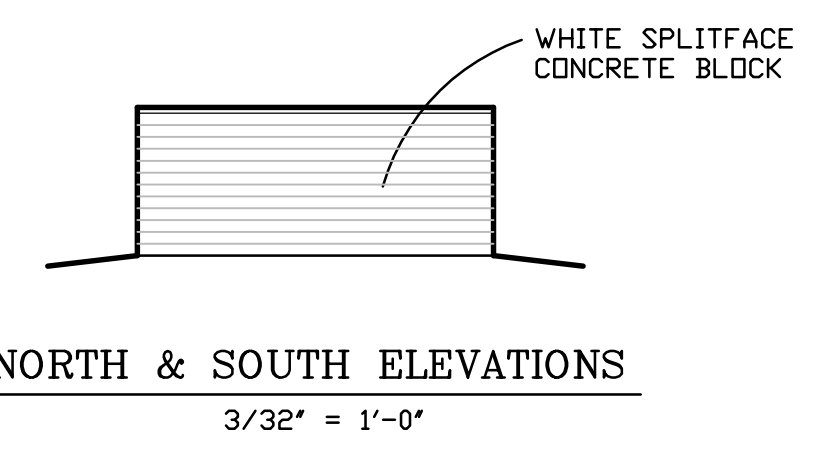
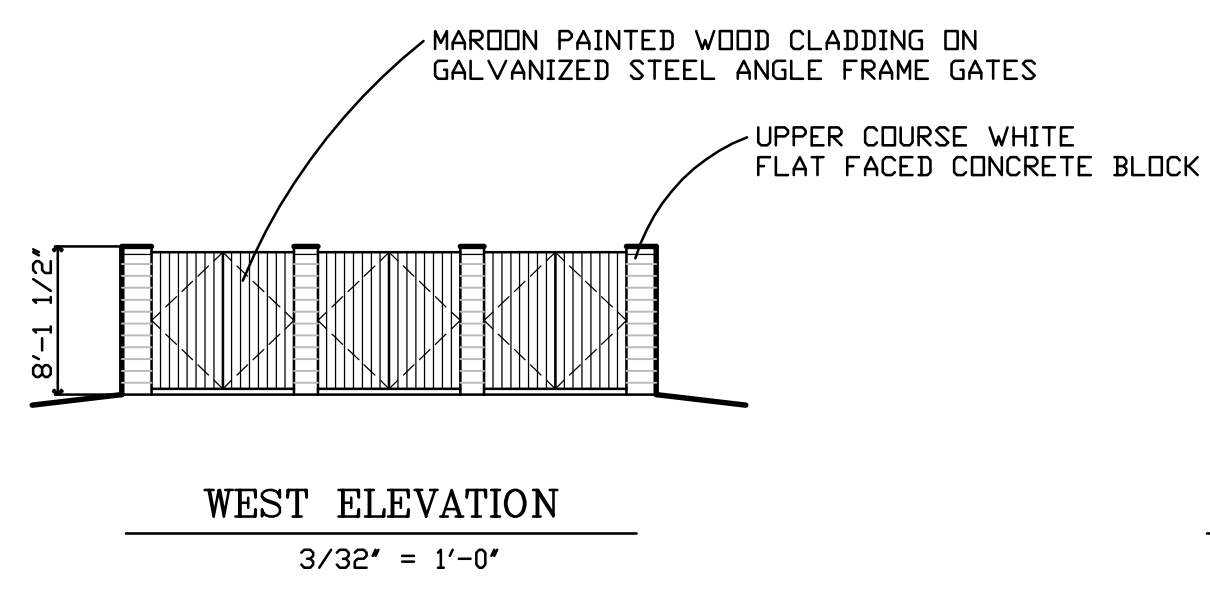
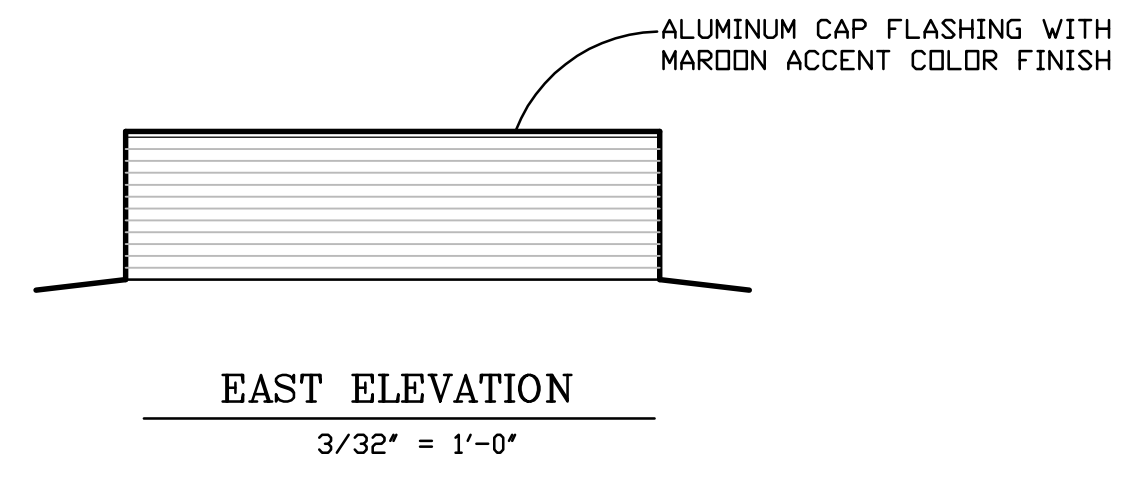
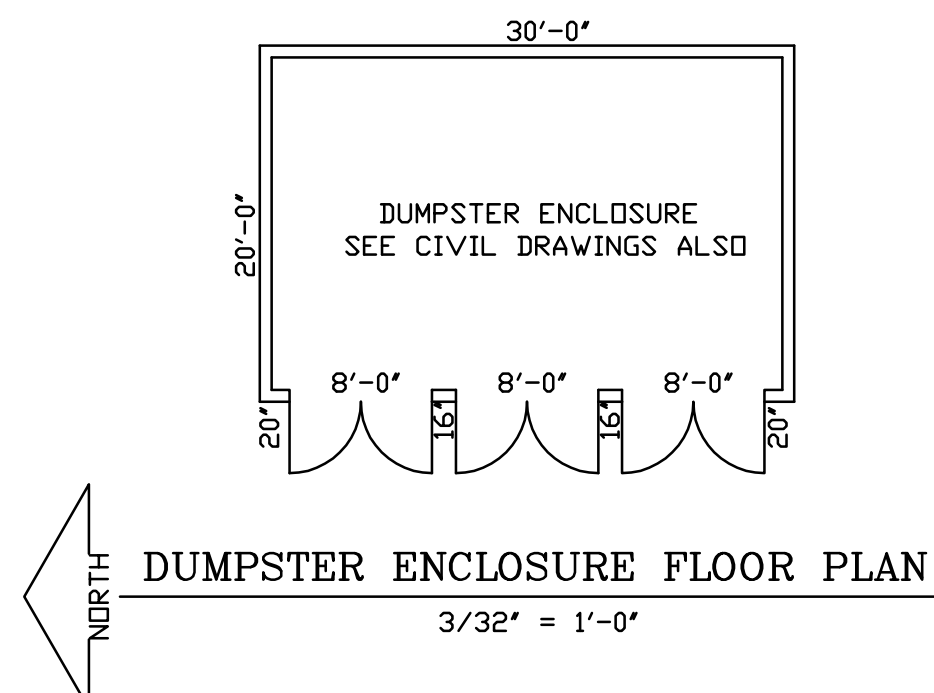
SEQ  
A2

ARCHITECT

D.S. WELLS

998 CORPORATE BLVD., AURORA, ILLINOIS

ADDITION TO  
YOUTH & FAMILY SERVICES  
AURORA FACILITY



job no.

879 elm st.  
sugar grove, illinois  
(630) 841-8643



consultants

ADDITION TO  
SEQUEL YOUTH & FAMILY SERVICES  
AURORA FACILITY  
998 CORPORATE BLVD., AURORA, ILLINOIS

project / owner

revisions

date  
JUNE 17, 2016

drawing title  
DUMPSTER ENCLOSURE

dwg. no.  
SEQ  
A3

D.S. WELLS - ARCHITECT