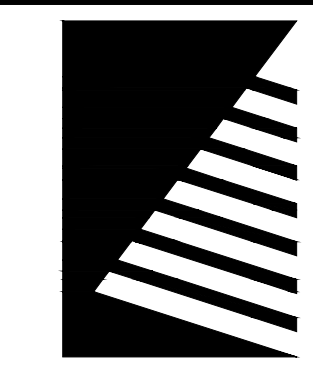


PRELIMINARY PLAT OF QT 4448 ADDITION

PART OF THE SW 1/4 OF SECTION 5 AND PART OF THE NW 1/4 SEC 8 TOWNSHIP 38 NORTH,
RANGE 9 EAST OF THE 3RD PRINCIPAL MERIDIAN
CITY OF AURORA, DuPAGE COUNTY, ILLINOIS

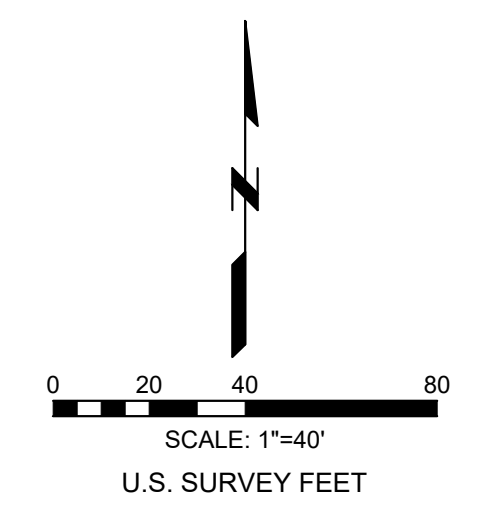


**Farnsworth
GROUP**

2211 WEST BRADLEY AVENUE
CHAMPAIGN, ILLINOIS 61821
(217) 352-7408 / info@f-w.com

www.f-w.com
Engineers | Architects | Surveyors | Scientists

ISSUE:
DATE: DESCRIPTION:



BASIS OF BEARINGS IS ILLINOIS STATE PLANE COORDINATE SYSTEM,
EAST ZONE, NAD 83, 2011 ADJUSTMENT

LEGEND

- SUBJECT PROPERTY BOUNDARY
- PARCEL LINE
- EASEMENT LINE
- SET CONCRETE MONUMENT

SUBMITTED BY / RETURN TO

QUIKTRIP
C/O ALI BUKHRES
MAIN STREET PROMENADE
50 SOUTH MAIN STREET
SUITE 200
NAPERVILLE, IL 60540

EASEMENT CURVE TABLE				
CURVE	RADIUS	LENGTH	CHORD	CHORD BEARING
C1	60.50'	60.13'	57.68'	N24°40'40"W
C2	49.50'	49.20'	47.20'	S24°40'40"E
C3	64.50'	75.99'	71.67'	S37°32'40"W
C4	52.50'	61.87'	58.35'	S37°31'53"W
C5	97.50'	114.91'	108.37'	N37°31'53"E

Development Data Table: Preliminary Plat		
Description	Value	Unit
a) Tax/Parcel Identification Number(s) (P/Ns): 07-05-304-012, 07-08-103-022, 07-08-103-023, 07-08-103-024		
b) Subdivided Area	5.99	Acres
	261091	Square Feet
c) Proposed New Right-of-way	0	Acres
	-	Square Feet
	0	Linear Feet of Centerline
d) Proposed New Easements	3.277823691	Acres
	142.782	Square Feet

PETITIONER

QUIKTRIP
C/O ALI BUKHRES
MAIN STREET PROMENADE
50 SOUTH MAIN STREET
SUITE 200
NAPERVILLE, IL 60540

PROJECT:

QT 4448 ADDITION

AURORA, ILLINOIS

DATE: 03/20/2025

DESIGNED: PEB

DRAWN: PDM

REVIEWED:

FIELD BOOK NO.: PIA 196/20

SHEET TITLE:

PRELIMINARY PLAT

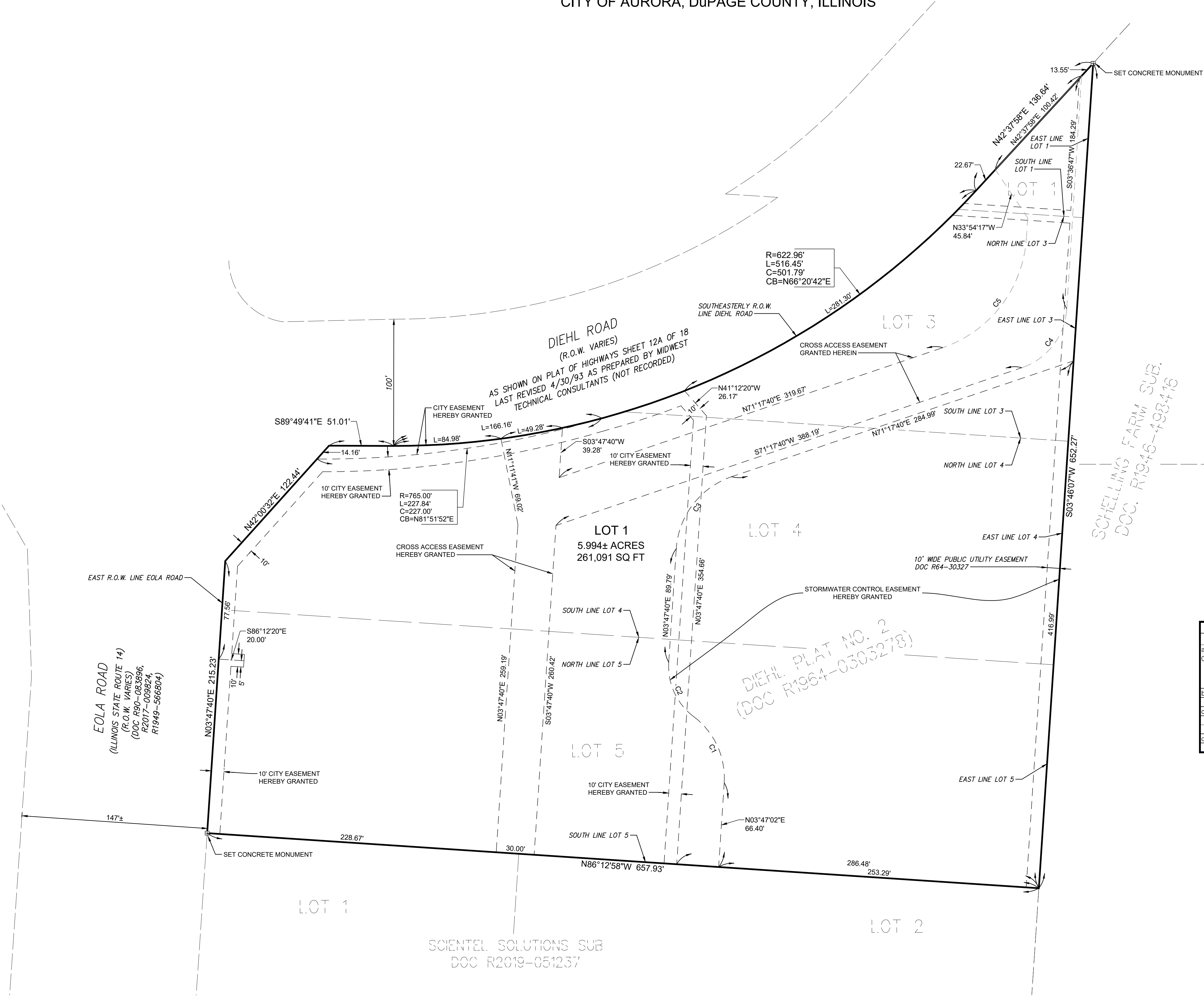
SHEET NUMBER:

1

OF 1

PROJECT NO.: 0240667.00

I:\marcos\13\2024\0240667.00 - QuikTrip Aurora IL #4448\Survey\07_Drawings\SV_Preliminary Plat - 0240667.00.dwg | 3/20/2025 2:01 PM |



SCIENTEL SOLUTIONS SUB
DOC R2019-051237

DIEHL PLAT NO. 2
(DOC R1964-0303278)

SCHELLING FARM SUB.
DOC. R1946-498416