

ELEVATIONS

ELEVATION LEGEND

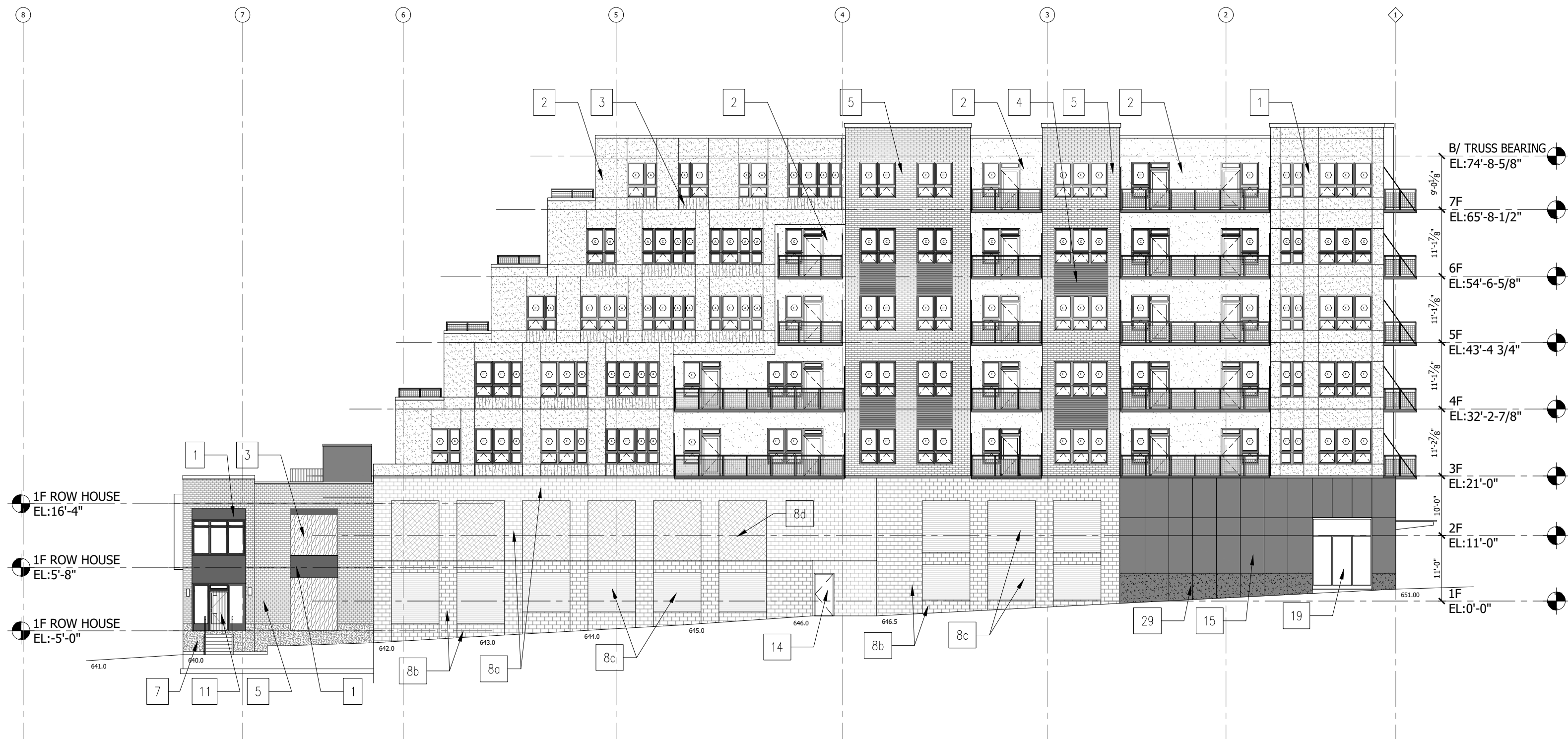
GENERAL ELEVATION NOTES:			
1. PROVIDE SEALANT AROUND ALL EXTERIOR OUTLETS, HOSE BIBS, LIGHT FIXTURE MOUNTING PLATES.			
2. SEE STRUCTURAL DRAWINGS FOR LIMITS OF FOUNDATIONS AND RECESSED SLABS.			
3. ALL NEW EXTERIOR ALUMINUM STOREFRONT AND DOORS TO HAVE TINTED LOW-E INSULATED GLASS (TYPICAL UNO)- SEE GLAZING SPEC'S.			
4. PAINT ALL EXPOSED STEEL LINTELS.			
5. C.J. = CONTROL JOINT			
6. SEE DETAILS SHEET A06.21 - A06.23 FOR TYPICAL BUILDING DETAILS.			
7. FC-1 = FIBER CEMENT PANELIZED SYSTEM FC-2 = FIBER CEMENT PANELIZED SYSTEM WP = WOOD PANELING SYSTEM FB-1 =FULL DEPTH FACE BRICK MP = METAL PANEL SYSTEM			
8. SEE SHEET A03.10 & A03.20 FOR WINDOW SCHEDULE.			
1	DARK GRAY FIBER CEMENT PANEL	10	LIGHT GRAY STONE BAND
2	LIGHT GRAY FIBER CEMENT PANEL	11	WALNUT ENTRY DOOR
3	WOOD-LOOK METAL PANEL	12	LIGHT GRAY CONCRETE STEPS
4	LINEAR TEXTURE FIBER CEMENT PANEL	13	PRE-FINISHED HVAC INTAKE LOUVER - SEE MECH. DWG'S - DARK GRAY LOUVER
5	FACE BRICK - CREAM COLOR	14	HOLLOW METAL DOOR & THERMALLY BROKEN FRAME - SEE DOOR SPEC'S & SCHEDULE
6	FACE BRICK - SMOKEY GRAY	15	METAL PANEL CLADDING
7	LIGHT GRAY CONCRETE	16	PROJECT BUILDING SIGNAGE
8a	PRECAST CONCRETE, 8x16 PATTERN, CHARCOAL	17	PARKING GARAGE SIGNAGE
8b	PRECAST CONCRETE, 8x16 PATTERN, CREAM	18	OVERHEAD INSULATED GARAGE DOOR SEE SCHEDULE & SPEC'
8c	PRECAST PANEL WITH LINIER FORM LINER, CHARCOL	19	PREF-FINISH ALUM. STOREFRONT SYSTEM W/ INSULATED GLAZING
8d	METAL SCREEN WITH DECORATIVE PATTERN		
9	42" HIGH GUARDRAIL SYSTEM	20	CAST STONE SILL
		21	FIRE PROTECTION STROBE/HORN
		22	OVERFLOW ROOF DRAIN DISCHARGE
		23	STEEL BOLLARD - PAINT
		24	CAST STONE CAP
		25	OVERFLOW NOZZLE, PLUMBING DWG'S
		26	LIGHT FIXTURE - SEE ELEC DWG'S
		27	PRE-FINISH ALUMINUM FLASHING
		28	SIAMESE CONNECTION W/ ALARM & STROBE
		29	PRECAST PANEL TO MATCH METAL CLADDING IN COLOR, AND JOINT LINE SIZE, SHAPE AND LOCATION.

Elevation Data Table: Elevations		
Description	Value	Unit
a) Building Height in feet (typical)	79.00	feet
b) Total Building Square Footage (typical)	304,408.00	Square Feet
c) First Floor Building Square Footage (typical)	71,890.00	Square Feet
d) Number of building stories (typical)	7.00	Square Feet
e) Exterior Material List (including colors) for all		
High-density fiber cement - dark gray, High-density fiber cement - light gray, High-density fiber cement - textured gray, Phenolic or ACM Panel - wood look, Brick - cream, Brick - smoke gray, Metal Panel - dark gray, Pre-Cast Conc. - 8x16 masonry - charcoal color, Pre-Cast Conc. - 8x16 masonry - cream color		

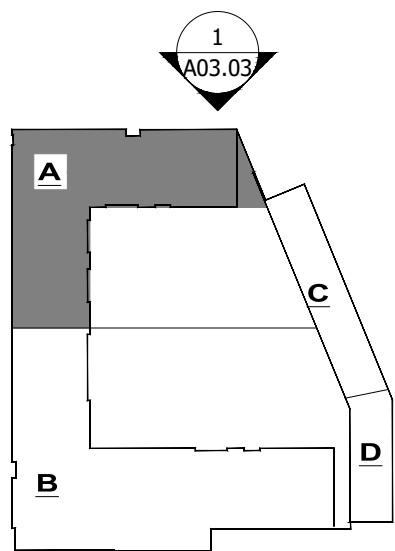
MATERIAL LIST	RowHouses			Apartments / Retail			(SF) TOTALS:	(%) TOTAL:
	East:	North:	South:	North:	South:	West:		
HIGH-DENSITY FIBER CEMENT - DARK	1,044	95	197			1,335	4,382	7,053
HIGH-DENSITY FIBER CEMENT - LIGHT	845			1,966	2,392			5,203
HIGH-DENSITY FIBER CEMENT - TEXTURED				1,780	2,498	3,763		8,041
WOOD LOOK - PHENOLIC OR ACM	573	127		1,591	2,193	97	1,216	5,797
BRICK - CREAM				1,276	3,746	7,092		12,114
BRICK - SMOKE GREY	1,878	431	493			1,765		4,567
PRE-CAST CONC. - BRICK LOOK				1,511	1,176	676	647	4,010
METAL PANEL - DARK GRAY				632	1,255	1,208		3,095
PRE-CAST CONC. - TO MATCH METAL PANEL				147	125	45		317
GLAZING	1,739	77	72	2,906	4,486	8,741	1,714	19,735
TOTAL (SF)	6,079	730	762	11,809	19,636	22,957	7,959	69,932

MATERIAL TYPE	
MASONRY (INCLUDING BRICK LOOK PRE-CAST)	23.9%
PRE-CAST (BRICK-LOOK)	5.7%
PRECAST (MTL PANEL LOOK)	0.5%
METAL PANEL	4.4%
PHENOLIC OR ACM PANEL (WOOD-LOOK)	8.3%
HIGH-DENSITY FIBER CEMENT PANEL	29.0%
GLAZING	28.2%
	100.0%

NOTES:
1. ALL ROOF DRAIN TO RUN INTERNALLY, NO EXTERIOR DOWNSPOUTS.
2. ALL SIGNAGE TO MEET THE AURORA SIGN ORDINANCE.



1 PARTIAL NORTH EXTERIOR ELEVATION
SCALE: 1/16" = 1'-0"



WARNING!!!
Unauthorized use or copying of these Plans, in whole or in part, for any project other than that for which they were prepared, is prohibited. The user assumes responsibility to verify if reproduction of this document has been enlarged or reduced from original.

NOTES: BUILDING DEPARTMENT
These documents (plans & specifications) are valid for permits only when the architect's original seal and signature appears and is affixed; and unless otherwise provided in writing, are intended as a permit submittal for one (1) building only.
© 2023 Robert Juris and Associates Architects, Ltd.

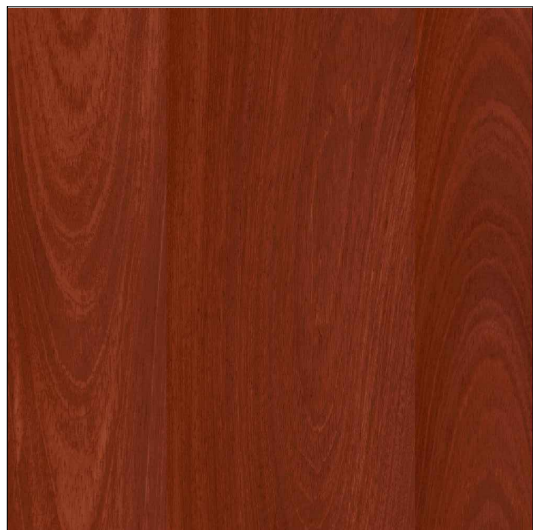
XX/XX/2023
DATE
JONATHAN R. MURAWSKI
001.022816
EXPIRES 11-30-2024
SIGNATURE



1 - HIGH-DENSITY FIBER CEMENT



2 - HIGH-DENSITY FIBER CEMENT



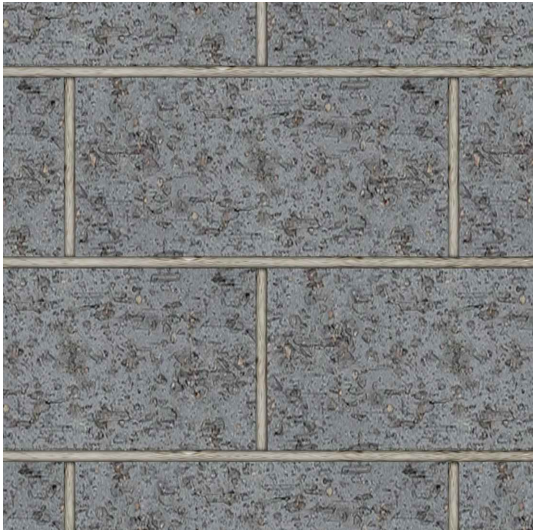
3 - PANEL: WOOD LOOK



4 - HIGH-DENSITY FIBER CEMENT



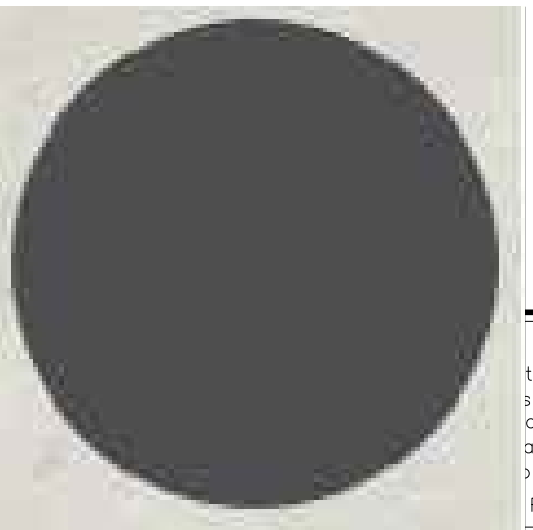
5 - BRICK: CREAM COLOR



8a - PRE-CAST CONC.: BLOCK PATTERN



8b - PRE-CAST CONC.: BLOCK PATTERN



15 - PANEL: DUSTY CHARCOAL

ROBERT JURIS & ASSOCIATES ARCHITECTS, LTD.

9500 BORMET DRIVE, SUITE #205
MOKENA, IL 60448
(815) 806-0146
www.rjaarchitects.com

JONATHAN R. MURAWSKI, AIA, NCARB
IL. LICENSE NUMBER: 001-022816

PROFESSIONAL DESIGN FIRM REGISTRATION:
STATE OF ILLINOIS CORPORATE LICENSE #184-000167

ELECTRONIC FILE WARNING

Errors may occur in transmission of electronic files. Robert Juris & Associates, Ltd. is not responsible for any claims, damages or expenses arising out of the use of the information contained in electronic files.

Electronic files may not accurately reflect the final design conditions. It is the responsibility of the user to verify all layouts, dimensions, and other related information.

DESIGN CONSULTANT:

1135 N. California Ave. Chicago, IL 60622 T: +1 312 488 9180

NOT FOR CONSTRUCTION

- PLANING AND ZONING REVIEW	04/25/2023
- PLANING AND ZONING REVIEW	04/21/2023
- PLANING AND ZONING REVIEW	03/23/2023
No. ISSUES & REVISIONS	DATE

CLIENT
PACIFICA RIVERVIEW DEVELOPMENT

PROJECT
NEW CONSTRUCTION

ADDRESS
NORTH RIVER STREET AURORA, IL

EXTERIOR ELEVATIONS

© 2023 Robert Juris & Associates Architects, Ltd.
These plans are protected under the copyright laws of the United States and foreign countries, and are to be used only for the construction and repair and remodeling of the structure or structures defined in the contract between the Architect and the Owner. Any use of these plans to construct, remodel or repair additional structures constitutes a violation of the Architect's copyright of these plans and is prohibited.

GRAPHIC SCALE:
0 1 2 3
Note: The original document was created with the above graphic scale at full size, (i.e. 1"=1'-0"). The user assumes responsibility to verify if reproduction of this document has been enlarged or reduced from original.

Project No.: 22068
Drawn By: NS
Checked By: JRM

SHEET NUMBER
A-10

ELEVATIONS

ELEVATION LEGEND

GENERAL ELEVATION NOTES:

1. PROVIDE SEALANT AROUND ALL EXTERIOR OUTLETS, HOSE BIBS, LIGHT FIXTURE MOUNTING PLATES.
2. SEE STRUCTURAL DRAWINGS FOR LIMITS OF FOUNDATIONS AND RECESSED SLABS.
3. ALL NEW EXTERIOR ALUMINUM STOREFRONT AND DOORS TO HAVE TINTED LOW-E INSULATED GLASS (TYPICAL UNO)-SEE GLAZING SPEC'S.
4. PAINT ALL EXPOSED STEEL LINTELS.
5. C.J. = CONTROL JOINT
6. SEE DETAILS SHEET A06.21 - A06.23 FOR TYPICAL BUILDING DETAILS.
7. FC-1 = FIBER CEMENT PANELIZED SYSTEM
FC-2 = FIBER CEMENT PANELIZED SYSTEM
WP = WOOD PANELING SYSTEM
FB-1 = FULL DEPTH FACE BRICK
MP = METAL PANEL SYSTEM
8. SEE SHEET A03.10 & A03.20 FOR WINDOW SCHEDULE.

- 1 DARK GRAY FIBER CEMENT PANEL
- 2 LIGHT GRAY FIBER CEMENT PANEL
- 3 WOOD-LOOK METAL PANEL
- 4 LINEAR TEXTURE FIBER CEMENT PANEL
- 5 FACE BRICK - CREAM COLOR
- 6 FACE BRICK - SMOKEY GRAY
- 7 LIGHT GRAY CONCRETE
- 8a PRECAST CONCRETE, 8x16 PATTERN, CHARCOAL
- 8b PRECAST CONCRETE, 8x16 PATTERN, CREAM
- 8c PRECAST PANEL WITH LINER FORM LINER, CHARCOAL
- 8d METAL SCREEN WITH DECORATIVE PATTERN
- 9 42" HIGH GUARDRAIL SYSTEM

- 10 LIGHT GRAY STONE BAND
- 11 WALNUT ENTRY DOOR
- 12 LIGHT GRAY CONCRETE STEPS
- 13 PRE-FINISHED HVAC INTAKE LOUVER - SEE MECH. DWG'S - DARK GRAY LOUVER
- 14 HOLLOW METAL DOOR & THERMALLY BROKEN FRAME - SEE DOOR SPEC'S & SCHEDULE
- 15 METAL PANEL CLADDING
- 16 PROJECT BUILDING SIGNAGE
- 17 PARKING GARAGE SIGNAGE
- 18 OVERHEAD INSULATED GARAGE DOOR SEE SCHEDULE & SPEC
- 19 PREF-FINISH ALUM. STOREFRONT SYSTEM W/ INSULATED GLAZING

- 20 CAST STONE SILL
- 21 FIRE PROTECTION STROBE/HORN
- 22 OVERFLOW ROOF DRAIN DISCHARGE
- 23 STEEL BOLLARD - PAINT
- 24 CAST STONE CAP
- 25 OVERFLOW NOZZLE, PLUMBING DWG'S
- 26 LIGHT FIXTURE - SEE ELEC DWG'S
- 27 PRE-FINISH ALUMINUM FLASHING
- 28 SIAMESE CONNECTION W/ ALARM & STROBE
- 29 PRECAST PANEL TO MATCH METAL CLADDING IN COLOR, AND JOINT LINE SIZE, SHAPE AND LOCATION.

Elevation Data Table: Elevations

Description	Value	Unit
a) Building Height in feet (typical)	79.00	feet
b) Total Building Square Footage (typical)	304,408.00	Square Feet
c) First Floor Building Square Footage (typical)	71,890.00	Square Feet
d) Number of building stories (typical)	7.00	Square Feet
e) Exterior Material List (including colors) for all		
High-density fiber cement - dark gray, High-density fiber cement - light gray, High-density fiber cement - textured gray, Phenolic or ACM Panel - wood look, Brick - cream, Brick - smoke gray, Metal Panel - dark gray, Pre-Cast Conc. - 8x16 masonry - charcoal color, Pre-Cast Conc. - 8x16 masonry - cream color		

MATERIAL LIST	RowHouses			Apartments / Retail			(SF) TOTALS:	(%) TOTAL:
	East:	North:	South:	North:	South:	West:	East:	
HIGH-DENSITY FIBER CEMENT - DARK	1,044	95	197			1,335	4,382	7,053 10.1%
HIGH-DENSITY FIBER CEMENT - LIGHT	845			1,966	2,392			5,203 7.4%
HIGH-DENSITY FIBER CEMENT - TEXTURED				1,780	2,498	3,763		8,041 11.5%
WOOD LOOK - PHENOLIC OR ACM	573	127		1,591	2,193	97	1,216	5,797 8.3%
BRICK - CREAM				1,276	3,746	7,092		12,114 17.3%
BRICK - SMOKE GREY	1,878	431	493			1,765		4,567 6.5%
PRE-CAST CONC. - BRICK LOOK				1,511	1,176	676	647	4,010 5.7%
METAL PANEL - DARK GRAY				632	1,255	1,208		3,095 4.4%
PRE-CAST CONC. - TO MATCH METAL PANEL				147	125	45		317 0.5%
GLAZING	1,739	77	72	2,906	4,486	8,741	1,714	19,735 28.2%
TOTAL (SF)	6,079	730	762	11,809	19,636	22,957	7,959	69,932 100.0%

MATERIAL TYPE

MASONRY (INCLUDING BRICK LOOK PRE-CAST)	23.9%
PRE-CAST (BRICK-LOOK)	5.7%
PRECAST (MTL PANEL LOOK)	0.5%
METAL PANEL	4.4%
PHENOLIC OR ACM PANEL (WOOD-LOOK)	8.3%
HIGH-DENSITY FIBER CEMENT PANEL	29.0%
GLAZING	28.2%
	100.0%

NOTES:

1. ALL ROOF DRAIN TO RUN INTERNALLY, NO EXTERIOR DOWNSPOUTS.
2. ALL SIGNAGE TO MEET THE AURORA SIGN ORDINANCE.



1 WEST EXTERIOR ELEVATION

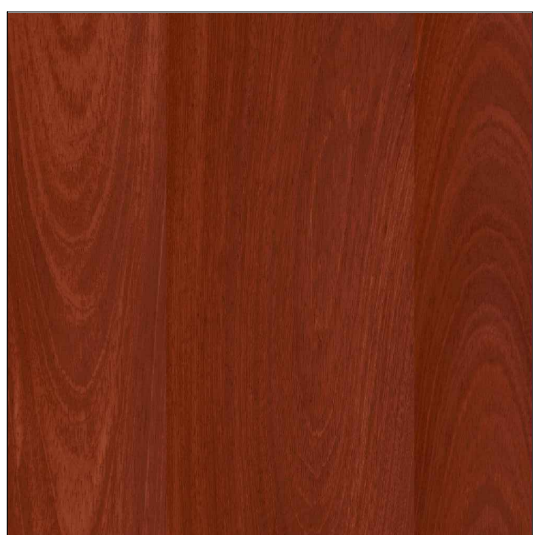
SCALE: 1/16" = 1'-0"



1 - HIGH-DENSITY FIBER CEMENT



2 - HIGH-DENSITY FIBER CEMENT



3 - PANEL: WOOD LOOK



4 - HIGH-DENSITY FIBER CEMENT



5 - BRICK: CREAM COLOR



8a - PRE-CAST CONC.: BLOCK PATTERN



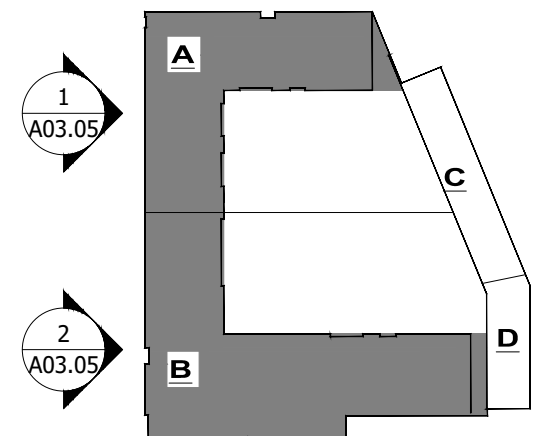
8b - PRE-CAST CONC.: BLOCK PATTERN



15 - PANEL: DUSTY CHARCOAL



KEYPLAN
NOT TO SCALE



WARNING!!!
These documents (plans & specifications) are valid for permits only when the architect's original seal and signature appears and is affixed; and unless otherwise provided in writing, are intended as a permit submittal for one (1) building only.
© 2023 Robert Juris and Associates Architects, Ltd.

NOTICE: BUILDING DEPARTMENT
These documents (plans & specifications) are valid for permits only when the architect's original seal and signature appears and is affixed; and unless otherwise provided in writing, are intended as a permit submittal for one (1) building only.
© 2023 Robert Juris and Associates Architects, Ltd.

XX/XX/2023

DATE



EXPIRES 11-30-2024

SIGNATURE

NOT FOR CONSTRUCTION

- PLANING AND ZONING REVIEW	04/25/2023
- PLANING AND ZONING REVIEW	04/21/2023
- PLANING AND ZONING REVIEW	03/23/2023
No. ISSUES & REVISIONS	DATE

CLIENT

PACIFICA RIVERVIEW DEVELOPMENT

PROJECT

NEW CONSTRUCTION

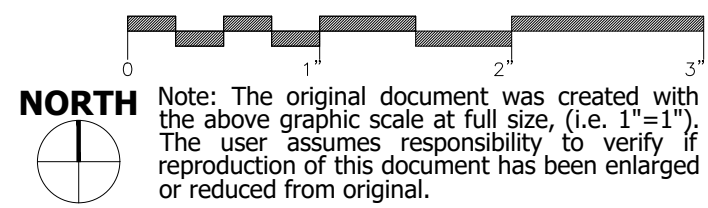
ADDRESS

NORTH RIVER STREET
AURORA, IL

EXTERIOR ELEVATIONS

© 2023 Robert Juris & Associates Architects, Ltd.
These plans are protected under the copyright laws of the United States and foreign countries, and are to be used only for the construction and repair and remodeling of the structure or structures defined in the contract between the Architect and the Owner. Any use of these plans to construct, remodel or repair additional structures constitutes a violation of the Architect's copyright of these plans and is prohibited.

GRAPHIC SCALE:



Project No.: 22068

Drawn By: NS

Checked By: JRM

SHEET NUMBER

A-11

ELEVATIONS

ELEVATION LEGEND

GENERAL ELEVATION NOTES:

1. PROVIDE SEALANT AROUND ALL EXTERIOR OUTLETS, HOSE BIBS, LIGHT FIXTURE MOUNTING PLATES.
2. SEE STRUCTURAL DRAWINGS FOR LIMITS OF FOUNDATIONS AND RECESSED SLABS.
3. ALL NEW EXTERIOR ALUMINUM STOREFRONT AND DOORS TO HAVE TINTED LOW-E INSULATED GLASS (TYPICAL UNO)- SEE GLAZING SPECS.
4. PAINT ALL EXPOSED STEEL LINTELS.
5. C.J. = CONTROL JOINT
6. SEE DETAILS SHEET A06.21 - A06.23 FOR TYPICAL BUILDING DETAILS.
7. FC-1 = FIBER CEMENT PANELIZED SYSTEM
FC-2 = FIBER CEMENT PANELIZED SYSTEM
WP = WOOD PANELING SYSTEM
FB-1 = FULL DEPTH FACE BRICK
MP = METAL PANEL SYSTEM
8. SEE SHEET A03.10 & A03.20 FOR WINDOW SCHEDULE.

- 1

DARK GRAY FIBER CEMENT PANEL
- 2

LIGHT GRAY FIBER CEMENT PANEL
- 3

WOOD-LOOK METAL PANEL
- 4

LINEAR TEXTURE FIBER CEMENT PANEL
- 5

FACE BRICK - CREAM COLOR
- 6

FACE BRICK - SMOKEY GRAY
- 7

LIGHT GRAY CONCRETE
- 8a

PRECAST CONCRETE, 8x16 PATTERN, CHARCOAL
- 8b

PRECAST CONCRETE, 8x16 PATTERN, CREAM
- 8c

PRECAST PANEL WITH LINER FORM LINER, CHARCOAL
- 8d

METAL SCREEN WITH DECORATIVE PATTERN
- 9

42" HIGH GUARDRAIL SYSTEM

10

LIGHT GRAY STONE BAND

11

WALNUT ENTRY DOOR

12

LIGHT GRAY CONCRETE STEPS

13

PRE-FINISHED HVAC INTAKE LOUVER - SEE MECH. DWG'S - DARK GRAY LOUVER

14

HOLLOW METAL DOOR & THERMALLY BROKEN FRAME - SEE DOOR SPECS & SCHEDULE

15

METAL PANEL CLADDING

16

PROJECT BUILDING SIGNAGE

17

PARKING GARAGE SIGNAGE

18

OVERHEAD INSULATED GARAGE DOOR SEE SCHEDULE & SPEC

19

PREF-FINISH ALUM. STOREFRONT SYSTEM W/ INSULATED GLAZING

20

CAST STONE SILL

21

FIRE PROTECTION STROBE/HORN

22

OVERFLOW ROOF DRAIN DISCHARGE

23

STEEL BOLLARD - PAINT

24

CAST STONE CAP

25

OVERFLOW NOZZLE, PLUMBING DWG'S

26

LIGHT FIXTURE - SEE ELEC DWG'S

27

PRE-FINISH ALUMINUM FLASHING

28

SIAMESE CONNECTION W/ ALARM & STROBE

29

PRECAST PANEL TO MATCH METAL CLADDING IN COLOR, AND JOINT LINE SIZE, SHAPE AND LOCATION.

Elevation Data Table: Elevations

Description	Value	Unit
a) Building Height in feet (typical)	79.00	feet
b) Total Building Square Footage (typical)	304,408.00	Square Feet
c) First Floor Building Square Footage (typical)	71,890.00	Square Feet
d) Number of building stories (typical)	7.00	Square Feet
e) Exterior Material Lst (including colors) for all		
High-density fiber cement - dark gray, High-density fiber cement - light gray, High-density fiber cement - textured gray, Phenolic or ACM Panel - wood look, Brick - cream, Brick - smoke gray, Metal Panel - dark gray, Pre-Cast Conc. - 8x16 masonry - charcoal color, Pre-Cast Conc. - 8x16 masonry - cream color		

MATERIAL LIST	RowHouses			Apartments / Retail			(SF) TOTALS:	(%) TOTAL:
	East:	North:	South:	North:	South:	West:	East:	
HIGH-DENSITY FIBER CEMENT - DARK	1,044	95	197			1,335	4,382	7,053
HIGH-DENSITY FIBER CEMENT - LIGHT	845			1,966	2,392			5,203
HIGH-DENSITY FIBER CEMENT - TEXTURED				1,780	2,498	3,763		8,041
WOOD LOOK - PHENOLIC OR ACM	573	127		1,591	2,193	97	1,216	5,797
BRICK - CREAM				1,276	3,746	7,092		12,114
BRICK- SMOKE GREY	1,878	431	493			1,765		4,567
PRE-CAST CONC. - BRICK LOOK				1,511	1,176	676	647	4,010
METAL PANEL - DARK GRAY				632	1,255	1,208		3,095
PRE-CAST CONC. - TO MATCH METAL PANEL				147	125	45		317
GLAZING	1,739	77	72	2,906	4,486	8,741	1,714	19,735
TOTAL (SF)	6,079	730	762	11,809	19,636	22,957	7,959	69,932

MATERIAL TYPE

MASONRY (INCLUDING BRICK LOOK PRE-CAST)	23.9%
PRE-CAST (BRICK-LOOK)	5.7%
PRECAST (MTL PANEL LOOK)	0.5%
METAL PANEL	4.4%
PHENOLIC OR ACM PANEL (WOOD-LOOK)	8.3%
HIGH-DENSITY FIBER CEMENT PANEL	29.0%
GLAZING	28.2%
	100.0%

NOTES:

1. ALL ROOF DRAIN TO RUN INTERNALLY, NO EXTERIOR DOWNSPOUTS.
2. ALL SIGNAGE TO MEET THE AURORA SIGN ORDINANCE.



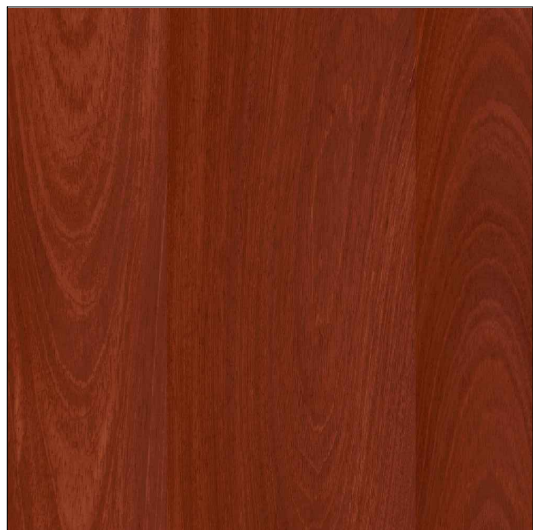
1 PARTIAL SOUTH EXTERIOR ELEVATION
SCALE: 1/16" = 1'-0"



1 - HIGH-DENSITY FIBER CEMENT



2 - HIGH-DENSITY FIBER CEMENT



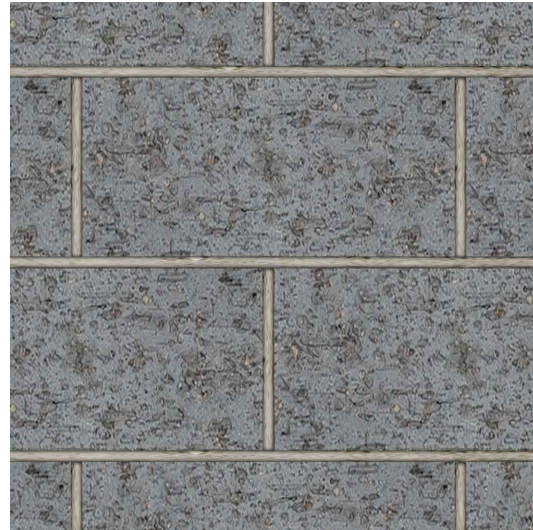
3 - PANEL: WOOD LOOK



4 - HIGH-DENSITY FIBER CEMENT



5 - BRICK: CREAM COLOR



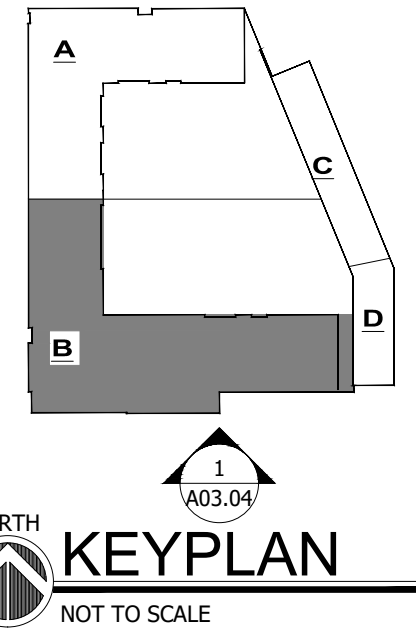
8a - PRE-CAST CONC.: BLOCK PATTERN



8b - PRE-CAST CONC.: BLOCK PATTERN



15 - PANEL: DUSTY CHARCOAL



WARNING!!!
These documents (plans & specifications) are valid for permits only when the architects original seal and signature appears and is affixed; and unless otherwise provided in writing, are intended as a permit submittal for one (1) building only.
Robert Juris and Associates Architects, Ltd.

NOTE: BUILDING DEPARTMENT
These documents (plans & specifications) are valid for permits only when the architects original seal and signature appears and is affixed; and unless otherwise provided in writing, are intended as a permit submittal for one (1) building only.
© 2023 Robert Juris and Associates Architects, Ltd.

XX/XX/2023

DATE



EXPIRES 11-30-2024

SIGNATURE

NOT FOR CONSTRUCTION

- PLANING AND ZONING REVIEW	04/25/2023
- PLANING AND ZONING REVIEW	04/21/2023
- PLANING AND ZONING REVIEW	03/23/2023
No. ISSUES & REVISIONS	DATE

CLIENT

PACIFICA RIVERVIEW DEVELOPMENT

PROJECT

NEW CONSTRUCTION

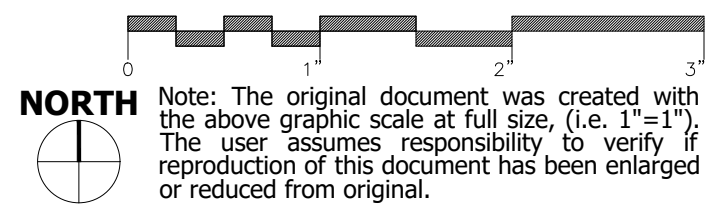
ADDRESS

NORTH RIVER STREET AURORA, IL

EXTERIOR ELEVATIONS

© 2023 Robert Juris & Associates Architects, Ltd.
These plans are protected under the copyright laws of the United States and foreign countries, and are to be used only for the construction and repair and remodeling of the structure or structures defined in the contract between the Architect and the Owner. Any use of these plans to construct, remodel or repair additional structures constitutes a violation of the Architect's copyright of these plans and is prohibited.

GRAPHIC SCALE:



Project No.: 22068

Drawn By: NS

Checked By: JRM

SHEET NUMBER

A-12

ELEVATIONS

ELEVATION LEGEND

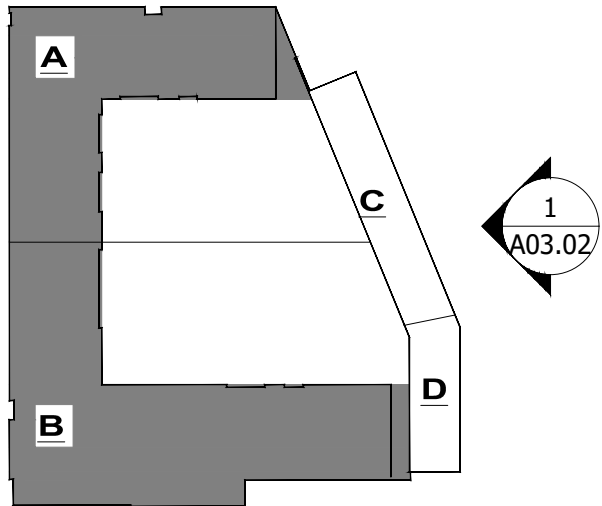
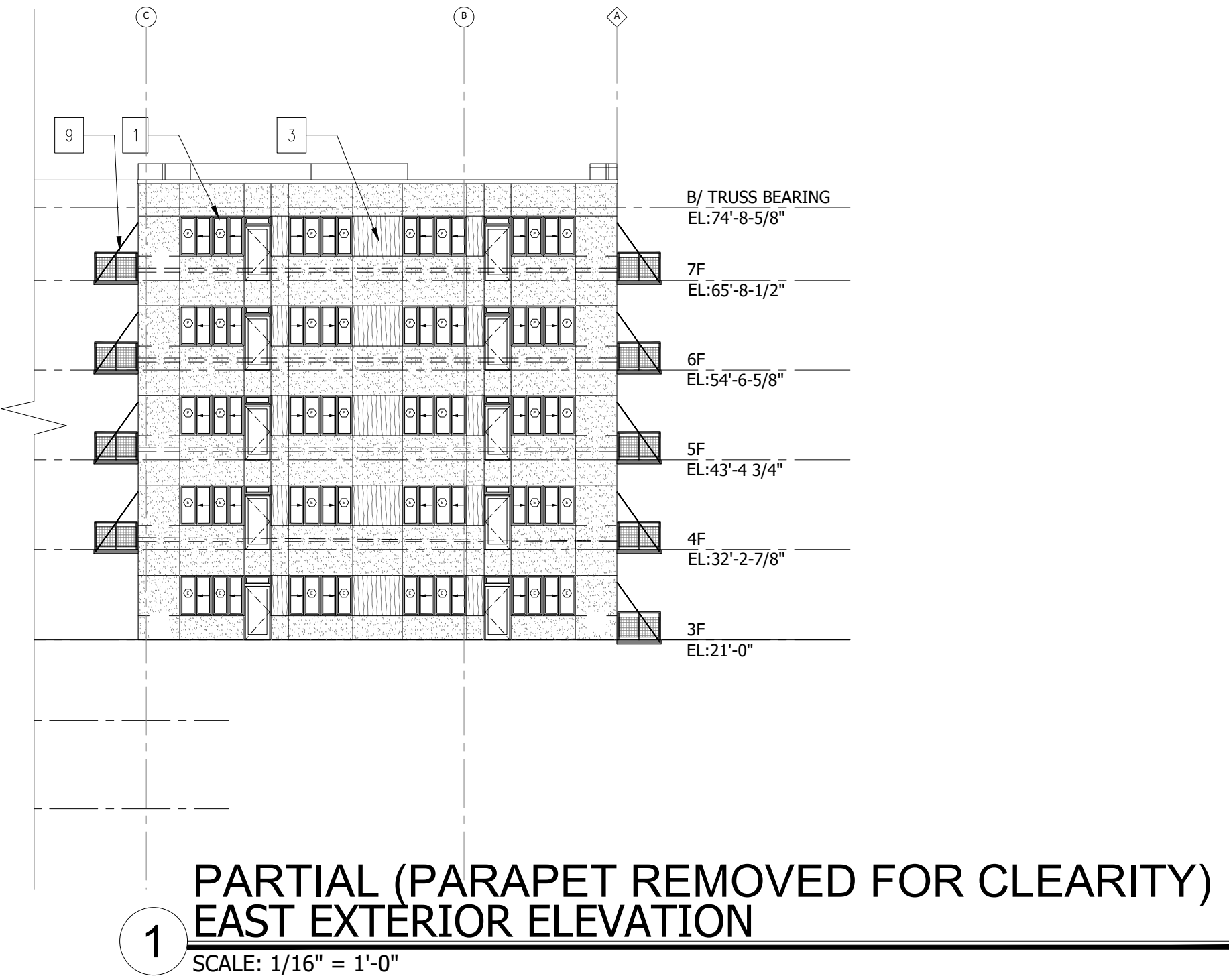
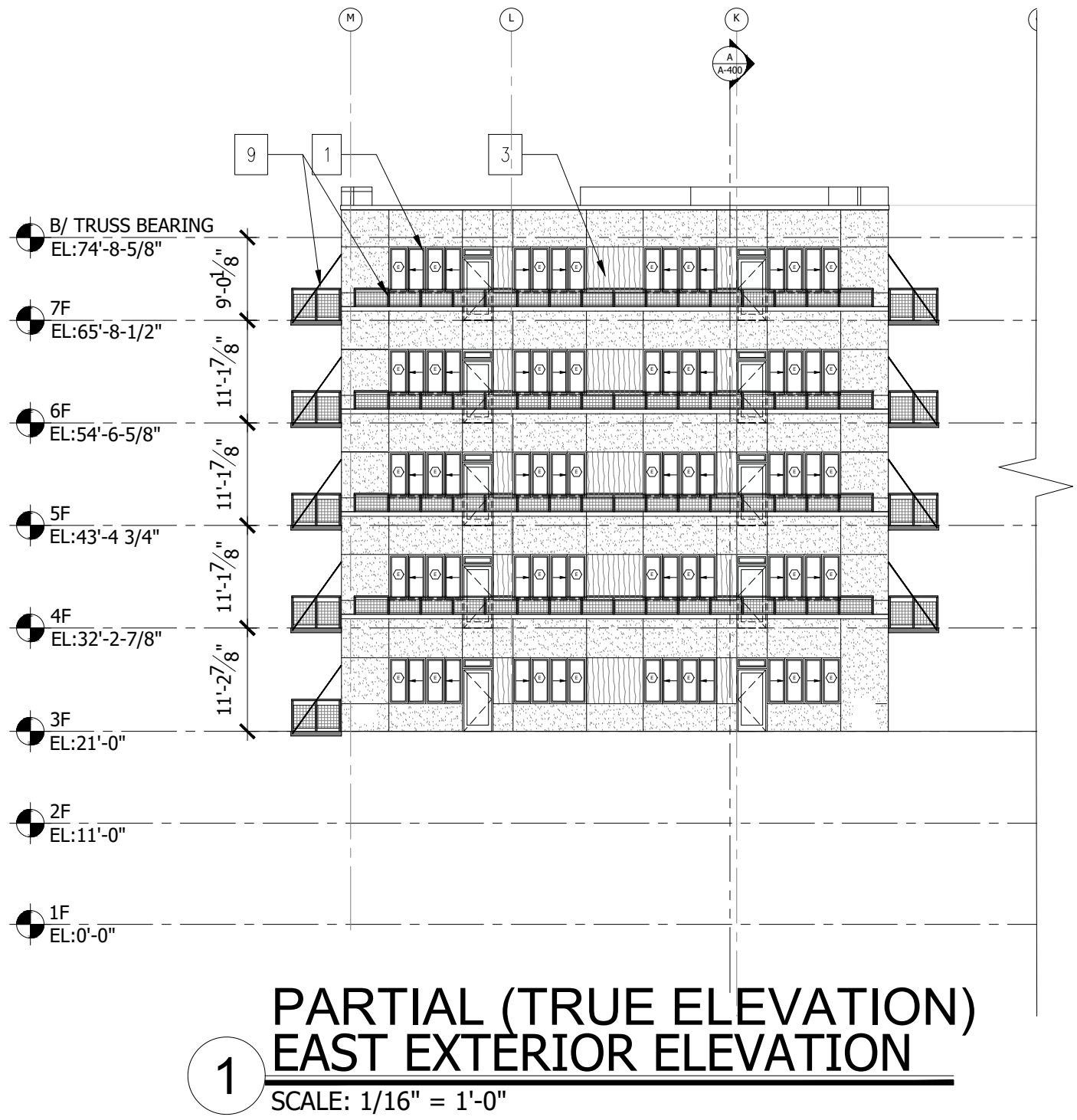
GENERAL ELEVATION NOTES: 1. PROVIDE SEALANT AROUND ALL EXTERIOR OUTLETS, HOSE BIBS, LIGHT FIXTURE MOUNTING PLATES. 2. SEE STRUCTURAL DRAWINGS FOR LIMITS OF FOUNDATIONS AND RECESSED SLABS. 3. ALL NEW EXTERIOR ALUMINUM STOREFRONT AND DOORS TO HAVE TINTED LOW-E INSULATED GLASS (TYPICAL UNO)-SEE GLAZING SPEC'S. 4. PAINT ALL EXPOSED STEEL LINTELS. 5. C.J. = CONTROL JOINT 6. SEE DETAILS SHEET A06.21 - A06.23 FOR TYPICAL BUILDING DETAILS. 7. FC-1 = FIBER CEMENT PANELIZED SYSTEM FC-2 = FIBER CEMENT PANELIZED SYSTEM WP = WOOD PANELING SYSTEM FB-1 =FULL DEPTH FACE BRICK MP = METAL PANEL SYSTEM 8. SEE SHEET A03.10 & A03.20 FOR WINDOW SCHEDULE.			
1	DARK GRAY FIBER CEMENT PANEL	10	LIGHT GRAY STONE BAND
2	LIGHT GRAY FIBER CEMENT PANEL	11	WALNUT ENTRY DOOR
3	WOOD-LOOK METAL PANEL	12	LIGHT GRAY CONCRETE STEPS
4	LINEAR TEXTURE FIBER CEMENT PANEL	13	PRE-FINISHED HVAC INTAKE LOUVER - SEE MECH. DWG'S - DARK GRAY LOUVER
5	FACE BRICK - CREAM COLOR	14	HOLLOW METAL DOOR & THERMALLY BROKEN FRAME - SEE DOOR SPEC'S & SCHEDULE
6	FACE BRICK - SMOKEY GRAY	15	METAL PANEL CLADDING
7	LIGHT GRAY CONCRETE	16	PROJECT BUILDING SIGNAGE
8a	PRECAST CONCRETE, 8x16 PATTERN, CHARCOAL	17	PARKING GARAGE SIGNAGE
8b	PRECAST CONCRETE, 8x16 PATTERN, CREAM	18	OVERHEAD INSULATED GARAGE DOOR SEE SCHEDULE & SPEC'
8c	PRECAST PANEL WITH LINIER FORM LINER, CHARCOAL	19	PREF-FINISH ALUM. STOREFRONT SYSTEM W/ INSULATED GLAZING
8d	METAL SCREEN WITH DECORATIVE PATTERN		
9	42" HIGH GUARDRAIL SYSTEM	20	CAST STONE SILL
		21	FIRE PROTECTION STROBE/HORN
		22	OVERFLOW ROOF DRAIN DISCHARGE
		23	STEEL BOLLARD - PAINT
		24	CAST STONE CAP
		25	OVERFLOW NOZZLE, PLUMBING DWG'S
		26	LIGHT FIXTURE - SEE ELEC DWG'S
		27	PRE-FINISH ALUMINUM FLASHING
		28	SIAMESE CONNECTION W/ ALARM & STROBE
		29	PRECAST PANEL TO MATCH METAL CLADDING IN COLOR, AND JOINT LINE SIZE, SHAPE AND LOCATION.

Elevation Data Table: Elevations		
Description	Value	Unit
a) Building Height in feet (typical)	79.00	feet
b) Total Building Square Footage (typical)	304,408.00	Square Feet
c) First Floor Building Square Footage (typical)	71,890.00	Square Feet
d) Number of building stories (typical)	7.00	Square Feet
e) Exterior Material List (including colors) for all		
High-density fiber cement - dark gray, High-density fiber cement - light gray, High-density fiber cement - textured gray, Phenolic or ACM Panel - wood look, Brick - cream, Brick - smoke gray, Metal Panel - dark gray, Pre-Cast Conc. - 8x16 masonry - charcoal color, Pre-Cast Conc. - 8x16 masonry - cream color		

MATERIAL LIST	RowHouses			Apartments / Retail			(SF) TOTALS:	(%) TOTAL:
	East:	North:	South:	North:	South:	West:	East:	
HIGH-DENSITY FIBER CEMENT - DARK	1,044	95	197			1,335	4,382	7,053
HIGH-DENSITY FIBER CEMENT - LIGHT	845			1,966	2,392			5,203
HIGH-DENSITY FIBER CEMENT - TEXTURED				1,780	2,498	3,763		8,041
WOOD LOOK - PHENOLIC OR ACM	573	127		1,591	2,193	97	1,216	5,797
BRICK - CREAM				1,276	3,746	7,092		12,114
BRICK- SMOKE GREY	1,878	431	493			1,765		4,567
PRE-CAST CONC. - BRICK LOOK				1,511	1,176	676	647	4,010
METAL PANEL - DARK GRAY				632	1,255	1,208		3,095
PRE-CAST CONC. - TO MATCH METAL PANEL				147	125	45		317
GLAZING	1,739	77	72	2,906	4,486	8,741	1,714	19,735
TOTAL (SF)	6,079	730	762	11,809	19,636	22,957	7,959	69,932

MATERIAL TYPE	
MASONRY (INCLUDING BRICK LOOK PRE-CAST)	23.9%
PRE-CAST (BRICK-LOOK)	5.7%
PRECAST (MTL PANEL LOOK)	0.5%
METAL PANEL	4.4%
PHENOLIC OR ACM PANEL (WOOD-LOOK)	8.3%
HIGH-DENSITY FIBER CEMENT PANEL	29.0%
GLAZING	28.2%
	100.0%

NOTES:
1. ALL ROOF DRAIN TO RUN INTERNALLY, NO EXTERIOR DOWNSPOUTS.
2. ALL SIGNAGE TO MEET THE AURORA SIGN ORDINANCE.



WARNING!!!
Unauthorized use or copying of these Plans, Drawings and/or the Designs they depict infringes rights under the Copyright Act. Copyright infringers face penalties of up to \$20,000 per work infringed and up to \$100,000 per work infringed willfully.
© 2023 Robert Juris and Associates Architects, Ltd.

NOTE: BUILDING DEPARTMENT
These documents (plans & specifications) are valid for permits only when the architects original seal and signature appears and is affixed; and unless otherwise provided in writing, are intended as a permit submittal for one (1) building only.
© 2023 Robert Juris and Associates Architects, Ltd.

XX/XX/2023
DATE
JONATHAN R. MURAWSKI
001.022816
STATE OF ILLINOIS
EXPIRES 11-30-2024
SIGNATURE

NOT FOR CONSTRUCTION

- PLANING AND ZONING REVIEW	04/25/2023
- PLANING AND ZONING REVIEW	04/21/2023
- PLANING AND ZONING REVIEW	03/23/2023
No. ISSUES & REVISIONS	DATE

CLIENT
PACIFICA RIVERVIEW DEVELOPMENT
PROJECT
NEW CONSTRUCTION
ADDRESS
NORTH RIVER STREET AURORA, IL

EXTERIOR ELEVATIONS

© 2023 Robert Juris & Associates Architects, Ltd.
These plans are protected under the copyright laws of the United States and foreign countries, and are to be used only for the construction and repair and remodeling of the structure or structures defined in the contract between the Architect and the Owner. Any use of these plans to construct, remodel or repair additional structures constitutes a violation of the Architect's copyright of these plans and is prohibited.

GRAPHIC SCALE:
0 1 2 3
Note: The original document was created with the above graphic scale at full size, (i.e. 1"=1'-0"). The user assumes responsibility to verify if reproduction of this document has been enlarged or reduced from original.

Project No.: 22068
Drawn By: NS
Checked By: JRM
SHEET NUMBER
A-13

ELEVATIONS

ELEVATION LEGEND

GENERAL ELEVATION NOTES:

1. PROVIDE SEALANT AROUND ALL EXTERIOR OUTLETS, HOSE BIBS, LIGHT FIXTURE MOUNTING PLATES.
2. SEE STRUCTURAL DRAWINGS FOR LIMITS OF FOUNDATIONS AND RECESSED SLABS.
3. ALL NEW EXTERIOR ALUMINUM STOREFRONT AND DOORS TO HAVE TINTED LOW-E INSULATED GLASS (TYPICAL UNO)- SEE GLAZING SPEC'S.
4. PAINT ALL EXPOSED STEEL LINTELS.
5. C.J. = CONTROL JOINT
6. SEE DETAILS SHEET A06.21 - A06.23 FOR TYPICAL BUILDING DETAILS.
7. FC-1 = FIBER CEMENT PANELIZED SYSTEM
FC-2 = FIBER CEMENT PANELIZED SYSTEM
WP = WOOD PANELING SYSTEM
FB-1 = FULL DEPTH FACE BRICK
MP = METAL PANEL SYSTEM
8. SEE SHEET A03.10 & A03.20 FOR WINDOW SCHEDULE.

- 1 DARK GRAY FIBER CEMENT PANEL
- 2 LIGHT GRAY FIBER CEMENT PANEL
- 3 WOOD-LOOK METAL PANEL
- 4 LINEAR TEXTURE FIBER CEMENT PANEL
- 5 FACE BRICK - CREAM COLOR
- 6 FACE BRICK - SMOKEY GRAY
- 7 LIGHT GRAY CONCRETE
- 8a PRECAST CONCRETE, 8x16 PATTERN, CHARCOAL
- 8b PRECAST CONCRETE, 8x16 PATTERN, CREAM
- 8c PRECAST PANEL WITH LINIER FORM LINER, CHARCOAL
- 8d METAL SCREEN WITH DECORATIVE PATTERN
- 9 42" HIGH GUARDRAIL SYSTEM

- 10 LIGHT GRAY STONE BAND
- 11 WALNUT ENTRY DOOR
- 12 LIGHT GRAY CONCRETE STEPS
- 13 PRE-FINISHED HVAC INTAKE LOUVER - SEE MECH. DWG'S - DARK GRAY LOUVER
- 14 HOLLOW METAL DOOR & THERMALLY BROKEN FRAME - SEE DOOR SPEC'S & SCHEDULE
- 15 METAL PANEL CLADDING
- 16 PROJECT BUILDING SIGNAGE
- 17 PARKING GARAGE SIGNAGE
- 18 OVERHEAD INSULATED GARAGE DOOR SEE SCHEDULE & SPEC
- 19 PREF-FINISH ALUM. STOREFRONT SYSTEM W/ INSULATED GLAZING

- 20 CAST STONE SILL
- 21 FIRE PROTECTION STROBE/HORN
- 22 OVERFLOW ROOF DRAIN DISCHARGE
- 23 STEEL BOLLARD - PAINT
- 24 CAST STONE CAP
- 25 OVERFLOW NOZZLE, PLUMBING DWG'S
- 26 LIGHT FIXTURE - SEE ELEC DWG'S
- 27 PRE-FINISH ALUMINUM FLASHING
- 28 SIAMESE CONNECTION W/ ALARM & STROBE
- 29 PRECAST PANEL TO MATCH METAL CLADDING IN COLOR, AND JOINT LINE SIZE, SHAPE AND LOCATION.

Elevation Data Table: Elevations

Description	Value	Unit
a) Building Height in feet (typical)	79.00	feet
b) Total Building Square Footage (typical)	304,408.00	Square Feet
c) First Floor Building Square Footage (typical)	71,890.00	Square Feet
d) Number of building stories (typical)	7.00	Square Feet
e) Exterior Material Lst (including colors) for all		
High-density fiber cement - dark gray, High-density fiber cement - light gray, High-density fiber cement - textured gray, Phenolic or ACM Panel - wood look, Brick - cream, Brick - smoke gray, Metal Panel - dark gray, Pre-Cast Conc. - 8x16 masonry - charcoal color, Pre-Cast Conc. - 8x16 masonry - cream color		

MATERIAL LIST	RowHouses			Apartments / Retail			(SF) TOTALS:	(%) TOTAL:
	East:	North:	South:	North:	South:	West:		
HIGH-DENSITY FIBER CEMENT - DARK	1,044	95	197			1,335	4,382	7,053
HIGH-DENSITY FIBER CEMENT - LIGHT	845			1,966	2,392			5,203
HIGH-DENSITY FIBER CEMENT - TEXTURED				1,780	2,498	3,763		8,041
WOOD LOOK - PHENOLIC OR ACM	573	127		1,591	2,193	97	1,216	5,797
BRICK - CREAM				1,276	3,746	7,092		12,114
BRICK - SMOKE GREY	1,878	431	493			1,765		4,567
PRE-CAST CONC. - BRICK LOOK				1,511	1,176	676	647	4,010
METAL PANEL - DARK GRAY				632	1,255	1,208		3,095
PRE-CAST CONC. - TO MATCH METAL PANEL				147	125	45		317
GLAZING	1,739	77	72	2,906	4,486	8,741	1,714	19,735
TOTAL (SF)	6,079	730	762	11,809	19,636	22,957	7,959	69,932

MATERIAL TYPE

MASONRY (INCLUDING BRICK LOOK PRE-CAST)	23.9%
PRE-CAST (BRICK-LOOK)	5.7%
PRECAST (MTL PANEL LOOK)	0.5%
METAL PANEL	4.4%
PHENOLIC OR ACM PANEL (WOOD-LOOK)	8.3%
HIGH-DENSITY FIBER CEMENT PANEL	29.0%
GLAZING	28.2%
	100.0%

NOTES:

1. ALL ROOF DRAIN TO RUN INTERNALLY, NO EXTERIOR DOWNSPOUTS.
2. ALL SIGNAGE TO MEET THE AURORA SIGN ORDINANCE.



PARTIAL COURTYARD EAST - EXTERIOR ELEVATION

SCALE: 1/16" = 1'-0"



PARTIAL COURTYARD SOUTH - EXTERIOR ELEVATION

SCALE: 1/16" = 1'-0"



PARTIAL COURTYARD NORTH - EXTERIOR ELEVATION

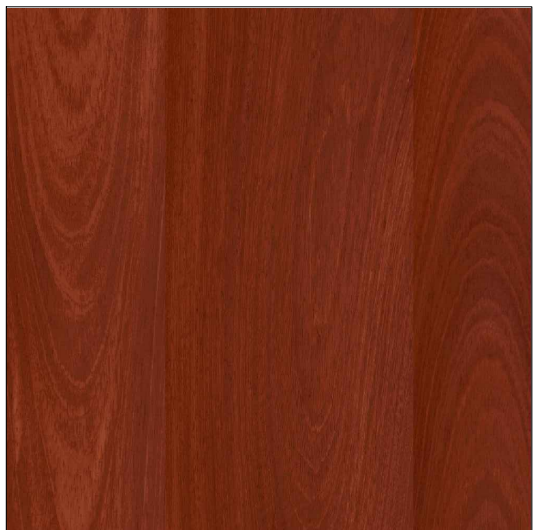
SCALE: 1/16" = 1'-0"



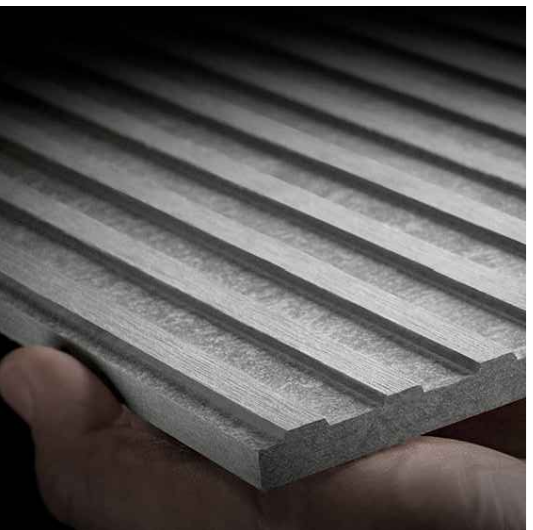
1 - HIGH-DENSITY FIBER CEMENT



2 - HIGH-DENSITY FIBER CEMENT



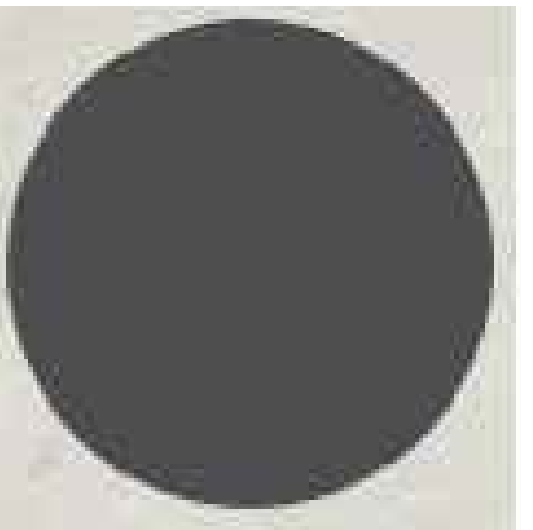
3 - PANEL: WOOD LOOK



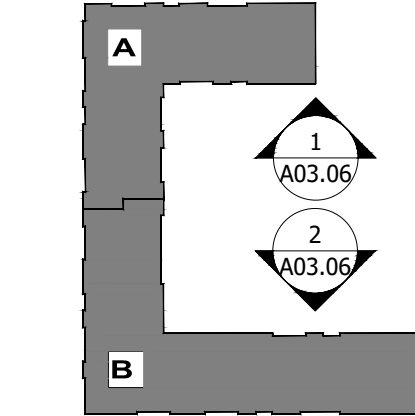
4 - HIGH-DENSITY FIBER CEMENT



5 - BRICK: CREAM COLOR



15 - PANEL: DUSTY CHARCOAL II



KEYPLAN

NOT TO SCALE

WARNING!!!	
Unauthorized use or copying of these Plans, Drawings and/or the Designs they depict infringes rights under the Copyright Act. Copyright infringers face penalties of up to \$20,000 per work infringed and up to \$100,000 per work infringed willfully.	
© 2023 Robert Juris and Associates Architects, Ltd.	

NOTE: BUILDING DEPARTMENT	
These documents (plans & specifications) are valid for permits only when the architect's original seal and signature appears and is affixed; and unless otherwise provided in writing, are intended as a permit submittal for one (1) building only.	
© 2023 Robert Juris and Associates Architects, Ltd.	

XX/XX/2023

DATE



EXPIRES 11-30-2024

SIGNATURE

NOT FOR CONSTRUCTION

- PLANING AND ZONING REVIEW	04/25/2023
- PLANING AND ZONING REVIEW	04/21/2023
- PLANING AND ZONING REVIEW	03/23/2023

No. ISSUES & REVISIONS DATE

CLIENT

PACIFICA RIVERVIEW DEVELOPMENT

PROJECT

NEW CONSTRUCTION

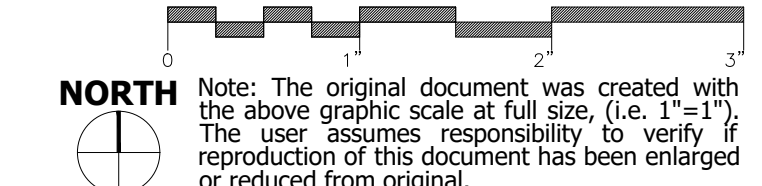
ADDRESS

NORTH RIVER STREET AURORA, IL

EXTERIOR ELEVATIONS

© 2023 Robert Juris & Associates Architects, Ltd.
These plans are protected under the copyright laws of the United States and foreign countries, and are to be used only for the construction and repair and remodeling of the structure or structures defined in the contract between the Architect and the Owner. Any use of these plans for construct, remodel or repair additional structures constitutes a violation of the Architect's copyright of these plans and is prohibited.

GRAPHIC SCALE:



Note: The original document was created with the above graphic scale at full size, (i.e. 1"=1'). The user assumes responsibility to verify if reproduction of this document has been enlarged or reduced from original.

Project No.: 22068

Drawn By: NS

Checked By: JRM

SHEET NUMBER

A-14

ELEVATIONS

ELEVATION LEGEND

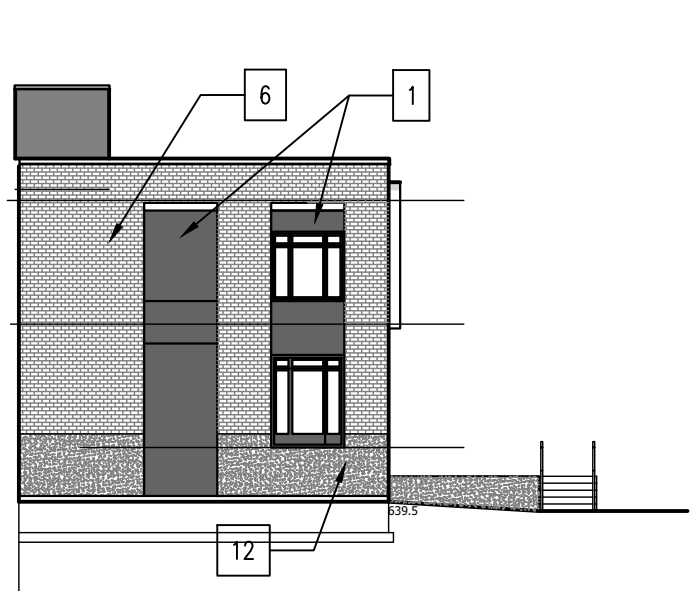
GENERAL ELEVATION NOTES: 1. PROVIDE SEALANT AROUND ALL EXTERIOR OUTLETS, HOSE BIBS, LIGHT FIXTURE MOUNTING PLATES. 2. SEE STRUCTURAL DRAWINGS FOR LIMITS OF FOUNDATIONS AND RECESSED SLABS. 3. ALL NEW EXTERIOR ALUMINUM STOREFRONT AND DOORS TO HAVE TINTED LOW-E INSULATED GLASS (TYPICAL UNO)- SEE GLAZING SPECS. 4. PAINT ALL EXPOSED STEEL LINTELS. 5. C.J. = CONTROL JOINT 6. SEE DETAILS SHEET A06.21 - A06.23 FOR TYPICAL BUILDING DETAILS. 7. FC-1 = FIBER CEMENT PANELIZED SYSTEM FC-2 = FIBER CEMENT PANELIZED SYSTEM WP = WOOD PANELING SYSTEM FB-1 = FULL DEPTH FACE BRICK MP = METAL PANEL SYSTEM 8. SEE SHEET A03.10 & A03.20 FOR WINDOW SCHEDULE.	1	DARK GRAY FIBER CEMENT PANEL	10	LIGHT GRAY STONE BAND	20	CAST STONE SILL
	2	LIGHT GRAY FIBER CEMENT PANEL	11	WALNUT ENTRY DOOR	21	FIRE PROTECTION STROBE/HORN
	3	WOOD-LOOK METAL PANEL	12	LIGHT GRAY CONCRETE STEPS	22	OVERFLOW ROOF DRAIN DISCHARGE
	4	LINEAR TEXTURE FIBER CEMENT PANEL	13	PRE-FINISHED HVAC INTAKE LOUVER - SEE MECH. DWG'S - DARK GRAY LOUVER	23	STEEL BOLLARD - PAINT
	5	FACE BRICK - CREAM COLOR	14	HOLLOW METAL DOOR & THERMALLY BROKEN FRAME - SEE DOOR SPECS & SCHEDULE	24	CAST STONE CAP
	6	FACE BRICK - SMOKEY GRAY	15	METAL PANEL CLADDING	25	OVERFLOW NOZZLE, PLUMBING DWG'S
	7	LIGHT GRAY CONCRETE	16	PROJECT BUILDING SIGNAGE	26	LIGHT FIXTURE - SEE ELEC DWG'S
	8a	PRECAST CONCRETE, 8x16 PATTERN, CHARCOAL	17	PARKING GARAGE SIGNAGE	27	PRE-FINISH ALUMINUM FLASHING
	8b	PRECAST CONCRETE, 8x16 PATTERN, CREAM	18	OVERHEAD INSULATED GARAGE DOOR SEE SCHEDULE & SPEC	28	SIAMESE CONNECTION W/ ALARM & STROBE
	8c	PRECAST PANEL WITH LINIER FORM LINER, CHARCOL	19	PREF-FINISH ALUM. STOREFRONT SYSTEM W/ INSULATED GLAZING	29	PRECAST PANEL TO MATCH METAL CLADDING IN COLOR, AND JOINT LINE SIZE, SHAPE AND LOCATION.
	8d	METAL SCREEN WITH DECORATIVE PATTERN				
	9	42" HIGH GUARDRAIL SYSTEM				

Elevation Data Table: Elevations		
Description	Value	Unit
a) Building Height in feet (typical)	79.00	feet
b) Total Building Square Footage (typical)	304,408.00	Square Feet
c) First Floor Building Square Footage (typical)	71,890.00	Square Feet
d) Number of building stories (typical)	7.00	Square Feet
e) Exterior Material List (including colors) for all		
High-density fiber cement - dark gray, High-density fiber cement - light gray, High-density fiber cement - textured gray, Phenolic or ACM Panel - wood look, Brick - cream, Brick - smoke gray, Metal Panel - dark gray, Pre-Cast Conc. - 8x16 masonry - charcoal color, Pre-Cast Conc. - 8x16 masonry - cream color		

MATERIAL LIST	RowHouses			Apartments / Retail			(SF) TOTALS:	(%) TOTAL:
	East:	North:	South:	North:	South:	West:		
HIGH-DENSITY FIBER CEMENT - DARK	1,044	95	197				7,053	10.1%
HIGH-DENSITY FIBER CEMENT - LIGHT	845			1,966	2,392	1,335	5,203	7.4%
HIGH-DENSITY FIBER CEMENT - TEXTURED				1,780	2,498	3,763	8,041	11.5%
WOOD LOOK - PHENOLIC OR ACM	573	127		1,591	2,193	97	5,797	8.3%
BRICK - CREAM				1,276	3,746	7,092	12,114	17.3%
BRICK- SMOKE GREY	1,878	431	493		1,765		4,567	6.5%
PRE-CAST CONC. - BRICK LOOK				1,511	1,176	676	4,010	5.7%
METAL PANEL - DARK GRAY				632	1,255	1,208	3,095	4.4%
PRE-CAST CONC. - TO MATCH METAL PANEL GLAZING	1,739	77	72	147	125	45	317	0.5%
				2,906	4,486	8,741	19,735	28.2%
TOTAL (SF)	6,079	730	762	11,809	19,636	22,957	69,932	100.0%

MATERIAL TYPE	
MASONRY (INCLUDING BRICK LOOK PRE-CAST)	23.9%
PRE-CAST (BRICK-LOOK)	5.7%
PRECAST (MTL PANEL LOOK)	0.5%
METAL PANEL	4.4%
PHENOLIC OR ACM PANEL (WOOD-LOOK)	8.3%
HIGH-DENSITY FIBER CEMENT PANEL	29.0%
GLAZING	28.2%
	100.0%

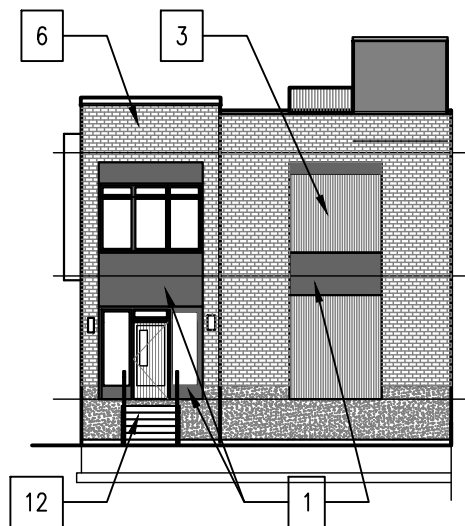
NOTES:
1. ALL ROOF DRAIN TO RUN INTERNALLY, NO EXTERIOR DOWNSPOUTS.
2. ALL SIGNAGE TO MEET THE AURORA SIGN ORDINANCE.



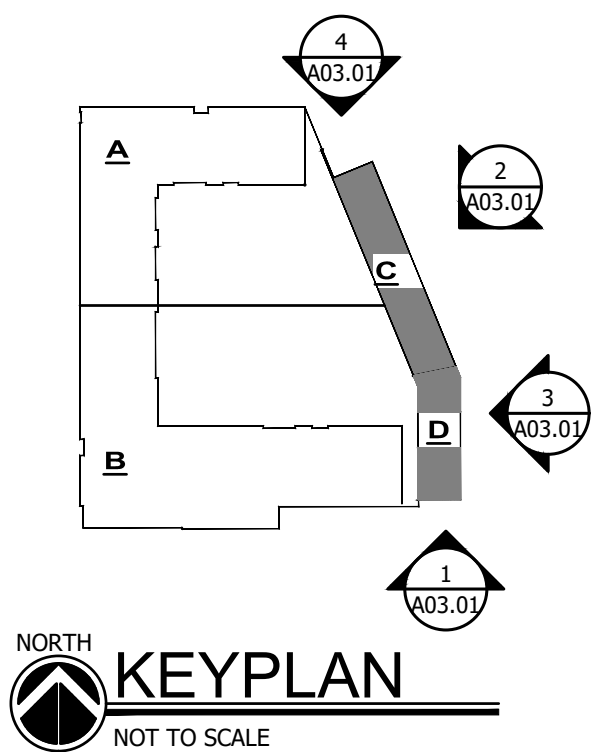
1 ROWHOUSE EXTERIOR ELEVATION
SCALE: 1/16" = 1'-0"



2/3 ROWHOUSE EXTERIOR ELEVATION
SCALE: 1/16" = 1'-0"



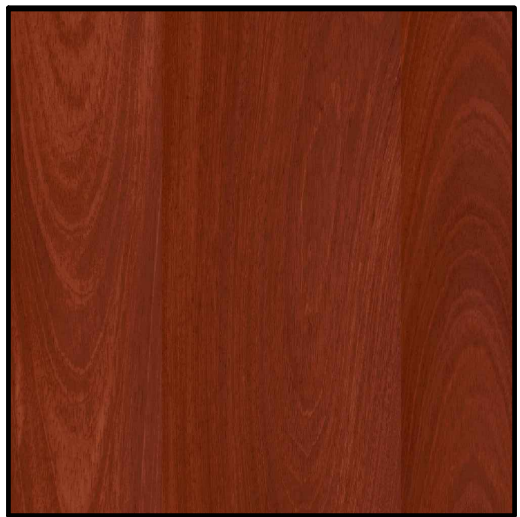
4 ROWHOUSE EXTERIOR ELEVATION
SCALE: 1/16" = 1'-0"



1 - HIGH-DENSITY FIBER CEMENT



2 - HIGH-DENSITY FIBER CEMENT



3 - PANEL: WOOD LOOK



4 - HIGH-DENSITY FIBER CEMENT



6 - BRICK: SMOKEY GRAY



9 - RETAINING WALL W/ GAURDRAIL

WARNING!!!
Unauthorized use or copying of these Plans, Drawings and/or the Designs they depict infringes rights under the Copyright Act. Copyright Infringers face penalties of up to \$20,000 per work infringed and up to \$100,000 per work infringed willfully.
© 2023 Robert Juris and Associates Architects, Ltd.

NOTE: BUILDING DEPARTMENT
These documents (plans & specifications) are valid for permits only when the architects original seal and signature appears and is affixed; and unless otherwise provided in writing, one intended as a permit submittal for one (1) building only.
© 2023 Robert Juris and Associates Architects, Ltd.

XX/XX/2023
DATE



EXPIRES 11-30-2024

SIGNATURE

GRAPHIC SCALE:
0 1 2 3
Note: The original document was created with the above graphic scale at full size. (i.e. 1"=1'). The user assumes responsibility to verify if reproduction of this document has been enlarged or reduced from original.

Project No.: 22068
Drawn By: NS
Drawn By: NBC
Checked By: JRM

SHEET NUMBER
A-15

RJA
ROBERT JURIS & ASSOCIATES
ARCHITECTS, LTD.

9500 BORMET DRIVE, SUITE #205
MOKENA, IL 60448
(815) 806-0146
www.rjaarchitects.com

JONATHAN R. MURAWSKI, AIA, NCARB
IL. LICENSE NUMBER: 001-022816

PROFESSIONAL DESIGN FIRM REGISTRATION:
STATE OF ILLINOIS CORPORATE LICENSE #184-000167

ELECTRONIC FILE WARNING
Errors may occur in transmission of electronic files. Robert Juris & Associates, Ltd. is not responsible for any claims, damages or expenses arising out of the use of the information contained in electronic files.
Electronic files may not accurately reflect the final design conditions. It is the responsibility of the user to verify all layouts, dimensions, and other related information.

DESIGN CONSULTANT:

ZSW Architects

1135 N. California Ave. Chicago, IL 60622 T: +1 312 488 9180

NOT FOR CONSTRUCTION

- PLANNING AND ZONING REVIEW 04/25/2023
- PLANNING AND ZONING REVIEW 04/21/2023
- PLANNING AND ZONING REVIEW 03/23/2023

No. ISSUES & REVISIONS DATE

CLIENT
PACIFICA RIVERVIEW DEVELOPMENT

PROJECT
NEW CONSTRUCTION

ADDRESS
**NORTH RIVER STREET
AURORA, IL**

EXTERIOR ELEVATIONS

© 2023 Robert Juris & Associates Architects, Ltd.
These plans are protected under the copyright laws of the United States and foreign countries, and are to be used only for the construction and repair and remodeling of the structure or structures defined in the contract between the Architect and the Owner. Any use of these plans to construct, remodel or repair additional structures constitutes a violation of the Architect's copyright of these plans and is prohibited.

ELEVATIONS



1 WEST ELEVATION



2 NORTH ELEVATION



ROBERT JURIS & ASSOCIATES
ARCHITECTS, LTD.

9500 BORMET DRIVE, SUITE #205
MOKENA, IL 60448
(815) 806-0146
www.rjaarchitects.com

JONATHAN R. MURAWSKI, AIA, NCARB
IL. LICENSE NUMBER: 001-022816

PROFESSIONAL DESIGN FIRM REGISTRATION:
STATE OF ILLINOIS CORPORATE LICENSE #184-000167

ELECTRONIC FILE WARNING
Errors may occur in transmission of electronic files. Robert Juris & Associates, Ltd. is not responsible for any claims, damages or expenses arising out of the use of the information contained in electronic files.

Electronic files may not accurately reflect the final design conditions. It is the responsibility of the user to verify all layouts, dimensions, and other related information.

DESIGN CONSULTANT:
ZSW Architects
1135 N. California Ave. Chicago, IL 60622 T: +1 312 488 9180

NOT FOR CONSTRUCTION

-	PLANING AND ZONING REVIEW	04/25/2023
-	PLANING AND ZONING REVIEW	04/21/2023
-	PLANING AND ZONING REVIEW	03/23/2023
No.	ISSUES & REVISIONS	DATE

CLIENT
**PACIFICA RIVERVIEW
DEVELOPMENT**
PROJECT
NEW CONSTRUCTION
ADDRESS
**NORTH RIVER STREET
AURORA, IL**

EXTERIOR ELEVATIONS

© 2023 Robert Juris & Associates Architects, Ltd.
These plans are protected under the copyright laws of the United States and foreign countries, and are to be used only for the construction and repair and remodeling of the structure or structures defined in the contract between the Architect and the Owner. Any use of these plans to construct, remodel or repair additional structures constitutes a violation of the Architect's copyright of these plans and is prohibited.

GRAPHIC SCALE:
0 1 2 3
NORTH
Note: The original document was created with the above graphic scale at full size, (i.e. 1"=1'). The user assumes responsibility to verify if reproduction of this document has been enlarged or reduced from original.

Project No.: 22068
Drawn By: NS
Drawn By: NBC
Checked By: JRM
SHEET NUMBER
A-16

WARNING!!!
Unauthorized use or copying of these Plans, Drawings and/or the Designs they depict infringes rights under the Copyright Act. Copyright infringers face penalties of up to \$20,000 per work infringed and up to \$100,000 per work infringed willfully.
© 2023 Robert Juris and Associates Architects, Ltd.

NOTE: BUILDING DEPARTMENT
These documents (plans & specifications) are valid for permits only when the architects original seal and signature appears and is affixed; and unless otherwise provided in writing, are intended as a permit submittal for one (1) building only.
© 2023 Robert Juris and Associates Architects, Ltd.

XX/XX/2023
DATE
JONATHAN R. MURAWSKI
001.022816
STATE OF ILLINOIS
EXPIRES 11-30-2024
SIGNATURE

ELEVATIONS



1 EAST ELEVATION



2 SOUTH ELEVATION



ROBERT JURIS & ASSOCIATES
ARCHITECTS, LTD.

9500 BORMET DRIVE, SUITE #205
MOKENA, IL 60448
(815) 806-0146
www.rjaarchitects.com

JONATHAN R. MURAWSKI, AIA, NCARB
IL. LICENSE NUMBER: 001-022816

PROFESSIONAL DESIGN FIRM REGISTRATION:
STATE OF ILLINOIS CORPORATE LICENSE #184-000167

ELECTRONIC FILE WARNING
Errors may occur in transmission of electronic files. Robert Juris & Associates, Ltd. is not responsible for any claims, damages or expenses arising out of the use of the information contained in electronic files.

Electronic files may not accurately reflect the final design conditions. It is the responsibility of the user to verify all layouts, dimensions, and other related information.

DESIGN CONSULTANT:
ZSW Architects
1135 N. California Ave. Chicago, IL 60622 T: +1 312 488 9180

NOT FOR CONSTRUCTION

-	PLANING AND ZONING REVIEW	04/25/2023
-	PLANING AND ZONING REVIEW	04/21/2023
-	PLANING AND ZONING REVIEW	03/23/2023
No.	ISSUES & REVISIONS	DATE

CLIENT
**PACIFICA RIVERVIEW
DEVELOPMENT**
PROJECT
NEW CONSTRUCTION
ADDRESS
**NORTH RIVER STREET
AURORA, IL**

EXTERIOR ELEVATIONS

© 2023 Robert Juris & Associates Architects, Ltd.
These plans are protected under the copyright laws of the United States and foreign countries, and are to be used only for the construction and repair and remodeling of the structure or structures defined in the contract between the Architect and the Owner. Any use of these plans to construct, remodel or repair additional structures constitutes a violation of the Architect's copyright of these plans and is prohibited.

GRAPHIC SCALE:
0 1 2 3
Note: The original document was created with the above graphic scale at full size, (i.e. 1"=1'). The user assumes responsibility to verify if reproduction of this document has been enlarged or reduced from original.

Project No.: 22068
Drawn By: NS
Drawn By: NBC
Checked By: JRM
SHEET NUMBER
A-17

WARNING!!!
Unauthorized use or copying of these Plans, Drawings and/or the Designs they depict infringes rights under the Copyright Act. Copyright infringement face penalties of up to \$20,000 per work infringed and up to \$100,000 per work infringed willfully.
© 2023 Robert Juris and Associates Architects, Ltd.

NOTE: BUILDING DEPARTMENT
These documents (plans & specifications) are valid for permits only when the architects original seal and signature appears and is affixed; and unless otherwise provided in writing, are intended as a permit submittal for one (1) building only.
© 2023 Robert Juris and Associates Architects, Ltd.

XX/XX/2023
DATE
JONATHAN R. MURAWSKI
001.022816
STATE OF ILLINOIS
EXPIRES 11-30-2024
SIGNATURE