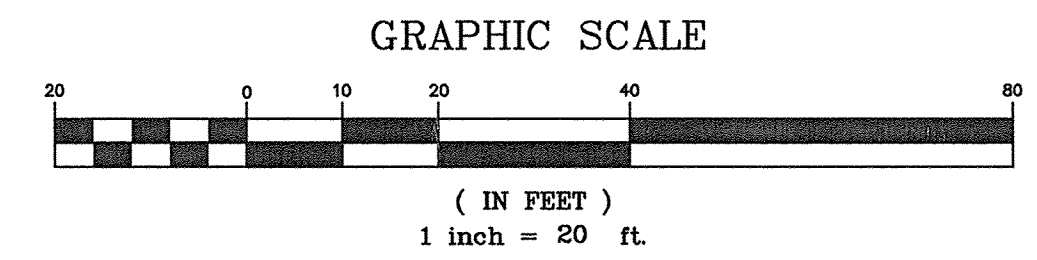
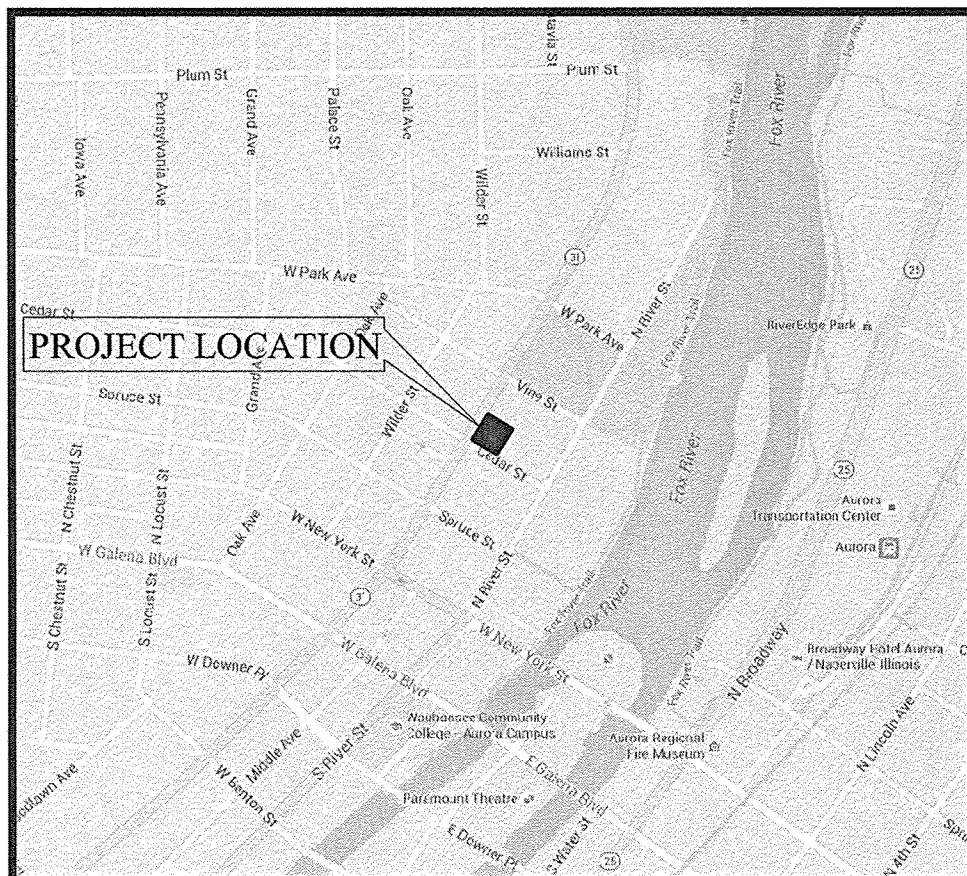


BOUNDARY AND TOPOGRAPHIC SURVEY



Know what's below.
Call before you dig.

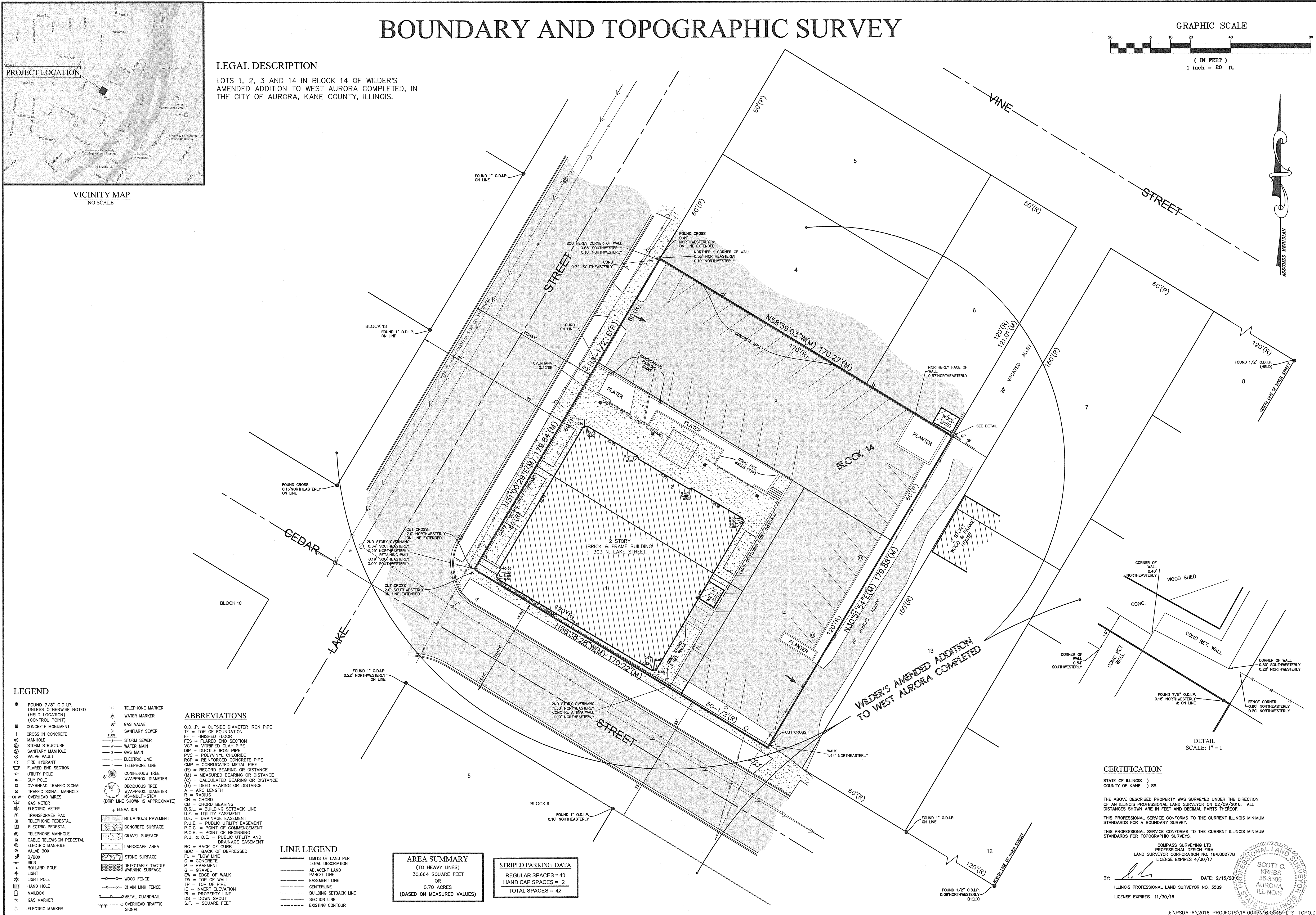
UTILITY STATEMENT
THE UNDERGROUND UTILITIES SHOWN HAVE BEEN LOCATED FROM VISUAL FIELD SURVEYING AND EXISTING DRAWINGS, MAPS AND RECORDS. THE SURVEYOR DOES NOT WARRANT THAT THE UNDERGROUND UTILITIES SHOWN COMPRISE ALL UTILITIES THAT MAY BE PRESENT. THE SURVEYOR DOES NOT WARRANT THAT THE SURVEYOR HAS LOCATED ALL UTILITIES AS INDICATED, ALTHOUGH THEY ARE LOCATED AS ACCURATELY AS POSSIBLE. THE SURVEYOR HAS NOT CONDUCTED A PHYSICAL SURVEY OF THE UTILITIES SHOWN. THE SURVEYOR HAS NOT PHYSICALLY LOCATED THE UNDERGROUND LINES.



VICINITY MAP
NO SCALE

LEGAL DESCRIPTION

LOTS 1, 2, 3 AND 14 IN BLOCK 14 OF WILDER'S AMENDED ADDITION TO WEST AURORA COMPLETED, IN THE CITY OF AURORA, KANE COUNTY, ILLINOIS.



- LEGEND**
- FOUND 7/8" O.D.I.P. (HELD LOCATION) (CONTROL POINT)
 - CONCRETE MONUMENT
 - ⊕ CROSS IN CONCRETE
 - ⊙ STORM STRUCTURE
 - ⊙ SANITARY MANHOLE
 - ⊙ VALVE VAULT
 - ⊙ FIRE HYDRANT
 - ⊙ FLARED END SECTION
 - ⊙ UTILITY POLE
 - ⊙ GUY POLE
 - ⊙ OVERHEAD TRAFFIC SIGNAL
 - ⊙ TRAFFIC SIGNAL MANHOLE
 - ⊙ OVERHEAD WIRES
 - ⊙ GAS METER
 - ⊙ ELECTRIC METER
 - ⊙ TRANSFORMER PAD
 - ⊙ TELEPHONE PEDESTAL
 - ⊙ ELECTRIC PEDESTAL
 - ⊙ TELEPHONE MANHOLE
 - ⊙ CABLE TELEVISION PEDESTAL
 - ⊙ ELECTRIC MANHOLE
 - ⊙ VALVE BOX
 - ⊙ B/BOX
 - ⊙ SIGN
 - ⊙ BOLLARD POLE
 - ⊙ LIGHT
 - ⊙ LIGHT POLE
 - ⊙ HAND HOLE
 - ⊙ MAILBOX
 - ⊙ GAS MARKER
 - ⊙ ELECTRIC MARKER
 - ⊕ TELEPHONE MARKER
 - ⊕ WATER MARKER
 - ⊕ GAS VALVE
 - ⊕ SANITARY SEWER
 - ⊕ STORM SEWER
 - ⊕ WATER MAIN
 - ⊕ GAS MAIN
 - ⊕ ELECTRIC LINE
 - ⊕ TELEPHONE LINE
 - ⊕ CONIFEROUS TREE
 - ⊕ DEODOROUS TREE
 - ⊕ DECIDUOUS TREE
 - ⊕ W/APPROX. DIAMETER
 - ⊕ W/APPROX. DIAMETER
 - ⊕ MS=MULTI-STEM
 - ⊕ (DRIP LINE SHOWN IS APPROXIMATE)
 - ⊕ ELEVATION
 - ▨ BITUMINOUS PAVEMENT
 - ▨ CONCRETE SURFACE
 - ▨ GRAVEL SURFACE
 - ▨ LANDSCAPE AREA
 - ▨ STONE SURFACE
 - ▨ DETECTABLE TACTILE WARNING SURFACE
 - CHAIN LINK FENCE
 - METAL GUARDRAIL
 - OVERHEAD TRAFFIC SIGNAL

- ABBREVIATIONS**
- O.D.I.P. = OUTSIDE DIAMETER IRON PIPE
 - TF = TOP OF FOUNDATION
 - FF = FINISHED FLOOR
 - FES = FLARED END SECTION
 - VCP = VITRIFIED CLAY PIPE
 - DIP = DUCTILE IRON PIPE
 - PVC = POLYVINYL CHLORIDE
 - RCP = REINFORCED CONCRETE PIPE
 - CMP = CORRUGATED METAL PIPE
 - CB = CHORD BEARING OR DISTANCE
 - (R) = RECORD BEARING OR DISTANCE
 - (C) = CALCULATED BEARING OR DISTANCE
 - (D) = DEED BEARING OR DISTANCE
 - A = ARC LENGTH
 - R = RADIUS
 - CH = CHORD
 - CB = CHORD BEARING
 - B.S.L. = BUILDING SETBACK LINE
 - U.E. = UTILITY EASEMENT
 - D.E. = DRAINAGE EASEMENT
 - P.U.E. = PUBLIC UTILITY EASEMENT
 - P.O.C. = POINT OF COMMENCEMENT
 - P.O.B. = POINT OF BEGINNING
 - P.U. & D.E. = PUBLIC UTILITY AND DRAINAGE EASEMENT
 - BC = BACK OF CURB
 - BDC = BACK OF DEPRESSED
 - FL = FLOW LINE
 - C = CONCRETE
 - P = PAVEMENT
 - G = GRAVEL
 - EW = EDGE OF WALK
 - TW = TOP OF WALL
 - TP = TOP OF PIPE
 - IE = INVERT ELEVATION
 - PL = PROPERTY LINE
 - SECTION LINE
 - DS = DOWN SPOUT
 - S.F. = SQUARE FEET

- LINE LEGEND**
- LIMITS OF LAND PER LEGAL DESCRIPTION
 - ADJACENT LAND PARCEL LINE
 - EASEMENT LINE
 - CENTERLINE
 - BUILDING SETBACK LINE
 - SECTION LINE
 - EXISTING CONTOUR

AREA SUMMARY
(TO HEAVY LINES)
30,864 SQUARE FEET
OR
0.70 ACRES
(BASED ON MEASURED VALUES)

STRIPED PARKING DATA

REGULAR SPACES = 40
HANDICAP SPACES = 2
TOTAL SPACES = 42

CERTIFICATION

STATE OF ILLINOIS)
COUNTY OF KANE) SS

THE ABOVE DESCRIBED PROPERTY WAS SURVEYED UNDER THE DIRECTION OF AN ILLINOIS PROFESSIONAL LAND SURVEYOR ON 02/09/2016. ALL DISTANCES SHOWN ARE IN FEET AND DECIMAL PARTS THEREOF.

THIS PROFESSIONAL SERVICE CONFORMS TO THE CURRENT ILLINOIS MINIMUM STANDARDS FOR A BOUNDARY SURVEY.

THIS PROFESSIONAL SERVICE CONFORMS TO THE CURRENT ILLINOIS MINIMUM STANDARDS FOR TOPOGRAPHIC SURVEYS.

COMPASS SURVEYING LTD
PROFESSIONAL DESIGN FIRM
LAND SURVEYOR CORPORATION NO. 184.002778
LICENSE EXPIRES 4/30/17

BY: *[Signature]* DATE: 2/15/2016

ILLINOIS PROFESSIONAL LAND SURVEYOR NO. 3509
LICENSE EXPIRES 11/30/16

SCOTT C. KREBS
35-3509
AURORA, ILLINOIS

NO.	DATE	REVISIONS	DRAWN BY	CHECKED BY	BOOK	PG
					455	66-68

PROJECT	303 NORTH LAKE STREET AURORA, ILLINOIS
CLIENT	ESM CIVIL SOLUTIONS, LLC NAPERVILLE, ILLINOIS 60563

COMPASS SURVEYING LTD
SURVEYING • TOPOGRAPHY • CONSTRUCTION STAKING

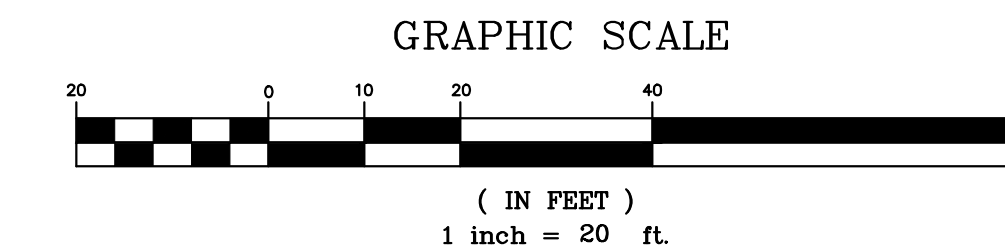
2631 GINGER WOODS PARKWAY, STE. 100
AURORA, IL 60502
PHONE: (630) 820-9100 FAX: (630) 820-7030 EMAIL: ADMIN@COMPASSSURVEYING.COM

SCALE: 1" = 20'

1 OF 2

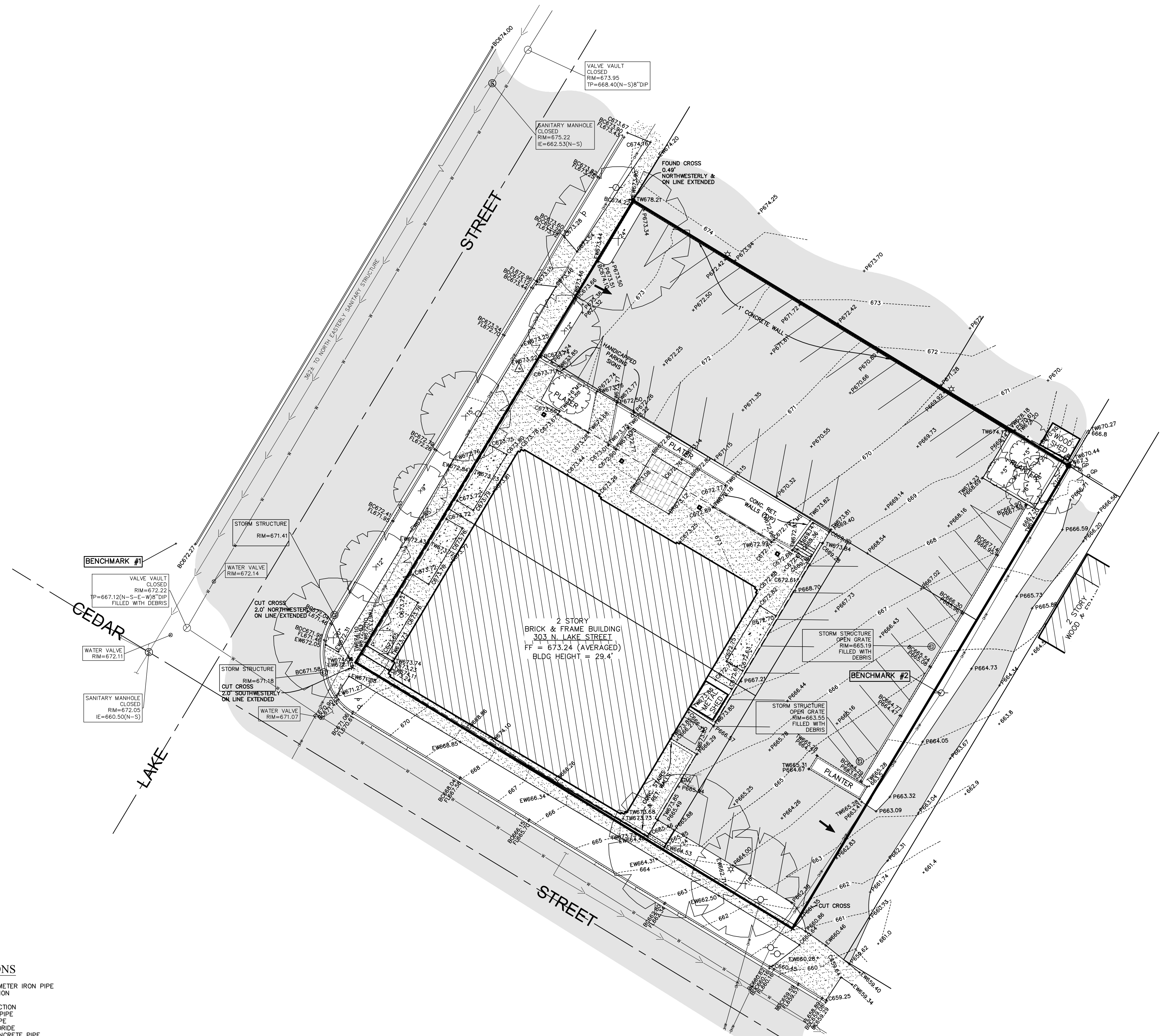
PROJ. NO.: 16.0045

BOUNDARY AND TOPOGRAPHIC SURVEY



811
Know what's below.
Call before you dig.

UTILITY STATEMENT
THE UNDEVELOPED UTILITIES SHOWN HAVE BEEN LOCATED FROM RECORDS SUPPLIED TO SURVEYOR. THE SURVEYOR MAKES NO WARRANTY AS TO THE ACCURACY OF THE RECORDS. ALL UTILITIES SHOWN ARE THE PROPERTY OF THE UTILITY COMPANY. THE SURVEYOR HAS NOT PHYSICALLY LOCATED ALL UTILITIES SHOWN. THE SURVEYOR HAS NOT PHYSICALLY LOCATED ALL UTILITIES SHOWN. THE SURVEYOR HAS NOT PHYSICALLY LOCATED ALL UTILITIES SHOWN. THE SURVEYOR HAS NOT PHYSICALLY LOCATED ALL UTILITIES SHOWN.



- ### LEGEND
- FOUND 7/8" O.D.I.P. UNLESS OTHERWISE NOTED (HELD LOCATION) (CONTROL POINT)
 - CONCRETE MONUMENT
 - ⊕ CROSS IN CONCRETE
 - ⊙ MANHOLE
 - ⊙ STORM STRUCTURE
 - ⊙ SANITARY MANHOLE
 - ⊙ VALVE VAULT
 - ⊙ FIRE HYDRANT
 - ⊙ FLARED END SECTION
 - ⊙ UTILITY POLE
 - ⊙ GUY POLE
 - ⊙ OVERHEAD TRAFFIC SIGNAL
 - ⊙ TRAFFIC SIGNAL MANHOLE
 - ⊙ OVERHEAD WIRES
 - ⊙ GAS METER
 - ⊙ ELECTRIC METER
 - ⊙ TRANSFORMER PAD
 - ⊙ TELEPHONE PEDESTAL
 - ⊙ ELECTRIC PEDESTAL
 - ⊙ TELEPHONE MANHOLE
 - ⊙ CABLE TELEVISION PEDESTAL
 - ⊙ ELECTRIC MANHOLE
 - ⊙ VALVE BOX
 - ⊙ B/BOX
 - ⊙ SIGN
 - ⊙ BILLBOARD POLE
 - ⊙ LIGHT
 - ⊙ LIGHT POLE
 - ⊙ HAND HOLE
 - ⊙ MAILBOX
 - ⊙ GAS MARKER
 - ⊙ ELECTRIC MARKER

- ### ABBREVIATIONS
- O.D.I.P. = OUTSIDE DIAMETER IRON PIPE
 - TF = TOP OF FOUNDATION
 - FF = FINISHED FLOOR
 - FED = FLARED END SECTION
 - VCP = VITRIFIED CLAY PIPE
 - DIP = DUCTILE IRON PIPE
 - PVC = POLYVINYL CHLORIDE
 - RCP = REINFORCED CONCRETE PIPE
 - CMP = CORRUGATED METAL PIPE
 - (R) = RECORD BEARING OR DISTANCE
 - (M) = MEASURED BEARING OR DISTANCE
 - (C) = CALCULATED BEARING OR DISTANCE
 - (D) = DEED BEARING OR DISTANCE
 - A = ARC LENGTH
 - R = RADIUS
 - CH = CHORD
 - CB = CHORD BEARING
 - B.S.L. = BUILDING SETBACK LINE
 - U.E. = UTILITY EASEMENT
 - D.E. = DRAINAGE EASEMENT
 - P.U.E. = PUBLIC UTILITY EASEMENT
 - P.O.C. = POINT OF COMMENCEMENT
 - P.O.B. = POINT OF BEGINNING
 - P.U. & D.E. = PUBLIC UTILITY AND DRAINAGE EASEMENT
 - BC = BACK OF CURB
 - BDC = BACK OF DEPRESSION
 - FL = FLOW LINE
 - C = CONCRETE
 - P = PAVEMENT
 - G = GRAVEL
 - EW = EDGE OF WALK
 - TP = TOP OF PIPE
 - IE = INVERT ELEVATION
 - PL = PROPERTY LINE
 - DS = DOWN SPOUT
 - S.F. = SQUARE FEET

- ### LINE LEGEND
- LIMITS OF LAND PER LEGAL DESCRIPTION
 - ADJACENT LAND PARCEL LINE
 - EASEMENT LINE
 - CENTERLINE
 - BUILDING SETBACK LINE
 - SECTION LINE
 - EXISTING CONTOUR

BENCHMARKS:

REFERENCE BENCHMARK:
CITY OF AURORA BENCHMARK 13 SOUTH
ELEVATION = 639.16

SITE BENCHMARKS:
SITE BENCHMARK #1
TAG BOLT ON FIRE HYDRANT AT NORTHEAST CORNER OF LAKES STREET AND CEDAR STREET.
ELEVATION = 673.72
DATUM = NAVD88

SITE BENCHMARK #2
MINI RAILROAD SPIKE ON WEST FACE OF POWER POLE ALONG EASTERLY PROJECT PROPERTY LINE APPROXIMATELY AT MID POINT.
ELEVATION = 665.35
DATUM = NAVD88

UTILITY CONTACTS

Municipality	Cable Television	Electric	Natural Gas	Telecommunications	Water/Sanitary/Storm
Aurora, City of	COMCAST CABLE	ComEd	Nicor	AT&T	Fox Metro Water Reclamation Dist.
44 East Downer Place	Martha Gieras	630-576-7094	gas.maps@nicor.com	630-573-5450	Sandy Medrano or Mike Frankno
Aurora, IL 60507	630.600.6352				630-892-4378
630.892.8811	martha_gieras@cable.comcast.com				smedrano@foxmetro.org
630.892.0741					mfrankino@foxmetro.org
					City of Aurora
					Steve Andras
					630-256-3200
					sandras@aurora-il.org

DATE	BY	REVISIONS
02-15-16 <td>FCM/RS <td></td> </td>	FCM/RS <td></td>	
	SK <td></td>	
	RHM <td></td>	
	BOOK 455 PG 86-88 <td></td>	

PROJECT: 303 NORTH LAKE STREET
AURORA, ILLINOIS

CLIENT: ESM CIVIL SOLUTIONS, LLC
1315 MACOM DRIVE, SUITE 205
NAPERVILLE, ILLINOIS 60564

COMPASS SURVEYING LTD
ALTA SURVEYS • TOPOGRAPHY • CONSTRUCTION STAKING

2631 GINGER WOODS PARKWAY, STE. 100
AURORA, IL 60507
PHONE: (630) 820-9100 FAX: (630) 820-7030 EMAIL: ADMIN@COMPASSSURVEYING.COM