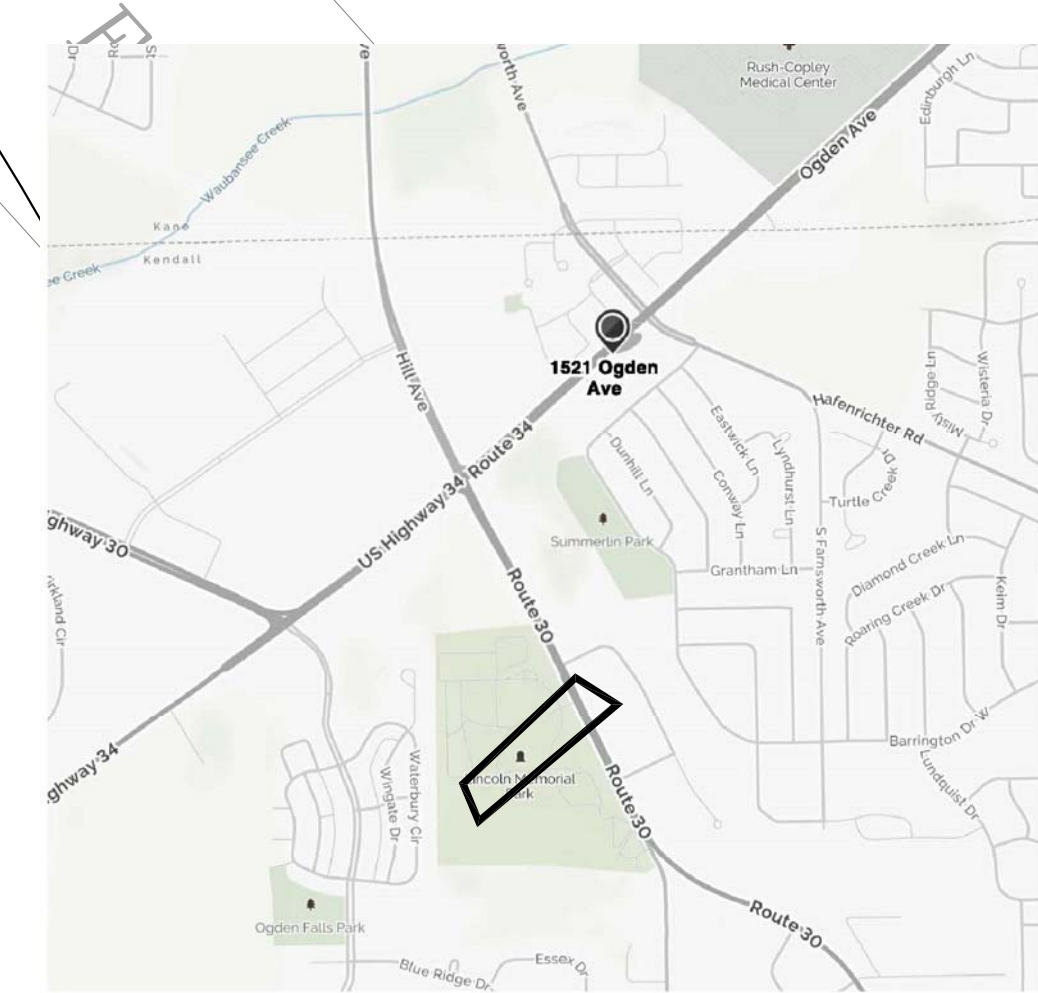
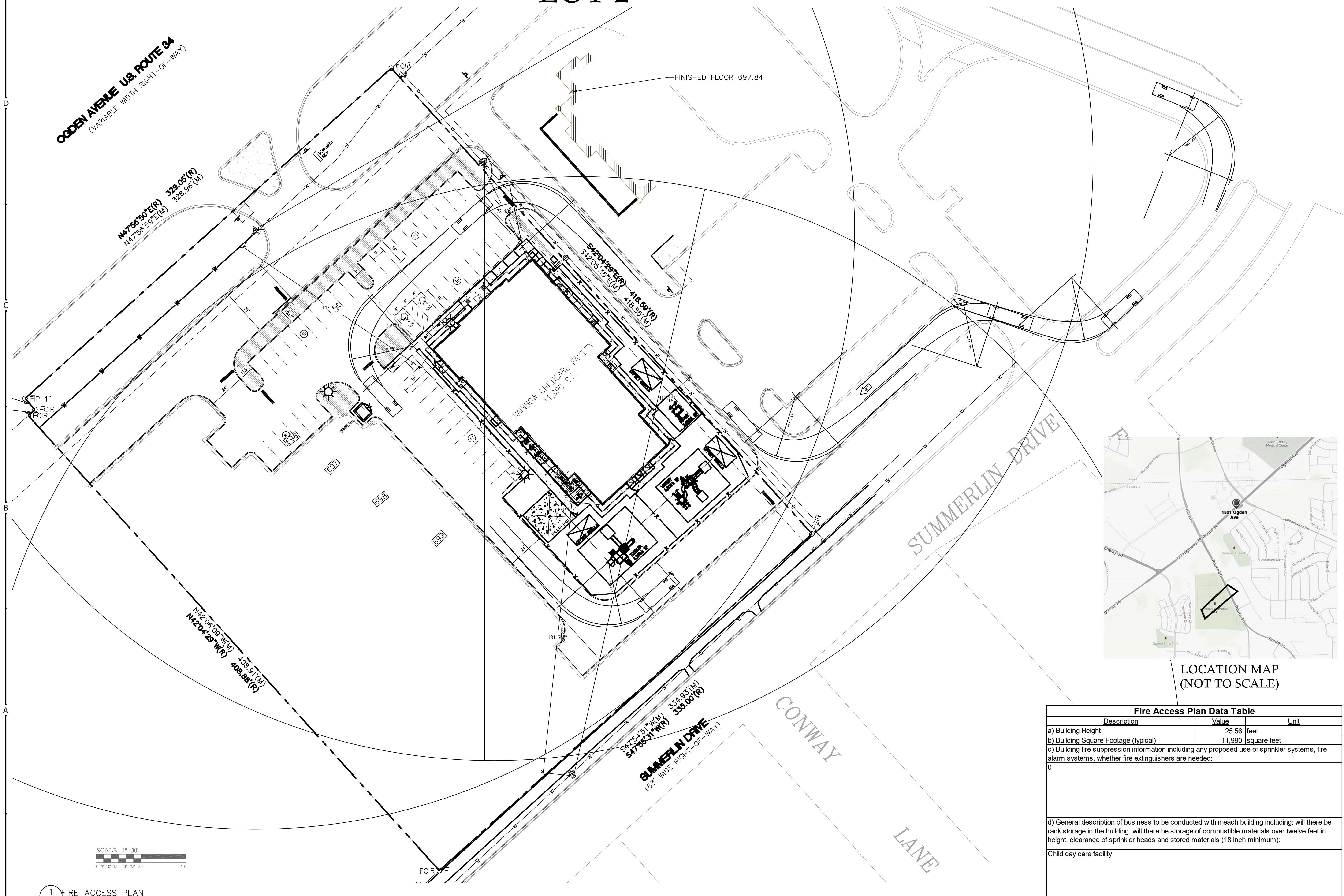


FIRE ACCESS PLAN FOR

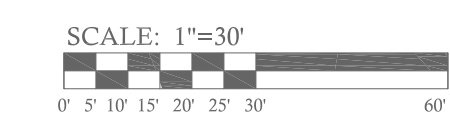
Citizens First National Bank Business Park

LOT 2



LOCATION MAP
(NOT TO SCALE)

Fire Access Plan Data Table		
Description	Value	Unit
a) Building Height	25.56	feet
b) Building Square Footage (typical)	11,990	square feet
c) Building fire suppression information including any proposed use of sprinkler systems, fire alarm systems, whether fire extinguishers are needed:		
0		
d) General description of business to be conducted within each building including: will there be rack storage in the building, will there be storage of combustible materials over twelve feet in height, clearance of sprinkler heads and stored materials (18 inch minimum):		
Child day care facility		

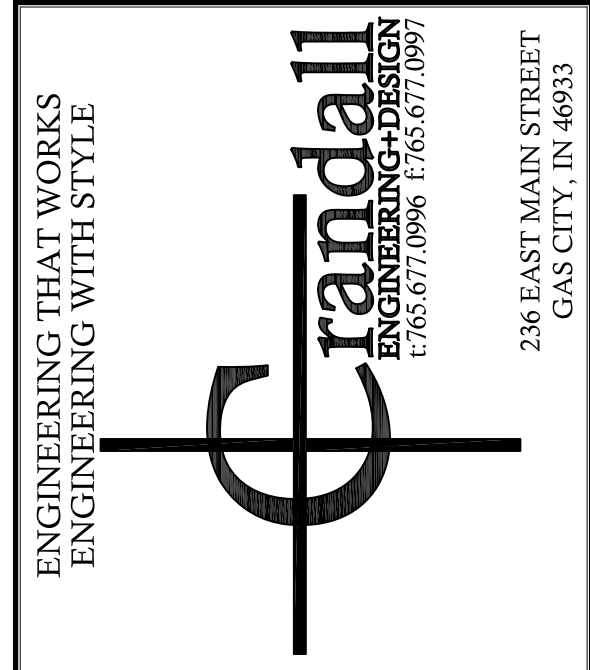


1 FIRE ACCESS PLAN
C600 SCALE (36x24) 1\"/>

REVISIONS
1 06-26-2018 REVISED PER REVIEW COMMENTS



DATE: 05-08-2018
ENGINEER
LISA MEEKER CRANDALL
ILLINOIS REGISTRATION NO. 062.065006
EXPIRES 11-30-2019



CITIZENS FIRST NATIONAL BANK BUSINESS PARK - LOT 2
AURORA, ILLINOIS 60503
814 DEVELOPMENT
1742 CROOKS ROAD
TROY, MICHIGAN 48084
RAINBOW CHILD CARE CENTER
OGDEN AVENUE & FARNSWORTH AVENUE
AURORA, IL 60503

DATE: 06-13-2018 PROJECT NO.: 2018-007
DRAWN BY: AW / XC CHECKED BY: LMC

SHEET TITLE:
FIRE ACCESS PLAN

SHEET NO.:
C600

