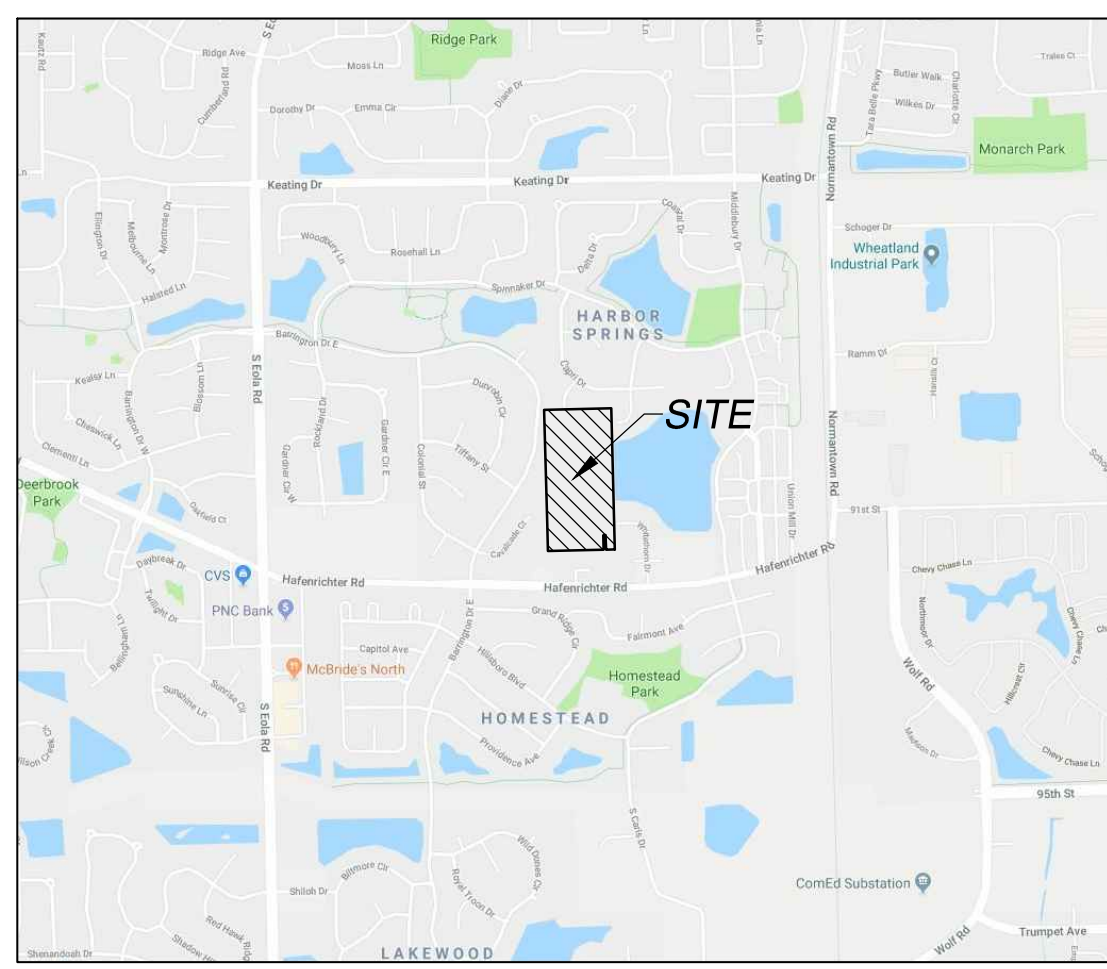


ALTA/NSPS LAND TITLE SURVEY OF NEW SONG SITE AURORA, ILLINOIS

LEGAL DESCRIPTION

PARCEL A LOTS 3 AND 4 OF THE FINAL PLAT OF NEW SONG HIGHLANDS, RECORDED APRIL 4, 2010 AS DOCUMENT R201003466 AND BEING A SUBDIVISION OF PART OF THE WEST HALF OF FRACTIONAL SECTION 5, TOWNSHIP 37 NORTH, RANGE 9 EAST OF THE THIRD PRINCIPAL MERIDIAN, WILL COUNTY, ILLINOIS.

PARCEL B LOT 2 OF THE FINAL PLAT OF NEW SONG HIGHLANDS, RECORDED APRIL 4, 2010 AS DOCUMENT R201003466 AND BEING A SUBDIVISION OF PART OF THE WEST HALF OF FRACTIONAL SECTION 5, TOWNSHIP 37 NORTH, RANGE 9 EAST OF THE THIRD PRINCIPAL MERIDIAN, WILL COUNTY, ILLINOIS.



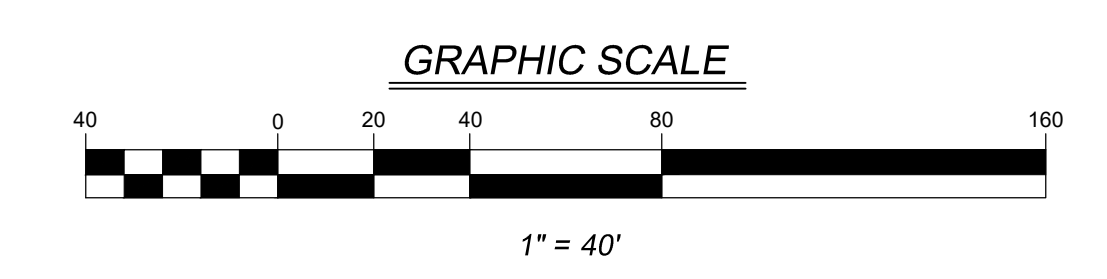
VICINITY MAP NOT TO SCALE

AREA

Table with 2 columns: Parcel, Area (sq. ft. and acres). Rows for Parcel A, Parcel B, and Total.

FLOOD HAZARD NOTE

PART OF THIS PROPERTY IS IN AREAS DETERMINED TO BE IN SPECIAL FLOOD HAZARD AREAS INDICATED BY 100-YEAR FLOOD, NO BASE ELEVATION DETERMINED (ZONE A), AND PART IS IN AREAS DETERMINED TO BE OUTSIDE THE 500-YEAR FLOODPLAIN (ZONE X) AS DEFINED BY THE FEDERAL EMERGENCY MANAGEMENT AGENCY'S FLOOD INSURANCE RATE MAP OF WILL COUNTY, ILLINOIS AND INCORPORATED AREAS (COMMUNITY PANEL NO. 175070035) EFFECTIVE DATE 08/19/95, AND BY LOWER DATED MAY 23, 1999.



BASIS OF BEARINGS

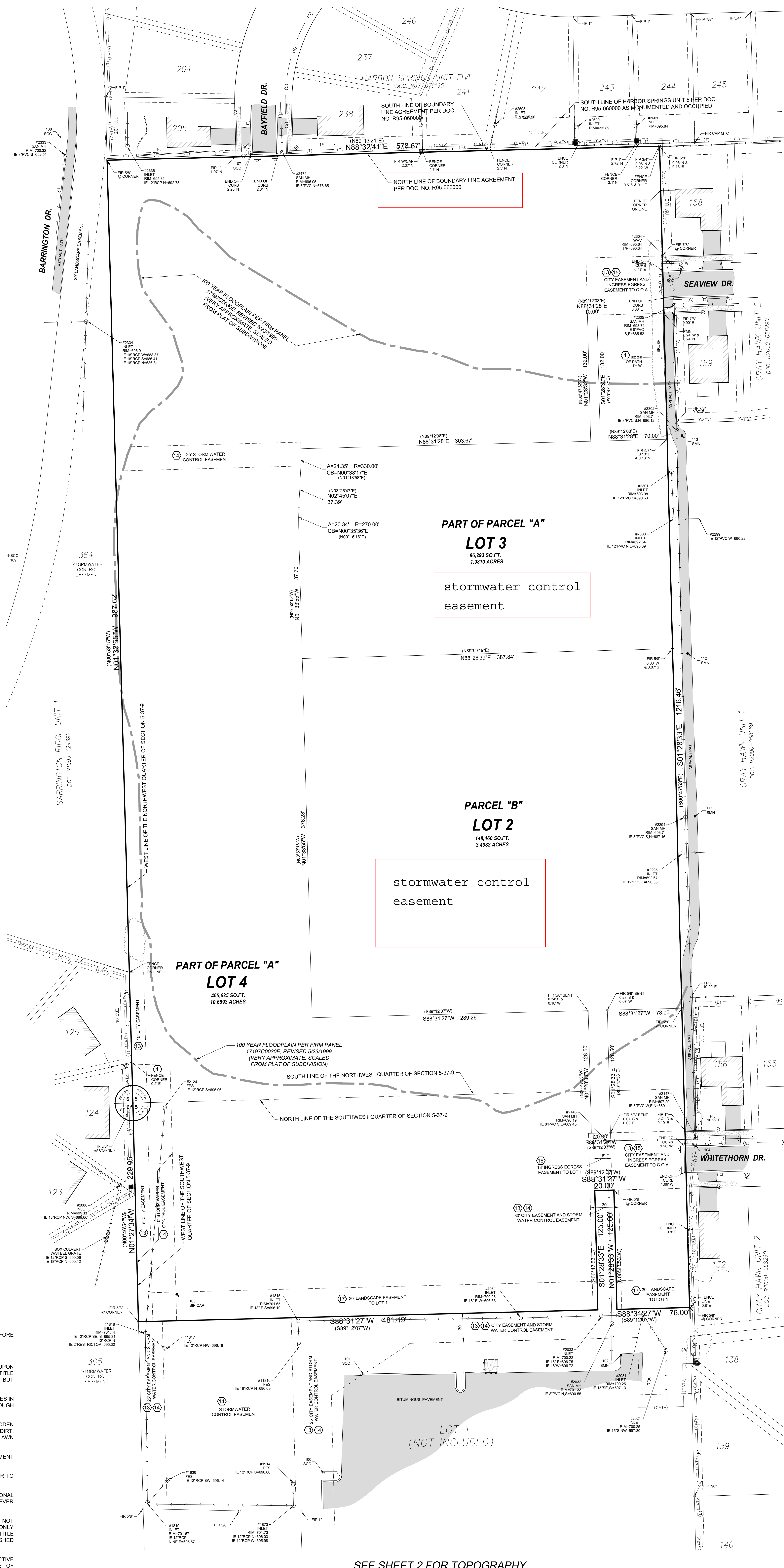
THE BASIS OF BEARINGS IS THE STATE PLANE COORDINATE SYSTEM (SPCS) NAD 83 (2011) ZONE 1201 (ILLINOIS EAST) WITH PROJECT ORIGIN AT LATITUDE 41-42-55.11887 N LONGITUDE 89-14-38.34442 W ELLIPSOIDAL HEIGHT: 595.409 SFT GROUND SCALE FACTOR: 1.000027327 ALL MEASUREMENTS ARE ON THE GROUND.

LEGEND

Legend table listing symbols for various features like cable TV pedestal, traffic light pole, gas meter, etc.

ABBREVIATIONS

Abbreviations table listing symbols for property lines, easements, and other features.



UTILITY ATLAS NOTES: J.U.L.I.E. DESIGN STAGE REQUEST DIG NUMBER X2740974 RECEIVED 10/01/18. CONTACTS PROVIDED BY J.U.L.I.E. & LISTED BELOW WERE CONTACTED BY V3 VIA FAX, REQUESTING UTILITY ATLAS INFORMATION ON 10/01/18.

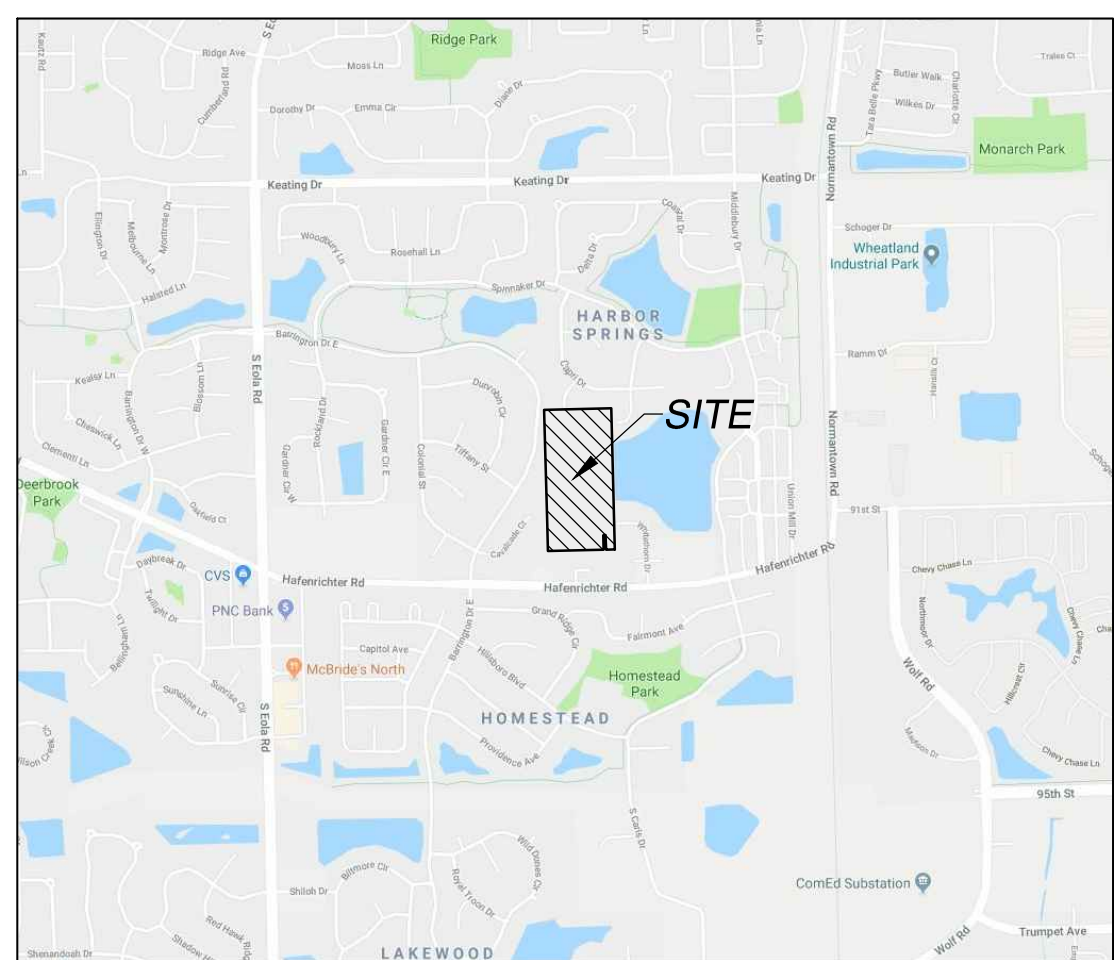
NOTES FROM SCHEDULE B: Table with 2 columns: EXCEPTIONS, PLOTTED HEREON. Lists items like fence over west line, boundary line agreement, etc.

GENERAL NOTES: 1. COMPARE THIS PLAT, LEGAL DESCRIPTION AND ALL SURVEY POINTS AND MONUMENTS BEFORE ANY CONSTRUCTION... 2. DO NOT SCALE DIMENSIONS FROM THIS PLAT...

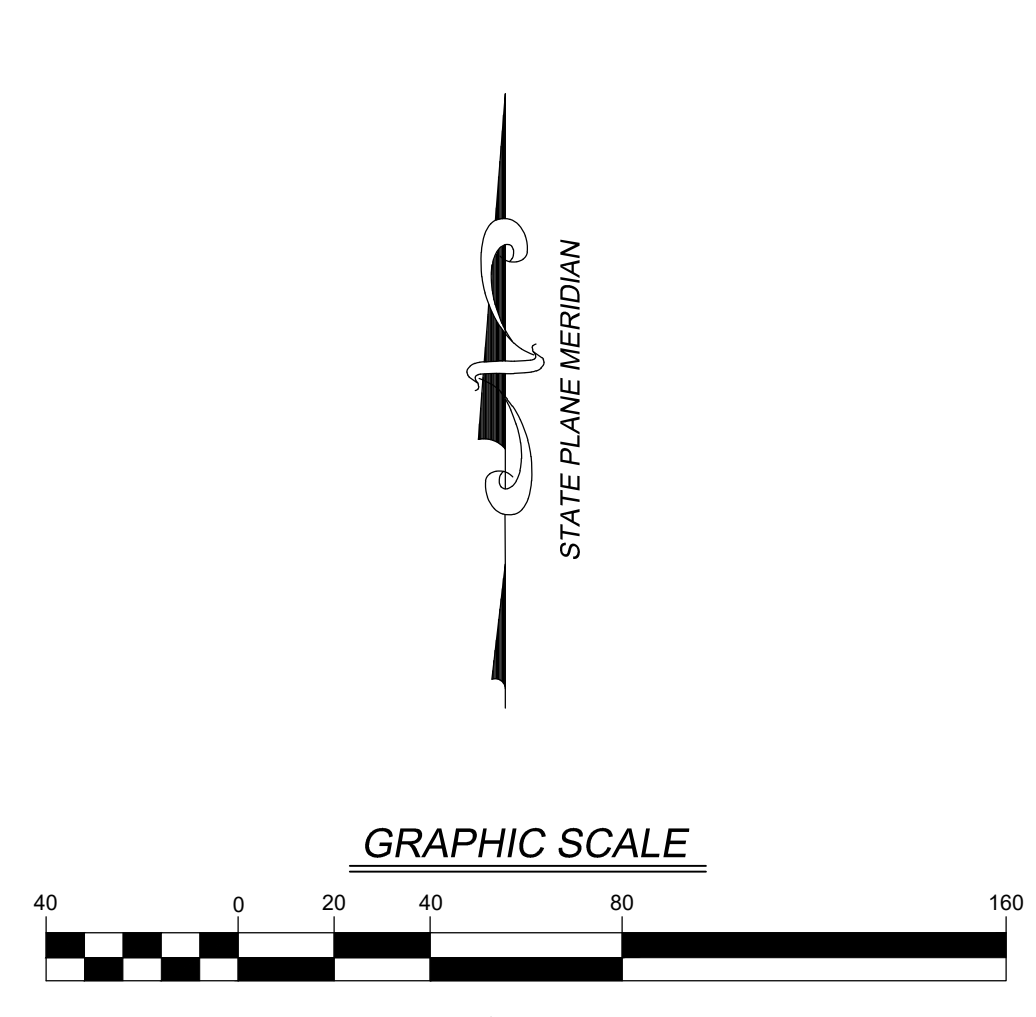
SURVEYOR'S CERTIFICATE: STATE OF ILLINOIS ) SS COUNTY OF DUPAGE ) TO: PULTE HOMES, L.L.C. A MICHIGAN LIMITED LIABILITY COMPANY; OAKRILL SALES, L.L.C. AN ILLINOIS LIMITED LIABILITY COMPANY; CHICAGO TITLE INSURANCE COMPANY POP TITLE, INC.

# ALTA/NSPS LAND TITLE SURVEY OF NEW SONG SITE AURORA, ILLINOIS

PART OF THE WEST HALF OF FRACTIONAL SECTION 5, TOWNSHIP 37 NORTH,  
RANGE 9 EAST OF THE THIRD PRINCIPAL MERIDIAN, WILL COUNTY, ILLINOIS.



VICINITY MAP  
NOT TO SCALE



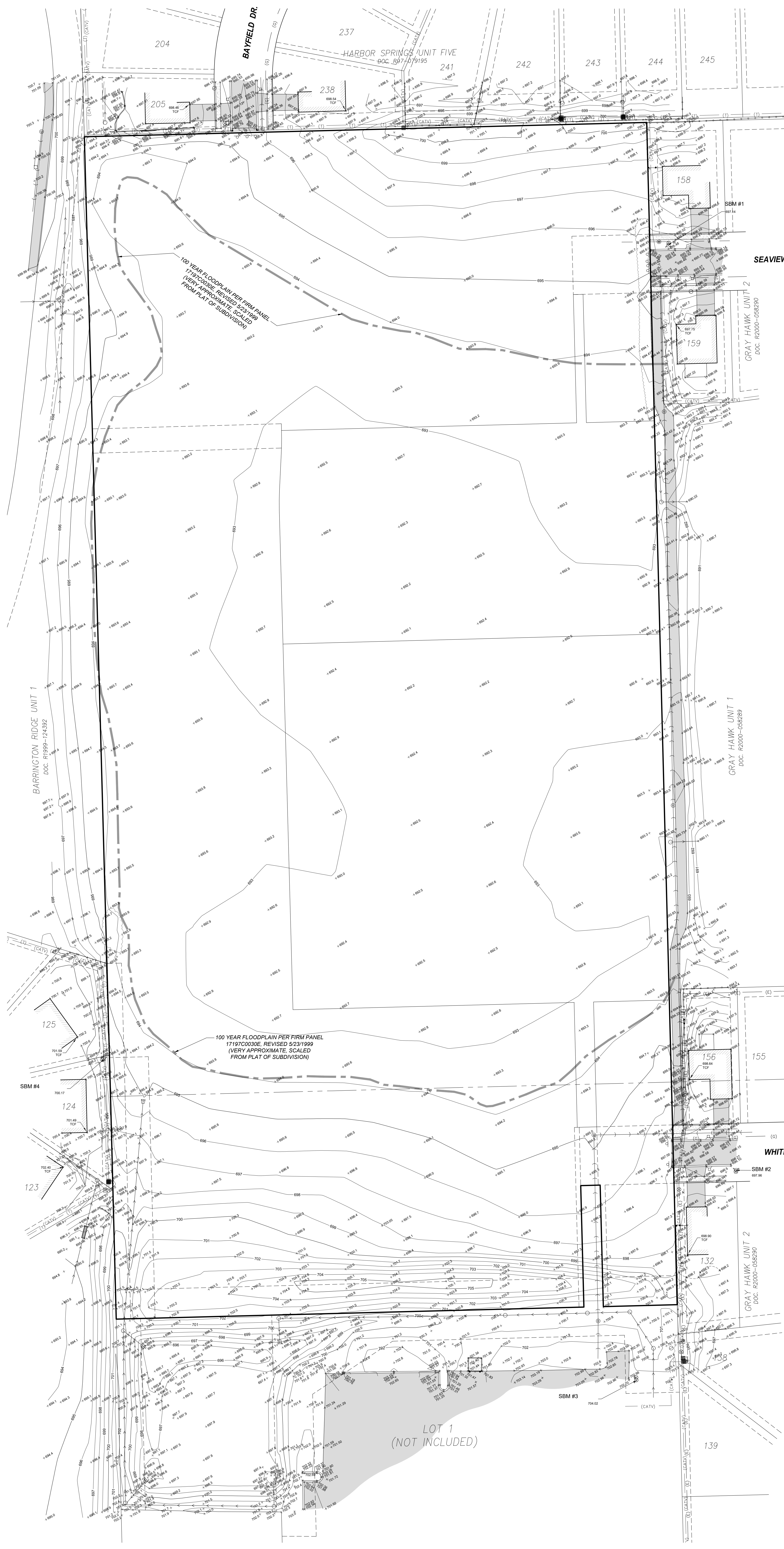
### BASIS OF BEARINGS

THE BASIS OF BEARINGS IS THE STATE PLANE COORDINATE SYSTEM (SPCS) NAD 83 (2011) ZONE 1201 (ILLINOIS EAST) WITH PROJECT ORIGIN AT LATITUDE 41-42-55.11887 N LONGITUDE 88-14-39.34442 W ELLIPSOIDAL HEIGHT: 586.409 SFT GROUND SCALE FACTOR 1.0000527327 ALL MEASUREMENTS ARE ON THE GROUND.

### LEGEND

- CABLE TV FEDESTAL
- TRAFFIC LIGHT POLE
- TRAFFIC CONTROL BOX
- TRAFFIC CONTROL VAULT
- TRAFFIC LIGHT
- TELEPHONE FEDESTAL
- TELEPHONE MANHOLE
- PAINTED TELEPHONE LINE
- FIBER OPTIC CABLE LINE
- ANCHOR
- TELEPHONE POLE
- POWER POLE
- LIGHT STIMULATOR
- ELECTRIC MANHOLE
- ELECTRIC TRANSFORMER PAD
- ELECTRIC METER
- ELECTRIC JUNCTION BOX
- ELECTRIC VAULT
- ELECTRIC SERVICE OUTLET BOX
- PAINTED ELECTRIC LINE
- TRANSFORMER PAD
- PAINTED GAS LINE
- GAS VALVE
- GAS METER
- GAS VALVE VAULT
- PIPELINE MARKER
- MONITORING WELL
- POST INDICATOR VALVE
- WELL HEAD
- MALLBOX
- WATER VALVE
- WATER VALVE VAULT
- PAINTED WATER LINE
- SPRINKLER HEAD
- WATER METER
- WATER METER CONCRETE
- FOUND IRON ROD
- FOUND IRON MARKER
- FOUND IRON ROD
- FOUND IRON PIPE
- FOUND IRON BAR
- FOUND BRASS MONUMENT
- FOUND BRASS
- SET IRON PIPE
- SET IRON MARKER
- SET IRON POINT
- SET CONCRETE MONUMENT
- HEADWALL
- CURB INLET
- STORM MANHOLE
- FLARED END SECTION
- CLEANOUT
- SANITARY MANHOLE
- ROSE BOX
- HYDRANT
- WATER VALVE
- PAINTED WATER LINE
- SPRINKLER HEAD
- WATER METER
- WATER METER CONCRETE
- FOUND IRON ROD
- FOUND IRON MARKER
- FOUND IRON ROD
- FOUND IRON PIPE
- FOUND IRON BAR
- FOUND BRASS MONUMENT
- FOUND BRASS
- SET IRON PIPE
- SET IRON MARKER
- SET IRON POINT
- SET CONCRETE MONUMENT

- ### ABBREVIATIONS
- PROPERLY LINE
  - EXISTING RIGHT-OF-WAY LINE
  - PROPOSED RIGHT-OF-WAY LINE
  - LOT LINE
  - CENTERLINE
  - EXISTING EASEMENT LINE
  - PROPOSED EASEMENT LINE
  - BUILDING SETBACK LINE
  - SECTION LINE
  - DIVISIONAL SECTION LINE
  - EXISTING FENCE LINE (WOOD)
  - EXISTING FENCE LINE (WIRE)
  - GUARDRAIL
  - RAILROAD TRACKS
  - UNDERGROUND CABLE TV
  - UNDERGROUND CABLE (ATLAS INFO)
  - UNDERGROUND FIBER OPTIC CABLE (ATLAS)
  - UNDERGROUND ELECTRIC
  - UNDERGROUND ELECTRIC (ATLAS INFO)
  - UNDERGROUND TELEPHONE
  - UNDERGROUND TELEPHONE (ATLAS INFO)
  - GAS MAIN
  - GAS MANHOLE (ATLAS INFO)
  - WATER MAIN (ATLAS INFO)
  - WATER SERVICE (ATLAS INFO)
  - SANITARY SEWER
  - SANITARY SEWER (ATLAS INFO)
  - STORM SEWER
  - STORM SEWER (ATLAS INFO)
  - EDGE OF WATER
  - OVERHEAD WIRES
  - CURB
  - DEPRESSED CURB
  - EXISTING CONTOUR LINE
  - FLOOR PLAN LINE
  - ASPHALT PAVING OR WATER (LABELED)
  - UNPAVED ROAD
  - CONCRETE
  - WETLANDS
  - EXISTING BUILDING
  - MARSH AREA
  - DETECTABLE WARNING PAD
  - EXISTING TOP OF CURB ELEVATION
  - EXISTING FLOW LINE ELEVATION
  - EXISTING SPOT ELEVATION
  - FINISHED FLOOR
  - TOP OF FOUNDATION
  - CONCRETE TO METAL PIPE
  - REINFORCED CONCRETE PIPE
  - VITRIFIED CLAY PIPE
  - FRM. FRAME
  - IRP. IRON
  - TOP OF CURB
  - DEP. DEPRESSED CURB
  - SET. SET
  - EP. EDGE OF PAVEMENT
  - FL. ON LINE
  - CONC. CONCRETE
  - BT. BITUMEN/US
  - WM. WOODS
  - CW. CONCRETE WALK
  - TM. TOP OF WALL
  - BT. BOTTOM OF WALL
  - BM. BENCH MARK
  - IP. IRON PIPE
  - FL. FINISHED END SECTION
  - IRP. IRON PIPE
  - SD. STORM DRAIN
  - SM. SANITARY SEWER
  - N. NORTH
  - S. SOUTH
  - W. WEST
  - E. EAST
  - OB. OBSTRUCTION
  - A. ARC LENGTH
  - CB. CHORD BEARING
  - U.E. UTILITY EASEMENT
  - M.E. MUNICIPAL UTILITY EASEMENT
  - IRP. IRON PIPE
  - PC. POINT OF CURVATURE
  - PC. POINT OF BEGINNING CURVATURE
  - PT. POINT OF TANGENCY
  - MEAS. MEASURED DATUM
  - CALC. CALCULATED DATUM
  - DEED. INFORMATION TAKEN FROM DEED
  - ETB. EXCERPTION TO AN EASEMENT
  - SCHEDULE B EXCERPTION



**BENCHMARK**

SOURCE:  
STATION DESIGNATION: 0189 (PID: DK3239)  
ESTABLISHED BY: NGS  
DATE: MAY 2008  
ELEVATION: 702.83 (PUBLISHED), 702.90 (MEASURED AND HELD)  
DATUM: NAVD83  
DESCRIPTION: THE STATION IS 107.6 FT (32.8 M) EAST OF THE CENTERLINE OF STATE ROUTE 50, 31.2 FT (9.6 M) SOUTH OF THE CENTERLINE OF 83RD STREET, 36.1 FT (11.0 M) WEST OF A GAS POST, AND 24.1 FT (7.3 M) NORTHEAST OF AN ELECTRIC MANHOLE. THE MONUMENT IS A BRASS DISK ON THE NORTH SIDE OF A CONCRETE TRAFFIC SIGNAL BASE.

**SITE**

STATION DESIGNATION: SBM #1  
ESTABLISHED BY: V3  
DATE: 10-01-18  
ELEVATION: 697.14 (MEASURED)  
DATUM: NAVD83  
DESCRIPTION: NORTHWEST TAG BOLT ON FIRE HYDRANT ON NORTH SIDE OF SEAVIEW DRIVE.

STATION DESIGNATION: SBM #2  
ESTABLISHED BY: V3  
DATE: 10-01-18  
ELEVATION: 697.06 (MEASURED)  
DATUM: NAVD83  
DESCRIPTION: SOUTHEAST TAG BOLT ON FIRE HYDRANT ON SOUTH SIDE OF WINTERTHORN DRIVE.

STATION DESIGNATION: SBM #3  
ESTABLISHED BY: V3  
DATE: 10-01-18  
ELEVATION: 704.02 (MEASURED)  
DATUM: NAVD83  
DESCRIPTION: SOUTHEAST TAG BOLT ON FIRE HYDRANT ON EAST SIDE OF DRIVE, NORTH OF NEW SONG COMMUNITY CHURCH.

STATION DESIGNATION: SBM #4  
ESTABLISHED BY: V3  
DATE: 10-01-18  
ELEVATION: 700.17 (MEASURED)  
DATUM: NAVD83  
DESCRIPTION: NORTHEAST TAG BOLT ON FIRE HYDRANT IN REAR YARDS BETWEEN LOTS 124 AND 125 IN BARRINGTON RIDGE UNIT 1.

THE ELEVATIONS ABOVE WERE KNOWN TO BE ACCURATE AT THE TIME THEY WERE ESTABLISHED. V3 DOES NOT CERTIFY TO THE ACCURACY THEREAFTER, NOR ASSUMES RESPONSIBILITY FOR THE MISUSE OR MIS-INTERPRETATION OF THE INFORMATION SHOWN HEREON.

IT IS ADVISED THAT ALL OF THE ABOVE ELEVATIONS ARE CHECKED BETWEEN EACH OTHER AND VERIFY A MINIMUM OF 3 SURROUNDING UTILITY RIM ELEVATIONS AND ANY ADJACENT BUILDING FINISHED FLOOR OR TOP OF FOUNDATION ELEVATIONS SHOWN HEREON PRIOR TO USE OR COMMENCEMENT OF ANY CONSTRUCTION OR OTHER WORK.

PERSONS USING THIS INFORMATION ARE TO CONTACT V3 IMMEDIATELY WITH ANY DISCREPANCIES FOUND PRIOR TO THE START OF ANY WORK.

SEE SHEET 1 FOR BOUNDARY AND UTILITIES