

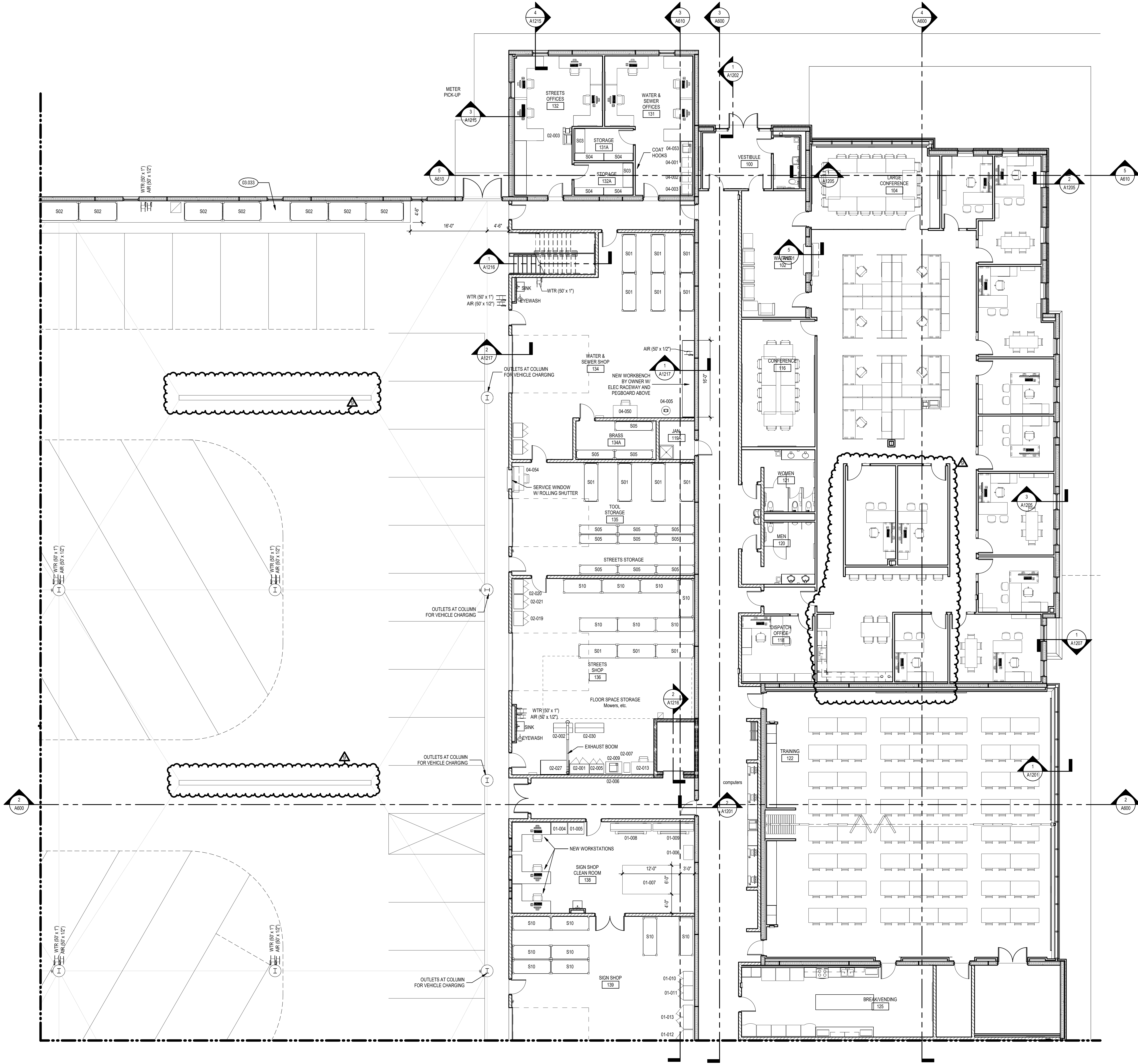
## ALTERNATE NO. 3

## SHELVING SCHEDULE

Mark	Type	Width	Depth	Height	Shelf Count	Count	Comments
T/1ST FLR.							
S01	Storage Rack - 96"W x 36"D x 96"H (3 shelves)	8'-0"	3'-0"	8'-0"	3	32	PALLET RACK SHELVING, 5,000 LB CAPACITY PER SHELF
S02	Storage Rack - 96"W x 48"D x 144"H (3 shelves)	8'-0"	4'-0"	12'-0"	3	51	PALLET RACK SHELVING, 5,000 LB CAPACITY PER SHELF
S03	Storage Shelving - 60"W x 24"D x 96"H (5 shelves)	5'-0"	2'-0"	8'-0"	5	2	HEAVY-DUTY STEEL SHELVING, 3,000 LB CAPACITY PER SHELF, 12,500 LB TOTAL
S04	Storage Shelving - 72"W x 18"D x 96"H (5 shelves)	6'-0"	1'-6"	8'-0"	5	4	HEAVY-DUTY STEEL SHELVING, 2,750 LB CAPACITY PER SHELF, 12,500 LB TOTAL
S05	Storage Shelving - 96"W x 24"D x 96"H (5 shelves)	8'-0"	2'-0"	8'-0"	5	12	HEAVY-DUTY STEEL SHELVING, 2,500 LB CAPACITY PER SHELF, 12,500 LB TOTAL
S10	Storage Shelving - 96"W x 36"D x 96"H (6 shelves)	8'-0"	3'-0"	8'-0"	6	20	HEAVY-DUTY STEEL SHELVING, 2,500 LB CAPACITY PER SHELF, 12,500 LB TOTAL
S11	Storage Shelving - 96"W x 24"D x 96"H (6 shelves)	8'-0"	2'-0"	8'-0"	6	27	HEAVY-DUTY STEEL SHELVING, 2,500 LB CAPACITY PER SHELF, 12,500 LB TOTAL
S12	Storage Shelving - 72"W x 24"D x 96"H (6 shelves)	6'-0"	2'-0"	8'-0"	6	4	HEAVY-DUTY STEEL SHELVING, 2,750 LB CAPACITY PER SHELF, 12,500 LB TOTAL
S14	Storage Rack - 120"W x 36"D x 144"H (3 shelves)	10'-0"	3'-0"	12'-0"	3	4	PALLET RACK SHELVING, 5,000 LB CAPACITY PER SHELF
S19	Storage Shelving - 48"W x 24"D x 96"H (6 shelves)	4'-0"	2'-0"	8'-0"	6	18	HEAVY-DUTY STEEL SHELVING, 3,000 LB CAPACITY PER SHELF, 12,500 LB TOTAL CAPACITY
S20	Storage Rack - 144"W x 48"D x 96"H (2 shelves)	12'-0"	4'-0"	8'-0"	2	4	PALLET RACK SHELVING, 5,000 LB CAPACITY PER SHELF
T/2ND FLR.							
S15	Storage Rack - 120"W x 36"D x 96"H (2 shelves)	10'-0"	3'-0"	8'-0"	2	42	PALLET RACK SHELVING, 5,000 LB CAPACITY PER SHELF

## EQUIPMENT SCHEDULE

Mark	Type	Power	Plug	Air	Water	Owner Furnished	Owner Relocated	Owner Installed	Contractor Relocated	Contractor Installed	Contractor Provided	Comments	Data
01-001	Band Saw	115V, 10A	X				X	X					
01-002	Workbench - 36"D						X	X					
01-003	Bench Grinder	115V, 5A	X				X	X					
01-004	Flat File Cabinet - 24" x 36" Sheet Size						X	X					
01-005	Flat File Cabinet - 24" x 36" Sheet Size						X	X					
01-006	Sewing Machine	115V, 10A	X				X	X					
01-007	Sign Press Table	115V	X	1/2" airline		X		X					
01-008	Sign Plotter - 102"W	115V, 10A	X				X	X			Ventilation needed		X
01-009	Plotter	115V, 10A	X				X	X			Ventilation needed		X
01-010	Cabinet - 36"W x 24"D x 72"H						X	X					
01-011	Cabinet - 36"W x 24"D x 72"H						X	X					
01-012	Fire Cabinet - 60"W x 24"D x 60"H						X	X					
01-013	Fire Cabinet - 60"W x 24"D x 60"H						X	X					
02-001	Cabinet - 48"W x 24"D x 84"H						X	X					
02-002	Tool Cabinet						X	X					
02-003	Copier-Floor	120V, 15A	X				X	X					X
02-005	Cabinet - 36"W x 24"D x 72"H						X	X					
02-006	Printer - LaserJet	120V, 3A	X				X	X					X
02-007	File Cabinet						X	X					
02-009	Flat File Cabinet - 24" x 36" Sheet Size						X	X					
02-013	Desk - 60" x 30"	115V, 5A	X				X	X				Power for computer/monitor/etc.	X
02-015	Pressure Washer	230V, 29A, 3Ph	Hardwired		5 GPM		X	X				390,025 BTU/hr NG, 8" exhaust stack	
02-016	Ice Cooler	115V, 7.5A	X				X	X					
02-019	Cabinet - 36"W x 24"D x 72"H						X	X					
02-020	Cabinet - 36"W x 24"D x 72"H						X	X					
02-021	Cabinet - 36"W x 24"D x 72"H						X	X					
02-023	Bench Grinder	115V, 10A	X				X	X					
02-026	Drill Press	115/230V, 12/6A	X				X	X					
02-027	Workbench - 36"D						X	X					
02-030	Tool Cabinet - Large						X	X					
02-053	Table - 72" x 36"					X		X					
02-054	Fire Cabinet					X		X					
02-055	Fire Cabinet					X		X					
03-000	Gas Cylinder Cage						X	X				Gas Cylinder Cage	
03-001	Cabinet - 36"W x 24"D x 72"H						X	X					
03-003	Cabinet - 36"W x 24"D x 72"H						X	X				Hose Cabinet	
03-005.1	Cabinet - 48"W x 24"D x 84"H						X	X					
03-005.2	Cabinet - 48"W x 24"D x 84"H						X	X					
03-005.3	Cabinet - 48"W x 24"D x 84"H						X	X					
03-008	Work Bench - 96"W x 30"D	115V, 20A	Quad Recep.	Shop Air - Quick Connect			X	X					
03-010	Tool Cabinet						X	X					
03-011	Tool Cabinet						X	X					
03-012	Cabinet - 36"W x 24"D x 72"H						X	X					
03-013	Cabinet - 36"W x 24"D x 72"H						X	X					
03-015	Work Bench - 96"W x 30"D	115V, 20A	Quad Recep.	Shop Air - Quick Connect			X	X					
03-016	Work Bench - 96"W x 30"D	115V, 20A	Quad Recep.	Shop Air - Quick Connect			X	X					
03-022	Tire Balancer	220V, 20A	X				X	X					
03-023	Tire Changer			15 CFM @ 150 PSI			X	X					
03-024	Lathe	115/230V, 15/7.5A	X				X	X					
03-026	Work Bench - 48"W x 30"D	115V, 20A	Quad Recep.	Shop Air - Quick Connect			X	X					
03-027	Tire Mount	115V, 0.5A	X				X	X				Power for task lighting only	
03-028	Lathe	115/230V, 15/7.5A	X				X	X					
03-031	Tool Cabinet						X	X					
03-032	Work Bench - 60"W x 30"D	115V, 20A	Quad Recep.	Shop Air - Quick Connect			X	X					
03-035	Tool Cabinet - Large						X	X					
03-036	Flexarc AC Welder	220V, 50A	X				X	X					
03-037	Tool Cabinet						X	X					
03-039	Tool Cabinet						X	X					
03-041	Work Bench - 72"W x 30"D	115V, 20A	Quad Recep.	Shop Air - Quick Connect			X	X					
03-042	Ginder w/ Stand	115V, 3.5A	X				X	X					
03-045	Parts Washer	120V, 8.3A	X				X	X					
03-046	Tool Cabinet - Large						X	X					
03-047	Tool Cabinet - Large						X	X					
03-048	Tool Cabinet - Large						X	X					
03-049	Tool Cabinet - Large						X	X					
03-052	Tool Cabinet - Extra Large						X	X					
03-057	Work Bench - 72"W x 30"D						X	X					
03-058	SM18-EL	208-230V, 17A	Hardwired	90psi -120psi					X	X		Provide underground conduit to SW lift post for utility connections. Provide additional duplex outlet and air quick connect at SW and NE lift posts.	
03-059	Mobile Column Lift	220V, 8A	X				X	X					
03-060	Mobile Column Lift	220V, 8A	X				X	X					
03-061	Mobile Column Lift	220V, 8A	X				X	X					
03-062	Mobile Column Lift	220V, 8A	X				X	X					
03-063	Mobile Column Lift	220V, 8A	X				X	X					
03-064	Mobile Column Lift	220V, 8A	X				X	X					
03-065	Hyd. Press	115/230V, 8.6/4.3A	X				X	X					
03-066	Work Bench - 48"W x 30"D	115V, 20A	Quad Recep.	Shop Air - Quick Connect			X	X					
03-067	Hose Crimping Machine	110V, 15A	X				X	X					
03-068	Sand Blasting Cabinet			12 CFM @ 80PSI			X	X					
03-069	Rot. Oven	120/240V, 8/4A	X				X	X					
03-070	Chop Saw	120V, 15A	X				X	X					
03-071	Drill Press	115/230V, 23/11.5A	X				X	X					
03-072	Ginder w/ Stand	115/230V, 20/10A	X				X	X					
03-073	Belt and Disc Sander	115V, 8A	X				X	X					
03-074	Abrasive Cut-Off Saw	120V, 15A	X				X	X					
03-075	Horizontal Band Saw	220V, 7A	L6-20P				X	X					
03-080	Cabinet - 36"W x 24"D x 72"H						X	X					
03-081	Tool Cabinet						X	X					
03-084	Tool Cabinet - Large						X	X					
03-098	Ginder w/ Stand	115V, 3.4A	X				X	X					
03-099	Work Bench - 96"W x 30"D	115V, 20A	Quad Recep.	Shop Air - Quick Connect			X	X					
03-100	Tool Cabinet - Large						X	X					
03-101	Work Bench - 96"W x 30"D	115V, 20A	Quad Recep.	Shop Air - Quick Connect			X	X					
03-102	Work Bench - 60"W x 30"D	115V, 20A	Quad Recep.	Shop Air - Quick Connect			X	X					
03-103	Tig Welder	120-480V, 40-6A, 1 or 3ph	X				X	X				Wire Feeder - Add. 115V, 2.8A	
03-104	Arc Welder	230/460V, 76/38A, 3ph	X				X	X					
03-105	Fume Extractor	115V, 11A	X				X	X					
03-106	Arc Welder	115V, 20 or 25A	X				X	X					
03-109	Work Bench - 48"W x 30"D	115V, 20A	Quad Recep.	Shop Air - Quick Connect			X	X					
03-110	Tool Cabinet						X	X					
03-111	Parts Washer	120V, 8.3A	X				X	X					
03-112	Work Bench - 96"W x 30"D	115V, 20A	Quad Recep.	Shop Air - Quick Connect			X	X					
03-113	Cabinet - 36"W x 24"D x 72"H						X	X					
03-114	Tool Cabinet - Large						X	X					
03-116	Tool Cabinet						X	X					
03-119	Work Bench - 96"W x 30"D	115V, 20A	Quad Recep.	Shop Air - Quick Connect			X	X					
03-120	Parts Washer	115V, 13A	X				X	X					
03-122	Cabinet - 48"W x 24"D x 84"H						X	X				Flammable Cabinet	
03-124	Work Bench - 48"W x 30"D	115V, 20A	Quad Recep.	Shop Air - Quick Connect			X	X					
03-125	Work Bench - 48"W x 30"D	115V, 20A	Quad Recep.	Shop Air - Quick Connect			X	X					
03-126	Triple Sink					Domestic Hot/Cold			X	X			
03-127	Cabinet - 36"W x 24"D x 72"H						X	X					
03-128	Tool Cabinet						X	X					
03-129	Work Bench - 96"W x 30"D	115V, 20A	Quad Recep.	Shop Air - Quick Connect			X	X					
03-130	Tool Cabinet - Large						X	X					
03-132	Tool Cabinet						X	X					
03-133	Tool Cabinet - Large						X	X					
03-135	Tool Cabinet - Large						X	X					
03-136	Ginder w/ Stand	115/230V, 20/10A	X				X	X					
03-137	Work Bench - 60"W x 30"D	115V, 20A	Quad Recep.	Shop Air - Quick Connect			X	X					
03-138	Work Bench - 96"W x 30"D	115V, 20A	Quad Recep.	Shop Air - Quick Connect			X	X					
03-144	Arc Welder	230/460V, 76/38A, 3ph	X				X	X					
03-145	Plasma Cutter - Powermax 45XP	200-240V, 39/32A	X				X	X					
03-150	Rotary LIF - SPO12 w/ SHOCKWAVE	120V, 20A circuit	Hardwired	Shop Air - Quick Connect					X	X		Provide underground conduit to W lift post for utility connections. Provide additional duplex outlet and air quick connect at W lift post.	
03-151	Rotary LIF - SPO12 w/ SHOCKWAVE	120V, 20A circuit	Hardwired	Shop Air - Quick Connect					X	X		Provide underground conduit to SW lift post for utility connections. Provide additional duplex outlet and air quick connect at SW lift post.	
03-152	Rotary LIF - SPO12 w/ SHOCKWAVE	120V, 20A circuit	Hardwired	Shop Air - Quick Connect						X		Provide underground conduit to NW lift post for utility connections. Provide additional duplex outlet and air quick connect at NW lift post.	
03-153	Rotary LIF - SPO12 w/ SHOCKWAVE	120V, 20A circuit	Hardwired	Shop Air - Quick Connect							X	Provide underground conduit to NW lift post for utility connections. Provide additional duplex outlet and air quick connect at NW lift post.	
03-154													



FIRST FLOOR PLAN - AREA 'A' - EQUIPMENT 1  
SCALE: 1/8" = 1'-0"

## KEYNOTES

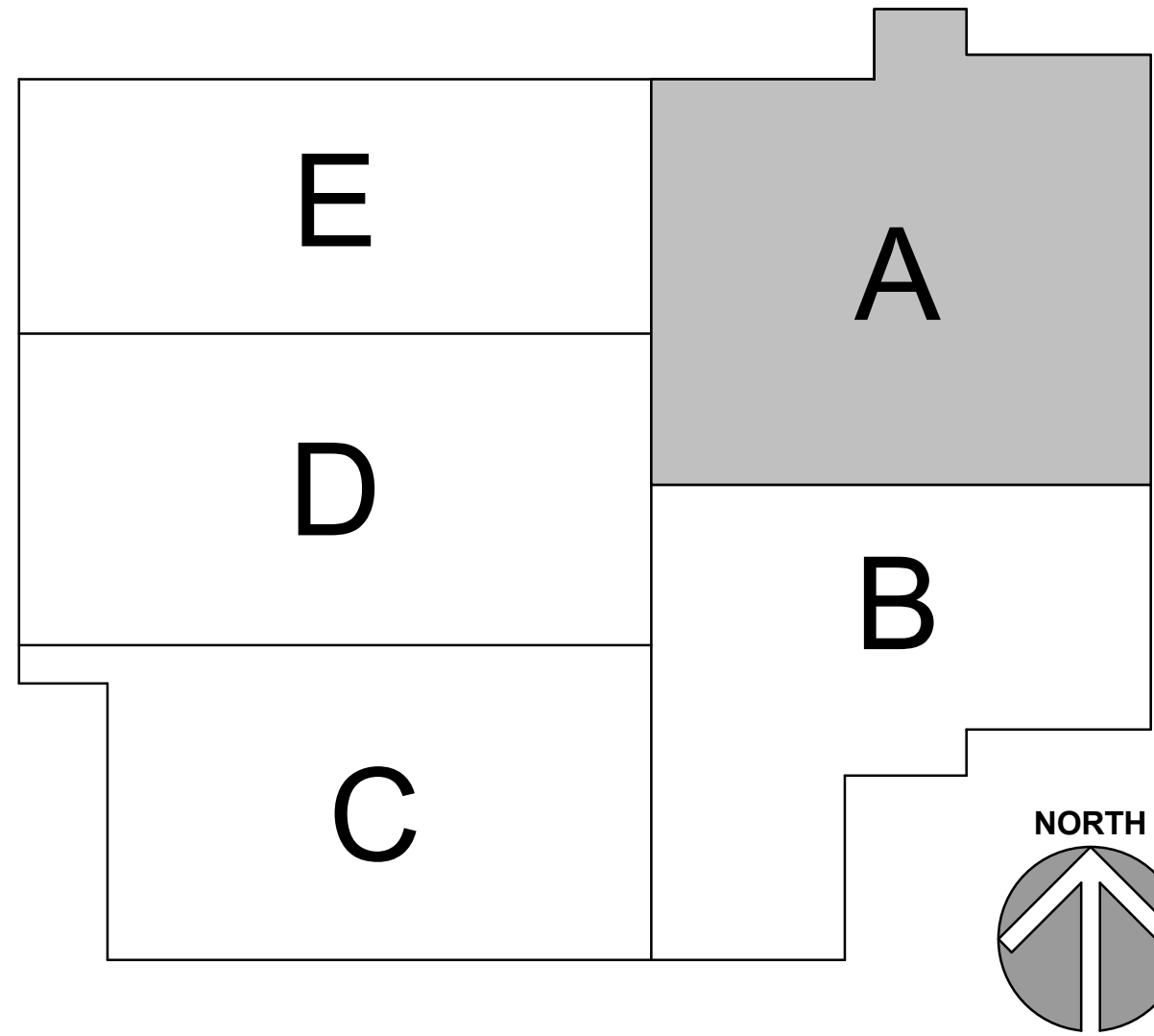
KEYNOTES ARE TYPICALLY NOT DUPLICATED WITHIN A GIVEN DETAIL. AN UN-KEYNOTED ITEM IN A DETAIL IS THE SAME AS A KEYNOTED ITEM HAVING THE SAME APPEARANCE WITHIN THE SAME DETAIL.

03.033 CAST-IN-PLACE CONCRETE: 4" HIGH HOUSEKEEPING PAD, SIZED TO ACCOMMODATE EQUIPMENT.

## GENERAL NOTES

1. REFER TO DRAWING G200 FOR PROJECT GENERAL NOTES.
2. REFER TO A850 AND A860 SERIES DRAWINGS FOR EQUIPMENT PLANS AND SCHEDULE.
3. COORDINATE FIRE RATED ASSEMBLIES INFORMATION CONTAINED ON DRAWING G300 WITH THE WORK OF ALL CONTRACTS.
4. GYPSUM WALLS ARE WALL TYPE G3a UNLESS TAGGED OTHERWISE.
5. INTERIOR MASONRY WALLS ARE WALL TYPE M8 UNLESS TAGGED OTHERWISE.
6. GYPSUM FUR OUT WALLS ARE WALL TYPE G2F UNLESS TAGGED OTHERWISE.
7. APPLY FIREPROOFING TO STRUCTURAL STEEL COLUMNS AND BEAMS SUPPORTING FIRE RESISTANCE RATED ASSEMBLIES. COORDINATE WITH FIREPROOFING SCHEDULE AND STRUCTURAL STEEL DRAWINGS.
8. IDENTIFY FIRE-RATED ASSEMBLIES WITH STENCILED PAINTED LETTERING OR VINYL APPLIED LETTERING IN CONCEALED SPACES ABOVE CEILINGS AT 30 (MAX.) INTERVALS AND NOT MORE THAN 15' FROM THE ENDS OF WALLS. REFER TO SPECIFICATION SECTION 07 05 53 - FIRE AND SMOKE ASSEMBLY IDENTIFICATION FOR ADDITIONAL INFORMATION.
9. IN METAL STUD/PLASTER BOARD PARTITIONS AND WALLS, PROVIDE 2X FIRE RETARDANT TREATED WOOD BLOCKING FOR WALL-MOUNTED ITEMS REQUIRING MECHANICAL ANCHORAGE.
10. IDENTIFY ABOVE-CEILING PLENUMS WITH STENCILED PAINTED LETTERING OR VINYL APPLIED LETTERING IN CONCEALED SPACES ABOVE CEILINGS AT 30 (MAX.) INTERVALS AND NOT MORE THAN 15' FROM THE ENDS OF WALLS ON WALLS THAT DEFINE PLENUMS. PROVIDE WORDING STATING "THIS CAVITY IS A MECHANICAL SYSTEM PLENUM. ALL COMBUSTIBLE MATERIALS MUST CONFORM TO IMC." IN WHITE LETTERING NOT LESS THAN 1/2" HIGH ON RED BACKGROUND. REFER TO SPECIFICATION SECTIONS 07 05 53 - FIRE AND SMOKE ASSEMBLY IDENTIFICATION FOR ADDITIONAL INFORMATION. REFER TO MECHANICAL DRAWINGS FOR LOCATIONS OF PLENUM CEILINGS.

## KEYPLAN



**Klubber**  
Architects + Engineers

Klubber, Inc.  
Aurora, Illinois 60006  
Tel. 630.406.1213  
Chicago, Illinois 60606  
Tel. 312.867.5070  
www.klubberinc.com

**KUENY**  
ARCHITECTS

**CITY OF AURORA PUBLIC WORKS FACILITY**

CITY OF AURORA  
44 E DOWNER PLACE  
AURORA, IL 60507

ISSUED	
10/05/22	BID AND PERMIT DOCUMENTS
1	12/16/22 PERMIT REVISIONS
2	1/17/23 DESIGN DEVELOPMENT
3	1/17/23 DESIGN DEVELOPMENT
4	12/16/23 BP2 - ADDENDUM #2
5	12/16/23 BP2 - ADDENDUM #3
6	12/16/23 AS 003
7	12/16/23 AS 003
8	10/18/23 AS 005
9	10/18/23 BP3 - BID DOCUMENTS

JOB NO.	19-130-1291
DRAWN	RES
CHECKED	JPW
APPROVED	CJH

SHEET TITLE	
FIRST FLOOR PLAN - AREA 'A' EQUIPMENT PLAN	

SHEET NUMBER	
--------------	--

**A851**



## KEYNOTES

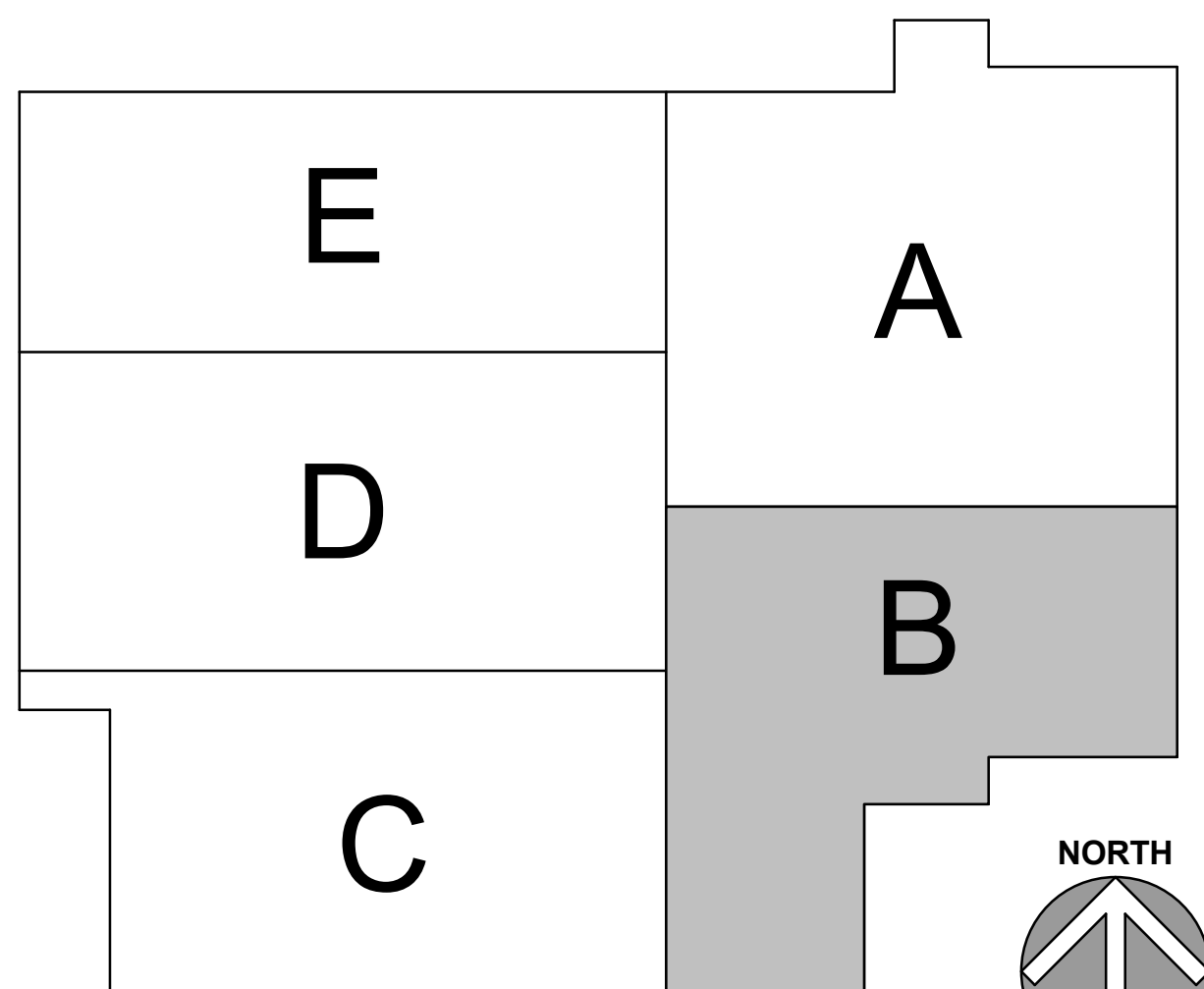
KEYNOTES ARE TYPICALLY NOT DUPLICATED WITHIN A GIVEN DETAIL. AN UN-KEYNOTED ITEM IN A DETAIL IS THE SAME AS A KEYNOTED ITEM HAVING THE SAME APPEARANCE WITHIN THE SAME DETAIL.

- 03.033 CAST-IN-PLACE CONCRETE: 4" HIGH HOUSEKEEPING PAD. SIZED TO ACCOMMODATE EQUIPMENT.  
 06.011 ROUGH CARPENTRY: PEG BOARD OVER 1" FURRING STRIPS. LENGTH PER PLANS. COORDINATE WITH ELECTRICAL AND PLUMBING WORK.  
 23.303 MECHANICAL EXHAUST HOSE REEL: REFER TO MECHANICAL DRAWINGS. TYP MOUNTING HEIGHT @ 12' AFF.  
 32.330 SITE FURNISHINGS: BOLLARD COVER. SIZED TO FIT BOLLARD; 48" HIGH FOR 4" DIA. BOLLARD OR 72" HIGH FOR 8" DIA. BOLLARD. REFER TO SPECIFICATIONS.

## GENERAL NOTES

- REFER TO DRAWING G200 FOR PROJECT GENERAL NOTES.
- REFER TO A850 AND A860 SERIES DRAWINGS FOR EQUIPMENT PLANS AND SCHEDULE.
- COORDINATE FIRE RATED ASSEMBLIES INFORMATION CONTAINED ON DRAWING G300 WITH THE WORK OF ALL CONTRACTS.
- GYPSUM WALLS ARE WALL TYPE G3a UNLESS TAGGED OTHERWISE.
- INTERIOR MASONRY WALLS ARE WALL TYPE M8 UNLESS TAGGED OTHERWISE.
- GYPSUM FUR OUT WALLS ARE WALL TYPE G2 UNLESS TAGGED OTHERWISE.
- APPLY FIREPROOFING TO STRUCTURAL STEEL COLUMNS AND BEAMS SUPPORTING FIRE RESISTANCE RATED ASSEMBLIES. COORDINATE WITH FIREPROOFING SCHEDULE AND STRUCTURAL STEEL DRAWINGS.
- IDENTIFY FIRE-RATED ASSEMBLIES WITH STENCILED PAINTED LETTERING OR VINYL APPLIED LETTERING IN CONCEALED SPACES ABOVE CEILINGS AT 30" (MAX.) INTERVALS AND NOT MORE THAN 15" FROM THE ENDS OF WALLS. REFER TO SPECIFICATION SECTION 07 05 53 - FIRE AND SMOKE ASSEMBLY IDENTIFICATION FOR ADDITIONAL INFORMATION.
- IN METAL STUD/PLUM BOARD PARTITIONS AND WALLS, PROVIDE 2X FIRE RETARDANT TREATED WOOD BLOCKING FOR WALL-MOUNTED ITEMS REQUIRING MECHANICAL ANCHORAGE.
- IDENTIFY ABOVE-CEILING PLENUMS WITH STENCILED PAINTED LETTERING OR VINYL APPLIED LETTERING IN CONCEALED SPACES ABOVE CEILINGS AT 30" (MAX.) INTERVALS AND NOT MORE THAN 15" FROM THE ENDS OF WALLS ON WALLS THAT DEFINE PLENUMS. PROVIDE WORDING STATING "THIS CAVITY IS A MECHANICAL SYSTEM PLENUM. ALL COMBUSTIBLE MATERIALS MUST CONFORM TO IMC." IN WHITE LETTERING NOT LESS THAN 1/2" HIGH ON RED BACKGROUND. REFER TO SPECIFICATION SECTIONS 07 05 53 - FIRE AND SMOKE ASSEMBLY IDENTIFICATION FOR ADDITIONAL INFORMATION. REFER TO MECHANICAL DRAWINGS FOR LOCATIONS OF PLENUM CEILINGS.

## KEYPLAN



## FIRST FLOOR PLAN - AREA 'B' - EQUIPMENT

SCALE: 1/8" = 1'-0"

1

**Kluber**  
Architects + Engineers

Kluber, Inc.  
Aurora, Illinois 60006  
Tel. 630.406.1213  
Chicago, Illinois 60606  
Tel. 312.867.5670  
www.kluberc.com

**KUENY**  
ARCHITECTS

**CITY OF AURORA PUBLIC WORKS FACILITY**

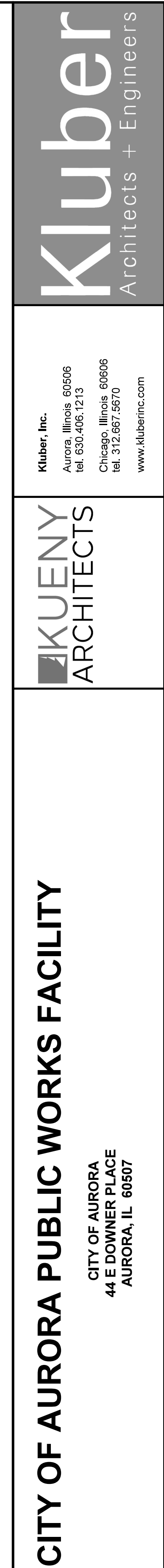
CITY OF AURORA  
44 E DOWNER PLACE  
AURORA, IL 60507

ISSUED	10/09/22	BID AND PERMIT DOCUMENTS
1	12/16/22	PERMIT REVISIONS
2	12/16/22	DESIGN DEVELOPMENT
3	12/16/22	PERMIT REVISIONS
4	12/16/22	BP2 - ADDENDUM #2
5	12/16/22	BP2 - ADDENDUM #3
6	12/16/22	AS 003
7	12/16/22	AS 003
8	12/16/22	AS 003
9	12/16/22	BP2 - BID DOCUMENTS

JOB NO.	19-130-1291
DRAWN	RES
CHECKED	JPW
APPROVED	CJH

SHEET TITLE	FIRST FLOOR PLAN - AREA 'B' EQUIPMENT PLAN
SHEET NUMBER	A852

NOTE: SCALES DEPICTED ON THIS DRAWING ARE NOT CORRECT UNLESS PLOTTED SHEET SIZE IS 30 X 42 INCHES.



--	--

## KEYPLAN

- 
- A map of the five Great Lakes, labeled A through E. Lake A is at the top right, Lake B is below it, and Lake C is at the bottom, shaded gray. Lake D is to the left of Lake B, and Lake E is to the left of Lake A. A north arrow is located in the bottom right corner, pointing upwards.

KEYNOTES ARE TYPICALLY NOT DUPLICATED WITHIN A GIVEN DETAIL.  
AN UN-KEYNOTED ITEM IN A DETAIL IS THE SAME AS A KEYNOTED  
ITEM HAVING THE SAME APPEARANCE WITHIN THE SAME DETAIL.

10/26/22 BID AND PERMIT DOCUMENTS		ISSUED	
1	12/16/22 PERMIT REVISIONS		
2	12/16/22 PERMIT REVISIONS		
3	5/10/22 ADDITIONAL PERMIT REVISIONS		
4	5/26/22 RP2 - ADDENDUM #1		
5	5/26/22 RP2 - ADDENDUM #2		
6	5/26/22 RP3 - ADDENDUM #1		
7	5/26/22 RP3 - ADDENDUM #2		
8	5/26/22 RP3 - ADDENDUM #3		
9	7/7/2022 RP3 - ADDENDUM #4		
10	7/7/2022 RP3 - ADDENDUM #5		
11	10/21/22 RP3 - BID DOCUMENTS		

JOB NO.	15-130-1291
DRAWN	RES
CHECKED	JPW
APPROVED	CJH

SHEET TITLE	
FIRST FLOOR PLAN - AREA 'C' EQUIPMENT PLAN	
SHEET NUMBER	
A853	



KEYNOTES ARE TYPICALLY NOT DUPLICATED WITHIN A GIVEN DETAIL.  
AN UN-KEYNOTED ITEM IN A DETAIL IS THE SAME AS A KEYNOTED  
ITEM HAVING THE SAME APPEARANCE WITHIN THE SAME DETAIL.

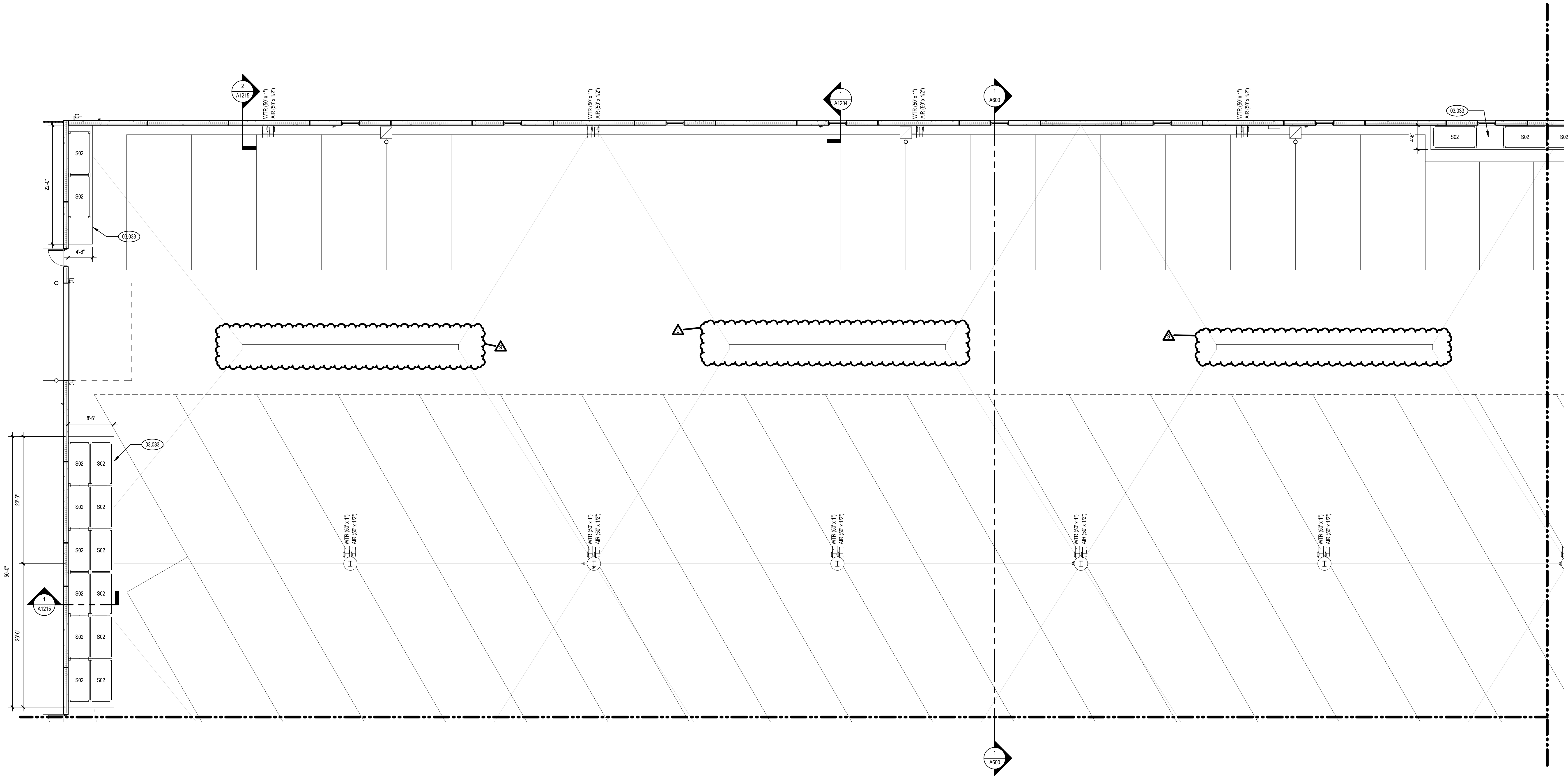
1. REFER TO DRAWING G100 FOR PROJECT GENERAL NOTES.
2. REFER TO A850 AND A860 SERIES DRAWINGS FOR EQUIPMENT PLANS AND SCHEDULE.
3. COORDINATE FIRE RATED ASSEMBLIES INFORMATION CONTAINED ON DRAWING G300 WITH THE WORK OF ALL CONTRACTS.
4. SPOT ELEVATIONS ARE DESIGNATED NORMAL HEIGHTS ABOVE FINISHED FLOOR UNLESS NOTE OTHERWISE. COORDINATE FINAL HEIGHTS OF CEILING ELEMENTS WITH INFORMATION CONTAINED ON MECHANICAL, PLUMBING, FIRE PROTECTION AND ELECTRICAL DRAWINGS.
5. PROVIDE GYPSUM BOARD HEADERS TO FORM VERTICAL SOFFITS AT CHANGES OF ACOUSTICAL CEILING HEIGHTS UNLESS NOTED OR DETAILLED OTHERWISE.

A map of the five Great Lakes is shown. The lakes are labeled A, B, C, D, and E. Lake D is shaded gray. A compass rose in the bottom right corner indicates North.

SHEET NUMBER
--------------

A854





**FIRST FLOOR PLAN - AREA 'E' - EQUIPMENT** 1  
SCALE: 1/8" = 1'-0"

**KEYNOTES**

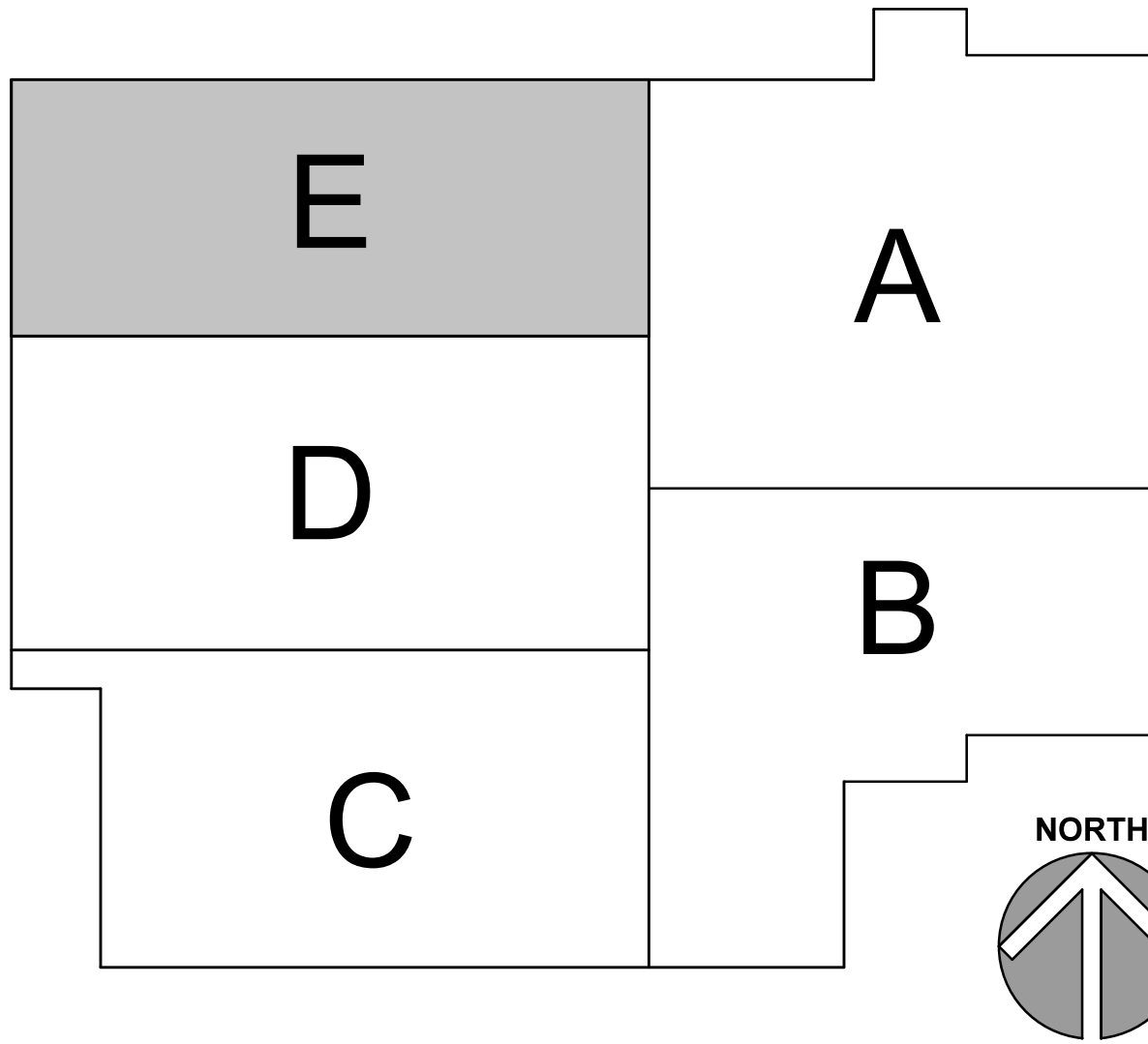
KEYNOTES ARE TYPICALLY NOT DUPLICATED WITHIN A GIVEN DETAIL.  
AN UNKEYNOTED ITEM IN A DETAIL IS THE SAME AS A KEYNOTED  
ITEM HAVING THE SAME APPEARANCE WITHIN THE SAME DETAIL.

03.033 CAST-IN-PLACE CONCRETE: 4" HIGH HOUSEKEEPING PAD, SIZED TO ACCOMMODATE EQUIPMENT.

**GENERAL NOTES**

- REFER TO DRAWING G100 FOR PROJECT GENERAL NOTES.
- REFER TO A850 AND A860 SERIES DRAWINGS FOR EQUIPMENT PLANS AND SCHEDULE.
- COORDINATE FIRE RATED ASSEMBLIES INFORMATION CONTAINED ON DRAWING G300 WITH THE WORK OF ALL CONTRACTS.
- SPOT ELEVATIONS ARE DESIGNATED NOMINAL HEIGHTS ABOVE FINISHED FLOOR UNLESS NOTED OTHERWISE. COORDINATE FINAL HEIGHTS OF CEILING ELEMENTS WITH INFORMATION CONTAINED ON MECHANICAL, PLUMBING, FIRE PROTECTION AND ELECTRICAL DRAWINGS.
- PROVIDE GYPSUM BOARD HEADERS TO FORM VERTICAL SOFFITS AT CHANGES OF ACOUSTICAL CEILING HEIGHTS UNLESS NOTED OR DETAILED OTHERWISE.

**KEYPLAN**



ISSUED	
10/03/22	BID AND PERMIT DOCUMENTS
1	12/10/22 PERMIT REVISIONS
2	12/10/22 DESIGN COORDINATION
3	12/10/22 DESIGN COORDINATION
4	12/10/22 BP2 - ADDENDUM #2
5	12/10/22 BP2 - ADDENDUM #3
6	12/10/22 BP2 - ADDENDUM #4
7	12/10/22 BP2 - ADDENDUM #5
8	12/10/22 BP2 - ADDENDUM #6
9	12/10/22 BP2 - ADDENDUM #7

JOB NO.	19-130-1291
DRAWN	RES
CHECKED	JPW
APPROVED	CJH

SHEET TITLE	
FIRST FLOOR PLAN - AREA 'E' EQUIPMENT PLAN	

SHEET NUMBER	
A855	

KEYNOTES

KEYNOTES ARE TYPICALLY NOT DUPLICATED WITHIN A GIVEN DETAIL.  
AN UNKEYNOTED ITEM IN A DETAIL IS THE SAME AS A KEYNOTED  
ITEM HAVING THE SAME APPEARANCE WITHIN THE SAME DETAIL.

**Klubber**  
Architects + Engineers

Klubber, Inc.  
Aurora, Illinois 60006  
tel. 630.406.1213  
Chicago, Illinois 60606  
tel. 312.267.5570  
www.klubberinc.com

**KUJENY**  
ARCHITECTS

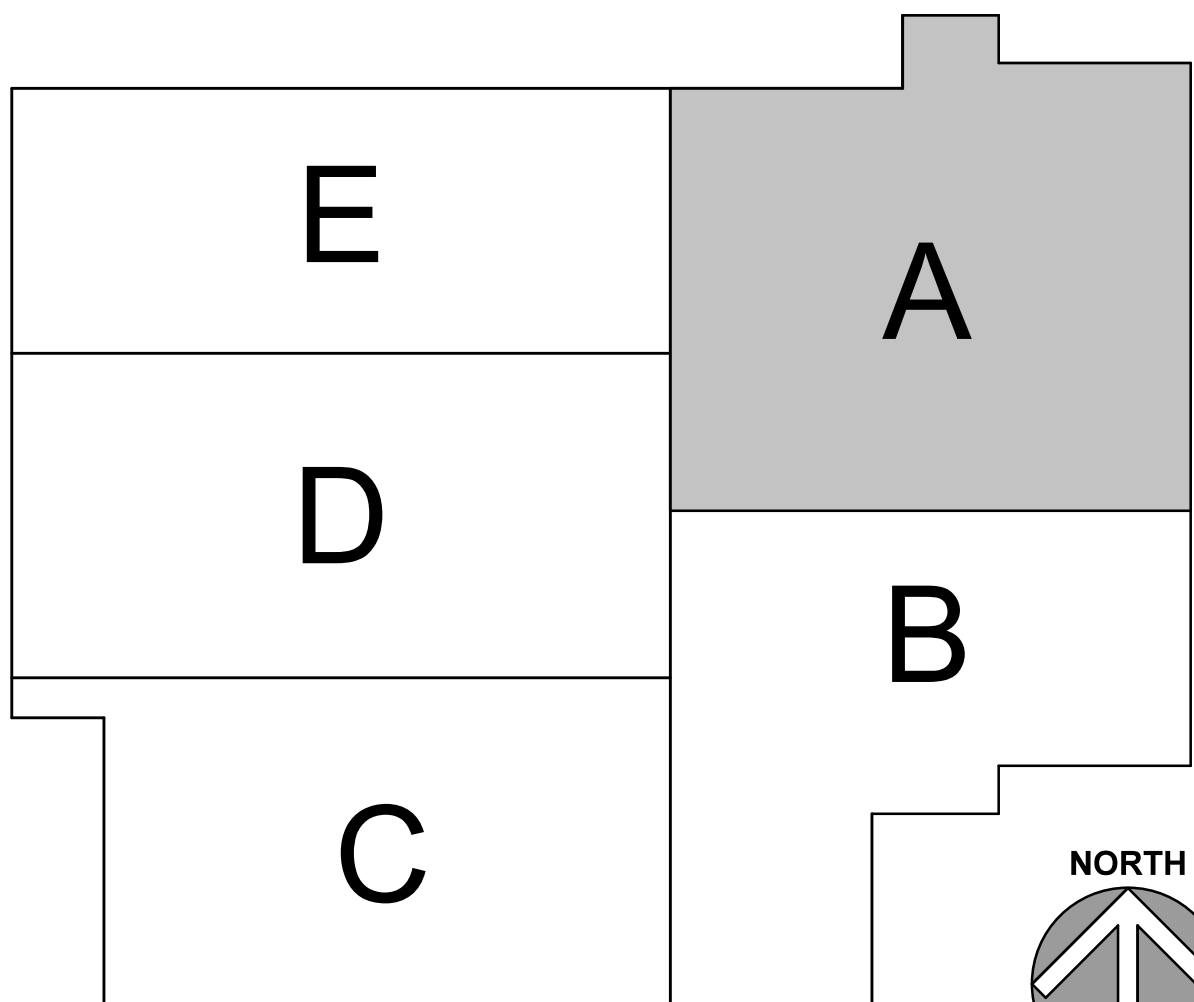
**CITY OF AURORA PUBLIC WORKS FACILITY**

CITY OF AURORA  
44 E DOWNER PLACE  
AURORA, IL 60507

GENERAL NOTES

1. REFER TO DRAWING G200 FOR PROJECT GENERAL NOTES.
2. REFER TO A860 AND A860 SERIES DRAWINGS FOR EQUIPMENT PLANS AND SCHEDULE.
3. COORDINATE FIRE RATED ASSEMBLIES INFORMATION CONTAINED ON DRAWING G300 WITH THE WORK OF ALL CONTRACTS.
4. GYPSUM WALLS ARE WALL TYPE G3a UNLESS TAGGED OTHERWISE.
5. INTERIOR MASONRY WALLS ARE WALL TYPE M8 UNLESS TAGGED OTHERWISE.
6. GYPSUM FUR OUT WALLS ARE WALL TYPE G2 UNLESS TAGGED OTHERWISE.
7. APPLY FIREPROOFING TO STRUCTURAL STEEL COLUMNS AND BEAMS SUPPORTING FIRE RESISTANCE RATED ASSEMBLIES. COORDINATE WITH FIREPROOFING SCHEDULE AND STRUCTURAL STEEL DRAWINGS.
8. IDENTIFY FIRE-RATED ASSEMBLIES WITH STENCILED PAINTED LETTERING OR VINYL APPLIED LETTERING IN CONCEALED SPACES ABOVE CEILINGS AT 30" (MAX.) INTERVALS AND NOT MORE THAN 15" FROM THE ENDS OF WALLS. REFER TO SPECIFICATION SECTION 07 05 53 - FIRE AND SMOKE ASSEMBLY IDENTIFICATION FOR ADDITIONAL INFORMATION.
9. IN METAL STUD/GYPSUM BOARD PARTITIONS AND WALLS, PROVIDE 2x FIRE RETARDANT TREATED WOOD BLOCKING FOR WALL-MOUNTED ITEMS REQUIRING MECHANICAL ANCHORAGE.
10. IDENTIFY ABOVE-CEILING PLENUMS WITH STENCILED PAINTED LETTERING OR VINYL APPLIED LETTERING IN CONCEALED SPACES ABOVE CEILINGS AT 30" (MAX.) INTERVALS AND NOT MORE THAN 15" FROM THE ENDS OF WALLS THAT DEFINE PLENUMS. PROVIDE WORDING STATING "THIS CAVITY IS A MECHANICAL SYSTEM PLENUM. ALL COMBUSTIBLE MATERIALS MUST CONFORM TO IBC." IN WHITE LETTERING NOT LESS THAN 1/2" HIGH ON RED BACKGROUND. REFER TO SPECIFICATION SECTIONS 07 05 53 - FIRE AND SMOKE ASSEMBLY IDENTIFICATION FOR ADDITIONAL INFORMATION. REFER TO MECHANICAL DRAWINGS FOR LOCATIONS OF PLENUM CEILINGS.

KEYPLAN



SECOND FLOOR PLAN - AREA 'A' - EQUIPMENT

SCALE: 1/8" = 1'-0"

1

ISSUED	
10/03/22	BID AND PERMIT DOCUMENTS
1	12/10/22 PERMIT REVISIONS
2	12/10/22 DESIGN COORDINATION
3	12/10/22 DESIGN COORDINATION
4	12/03/23 BP2 - ADDENDUM #2
5	12/10/23 BP2 - ADDENDUM #3
6	12/03/23 AS 003
7	12/03/23 AS 003
8	10/16/23 AS 005
9	10/16/23 BP2 - BID DOCUMENTS

JOB NO.	19-130-1291
DRAWN	RES
CHECKED	JPW
APPROVED	CJH

SHEET TITLE	
SECOND FLOOR - AREA 'A' EQUIPMENT PLAN	

SHEET NUMBER	
--------------	--

**A861**

KEYNOTES ARE TYPICALLY NOT DUPLICATED WITHIN A GIVEN DETAIL.  
AN UNKEYNOTED ITEM IN A DETAIL IS THE SAME AS A KEYNOTED  
ITEM HAVING THE SAME APPEARANCE WITHIN THE SAME DETAIL.

**Klubber**  
Architects + Engineers

Klubber, Inc.  
Aurora, Illinois 60006  
tel. 630.406.1213  
Chicago, Illinois 60606  
tel. 312.567.5570  
www.klubberinc.com

**KUJENY**  
ARCHITECTS

**CITY OF AURORA PUBLIC WORKS FACILITY**

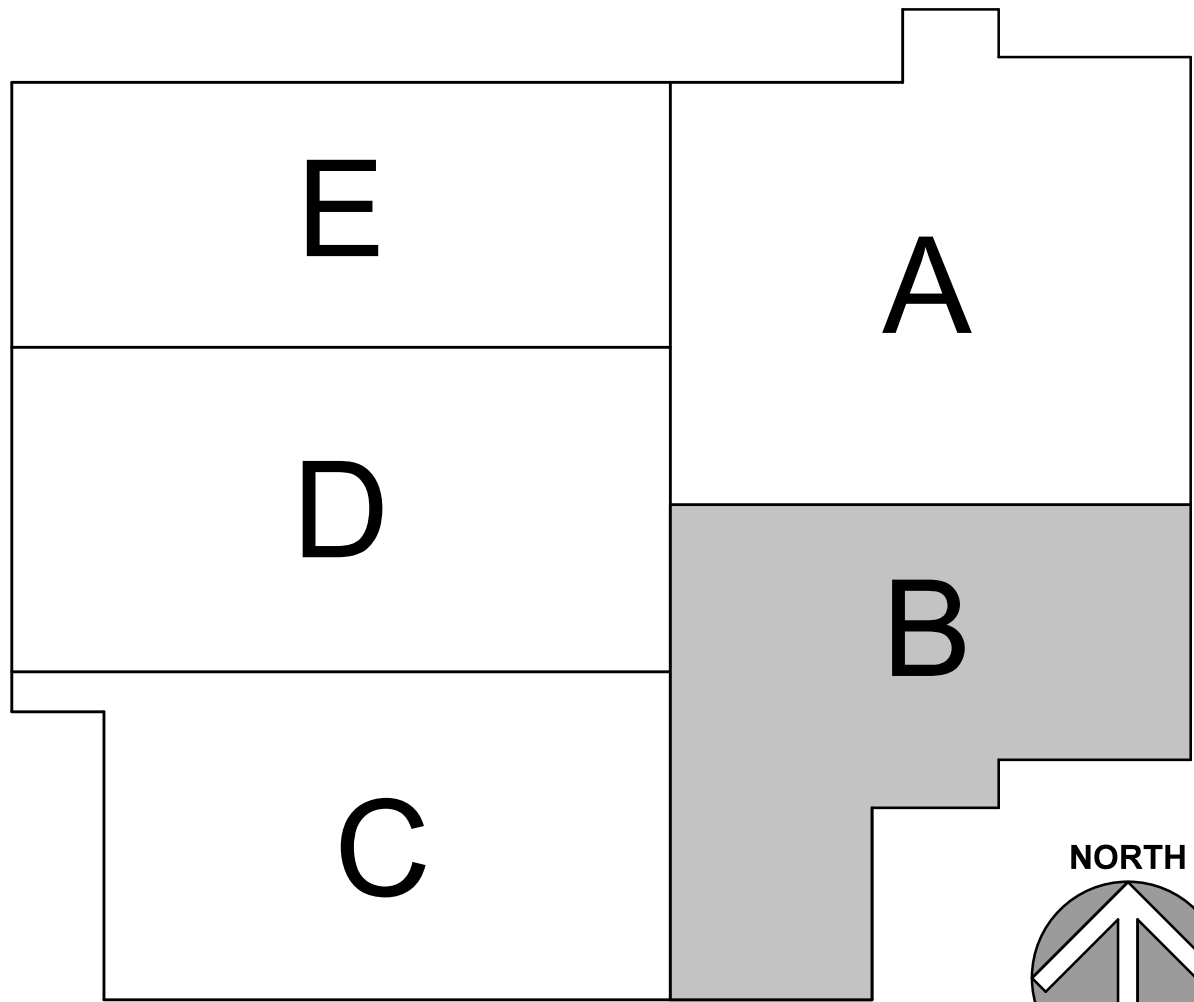
CITY OF AURORA  
44 E DOWNER PLACE  
AURORA, IL 60507

KEYNOTES

GENERAL NOTES

1. REFER TO DRAWING G200 FOR PROJECT GENERAL NOTES.
2. REFER TO A860 AND A860 SERIES DRAWINGS FOR EQUIPMENT PLANS AND SCHEDULE.
3. COORDINATE FIRE RATED ASSEMBLIES INFORMATION CONTAINED ON DRAWING G300 WITH THE WORK OF ALL CONTRACTS.
4. GYPSUM WALLS ARE WALL TYPE G3a UNLESS TAGGED OTHERWISE.
5. INTERIOR MASONRY WALLS ARE WALL TYPE M8 UNLESS TAGGED OTHERWISE.
6. GYPSUM FUR OUT WALLS ARE WALL TYPE G2 UNLESS TAGGED OTHERWISE.
7. APPLY FIREPROOFING TO STRUCTURAL STEEL COLUMNS AND BEAMS SUPPORTING FIRE RESISTANCE RATED ASSEMBLIES. COORDINATE WITH FIREPROOFING SCHEDULE AND STRUCTURAL STEEL DRAWINGS.
8. IDENTIFY FIRE-RATED ASSEMBLIES WITH STENCILED PAINTED LETTERING OR VINYL APPLIED LETTERING IN CONCEALED SPACES ABOVE CEILINGS AT 30" (MAX.) INTERVALS AND NOT MORE THAN 15" FROM THE ENDS OF WALLS. REFER TO SPECIFICATION SECTION 07 05 53 - FIRE AND SMOKE ASSEMBLY IDENTIFICATION FOR ADDITIONAL INFORMATION.
9. IN METAL STUD/GYPSUM BOARD PARTITIONS AND WALLS, PROVIDE 2X FIRE RETARDANT TREATED WOOD BLOCKING FOR WALL-MOUNTED ITEMS REQUIRING MECHANICAL ANCHORAGE.
10. IDENTIFY ABOVE-CEILING PLENUMS WITH STENCILED PAINTED LETTERING OR VINYL APPLIED LETTERING IN CONCEALED SPACES ABOVE CEILINGS AT 30" (MAX.) INTERVALS AND NOT MORE THAN 15" FROM THE ENDS OF WALLS ON WALLS THAT DEFINE PLENUMS. PROVIDE WORDING STATING "THIS CAVITY IS A MECHANICAL SYSTEM PLENUM. ALL COMBUSTIBLE MATERIALS MUST CONFORM TO IMC." IN WHITE LETTERING NOT LESS THAN 1/2" HIGH ON RED BACKGROUND. REFER TO SPECIFICATION SECTIONS 07 05 53 - FIRE AND SMOKE ASSEMBLY IDENTIFICATION FOR ADDITIONAL INFORMATION. REFER TO MECHANICAL DRAWINGS FOR LOCATIONS OF PLENUM CEILINGS.

KEYPLAN



SECOND FLOOR PLAN - AREA 'B' - EQUIPMENT

SCALE: 1/8" = 1'-0"

1

NOTE: SCALES DEPICTED ON THIS DRAWING ARE NOT CORRECT UNLESS PLOTTED SHEET SIZE IS 30 X 42 INCHES.

ISSUED	
10/03/22	IBD AND PERMIT DOCUMENTS
1	12/10/22 PERMIT REVISIONS
2	12/10/22 DESIGN COORDINATION
3	12/10/22 PERMIT REVISIONS
4	12/03/23 IBP2 - ADDENDUM #2
5	12/01/23 IBP2 - ADDENDUM #3
6	12/01/23 IBP2 - ADDENDUM #4
7	12/01/23 IBP2 - ADDENDUM #5
8	10/13/23 IBP2 - IBD DOCUMENTS

JOB NO.	19-130-1291
DRAWN	RES
CHECKED	JPW
APPROVED	CJH

SHEET TITLE	
SECOND FLOOR - AREA 'B' EQUIPMENT PLAN	

SHEET NUMBER
--------------

**A862**