

**SECTION 00 91 01
ADDENDUM NUMBER 1**

DATE: **AUGUST 12, 2021**

PROJECT: **CITY OF AURORA - WILDER PARK PROMENADE PAVILION FACILITY
350 N. RIVER STREET
AURORA, ILLINOIS 60506**

PROJECT NO: **19-130-1277**

OWNER: **CITY OF AURORA
44 EAST DOWNER PLACE
AURORA, ILLINOIS 60507**

TO: **PROSPECTIVE BIDDERS / PLANHOLDERS OF RECORD**

This Addendum forms a part of the Contract Documents and modifies the Bidding Documents dated July 30, 2021, with amendments and additions noted below. Acknowledge receipt of this Addendum in the space provided in the Bid Form. Failure to do so may subject the Bidder to disqualification.

This Addendum consists of fifteen (15) pages, Specification Sections 00 01 10, 07 46 23, 08 31 00 & 10 14 00, and Drawings A310, A700 and A1200.

CONTRACTOR QUESTIONS

**1.01 Will the building pad be cut to subgrade (by others) and ready for foundation excavation?
Confirm our excavation scope is foundation excavation and stone for pad only?**

A. Confirmed.

1.02 Is a 662/663 available for use , in order to haul off and dispose of foundation spoils?

A. All spoils will remain on-site. Contractor will need to coordinate with owner on locations to respread the spoils.

CHANGES TO SPECIFICATIONS

2.01 SECTION 00 01 10 - TABLE OF CONTENTS

A. Delete this section and replace with revised section 00 01 10 (attached). Section 08 31 00 added to table to contents. Revisions in Bold.

2.02 SECTION 07 46 23 - WOOD SIDING

A. Delete this section and replace with revised section 07 46 23 (attached). Revisions in Bold.

2.03 SECTION 08 31 00 - ACCESS DOORS AND PANELS

A. Add new section 08 31 00 (attached) to the set.

2.04 SECTION 10 14 00 - SIGNAGE

A. Delete this section and replace with revised section 10 14 00 (attached). Revisions in Bold.

CHANGES TO THE DRAWINGS

3.01 DRAWING A310 - FLOOR PLAN & REFLECTED CEILING PLAN

A. Delete this Drawing and replace with revised Drawing A310 (attached). Refer to revision cloud 1.

3.02 DRAWING A700 - EXTERIOR ELEVATIONS

A. Delete this Drawing and replace with revised Drawing A700 (attached). Refer to revision cloud 1.

3.03 DRAWING A1200 - WALL SECTION & DETAILS

A. Delete this Drawing and replace with revised Drawing A1200 (attached). Refer to revision cloud 1.

END OF DOCUMENT

**SECTION 00 01 10
TABLE OF CONTENTS**

PROCUREMENT AND CONTRACTING REQUIREMENTS		PAGES
Introductory Information		
00 01 01	Project Title Page	00 01 00-1-1
00 01 10	Table of Contents	00 01 10-1-3
00 01 15	Drawing Index	00 01 15-1-1
Bidding Requirements		
00 11 13	Advertisement for Bids (2 page attachment)	00 11 13-1-3
00 21 13	Instructions to Bidders (14 page attachment)	00 21 13-1-15
00 31 13	Preliminary Schedule	00 31 13-1-1
00 41 13	Bid Form - Stipulated Sum	00 41 13-1-3
00 43 13	Bid Security Form	00 43 13-1-1
00 43 14	Bid Form Supplement - Bidder's Certification (1 page attachment)	00 43 14-1-2
00 43 15	Bid Form Supplement - Bidder's Tax Certification (1 page attachment)	00 43 15-1-2
00 43 16	Bid Form Supplement - Apprenticeship or Training Program Certification and Current Signatory Letters (2 page attachment)	00 43 16-1-3
Contracting Requirements		
00 52 00	Agreement Form (8 page attachment)	00 52 00-1-9
00 60 00	Project Forms	00 60 00-1-1
00 72 00	General Conditions	00 72 00-1-1
00 73 00	Supplementary Conditions	00 73 00-1-12
00 73 40	Labor and Wage Requirements	00 73 40-1-2
SPECIFICATIONS		PAGES
Division 01 -- General Requirements		
01 10 00	Summary	01 10 00-1-1
01 20 00	Price and Payment Procedures	01 20 00-1-4
01 21 00	Allowances	01 21 00-1-1
01 30 00	Administrative Requirements (1 page attachment)	01 30 00-1-9
01 40 00	Quality Requirements	01 40-00-1-5

01 41 00	Regulatory Requirements	01 41 00-1-2
01 42 00	References	01 42 00-1-5
01 50 00	Temporary Facilities and Controls	01 50 00-1-2
01 60 00	Product Requirements (1 page attachment)	01 60 00-1-5
01 61 16	Volatile Organic Compound (VOC) Content Restrictions	01 61 16-1-2
01 70 00	Execution and Closeout Requirements	01 70 00-1-6
01 77 00	Closeout Procedures	01 77 00-1-2
01 78 00	Closeout Submittals	01 78 00-1-4
Division 03 -- Concrete		
03 10 00	Concrete Forming and Accessories	03 10 00-1-3
03 20 00	Concrete Reinforcing	03 20 00-1-2
03 30 00	Cast-in-Place Concrete	03 30 00-1-8
Division 05 -- Metals		
05 12 00	Structural Steel Framing	05 12 00-1-
Division 06 -- Wood, Plastics, and Composites		
06 10 00	Rough Carpentry	06 10 00-1-6
Division 07 -- Thermal and Moisture Protection		
07 25 00	Weather Barriers	07 25 00-1-3
07 46 23	Wood Siding	07 46 23-1-
07 46 46	Fiber Cement Siding	07 46 46-1-3
07 53 00	Elastomeric Membrane Roofing	07 53 00-1-8
07 62 00	Sheet Metal Flashing and Trim	07 62 00-1-3
07 92 00	Joint Sealants	07 92 00-1-6
Division 08 -- Openings		
08 31 00	Access Doors and Panels [Addendum No. 1]	08 31 00-1-2
Division 09 -- Finishes		
09 91 13	Painting	09 91 13-1-5
Division 10 -- Specialties		
10 14 00	Signage	10 14 00-1-2
Division 31 -- Earthwork		
31 23 16	Excavation	31 23 16-1-2

31 23 23 Fill

31 23 23-1-3

Division 33 -- Utilities

33 41 00 - Subdrainage

33 41 00-1-2

END OF SECTION

SECTION 07 46 23
WOOD SIDING

PART 1 GENERAL

1.01 SECTION INCLUDES

- A. Board siding for rainscreen walls with batten strips.
- B. Fasteners.

1.02 RELATED REQUIREMENTS

- A. Section 05 40 00 - Cold-Formed Metal Framing: Water-resistive barrier under siding.
- B. Section 06 10 00 - Rough Carpentry: Siding substrate battens.
- C. Section 07 25 00 - Weather Barriers: Water-resistive barrier under siding.
- D. Section 07 62 00 - Sheet Metal Flashing and Trim: Product requirements for metal flashings and trim associated with wood siding for placement by this section.
- E. Section 09 91 13 - Painting: Prime and finish painting.

1.03 SUBMITTALS

- A. See Section 01 30 00 - Administrative Requirements for submittal procedures.
- B. Product Data: Provide manufacturer's data on materials, fastening methods, jointing details, sizes, surface texture, finishes, and accessories; showing compliance with requirements, including:
 - 1. Physical characteristics of components shown on shop drawings.
 - 2. Storage and handling requirements and recommendations.
 - 3. Installation instructions and recommendations.
- C. Shop Drawings: Indicate dimensions, layout, joints, construction details, support clips, and methods of anchorage.
- D. Samples: Submit two samples 12 inches in length illustrating surface texture and applied finish color.
- E. Installer's qualification statement.

1.04 QUALITY ASSURANCE

- A. Installer Qualifications: Company specializing in installing products of the type specified in this section with minimum five years of documented experience.

1.05 DELIVERY, STORAGE, AND HANDLING

- A. Store in ventilated areas with constant minimum temperature of 60 degrees F and maximum relative humidity of 55 percent.

PART 2 PRODUCTS

2.01 MANUFACTURER

- A. Wood Siding:

1. **Woodtone; RealTrim Treated:** <https://woodtone.com/product/realwood/realtrim-treated>.
[Addendum No. 1]

2.02 SIDING

- A. Board Rainscreen Siding: Flat, maximum moisture content of 10 percent.
 1. Size: 1x4 nominal board; 11/16 inch thick (actual), 3-1/2 inch high (actual). [Addendum No. 1]
 2. Surface Texture: Sanded smooth.
 3. Preservative Treatment: **Manufacturer's proprietary process.** [Addendum No. 1]

2.03 ACCESSORIES

- A. Screws: #8 deck screws; 2 inches long; flat head; square recess type; 18-8 stainless steel.
- B. **Flashing: Stainless steel; see Section 07 62 0007 62 00.** [Addendum No. 1]

PART 3 EXECUTION

3.01 EXAMINATION

- A. Verify that substrates are ready to receive work.
- B. Verify that water-resistive barrier has been correctly and completely installed over substrate; see Section 05 40 00.
- C. Verify battens have been installed at correct locations and site pre-finishing of batten strips is complete and dry.
- D. Do not begin until unacceptable conditions have been corrected.
- E. If substrate preparation is the responsibility of another installer, notify Architect/Engineer of unsatisfactory preparation before proceeding.

3.02 PREPARATION

- A. Do not install materials until site pre-finishing of boards is complete and dry.

3.03 INSTALLATION

- A. Fasten siding boards in place, level and plumb.
 1. Arrange for neat, aligned, orderly screw pattern, as indicated on the Drawings.
 2. Pilot and countersink screw holes.
 3. Position cut ends over bearing surfaces, and sand cut edges smooth and clean.
- B. **Install board siding horizontally, with boards spaced at 4 inches on center, vertically, making longitudinal gaps between boards uniform.** [Addendum No. 1]
 1. Screw at 16 inches on center, **2 screws 2 inches apart, vertically,** at each location, and align pairs of screws vertically with each other and from board to board. [Addendum No. 1]
 2. Butt horizontal joints tight, and butt external and internal corners. Alternate lap of corner butt joints between adjacent siding board courses.
- C. Touch-up, repair, or replace wood siding materials having damaged finish; notify Architect/Engineer of damaged materials, and confirm acceptable process prior to completion of this work.

3.04 TOLERANCES

- A. Maximum Variation From Plumb and Level: 1/8 inch per 10 feet.
- B. Maximum Offset From Joint Alignment: 1/32 inch.

END OF SECTION 07 46 23

**SECTION 08 31 00
ACCESS DOORS AND PANELS**

PART 1 GENERAL

1.01 SECTION INCLUDES

- A. Ceiling mounted access units.

1.02 RELATED REQUIREMENTS

- A. Section 07 46 46 - Fiber Cement Siding: Openings in ceilings.
- B. Section 09 91 13 - Painting: Field paint finish.

1.03 SUBMITTALS

- A. See Section 01 30 00 - Administrative Requirements, for submittal procedures.
- B. Product Data: Provide sizes, types, finishes, hardware, scheduled locations, and details of adjoining work.
- C. Shop Drawings: Indicate exact position of each access door and/or panel unit.
- D. Manufacturer's Installation Instructions: Indicate installation requirements.
- E. Project Record Documents: Record actual locations of each access unit.

PART 2 PRODUCTS

2.01 ACCESS DOORS AND PANELS ASSEMBLIES

- A. Exterior Soffit-Mounted Units:
 - 1. Location: As indicated on drawings.
 - 2. Panel Material: Steel, hot-dipped zinc, or zinc-aluminum-alloy coated.
 - 3. Size: 14 by 14 inches.
 - 4. Door/Panel: Hinged, standard duty, with tool-operated spring or cam lock and no handle.

2.02 CEILING MOUNTED ACCESS UNITS

- A. Manufacturers:
 - 1. ACUDOR Products Inc; #UF-5000 Universal Flush Access Door: www.acudor.com.
 - 2. Best Access Doors; #BA-AHD Series General Purpose Door: www.bestaccessdoors.com.
 - 3. Cendrex, Inc; #AHD-90-110 Flush Universal Access Door with Exposed Flange: www.cendrex.com.
- B. Ceiling Mounted Units: Factory fabricated door and frame, fully assembled units with corner joints welded, filled and ground flush; square and without rack or warp; coordinate requirements with type of installation assembly being used for each unit.
 - 1. Style: Exposed frame with door surface flush with frame surface.
 - 2. Door Style: Single thickness with rolled or turned in edges.
 - 3. Frames: 16 gauge, 0.0598 inch, minimum thickness.
 - 4. Single Steel Sheet Door Panels: 16 gauge, 0.0598 inch, minimum thickness.
 - 5. Steel Finish: Primed.

6. Primed and Factory Finish: Polyester powder coat; color white.
7. Hardware:
 - a. Hinges for Non-Fire-Rated Units: Concealed, constant force closure spring type.
 - b. Latch/Lock: Tamperproof tool-operated cam latch.
 - c. Number of Locks/Latches Required: As recommended by manufacturer for size of unit.

PART 3 EXECUTION

3.01 EXAMINATION

- A. Verify that rough openings are correctly sized and located.
- B. Begin installation only after substrates have been properly prepared, and if the responsibility of another installer, notify Architect of unsatisfactory preparation before proceeding.

3.02 PREPARATION

- A. Clean surfaces thoroughly prior to proceeding with this work.
- B. Prepare surfaces using methods recommended by manufacturer for applicable substrates in accordance with project conditions.

3.03 INSTALLATION

- A. Install units in accordance with manufacturer's instructions.
- B. Install frames plumb and level in openings, and secure units rigidly in place.
- C. Position units to provide convenient access to concealed equipment when necessary.

END OF SECTION 08 31 00

SECTION 10 14 00 SIGNAGE

PART 1 GENERAL

1.01 SECTION INCLUDES

- A. Building identification signs.

1.02 SUBMITTALS

- A. See Section 01 30 00 - Administrative Requirements, for submittal procedures.
- B. Product Data: Manufacturer's printed product literature for each type of sign, indicating sign styles, font, foreground and background colors, locations, overall dimensions of each sign.
- C. Samples: Submit two samples of each type of sign, of size similar to that required for project, illustrating sign style, font, and method of attachment.
- D. ***Shop Drawings: Indicate layout of dimensional lettering and location(s) of connection(s) to source(s) of power. [Addendum No. 1]***

1.03 DELIVERY, STORAGE, AND HANDLING

- A. Package signs as required to prevent damage before installation.

PART 2 PRODUCTS

2.01 MANUFACTURERS

- A. Dimensional Letter Signs:
 - 1. ***[Deleted. Addendum No. 1]***
 - 2. Gemini Signage; ***Halo Lit Fabricated Aluminum Sign Letters: [Addendum No. 1]***
www.geminimade.com/signage.
 - 3. Substitutions: See Section 01 60 00 - Product Requirements.

2.02 SIGNAGE APPLICATIONS

- A. Building Identification Signs:
 - 1. Use individual metal dimensional letters.
 - 2. Mount on outside wall in location indicated on the Drawings.

2.03 DIMENSIONAL LETTERS

- A. Metal Letters:
 - 1. ***Metal: Aluminum sheet, fabricated reverse channel, halo lit.***
 - 2. ***Return Depth: 2 inch minimum. [Addendum No. 1]***
 - 3. Letter Height: 16 inches.
 - 4. Text and Typeface:
 - a. Character Font: Match character font of dimensional letter sign at RiverEdge Park.
 - b. Character Case: Upper case only.
 - 5. Finish: Match color and sheen of dimensional letter sign at RiverEdge Park.
 - 6. ***LED Color: Match color of dimensional letter sign at RiverEdge Park.***
 - 7. ***Letter Back Type: Light diffused Lexan.***

8. ***Mounting: Detachable studs (no visible return screws).***
9. ***Electrical Connection: Provide connection(s) of signage power supplies to Owner-provided line voltage power source(s). [Addendum No. 1]***

2.04 ACCESSORIES

- A. Concealed Screws: Stainless steel, galvanized steel, chrome plated, or other non-corroding metal.

PART 3 EXECUTION

3.01 EXAMINATION

- A. Verify that substrate surfaces are ready to receive work.
- B. ***Verify source(s) of power is (are) present and correctly located. [Addendum No. 1]***

3.02 INSTALLATION

- A. Install in accordance with manufacturer's instructions.
- B. Install neatly, with horizontal edges level.
- C. ***Make final electrical connection(s) to source(s) of power.***
- D. Protect from damage until Date of Substantial Completion; repair or replace damaged items.

END OF SECTION 10 14 00

KEYNOTES

KEYNOTES ARE TYPICALLY NOT DUPLICATED WITHIN A GIVEN DETAIL. AN UN-KEYNOTED ITEM IN A DETAIL IS THE SAME AS A KEYNOTED ITEM HAVING THE SAME APPEARANCE WITHIN THE SAME DETAIL.

- 2.030 EXISTING CAST-IN-PLACE CONCRETE; EARTH-RETAINING WALL.
- 5.501 METAL FABRICATION: STEEL TUBE COLUMN; REFER TO STRUCTURAL DRAWINGS.
- 7.464 FIBER CEMENT SIDING PANELS: USED FOR CEILING/SOFFIT SURFACE; REFER TO SPECIFICATIONS.
- 7.627 METAL DOWNSPOUT ACCESSORY: CAST IRON DOWNSPOUT BOOT; CONNECT & SEAL TO SUBDRAINAGE PIP HUB AND DOWNSPOUT.
- 7.632 METAL DOWNSPOUT: PRE-FINISHED COLOR WHITE; MATERIAL, THICKNESS AND FINISH AS SPECIFIED.
- 7.929 JOINT SEALANT ASSEMBLY: PROVIDE 1/8" GAP BETWEEN FIBER CEMENT SIDING/TRIM/SOFFIT AND ADJACENT SURFACE AND FILL GAP WITH BACKER ROD AND POLYURETHANE JOINT SEALANT; COLOR TO MATCH ADJACENT FIBER CEMENT COMPONENT, TYPICAL.
- 8.311 ACCESS DOOR: 14"x14"; REFER TO SPECIFICATIONS.
- 9.912 PAINT EXPOSED SURFACES OF COLUMNS.
- 33.411 SUBDRAINAGE: 4" UNPERFORATED HDPE PIPING WITH HUB RECEPTOR FOR DOWNSPOUT; TERMINATE 15 TO 20 FEET OUT FROM DOWNSPOUT CONNECTION USING POP UP DRAIN EMITTER; LAY TOP OF PIPING MINIMUM 6" BELOW FINISH GRADE AND SLOPE FOR ADEQUATE DRAINAGE.

Kluber, Inc.
Baltimore, Illinois 60510
Tel. 630.406.2413
Chicago, Illinois 60606
Tel. 312.867.5970
www.klubertnc.com

WILDER PARK PROMENADE - PAVILION FACILITY

CITY OF AURORA
350 N. RIVER STREET
AURORA, IL 60506

Kluber
Architects + Engineers

REFLECTED CEILING PLAN

SCALE: 1/4" = 1'-0"

1

CEILING SYMBOL LEGEND

SYMBOL	DESCRIPTION	SYMBOL	DESCRIPTION
	FIBER CEMENT SIDING CEILING PANELS		
	ACCESS DOOR: 14"x14"		

GENERAL NOTES

- REFER TO DRAWING G100 FOR PROJECT GENERAL NOTES.
- SPOT ELEVATIONS ARE DESIGNATED NOMINAL HEIGHTS ABOVE FINISHED FLOOR UNLESS NOTED OTHERWISE.
- WHERE THE WORDS "MATCH EXISTING" ARE USED IN DRAWINGS/PROJECT MANUAL, INTENT IS TO MATCH EXISTING APPEARANCE, MATERIALS AND ASSEMBLIES USED @ RIVEREDGE PARK (360 N. BROADWAY, AURORA, IL 60505).

ISSUED	DESCRIPTION	DATE
1	19-130-1277	06/12/2021

JOB NO. 19-130-1277
DRAWN PJT
CHECKED CDH
APPROVED CDH

SHEET TITLE
FLOOR PLAN & REFLECTED CEILING PLAN

SHEET NUMBER

A310

FLOOR PLAN

SCALE: 1/4" = 1'-0"

1

KEYNOTES

KEYNOTES ARE NOT ALWAYS REPEATED ACROSS ALL DRAWINGS ON THIS SHEET. AN UN-KEYNOTED ITEM ON THIS SHEET IS THE SAME AS A KEYNOTED ITEM ON THIS SHEET HAVING THE SAME GRAPHIC APPEARANCE.

- 2.030 EXISTING CAST-IN-PLACE CONCRETE; EARTH-RETAINING WALL.
2.035 EXISTING VINYL-COATED CHAIN LINK FENCING TO REMAIN.
- 5.501 METAL FABRICATION: STEEL TUBE COLUMN; REFER TO STRUCTURAL DRAWINGS.
- 6.202 ROUGH CARPENTRY: DIMENSIONAL LUMBER; 2X6 VERTICAL BATTENS @ 16" O.C.; FIELD PAINT BATTENS PRIOR TO INSTALLATION.
- 7.460 WOOD SIDING: BOARD RAINSCREEN SIDING; 1X4 (NOM.); 4" O.C. SPACING TO MATCH EXISTING; FIELD STAIN SIDING BOARDS PRIOR TO INSTALLATION; REFER TO SPECIFICATIONS.
7.464 FIBER CEMENT SIDING PANELS: USED FOR GELING/SOFTT SURFACE; REFER TO SPECIFICATIONS.
7.620 METAL COPING FLASHING: THICKNESS AND FINISH AS SPECIFIED.
7.626 SCUPPER THROUGH WALL: 6"W X 8"H; SCUPPER BOX, CONDUCTOR HEAD AND FIRST DOWNSPOUT LEG PRE-FINISHED IN COLOR TO MATCH WOOD SIDING; CONSTRUCT IN ACCORDANCE WITH SMACNA ARCHITECTURAL SHEET METAL MANUAL FIGURE 1-27A.
7.627 METAL DOWNSPOUT ACCESSORY: CAST IRON DOWNSPOUT BOOT; CONNECT & SEAL TO SUBDRAINAGE PIP HUB AND DOWNSPOUT.
7.632 METAL DOWNSPOUT: PRE-FINISHED COLOR WHITE; MATERIAL, THICKNESS AND FINISH AS SPECIFIED.
- 9.912 PAINT EXPOSED SURFACES OF COLUMNS.
- 10.146 SIGNAGE: DIMENSIONAL LETTERING W/ BACKLIT LIGHTING; SURFACE-MOUNTED TO MATCH EXISTING; CONNECT TO JUNCTION BOX PROVIDED BY THE CITY.

Kluber, Inc.
Baltimore, Illinois 60510
Tel. 630.406.2413
Chicago, Illinois 60606
Tel. 312.667.5970
www.klubereinc.com

WILDER PARK PROMENADE - PAVILION FACILITY

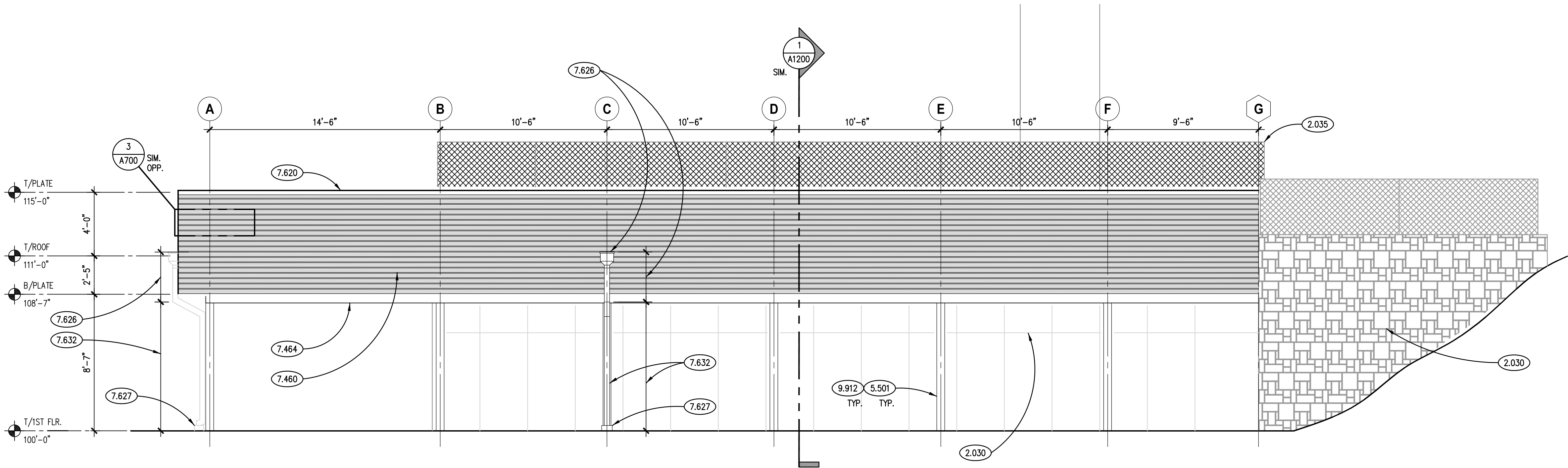
CITY OF AURORA
350 N. RIVER STREET
AURORA, IL 60506

Kluber
Architects + Engineers

TYPICAL RAINSCREEN SIDING ATTACHMENT DETAIL

SCALE: 3" = 1'-0"

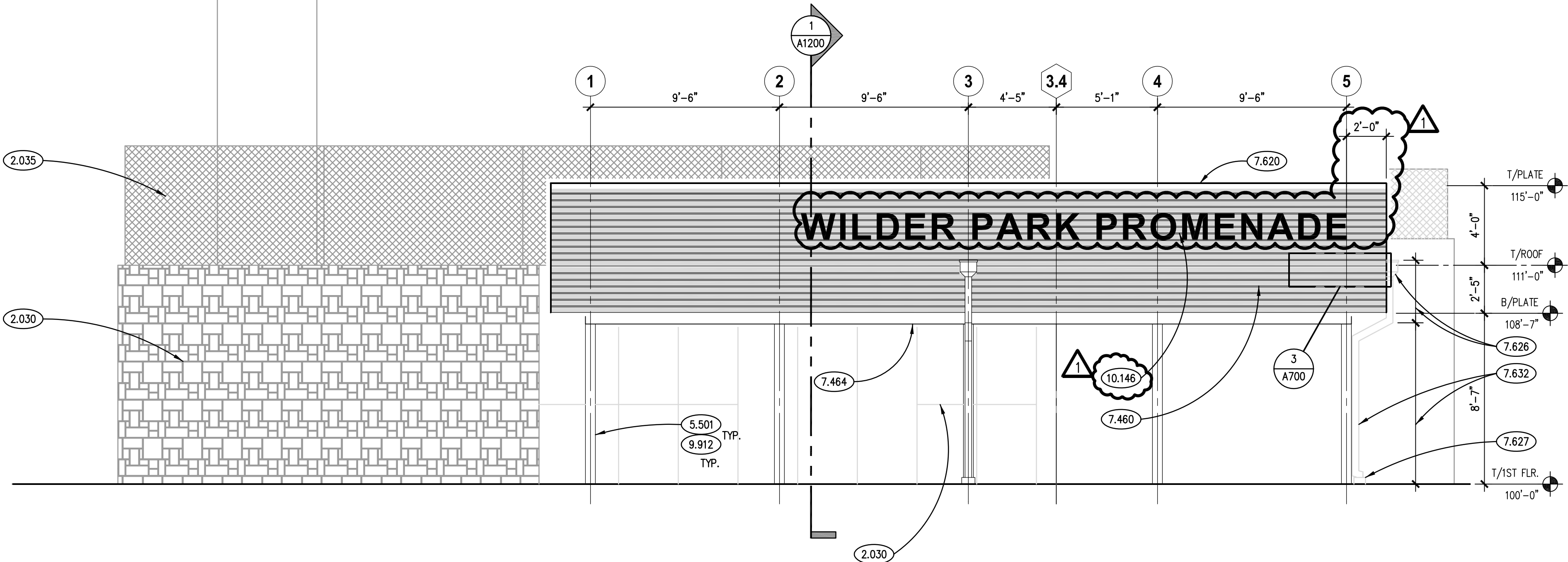
3



NORTH ELEVATION

SCALE: 1/4" = 1'-0"

2



EAST ELEVATION

SCALE: 1/4" = 1'-0"

1

GENERAL NOTES

1. REFER TO DRAWING G100 FOR PROJECT GENERAL NOTES.
2. WHERE THE WORDS "MATCH EXISTING" ARE USED IN DRAWINGS/PROJECT MANUAL, INTENT IS TO MATCH EXISTING APPEARANCE, MATERIALS AND ASSEMBLIES USED @ RIVEREDGE PARK (360 N. BROADWAY, AURORA, IL 60505).

ISSUED	DESCRIPTION	DATE
1	19-130-1277	06/17/2021

JOB NO. 19-130-1277
DRAWN PJT
CHECKED CDH
APPROVED CDH

SHEET TITLE

EXTERIOR ELEVATIONS

SHEET NUMBER

A700



2.300 EXISTING CAST-IN-PLACE CONCRETE; EARTH-RETAINING WALL.

3.031 CAST-IN-PLACE CONCRETE: EXTEND HEIGHT OF EXISTING CAST-IN-PLACE CONCRETE WALL; REFER TO STRUCTURAL DRAWINGS.

3.300 CAST-IN-PLACE CONCRETE: 4" SLAB-ON-GRADE. REFER TO PLAN AND SPECIFICATIONS FOR MIX TYPE AND FINISH.

5.001 METAL FABRICATION: STEEL TUBE COLUMN; REFER TO STRUCTURAL DRAWINGS.

6.502 WOOD BLOCKING: DIMENSIONAL LUMBER; SIZE AS REQUIRED; REFER TO SCHEDULE FOR TREATMENT.

6.606 PLYWOOD: 1/2" THICK; REFER TO SPECIFICATIONS FOR TREATMENT.

6.607 PLYWOOD: 5/8" THICK; REFER TO SPECIFICATIONS FOR TREATMENT.

6.608 PLYWOOD: 3/4" THICK; REFER TO SPECIFICATIONS FOR TREATMENT.

6.010 WOOD FRAMING: FLOOR JOIST SYSTEM; REFER TO STRUCTURAL DRAWINGS FOR SIZE AND SPACING.

6.131 DIMENSIONAL LUMBER: (2) 2X6 TOP PLATE.

6.138 WOOD FRAMING: BEAM/HEADER; REFER TO STRUCTURAL DRAWINGS.

6.202 ROUGH CARPENTRY: DIMENSIONAL LUMBER; 2X6 VERTICAL BATTENS @ 16" O.C.; FIELD PANT BATTENS PRIOR TO INSTALLATION.

7.252 WEATHER BARRIER: WATER-RESISTANT SHEET MEMBRANE FOR OPEN-JOINT WALL CLADDING; REFER TO SPECIFICATIONS.

7.253 WEATHER BARRIER: SELF-ADHERING BUTYL-RUBBER SHEET; REFER TO SPECIFICATION 07 25 00.

7.255 WEATHER BARRIER ACCESSORY: BASE FLASHING; 0.032" ALUMINUM; CLAND ANODIZED; SET BOTTOM IN CONTINUOUS BED OF SEALANT.

7.460 WOOD SIDING: BOARD RAINSCREEN SIDING; 1X4 (NOM.); 4" O.C. SPACING TO MATCH EXISTING; FIELD STAIN SIDING BOARDS PRIOR TO INSTALLATION; REFER TO SPECIFICATIONS.

7.463 FIBER CEMENT SIDING: TRIM BOARD: 7/8" WIDE X 3/4" THICK; REFER TO SPECIFICATIONS.

7.464 FIBER CEMENT SIDING PANELS: USED FOR CEILING/SOFFIT SYSTEM; REFER TO SPECIFICATIONS.

7.531 ELASTOMERIC MEMBRANE ROOFING SYSTEM: FULLY ADHERED.

7.531 ELASTOMERIC MEMBRANE ROOFING MATERIAL: EPDM MEMBRANE.

7.532 ELASTOMERIC MEMBRANE ROOFING MATERIAL: FLEXIBLE OPEN FLASHING.

7.534 ELASTOMERIC MEMBRANE ROOFING MATERIAL: RIGID INSULATION; 2 LAYERS; 2.6 INCH TYPE IV (COMPOSITE INSULATION AND HD COVER BOARD) OVER 2.6 INCH TYPE II; 5.2 INCHES TOTAL THICKNESS; R=30 (MIN).

7.536 ELASTOMERIC MEMBRANE ROOFING MATERIAL: VAPOR RETARDER.

7.537 ELASTOMERIC MEMBRANE ROOFING MATERIAL: ADHESIVE.

7.538 ELASTOMERIC MEMBRANE ROOFING ACCESSORY: TERMINATION BAR WITH SEALANT BEAD.

7.620 METAL COPING FLASHING: THICKNESS AND FINISH AS SPECIFIED.

7.760 ROOF TERRACE PAVEN SYSTEM: REFER TO SPECIFICATION SECTION 07 53 00.

7.761 ROOF TERRACE PAVEN SYSTEM COMPONENT: CONCRETE PAVEN TO MATCH EXISTING; REFER TO SPECIFICATION SECTION 07 53 00.

7.762 ROOF TERRACE PAVEN SYSTEM COMPONENT: PEDESTAL: REFER TO SPECIFICATION SECTION 07 53 00.

7.920 JOINT SEALANT: REFER TO SCHEDULE N PEDIFICATION SECTION 07 92 00; PROVIDE BACKER ROD OR BOND BREAKER.

9.912 PANT EXPOSED SURFACES OF COLUMNS.

10.016 SIGNAGE: DIMENSIONAL LETTERING W/ BACKLIT LIGHTING; SURFACE-MOUNTED TO MATCH EXISTING; CONNECT TO JUNCTION BOX PROVIDED BY THE CITY.

10.147 SIGNAGE ACCESSORY: POWER SUPPLY.

1. REFER TO A310 SHEET FOR REFLECTED CEILING PLANS FOR CEILING HEIGHTS.
2. WHERE THE WORDS "MATCH EXISTING" ARE USED IN DRAWINGS/PROJECT MANUAL, INTENT IS TO MATCH EXISTING APPEARANCE, MATERIALS AND ASSEMBLIES USED @ RIVERDEE PARK (360 N. BROADWAY, AURORA, IL 60505).

JOB NO.	19-130-1277
DRAWN	PJT
CHECKED	CDH
APPROVED	CDH

SHEET NUMBER

A1200