

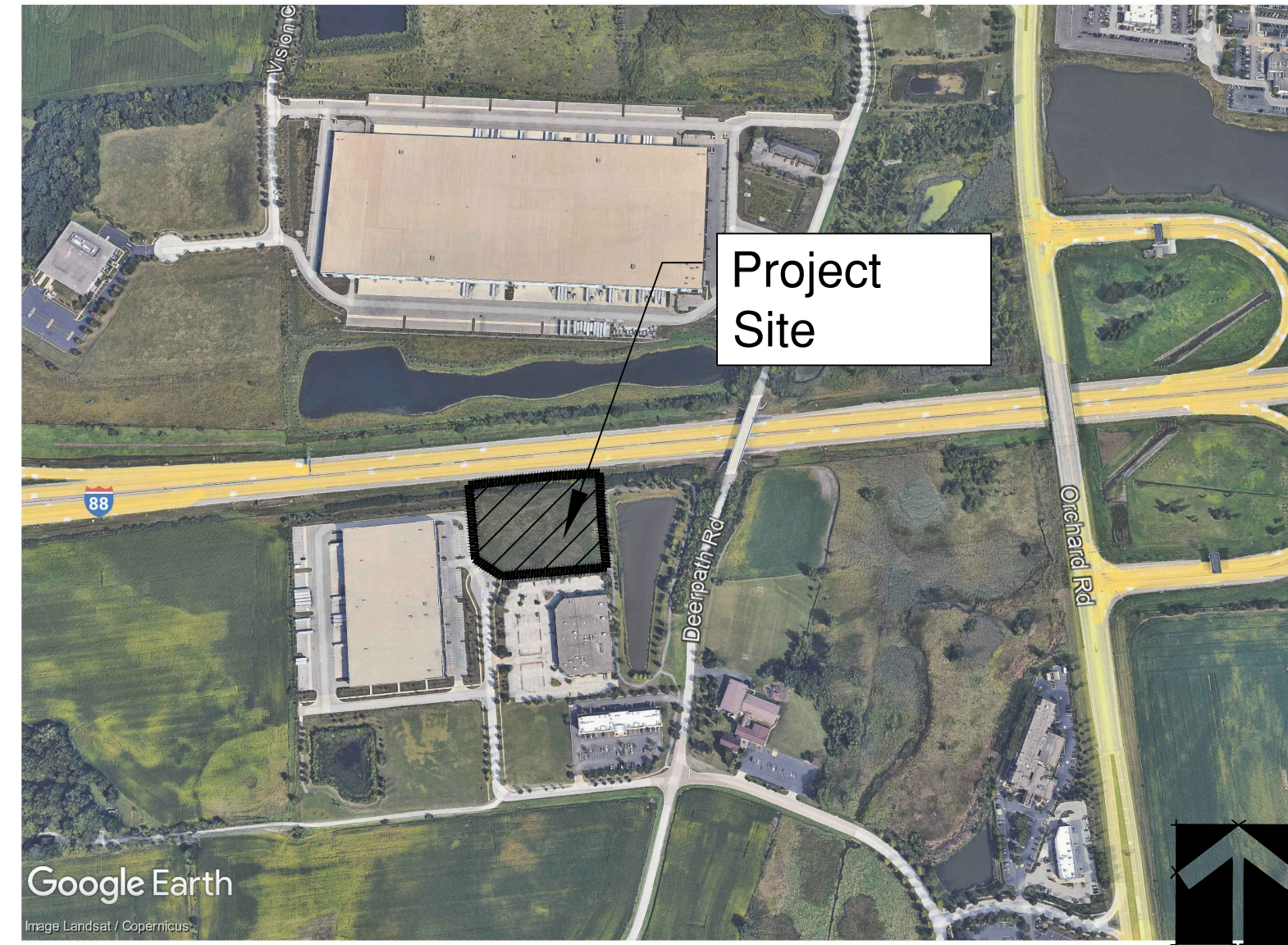
LANDSCAPE PLAN

for

LOT 8, PODOLSKY ORCHARD 88

PHASE 1

Site Location Map



SHEET INDEX

SHEET	DESCRIPTION
CS-1.0	COVER SHEET
L-1.0	LANDSCAPE PLAN
L-2.0	LANDSCAPE SPECIFICATIONS

Engineer/Architect:
 Ware Malcomb Architects
 1315 W. 22nd Street, Suite 410
 Oak Brook, IL 60523
 630.218.0063

Landscape Architect:
 Metz & Company
 826 E. Maple Street
 Lombard, IL 60148
 630.561.3903

Landscape Implementation Data Table: Plant List by Category							
	QTY	Percent	SYM	BOTANICAL NAME (Family / Genus / Species)	COMMON NAME	SIZE	COMMENTS
Canopy Trees	2	7%	ARP	Aceraceae - Acre rubrum 'Frank Jr'	Redpointe Maple	2.5" BB	
	8	28%	CO	Ulmaceae - Celtis occidentalis	Hackberry	2.5" BB	
	6	21%	GTS	Fabaceae - Gleditsia t. inermis	Honeylocust	2.5" BB	Skyline
	3	10%	GD	Legumes - Gymnocladus dioicus	Kentucky Coffeetree	2.5" BB	
	3	10%	QR	Quercaceae - Quercus rubra	Red Oak	2.5" BB	
	3	10%	TSB	Taxodiaceae - Taxodium distichum	Bald Cypress	2.5" BB	Shawnee Brave
	4	14%	TCG	Mallow - Tilia cordata 'Greenspire'	Greenspire Linden	2.5" BB	
Total:	29	100%					
Evergreen Trees	9	45%	PA	Pinaceae - Picea abies	Norway Spruce	6' BB	
	6	30%	PP	Pinaceae - Picea pungens	Colorado Spruce	6' BB	
	5	25%	PFG	Pinaceae - Picea glauca 'Densata'	Blackhills Spruce	6' BB	
		0%					
Total:	20	100%					
Understory Trees	6	30%	AAB	Rosaceae - Amelanchier x grandiflora	Apple Serviceberry	8' BB cl.	Autumn Brilliance
	4	20%	CCI	Rosaceae - Crataegus c. inermis	Thornless Cockspur Hawthorn	8' BB cl.	
	2	10%	MDW	Rosaceae - Malus 'Donald Wyman'	Donald Wyman Crabapple	2.5" BB	
	3	15%	MRJ	Rosaceae - Malus 'Red Jewel'	Red Jewel Crabapple	2.5" BB	
	2	10%	MPF	Rosaceae - Malus 'Prairiefire'	Prairiefire Crabapple	8' BB cl.	
	3	15%	BN	Betulaceae - Betula nigra 'Cully'	River Birch	8' BB cl.	
Total:	20	100%					
Deciduous Shrubs	30	20%	AIB	Rosaceae - Aronia melanocarpa 'Morton'	Iroquois Beauty Chokeberry	24" #5	
	14	9%	CSI	Cornaceae - Cornus sericea 'Isanti'	Red Twig Dogwood	24" #5	
	24	16%	CAP	Rosaceae - Cotoneaster scutifolia	Peking Cotoneaster	24" #5	
	13	9%	DKR	Caprifoliaceae - Diervilla r. 'G2X885411'	Red Kodiak Diervilla	18" #3	
	10	7%	HAA	Rosaceae - Hydrangea arborescens 'Annabelle'	Annabelle Hydrangea	24" #5	
	3	2%	HQF	Rosaceae - Hydrangea paniculata 'Bluk'	Quick Fire Hydrangea	30" #5	
	14	9%	RGL	Anacardiaceae - Rhus aromatica 'Gro-Low'	Gro-Low Sumac	18" #3	
	7	5%	SMK	Syringaceae - Syringa patula 'Miss Kim'	Miss Kim Lilac	24" #7	
	28	18%	SBF	Rosaceae - Spiraea bumalda 'Frobelii'	Frobel Spirea	18" #3	
	9	6%	VBM	Adoxaceae - Viburnum dentatum 'Christom'	Blue Muffin Viburnum	30" #5	
Total:	152	100%					
Evergreen Shrubs	43	31%	JKC	Cupressaceae - Juniperus chinensis 'Kallays Compact'	Kalley Juniper	24" #5	
	14	10%	JSG	Cupressaceae - Juniperus chinensis 'Sea Green'	Sea Green Juniper	24" #5	
	5	4%	JHH	Cupressaceae - Juniperus horizontalis 'Hughes'	Hughes Juniper	24" #5	
	25	18%	JVH	Cupressaceae - Juniperus virginiana 'Cupressifolia'	Hillspire Red Juniper	4' BB	
	25	18%	TMD	Taxaceae - Taxus media 'Densiformis'	Dense Yew	24" BB	
	26	19%	TOS	Cupressaceae - Thuja occidentalis 'Smaragd'	Emerald Green Arborvitae	4' BB	
Total:	138	100%					

Landscape Data Table: Planting Material Key			
Note: Symbols are blackline for proposed grayscale for existing			
Canopy Trees (minimum size 2.5 caliper) Count:	29		
Evergreen Trees (minimum size 6 feet) Count:	20		
Understory Trees (minimum size 2.5 caliper or 8 feet if multi-stemmed) Count:	20		
Evergreen Shrubs (minimum of 18 inches) Count:	138		
Deciduous Shrubs (minimum of 18 inches) Count:	152		
Ornamental Grasses Count:	0		
Perennials Count:	0		
Annuals Count:	0		
Groundcover Square Footage:	0		
Turf (Seeded) Square Footage:	29733		
Turf (Sod) Square Footage:	0		
Native Prairie Planting Square Footage:	0		
Native Wetland Planting Square Footage:	0		

Landscape Data Table: CTEs Provided			
	CTE Value	Count Provided	Total CTEs Provided
Canopy Trees	1	29	29
Evergreen Trees	1/3	20	7
Understory Trees	1/3	20	7
Deciduous Shrubs	1/20	152	8
Evergreen Shrubs	1/20	138	7
Total:		359	57

REVISIONS	
3	City Review Comments #2 8-15-23
2	City Review Comments #1 7-25-23
1	Plan Correction 6-3-23

LOT 8, PODOLSKY ORCHARD 88

PHASE 1

SEAL:

METZ & COMPANY
 LANDSCAPE ARCHITECTURE/SITE PLANNING
 826 East Maple Street
 Lombard, Illinois 60148
 PH: 630.561.3903
 www.metz-company.com

TITLE
COVER SHEET

PROJECT NO.:
23-231
 DATE: 5-26-2023
 SCALE: 1"=30'

SHEET
CS-1.0

© Copyright 2023. All rights reserved. The design and any and all ideas contained herein are the sole property of Metz & Company. Any reproduction of the design or the concept embodied herein in any form, in whole or in part, without consent from Metz & Company is prohibited. If this plan is not 24" x 36" in size, then it is a reproduction that may not be to scale.

GENERAL NOTES:

Plant material shall be nursery grown and be either balled and bur-lapped or container grown. Sizes and spreads on plant list represent minimum requirements.

The requirements for measurement, branching and ball size shall conform to the latest addition of ANSI Z60.1, AMERICAN STANDARD OF NURSERY STOCK by the American Nursery & Landscape Association.

Any materials with damaged or crooked/distorted leaders, bark abrasion, sunscald, insect damage, etc. are not acceptable and will be rejected. Trees with multiple leaders will be rejected unless called for in the plant list as multi-stem or clump (cl.).

If any mistakes, omissions, or discrepancies are found to exist with the work product, the Landscape Architect shall be promptly notified so that they have the opportunity to take any steps necessary to resolve the issue. Failure to promptly notify the Landscape Architect and the Owner of such conditions shall absolve them from any responsibility for the consequences of such failure.

Under no circumstances should these plans be used for construction purposes without examining actual locations of utilities on site, and reviewing all related documents mentioned herein, including related documents prepared by the project Civil Engineer and Architect.

Civil Engineering or Architectural base information has been provided by others. The location of various site improvements on this set of drawings is only illustrative and should not be relied upon for construction purposes.

Quantity lists are supplied as a convenience. However, Bidders and the Installing Contractor should verify all quantities. The drawings shall take precedence over the lists. Any discrepancies shall be reported to the Landscape Architect.

Actions taken without the knowledge and consent of the Owner and the Landscape Architect or in contradiction to the Owner and the Landscape Architect's work product or recommendations, shall become the responsibility not of the Owner and the Landscape Architect, but for the parties responsible for the taking of such action.

Refer to Civil Engineering documents for detailed information regarding size, location, depth and type of utilities, as well as locations of other site improvements, other than landscape improvements.

Plant symbols illustrated on this plan are a graphic representation of proposed plant material types and are intended to provide for visual clarity. However, the symbols do not necessarily represent actual plant spread at the time of installation.

All plant species specified are subject to availability. Material shortages in the landscape industry may require substitutions. All substitutions must be approved by the Village, Landscape Architect and Owner.

The Landscape Contractor shall verify location of all underground utilities prior to digging by calling "J.U.L.I.E." (Joint Utility Location for Excavators) 1-800-892-0123 and any other public or private agency necessary for utility location.

All perennial, ornamental grass, groundcover and annual beds shall be top dressed with a minimum of three inches (3") of mushroom compost. The top dressing shall be worked into the soil to a minimum depth of nine inches (9") by the use of a cultivating mechanism. Upon completion perennials & ornamental grasses shall be mulched with an additional two inch (2") layer of shredded wood mulch. Annuals & groundcovers shall be covered with a two inch (2") layer of southern pine bark fines mulch.

All other planting beds and tree saucers shall be mulched with a minimum of three inches (3") of shredded wood mulch.

Planting beds adjacent to building shall be mulched in their entirety to the building foundation. Plant materials shall not be installed under building overhangs and other such areas which do not receive natural rainfall.

Mulch beds at the time of planting shall extend a minimum of two feet (2') beyond the center of a shrub.

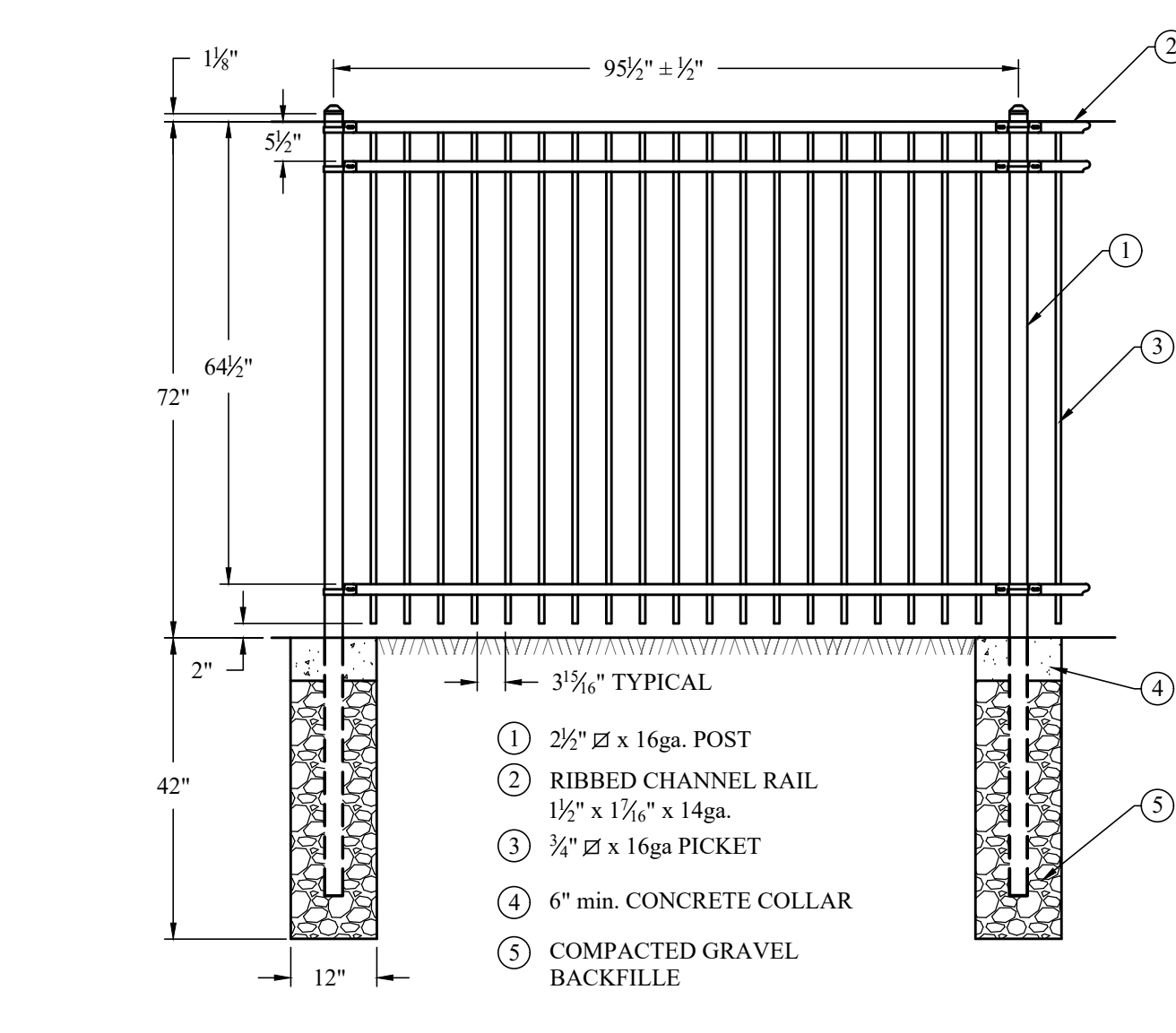
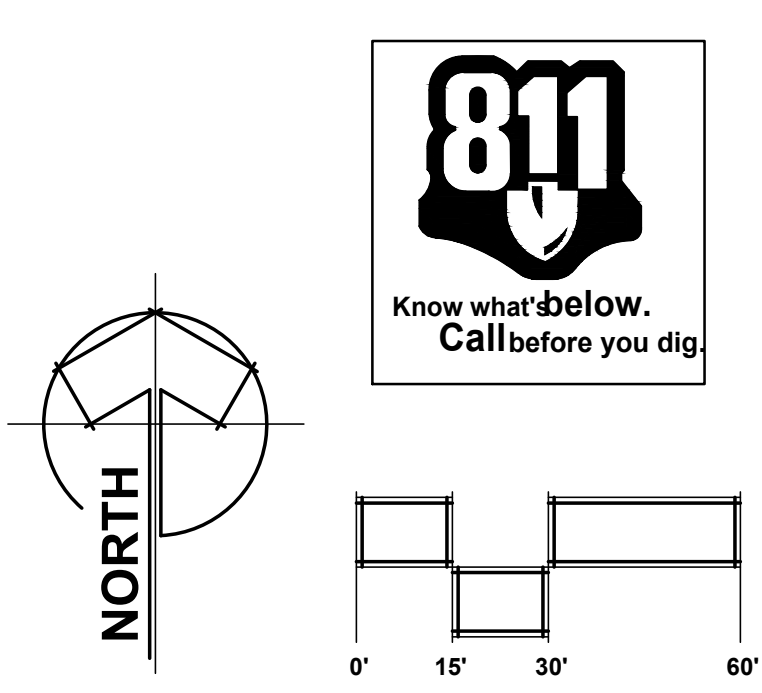
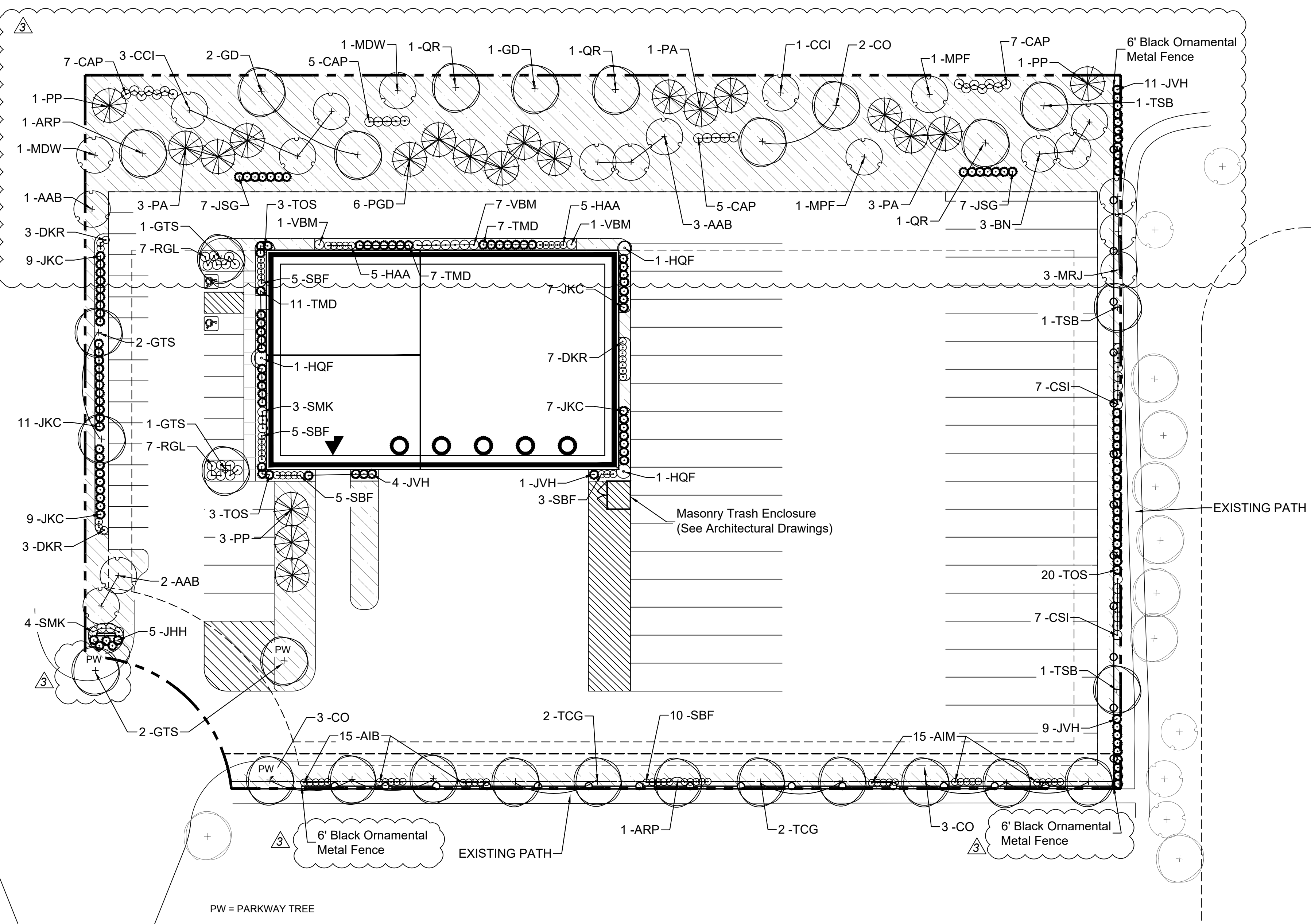
All bed lines and tree saucers shall require a hand spaded edge between lawn and mulched areas.

Grading shall provide slopes which are smooth and continuous. Positive drainage shall be provided in all areas.

Seed mixes shall be applied mechanically so that the seed is incorporated into the top one-half inch (1/2") of the seed bed. The seed shall then be covered with the specified blanket (installed per manufacturer's specs) or Hydro-mulch.

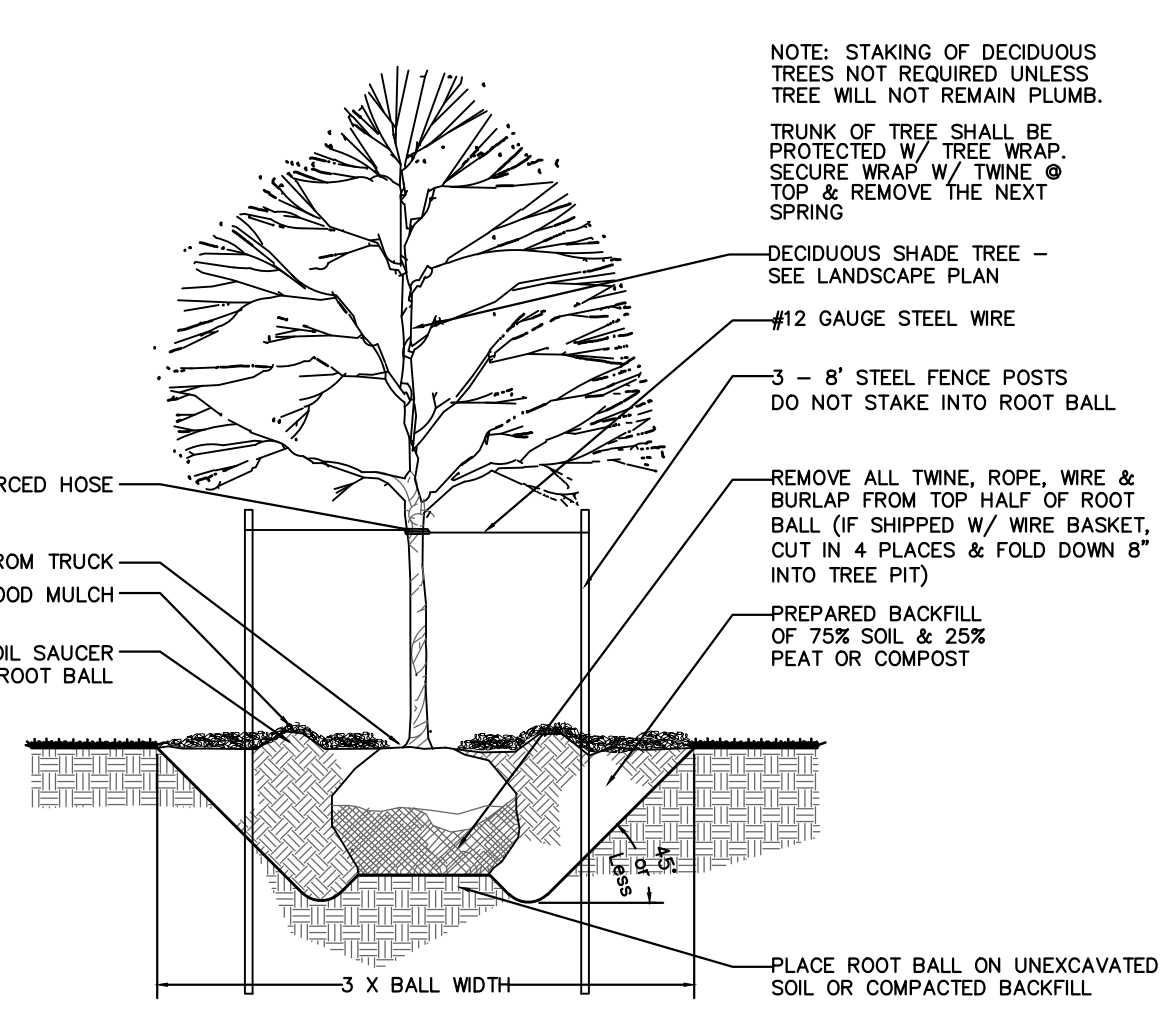
All plant material shall be guaranteed for one (1) year from the date of acceptance.

KEY	QTY	BOTANICAL NAME	COMMON NAME	SIZE/TYPE
DECIDUOUS SHADE TREES				
ARP	2	Acer r. 'Frank Jr'	Redpointe Maple	2.5" BB
CO	8	Celtis occidentalis	Hackberry	2.5" BB
GTS	6	Gleditsia t. 'Skyline'	Skyline Honeylocust	2.5" BB
GD	3	Gymnocladus dioica	Kentucky Coffeetree	2.5" BB
QR	3	Quercus rubra	Red Oak	2.5" BB
TSB	3	Taxodium d. 'Mickelson'	Shawnee Brave Bald Cypress	2.5" BB
TCG	4	Tilia c. 'Greenspire'	Greenspire Littleleaf Linden	2.5" BB
EVERGREEN TREES				
PA	9	Picea abies	Norway Spruce	6" BB
PGD	6	Picea g. 'Densata'	Black Hills Spruce	6" BB
PP	5	Picea pungens	Colorado Green Spruce	6" BB
DECIDUOUS ORNAMENTAL TREES				
AAB	6	Amelanchier g. 'Autumn Brilliance'	Autumn Brilliance Serviceberry	8" BBcl.
BN	3	Betula n. 'Cully'	Heritage River Birch	8" BBcl.
CCI	4	Crataegus c. inermis	Thornless Cockspur Hawthorn	8" BBcl.
MDW	2	Malus 'Donald Wyman'	Donald Wyman Crabapple	2.5" BB
MRJ	3	Malus 'Red Jewel'	Red Jewel Crabapple	2.5" BB
MPF	2	Malus 'Prairie Fire'	Prairie Fire Crabapple	8" BBcl.
DECIDUOUS SHRUBS & SHRUB ROSES				
AIB	30	Aronia m. 'Morton'	Iroquois Beauty Chokeberry	24"/#5
CSI	14	Cornus s. 'Insamit'	Red Twig Dogwood	24"/#5
CAP	24	Cotoneaster acutifolia	Peking Cotoneaster	24"/#5
DKR	13	Diervilla r. 'G2X85411'	Red Kodiak Diervilla	18"/#3
HAA	10	Hydrangea a. 'Annabella'	Annabelle Hydrangea	24"/#5
HQF	3	Hydrangea p. 'Bulk'	Quick Fire Hydrangea	30"/#5
RGL	14	Rhus a. 'Gro-Low'	Gro-Low Sumac	18"/#3
SBF	28	Spiraea b. 'Froebel'	Froebel Spiraea	18"/#3
SMK	7	Syringa p. 'Miss Kim'	Miss Kim Lilac	24"/#7
VBM	9	Viburnum d. 'Christom'	Blue Muffin Arrowwood Viburnum	30"/#5
EVERGREEN SHRUBS				
JKC	43	Juniperus c. 'Kalleys'	Kalleys Compact Juniper	24"/#5
JSG	14	Juniperus c. 'Sea Green'	Sea Green Juniper	24"/#5
JHH	5	Juniperus h. 'Hughes'	Hughes Juniper	24"/#5
JHJ	25	Juniperus v. 'Cupressifolia'	Hillspire Juniper	4" BB
TMD	25	Taxus m. 'Densiformis'	Dense Yew	24" BB
TOS	26	Thuja o. 'Smaragd'	Emerald Green Arborvitae	4" BB
MATERIAL & LABOR LIST:				
QTY	ITEM	DESCRIPTION		
3,300 SY	Seed w/ Straw Blanket	IDOT Class 1-A Lawn Seed Mix		
70 CY	Mulch	ST5 by North American Green (or equal)		
650 LF	Fence	Shredded Hardwood Bark		
		6" Black Ornamental Metal Fence		



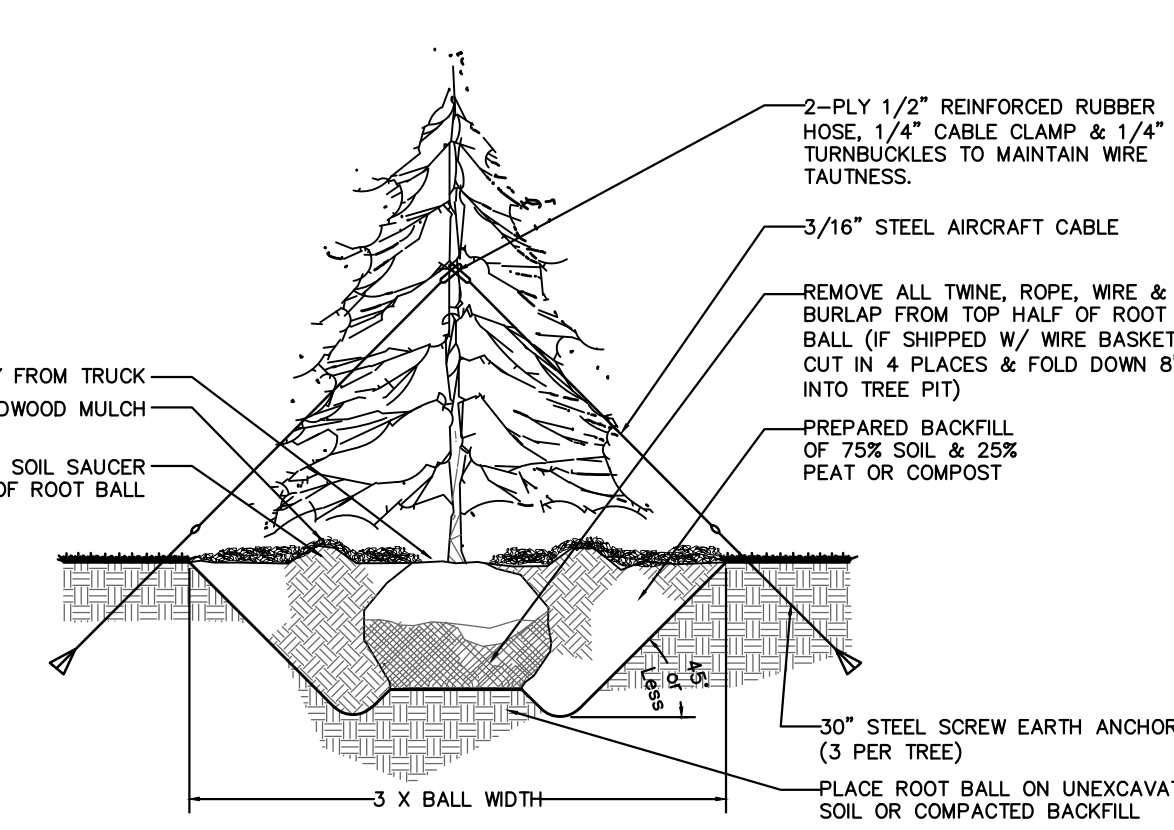
6' PERIMETER FENCE

1/4" = 1'-0"



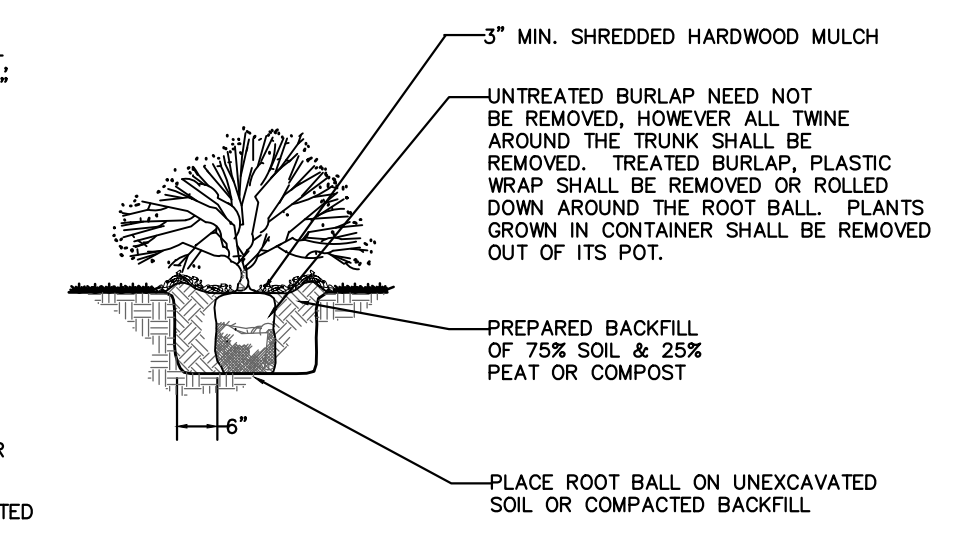
DECIDUOUS TREE

n.i.s.



EVERGREEN TREE

n.i.s.



SHRUBS

n.i.s.

REVISIONS	
3	City Review Comments #2 8-15-23
2	City Review Comments #1 7-25-23
1	Plan Correction 6-3-23

LOT 8, PODOLSKY ORCHARD 88

PHASE 1

SEAL:

METZ & COMPANY
LANDSCAPE ARCHITECTURE/SITE PLANNING

826 East Maple Street
Lombard, Illinois 60148
PH: 630.561.3903
www.metz-company.com

TITLE
LANDSCAPE PLAN

PROJECT NO.:
23-231

DATE: 5-26-2023

SCALE: 1" = 30'

SHEET
L-1.0

© Copyright 2023. All rights reserved. The design and any and all ideas contained herein are the sole property of Metz & Company. Any reproduction of the design or the concept embodied herein in any form, in whole or in part, without consent from Metz & Company is prohibited. If this plan is not 24" x 36" in size, then it is a reproduction that may not be to scale.

