

# LANDSCAPE PLAN for DEERPATH COMMERCE CENTER

## GENERAL NOTES:

Plant material shall be nursery grown and be either balled and burlapped or container grown. Sizes and spreads on plant list represent minimum requirements.

Size & grading standards of plant materials shall conform to the latest addition of ANSI Z60.1 AMERICAN STANDARD OF NURSERY STOCK, by the American Nursery & Landscape Association.

Any materials with damaged or crooked/distorted leaders, bark abrasion, sunscald, insect damage, etc. are not acceptable and will be rejected. Trees with multiple leaders will be rejected unless called for in the plant list as multi-stem or clump (cl).

Grading shall provide slopes which are smooth and continuous. Positive drainage shall be provided in all areas.

Quantity lists are supplied as a convenience. However, the contractor should verify all quantities. The drawings shall take precedence over the lists.

All plant species specified are subject to availability. Material shortages in the landscape industry may require substitutions. All substitutions must be approved by the Landscape Architect and/or Owner.

Contractor shall verify location of all underground utilities prior to digging. For location outside the City of Chicago call "J.U.L.I.E." (Joint Utility Location for Excavators) 1-800-892-0123.

Grass seed shall be applied mechanically so that the seed is incorporated into the top one-half inch (1/2") of the seed bed. The seed shall then be covered with the specified straw blanket or Hydro-mulch.

Contractor shall report any discrepancies in the field to the Landscape Architect and/or Owner.

Plant symbols illustrated on this plan are a graphic representation of proposed plant material types and are intended to provide visual clarity. However, the symbols do not necessarily represent actual plant spread at the time of installation.

All perennial, ornamental grass, groundcover and annual beds shall be topdressed with a minimum of three inches (3") of mushroom compost. The topdressing shall be worked into the soil to a minimum depth of nine inches (9") by the use of a cultivating mechanism. Upon completion perennials & ornamental grasses shall be mulched with an additional two inch (2") layer of shredded wood mulch; Annuals & groundcovers shall be covered with an additional two inch (2") layer of mushroom compost.

All other planting beds and tree saucers shall be mulched with a minimum of three inches (3") of shredded wood mulch, with the exception of evergreen trees which shall receive one inch (1") of shredded hardwood mulch over two inches (2") of southern pine bark.

All bed lines and tree saucers shall require a hand spaced edge between lawn and mulched areas.

Planting beds adjacent to building shall be mulched in their entirety to the building foundation. Plant materials shall not be installed under building overhangs and other such areas which do not receive natural rainfall.

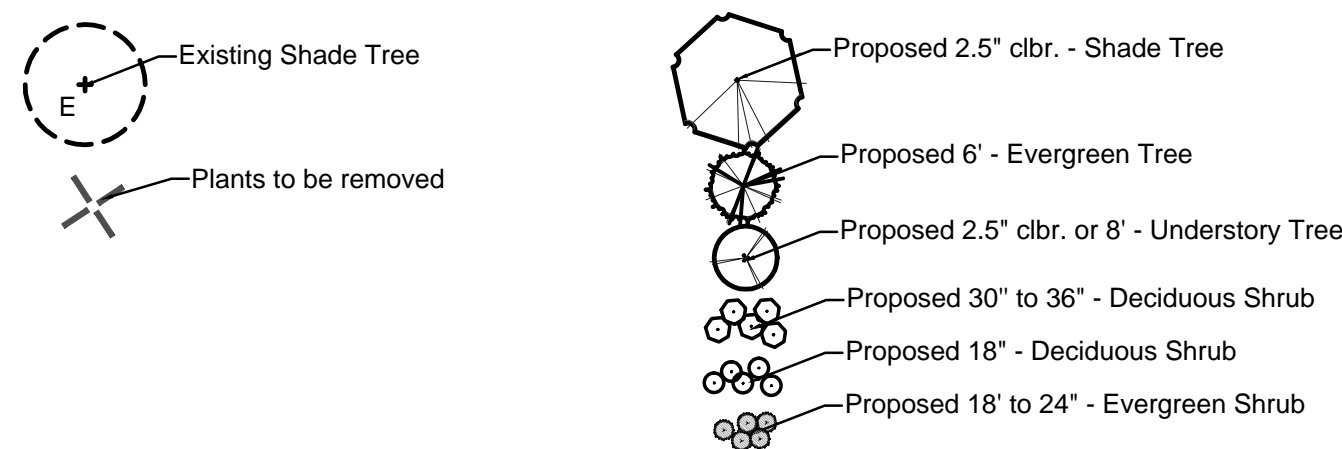
All plant material shall be guaranteed for one (1) year from the date of acceptance.



LOCATION MAP

Landscape Data Table: Landscape Plan			
Description	Value	Unit	
a) Tax/Parcel Identification Number(s) (PINs): 14-01-426-001, 14-01-426-002, 14-01-426-003			
b) Total Property Size	47.66	Acres	
	2,075,989	Square Feet	
c) Total Lot Coverage (buildings and pavement)	522,720	Square Feet	
	25%	Percent	
d) open space / landscaping	1,553,269	Square Feet	
	75%	Percent	
e) Total Street Frontage (existing and proposed)	4,233	Linear Footage	
f) Building Foundation perimeter (Typical)	2,236	Linear Footage	
g) Total Perimeter Yard	11,581	Linear Footage	
h) Buffer Yard	-	Linear Footage	
i) Neighborhood Border	-	Linear Footage	
j) Total High-water Line for all Stormwater Detention/Retention Facilities	2,836.00	Linear Footage of Wet Bottom	
k) Number of Surface Parking Lot Spaces	93	Spaces of Dry Bottom	
l) Total Number of Residential Dwelling Units	-	units	
m) Total Number Single Family Corner Lots	-	units	

## LEGEND



Landscape Material Data Table: Landscape Plan			
Symbol	Description	Value	Unit
	<b>a) Total Canopy Trees</b>	<b>1 CTE</b>	<b>Count = 506</b>
	Existing Mixed Species Canopy Trees	13%	Percent of Canopy Trees
	Acer freemanii 'Marmo' - Freeman Maple	3.5' to 6.5'	Caliper at Installation (inches)
	Acer nigrum 'Green Column' - Black Maple	2.5'	Percent of Canopy Trees
	Acer rubrum 'Franksred' - Red Maple	2.5'	Caliper at Installation (inches)
	Acer r. 'October Glory' - Red Maple	2.5'	Percent of Canopy Trees
	Aesculus glabra - Ohio Buckeye	2.5'	Caliper at Installation (inches)
	Catalpa speciosa - Northern Catalpa	2.5'	Percent of Canopy Trees
	Celtis occidentalis - Hackberry	2.5'	Caliper at Installation (inches)
	Ginkgo b. 'Princeton Sentry' - Ginkgo	2.5'	Percent of Canopy Trees
	Gymnocladus dioica - Kentucky Coffeetree	2.5'	Caliper at Installation (inches)
	Juglans nigra - Black Walnut	2.5'	Percent of Canopy Trees
	Plantanus acerifolia - London Planetree	2.5'	Caliper at Installation (inches)
	Quercus bicolor - Swamp White Oak	2.5'	Percent of Canopy Trees
	Quercus imbricaria - Shingle Oak	2.5'	Caliper at Installation (inches)
	Quercus muehlenbergii - Chickapin Oak	2.5'	Percent of Canopy Trees
	Quercus rubra - Northern Red Oak	2.5'	Caliper at Installation (inches)
	Salix a. 'Trists' - Weeping Willow	2.5'	Percent of Canopy Trees
	Taxodium distichum - Bald Cypress	2.5'	Caliper at Installation (inches)
	Tilia americana 'McKsentry' - Linden	2.5'	Percent of Canopy Trees
	Ulmus parvifolia 'Frontier' - Frontier Elm	2.5'	Caliper at Installation (inches)
	<b>b) Total Evergreens</b>	<b>3 = 1 CTE</b>	<b>Count = 102</b>
	Picea abies - Norway Spruce	6'	Percent of Evergreens
	Picea glauca densata - Black Hills Spruce	6'	Height at Installation (feet)
	Picea pungens - Colorado Spruce	6'	Percent of Evergreens
	Pinus flexilis - Limber Pine	6'	Height at Installation (feet)
	Pinus nigra - Austrian Pine	6'	Percent of Evergreens
	Pinus strobus - White Pine	6'	Height at Installation (feet)
Pseudotsuga menziesii - Douglas Fir	6'	Percent of Evergreens	
<b>c) Total Understory Trees</b>	<b>3 = 1 CTE</b>	<b>Count = 277</b>	
Alnus rugosa - Speckled Alder	8'	Percent of Understory Trees	
Alnus glutinosa - Black Alder	8'	Or Multi-stemmed Height at Installation (feet)	
Amelanchier grandiflora - Apple Serviceberry	8'	Percent of Understory Trees	
Betula nigra - River Birch	8'	Or Multi-stemmed Height at Installation (feet)	
Crataegus c. inermis - Hawthorn	8'	Percent of Understory Trees	
Crataegus phaenopynum - Hawthorn	8'	Or Multi-stemmed Height at Installation (feet)	
Cercis canadensis - Redbud	8'	Percent of Understory Trees	
Cornus mas - Cornelian Cherry Dogwood	8'	Or Multi-stemmed Height at Installation (feet)	
Hamamelis virginiana - Witchhazel	8'	Percent of Understory Trees	
Malus 'Adams' - Crabapple	8'	Or Multi-stemmed Height at Installation (feet)	
Malus 'Donald Wymann' - Crabapple	8'	Percent of Understory Trees	
Malus 'Red Jewel' - Crabapple	8'	Or Multi-stemmed Height at Installation (feet)	
Viburnum prunifolium - Blackhaw Viburnum	8'	Percent of Understory Trees	
<b>d) Total Deciduous Shrubs</b>	<b>20 = 1 CTE</b>	<b>Count = 1021</b>	
Aronia melanocarpa - Black Chokeberry	3'	Percent of Shrubs	
Cornus s. 'Baileyi' - Red Twig Dogwood	3'	Height at Installation (inches)	
Cornus racemosa - Grey Dogwood	3'	Percent of Shrubs	
Corylus americana - American Hazelnut	3'	Height at Installation (inches)	
Cotoneaster acutifolia - Peking Cotoneaster	3'	Percent of Shrubs	
Diervilla sessilifolia - Bush Honeysuckle	3'	Height at Installation (inches)	
Euonymus a. 'Compactus' - Burning Bush	18"	Percent of Shrubs	
Hydrangea a. 'Abetwo' - Incrediball Hydrangea	3'	Height at Installation (inches)	
Hydrangea p. 'Bombshell' - Hydrangea	18"	Percent of Shrubs	
Hydrangea p. 'Vanilla Strawberry' - Hydrangea	18"	Height at Installation (inches)	
Physocarpus opulifolius - Ninebark	30"	Percent of Shrubs	
Rhus a. 'Grow Low' - Grow Low Sumac	30"	Height at Installation (inches)	
Rhus copallina 'Morton' - Prairie Flame Sumac	18"	Percent of Shrubs	
Syringa p. 'Miss Kim' - Miss Kim Lilac	30"	Height at Installation (inches)	
Syringa x. 'Penda' - Lilac	24"	Percent of Shrubs	
Viburnum d. 'Christom-Blue Muffin Viburnum	18"	Height at Installation (inches)	
Viburnum dentatum - Arrowwood Viburnum	30"	Percent of Shrubs	
Viburnum lentago - Nannyberry Viburnum	30"	Height at Installation (inches)	
Viburnum t. 'Compacta' - Am. Cranberry Bush	3'	Percent of Shrubs	
<b>e) Total Evergreen Shrubs</b>	<b>20 = 1 CTE</b>	<b>Count = 100</b>	
Juniperus c. 'Kallie's-Kalleys Juniper	24" spread	Percent of Shrubs	
Juniperus c. 'Sea Green'-Sea Green Juniper	24" spread	Height at Installation (inches)	
Juniperus h. 'Hughes'-Hughes Juniper	24" spread	Percent of Shrubs	
Taxus media 'Deniformis'-Dense Yew	24" spread	Height at Installation (inches)	
Thuja o. 'Smaragd' - Arborvitae	24" spread	Percent of Shrubs	

© 2015 Ives/Ryan Group, Inc. Copyright 2015 Ives/Ryan Group, Inc., all rights reserved. The design and any and all ideas contained herein are the sole property of the Ives/Ryan Group, Inc. Reproduction of the design or concept embodied herein in any form, in whole or in part, without the consent of the Ives/Ryan Group, Inc. is prohibited.

## REVISIONS

City Review Comments	Date
3 City Review Comments	7-21-15
2 Revised base	7-6-15
1 For Permit	7-1-15

## DEERPATH COMMERCE CENTER

Aurora, Illinois

## OWNER :

AURORA CHRISTIAN SCHOOL  
2255 Sullivan Road  
Aurora, IL 60506



Landscape Architecture  
Park & Recreation Design  
Site & Community Planning

www.ivesryangroup.com

## LANDSCAPE COVER SHEET

PROJECT NO.: JOB NO.:

L615 8732A

DATE: 5/5/15

SCALE: 1"=40'

PLANNER: RM

DRAWN BY: RM

CHECKED: \_\_\_\_\_

SHEET

L-1



**PLANT LIST**

KEY	QTY	BOTANICAL NAME	COMMON NAME	SIZE/TYPE
<b>DECIDUOUS SHADE TREES</b>				
E	73	Mixed Species of Parkway Trees		
AFM	29	Acer f. 'Mormo'	Mormo Freeman Maple	2.5" BB
AGC	6	Acer n. 'Green Column'	Green Column Black Maple	2.5" BB
ARF	38	Acer r. 'Franksred'	Red Sunset Red maple	2.5" BB
AROG	20	Acer r. 'October Glory'	October Glory Red Maple	2.5" BB
AOB	6	Aesculus glabra	Ohio Buckeye	2.5" BB
CS	23	Catalpa speciosa	Northern Catalpa	2.5" BB
CO	24	Celtis occidentalis	Hickberry	2.5" BB
GB	4	Ginkgo b. 'Princeton Sentry'	Princeton Sentry Ginkgo	2.5" BB
GD	40	Gymnocladus dioica	Kentucky Coffeetree	2.5" BB
JN	17	Juglans nigra	Black Walnut	2.5" BB
PLP	39	Platanus x.a. 'Morton Circle'	Exclamation London Planetree	2.5" BB
QB	55	Quercus bicolor	Swamp White Oak	2.5" BB
QI	10	Quercus imbricaria	Shingle Oak	2.5" BB
QM	10	Quercus muehlenbergii	Chinkapin Oak	2.5" BB
QR	21	Quercus rubra	Northern Red Oak	2.5" BB
SAT	16	Salix a. 'Tristes'	Golden Nipoe Weeping Willow	2.5" BB
TD	42	Taxodium distichum	Bald Cypress	2.5" BB
TAM	13	Tilia a. 'McKsenty'	American Sentry Linden	2.5" BB
UF	20	Ulmus 'Frontier'	Frontier Elm	2.5" BB
506				

<b>EVERGREEN TREES</b>				
PA	17	Picea abies	Norway Spruce	6" BB
PCD	12	Picea g. 'Densata'	Black Hills Spruce	6" BB
PP	15	Picea pungens	Colorado Green Spruce	6" BB
PN	15	Pinus nigra	Austrian Pine	6" BB
PF	18	Pinus flexilis	Limber Pine	6" BB
PS	7	Pinus strobus	Eastern White Pine	6" BB
PM	18	Pseudotsuga menziesii	Douglas Fir	6" BB
102				

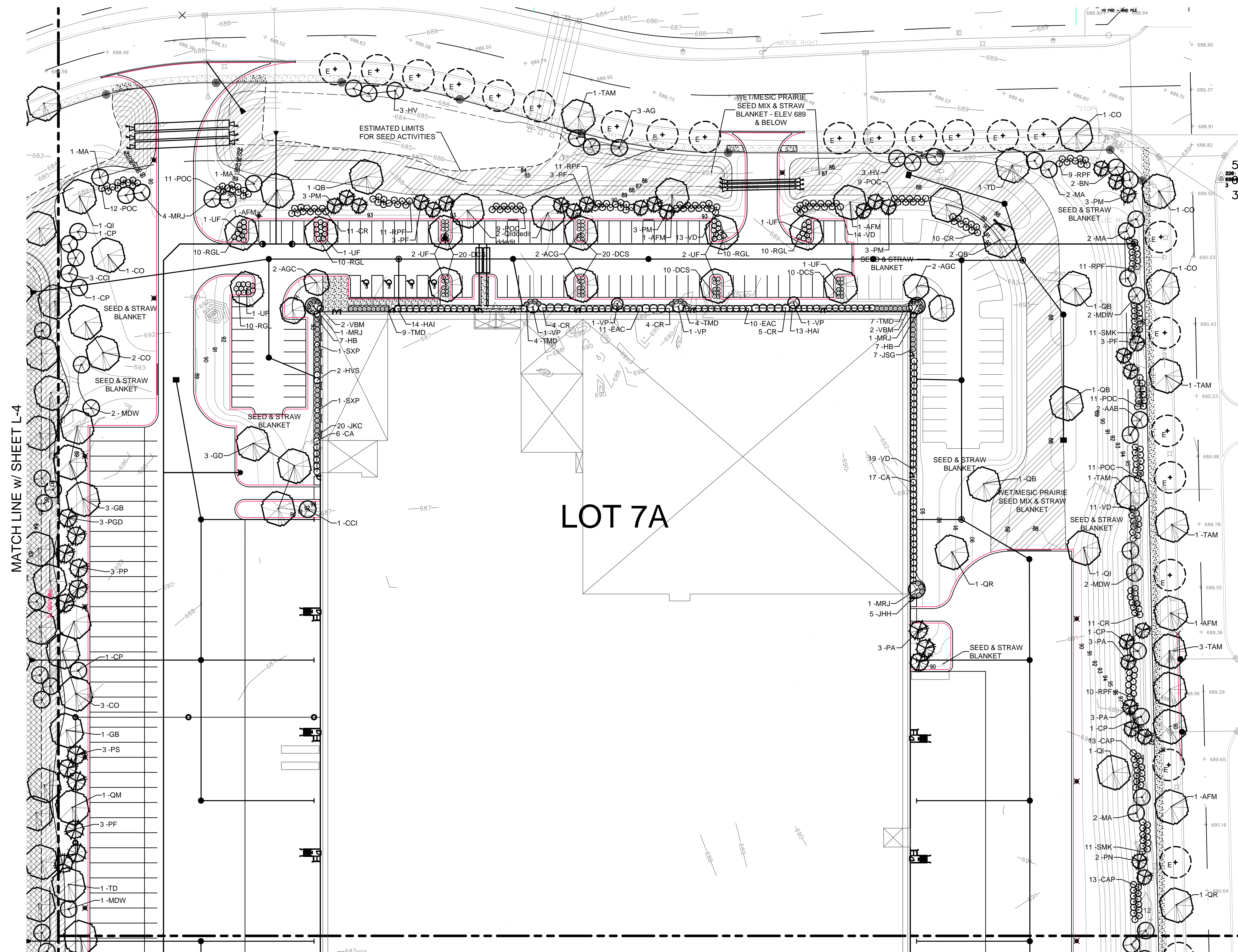
<b>DECIDUOUS ORNAMENTAL TREES</b>				
AG	31	Alnus glutinosa	European Black Alder	8" BB/d.
AR	17	Alnus rugosa	Speckled Alder	#15/8"
AAB	42	Amelanchier g. 'Autumn Brilliance'	Autumn Brilliance Serviceberry	8" BB/d.
BN	41	Betula nigra	River Birch	8" BB/d.
CC	13	Cercis canadensis	Eastern Redbud	8" BB/d.
CM	24	Cornus mas	Cornelian Cherry Dogwood	8" BB/d.
CCI	14	Crataegus c. inermis	Thornless Cocksbur Hawthorn	8" BB/d.
CP	19	Crataegus phaenopyrum	Washington Hawthorn	8" BB/d.
HV	17	Hamelis virginiana	Common Witch Hazel	8" BB/d.
MA	14	Malus 'Adams'	Adams Crabapple	8" BB/d.
MDW	12	Malus 'Donald Wyman'	Donald Wyman Crabapple	8" BB/d.
MRJ	16	Malus 'Red Jewel'	Red Jewel Crabapple	2.5" BB
VP	17	Viburnum prunifolium	Blackhaw Viburnum	8" BB/d.
277				

<b>DECIDUOUS SHRUBS &amp; SHRUB ROSES</b>				
AM	55	Aronia melanocarpa	Black Chokeberry	3" BB
CSR	82	Cornus s. 'Bailey'	Red Twig Dogwood	3" BB
CR	115	Cornus racemosa	Grey Dogwood	3" BB
CA	23	Corylus americana	American Hazelnut	3" BB
CAP	52	Cotoneaster acutifolia	Peking Cotoneaster	3" BB
DCS	60	Dienella s. 'LPDC Podaras'	Cool Splash Bush Honeysuckle	#2
EAC	21	Euonymus a. 'Compactus'	Dwarf Burningbush	3" BB
HAI	27	Hydrangea a. 'Abetwo'	Incrediball Hydrangea	#5
HB	14	Hydrangea p. 'Bombshell'	Bombshell Hydrangea	#3
HVS	2	Hydrangea p. 'Vanilla Strawberry'	Vanilla Strawberry Hydrangea	#5
POC	73	Physocarpus o. 'Minda'	Coppertina Ninebark	#5
RGL	50	Rhus a. 'Gro-Low'	Gro-Low Sumac	#5
RPF	130	Rhus c. 'Morton'	Prairie Flame Shining Sumac	30" #5
SMK	46	Syringa p. 'Miss Kim'	Miss Kim Lilac	#3
SXP	2	Syringa x 'Penda'	Boomerang Purple Lilac	#5
VBM	22	Viburnum d. 'Christom'	Blue Muffin Arrowwood Viburnum	30" #5
VD	149	Viburnum dentatum	Arrowwood Viburnum	3" BB
VL	38	Viburnum lentago	Nannyberry Viburnum	3" BB
VTC	60	Viburnum t. 'Compacta'	Dwf. Am. Cranberry Bush Viburnum	3" BB
1021				

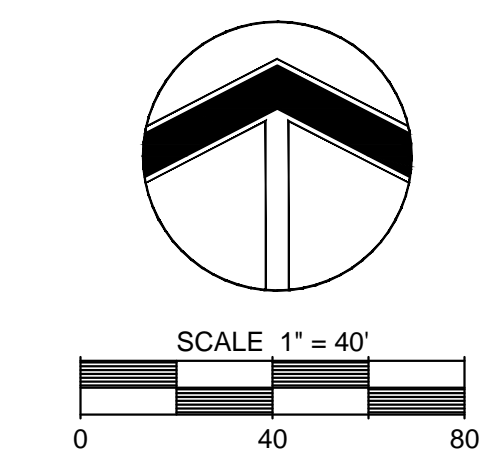
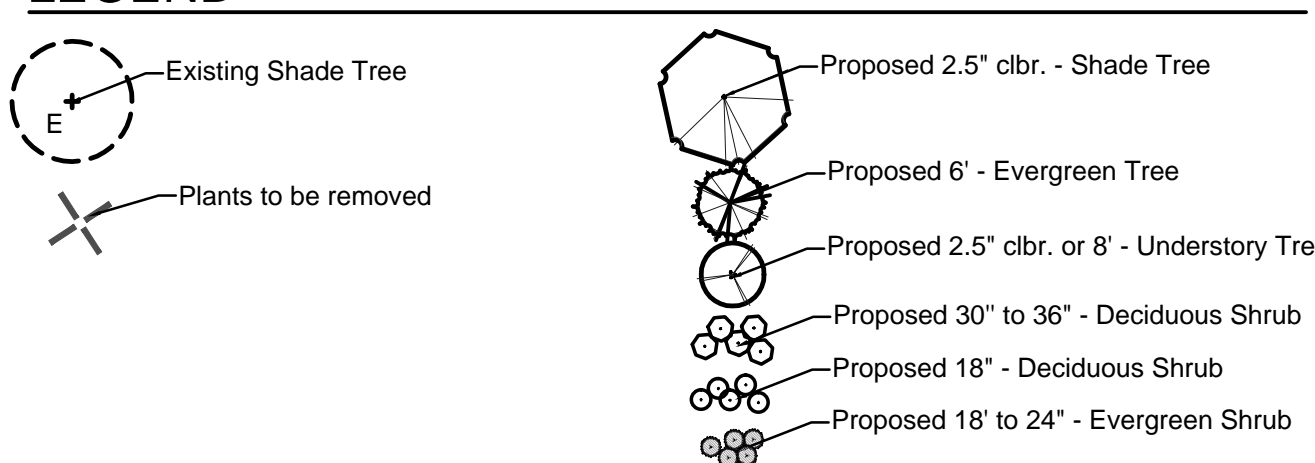
<b>EVERGREEN SHRUBS</b>				
JKC	20	Juniperus c. 'Kalleys'	Kalleys Compact Juniper	24" #5
JSG	7	Juniperus c. 'Sea Green'	Sea Green Juniper	24" #5
JHH	15	Juniperus h. 'Hughes'	Hughes Juniper	24" #5
TMD	24	Taxis m. 'Densiformis'	Dense Yew	24" #5
TOS	34	Thuja o. 'Smaragd'	Emerald Green Arborvitae	4" BB
100				

**MATERIAL & LABOR LIST:**

QTY	ITEM	DESCRIPTION
3085 SY	Native Seed	Stormwater Seed Mix By: CardnoJNNew (or equal)
7840 SY	Native Seed	Economy Prairie Seed Mix By: CardnoJNNew (or equal)
3520 SY	Native Seed	Wet/Mesic Prairie Seed Mix By: CardnoJNNew (or equal)
13105 SY	Straw Blanket	AEC Premier Straw Blanket (or equal)
1340 SY	Straw/Coconut Blanket	AEC Premier Straw/Coconut Blanket (or equal)
14410 SY	Seed w/ Straw Blanket	Kentucky Bluegrass Blend w/Perennial Rye S75 by North American Green (or equal)
9 AC	Seed w/ Hydro-Mulch	Kentucky Bluegrass Blend w/Perennial Rye SoilCover Hydraulic Wood Mulch
270 CY	Mulch	Shredded Hardwood Bark
8 CY	Mulch	Southern Pine Bark Fines



**LEGEND**



© 2015 Ives/Ryan Group, Inc. Copyright 2015 Ives/Ryan Group, Inc. All rights reserved. The design and any and all ideas contained herein are the sole property of the Ives/Ryan Group, Inc. Reproduction of the design or concept embodied herein in any form, in whole or in part, without the consent of the Ives/Ryan Group, Inc. is prohibited.

**REVISIONS**

3	City Review Comments	7-21-15
2	Revised base	7-6-15
1	For Permit	7-1-15

**DEERPETH COMMERCE CENTER**  
Aurora, Illinois

OWNER:  
AURORA CHRISTIAN SCHOOL  
2255 Sullivan Road  
Aurora, IL 60506

**IRG** Ives/Ryan Group, Inc.  
324 EISENHOWER LANE N.  
LOMBARD, IL 60148  
PHONE: 630.717.0726  
Landscape Architecture  
Park & Recreation Design  
Site & Community Planning  
www.ivesryangroup.com

**LANDSCAPE PLAN LOT 7A**  
PROJECT NO.: JOB NO.:  
**L615 8732A**  
DATE: 5/5/15  
SCALE: 1"=40'  
PLANNER: RM  
DRAWN BY: RM  
CHECKED: \_\_\_\_\_  
**SHEET L-2**

**CALL JULIE**  
48 HOURS  
BEFORE YOU DIG  
1-800-992-0123  
TOLL FREE  
Operates 24 Hours  
Every Day



© 2015 Ives/Ryan Group, Inc. Copyright 2015 Ives/Ryan Group, Inc., all rights reserved. The design and any and all ideas contained herein are the sole property of the Ives/Ryan Group, Inc. Reproduction of the design or concept embodied herein in any form, in whole or in part, without the consent of the Ives/Ryan Group, Inc. is prohibited.

**REVISIONS**

3 City Review Comments	7-21-15
2 Revised base	7-6-15
1 For Permit	7-1-15

**DEERPATH COMMERCE CENTER**  
Aurora, Illinois

**OWNER :**  
AURORA CHRISTIAN SCHOOL  
2255 Sullivan Road  
Aurora, IL 60506

**IRG** Ives/Ryan Group, Inc.  
324 EISENHOWER LANE N.  
LOMBARD, IL 60148  
PHONE: 630.717.0726

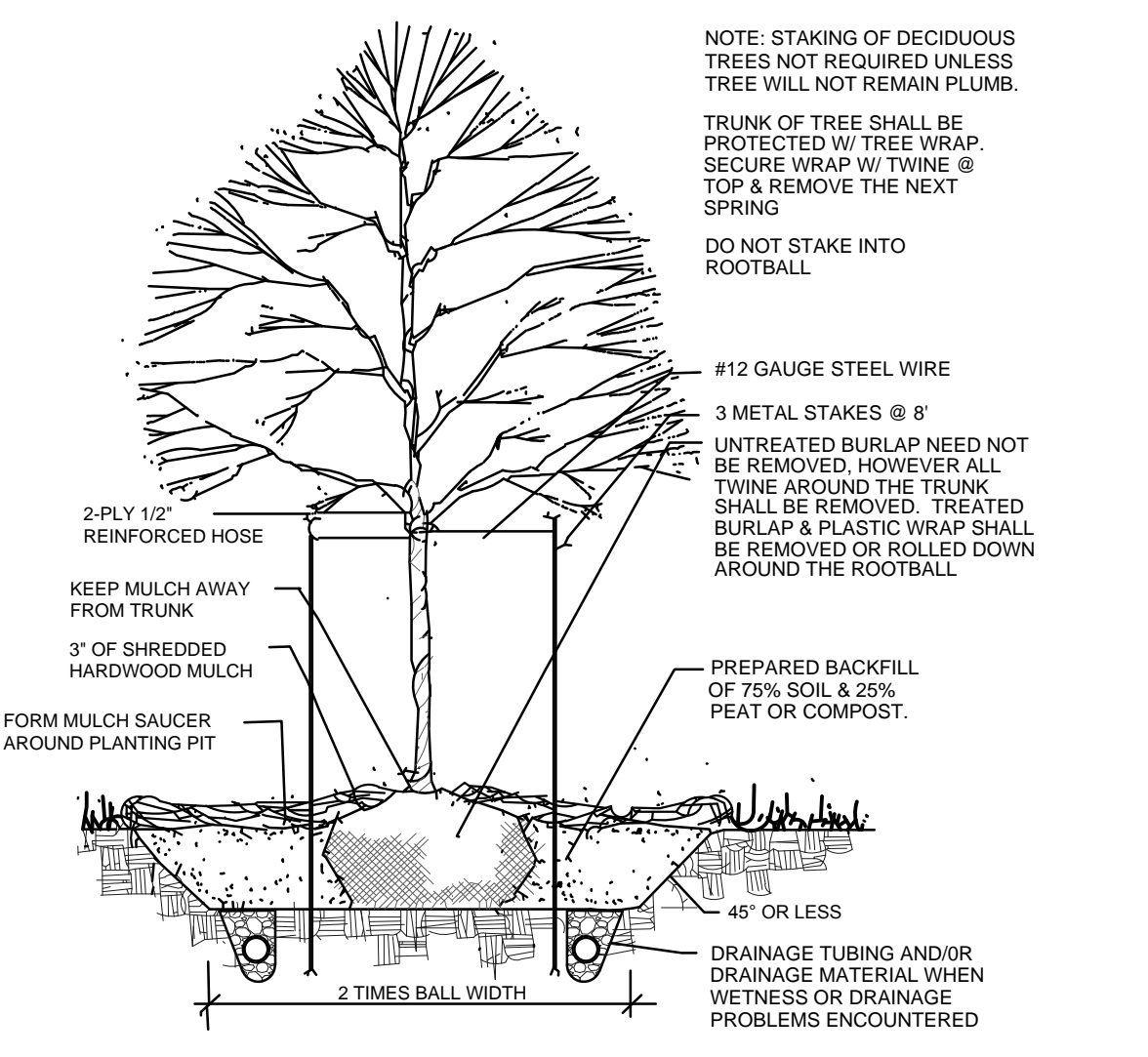
Landscape Architecture  
Park & Recreation Design  
Site & Community Planning  
www.ivesryangroup.com

**LANDSCAPE PLAN LOT 7A**

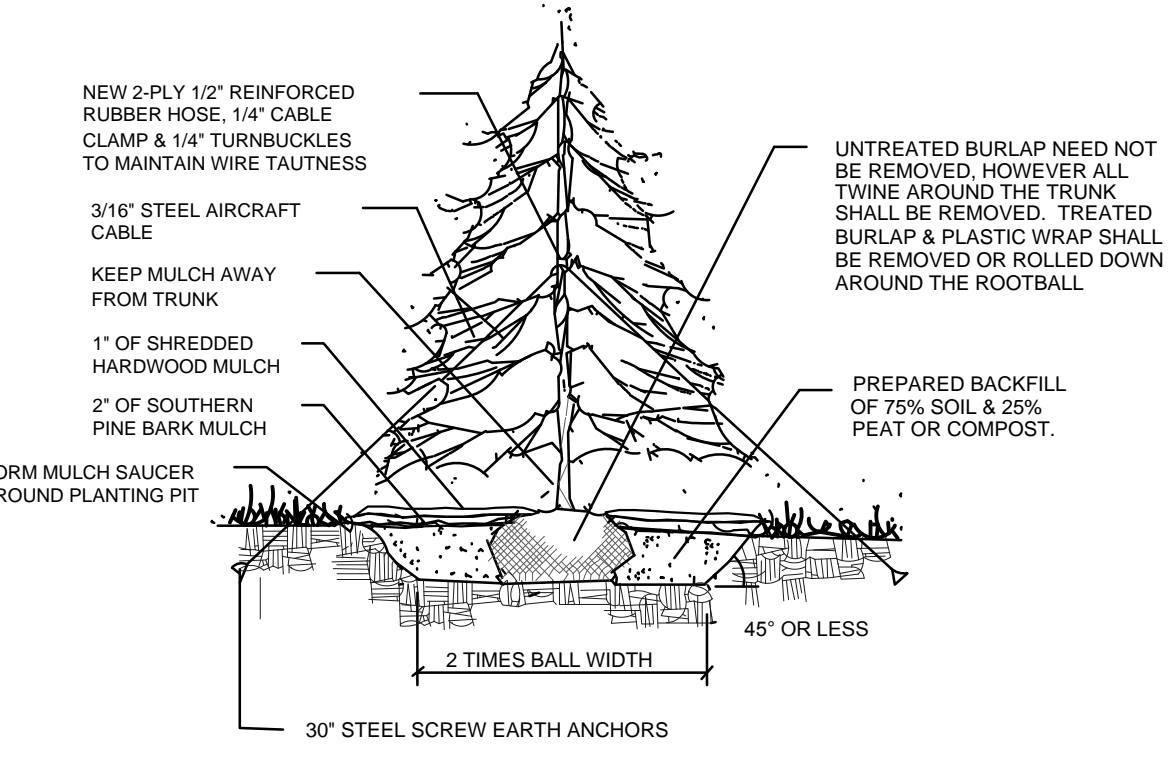
PROJECT NO.: L615 JOB NO.: 8732A

DATE: 5/5/15  
SCALE: 1"=40'  
PLANNER: RM  
DRAWN BY: RM  
CHECKED: \_\_\_\_\_

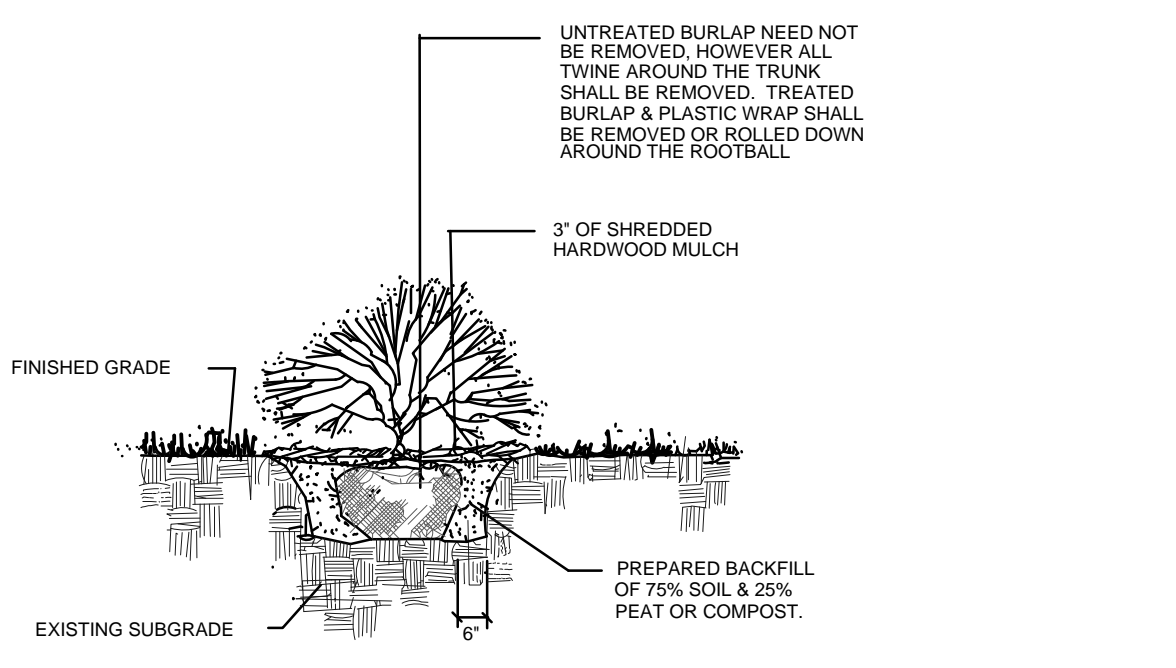
**SHEET L-3**



**DECIDUOUS TREE**

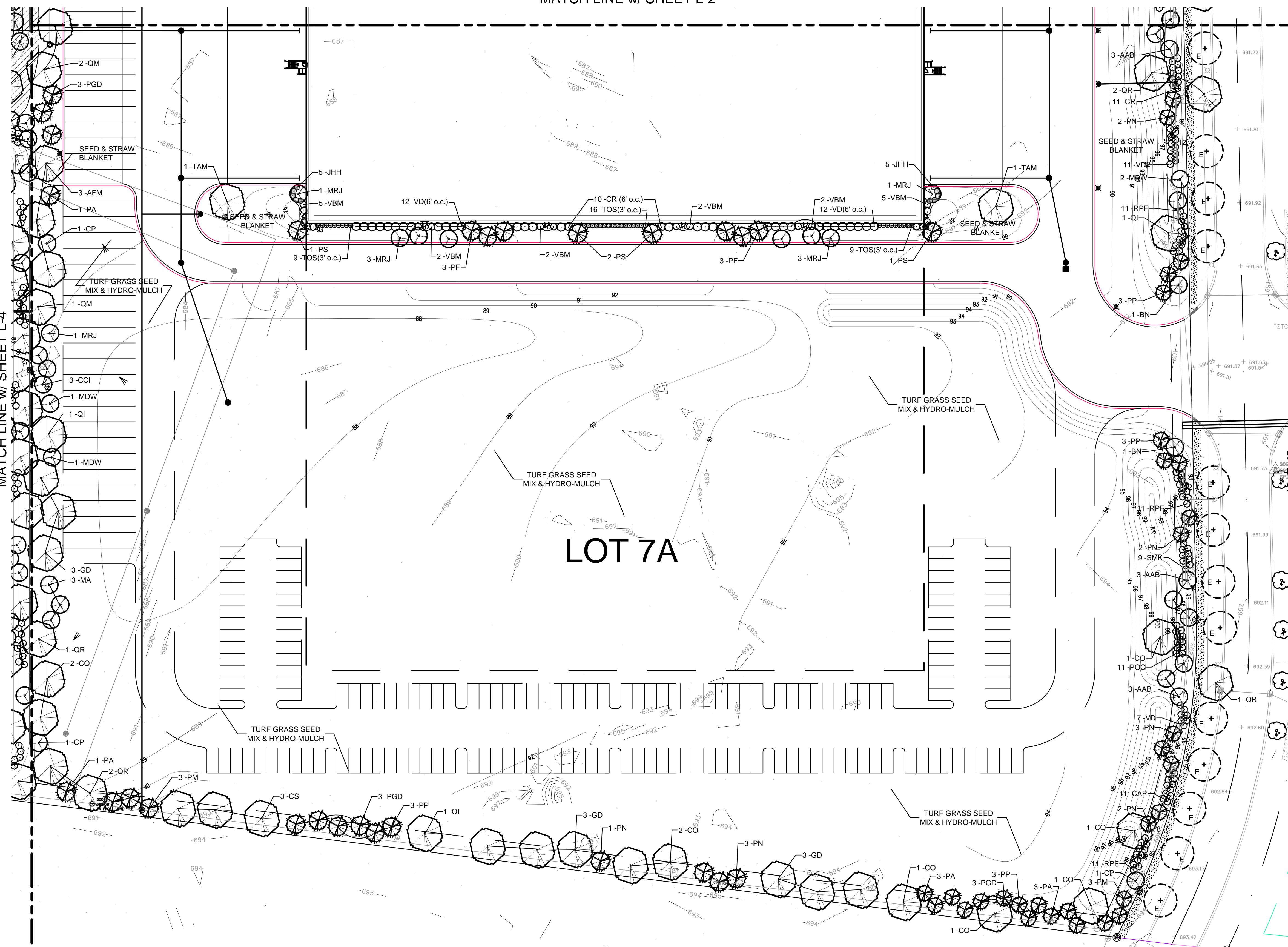


**EVERGREEN TREE**



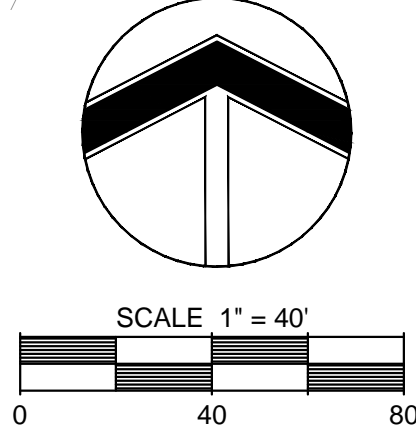
**SHRUBS**

MATCH LINE w/ SHEET L-4



**LEGEND**

- Proposed 2.5" cbr. - Shade Tree
- Proposed 6" cbr. - Evergreen Tree
- Proposed 2.5" cbr. or 8" cbr. - Understory Tree
- Proposed 30" to 36" - Deciduous Shrub
- Proposed 18" - Deciduous Shrub
- Proposed 18" to 24" - Evergreen Shrub

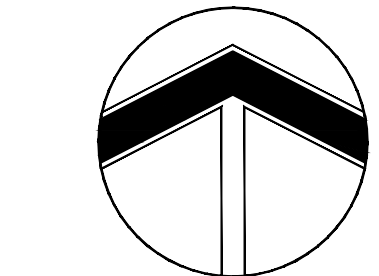
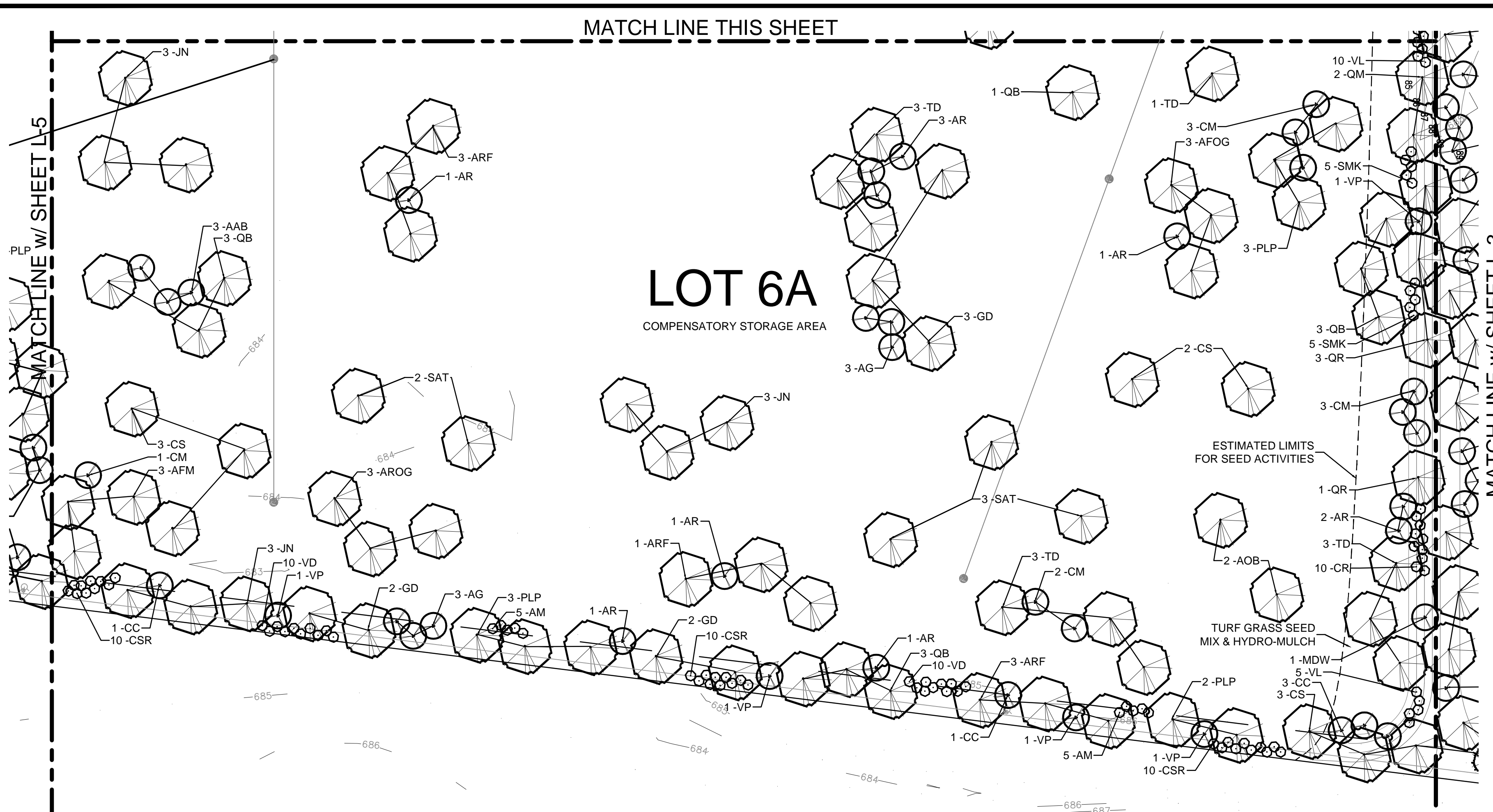


**CALL JULIE**  
48 HOURS  
BEFORE YOU DIG  
1-800-892-0123  
TOLL FREE  
Operates 24 Hours  
Every Day



MATCH LINE THIS SHEET

MATCHLINE w/ SHEET L-5

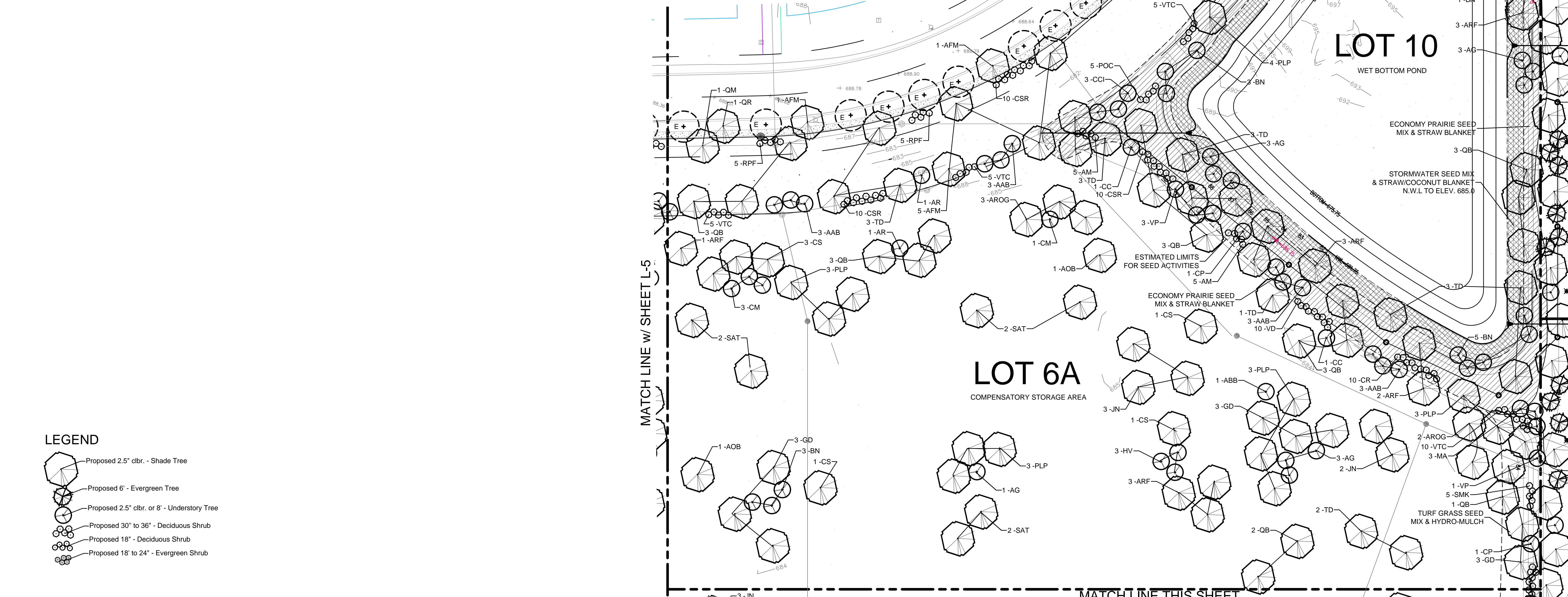


SCALE 1" = 40'

CALL JULIE 48 HOURS BEFORE YOU DIG 1-800-892-0123 TOLL FREE

MATCHLINE w/ SHEET L-3

- LEGEND
- Proposed 2.5" cbr. - Shade Tree
  - Proposed 6" - Evergreen Tree
  - Proposed 2.5" cbr. or 8" - Understory Tree
  - Proposed 30" to 36" - Deciduous Shrub
  - Proposed 18" - Deciduous Shrub
  - Proposed 18" to 24" - Evergreen Shrub



© 2015 Ives/Ryan Group, Inc. Copyright 2015 Ives/Ryan Group, Inc., all rights reserved.

**REVISIONS**

3 City Review Comments	7-21-15
2 Revised base	7-6-15
1 For Permit	7-1-15

**DEERPATH COMMERCE CENTER**  
Aurora, Illinois

OWNER:  
AURORA CHRISTIAN SCHOOL  
2255 Sullivan Road  
Aurora, IL 60506

**IRG** Ives/Ryan Group, Inc.  
324 EISENHOWER LANE N.  
LOMBARD, IL 60148  
PHONE: 630.717.0726

Landscape Architecture  
Park & Recreation Design  
Site & Community Planning

www.ivesryangroup.com

**LANDSCAPE PLAN**  
**LOTS 6A & 10**

PROJECT NO.: **L615** JOB NO.: **8732A**  
DATE: 5/5/15  
SCALE: 1"=40'  
PLANNER: RM  
DRAWN BY: RM  
CHECKED: RM

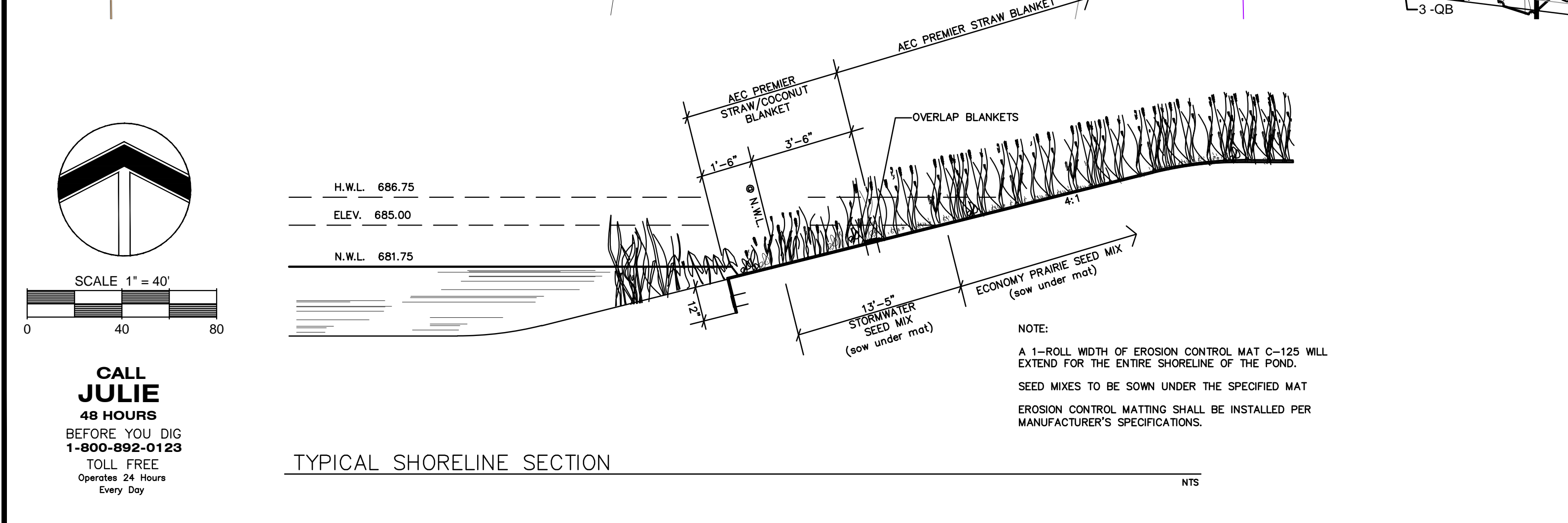
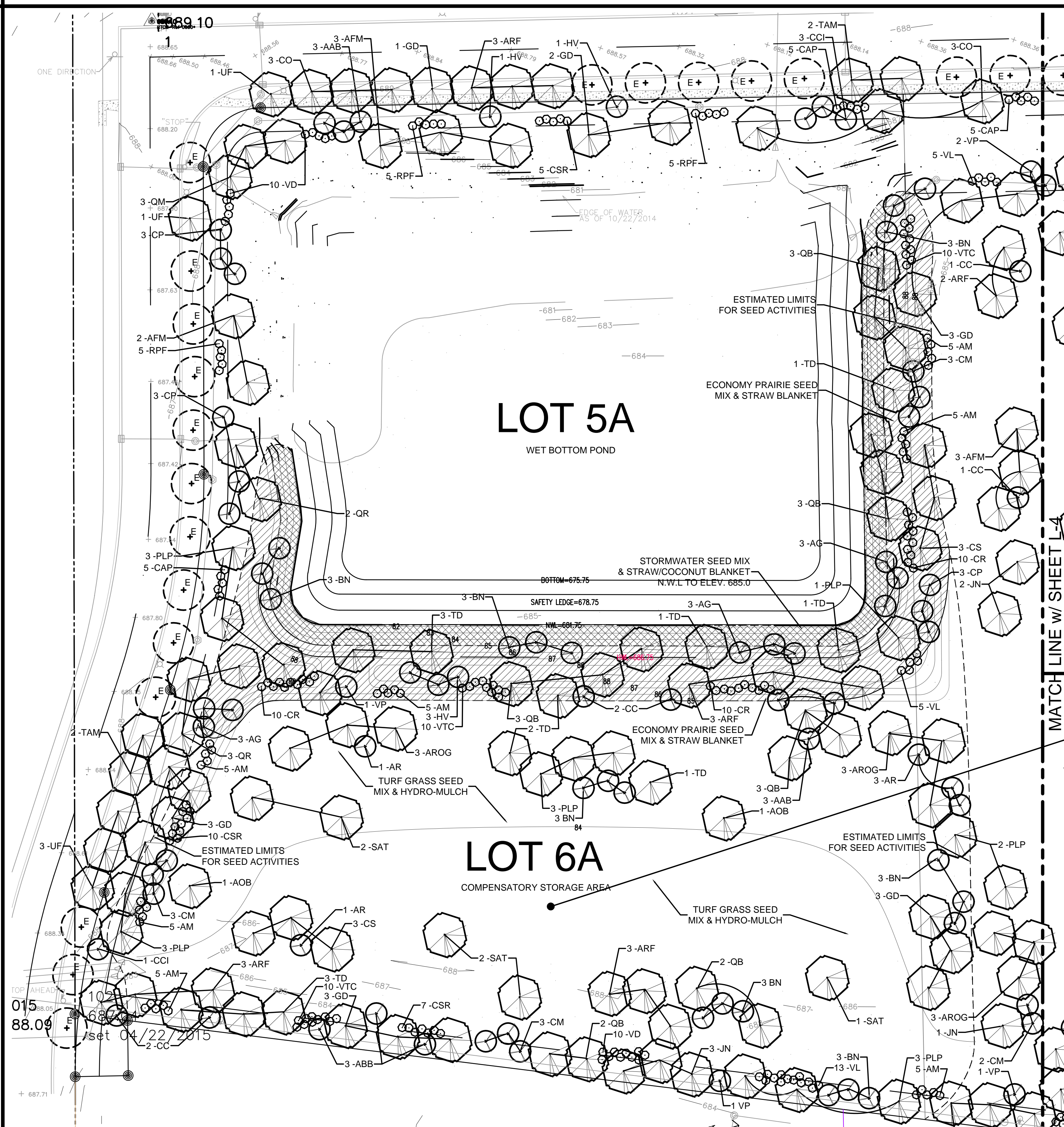
SHEET  
**L-4**

MATCHLINE w/ SHEET L-2

MATCHLINE w/ SHEET L-3

MATCHLINE THIS SHEET





**NATIVE AREA MAINTENANCE PROGRAM:**  
**NATIVE PRAIRIE AND POND SHORE**

The installing contractor shall provide a three (3) year maintenance program as part of the installation contract for all native prairie & native pond shorelines, bottom and banks. The installing contractor may subcontract the required maintenance program to a native plant community specialist contractor approved by the Landscape Architect and/or Owner.

- This program shall include:
- The Contractor shall be responsible for volunteer cattail control by way of wicking with Rodeo herbicide and/or burning for a period of five (5) years.
  - The Contractor shall be responsible for protecting the emergent aquatic plants from predators (e.g., geese, ducks) for a minimum of one (1) full growing season. Goose grids, mesh barriers, etc. shall be employed as the Contractor sees fit to insure development of an erect emergent plant community as specified on the drawings. Over planting to attain required minimum established quantities is suggested.

The Contractor shall be responsible for maintaining all predator protection systems for a minimum of one (1) full growing season (no less than seven (7) months confined to the months of April through October) or until a community is established to the minimum quantities required. The Warranty will not be waived due to predator feeding during this period.

- All areas specified for native wet/mesic, prairie and stormwater seed mixes shall be subject to a five (5) year maintenance contract by the installing Contractor. This work may be subcontracted but the subcontractor must be approved by the Landscape Architect and Owner. The Contractor will be responsible for prairie maintenance until Final Acceptance. This maintenance program shall consist of mowing, burning and selective herbicide control of invasive perennial weeds according to the schedule below.

Selective herbicide treatment of certain aggressive perennial weeds may be necessary during the 2nd & 3rd growing seasons if mowing and burning fail to control them. Such weeds include, but not limited to the following: Ambrosia artemisiifolia & trifida (Common & Giant Ragweed), Cirsium arvense (Canada Thistle), Dipsacus laciniatus (Cut-leaved Teasel), Dipsacus sylvestris (Common Teasel), Lythrum salicaria (Purple Loosestrife), Melilotus sp (Sweet Clover), Phalaris arundinacea (Reed Canary Grass), Phragmites australis (Giant Reed), Polygonum cuspidatum (Japanese Knotweed), Rhamnus cathartica & frangula (Common & Glossy Buckthorn)

Only careful contact application shall be performed. NO SPRAYING WILL BE ALLOWED. Control methods shall include:

- Direct hand application via 'herbicide glove' to the individual plant consisting of a rubber herbicide glove with large absorbent cotton gloves over the rubber glove. A strong solution of Round-up or other appropriate herbicide shall be mixed in a small non spill squirt or spray bottle. As needed, use the bottle to carefully saturate the cotton gloves(s) and then grab the leaves and stem of the unwanted perennial weed to apply the herbicide to that plant only. Take care not to touch or drip the herbicide on other adjacent plantings. Perform only on cool, non-windy days.

- Cut unwanted perennial weeds (esp. Canada Thistle) to the ground when they are one foot (1') or taller, but prior to flowering. The cut stumps should then be treated with undiluted Garlon-3 using a small plastic spray bottle set on "stream" rather than "spray" or "mist". The herbicide should be applied sparingly so that it just soaks the cut stem of the unwanted weed.

**1st Growing Season**

Mow up to three times (3X) to keep annual weed from going to seed and to avoid too much shade for young seedlings. Maintain between 6" & 12". NOTE: Burning should always be utilized in lieu of mowing when enough plant material fuel is available to conduct a burn.

**2nd Growing Season**

Mow in Spring to the ground and remove cuttings. Repeat mowing in late spring or early summer if weeds remain a problem. Target biennial weeds by mowing to six inches (6") when in bloom. Sweet Clover in particular must be mowed if present. Mowing in full bloom (mid-summer) will kill it. Native species shall be allowed to seed. Selective herbicide application of perennial weeds shall be performed in accordance with the provisions of Item No. 3 above.

NOTE: Burning should always be utilized in lieu of mowing when enough plant matter fuel is available to conduct a burn.

**3rd to 5th Growing Seasons**

Burn between October 15 and May 1, with a mid spring burning being preferred, and continue other weed management practices as needed during the 3rd growing season. (NOTE: The Contractor shall be responsible for all required permits for all burning.)

**PLANT LIST - LOT 1 (DETENTION POND)**

KEY	QTY	BOTANICAL NAME	COMMON NAME	SIZE/TYPE
<b>DECIDUOUS SHADE TREES</b>				
ARF	3	Acer r. 'Franksred'	Red Sunset Red Maple	2.5" BB
CO	2	Celtis occidentalis	Hackberry	2.5" BB
GTS	6	Gleditsia t. 'Skyline'	Skyline Honeylocust	2.5" BB
QB	8	Quercus bicolor	Swamp White Oak	2.5" BB
QM	3	Quercus muehlenbergi	Chinkapin Oak	2.5" BB
TD	3	Taxodium distichum	Bald Cypress	2.5" BB

AG	AAB	BN	CCI	CP	HV
6	6	10	3	5	2
Alnus glutinosa	Amelanchier b. 'Autumn Brilliance'	Betula nigra	Crataegus c. inermis	Crataegus phaenopynum	Hamamelis virginiana
European Black Alder	Autumn Brilliance Serviceberry	River Birch	Thornless Cocksbur Hawthorn	Washington Hawthorn	Common Witchhazel
8" BBd	8" BBd	8" BBd	8" BBd	8" BBd	8" BBd

155	90	50	185	90	185	50	650	50	90
Carex comosa	Carex lacustris	Hibiscus moscheutos	Iris virginica shrevel	Pontederia cordata	Sagittaria latifolia	Saururus cernuus	Scirpus acutus	Scirpus pungens	Sparganium eurycarpum
Bristly Sedge	Lake Sedge	Swamp Rose Mallow	Blue Flag Iris	Pickereel Weed	Common Arrowhead	Lizard's Tail	Hard-Stemmed Bulrush (in colony)	Chairmaker's Rush	Common Bur Reed
plugs	plugs	plugs	plugs	plugs	plugs	plugs	plugs	plugs	plugs

**MATERIAL & LABOR LIST:**

QTY	ITEM	DESCRIPTION
1070 SY	Native Seed	Stormwater Seed Mix By: Cardno/JFNew (or equal)
2955 SY	Native Seed	Economy Prairie Seed Mix By: Cardno/JFNew (or equal)
3560 SY	Erosion Control Blanket	AEC Premier Straw/Coconut Blanket (or equal)
465 SY	Erosion Control Blanket	AEC Premier Straw/Coconut Blanket (or equal)
8 CY	Mulch	Shredded Hardwood Bark

**ACCEPTANCE & GUARANTEE**

**NATIVE PRAIRIE & NATIVE POND SHORE & BANKS**

The Contractor shall be responsible for the satisfactory growth of permanent species of grasses, forbs, rushes, reeds and sedges on all areas seeded and/or planted under the Contract until final acceptance of the work. The Contractor shall conduct an inspection of the native planting areas during the 1st and 2nd growing seasons and provide the Owner & Village with a written assessment of the establishment progress and any remedial action taken or proposed by January 31st of the following year. A more detailed inspection shall be conducted at the end of the 3rd growing season and then again at the end of the 5th growing season for the purposes of Final Acceptance. A written report of this inspection shall also be provided to the Owner by Jan. 31st of the following year. Acceptance of the work will be determined using a time meander search. The time meander search shall be conducted at the end of the 3rd full growing season after seeding and again after the 5th season. The search will sample 20% of each plant community that was seeded and/or planted. If a minimum of 80% ground cover by native vegetation and a cumulative native floristic quality index (FQI) of 20 and a (C-) value of 3.5 or greater is achieved, the work will be approved. If not accepted, the Contractor will replant, to fulfill Contract responsibility, at no cost to the Owner.

**WET-MESIC TALLGRASS PRAIRIE SEED MIX**  
 Cardno/JFNew

BOTANICAL/ (COMMON) NAME	PLS OZ./Ac
Andropogon gerardii (Big Bluestem)	24.00
Calamagrostis canadensis (Bluejoint Grass)	1.00
Carex spp (Prairie Sedge Mix)	4.00
Carex lurida (Bottlebrush Sedge)	2.00
Elymus virginicus (Virginia Wild Rye)	24.00
Panicum virgatum (Switch Grass)	2.00
Scirpus pendulus (Red Bulrush)	0.25
Sorghastrum nutans (Indian Grass)	6.00
Spartina pectinata (Prairie Cord Grass)	3.00
<b>TOTAL</b>	<b>66.25</b>

**PERMANENT MATRIX:**

Carex cristatella (Crested Oval Sedge)	1.00
Carex lurida (Bottlebrush Sedge)	2.00
Carex vulpinoidea (Brown Fox Sedge)	6.00
Elymus virginicus (Virginia Wild Rye)	12.00
Glyceria striata (Fowl Manna Grass)	1.25
Juncus effusus (Common Rush)	1.00
Juncus torreyi (Torrey's Rush)	0.25
Helenium oryzoides (Rice Cut Grass)	1.00
Panicum virgatum (Switch Grass)	8.00
Sorghastrum nutans (Indian Grass)	1.00
Scirpus atrovirens (Dark Green Bulrush)	1.00
Scirpus cyperinus (Wool Grass)	0.50
Scirpus fluviatilis (River Rush)	0.25
Scirpus validus (Great Bulrush)	5.00
<b>TOTAL</b>	<b>40.25</b>

**TEMPORARY COVER:**

Avena sativa (Seed Oats)	360.00
Lolium multiflorum (Annual Rye)	100.00
<b>TOTAL</b>	<b>460.00</b>

**FORBS:**

Alisma spp. (Water Plantain Mix)	4.25
Rudbeckia incarnata (Swamp Milkweed)	1.50
Bidens spp. (Bidens Mix)	2.00
Helenium autumnale (Sneezeweed)	2.00
Lycopus americanus (Common Water Horehound)	0.25
Milium ringens (Monkey Flower)	1.00
Penthorum sedoides (Ditch Stonewort)	0.50
Polygonum pennsylvanicum (Pinkweed)	4.00
Rudbeckia subtomentosa (Sweet Black-Eyed Susan)	1.00
Sagittaria latifolia (Common Arrowhead)	1.00
Senna hebecarpa (Wild Senna)	1.00
Thalictrum dasycarpum (Purple Meadow Rue)	2.00
<b>TOTAL</b>	<b>20.50</b>

© 2015 Ives/Ryan Group, Inc. Copyright 2015 Ives/Ryan Group, Inc., all rights reserved. The design and any and all ideas contained herein are the sole property of the Ives/Ryan Group, Inc. Reproduction of the design or concept embodied herein in any form, in whole or in part, without the consent of the Ives/Ryan Group, Inc. is prohibited.

**REVISIONS**

NO.	DESCRIPTION	DATE
3	City Review Comments	7-21-15
2	Revised base	7-6-15
1	For Permit	7-1-15

**DEERPATH COMMERCE CENTER**  
 Aurora, Illinois

**IRG Ives/Ryan Group, Inc.**  
 324 EISENHOWER LANE N. LOMBARD, IL 60148  
 PHONE: 630.717.0726

**Landscape Architecture Park & Recreation Design Site & Community Planning**  
 www.ivesryangroup.com

**OWNER:**  
**AURORA CHRISTIAN SCHOOL**  
 2255 Sullivan Road  
 Aurora, IL 60506

**LANDSCAPE PLAN LOTS 5A & 6A**

PROJECT NO.: **L615** JOB NO.: **8732A**

DATE: 5/5/15  
 SCALE: 1"=40'  
 PLANNER: RM  
 DRAWN BY: RM  
 CHECKED: \_\_\_\_\_

**SHEET L-5**

**CALL JULIE**  
 48 HOURS BEFORE YOU DIG  
 1-800-892-0123  
 TOLL FREE  
 Operates 24 Hours Every Day



© 2015 Ives/Ryan Group, Inc. Copyright 2015 Ives/Ryan Group, Inc., all rights reserved. The design and any and all ideas contained herein are the sole property of the Ives/Ryan Group, Inc. Reproduction of the design or concept embodied herein in any form, in whole or in part, without the consent of the Ives/Ryan Group, Inc. is prohibited.

**REVISIONS**

3 City Review Comments	7-21-15
2 Revised base	7-6-15
1 For Permit	7-1-15

**DEERPATH COMMERCE CENTER**  
Aurora, Illinois

**OWNER :**  
AURORA CHRISTIAN SCHOOL  
2255 Sullivan Road  
Aurora, IL 60506

**IRG** Ives/Ryan Group, Inc.  
324 EISENHOWER LANE N.  
LOMBARD, IL 60148  
PHONE: 630.717.0726

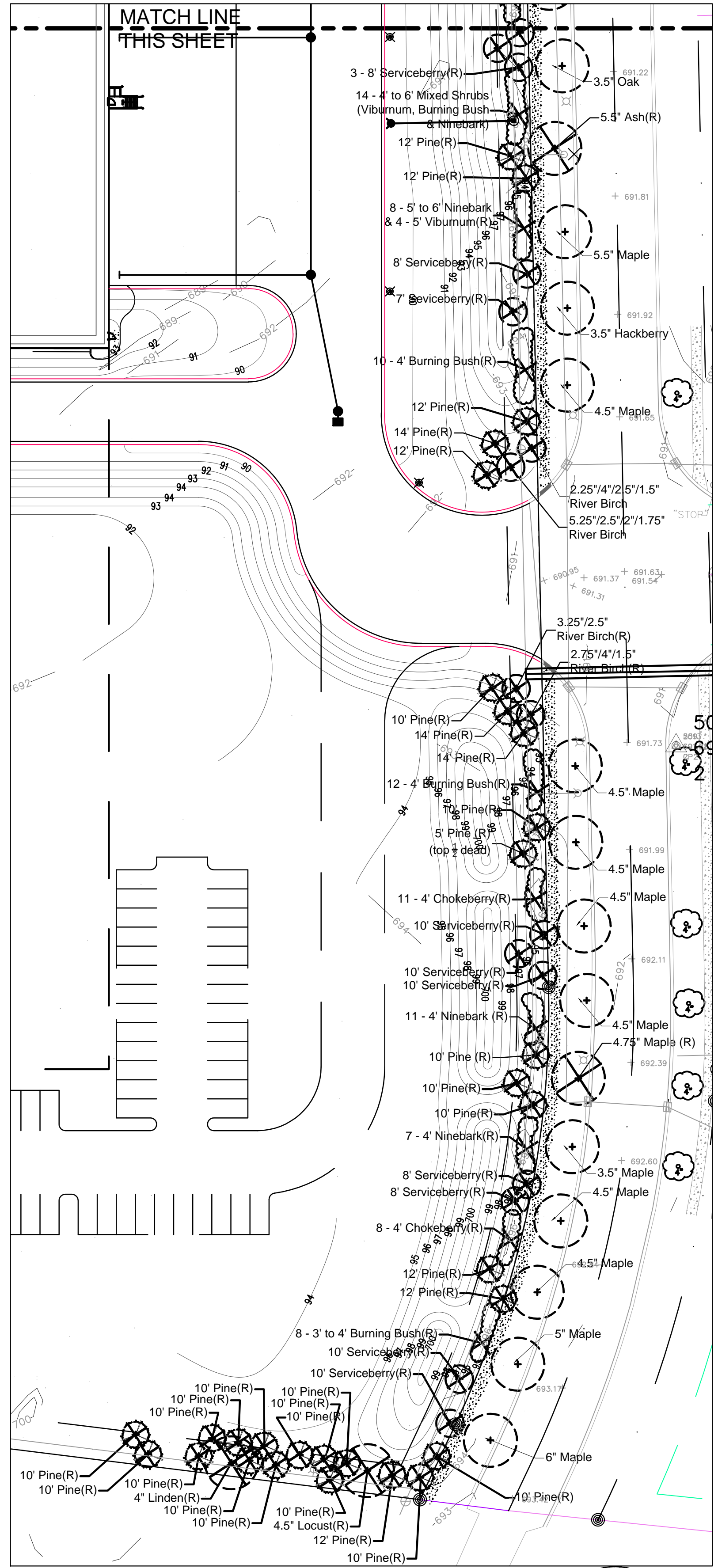
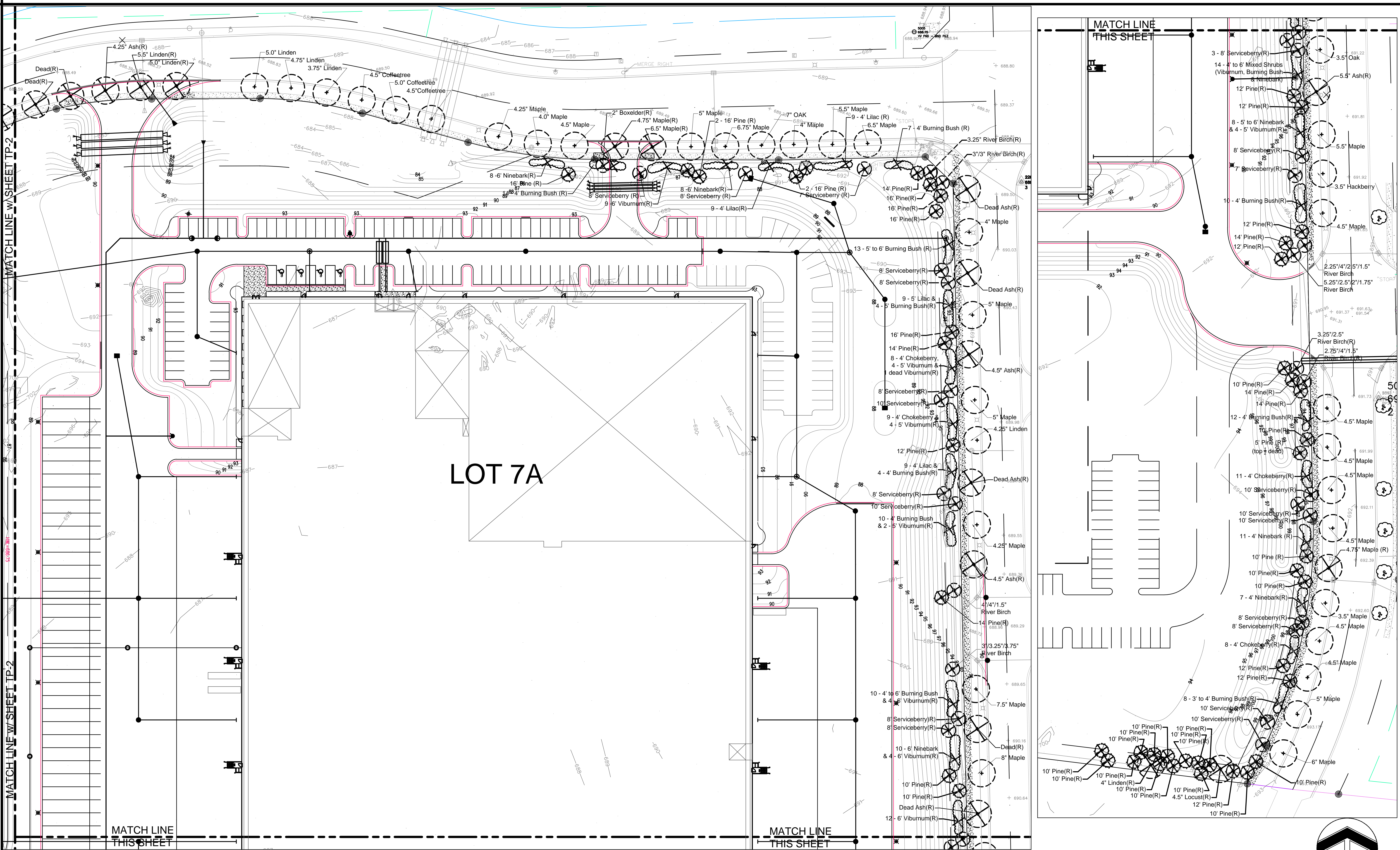
Landscape Architecture  
Park & Recreation Design  
Site & Community Planning  
www.ivesryangroup.com

**LOT 7A  
PRESERVATION  
& REMOVAL  
PLAN**

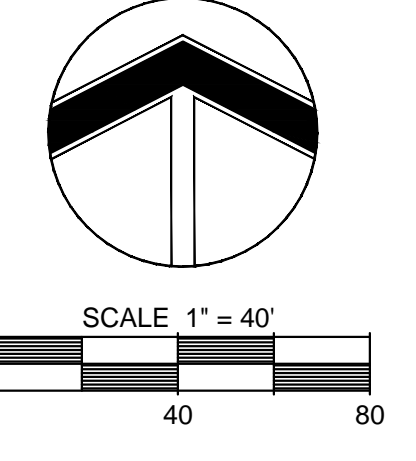
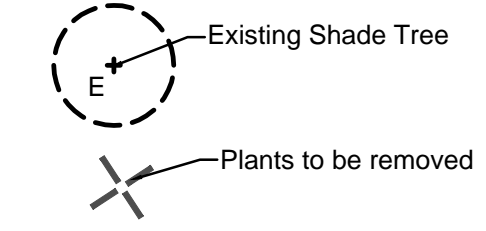
PROJECT NO.: **L615** JOB NO.: **8732A**

DATE: 5/5/15  
SCALE: 1"=40'  
PLANNER: RM  
DRAWN BY: RM  
CHECKED: \_\_\_\_\_

**SHEET  
TP-1**



**LEGEND**



**CALL  
JULIE**  
48 HOURS  
BEFORE YOU DIG  
1-800-892-0123  
TOLL FREE  
Operates 24 Hours  
Every Day



© 2015 Ives/Ryan Group, Inc. Copyright 2015 Ives/Ryan Group, Inc., all rights reserved. The design and any and all ideas contained herein are the sole property of the Ives/Ryan Group, Inc. Reproduction of the design or concept embodied herein in any form, in whole or in part, without the consent of the Ives/Ryan Group, Inc. is prohibited.

REVISIONS	
3 City Review Comments	7-21-15
2 Revised base	7-6-15
1 For Permit	7-1-15

## DEERPATH COMMERCE CENTER

Aurora, Illinois

OWNER:  
**AURORA CHRISTIAN SCHOOL**  
 2255 Sullivan Road  
 Aurora, IL 60506

**IRG** Ives/Ryan Group, Inc.  
 324 EISENHOWER LANE N.  
 LOMBARD, IL 60148  
 PHONE: 630.717.0726

Landscape Architecture  
 Park & Recreation Design  
 Site & Community Planning  
[www.ivesryangroup.com](http://www.ivesryangroup.com)

### LOTS 5A, 6A & 10 PRESERVATION & REMOVAL PLAN

PROJECT NO.: **L615** JOB NO.: **8732A**

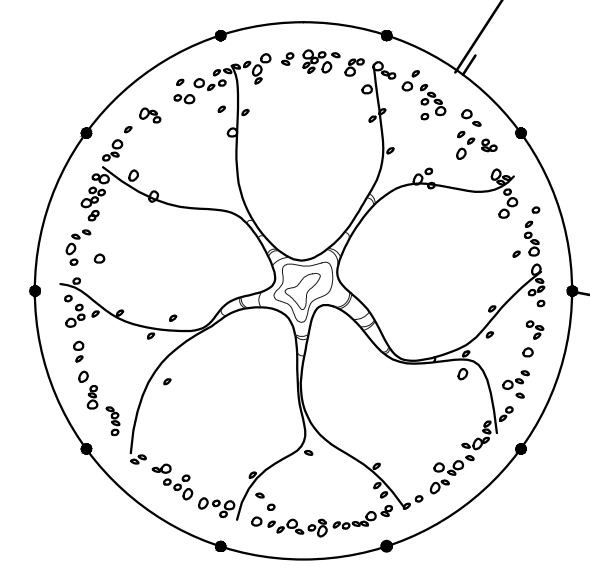
DATE: 5/5/15  
 SCALE: 1"=60'  
 PLANNER: RM  
 DRAWN BY: RM  
 CHECKED:  

### SHEET TP-2

ALL EXISTING LANDSCAPING NOTED FOR PRESERVATION, SHALL BE PROTECTED DURING CONSTRUCTION VIA PLASTIC SAFETY FENCING. FENCING SHALL BE 4' HIGH AND ATTACHED TO STEEL DRIVEN POSTS SET NO FARTHER THAN 8' O.C. IT SHALL BE INSTALLED AT THE PERIPHERY OF THE DRIP LINE OF EXISTING PLANT MATERIAL OR BEYOND TO PREVENT STORAGE OF VEHICLES OR MATERIALS AND THE ENCROACHMENT OF GRADING AND CONSTRUCTION EQUIPMENT.

CONSTRUCTION FENCING SHALL BE ERECTED PRIOR TO ANY GRADING OR CONSTRUCTION ACTIVITIES-PREVENTING COMPACTION OF ROOT SYSTEMS OF EXISTING TREES AND SHRUBS. THE FENCING SHALL ENCLOSE THE AREA BENEATH THE DRIP LINE OF THE TREE CANOPY AND SHALL REMAIN IN PLACE UNTIL ALL CONSTRUCTION IS COMPLETED. NO PARKING, MATERIAL STORAGE OR CONSTRUCTION ACTIVITIES SHALL BE PERMITTED WITHIN THE FENCED AREA.

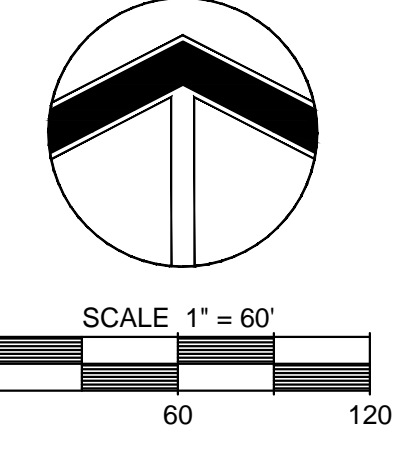
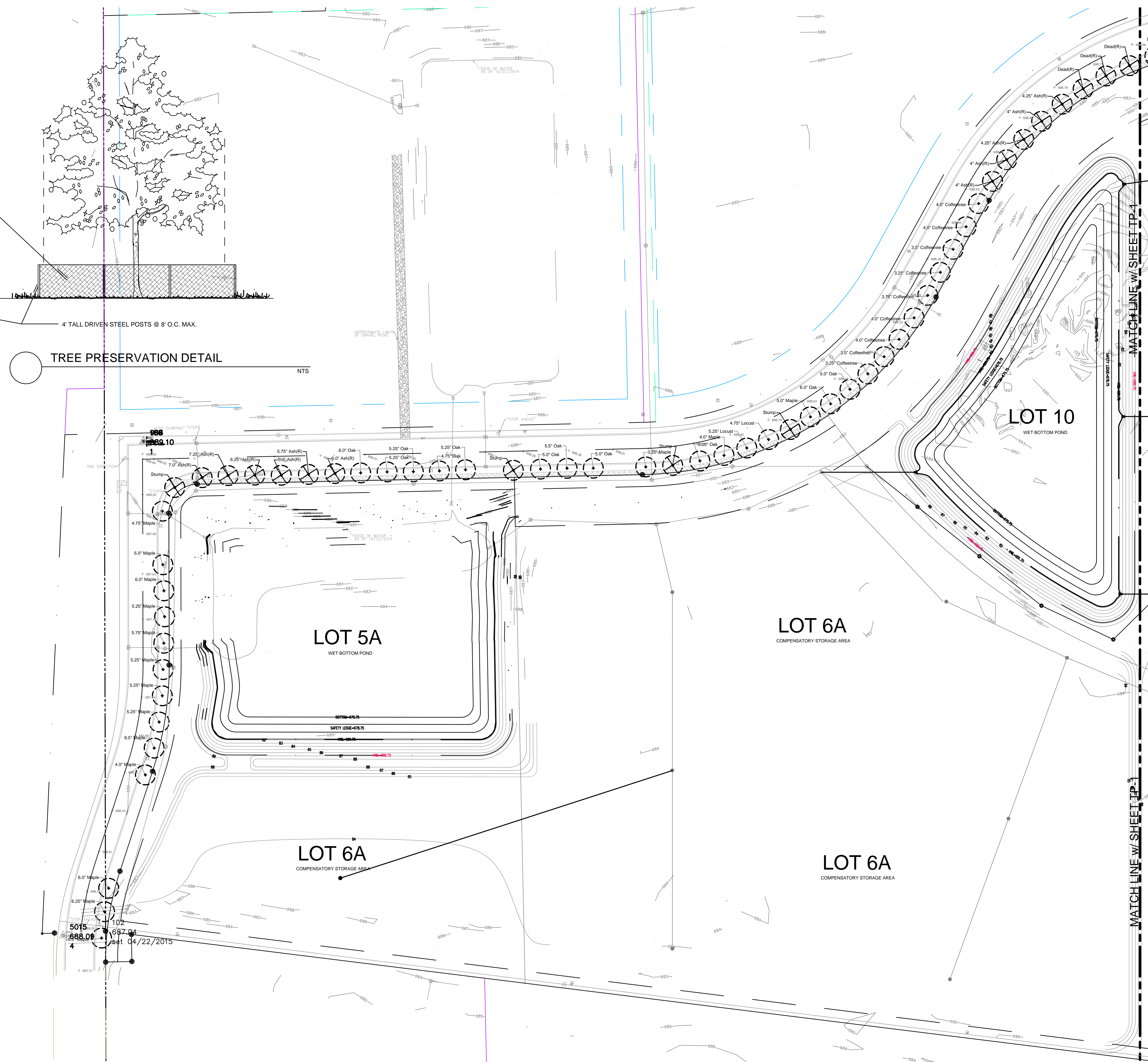
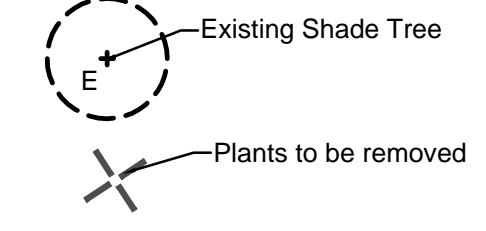
ORANGE POLYETHYLENE SAFETY FENCING  
 PLACED AT OR BEYOND DRIP-LINE



TREE PRESERVATION DETAIL

4 TALL DRIVEN STEEL POSTS @ 8' O.C. MAX.

#### LEGEND



**CALL JULIE**  
 48 HOURS  
 BEFORE YOU DIG  
 1-800-892-0123  
 TOLL FREE  
 Operates 24 Hours  
 Every Day