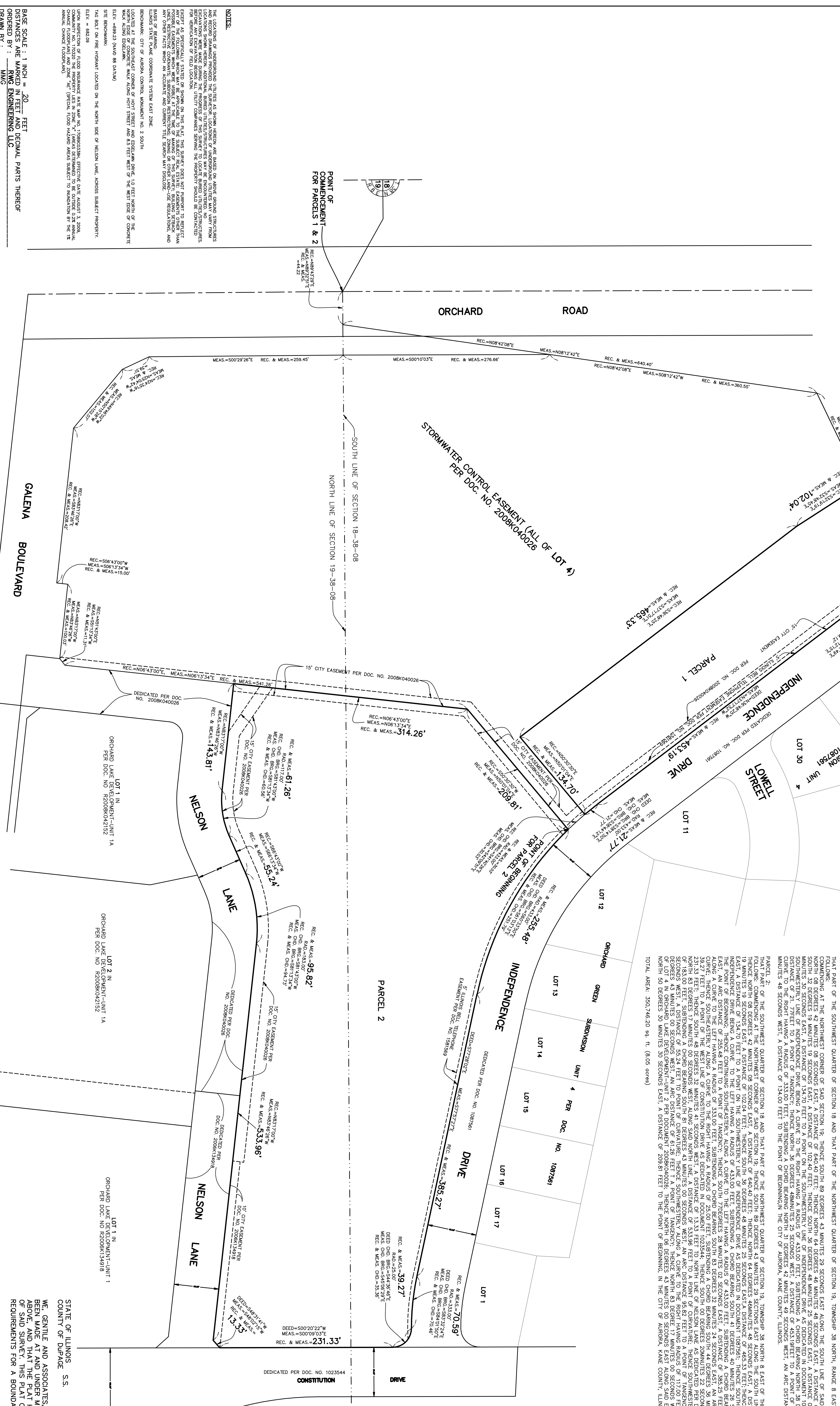
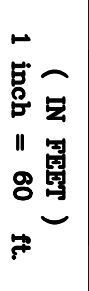


BOUNDARY AND TOPOGRAPHIC SURVEY

BY
GENTILE AND ASSOCIATES, INC.
 PROFESSIONAL LAND SURVEYORS

GRAPHIC SCALE
 (IN FEET)
 1 Inch = 60 Ft.



PARCEL 1:
 THAT PART OF THE SOUTHWEST QUARTER OF SECTION 18 AND THAT PART OF THE NORTHWEST QUARTER OF SECTION 19, TOWNSHIP 38 NORTH, RANGE 8 EAST OF THE THIRD PRINCIPAL MERIDIAN, DESCRIBED AS FOLLOWS: COMMENCING AT THE NORTHWEST CORNER OF SAID SECTION 19; THENCE SOUTH 89 DEGREES 43 MINUTES 29 SECONDS EAST ALONG THE SOUTH LINE OF SAID SECTION 18, A DISTANCE OF 44.22 FEET; THENCE NORTH 08 DEGREES 42 MINUTES 08 SECONDS EAST, A DISTANCE OF 640.40 FEET; THENCE NORTH 64 DEGREES 48 MINUTES 48 SECONDS EAST, A DISTANCE OF 136.16 FEET; THE POINT OF BEGINNING, THENCE NORTH 28 DEGREES 52 MINUTES 55 SECONDS WEST, A DISTANCE OF 254.48 FEET; THENCE SOUTH 38 DEGREES 50 SECONDS WEST, A DISTANCE OF 134.70 FEET; THE POINT OF BEGINNING, THENCE SOUTH 30 DEGREES WEST, A DISTANCE OF 134.70 FEET TO A POINT ON THE SOUTHWESTERLY LINE OF INDEPENDENCE DRIVE AS DEDICATED IN DOCUMENT 1087951; THENCE NORTHWESTERLY ALONG SAID SOUTHWESTERLY LINE OF INDEPENDENCE DRIVE BEING A CURVE TO THE RIGHT HAVING A RADIUS OF 433.00 FEET, SUBTENDING A CHORD BEARING NORTH 38 DEGREES 14 MINUTES 50 SECONDS WEST, AN ARC DISTANCE OF 255.48 FEET TO A POINT OF BEGINNING, THENCE SOUTH 50 DEGREES 55 SECONDS WEST, A DISTANCE OF 255.48 FEET TO A POINT OF BEGINNING, THENCE SOUTH 49 DEGREES 48 SECONDS WEST, A DISTANCE OF 134.00 FEET TO THE POINT OF BEGINNING IN THE CITY OF AURORA, KANE COUNTY, ILLINOIS.

PARCEL 2:
 THAT PART OF THE SOUTHWEST QUARTER OF SECTION 18 AND THAT PART OF THE NORTHWEST QUARTER OF SECTION 19, TOWNSHIP 38 NORTH & EAST OF THE THIRD PRINCIPAL MERIDIAN, DESCRIBED AS FOLLOWS: COMMENCING AT THE NORTHWEST CORNER OF SAID SECTION 19, THENCE SOUTH 89 DEGREES 43 MINUTES 29 SECONDS EAST ALONG THE SOUTH LINE OF SAID SECTION 18, A DISTANCE OF 44.22 FEET; THENCE NORTH 08 DEGREES 42 MINUTES 08 SECONDS EAST, A DISTANCE OF 640.40 FEET; THENCE NORTH 64 DEGREES 48 MINUTES 48 SECONDS EAST, A DISTANCE OF 136.16 FEET; THE POINT OF BEGINNING, THENCE NORTH 28 DEGREES 52 MINUTES 55 SECONDS WEST, A DISTANCE OF 254.48 FEET; THENCE SOUTH 38 DEGREES 50 SECONDS WEST, A DISTANCE OF 134.70 FEET; THE POINT OF BEGINNING, THENCE SOUTH 30 DEGREES WEST, A DISTANCE OF 134.70 FEET TO A POINT ON THE SOUTHWESTERLY LINE OF INDEPENDENCE DRIVE AS DEDICATED IN DOCUMENT 1087951; THENCE NORTHWESTERLY ALONG SAID SOUTHWESTERLY LINE OF INDEPENDENCE DRIVE BEING A CURVE TO THE RIGHT HAVING A RADIUS OF 433.00 FEET, SUBTENDING A CHORD BEARING NORTH 38 DEGREES 14 MINUTES 50 SECONDS WEST, AN ARC DISTANCE OF 255.48 FEET TO A POINT OF BEGINNING, THENCE SOUTH 50 DEGREES 55 SECONDS WEST, A DISTANCE OF 255.48 FEET TO A POINT OF BEGINNING, THENCE SOUTH 49 DEGREES 48 SECONDS WEST, A DISTANCE OF 134.00 FEET TO THE POINT OF BEGINNING IN THE CITY OF AURORA, KANE COUNTY, ILLINOIS.

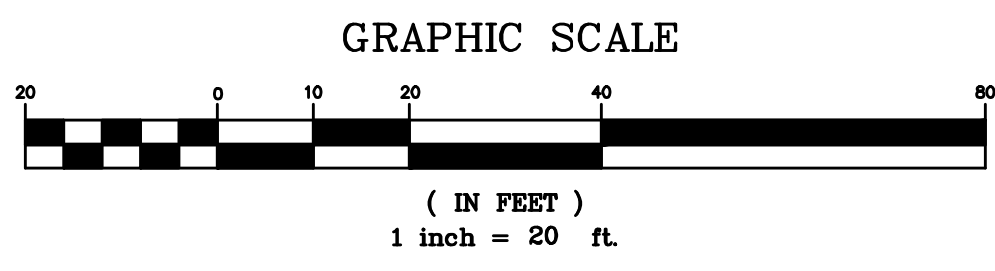
TOTAL AREA: 350,746.20 sq. ft. (8.05 acres)

NOTES:
 THE LOCATIONS OF UNDERGROUND UTILITIES AS SHOWN HEREON ARE BASED ON ABOVE GROUND STRUCTURES AND RECORD DRAWINGS PROVIDED. THE SURVEY LOCATIONS OF UNDERGROUND UTILITIES MAY VARY FROM LOCATIONS SHOWN ON RECORD DRAWINGS DUE TO SHIFTS OF THE UTILITIES DURING THE SURVEY. EXPLANATIONS WERE MADE DURING THE PROGRESS OF THIS SURVEY TO LOCATE BURIED UTILITIES/STRUCTURES, PER PERMISSION OF FIELD LOCATIONS. EXCEPT AS SPECIFICALLY STATED OR SHOWN ON THIS PLAN, THIS SURVEY DOES NOT PURPORT TO REFLECT ANY UNDERGROUND UTILITIES, STRUCTURES OR FEATURES OF ANY KIND, NOR DOES IT WARRANT ANY POSSIBILITY OF DAMAGES WHICH MAY BE INCURRED AT THE TIME OF MAINTENANCE OF THE SAME. BURIED UTILITIES, STRUCTURES AND FEATURES WHICH ARE NOT IDENTIFIED AS SUCH ARE SHOWN AS UNIDENTIFIED FEATURES. THIS SURVEY IS CONDUCTED IN ACCORDANCE WITH THE ILLINOIS PROFESSIONAL LAND SURVEYING ACT AND THE ILLINOIS PROFESSIONAL LAND SURVEYING BOARD REGULATIONS AND BASES OF REGULATION, ILLINOIS STATE PLANE COORDINATE SYSTEM EAST ZONE.
 BENCHMARK: CITY OF AURORA CONTROL MONUMENT NO. 2 SOUTH
 LOCATED AT THE SOUTHWEST CORNER OF HIGHT STREET AND EVERLAKE DRIVE, 1.0 FEET NORTH OF THE MAINLY ALONG EVERLAKE.
 ELEV. = 699.23 (NAVD 88 DATUM)
 SITE BENCHMARK:
 174.80 FT. ON FIRE INSURGENT LOCATED ON THE NORTH SIDE OF NELSON LAKE, ADJACENT SUBJECT PROPERTY.
 ELEV. = 682.09
 HIGH INSURANCE POLICY NO. 173038838, EXPIRING DATE AUGUST 3, 2008, COMMUNITY NO. 170303838, THE PROPERTY LIES IN ZONE "X" (WAS DETERMINED TO BE CONSIDERED 0.22 ANNUAL ANNUAL CHANCE FLOODING AND "X" (SPECIAL FLOOD HAZARD AREAS SUBJECT TO INUNDATION BY THE 1% ANNUAL CHANCE FLOODING).
 BASE SCALE : 1 INCH = 20 FEET
 DISTANCES ARE MARKED IN FEET AND DECIMAL PARTS THEREOF
 ORDERED BY : MNO ENGINEERING LLC
 DRAWN BY : LR-JS
 CHECKED BY : LR-JS

COMPARE ALL POINTS BEFORE BUILDING BY SAME AND AT ONCE REPORT ANY DIFFERENCE FOR BUILDING LINE AND OTHER RESTRICTIONS NOT SHOWN HEREON REFER TO YOUR ABSTRACT DEED, CONTRACT AND ZONING ORDINANCE.
 ORDER NO. 18-20937 REV 1
 NEXT GEN-AURORA
 SHEET 1 OF 5

NO.	DATE	DESCRIPTION	BY
1	06/26/2018	STAMP RE-RECORDED & NEW RECORD (SHEETS 2, 3 & 4)	MNO

STATE OF ILLINOIS
 COUNTY OF DUPage S.S.
 I, GENTILE AND ASSOCIATES, INC., HEREBY CERTIFY THAT A SURVEY HAS BEEN MADE AT AND UNDER MY DIRECTION OF THE PROPERTY DESCRIBED ABOVE, AND THAT THE PLAT HEREON DRAWN IS A CORRECT REPRESENTATION OF SAID SURVEY. THIS PLAT CONFORMS TO THE MINIMUM STANDARD REQUIREMENTS FOR A BOUNDARY SURVEY.
 JUNE 14, A.D. 2018



BOUNDARY AND TOPOGRAPHIC SURVEY

BY
GENTILE AND ASSOCIATES, INC.
PROFESSIONAL LAND SURVEYORS

550 E. ST. CHARLES PLACE
LOMBARD, ILLINOIS 60148
PHONE : (630) 916-6262

P.I.N.: 15-18-301-008
15-18-301-033
15-18-301-034
15-18-301-035
15-19-126-016
15-19-126-023

STORM SEWER STRUCTURES

- 41) CURB CATCH BASIN
FLOW LINE = 681.19
6" VCP NW INV=677.69
- 42) CURB CATCH BASIN
FLOW LINE = 681.06
6" PVC NE INV=677.61
- 43) CURB CATCH BASIN
FLOW LINE = 682.86
8" PVC W INV=678.39
- 44) STORM SEWER MH
RIM = 683.29
12" RCP N INV=678.09
12" RCP S INV=678.09
15" RCP E INV=678.59
- 45) STORM SEWER MH
RIM = 683.44
12" RCP N INV=678.08
15" RCP S INV=677.92
- 46) CURB CATCH BASIN
(LOCATION NOT GOOD)
- 47) CURB CATCH BASIN
FLOW LINE = 681.90
48" RCP E INV=675.31
15" RCP S INV=677.55
48" RCP W INV=675.00
- 48) STORM SEWER MH
RIM = 682.96
15" RCP N INV=676.49
48" RCP S INV=678.09
48" RCP SW INV=674.87
- 49) CATCH BASIN
RIM = 681.57
48" RCP NE INV=674.47
48" RCP NW INV=673.97
12" RCP N INV=NOT ACCESSIBLE
- 50) CURB INLET
FLOW LINE=681.25
12" RCP S INV=678.22
- 51) STORM SEWER MH
RIM = 681.99
48" RCP SE INV=NOT ACCESSIBLE
48" RCP NW INV=673.64
- 52) STORM SEWER MH
RIM = 682.81
48" RCP SE INV=673.61
48" RCP NW INV=673.41

SANITARY SEWER STRUCTURES

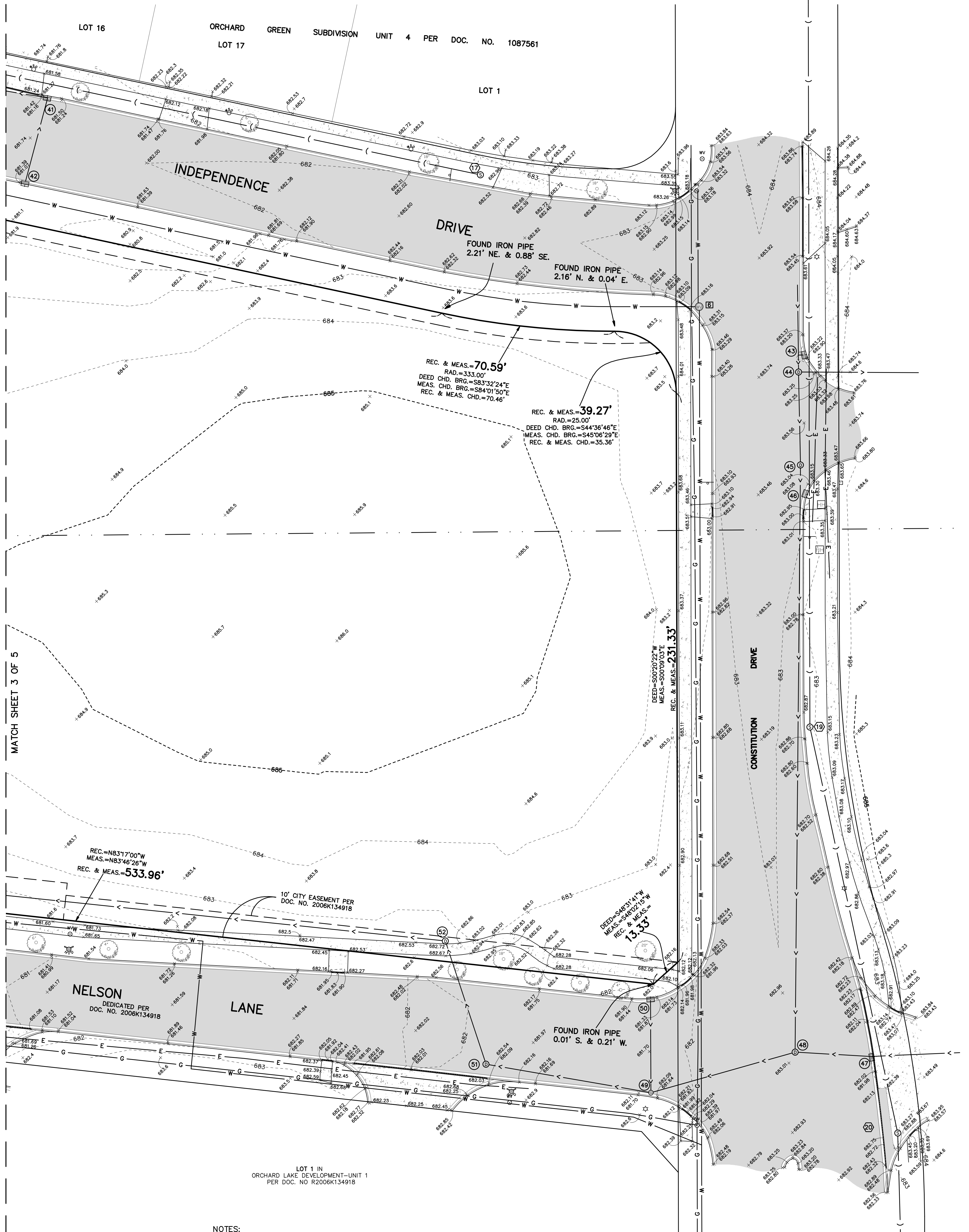
- 17) SANITARY SEWER MH
RIM = 682.80
8" VCP NW INV=674.34
- 18) SANITARY SEWER MH
RIM = 684.97
8" PVC N INV=674.70
8" PVC S INV=674.67
- 19) SANITARY SEWER MH
RIM = 682.97
8" PVC N INV=673.17
8" VCP SE INV=672.97
- 20) SANITARY SEWER MH
RIM = 682.78
8" VCP NW INV=672.38
8" VCP S INV=672.18

WATER VALVE VAULTS

- 6) WATER VALVE VAULT
RIM = 683.14
TOP OF 8" PIPE=677.09

LEGEND

- XXX.X TREE WITH TRUNK DIAM. SIZE
- STORM SEWER
- UNDERGROUND ELECTRIC
- GAS MAIN
- WATER MAIN
- SANITARY SEWER
- XXX.X GROUND ELEVATION
- XXX.XX PAVEMENT ELEVATION
- TELEPHONE SERVICE VAULT
- UTILITY PEDESTAL
- ☆ LIGHT STANDARD
- SIGN POST
- CLOSED COVER DRAINAGE STRUCTURE
- FIRE HYDRANT
- OPEN COVER DRAINAGE STRUCTURE
- SANITARY SEWER MANHOLE
- FIBER OPTIC HAND HOLE
- C.C. CLEANOUT
- GAS SERVICE SHUTOFF VALVE
- WATER SHUTOFF VALVE WITH B" CASING
- CURB INLET/CATCH BASIN
- CONCRETE PAVEMENT
- ASPHALT PAVEMENT



NOTES:

THE LOCATIONS OF UNDERGROUND UTILITIES AS SHOWN HEREON ARE BASED ON ABOVE GROUND STRUCTURES AND RECORD DRAWINGS PROVIDED THE SURVEYOR. LOCATIONS OF UNDERGROUND UTILITIES MAY VARY FROM LOCATIONS SHOWN HEREON. ADDITIONAL BURIED UTILITIES/STRUCTURES MAY BE ENCOUNTERED. NO EXCAVATIONS WERE MADE DURING THE PROGRESS OF THIS SURVEY TO LOCATE BURIED UTILITIES/STRUCTURES. BEFORE ANY EXCAVATION BEGINS ALL UTILITY COMPANIES SERVING THE PROPERTY SHOULD BE CONTACTED FOR VERIFICATION OF FIELD LOCATION.

EXCEPT AS SPECIFICALLY STATED OR SHOWN ON THIS PLAT, THIS SURVEY DOES NOT PURPORT TO REFLECT ANY OF THE FOLLOWING WHICH MAY BE APPLICABLE TO THE SUBJECT REAL ESTATE: EASEMENTS OTHER THAN POSSIBLE EASEMENTS WHICH WERE VISIBLE AT THE TIME OF MAKING OF THIS SURVEY; BUILDING SETBACK LINES, RESTRICTIVE COVENANTS, SUBDIVISION RESTRICTIONS, ZONING OR OTHER LAND-USE REGULATIONS, AND ANY OTHER FACTS WHICH AN ACCURATE AND CURRENT TITLE SEARCH MAY DISCLOSE.

BASIS OF BEARING:
ILLINOIS STATE PLANE COORDINATE SYSTEM EAST ZONE.

BENCHMARK: CITY OF AURORA CONTROL MONUMENT NO. 2 SOUTH

LOCATED AT THE SOUTHEAST CORNER OF HOYT STREET AND EDGLAWN DRIVE, 1.0 FEET NORTH OF THE NORTH EDGE OF CONCRETE WALK ALONG HOYT STREET AND 8.5 FEET WEST OF THE WEST EDGE OF CONCRETE WALK ALONG EDGLAWN.

ELEV. = 699.23 (NAVD 88 DATUM)

SITE BENCHMARK:

TAG BOLT ON FIRE HYDRANT LOCATED ON THE NORTH SIDE OF NELSON LANE, ACROSS SUBJECT PROPERTY.

ELEV. = 682.09

UPON INSPECTION OF FLOOD INSURANCE RATE MAP NO. 17089C0338H, EFFECTIVE DATE AUGUST 3, 2009, COMMUNITY NO. 170320 THE PROPERTY LIES IN ZONE "X" (AREAS DETERMINED TO BE OUTSIDE 0.2% ANNUAL CHANCE FLOODPLAIN) AND ZONE "AE" (SPECIAL FLOOD HAZARD AREAS SUBJECT TO INUNDATION BY THE 1% ANNUAL CHANCE FLOODPLAIN).

ORDER NO. 18-20937-REV 1
NEXT GEN-AURORA
SHEET 2 OF 5

NO.	DATE	DESCRIPTION	BY
1	06/26/2018	STORM MH REMOVED & WWV REVISED (SHEETS 2, 3 & 4)	MMG

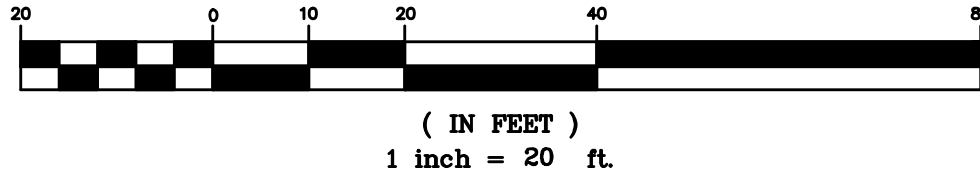
BOUNDARY AND TOPOGRAPHIC SURVEY

BY
GENTILE AND ASSOCIATES, INC.
PROFESSIONAL LAND SURVEYORS

550 E. ST. CHARLES PLACE
LOMBARD, ILLINOIS 60148
PHONE : (630) 916-6262

P.I.N.: 15-18-301-008
15-18-301-033
15-18-301-034
15-18-301-035
15-19-126-016
15-19-126-023

GRAPHIC SCALE



STORM SEWER STRUCTURES

- 3) CURB INLET
FLOW LINE = 681.92
12" RCP NW INV=678.16
- 4) CURB CATCH BASIN
FLOW LINE = 681.05
12" RCP SE INV=677.73
15" RCP NW INV=675.68
12" RCP SW INV=677.58
- 5) CURB INLET
FLOW LINE = 680.06
12" RCP NE INV=676.91
- 6) CURB CATCH BASIN
FLOW LINE = 680.11
12" RCP NE INV=676.30
12" RCP SW INV=676.26
- 7) CATCH BASIN
RIM = 681.08
12" RCP NE INV=675.93
21" RCP NW INV=675.50
15" RCP SE INV=676.58
- 8) STORM SEWER MH
RIM = 684.37
21" RCP SE INV=674.82
21" RCP NW INV=674.57
12" RCP S INV=677.23
- 9) STORM SEWER MH
RIM = 684.03
21" RCP SE INV=673.83
24" RCP SW INV=673.74
12" RCP SE INV=676.83
- 10) STORM SEWER MH
RIM = 679.60
48" RCP SE INV=668.75
48" RCP SW INV=668.65
- 11) STORM SEWER MH
RIM = 681.25
48" RCP SE INV=669.69
48" RCP NW INV=669.64
- 16) STORM SEWER MH
RIM = 681.69
15" RCP SE INV=675.74
15" RCP NW INV=675.74
- 17) CATCH BASIN
RIM = 680.98
21" RCP SE INV=675.03
21" RCP NW INV=674.98
- 18) STORM SEWER MH
RIM = 686.04
12" RCP S INV=677.71
12" RCP NW INV=677.60
- 19) STORM SEWER MH
RIM = 683.08
24" RCP NE INV=673.48
24" RCP SW INV=673.48
- 38) STORM SEWER MH
RIM = 679.66
NW & SW INV NOT ACCESSIBLE
6" PVC NE INV=676.16
10" RCP SE INV=675.88
- 39) CURB CATCH BASIN
FLOW LINE = 679.07
6" PVC 676.95
- 40) STORM SEWER MH
RIM = 680.23
10" RCP NW INV=677.38
SE INV=NOT ACCESSIBLE

SANITARY SEWER STRUCTURES

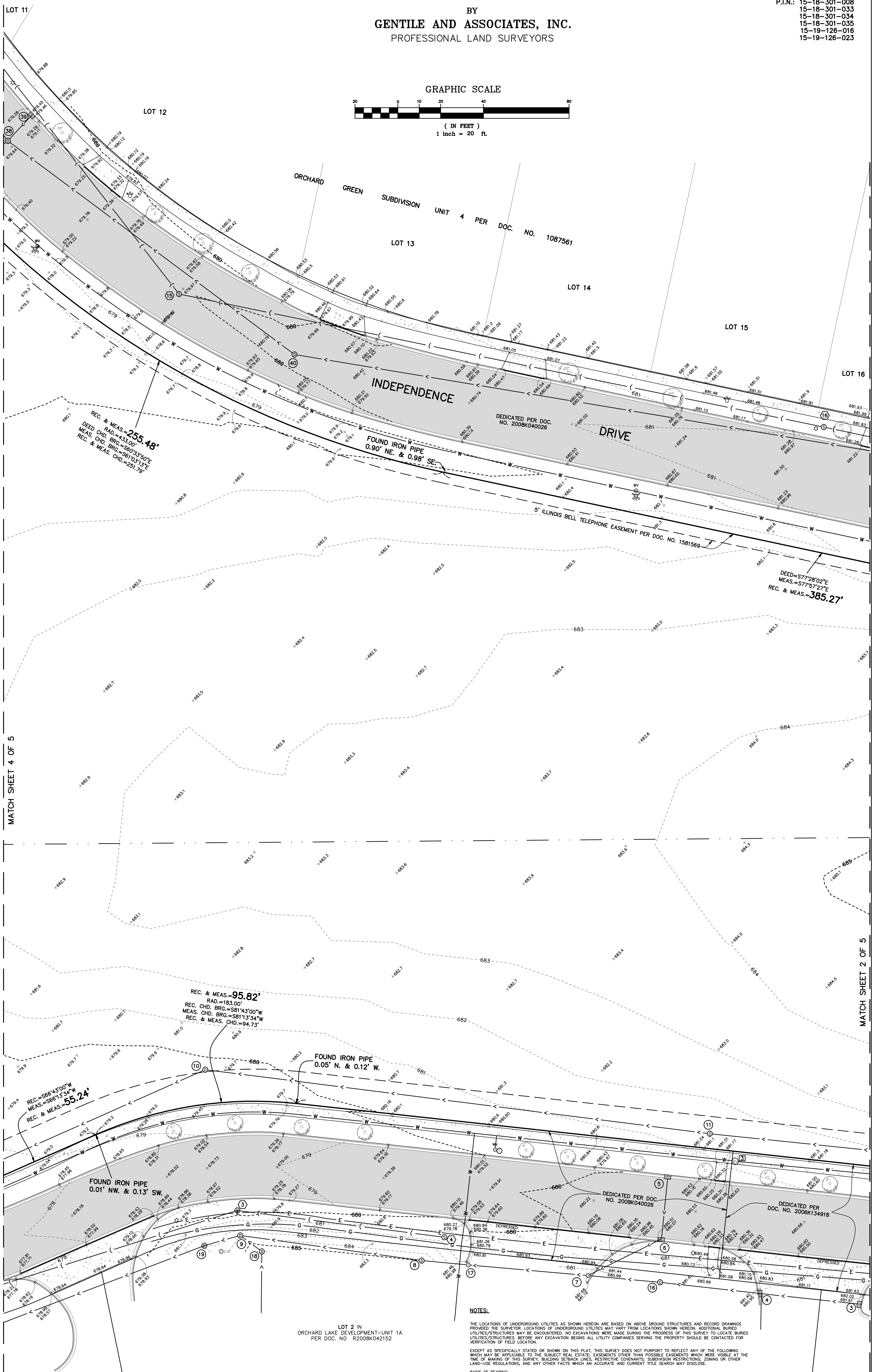
- 3) SANITARY SEWER MH
RIM = 679.01
8" PVC SE INV=669.66
8" PVC SW INV=669.76
- 4) SANITARY SEWER MH
RIM = 681.47
8" PVC E INV=670.57
8" PVC W INV=670.55
- 15) SANITARY SEWER MH
RIM = 679.93
8" VCP NW INV=672.18
8" VCP SE INV=672.08
- 16) SANITARY SEWER MH
RIM = 681.63
8" VCP NW INV=673.61
8" VCP SE INV=673.63

WATER VALVE VAULTS

- 3) WATER VALVE VAULT
RIM = 681.22
TOP OF 12" PIPE=676.17

LEGEND

- XX" TREE WITH TRUNK DIAM. SIZE
- STORM SEWER
- UNDERGROUND ELECTRIC
- GAS MAIN
- WATER MAIN
- SANITARY SEWER
- XXX.X GROUND ELEVATION
XXX.XX PAVEMENT ELEVATION
- TELEPHONE SERVICE VAULT
- UTILITY PEDESTAL
- ☆ LIGHT STANDARD
- SIGN POST
- CLOSED COVER DRAINAGE STRUCTURE
- ☆ FIRE HYDRANT
- OPEN COVER DRAINAGE STRUCTURE
- SANITARY SEWER MANHOLE
- FIBER OPTIC HAND HOLE
- c.o. CLEANOUT
- GAS SERVICE SHUTOFF VALVE
- WATER SHUTOFF VALVE WITH 8" CASING
- CURB INLET/CATCH BASIN
- CONCRETE PAVEMENT
- ASPHALT PAVEMENT



ORDER NO. 18-20937-REV 1
NEXT GEN-AURORA
SHEET 3 OF 5

NO.	DATE	DESCRIPTION	BY
1	06/26/2018	STORM MH REMOVED & WVV REVISED (SHEETS 2, 3 & 4)	MMG

NOTES:

THE LOCATIONS OF UNDERGROUND UTILITIES AS SHOWN HEREON ARE BASED ON ABOVE GROUND STRUCTURES AND RECORD DRAWINGS PROVIDED BY THE SURVEYOR. LOCATIONS OF UNDERGROUND UTILITIES SHOWN HEREON ARE NOT GUARANTEED. ADDITIONAL BURIED UTILITIES/STRUCTURES MAY BE ENCOUNTERED. NO EXCAVATIONS WERE MADE DURING THE PROGRESS OF THIS SURVEY TO LOCATE BURIED UTILITIES/STRUCTURES. BEFORE ANY EXCAVATION BEGINS ALL UTILITY COMPANIES SERVING THE PROPERTY SHOULD BE CONTACTED FOR VERIFICATION OF FIELD LOCATION.

EXCEPT AS SPECIFICALLY STATED OR SHOWN ON THIS PLAN, THIS SURVEY DOES NOT PURPORT TO REFLECT ANY OF THE FOLLOWING WHICH MAY BE APPLICABLE TO THE SUBJECT REAL ESTATE: EASEMENTS OTHER THAN POSSIBLE EASEMENTS WHICH WERE VISIBLE AT THE TIME OF MAKING OF THIS SURVEY; BUILDING SETBACK LINES, RESTRICTIVE COVENANTS, SUBDIVISION RESTRICTIONS, ZONING OR OTHER LAND-USE REGULATIONS, AND ANY OTHER FACTS WHICH AN ACCURATE AND CURRENT TITLE SEARCH MAY DISCLOSE.

BASIS OF BEARING: ILLINOIS STATE PLANE COORDINATE SYSTEM EAST ZONE.

BENCHMARK: CITY OF AURORA CONTROL MONUMENT NO. 2 SOUTH
LOCATED AT THE SOUTHEAST CORNER OF HOTT STREET AND EDGELAWN DRIVE, 1.0 FEET NORTH OF THE NORTH EDGE OF CONCRETE WALK ALONG HOTT STREET AND 8.5 FEET WEST OF THE WEST EDGE OF CONCRETE WALK ALONG EDGELAWN.
ELEV. = 699.23 (NAVD 88 DATUM)

SITE BENCHMARK:
TAG BOLT ON FIRE HYDRANT LOCATED ON THE NORTH SIDE OF NELSON LANE, ACROSS SUBJECT PROPERTY.
ELEV. = 682.09

UPON INSPECTION OF FLOOD INSURANCE RATE MAP NO. 1708900338H, EFFECTIVE DATE AUGUST 3, 2009, COMMUNITY NO. 170320 THE PROPERTY LIES IN ZONE "X" (AREAS DETERMINED TO BE OUTSIDE 0.2% ANNUAL CHANCE FLOODPLAIN) AND ZONE "AE" (SPECIAL FLOOD HAZARD AREAS SUBJECT TO INUNDATION BY THE 1% ANNUAL CHANCE FLOODPLAIN).



(IN FEET)
1 inch = 20 ft.



P.I.N.: 15-18-301-008
15-18-301-033
15-18-301-034
15-18-301-035
15-19-126-016
15-19-126-023

MATCH SHEET 5 OF 5

SANITARY SEWER STRUCTURES

- 6) SANITARY SEWER MH
RIM = 677.73
8" PVC NE INV=668.93
8" PVC W INV=668.93
- 7) SANITARY SEWER MH
RIM = 677.55
8" PVC E INV=667.55
8" PVC SE INV=662.45
14" PVC N INV=662.02
14" PVC S INV=661.95
- 8) SANITARY SEWER MH
RIM = 676.76
14" PVC S INV=662.56
14" PVC NE INV=662.61
- 9) SANITARY SEWER MH
RIM = 678.83
14" PVC SW INV=662.93
14" PVC NW INV=662.93

STORM SEWER STRUCTURES

- 20) STORM SEWER MH
RIM = 678.73
24" RCP NE INV=673.18
12" RCP SE INV=674.18
24" RCP W INV=673.18
- 21) STORM SEWER MH
RIM = 678.10
24" RCP E INV=672.65
15" RCP INV=672.50
24" RCP NW INV=672.55
- 22) STORM SEWER MH
RIM = 677.56
24" RCP E INV=NOT ACCESSIBLE
30" RCP S INV=670.26
30" RCP NE INV=670.16
- 23) CURB CATCH BASIN
FLOW LINE=676.85
12" RCP NE INV=673.36
15" RCP SE INV=673.26
- 24) CURB INLET
FLOW LINE=676.87
12" RCP SW INV=673.53
- 25) STORM SEWER MH
RIM = 678.51
48" RCP NE INV=667.76
48" RCP NW INV=667.66
- 26) STORM SEWER MH
RIM = 676.68
48" RCP SE INV=667.23
48" RCP NW INV=667.23
30" RCP SW INV=669.54
- 27) FLARED END SECTION
48" INV=665.75
- 28) FLARED END SECTION
24" INV=666.23
- 29) STORM SEWER MH
RIM = 676.89
24" RCP W INV=667.25
24" RCP NE INV=672.64
- 30) STORM SEWER MH
RIM = 677.30
24" RCP SW INV=673.65
18" RCP NE INV=673.80
- 31) CURB INLET
FLOW LINE = 678.79
18" RCP SW INV=675.48
18" RCP NE INV=675.48

WATER VALVE VAULTS

- 4) WATER VALVE VAULT
RIM = 677.18
FULL OF WATER
- 5) WATER VALVE VAULT
RIM = 677.13
TOP OF 12" PIPE=671.09

NOTES:

THE LOCATIONS OF UNDERGROUND UTILITIES AS SHOWN HEREON ARE BASED ON ABOVE GROUND STRUCTURES AND RECORD DRAWINGS PROVIDED THE SURVEYOR. LOCATIONS OF UNDERGROUND UTILITIES MAY VARY FROM LOCATIONS SHOWN HEREON. ADDITIONAL BURIED UTILITIES/STRUCTURES MAY BE ENCOUNTERED. NO EXCAVATIONS WERE MADE DURING THE PROGRESS OF THIS SURVEY TO LOCATE BURIED UTILITIES/STRUCTURES. BEFORE ANY EXCAVATION BEGINS ALL UTILITY COMPANIES SERVING THE PROPERTY SHOULD BE CONTACTED FOR VERIFICATION OF FIELD LOCATION.

EXCEPT AS SPECIFICALLY STATED OR SHOWN ON THIS PLAT, THIS SURVEY DOES NOT PURPORT TO REFLECT ANY OF THE FOLLOWING WHICH MAY BE APPLICABLE TO THE SUBJECT REAL ESTATE: EASEMENTS OTHER THAN POSSIBLE EASEMENTS WHICH WERE VISIBLE AT THE TIME OF MAKING OF THIS SURVEY; BUILDING SETBACK LINES; RESTRICTIVE COVENANTS; SUBDIVISION RESTRICTIONS; ZONING OR OTHER LAND-USE REGULATIONS; AND ANY OTHER FACTS WHICH AN ACCURATE AND CURRENT TITLE SEARCH MAY DISCLOSE.

BASIS OF BEARING:
ILLINOIS STATE PLANE COORDINATE SYSTEM EAST ZONE.

BENCHMARK: CITY OF AURORA CONTROL MONUMENT NO. 2 SOUTH

LOCATED AT THE SOUTHEAST CORNER OF HOYT STREET AND EDELAWN DRIVE, 1.0 FEET NORTH OF THE NORTH EDGE OF CONCRETE WALK ALONG HOYT STREET AND 8.5 FEET WEST OF THE WEST EDGE OF CONCRETE WALK ALONG EDELAWN.

ELEV. = 699.23 (NAVD 88 DATUM)

SITE BENCHMARK:

TAG BOLT ON FIRE HYDRANT LOCATED ON THE NORTH SIDE OF NELSON LANE, ACROSS SUBJECT PROPERTY.

ELEV. = 682.09

UPON INSPECTION OF FLOOD INSURANCE RATE MAP NO. 17089C0338H, EFFECTIVE DATE AUGUST 3, 2009, COMMUNITY NO. 170320 THE PROPERTY LIES IN ZONE "X" (AREAS DETERMINED TO BE OUTSIDE 0.2% ANNUAL CHANCE FLOODPLAIN) AND ZONE "AE" (SPECIAL FLOOD HAZARD AREAS SUBJECT TO INUNDATION BY THE 1% ANNUAL CHANCE FLOODPLAIN).

LEGEND

- TREE WITH TRUNK DIAM. SIZE
- STORM SEWER
- UNDERGROUND ELECTRIC
- GAS MAIN
- WATER MAIN
- SANITARY SEWER
- XXX.X GROUND ELEVATION
- XXX.XX PAVEMENT ELEVATION
- TELEPHONE SERVICE VAULT
- UTILITY PEDESTAL
- LIGHT STANDARD
- SIGN POST
- CLOSED COVER DRAINAGE STRUCTURE
- FIRE HYDRANT
- OPEN COVER DRAINAGE STRUCTURE
- SANITARY SEWER MANHOLE
- FIBER OPTIC HAND HOLE
- CLEANOUT
- GAS SERVICE SHUTOFF VALVE
- WATER SHUTOFF VALVE WITH 8" CASING
- CURB INLET/CATCH BASIN
- CONCRETE PAVEMENT
- ASPHALT PAVEMENT

ORDER NO. 18-20937-REV 1
NEXT GEN-AURORA
SHEET 4 OF 5

NO.	DATE	DESCRIPTION	BY
1	06/26/2018	STORM MH REMOVED & WV REVISED (SHEETS 2, 3 & 4)	MMG

STORMWATER CONTROL EASEMENT (ALL OF LOT 4)
PER DOC. NO. 2008K040026

EDGE OF WATER AS OF JUNE 14, 2018

15' CITY EASEMENT PER DOC. NO. 2008K040026
REC.=N06°43'00"E
MEAS.=108'13'34"E
REC. & MEAS.=314.26'

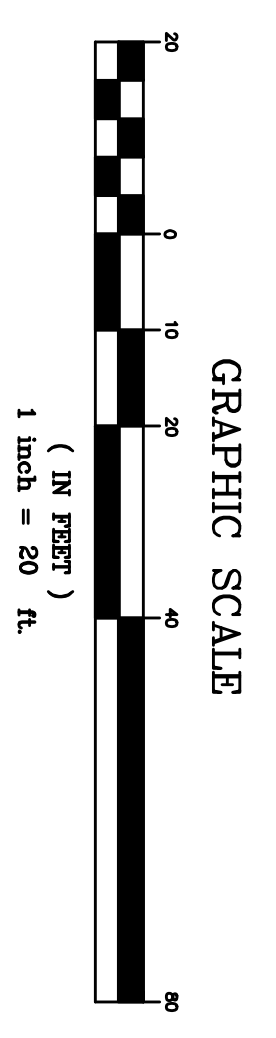
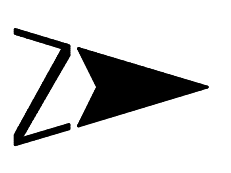
REC.=N83°17'00"W
MEAS.=N83°46'26"W
REC. & MEAS.=143.81'

REC. & MEAS.=61.26'
RAD.=117.00'
REC. CHD.=S81°43'00"W
MEAS. CHD.=S81°13'34"W
REC. & MEAS. CHD.=60.56'

DEDICATED PER
DOC. NO. 2008K040026

LOT 1 IN
ORCHARD LAKE DEVELOPMENT-UNIT 1A
PER DOC. NO. R2008K042152

MATCH SHEET 3 OF 5



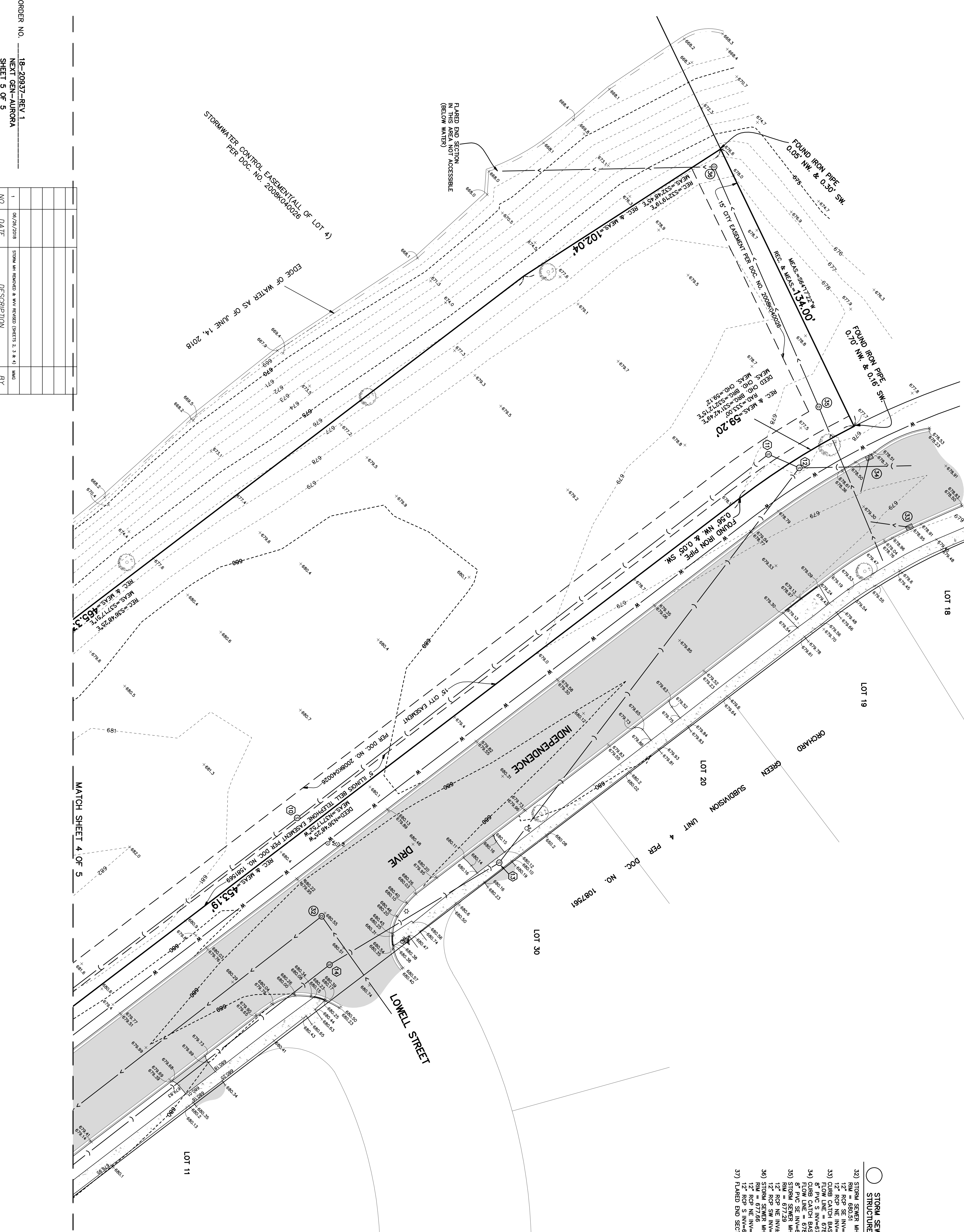
GRAPHIC SCALE
(IN FEET)
1 Inch = 20 Ft.

BOUNDARY AND TOPOGRAPHIC SURVEY

BY
GENTILE AND ASSOCIATES, INC.
PROFESSIONAL LAND SURVEYORS

550 E. ST. CHARLES PLACE
LOMBARD, ILLINOIS 60148
PHONE : (630) 916-6282

P.L.N.: 15-18-301-008
15-18-301-033
15-18-301-034
15-18-301-035
15-19-128-016
15-19-128-023



- STORM SEWER STRUCTURES
- STORM SEWER MH
- 32) STORM SEWER MH
R.M. = 680.39
- 12" RCP SE INV=676.69
- 12" RCP NE INV=676.75
- 33) CURB CATCH BASIN
R.M. = 677.87
- 8" PVC SE INV=683.57
- 8" M.C. INV=682.96
- 34) CURB CATCH BASIN
FLOW LINE = 678.40
- 8" PVC SE INV=675.50
- 8" RCP SE INV=675.50
- 35) STORM SEWER MH
R.M. = 677.23
- 12" RCP NE INV=673.39
- 12" RCP SW INV=673.29
- 36) TOWN SEWER MH
R.M. = 677.65
- 12" RCP NE INV=672.86
- 12" RCP S INV=666.81
- 37) FLARED END SECTION

- SANITARY SEWER STRUCTURES
- SANITARY SEWER MH
- 10) SANITARY SEWER MH
R.M. = 680.39
- 14" PVC SE INV=683.47
- 11) SANITARY SEWER MH
R.M. = 677.87
- 14" PVC SE INV=683.57
- 12) SANITARY SEWER MH
R.M. = 677.96
- 15" VCP SW INV=683.66
- 8" M.C. INV=677.96
- 15" VCP N INV=683.71
- 8" SANITARY SEWER MH
R.M. = 680.18
- 13) SANITARY SEWER MH
R.M. = 680.18
- 8" PVC NW INV=689.93
- 8" SANITARY SEWER MH
R.M. = 680.45
- 14) SANITARY SEWER MH
R.M. = 680.45
- 8" VCP NW INV=670.21
- 8" VCP SE INV=670.80
- 8" VCP NE INV=670.83

LEGEND

- TREE WITH TRUNK DIAM. SIZE
- STORM SEWER
- UNDERGROUND
- ELECTRIC
- GAS MAIN
- WATER MAIN
- SANITARY SEWER
- XXXXX GROUND ELEVATION
- XXXXX PAVEMENT ELEVATION
- TELEPHONE SERVICE VAULT
- UTILITY PEDESTAL
- LIGHT STANDARD
- SIGN POST
- CLOSED COVER DRAINAGE STRUCTURE
- FIRE HYDRANT
- OPEN COVER DRAINAGE STRUCTURE
- SANITARY SEWER MANHOLE
- FIBER OPTIC HAND HOLE
- CO. CLEANOUT
- GAS SERVICE SHUTOFF VALVE
- WATER SHUTOFF VALVE
- WITH 8" CASING
- CURB INLET/CATCH BASIN
- ASPHALT PAVEMENT
- CONCRETE PAVEMENT

NOTES.

THE LOCATIONS OF UNDERGROUND UTILITIES AS SHOWN HEREON ARE BASED ON ABOVE GROUND STRUCTURES AND RECORD DRAWINGS PROVIDED BY THE SURVEYOR. LOCATIONS OF UNDERGROUND UTILITIES MAY VARY FROM LOCATIONS SHOWN HEREON. ADDITIONAL BURIED UTILITIES/STRUCTURES MAY BE ENCOUNTERED AND EXCAVATIONS MADE DURING THE COURSE OF THIS SURVEY. THE SURVEYOR DOES NOT WARRANT THE ACCURACY OF ANY UTILITIES OR STRUCTURES WHICH WERE NOT VISIBLE AT THE TIME OF MAKING OF THIS SURVEY. BUILDING SETBACK LINES, RESTRICTIVE COVENANTS, SUBDIVISION RESTRICTIONS, ZONING OR OTHER LAND-USE REGULATIONS, AND ANY OTHER FACTS WHICH AN ACCURATE AND CURRENT TITLE SEARCH MAY DISCLOSE.

EXCEPT AS SPECIFICALLY STATED OR SHOWN ON THIS PLAN, THIS SURVEY DOES NOT PURPORT TO REFLECT ANY OF THE RIGHTS OR INTERESTS OF ANY PARTY. THIS SURVEY IS LIMITED TO THE BOUNDARIES AND ELEVATIONS OF THE LOTS WHICH WERE VISIBLE AT THE TIME OF MAKING OF THIS SURVEY. BUILDING SETBACK LINES, RESTRICTIVE COVENANTS, SUBDIVISION RESTRICTIONS, ZONING OR OTHER LAND-USE REGULATIONS, AND ANY OTHER FACTS WHICH AN ACCURATE AND CURRENT TITLE SEARCH MAY DISCLOSE.

ILLINOIS STATE PLANE COORDINATE SYSTEM EAST ZONE.
BENCHMARK: CITY OF AURORA CONTROL MONUMENT NO. 2 SOUTH
LOCATED AT THE SOUTHEAST CORNER OF HOLT STREET AND EDGEWALK DRIVE, 1.0 FEET NORTH OF THE NORTH EDGE OF CONCRETE WALK ALONG HOLT STREET AND 8.5 FEET WEST OF THE WEST EDGE OF CONCRETE WALK ALONG EDGEWALK.
ELEV. = 689.23 (NAD 88 DATUM)

SITE BENCHMARK:
TAG BOLT ON FIRE HYDRANT LOCATED ON THE NORTH SIDE OF NELSON LANE, ADJACENT SUBJECT PROPERTY.
ELEV. = 682.09

ORDER NO. 18-20937-REV 1
NEXT GEN-AURORA
SHEET 5 OF 5

NO.	DATE	DESCRIPTION	BY
1	06/26/2018	STORM WATER EASEMENT & WWT EASEMENT (SHEETS 2, 3 & 4)	MMS