

SYMBOL LIST

A2.1A SHEET NUMBER

Sub-drawing or enlarged area drawing or floor series discipline

1 SIM DETAIL REFERENCE DETAIL No. (TOP), SHEET No. (BOTTOM)

2 ELEVATION MARKER

REVISION CLOUD AND TAG

N NORTH ARROW

1 View Name PLAN / ELEVATION / DETAIL / SECTION TITLE
1/8" = 1'-0"

X'-X" DIMENSION STRING

X-XXX X.X PLANTING CALLOUT

PLANT SIZE (GALLONS OR CALIPER)
SPECIES ABBREVIATION
QUANTITY

LANDSCAPE PLAN EAST AURORA HIGH SCHOOL SUBDIVISION, LOT 1

EAST AURORA HIGH SCHOOL IMPROVMENTS
500 TOMCAT LANE
AURORA, IL 60505

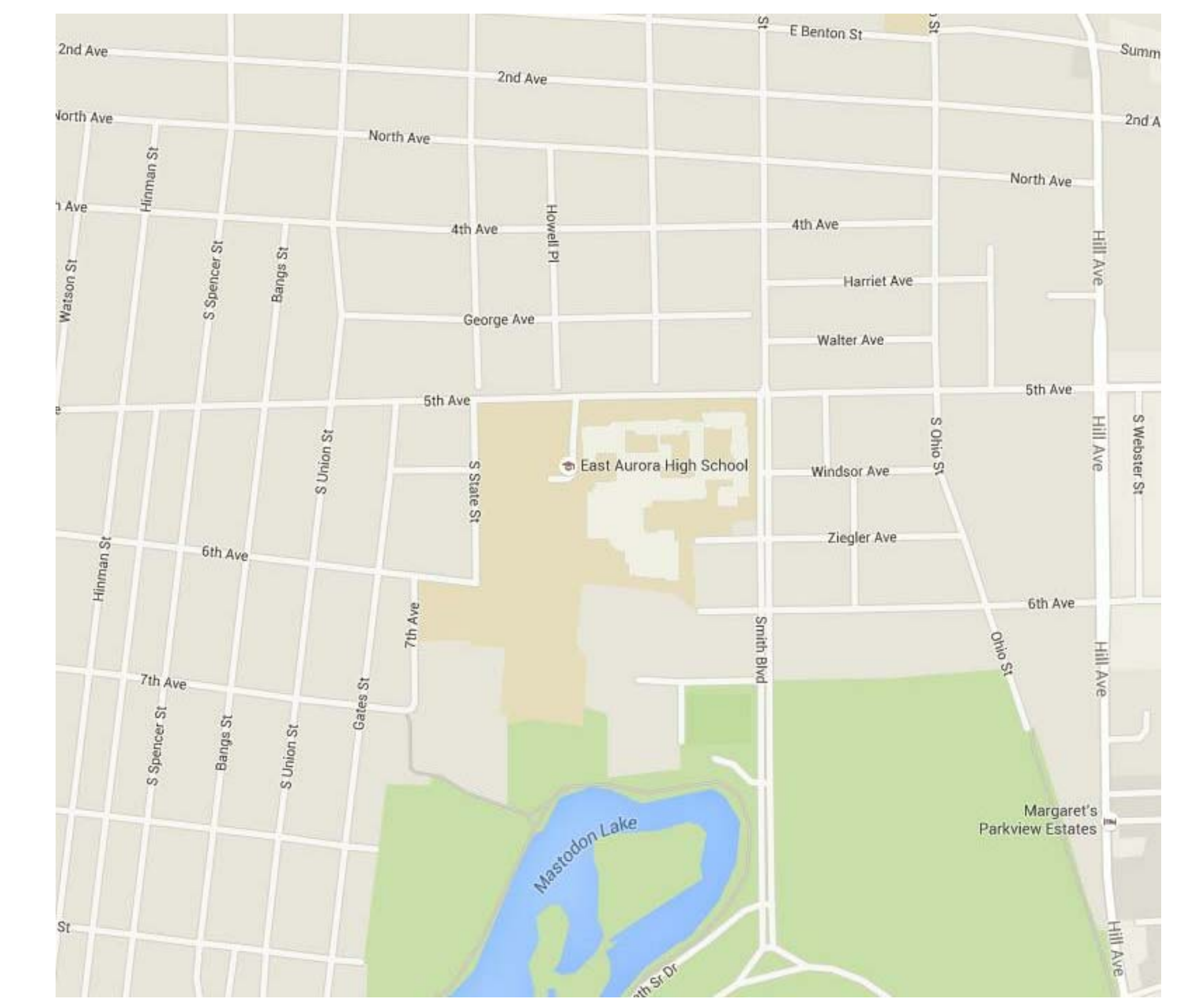
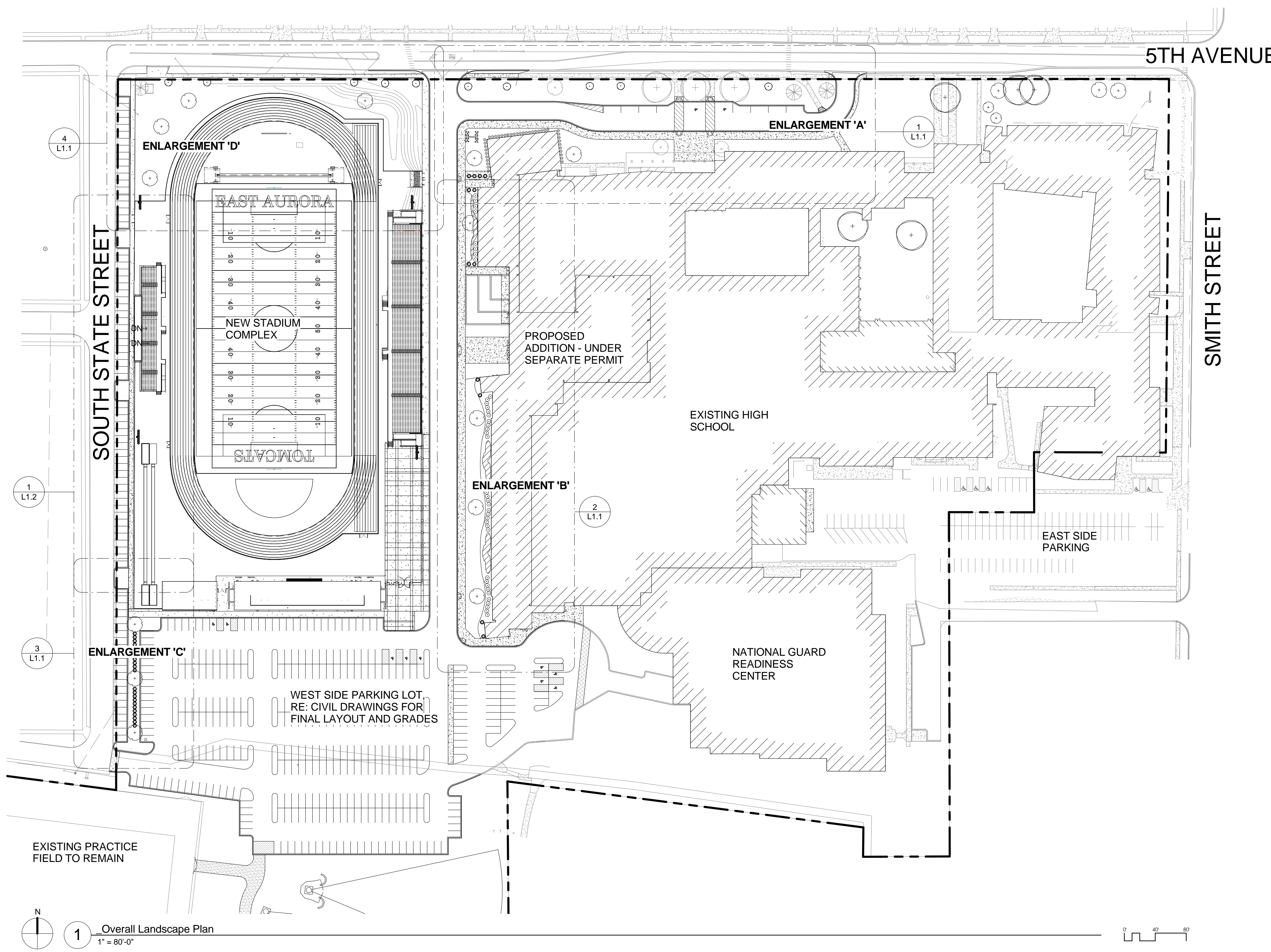
• CORDOGAN, CLARK & ASSOCIATES, INC •
: ARCHITECTS • ENGINEERS :

Landscape Data Table: Planting Material Key
Note: Symbols are blackline for proposed grayscale for existing

Canopy Trees (Minimum size 2.5 caliper) Count:	10	Perennials Count:	20
Evergreen Trees (minimum size 6 feet) Count:	0	Annuals Count:	0
Understory Trees (minimum size 2.5 caliper or 8 feet if multi-stemmed) Count:	13	Groundcover Square Footage:	1,100 SQ.FT.
Evergreen Shrub (minimum of 18 inches) Count:	50	Turf (Seeded) Square Footage:	0
Deciduous Shrubs (minimum of 18 inches) Count:	81	Turf (Sod) Square Footage:	50,150 SQ.FT.
Ornamental Grasses Count:	0		

CORDOGAN, CLARK & ASSOCIATES, INC •
: ARCHITECTS • ENGINEERS :
www.cordoganclark.com

Chicago, Illinois
Aurora, Illinois 60506
Chicago, Illinois 60606
Phone: 773.243.4771
Fax: 773.243.4771



Landscape Data Table: CTEs Provided

	CTE Value	Count Provided	Total CTEs Provided
Canopy Trees	1	10	10
Evergreen Trees	3	0	0
Understory Trees	3	13	4
Evergreen Shrubs	20	50	2
Deciduous Shrubs	20	81	4
Total:		154	20

9/6/2016 2:28:51 PM
COPYRIGHT © 2014 ALL RIGHTS RESERVED

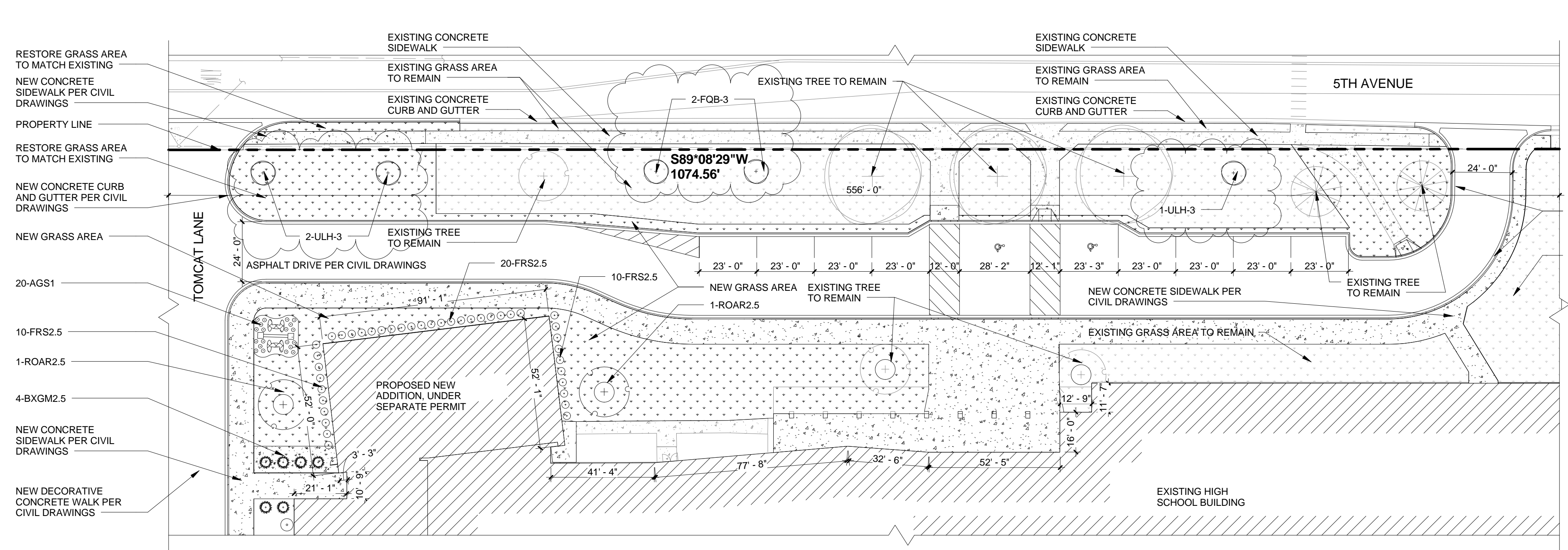
East Aurora High School Expansion /
Renovation Phase 2 - Stadium
East Aurora School District
500 TOMCAT LANE
Aurora, IL 60505

Landscape Plan

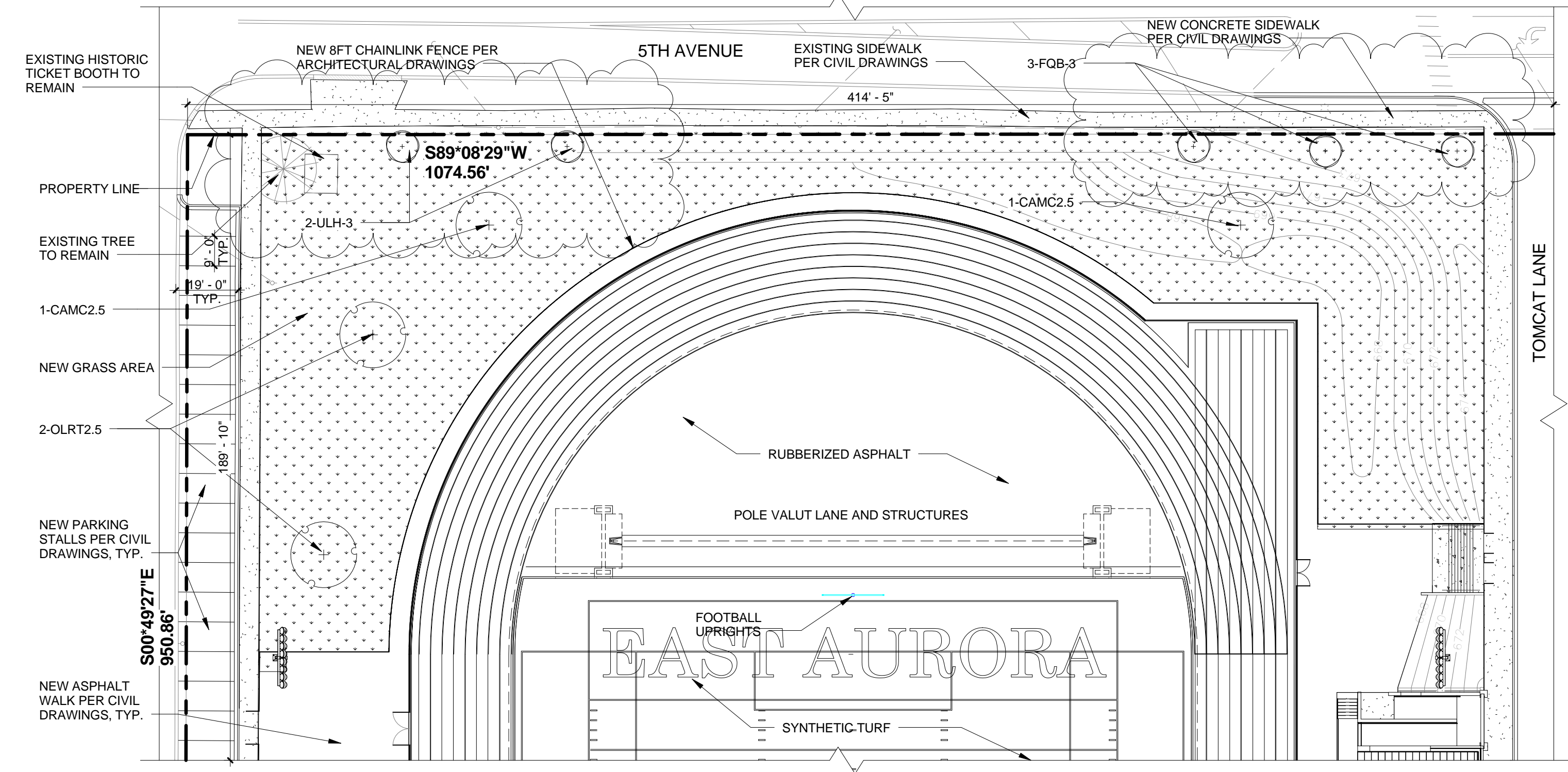
JOB NUMBER 15413
DATE AUGUST 08, 2016

ISSUED TO BID -- PHASE 2
REVISIONS:
2. ISSUE FOR CONST. 00.00.0006

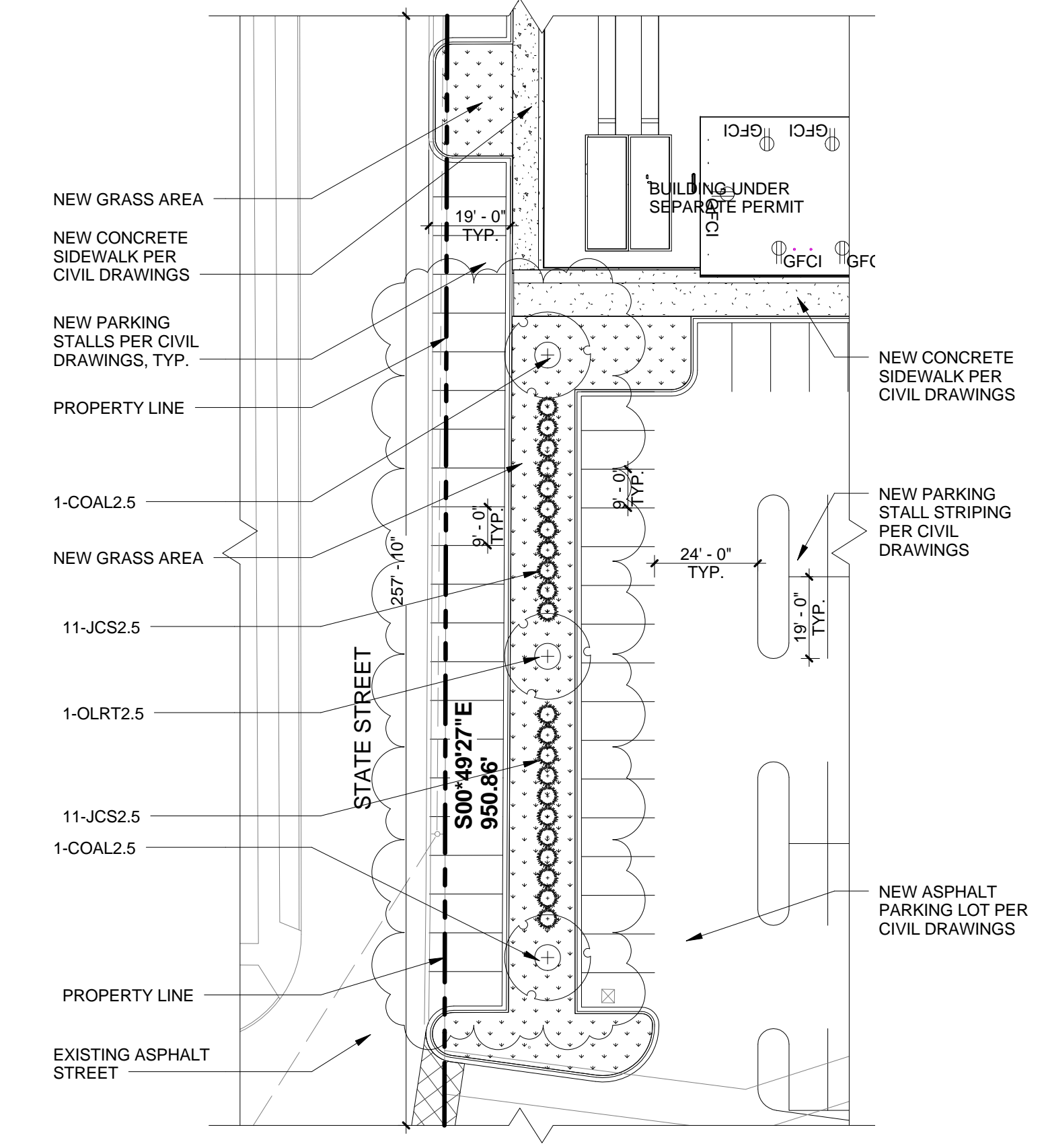
L1.0



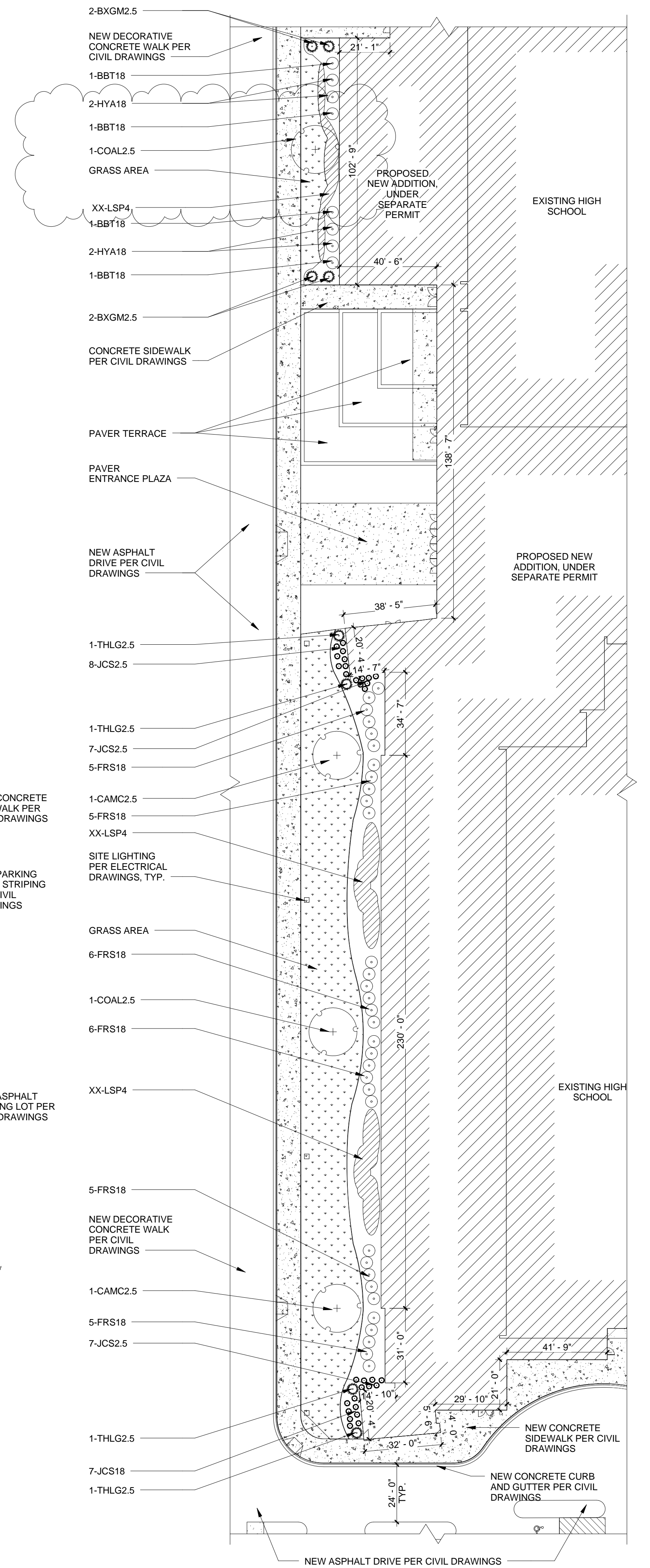
1 ENLARGEMENT 'A' - North Side Landscape Plan
1" = 30'-0"



4 ENLARGEMENT 'D' Northwest Stadium Landscape Plan
1" = 30'-0"




3 ENLARGEMENT 'C' West Side Parking Lot Landscape Plan
1" = 30'-0"



2 ENLARGEMENT 'B' West Side Entrance Landscape Plan
1" = 30'-0"

9/6/2016 2:28:56 PM
COPYRIGHT © 2016 ALL RIGHTS RESERVED

CORDOGAN, CLARK & ASSOCIATES, INC.
 ARCHITECTS • ENGINEERS
 www.cordoganclark.com
 Chicago, Illinois 60610
 Aurora, Illinois 60506
 Phone: 630.996.8077
 Fax: 630.996.8077



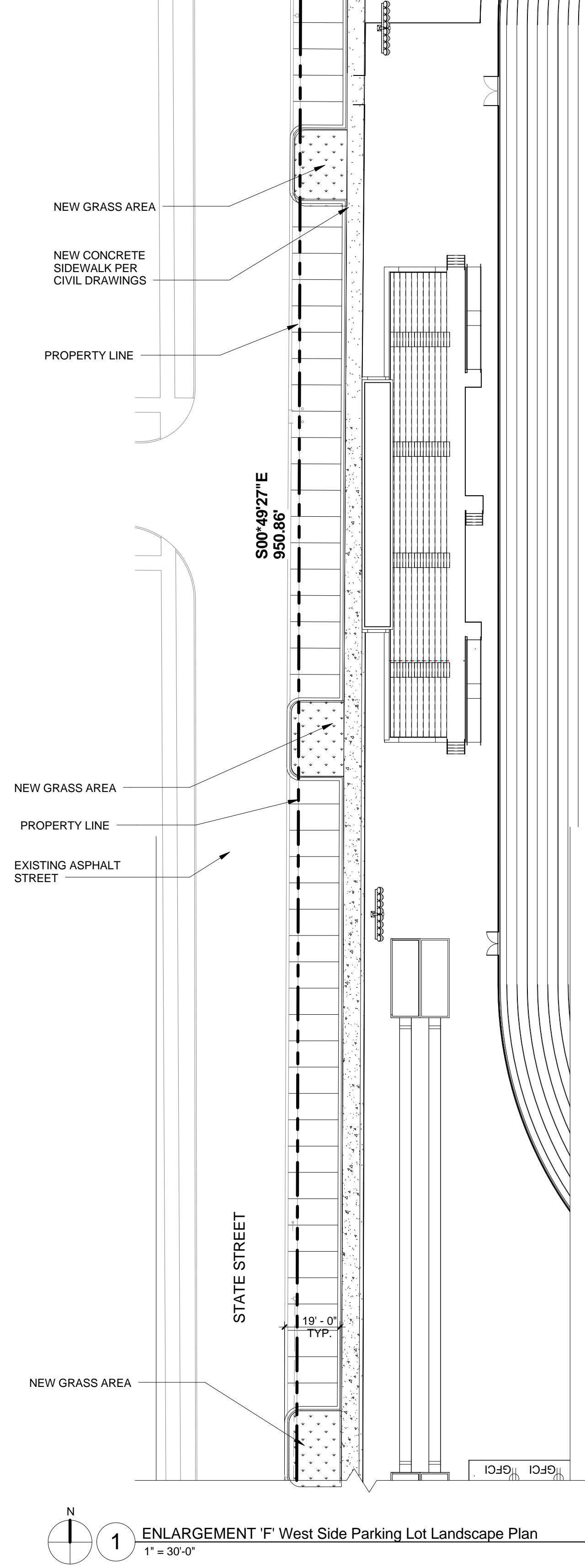
East Aurora High School Expansion /
 Renovation Phase 2 - Stadium
 East Aurora School District
 500 TOMCAT LANE
 Aurora, IL 60505

Enlarged Landscape Plans

JOB NUMBER	15413
DATE	AUGUST 08, 2016
REVISIONS:	00.00.0000
2. ISSUE FOR CONST.	

ISSUED TO BID -- PHASE 2

L1.1



1 ENLARGEMENT 'F' West Side Parking Lot Landscape Plan
1" = 30'-0"

