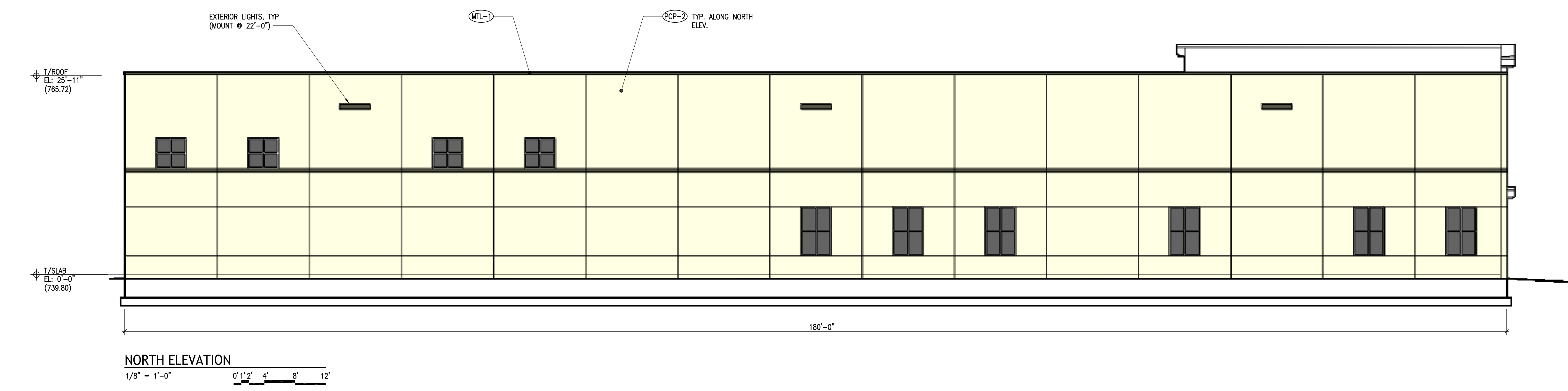
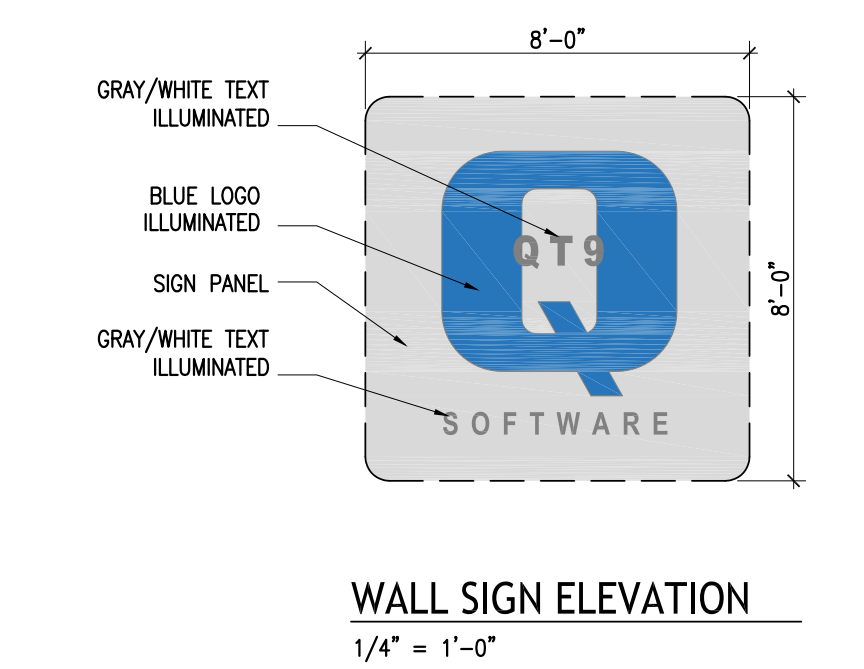
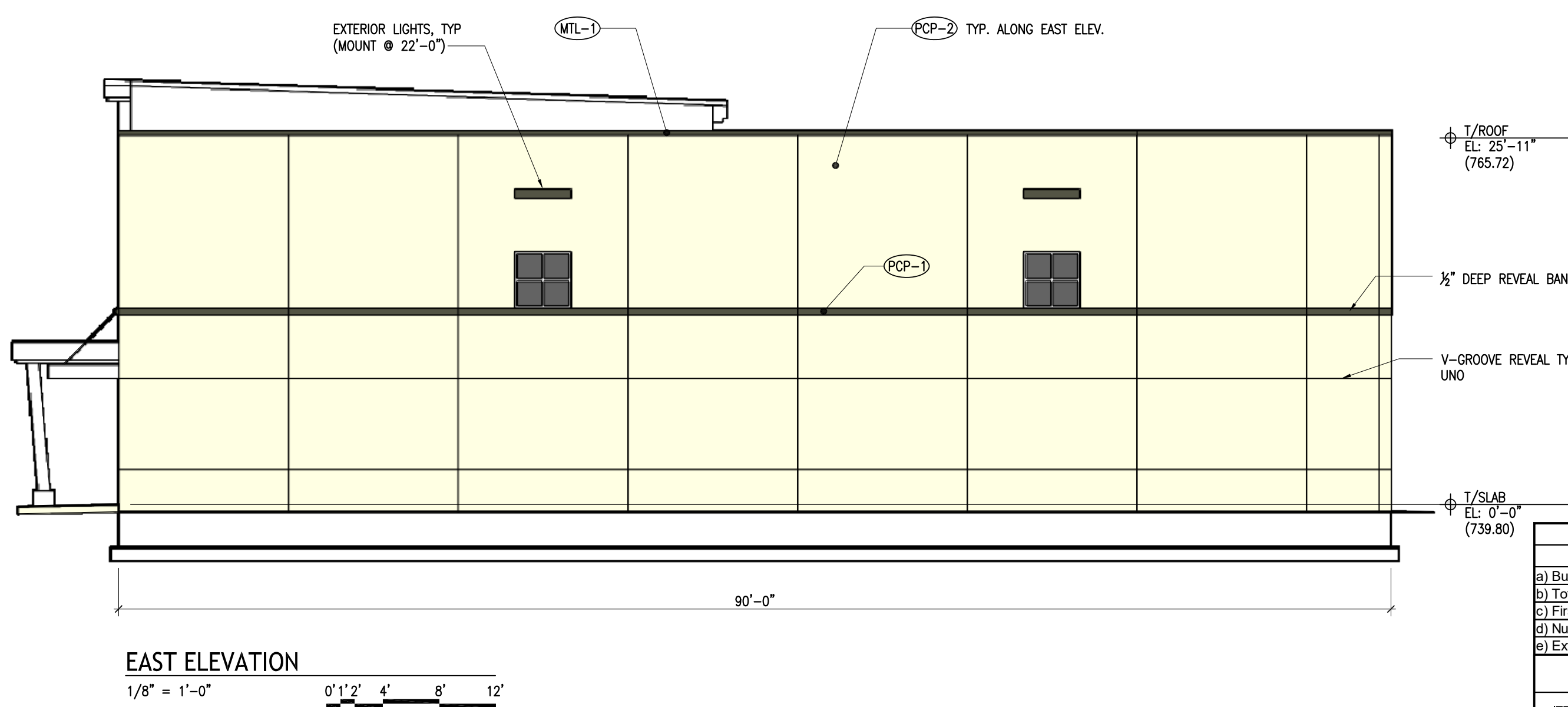
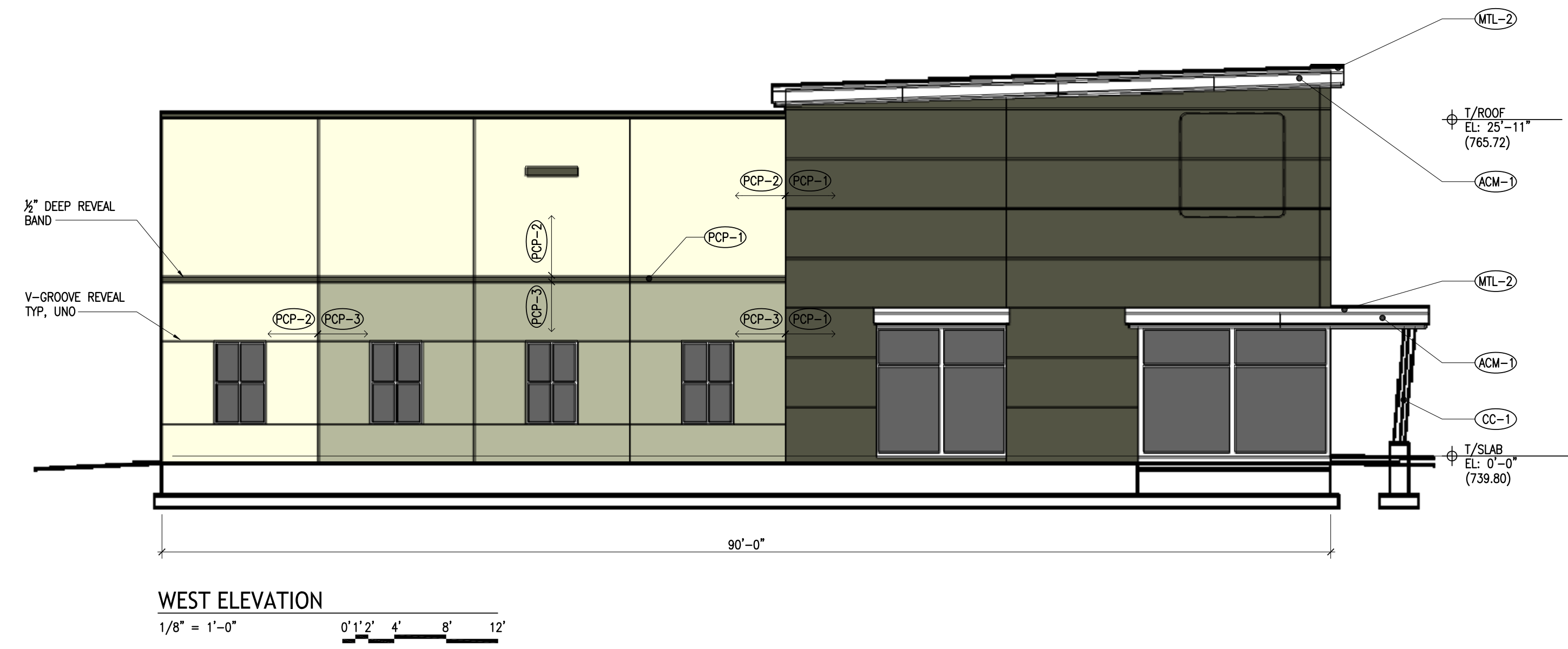
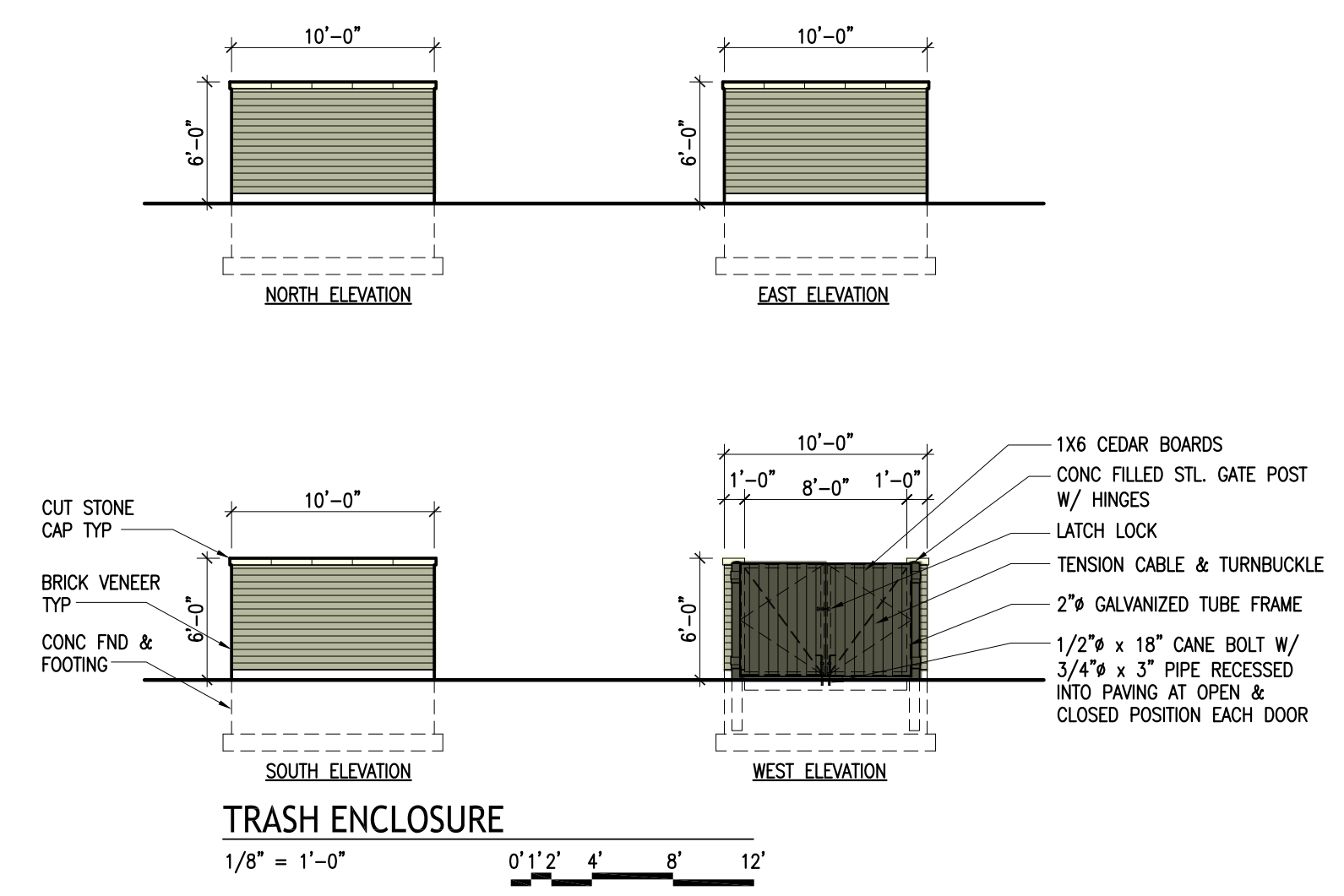
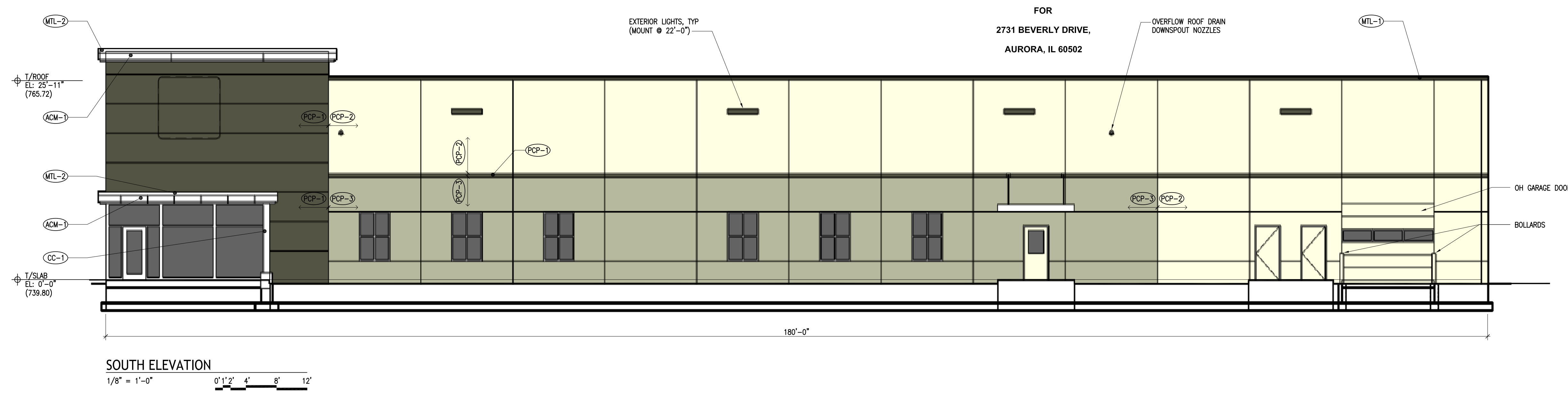


ELEVATIONS



Elevation Data Table: Elevations			
Description	Value	Unit	
a) Building Height in feet (typical)	29.17	feet	
b) Total Building Square Footage (typical)	16,200	Square Feet	
c) First Floor Building Square Footage (typical)	16,200	Square Feet	
d) Number of building stories (typical)	1	Square Feet	
e) Exterior Material List (including colors) for all buildings and accessory structures:			
FINISH MATERIAL SCHEDULE			
ITEM	DESCRIPTION	MANUF.	MODEL/STYLE NUMBER
PCP-1	PRECAST CEMENT PANEL	-	COLOR: PRECAST PAINT COLOR 1
PCP-2	PRECAST CEMENT PANEL	-	COLOR: PRECAST PAINT COLOR 2
PCP-3	PRECAST CEMENT PANEL	-	COLOR: PRECAST PAINT COLOR 3
MTL-1	PREFAB. ALUM. COPING	METAL ERA	COLOR: MATCH PCP-1
MTL-2	PREFAB. ALUM. COPING	METAL ERA	COLOR: CLEAR ANODIZED ALUMINUM
ACM-1	ALUM COMPOSITE MATERIAL	OMEGA-LITE OR EQUAL	COLOR: CLEAR ANODIZED ALUMINUM
CC-1	PREFAB. METAL COLUMN COVER	PAC-CLAD OR ATAS	COLOR: CLEAR ANODIZED ALUMINUM
PAC-1	PREFAB. ALUM CANOPY	MAPES OR EQUAL	COLOR: CLEAR ANODIZED ALUMINUM

Elevation Data Table: Wall Signage			
Wall Sign #	Description	Value	Unit
1	i) Width of Façade - on which Sign is Located	90.00	Feet
	ii) Height of Façade - on which Sign is Located	29.30	Feet
	iii) Square Footage of Façade - on which Sign is Located	2,503.00	Square Feet
	iv) Width of Sign Face	8.00	Feet
	v) Height of Sign Face	8.00	Feet
	vi) Square Footage of Sign Face	64.00	Square Feet
	vii) Percent of Sign Coverage - Façade on which Sign is Located	2.5%	Percent
2	i) Width of Façade - on which Sign is Located	180.00	Feet
	ii) Height of Façade - on which Sign is Located	29.30	Feet
	iii) Square Footage of Façade - on which Sign is Located	4,869.00	Square Feet
	iv) Width of Sign Face	8.00	Feet
	v) Height of Sign Face	8.00	Feet
	vi) Square Footage of Sign Face	64.00	Square Feet
	vii) Percent of Sign Coverage - Façade on which Sign is Located	1.3%	Percent



PREPARED FOR:
QT9 SOFTWARE
1323 BOND ST, SUITE 103
NAPERVILLE, IL 60563
TEL: (630) 592-5022
FAX: (866) 913-5022

REVISIONS					
NO.	DATE	DESCRIPTION	NO.	DATE	DESCRIPTION
1	11/07/2017	TRASH ENCLOSURE ADDED			

2731 BEVERLY DRIVE - AURORA, ILLINOIS

ELEVATIONS

DRN/CKD BY:

SCALE: 1/8" = 1'-0"

09/25/2017

JOB NO.: 917035

SHEET NO. 1 OF 1