

FINAL PLAT
OF
LINCOLN PRAIRIE BY DEL WEBB - PHASE 1B

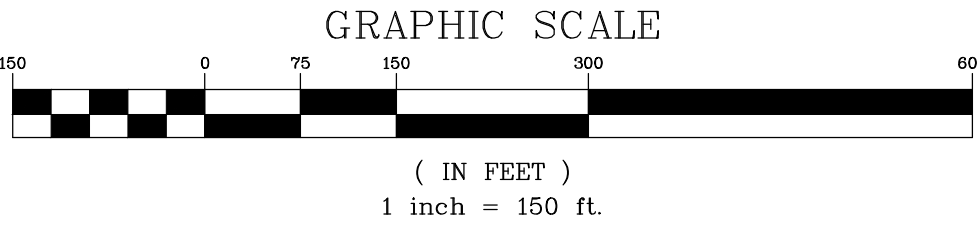
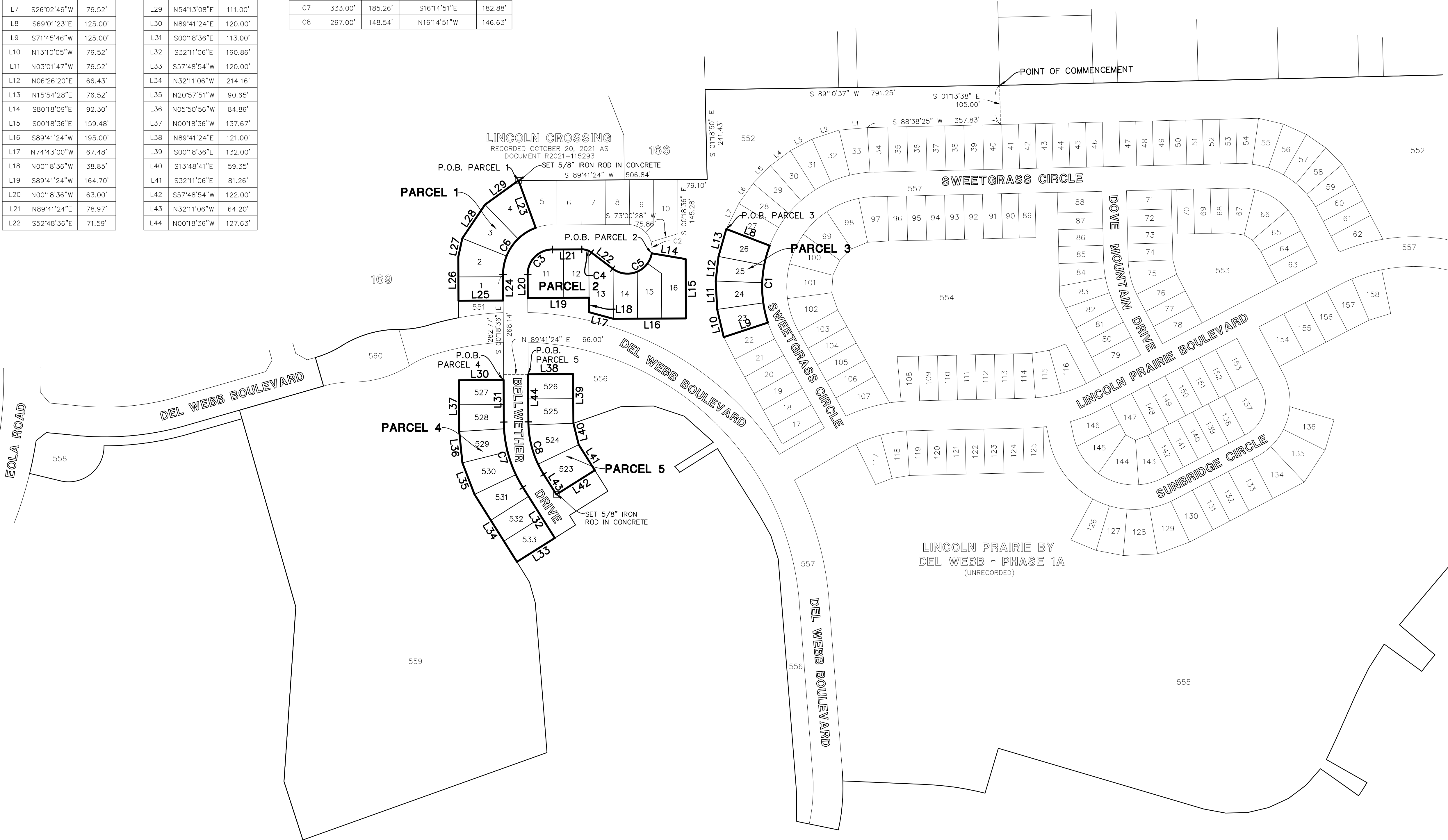
BEING A SUBDIVISION OF THAT PART OF THE SOUTHWEST QUARTER OF SECTION 18, TOWNSHIP
37 NORTH, RANGE 9, EAST OF THE THIRD PRINCIPAL MERIDIAN, IN WILL COUNTY, ILLINOIS.

CITY RESOLUTION: _____ PASSED ON: _____

LINE TABLE		
LINE	BEARING	LENGTH
L1	S85°03'29"W	76.25'
L2	S71°22'49"W	76.52'
L3	S61°54'42"W	66.43'
L4	S53°06'46"W	66.43'
L5	S44°18'49"W	66.43'
L6	S35°30'53"W	66.43'
L7	S26°02'46"W	76.52'
L8	S69°01'23"E	125.00'
L9	S71°45'46"W	125.00'
L10	N13°10'05"W	76.52'
L11	N03°01'47"W	76.52'
L12	N06°26'20"E	66.43'
L13	N15°54'28"E	76.52'
L14	S80°18'09"E	92.30'
L15	S00°18'36"E	159.48'
L16	S89°41'24"W	195.00'
L17	N74°43'00"W	67.48'
L18	N00°18'36"W	38.85'
L19	S89°41'24"W	164.70'
L20	N00°18'36"W	63.00'
L21	N89°41'24"E	78.97'
L22	S52°48'36"E	71.59'

LINE TABLE		
LINE	BEARING	LENGTH
L23	S19°53'55"E	135.54'
L24	S00°18'36"E	69.39'
L25	S89°41'24"W	120.00'
L26	N00°18'36"W	118.00'
L27	N12°24'37"E	50.92'
L28	N33°53'01"E	109.18'
L29	N54°13'08"E	111.00'
L30	N89°41'24"E	120.00'
L31	S00°18'36"E	113.00'
L32	S32°11'06"E	160.86'
L33	S57°48'54"W	120.00'
L34	N32°11'06"W	214.16'
L35	N20°57'51"W	90.65'
L36	N05°50'56"W	84.86'
L37	N00°18'36"W	137.67'
L38	N89°41'24"E	121.00'
L39	S00°18'36"E	132.00'
L40	S13°48'41"E	59.35'
L41	S32°11'06"E	81.26'
L42	S57°48'54"W	122.00'
L43	N32°11'06"W	64.20'
L44	N00°18'36"W	127.63'

CURVE TABLE					
CURVE	RADIUS	LENGTH	CHORD	BEARING	CHORD
C1	308.00'	210.80'	S01°22'11"W		206.71'
C2	66.00'	30.74'	N03°38'51"W		30.47'
C3	67.00'	105.24'	N44°41'24"E		94.75'
C4	42.50'	27.82'	S71°33'35"E		27.32'
C5	66.00'	135.34'	N68°26'37"E		112.84'
C6	133.00'	163.44'	S34°53'45"W		153.35'
C7	333.00'	185.26'	S16°14'51"E		182.88'
C8	267.00'	148.54'	N16°14'51"W		146.63'



BASIS OF BEARINGS

COORDINATES AND BEARINGS ARE BASED UPON THE ILLINOIS STATE PLANE COORDINATE SYSTEM, EAST ZONE (NAD 83), ADJUSTED TO GROUND VALUES, AS ESTABLISHED BY A REAL-TIME KINEMATIC (RTK) GLOBAL NAVIGATION SATELLITE SYSTEM (GNSS) UTILIZING THE TRIMBLE VRS NOW NETWORK.

ABBREVIATIONS

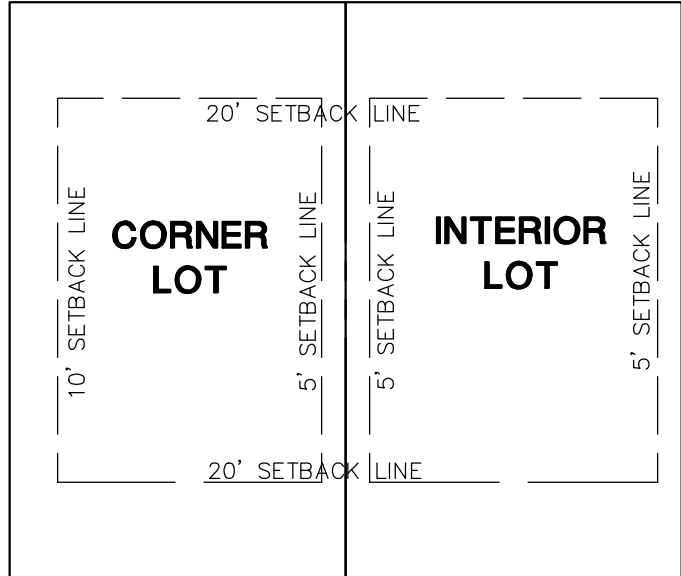
C.E. = CITY EASEMENT HEREBY GRANTED
P.O.B. = POINT OF BEGINNING

LEGEND

- = PROPERTY LINE
- = LOT LINE
- = RIGHT OF WAY LINE
- = EASEMENT LINE
- - - = SECTION LINE
- - - = BUILDING SETBACK LINE
- = SET CONCRETE MONUMENT

TYPICAL LOT DETAIL

UNLESS OTHERWISE NOTED ON THE PLAT



STREET

SHEET INDEX

SHEET 1:	OVERALL BOUNDARY
SHEET 2:	LOT AND EASEMENT DETAILS
SHEET 3:	CERTIFICATES

Development Data Table: Final Plat		
Description	Value	Unit
a) Tax/Parcel Identification Number(s) (PINs):		
01-18-200-001, 01-18-200-002, 01-18-200-003		
01-17-100-021, 01-17-100-023		
b) Subdivided Area	5.180	Acres
	225,642	Square Feet
c) Proposed New Right-of-way	NA	Acres
	NA	Square Feet
	NA	Linear Feet of Centerline
d) Proposed New Easements	1.112	Acres
	48,417	Square Feet



LINCOLN PRAIRIE BY DEL WEBB - PHASE 1B
AURORA, ILLINOIS
FINAL PLAT OF SUBDIVISION

PROJ. MGR.: JID
PROJ. ASSOC.: PGA
DRAWN BY: PGA
DATE: 01/26/22
SCALE: 1"=150'
SHEET
1 OF 3
PULAUILLOI

