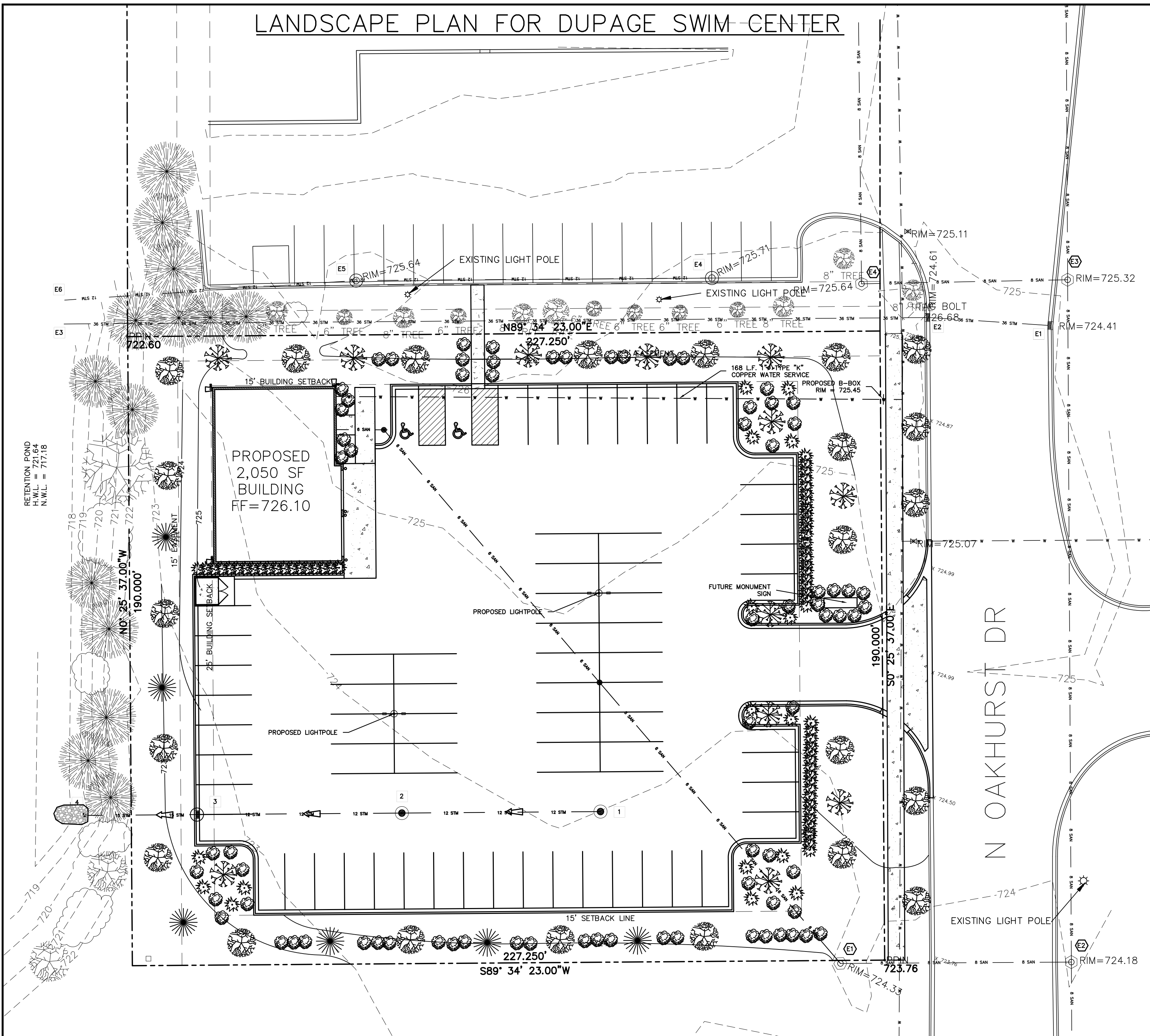


LANDSCAPE PLAN FOR DUPAGE SWIM CENTER



LANDSCAPE NOTES

PART 1 - GENERAL

1.01 DESCRIPTION

- Provide turf, trees, shrubs, and groundcover as shown and specified. The work includes:
 - Soil Preparation
 - Fertilization
 - Seeding
 - Trees, shrubs, and groundcovers
 - Mulch and plant accessories
 - Maintenance and guarantee
 - Cleaning up work areas

1.02 QUALITY ASSURANCE

- Comply with applicable local regulations.
- Sod: Comply with American Sod Producers Association (ASPA) classes of sod material.
- Plant names indicated comply with "Standard Plant Names" as adopted by the latest edition of the American Joint Committee of Horticultural Nomenclature. Names of varieties not listed conform generally with names accepted by the nursery trade. Provide stock true to botanical name and legally tagged.
- Comply with sizing and grading standards of the latest edition of "American Standard for Nursery Stock". A plant shall be dimensioned as it stands in its natural position.
- All plants shall be nursery grown under climatic conditions similar to those in the locality of the project for a minimum of 2 years.

1.03 SUBMITTALS

- Seed: Submit seed vendor's certification for required grass seed mixture, indicating percentage by weight, and percentages of purity, germination, and weed seed for each grass species.
- Sod: Submit sod grower's certification of grass species. Identify source.
- Mulch
- Straw Blanket

1.04 DELIVERY, STORAGE, AND HANDLING

- Seed: Deliver seed and fertilize materials in original unopened containers, showing weight, analysis, and name of manufacturer. Store in manner to prevent wetting and deterioration.
- Sod: Deliver and install sod out within 48-hour period.
- Fertilizer: Deliver fertilizer materials in original, unopened, and undamaged containers showing weight, analysis, and name of manufacturer. Store in manner to prevent wetting and deterioration.
- Take all precautions customary in good trade practice in preparing plants for moving. Workmanship that fails to meet the highest standards will be rejected. Dig, pack, transport, and handle plants with care to ensure protection against injury. Inspection certificates required by law shall accompany each shipment invoice or order to stock and on arrival; the certificate shall be filled with the Landscape Architect. Protect all plants from drying out. If plants cannot be planted immediately upon delivery, properly protect them with soil, or mulch. Water heeled-in plantings regularly. Cover plants transported on open vehicles with a protective covering to prevent windburn, when in leaf.

1.05 PROJECT CONDITIONS

- Confirm that the quality and depth of topsoil is satisfactory prior to beginning fine grading.
- Fine grading must be approved by owner prior to start of seeding or sodding.
- Perform grassing work only after planting and other work affecting ground surface has been completed.
- Install seed under favorable weather conditions unless approved by the Owner's Representative. The generally accepted times for seeding are:
 - Spring - April 1st to May 31st
 - Fall - August 15th to September 30th

PART 2 - PRODUCTS

2.01 MATERIALS

- Seed/Sod Fertilizer:
 - Granular, 10-10-10, all purpose at a rate of 1lbs N-P-K per 1,000 S.F.
- Plant Fertilizer:
 - Provide a granular commercial fertilizer with an analysis of 10-10-10.
- Seed:
 - Low Seed: Fresh, clean seed from most recently harvested crop which complies with all local, state, and federal seed and weed laws is free from Poa annual, bent grass and noxious weeds.
 - Blend: Percent by Weight:
 - Field of dreams reseed mix, (as available from Natural Seed, Downers Grove, IL)
 - 2 - Named Kentucky Blue Grasses 50%
 - 2 - Named Turf type Perennial Grasses 50%
 - Bottom of Storm water Management Basins to be over seeded with Red top seed at a rate of 50 lbs per acre.
- Plants: Provide plants typical of their species or variety with normal, densely developed branches and vigorous, fibrous root systems. Provide only sound, healthy, plants free from defects, sun scald injuries, frost cracks, abrasions of the bark, plant disease, insect eggs, borers, and all forms of infestation. All plants shall have a full development form.
 - Dig balled and burlapped plants with firm, natural balls of earth. Provide ball sizes complying with the latest edition of the "American Standard for Nursery Stock".
 - Provide shade and evergreen tree species with a single main trunk unless otherwise specified or accepted.
 - Provide plants matched in form when arranged in groups.
 - Provide evergreen trees branched to the ground unless otherwise specified or accepted.
 - Provide shrubs and small plants meeting the requirements for spread and height indicated in the plant list.
 - The measurements for height shall be taken from the ground level to the average height of the top of the plant and not the longest branch.

PART 3 - EXECUTION

3.01 INSPECTION

- Examine finish surface grades, topsoil quality, depth, and conditions of installations.

3.02 PREPARATION

- Loosen topsoil of lawn areas to minimum depth of 2". Remove stones over 1" in any dimension and sticks, roots, rubbish, and extraneous matter.
- Grade lawn areas to smooth, free draining and even surface with a loose, uniformly fine texture. Mechanically or manually rake; remove ridges and fill depressions as required to drain.
- Restore prepared areas to specified condition if eroded, settled, or otherwise disturbed after fine grading and prior to seeding or sodding.
- Time of Planting:
 - Evergreen Material: Plant evergreen materials between September 2nd and November 1st or in spring before new growth begins.
 - Deciduous material: Plant deciduous materials in a dormant condition or pre-dig and heal until site is ready.
- Locate plants as indicated and approved in the field by the Landscape Architect.
- Rototill all groundcover beds.
- Provide shrub pits at least 8" greater than the diameter of the root system and 12" greater for trees.

3.03 SEED INSTALLATION

- Turf areas:
 - Seed immediately after preparation of bed.
 - Perform seeding operations when the soil is dry and when winds do not exceed 20 miles per hour velocity.
 - Sow seed at 300 lbs. per acre.
 - Conventional Seeding:
 - Apply seed with a rotary or drop type distributor. Seed evenly.
 - After seeding, rake soil surface lightly to incorporate seed.
 - Within 24 hours, place straw blanket over all seeded areas. Place blanket perpendicular to contour lines and fasten in place per manufacturer's recommendations.

3.04 PLANT INSTALLATION

- Trees and Shrubs:
 - Set plant material in the planting pit to proper grade and alignment. Do not fill around trunks or stems.
 - After balled or burlapped plants are set, fill all voids.
 - Mix approved commercial fertilizer at 10 lbs. per cubic yard of backfill.
- Groundcovers:
 - Where groundcovers are specified on the plans, rototill entire plant bed to 6" depth using amended topsoil. Incorporate commercial 10-10-10 fertilizer into prepared soil mixture at an appropriate rate of 1 lb. per square yard.
- Mulching:
 - Mulch tree and shrub planting pits and shrub beds with required mulching material 3" deep immediately after planting. Thoroughly water mulched areas. After watering, rake mulch to provide a uniform finished surface.
- Wrapping:
 - Inspect trees for injury to trunks, evidence of insect infestations, and improper pruning before wrapping.
 - Wrap trunks of all trees spirally from bottom to top with specified tree wrap and secure in place. Wrapping is at the discretion of the contractor.
- Pruning:
 - Prune branches of deciduous stock, after planting, to preserve the natural character appropriate to the particular plant requirements. In general, remove approximately 1/4 of the leaf bearing buds. Remove or cut back broken, damaged, and unsymmetrical growth of new wood.
 - Multiple leader plants: Preserve the leader which will best promote the symmetry of the plant. Cut branches flush with the trunk or main branch, at diameter of the supporting branch. Make cut on an angle.
 - Prune evergreens only to remove broken or damaged branches.

3.05 FINAL COMPLETION, INSPECTION, AND ACCEPTANCE

- Upon completion inspection of all work will be made by the owner or his representative. At that time if all work is satisfactory, that will constitute Final Acceptance.
- Seeded areas will be inspected at completion of the installation and accepted subject to compliance with specified materials and installation requirements.
 - Seeded areas will be acceptable provided all requirements, have been complied with.
 - No seeded areas shall have bare spots or unacceptable cover totaling more than 2% of the individual areas, in areas requested to be inspected.
- Inspection of all work shall be made upon request of Contractor. At that time, if all work is satisfactory, that will constitute Final Acceptance.
- Plants that have died or are in unhealthy or badly impaired condition upon inspection shall be treated or replaced at no additional cost to Owner.
- Replace rejected plants in the season that is most favorable for resetting kinds of plants required.

3.06 CLEANING

- Perform cleaning during installation of the work and upon completion of the work. Remove from sites all excess materials, soil, debris, and equipment.

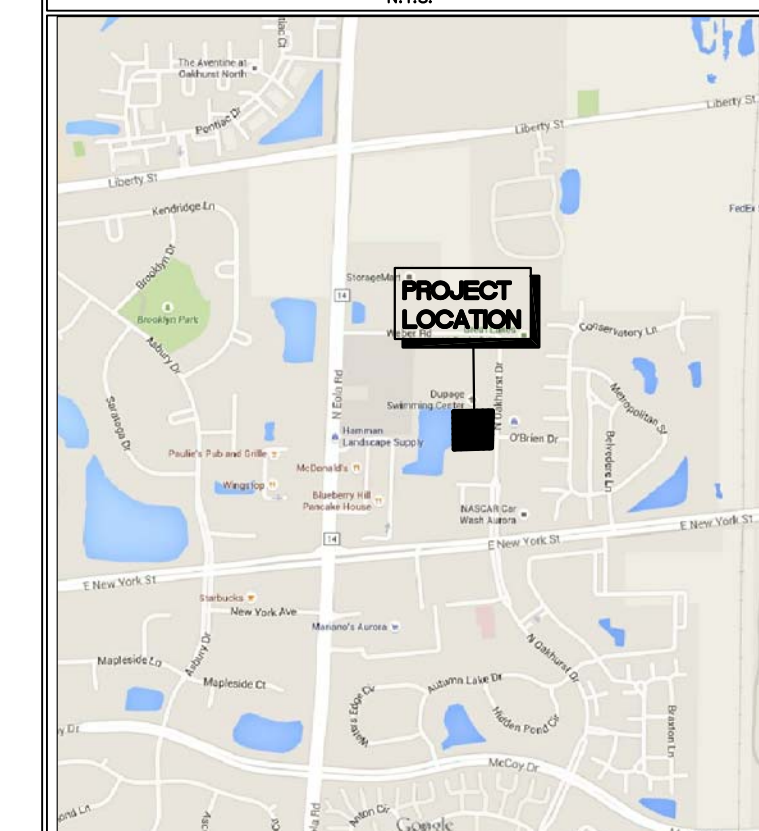
4.01 MISC. NOTES

- All grades to be established to meet engineering drawings by others.
- Basin bottoms seed, blow with straw mulch and crimp straw in place, as noted on plan.
- Seed and install straw blanket all other turf areas.
- All disturbed areas that are not mulched shall be seeded.

Planting Materials Table: Landscape Plan
Note: Symbols are blackline for proposed grayscale for existing

Planting Material	Count
Canopy Trees (minimum size 2.5 caliper)	23
Evergreens (minimum size 6 feet)	6
Understory Trees (minimum size 2.5 caliper or 8 feet if multi-stemmed)	12
Deciduous Shrubs (minimum of 18 inches)	75
Evergreen Shrubs (minimum of 18 inches)	75
Ornamental Grasses	0
Perennials	8
Annuals	0
Groundcover	0

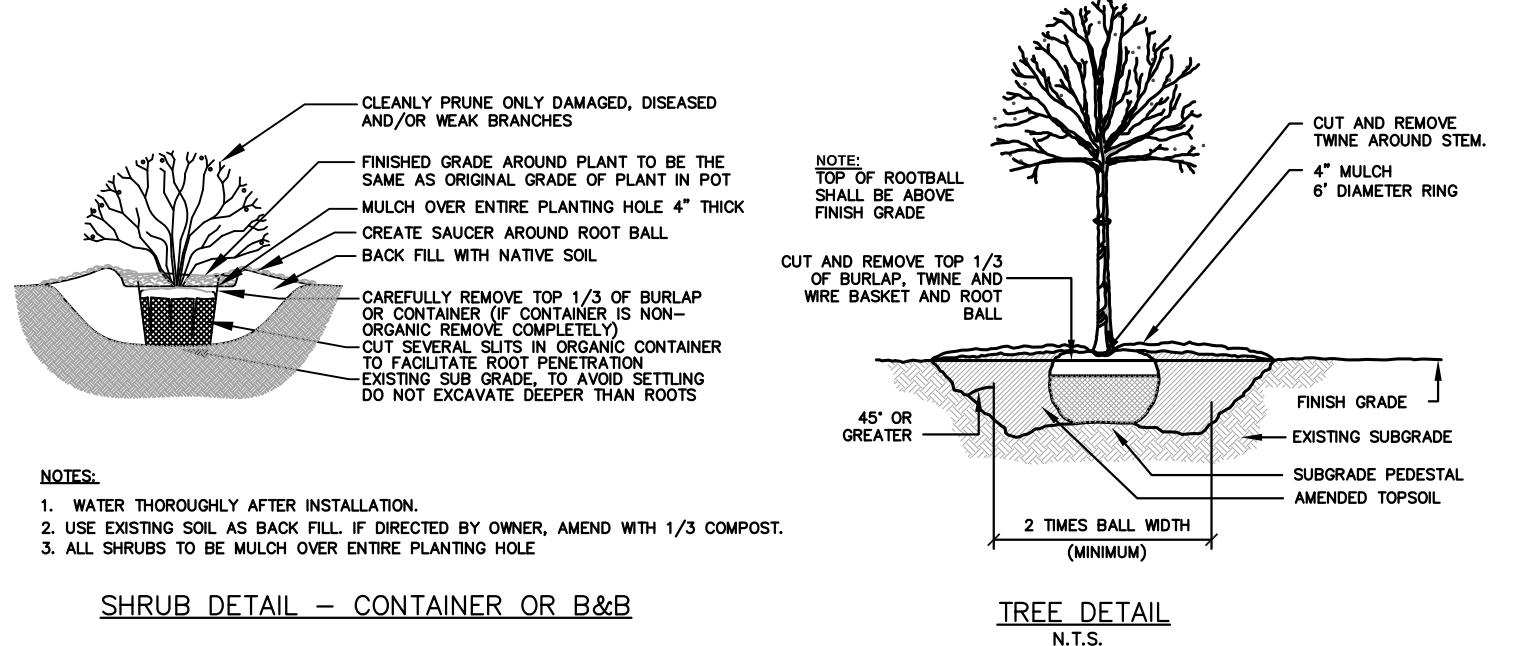
LOCATION MAP
N.T.S.



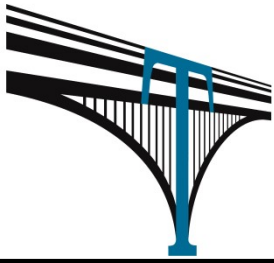
Landscape Data Table: CTEs Provided

Planting Material	CTE Value	Count Provided	Total CTEs Provided
Canopy Trees	1	23	23
Evergreens	3	6	2
Understory Trees	3	12	4
Deciduous Shrubs	20	75	4
Evergreen Shrubs	20	75	4
Total:		191	37

ALL DISTURBED AREAS THAT ARE NOT BEING MULCHED SHALL RECEIVE A MINIMUM OF 6" OF PULVERIZED TOP SOIL & BE SEED



NO.	DATE	NOTES



TEBRUGGE ENGINEERING

146 HUNTSMAN DRIVE

PLANO, IL. 60545

PHONE: (630) 552-4390

FAX: (630) 552-4392

Landscape Material Data Plan

Canopy Tree	Species Name	Percent
Autumn Blaze Maple	Acer rubrum	30%
Kentucky Coffee	Gymnocladus dioicus	35%
Swamp White Oak	Quercus bicolor	35%
Evergreen Tree	Species Name	Percent
Blue Spruce	Picea pungens	33%
Concolor fir	Abies concolor	33%
Eastern White Pine	Pinus strobus	33%
Understory Tree	Species Name	Percent
Bradford Pear	Pyrus calleryana	33%
River Birch	Betula nigra	33%
Allegheny Serviceberry	Amelanchier laevis	33%
Deciduous Shrub	Species Name	Percent
Dwarf Burning Bush	Euonymus alatus	33%
Common Ninebark	Physocarpus opulifolius	33%
Annabelle Hydrangea	Hydrangea	33%
Evergreen Shrub	Species Name	Percent
Chicagoland Green Boxwood	Buxus x 'Glencoe'	57%
Arborvitae	thuja	21%
Barberry	berberis	21%