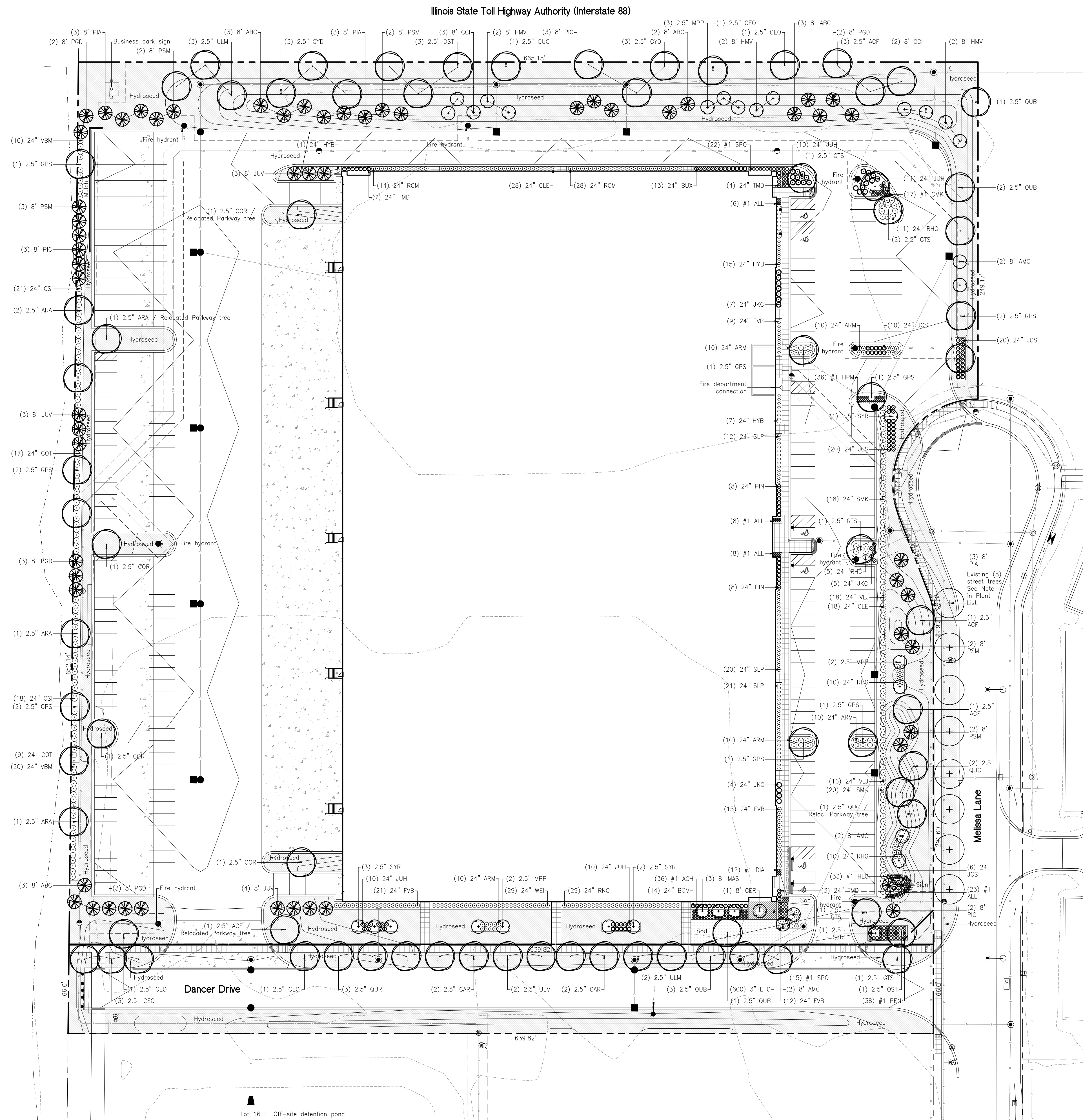


Landscape Plan for Podolsky Orchard 88 Phase II Resubdivision



Plant List for 88 Orchard Industrial

| Shade Trees | Key | Qty. | Size | Botanical Name | Common Name | Remarks | Percentage |
|-------------|-----|------|------|--|-------------------------------|---------|-----------------------|
| ACF | 6 | 2.5" | | Acer x freemanii 'Autumn Blaze' | Autumn Blaze Freeman Maple | BB | 8.1 |
| ARA | 5 | 2.5" | | Acer rubrum 'Armstrong' | Armstrong Red Maple | BB | 6.5 |
| CAR | 4 | 2.5" | | Carpinus caroliniana | American Hornbeam | BB | 5.4 |
| CEO | 7 | 2.5" | | Quercus occidentalis | Common Hackberry | BB | 9.5 |
| COR | 4 | 2.5" | | Corylus colurna | Turkish Filbert | BB | 5.4 |
| GPS | 11 | 2.5" | | Ginkgo biloba 'Princeton Sentry' | Princeton Sentry Ginkgo | BB | 14.8 |
| GTS | 6 | 2.5" | | Gleditsia triacanthos var. inermis 'Skyline' | Skyline Thornless Honeylocust | BB | 8.1 |
| GRD | 6 | 2.5" | | Gymnocladus dioica | Kentucky Coffeetree | BB | 8.1 |
| OST | 4 | 2.5" | | Ostrya virginiana | Ironwood | BB | 5.4 |
| QUB | 7 | 2.5" | | Quercus bicolor | Swamp White Oak | BB | 9.5 |
| QUC | 4 | 2.5" | | Quercus muhlenbergii | Chinquapin Oak | BB | 5.4 |
| QUR | 3 | 2.5" | | Quercus rubra | Red Oak | BB | 4.0 |
| ULM | 7 | 2.5" | | Ulmus x 'Morton Glossy' | Triumph Elm | BB | 9.5 |
| | | | | | | | 74 shade trees = 100% |

8 2.5" Existing parkway trees @ Melissa Lane

NOTE: Parkway trees shall be evaluated to determine form, condition and health prior to construction. All trees found to be unacceptable by the City of Aurora shall be replaced with 2.5" caliper trees of the same species, or as required by the City.

| Evergreen Trees | Key | Qty. | Size | Botanical Name | Common Name | Remarks | Percentage |
|-----------------|-----|------|------|-----------------------|-----------------------|--------------|---------------------------|
| ABC | 11 | 8' | | Abies concolor | Concolor Fir | BB | 18.7 |
| JUV | 10 | 8' | | Juniperus virginiana | Eastern Redcedar | BB/Unsheared | 18.9 |
| PGD | 10 | 8' | | Picea canadensis | Black Hills Spruce | BB/Clump | 16.9 |
| PIA | 9 | 8' | | Picea abies | Norway Spruce | BB | 15.3 |
| PIC | 8 | 8' | | Picea canadensis | Colorado Green Spruce | BB | 13.5 |
| PSM | 11 | 8' | | Pseudotsuga menziesii | Douglas Fir | BB | 18.7 |
| | | | | | | | 59 evergreen trees = 100% |

| Understory Trees | Key | Qty. | Size | Botanical Name | Common Name | Remarks | Percentage |
|------------------|-----|------|------|----------------------------------|--------------------------------|----------|----------------------------|
| AMC | 6 | 8' | | Amelanchier canadensis | Shadblow Serviceberry | BB/Clump | 17.1 |
| CCI | 5 | 6' | | Crataegus crusgalli var. inermis | Thornless Cockspur Hawthorn | BB/Clump | 14.3 |
| CER | 1 | 8' | | Cercis canadensis | Eastern Redbud | BB/Clump | 2.9 |
| HMV | 6 | 8' | | Hemlockis versalis | Vernal Whiteazel | BB/Clump | 17.1 |
| MAS | 3 | 8' | | Magnolia stellata 'Royal Star' | Royal Star Magnolia | BB/Clump | 8.6 |
| MPP | 7 | 2.5" | | Morus purpurea | Purple Prince Crabapple | BB | 20.0 |
| SYR | 7 | 2.5" | | Syringa reticulata 'Ivory Silk' | Ivory Silk Japanese Tree Lilac | BB | 20.0 |
| | | | | | | | 35 understory trees = 100% |

| Deciduous Shrubs | Key | Qty. | Size | Botanical Name | Common Name | Remarks | Percentage |
|------------------|-----|------|------|---|--------------------------------|---------|-----------------------------|
| ARM | 50 | 24" | | Aronia melanocarpa | Low Shrub Mound Chokeberry | BB | 9.4 |
| CLE | 46 | 24" | | Clethra alnifolia | Hummingbird Summersweet | BB | 8.7 |
| COT | 26 | 24" | | Cotoneaster acutifolius | Peking Cotoneaster | BB | 4.9 |
| CSI | 39 | 24" | | Cornus sericea 'Isanti' | Isanti Redosier Dogwood | BB | 7.3 |
| FVB | 57 | 24" | | Forsythia virens 'Bronwen's' | Bronx Dwarf Forsythia | BB | 10.7 |
| HBV | 23 | 24" | | Hydrangea paniculata 'Bobo' | Bobo Hydrangea | BB | 4.4 |
| RGM | 42 | 24" | | Ribes alpinum 'Green Mound' | Green Mound Alpine Currant | BB | 7.9 |
| RHC | 36 | 24" | | Rhus aromatica 'Gro-Low' | Gro-Low Fragrant Sumac | BB | 6.8 |
| RKO | 29 | 24" | | Rosa 'RADcon' | Pink Knock Out Rose | BB | 5.5 |
| SLP | 53 | 24" | | Spiraea japonica 'Little Princess' | Little Princess Spirea | BB | 9.9 |
| SMK | 38 | 24" | | Syringa patula 'Miss Kim' | Miss Kim Dwarf Lilac | BB | 7.1 |
| VBM | 30 | 24" | | Viburnum dentatum 'Christom' | Blue Muffin Arrowwood Viburnum | BB | 5.6 |
| VLI | 34 | 24" | | Viburnum dent. 'XLM seventeen Little Joe' | Little Joe Viburnum | BB | 6.4 |
| WEI | 29 | 24" | | Weigela florida 'Minuet' | Minuet Weigela | BB | 5.5 |
| | | | | | | | 532 deciduous shrubs = 100% |

| Evergreen Shrubs | Key | Qty. | Size | Botanical Name | Common Name | Remarks | Percentage |
|------------------|-----|------|------|---|---------------------------|---------|-----------------------------|
| BGM | 14 | 24" | | Buxus x 'Green Mound' | Green Mound Boxwood | BB | 8.2 |
| BUX | 13 | 24" | | Buxus x microphylla 'Glencoe' | Chicagoland Green Boxwood | BB | 7.7 |
| JCS | 56 | 24" | | Juniperus chinensis var. sargentii | Sargent Juniper | BB | 32.9 |
| JKC | 16 | 24" | | Juniperus chinensis 'Kajaya's Compacta' | Kajaya's Compact Juniper | BB | 9.5 |
| JUH | 41 | 24" | | Juniperus horizontalis 'Plumosa Compacta' | Compact Andorra Juniper | BB | 24.1 |
| PM | 16 | 24" | | Pinus mugo 'Compacta' | Compact Mugo Pine | BB | 9.4 |
| TMD | 14 | 24" | | Taxus x media 'Densiformis' | Dense Yew | BB | 8.2 |
| | | | | | | | 170 evergreen shrubs = 100% |

| Perennials, Ornamental Grasses and Groundcovers | Key | Qty. | Size | Botanical Name | Common Name | Remarks | Percentage |
|---|-----|------|------|--|--------------------------|-----------|--|
| ACH | 36 | #1 | | Achillea 'Moonshine' | Moonshine Yarrow | Container | 4.2 |
| ALL | 45 | #1 | | Allium 'Summer Beauty' | Summer Beauty Allium | Container | 5.3 |
| CMK | 17 | #1 | | Calamagrostis acutiflora 'Karl Foerster' | Feather Reed Grass | Container | 1.9 |
| DIA | 12 | #1 | | Dianthus gratiopolitanus 'Firewall' | Firewall Chestnut Pink | Container | 1.4 |
| EFC | 600 | 3" | | Euonymus fortunei var. coloratus | Purpleleaf Wintercreeper | Pots | 70.3 |
| HLC | 13 | #1 | | Hemerocallis 'Little Graspette' | Little Graspette Daylily | Container | 3.9 |
| HPM | 36 | #1 | | Hemerocallis 'Pardon Me' | Pardon Me Daylily | Container | 4.2 |
| PEN | 38 | #1 | | Pennisetum alopecuroides 'Hornet' | Dwarf Fountain Grass | Container | 4.5 |
| SPO | 37 | #1 | | Sporobolus heterolepis | Prarie Droopseed | Container | 4.3 |
| | | | | | | | 854 perennials, ornamental grasses and groundcovers = 100% |

Note

Plants noted as "Relocated Parkway trees" are for calculations only. Landscape contractor shall provide and install these trees.

Landscape Data Table: Planting Material Key

| Symbol | Description | Total |
|--------|-----------------------------------|----------------|
| ○ | Canopy Trees | 82 |
| ● | Evergreen Trees | 59 |
| + | Understory Trees | 35 |
| ○ | Deciduous Shrubs | 532 |
| ● | Evergreen Shrubs | 170 |
| ○ | Perennials and Ornamental Grasses | 254 |
| ■ | Groundcover | 600 |
| ■ | Turf Hydrosed | 83,238 sq. ft. |
| ■ | Turf Sod | 1888 sq. ft. |

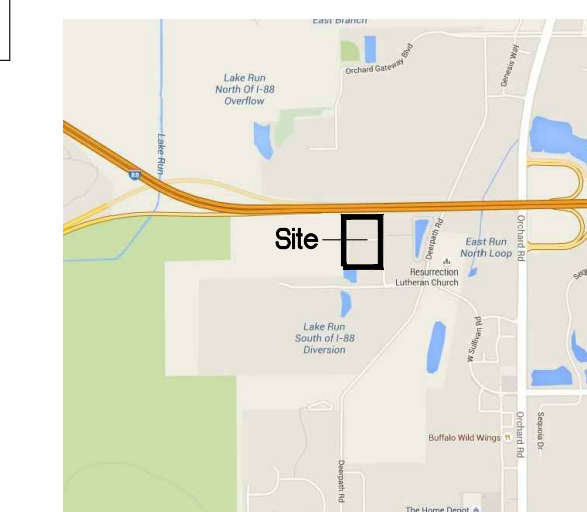
Landscape Data Table: CTEs Provided

| CTE Value | Count Provided | Total CTEs Provided |
|------------------|----------------|---------------------|
| Canopy Trees | 1 | 82 |
| Evergreen Trees | 3 | 59 |
| Understory Trees | 3 | 35 |
| Deciduous Shrubs | 20 | 532 |
| Evergreen Shrubs | 20 | 170 |
| TOTAL: | 878 | 148.3 |

Legend of Symbols

- Fire hydrants
- Water structures
- Sanitary structures
- Stormwater structures

Location Map



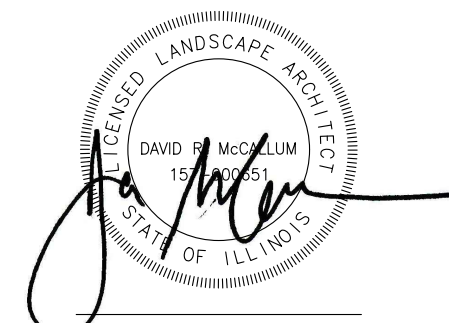
Landscape Plan for Podolsky Orchard 88 Phase II Resubdivision

1998 Melissa Lane
2706, 2717, 2718 Dancer Drive
Aurora, Illinois

The Missner Group
1700 West Higgins Road, Suite 400
Des Plaines, Illinois 60018

DAVID R. McCALLUM ASSOCIATES, INC.

LANDSCAPE ARCHITECTS
350 N. Milwaukee Avenue | Libertyville, Illinois 60068
T 847.382.0209 | F 847.382.0204



DAVID R. McCALLUM
Registered Landscape Architect
State of Illinois No. 157-000651
Expiration Date 08.31.19

Landscape Plan for Podolsky Orchard 88 Phase II Resubdivision

Owner and Petitioner:
Orchard 88 TMG, LLC
1700 West Higgins Road, Suite 400
Des Plaines, Illinois 60018

| | | |
|------|----------------------|----------|
| 4 | City Review Comments | 04/27/18 |
| 3 | City Review Comments | 04/10/18 |
| 2 | City Review Comments | 02/02/18 |
| 1 | For Review | 01/11/18 |
| Mark | Description | Date |

Issuance

Number
438015

Scale
1" = 40'

File
4380FF9A

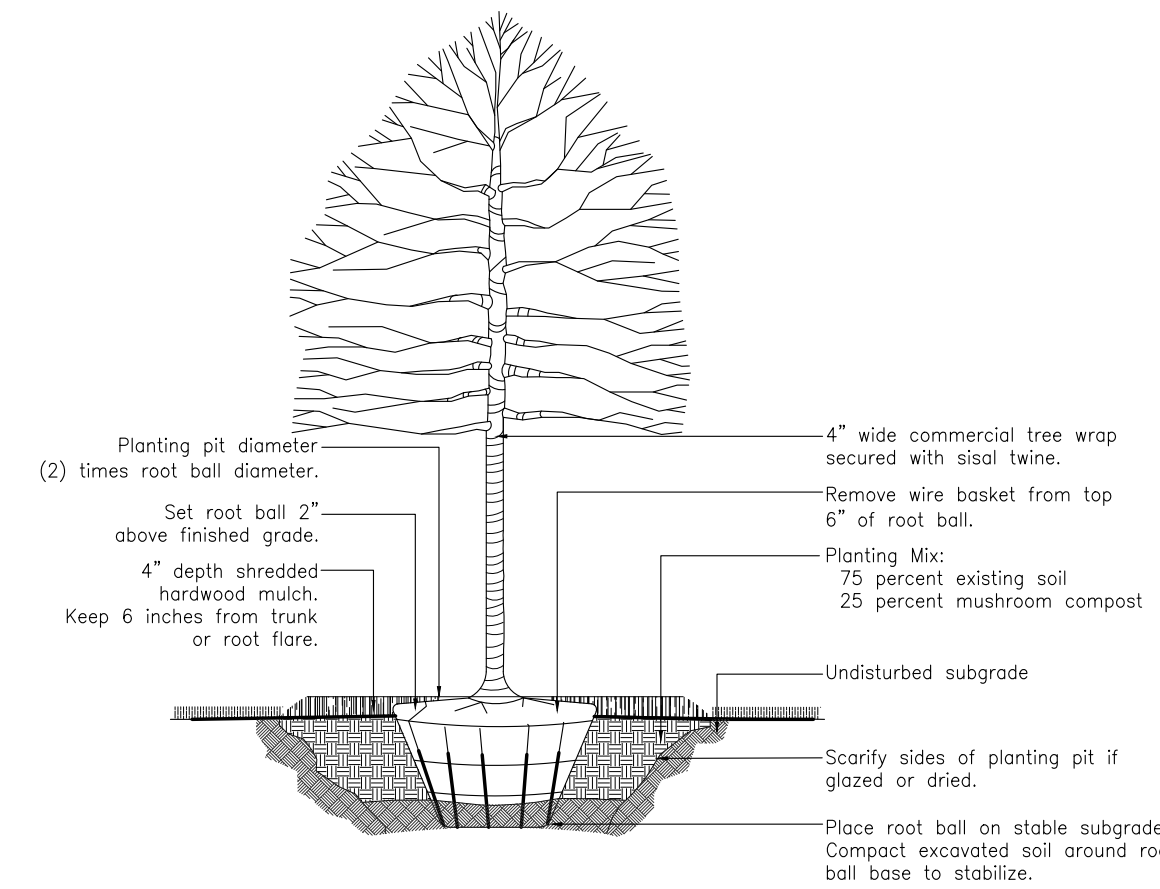
Landscape Plan for Podolsky Orchard 88 Phase II Resubdivision

Landscape Plan for Podolsky Orchard 88 Phase II Resubdivision

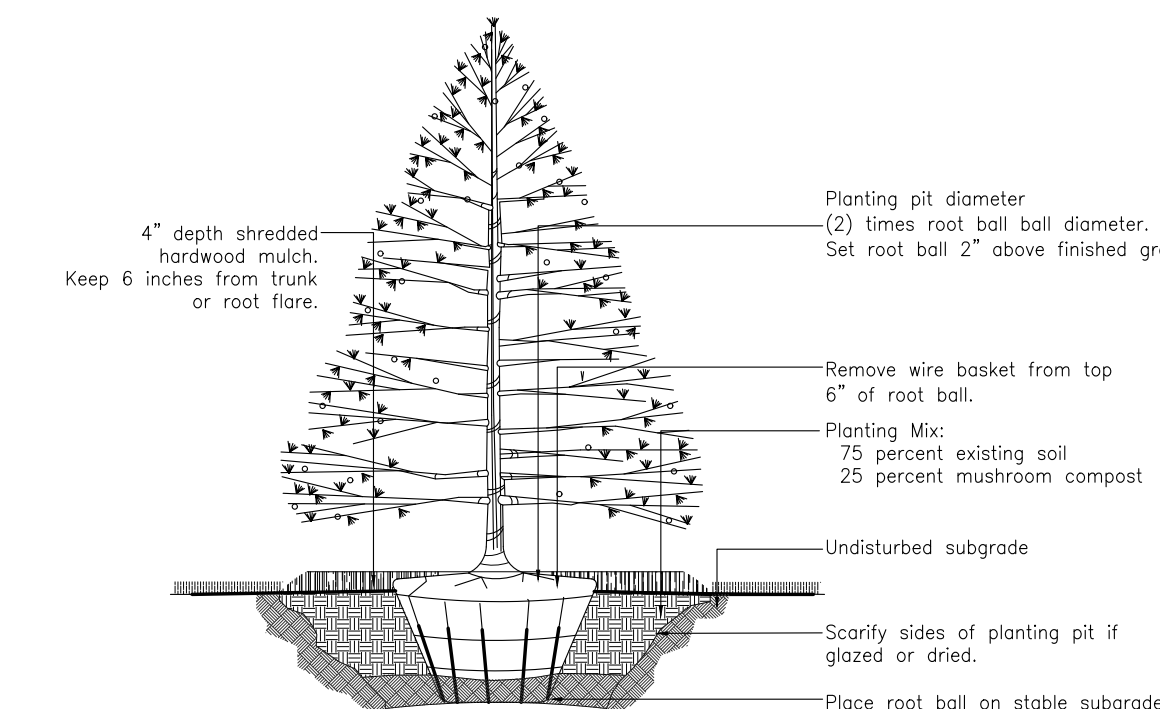
1998 Melissa Lane
2706, 2717, 2718 Dancoer Drive
Aurora, Illinois

The Missner | Group
1700 West Higgins Road Suite 400
Des Plaines, Illinois 60018

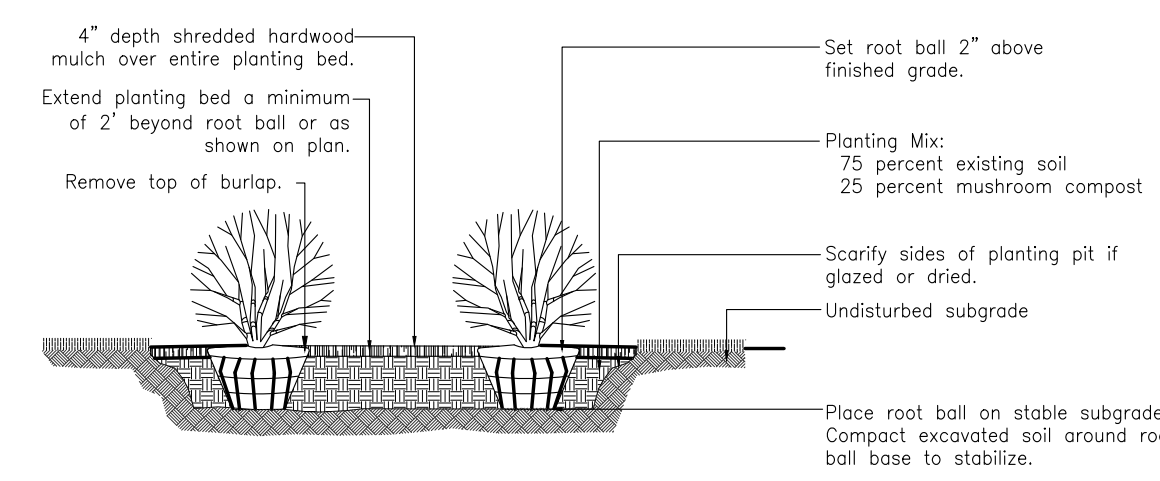
DAVID R. McCALLUM ASSOCIATES, INC.
LANDSCAPE ARCHITECTS
350 N. Milwaukee Avenue | Libertyville, Illinois 60048
T 847.382.0209 | F 847.382.0204



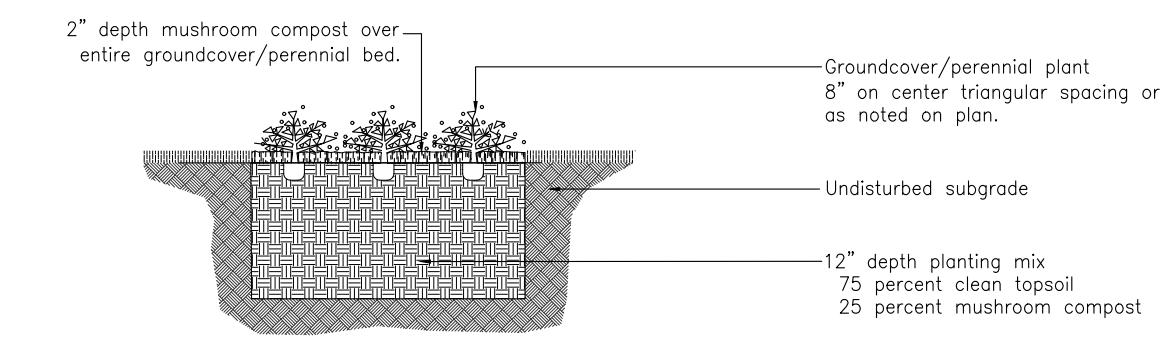
Detail Deciduous Tree Planting



Detail Evergreen Tree Planting



Detail Shrub Planting



Detail Groundcover/Perennial Planting

Landscape Data Table: Planting Material Key

| Symbol | Description | Total |
|--------|-----------------------------------|----------------|
| | Canopy Trees | 82 |
| | Evergreen Trees | 59 |
| | Understory Trees | 35 |
| | Deciduous Shrubs | 532 |
| | Evergreen Shrubs | 170 |
| | Perennials and Ornamental Grasses | 254 |
| | Groundcover | 600 |
| | Turf Hydroseed | 83,238 sq. ft. |
| | Turf Sod | 1888 sq. ft. |

Landscape Data Table: CTEs Provided

| Category | CTE Value | Count Provided | Total CTEs Provided |
|------------------|-----------|----------------|---------------------|
| Canopy Trees | 1 | 82 | 82 |
| Evergreen Trees | 3 | 59 | 19.6 |
| Understory Trees | 3 | 35 | 11.6 |
| Deciduous Shrubs | 20 | 532 | 26.6 |
| Evergreen Shrubs | 20 | 170 | 8.5 |
| TOTAL: | | 878 | 148.3 |

Plant List for 88 Orchard Industrial

| Shade Trees Key | Qty. | Size | Botanical Name | Common Name | Remarks | Percentage |
|-----------------|------|------|--|-------------------------------|---------|-----------------------|
| ACF | 6 | 2.5" | Acer x freemanii 'Autumn Blaze' | Autumn Blaze Freeman Maple | BB | 8.1 |
| ARA | 5 | 2.5" | Acer rubrum 'Armstrong' | Armstrong Red Maple | BB | 6.8 |
| CAR | 4 | 2.5" | Carpinus caroliniana | American Hornbeam | BB | 5.4 |
| CEO | 7 | 2.5" | Celtis occidentalis | Common Hackberry | BB | 9.5 |
| COR | 4 | 2.5" | Corylus colurna | Turkish Filbert | BB | 5.4 |
| GPS | 11 | 2.5" | Ginkgo biloba 'Princeton Sentry' | Princeton Sentry Ginkgo | BB | 14.8 |
| GTS | 2 | 2.5" | Gleditsia triacanthos var. inermis 'Skyline' | Skyline Thornless Honeylocust | BB | 8.1 |
| OTD | 6 | 2.5" | Gymnocladus dioica | Kentucky Coffeetree | BB | 8.1 |
| OST | 4 | 2.5" | Ostrya virginiana | Ironwood | BB | 5.4 |
| QUB | 7 | 2.5" | Quercus bicolor | Swamp White Oak | BB | 9.5 |
| QUC | 4 | 2.5" | Quercus muehlenbergii | Chinkapin Oak | BB | 5.4 |
| QUR | 3 | 2.5" | Quercus rubra | Red Oak | BB | 4.0 |
| ULM | 7 | 2.5" | Ulmus x 'Morton Glossy' | Triumph Elm | BB | 9.5 |
| | | | | | | 74 shade trees = 100% |

8 2.5" Existing parkway trees @ Melissa Lane

NOTE: Parkway trees shall be evaluated to determine form, condition and health prior to construction. All trees found to be unacceptable by the City of Aurora shall be replaced with 2.5" caliper trees of the same species, or as required by the City.

| Evergreen Trees Key | Qty. | Size | Botanical Name | Common Name | Remarks | Percentage |
|---------------------|------|------|------------------------|-----------------------|--------------|---------------------------|
| ABC | 11 | 8' | Abies concolor | Concolor Fir | BB | 18.7 |
| JUV | 10 | 8' | Juniperus virginiana | Eastern Redcedar | BB/Unsheared | 16.9 |
| ROD | 10 | 8' | Picea glauca 'Sensata' | Black Hills Spruce | BB | 16.9 |
| PIA | 9 | 8' | Picea abies | Norway Spruce | BB | 15.3 |
| PIC | 8 | 8' | Picea pungens | Colorado Green Spruce | BB | 13.5 |
| PSM | 11 | 8' | Pseudotsuga menziesii | Douglas Fir | BB | 18.7 |
| | | | | | | 59 evergreen trees = 100% |

| Understory Trees Key | Qty. | Size | Botanical Name | Common Name | Remarks | Percentage |
|----------------------|------|------|----------------------------------|--------------------------------|----------|----------------------------|
| AMC | 6 | 8' | Amelanchier canadensis | Shadblow Serviceberry | BB/Clump | 17.1 |
| CCI | 5 | 6' | Crotaegus crusgalli var. inermis | Thornless Cockspur Hawthorn | BB/Clump | 14.3 |
| CLR | 1 | 8' | Cercis canadensis | Eastern Redbud | BB/Clump | 2.9 |
| HMV | 8 | 8' | Hamamelis vernalis | Vernal Witchhazel | BB/Clump | 17.1 |
| MAS | 3 | 8' | Magnolia stellata 'Royal Star' | Royal Star Magnolia | BB/Clump | 8.6 |
| MPP | 7 | 2.5" | Morus 'Purple Prince' | Purple Prince Orbapple | BB | 20.0 |
| SYR | 7 | 2.5" | Syringa reticulata 'Ivory Silk' | Ivory Silk Japanese Tree Lilac | BB | 20.0 |
| | | | | | | 35 understory trees = 100% |

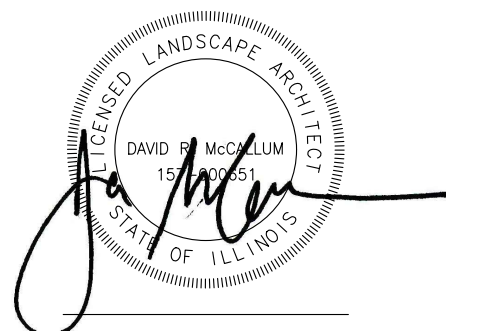
| Deciduous Shrubs Key | Qty. | Size | Botanical Name | Common Name | Remarks | Percentage |
|----------------------|------|------|---|--------------------------------|---------|-----------------------------|
| ARM | 50 | 24" | Aronia melanocarpa Low Scope Mound | Low Scope Mound Chokeberry | BB | 9.4 |
| CLE | 46 | 24" | Clethra alnifolia 'Hummingbird' | Hummingbird Summersweet | BB | 8.7 |
| COT | 26 | 24" | Cotoneaster acutifolius | Peking Cotoneaster | BB | 4.9 |
| CSI | 39 | 24" | Cornus sericea 'Ipsittid' | Island Redosier Dogwood | BB | 7.3 |
| FVB | 57 | 24" | Forsythia viridissima 'Bronze Sensa' | Bronze Dwarf Forsythia | BB | 10.7 |
| HIB | 23 | 24" | Hydrangea paniculata 'Boba' | Boba Hydrangeas | BB | 4.3 |
| RGM | 42 | 24" | Ribes alpinum 'Green Mound' | Green Mound Alpine Currant | BB | 7.9 |
| RHC | 36 | 24" | Rhus aromatica 'Gro-Low' | Gro-Low Fragrant Sumac | BB | 6.8 |
| ROD | 29 | 24" | Rosa 'Madison' | Pink Knock Out Rose | BB | 5.5 |
| SLP | 53 | 24" | Spiraea japonica 'Little Princess' | Little Princess Spirea | BB | 9.9 |
| SMK | 38 | 24" | Syringa patula 'Miss Kim' | Miss Kim Dwarf Lilac | BB | 7.1 |
| VBM | 30 | 24" | Viburnum dentatum 'Christum' | Blue Muffin Arrowwood Viburnum | BB | 5.6 |
| VLI | 34 | 24" | Viburnum dent. KLM seventeen Little Joe | Little Joe Viburnum | BB | 6.4 |
| WEI | 29 | 24" | Weigela florida 'Minuet' | Minuet Weigela | BB | 5.5 |
| | | | | | | 532 deciduous shrubs = 100% |

| Evergreen Shrubs Key | Qty. | Size | Botanical Name | Common Name | Remarks | Percentage |
|----------------------|------|------|---|----------------------------|---------|-----------------------------|
| BDM | 14 | 24" | Buxus x 'Green Mound' | Green Mound Boxwood | BB | 8.2 |
| BUX | 13 | 24" | Buxus x microphylla 'Glencoe' | Chicago Land Green Boxwood | BB | 7.7 |
| JCS | 56 | 24" | Juniperus chinensis var. sargentii | Sargent Juniper | BB | 32.9 |
| JIC | 15 | 24" | Juniperus chinensis 'Kobold's Compact' | Kobold's Compact Juniper | BB | 9.5 |
| JUH | 41 | 24" | Juniperus horizontalis 'Plumosa Compacta' | Compact Andorra Juniper | BB | 24.1 |
| PIN | 16 | 24" | Pinus mugo 'Compacta' | Compact Mugo Pine | BB | 9.4 |
| TMD | 14 | 24" | Taxus x media 'Densiformis' | Dense Yew | BB | 8.2 |
| | | | | | | 170 evergreen shrubs = 100% |

| Perennials, Ornamental Grasses and Groundcovers Key | Qty. | Size | Botanical Name | Common Name | Remarks | Percentage |
|---|------|------|--|--------------------------|-----------|--|
| ACH | 36 | #1 | Achillea 'Moonshine' | Moonshine Yarrow | Container | 4.2 |
| ALL | 45 | #1 | Allium 'Summer Beauty' | Summer Beauty Allium | Container | 5.3 |
| CMK | 17 | #1 | Colamagrostis acutiflora 'Karl Foerster' | Feather Reed Grass | Container | 1.9 |
| DLA | 12 | #1 | Dianthus gratiopsis 'Trevithick' | Firewitch Cheddar Pinks | Container | 1.4 |
| EFC | 600 | 5" | Euconymus fortunei var. coloratus | Purpleleaf Wintercreeper | Pots | 70.3 |
| HG | 33 | #1 | Hemerocallis 'Little Grappie' | Little Grappie Daylily | Container | 3.9 |
| HFM | 36 | #1 | Hemerocallis 'Pardon Me' | Pardon Me Daylily | Container | 4.2 |
| PEN | 38 | #1 | Pennisetum alopecuroides 'Hameln' | Dwarf Fountain Grass | Container | 4.5 |
| SPO | 37 | #1 | Sporobolus heterolepis | Prairie Dropseed | Container | 4.3 |
| | | | | | | 854 perennials, ornamental grasses and groundcovers = 100% |

Note

Plants noted as "Relocated Parkway trees" are for calculations only. Landscape contractor shall provide and install these trees.



DAVID R. McCALLUM
Registered Landscape Architect
State of Illinois No. 157-000651
Expiration Date 08.31.19

Landscape Plan for Podolsky Orchard 88 Phase II Resubdivision

Owner and Petitioner:
Orchard 88 TMG, LLC
1700 West Higgins Road Suite 400
Des Plaines, Illinois 60018

4 City Review Comments 04/27/18

3 City Review Comments 04/10/18

2 City Review Comments 02/02/18

1 For Review 01/11/18

| Mark | Description | Date |
|------|-------------|------|
| | Issuance | |

Number
438015

Scale
Not to scale

File
4380FF9A

Sheet
L20