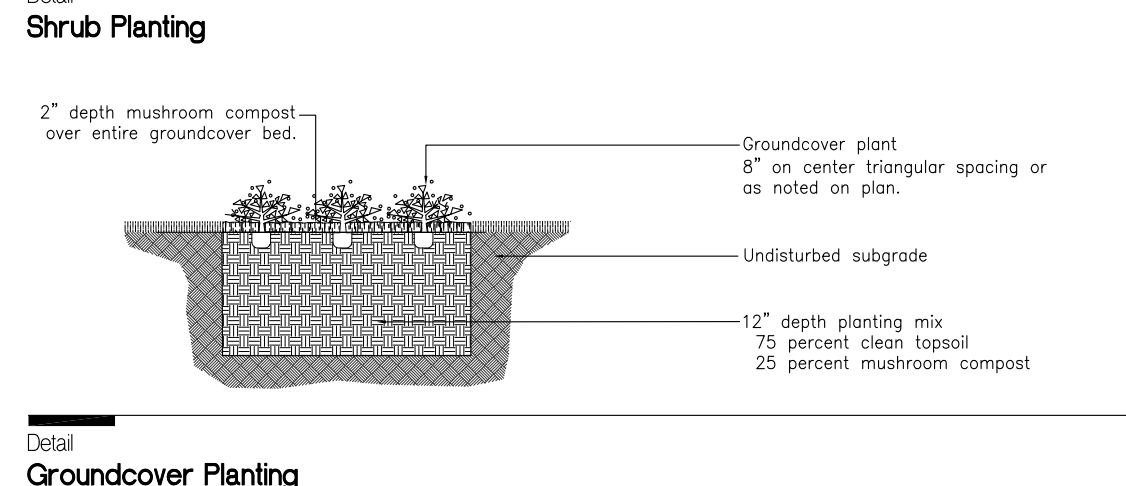
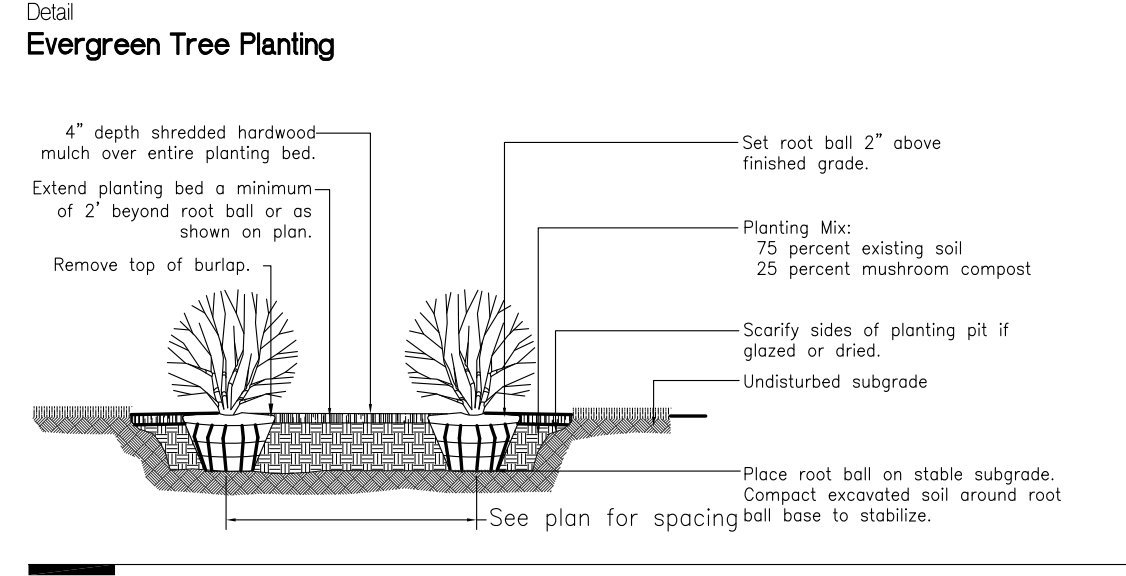
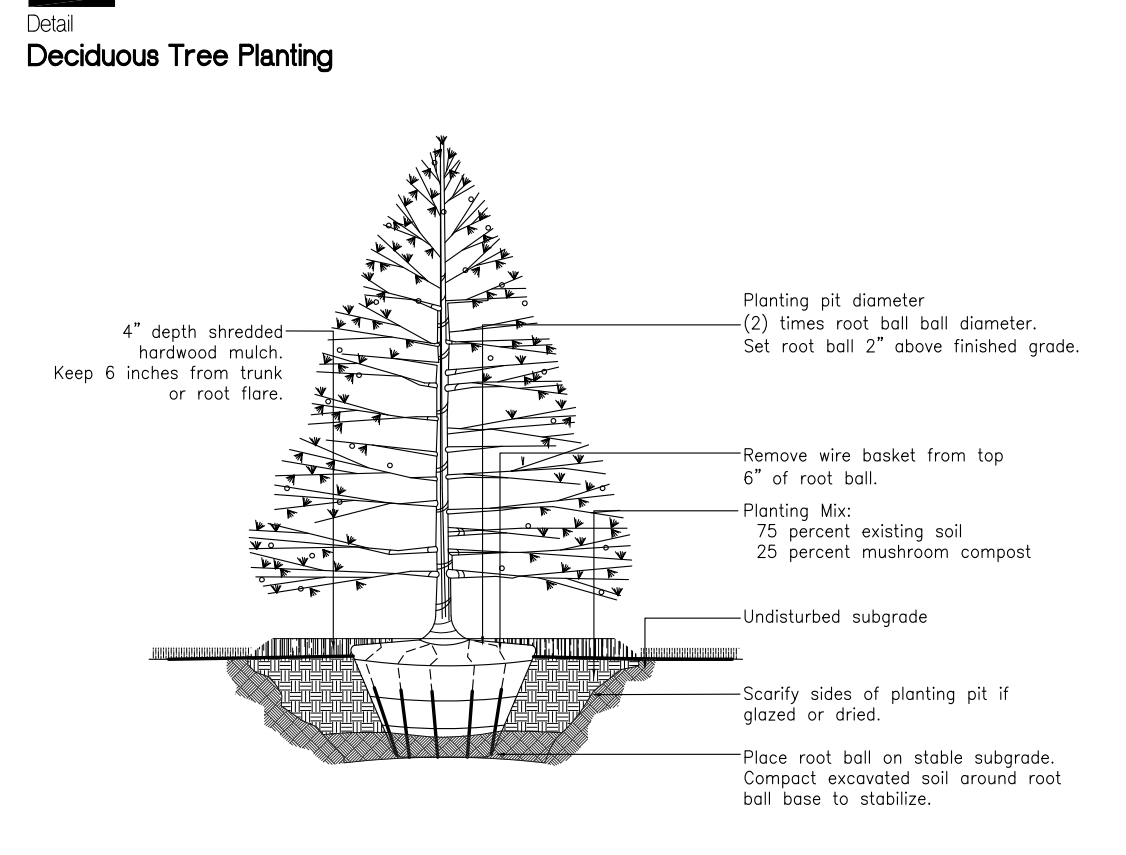
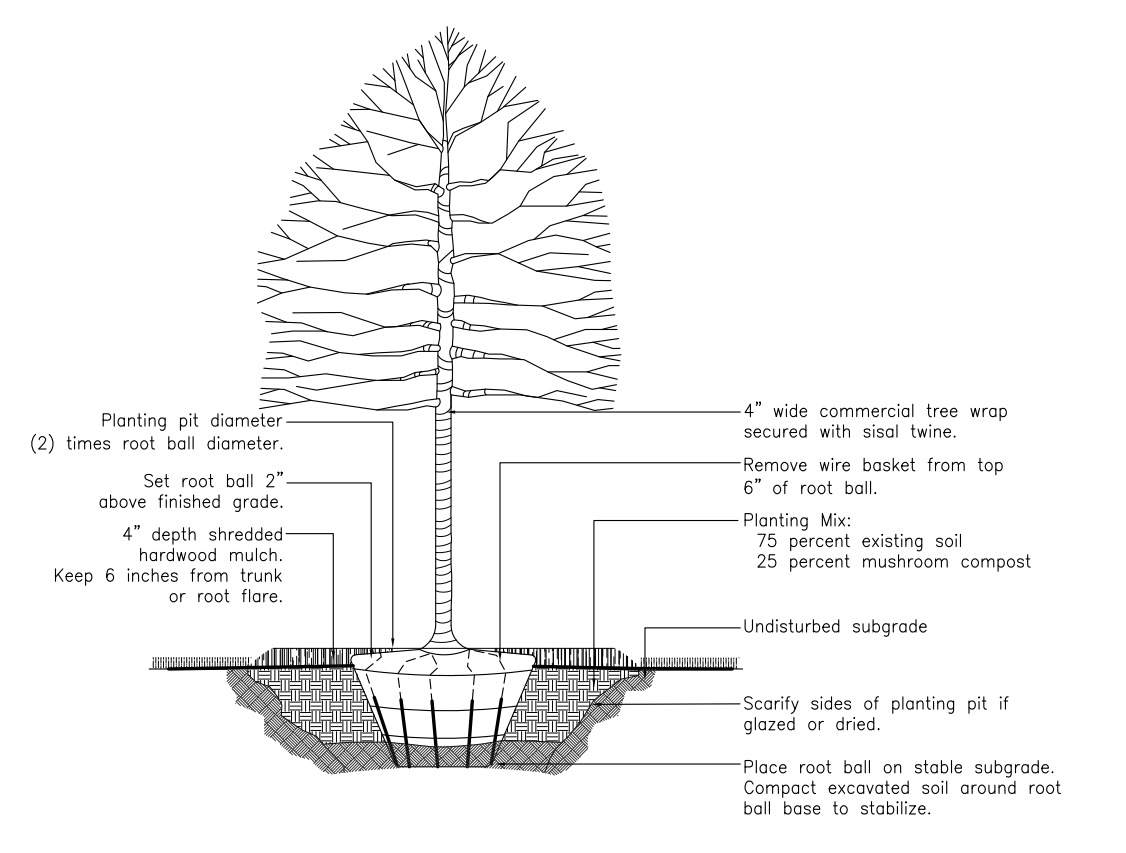
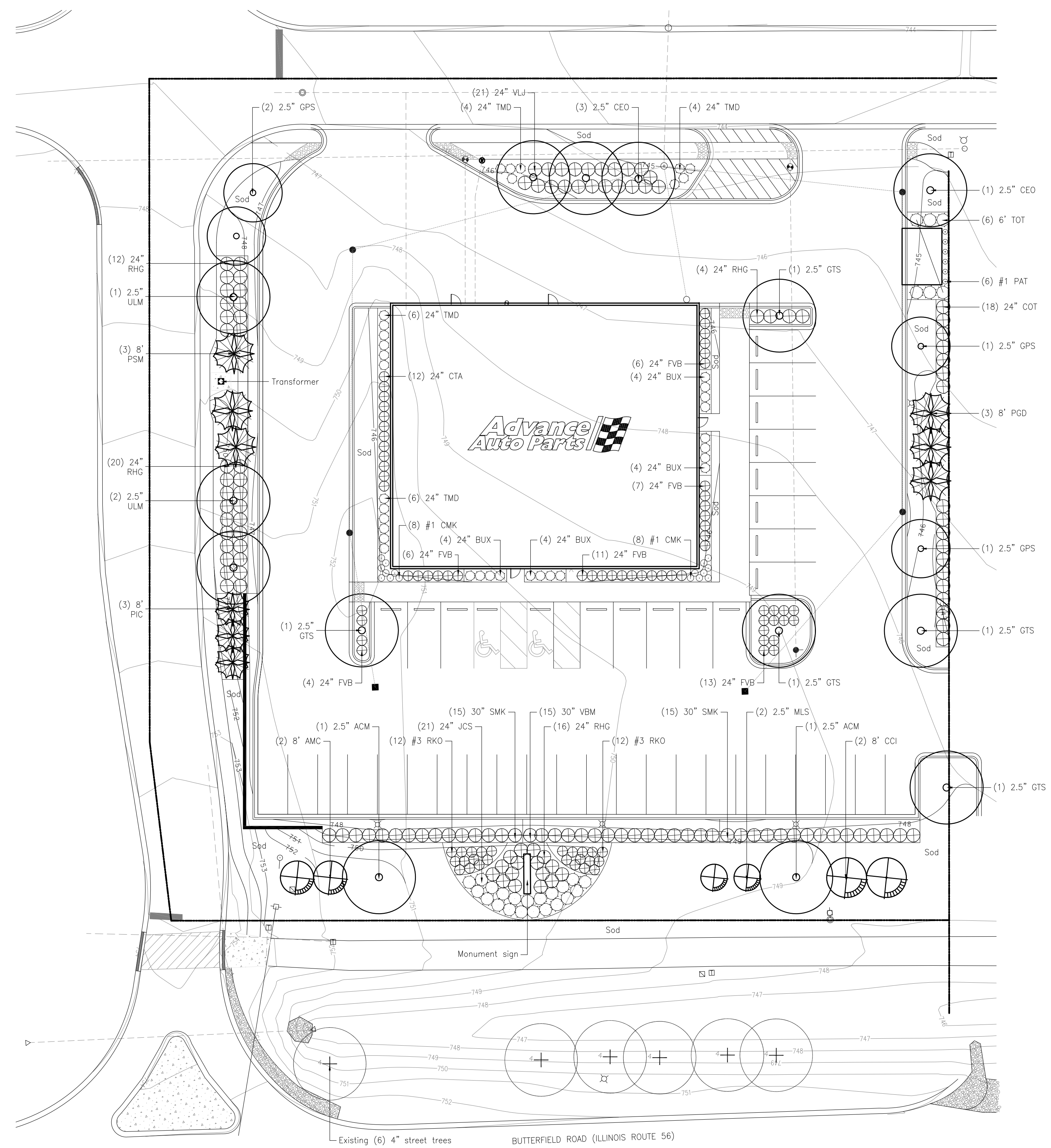


# Landscape Plan for Savannah Crossing Subdivision Lot 9

Plant List					
Shade Trees	Key Qty.	Size	Botanical Name	Common Name	Remarks
ACM	2	2.5"	<i>Acer miyabei</i> 'Morton'	State Street Miyabe Maple	BB
CEO	4	2.5"	<i>Celtis occidentalis</i> 'Prairie Pride'	Prairie Pride Common Hackberry	BB
GPS	4	2.5"	<i>Ginkgo biloba</i> 'Princeton Sentry'	Princeton Sentry Ginkgo	BB
GTS	5	2.5"	<i>Gleditsia triacanthos</i> var. <i>inermis</i> 'Skyline'	Skyline Thornless Honeylocust	BB
ULM	3	2.5"	<i>Ulmus</i> x 'Morton'	Accolade Elm	BB
Evergreen Trees					
Key Qty.	Size	Botanical Name	Common Name	Remarks	
PGD	3	8'	<i>Picea glauca</i> 'Densata'	Black Hills Spruce	BB
PIC	3	8'	<i>Pinus cembra</i>	Swiss Stone Pine	BB
PSM	3	8'	<i>Pseudotsuga menziesii</i>	Douglas Fir	BB
Ornamental Trees					
Key Qty.	Size	Botanical Name	Common Name	Remarks	
AMC	2	8'	<i>Amelanchier canadensis</i>	Shadblow Serviceberry	BB/Clump
COI	2	8'	<i>Crataegus crusgalli</i> var. <i>inermis</i>	Thornless Cockspur Hawthorn	BB/Clump
MLS	2	2.5"	<i>Malus sargentii</i>	Sargent Crabapple	BB/Clump
Deciduous Shrubs					
Key Qty.	Size	Botanical Name	Common Name	Remarks	
COT	18	24"	<i>Cotoneaster acutifolius</i>	Peking Cotoneaster	BB
CTA	12	24"	<i>Cotoneaster apiculatus</i>	Cranberry Cotoneaster	BB
FVB	47	24"	<i>Forsythia viridissima</i> 'Bronxensis'	Bronx Dwarf Forsythia	BB
RHG	52	24"	<i>Rhus aromatica</i> 'Gro-Low'	Gro-Low Fragrant Sumac	BB
RKO	24	#3	<i>Rosa</i> 'RADcon'	Pink Knock Out Rose	Container
SMK	30	30"	<i>Syringa patula</i> 'Miss Kim'	Miss Kim Dwarf Lilac	BB
VBM	15	30"	<i>Viburnum dentatum</i> 'Christom'	Blue Muffin Arrowwood Viburnum	BB
VLJ	21	24"	<i>Viburnum dent.</i> KLM seventeen Little Joe	Little Joe Viburnum	BB
Evergreen Shrubs					
Key Qty.	Size	Botanical Name	Common Name	Remarks	
BUX	16	24"	<i>Buxus x microphylla</i> 'Glencoe'	Chicagoland Green Boxwood	BB
JCS	21	24"	<i>Juniperus chinensis</i> var. <i>sargentii</i>	Sargent Juniper	BB
TMD	20	24"	<i>Taxus x media</i> 'Densiformis'	Dense Yew	BB
TOT	6	6'	<i>Thuja occidentalis</i> 'Technyii'	Mission Arborvitae	BB
Ornamental Grasses and Vines					
Key Qty.	Size	Botanical Name	Common Name	Remarks	
CMK	16	#1	<i>Calamagrostis acutiflora</i> 'Karl Foerster'	Feather Reed Grass	Container
PAT	6	#1	<i>Parthenocissus tricuspidata</i>	Boston Ivy	Container

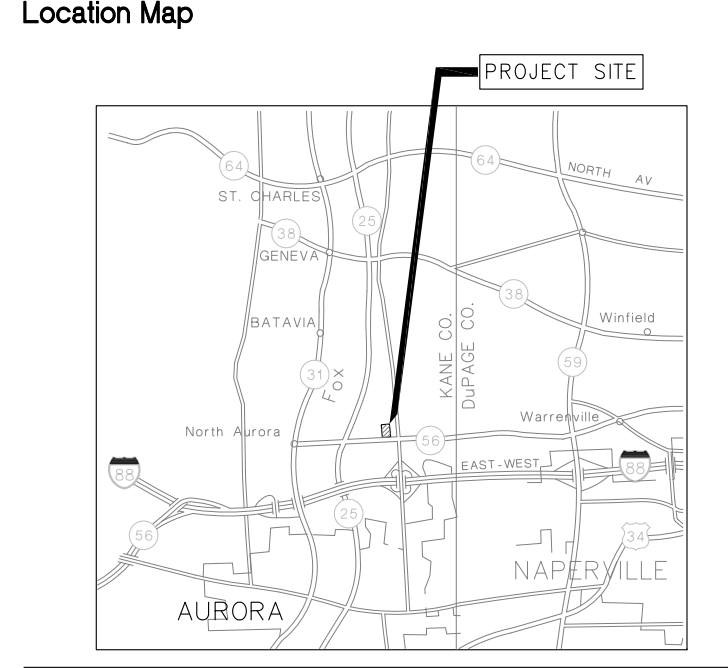


Landscape Material Data Table for Savannah Crossing Subdivision Lot 9				
Symbol	Description	Value	Unit	
●	a) Total Canopy Trees			18
	Acer: State Street Miyabe Maple (2)	11%	Percent of Canopy Trees	
	Celtis: Prairie Pride Common Hackberry (4)	22%	Percent of Canopy Trees	
	Ginkgo: Princeton Sentry Ginkgo (4)	22%	Percent of Canopy Trees	
	Gleditsia: Skyline Thornless Honeylocust (5)	28%	Percent of Canopy Trees	
	Ulmus: Accolade Elm (3)	17%	Percent of Canopy Trees	
●	b) Total Evergreen Trees			9
	Pinus: Swiss Stone Pine (3)	33%	Percent of Evergreen Trees	
	Picea: Black Hills Spruce (3)	33%	Percent of Evergreen Trees	
	Pseudotsuga: Douglas Fir (3)	33%	Percent of Evergreen Trees	
⊕	c) Total Understory Trees			9
	Amelanchier: Shadblow Serviceberry (3)	33%	Percent of Understory Trees	
	Crataegus: Thornless Cockspur Hawthorn (3)	33%	Percent of Understory Trees	
	Malus: Sargent Crabapple (3)	33%	Percent of Understory Trees	
⊕	d) Total Deciduous Shrubs			219
	Cotoneaster: Peking Cotoneaster (18); Cranberry Cotoneaster (12)	13%	Percent of Deciduous Shrubs	
	Forsythia: Bronx Dwarf Forsythia (47)	21%	Percent of Deciduous Shrubs	
	Rhus: Gro-Low Fragrant Sumac (52)	24%	Percent of Deciduous Shrubs	
	Rosa: Pink Knock Out Rose (24)	11%	Percent of Deciduous Shrubs	
	Syringa: Miss Kim Dwarf Lilac (30)	14%	Percent of Deciduous Shrubs	
	Viburnum: Blue Muffin Arrowwood Viburnum (15); Little Joe Viburnum (21)	17%	Percent of Deciduous Shrubs	
○	e) Total Evergreen Shrubs			63
	Buxus: Chicagoland Green Boxwood (16)	25%	Percent of Evergreen Shrubs	
	Juniperus: Sargent Juniper (21)	33%	Percent of Evergreen Shrubs	
	Taxus: Dense Yew (20)	32%	Percent of Evergreen Shrubs	
	Thuja: Mission Arborvitae (6)	10%	Percent of Evergreen Shrubs	
○	f) Total Ornamental Grasses			16
	Calamagrostis: Feather Reed Grass (16)	#1	Size	
○	g) Total Perennials			6
	Parthenocissus: Boston Ivy (6)	#1	Size	



Landscape Data Table for Savannah Crossing Subdivision Lot 9	
Tax/Parcel Identification Number(s) (PINs)	12-36-354-003
Total Property Size	141 Acres
Total Lot Coverage - Buildings and pavement	69,987 Square Feet
Total Lot Coverage - Open Space/Landscaping	49,214 Square Feet
Total Street Frontage	74 Percent
Total Perimeter Yard	15,779 Square Feet
Building Foundation Perimeter	28 Percent
Total High-water Line for all Stormwater Detention/Retention Facilities	983 Linear Feet
Number of Parking Spaces	346 Linear Feet
Total Number of Single Family Corner Lots	Not applicable
Total Number of Residential Dwelling Units	40 Spaces
Buffer Yard	0 Units - Not applicable
Neighborhood Border	0 Linear Feet - Not applicable
0 Linear Feet - Not applicable	0 Linear Feet - Not applicable
Details of the Landscape screening/planting for this development:	35.98 canopy tree equivalents
Landscape screening/planting requirement:	36.25 canopy tree equivalents
Landscape screening/planting provided:	

- ### Legend of Symbols
- Fire hydrants
  - Water structure
  - ⊕ Stormwater structures
  - Gas structure
  - ⊕ Electrical structures
  - ⊗ Street lights
  - ⊕ Telephone structures
  - ⊕ Transformer

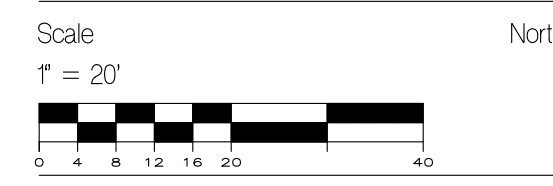


Owner of Record  
TMK Inland Aurora Venture, LLC  
2901 Butterfield Road  
Oak Brook, Illinois 60523

Petitioner  
TMK Inland Aurora Venture, LLC  
2901 Butterfield Road  
Oak Brook, Illinois 60523

Landscape Architect  
David R. McCallum Associates, Inc.  
350 North Milwaukee Avenue  
Libertyville, Illinois 60048

DAVID R. MCCALLUM  
REGISTERED LANDSCAPE ARCHITECT  
STATE OF ILLINOIS NO. 157-000651  
EXPIRATION DATE 08.31.17



**CAMBUROS & THEODORE, LTD.**  
ARCHITECTURE | PLANNING | INTERIOR DESIGN | ENGINEERING  
2454 E. DAMPETER ST., DES PLAINES, IL 60016  
TEL: 847.298.1329 FAX: 847.300.1139  
www.camburusandtheodore.com

EST. 1949

**Inland Real Estate Corporation**  
(PETITIONER)  
TMK INLAND AURORA VENTURE, LLC  
(OWNER)  
TMK INLAND AURORA VENTURE, LLC  
(OWNER)  
(CASE OF INLAND COMMERCIAL PROPERTIES - PART BILLING FY)

2901 BUTTERFIELD ROAD  
OAK BROOK, IL 60523

**Inland Real Estate Corporation**  
(OWNER)  
TMK INLAND AURORA VENTURE, LLC  
(CASE OF INLAND COMMERCIAL PROPERTIES - PART BILLING FY)

2901 BUTTERFIELD ROAD  
AURORA, IL  
BUTTERFIELD RD.  
STORE # 104631

REV.	DATE	DESCRIPTION	REVISIONS
1	6/2/15	ELEVATIONS SUBMITTAL	
2	6/12/15	CITY COMMENTS #1	
3	7/3/15	CITY COMMENTS #2	
4	7/3/15	CITY COMMENTS #3	

DATE: 6/2/15  
SCALE: 5/8" = 1'-0"  
TOTAL AREA: 1,440 SF.

PROJECT: 15-04631  
DRAWN BY: DRY  
CHECK BY: DRY

ALL REPORTS, PLANS, SPECIFICATIONS, FIELD DATA, NOTES AND OTHER DOCUMENTS INCLUDING THIS DESIGN PROFESSIONAL'S SEAL AND SIGNATURE ARE THE PROPERTY OF CAMBUROS & THEODORE, LTD. NO PART OF THIS DESIGN PROFESSIONAL'S CONTRIBUTION MAY BE REPRODUCED OR TRANSMITTED IN ANY FORM OR BY ANY MEANS, ELECTRONIC OR MECHANICAL, INCLUDING PHOTOCOPYING, RECORDING, OR BY ANY INFORMATION STORAGE AND RETRIEVAL SYSTEMS WITHOUT THE WRITTEN PERMISSION OF CAMBUROS & THEODORE, LTD.

**LANDSCAPE PLAN FOR SAVANNAH CROSSING SUBDIVISION LOT 9**

**LP-1**

Scale  
1" = 20'