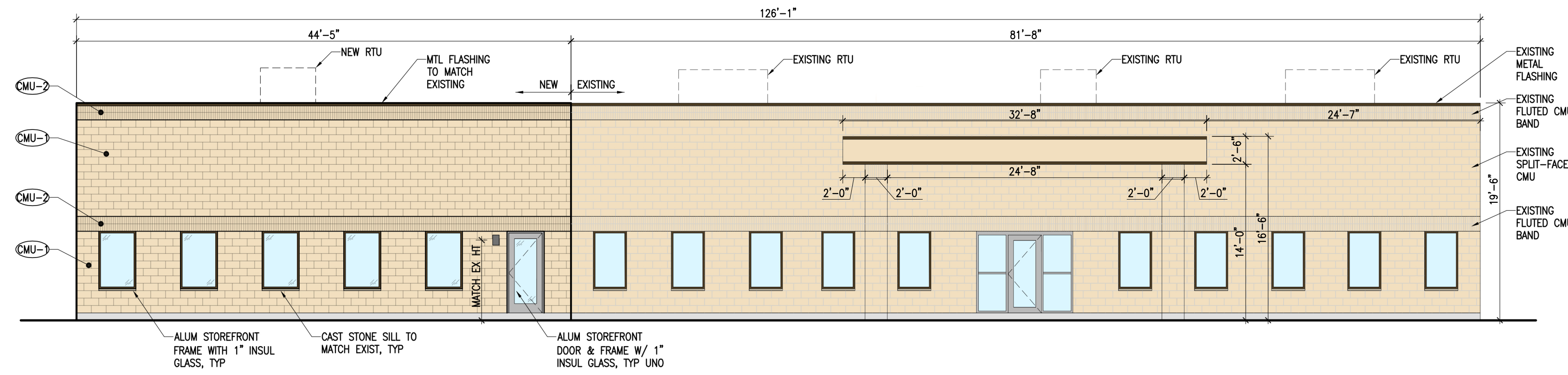


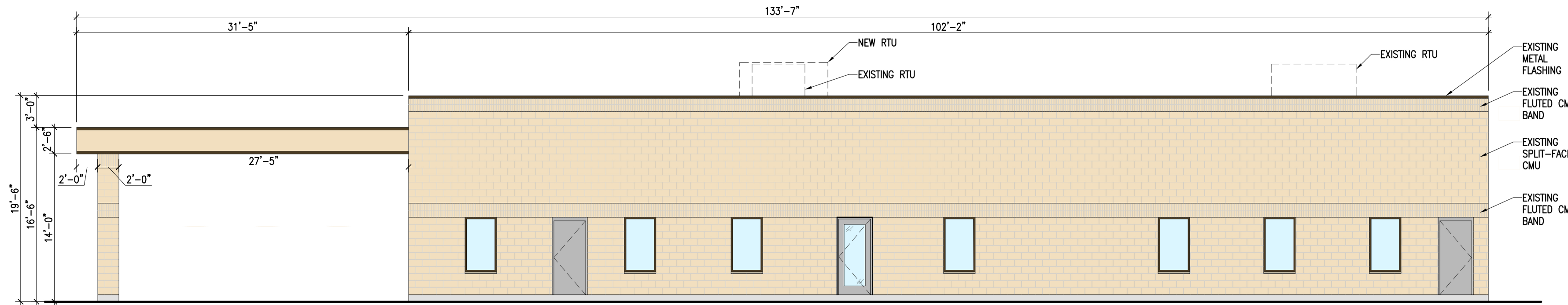
ELEVATIONS

EXTERIOR ELEVATION LEGEND		
HATCH PATTERN	TAG	DESCRIPTION
	CMU-1	SPLIT-FACE CMU TO MATCH EXISTING SPLIT-FACE CMU
	CMU-2	FLUTED CMU TO MATCH EXISTING FLUTED CMU



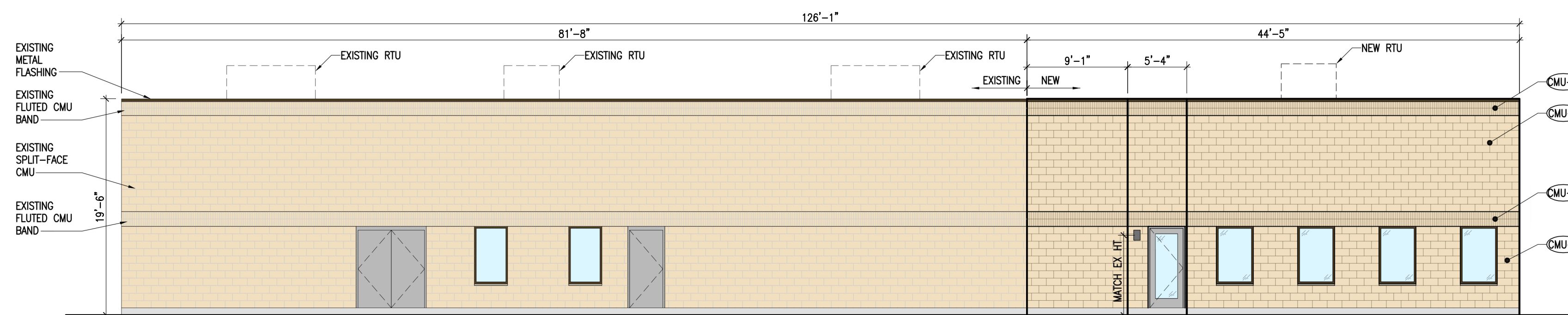
SOUTH ELEVATION

1/8" = 1'-0"



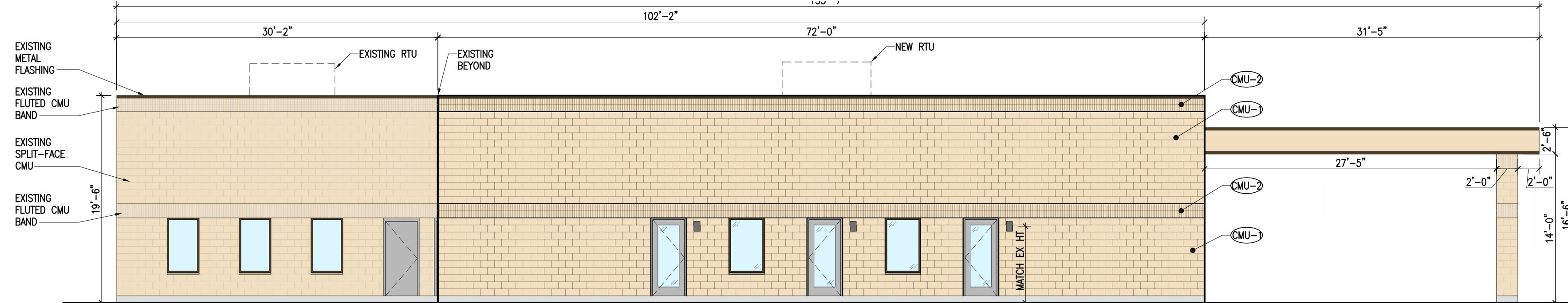
EAST ELEVATION

1/8" = 1'-0"



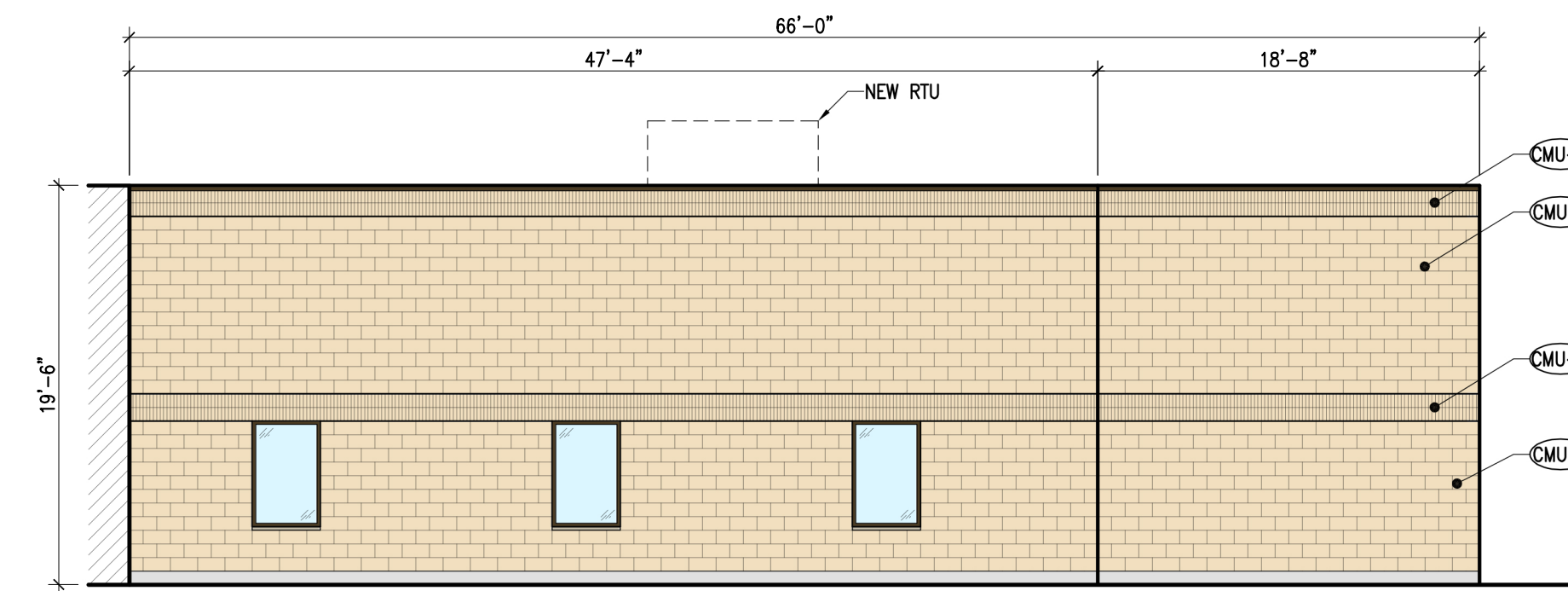
NORTH ELEVATION

1/8" = 1'-0"



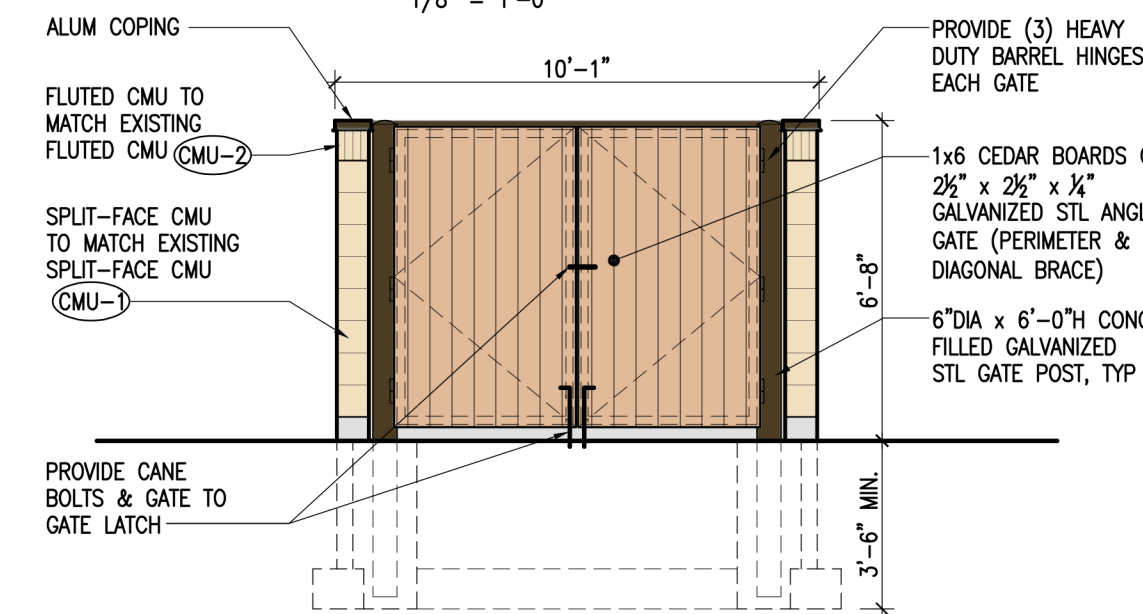
WEST ELEVATION

1/8" = 1'-0"



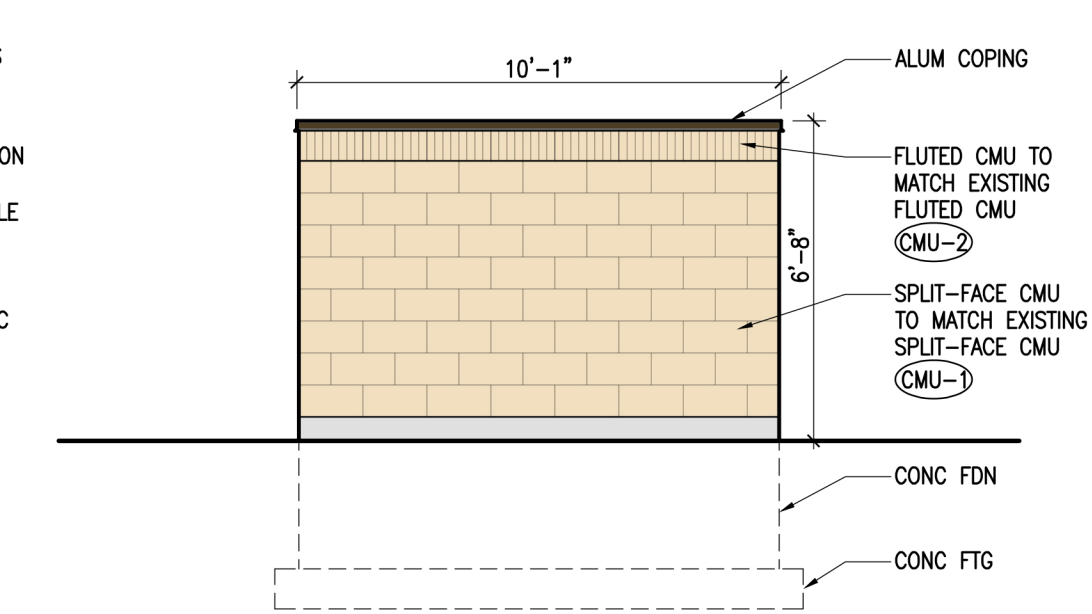
PARTIAL EAST ELEVATION

1/8" = 1'-0"



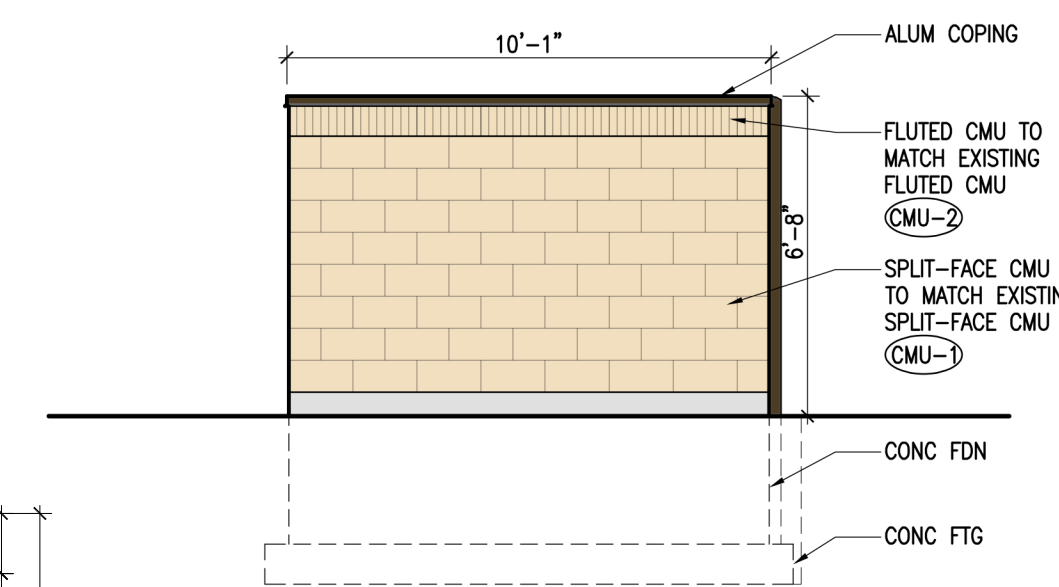
TRASH ENCLOSURE - FRONT ELEVATION (SOUTH)

1/4" = 1'-0"



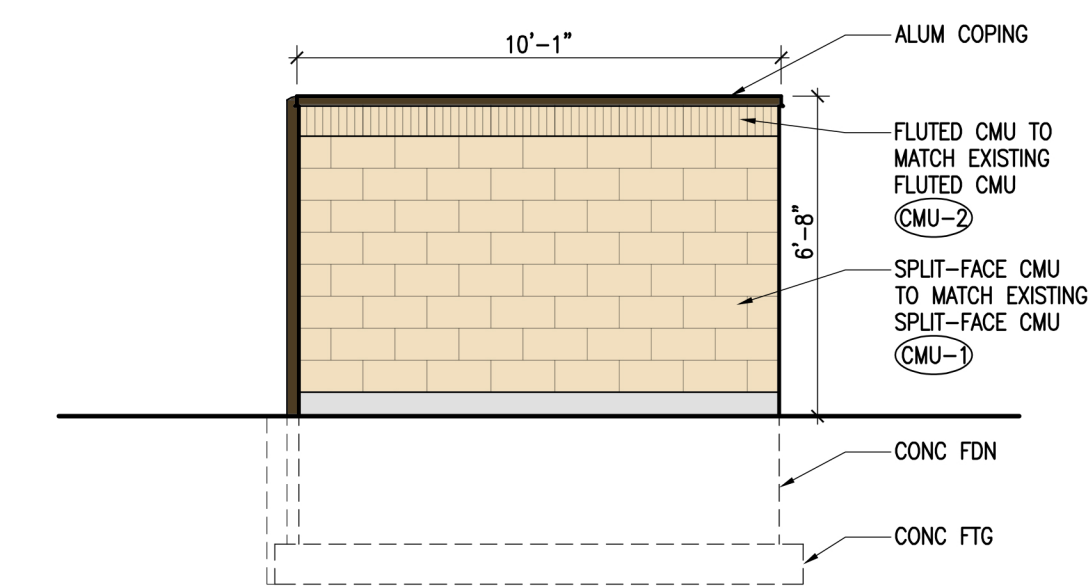
TRASH ENCLOSURE - BACK ELEVATION (NORTH)

1/4" = 1'-0"



TRASH ENCLOSURE - SIDE ELEVATION (WEST)

1/4" = 1'-0"



TRASH ENCLOSURE - SIDE ELEVATION (EAST)

1/4" = 1'-0"

Elevation Data Table: Elevations		
Description	Value	Unit
a) Building Height in feet (typical)	19.50	feet
b) Total Building Square Footage (typical)	10,844.00	Square Feet
c) First Floor Building Square Footage (typical)	10,844.00	Square Feet
d) Number of building stories (typical)	1.00	Square Feet
e) Exterior Material List (including colors) for all buildings and accessory structures: SPLIT-FACEDCMU WITH FLUTED CMU ACCENT BANDS - TAN		

PROJECT
LITTLE BLOSSOM MONTESSORI SCHOOL
ADDITION & RENOVATION
758 SHORELINE DRIVE
AURORA, IL 60504
FOR
LITTLE BLOSSOM MONTESSORI SCHOOL
PROJECT NUMBER | 923107

ISSUE
04/05/2024 FOR FINAL PLAN APPROVAL

RE-ISSUE
05/20/2024 REVISION 1

DESCRIPTION
ELEVATIONS

TORCH ARCHITECTURE INC
300 E 5TH AVE STE 102 NAPERVILLE IL 60563
P 630 420 1900 TORCHARCHITECTURE.COM

A3 01