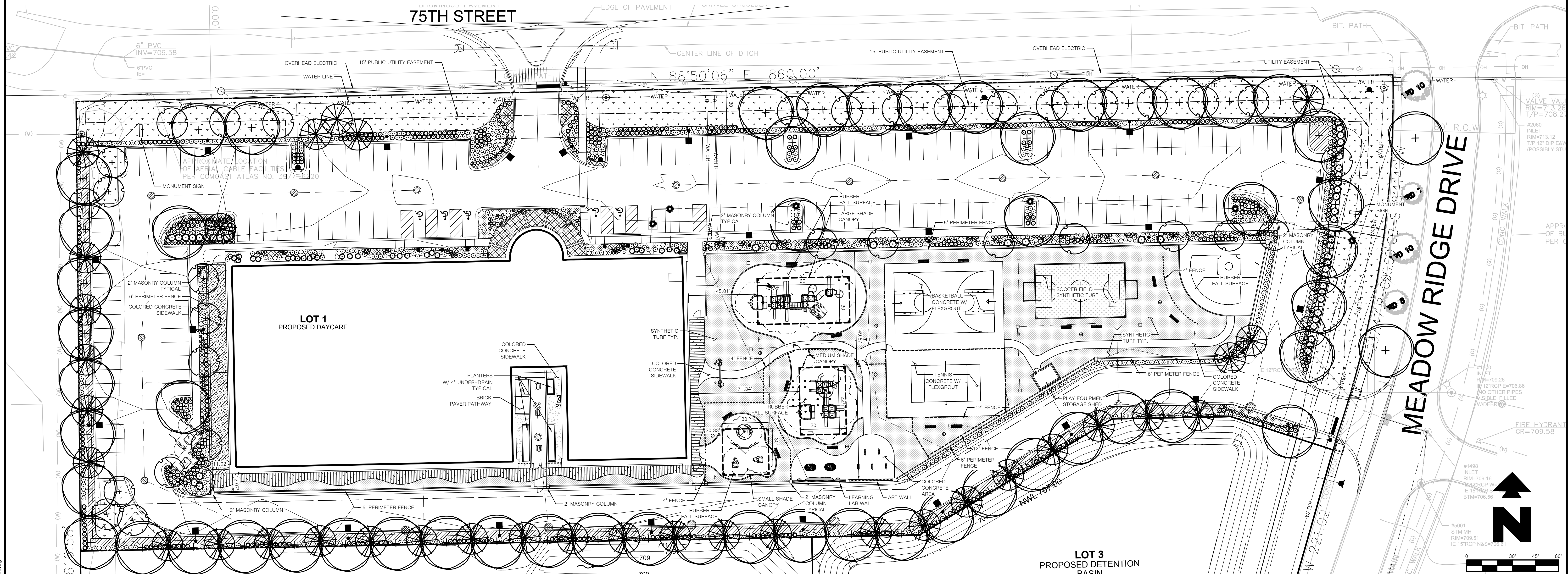


LANDSCAPE PLAN FOR CLA AURORA LLC SUBDIVISION LOT 1

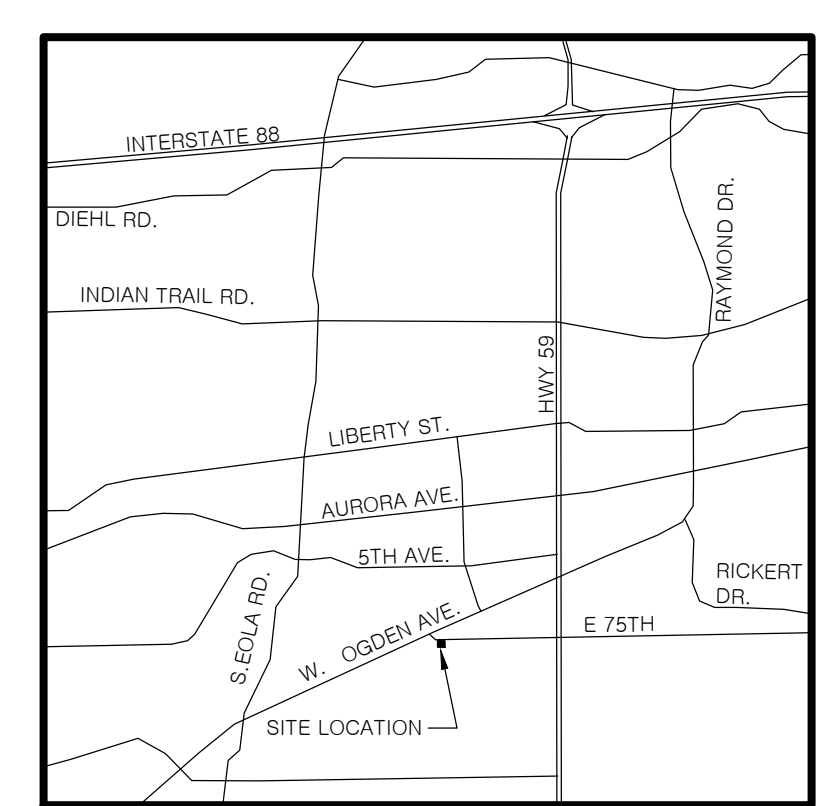


LOT 1 LANDSCAPE SUMMARY

Planting Material Key	Count
Canopy Trees (minimum size 2.5 caliper) Count:	57
Evergreen Trees (minimum size 6 feet) Count:	34
Understory Trees (minimum size 2.5 caliper or 8 feet #multi-stemmed) Count:	11
Evergreen Shrubs (minimum of 18 inches) Count:	681
Deciduous Shrubs (minimum of 18 inches) Count:	352
Ornamental Grasses Count:	367
Perennials Count:	739
Annals Count:	1252
Groundcover Square Footage:	+5,006
Turf (Seeded) Square Footage:	0
Turf (Sod) Square Footage:	+26,512

Landscape Data Table: CTEs Provided			
CTE Value	Count Provided	Total CTEs Provided	
1	57	57	
3	34	11	
3	35	12	
20	+932	+47	
20	+681	+34	
Total:	1739	161	

THE INFORMATION CONTAINED IN THE LANDSCAPE SUMMARY TABLES HAS BEEN MODIFIED TO REPRESENT THE INFORMATION SHOWN ON THE PLAN ABOVE. IN THE EVENT A DISCREPANCY OCCURS BETWEEN THE DEVELOPMENT TABLES AND CALCULATORS PROVIDED BY THE CITY, THE INFORMATION CONTAINED ON THIS SHEET ALONG WITH THE GRAPHIC DEPICTION OF INFORMATION SHALL PREVAIL.



Vicinity Map

Not to Scale
PART OF THE SOUTHWEST QUARTER OF SECTION 28, TOWNSHIP 38 NORTH, RANGE 9 EAST OF THE THIRD PRINCIPAL MERIDIAN, IN DUPAGE COUNTY, ILLINOIS.

LEGEND	
	SHADE STRUCTURE
	PLAYGROUND EQUIPMENT FALL ZONE
	6" CONCRETE HEADER
	24" CONCRETE HEADER
	4" AGE SEPARATING FENCE
	12" TENNIS COURT FENCE
	STAMPED CONCRETE BOARDWALK
	COLORED CONCRETE
	CONCRETE
	SYNTHETIC TURF

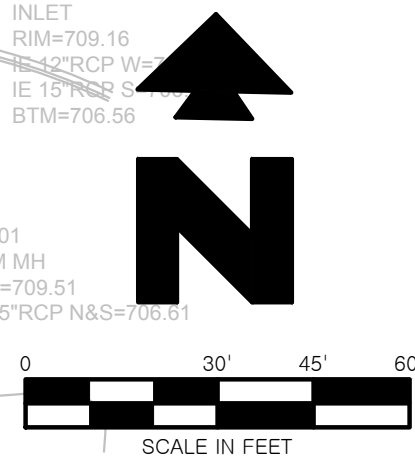
NOTES	
1A	GRASSED AREA (SOLID SOD)

NOTE TO CONTRACTOR:
DIMENSIONS SHOWN ON THIS SHEET ARE FOR REFERENCE ONLY. CONTRACTOR IS TO SEE DETAILS, MANUFACTURE SPECIFICATIONS AND HORIZONTAL CONTROL PLAN FOR PLAYGROUND LAYOUT.
CONTRACTOR TO CONFIRM LAYOUT OF BUILDING AS IT WAS INTENDED PRIOR TO COMMENCEMENT OF PLAYGROUND LAYOUT. IF DISCREPANCIES OCCUR, CONTRACTOR IS TO CONTACT THE ENGINEER PRIOR TO PLAYGROUND LAYOUT.

LOT 3
PROPOSED DETENTION BASIN
60,015 S.F.

V3_Lots :2
Area : 60015.25

MEADOW RIDGE DRIVE



DATE	REVISION	DESCRIPTION
3/31/16	1	CITY COMMENTS
3/26/16	2	CITY COMMENTS

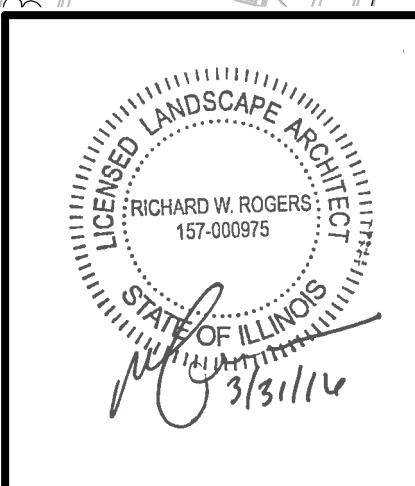
CEI PROJECT NO. 28404 INITIAL DATE 3/30/16 DPOR MAP RYE RYE
CEI PROJECT NO. INITIAL DATE DPOR PM DES DRW

CEI Engineering Associates, Inc.
ENGINEERS PLANNERS SURVEYORS
LANDSCAPE ARCHITECTS ENVIRONMENTAL SCIENTISTS

3030 LBJ Freeway, Suite 100 (972)488-3737
Dallas, TX 75234 FAX (972)488-6732

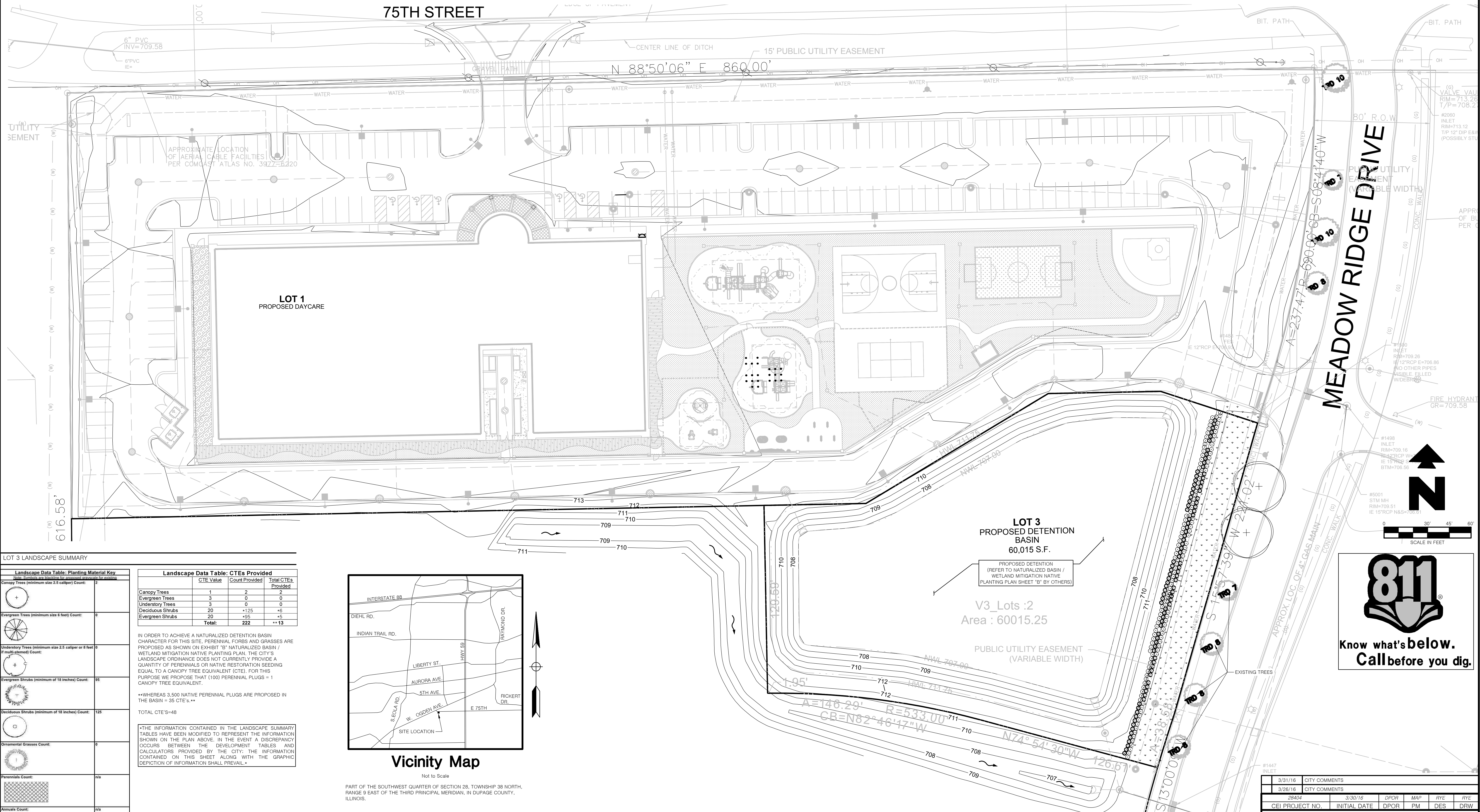
CHILDREN'S LEARNING ADVENTURE
75TH AND MEADOWRIDGE DR.
AURORA, IL

LANDSCAPE PLAN REV DATE 3/30/16 SHEET NO. L6
REV-3



JOB # 28404 DRAWING: 28404-CLA-LP-DST Submittal-2.dwg LAST SAVED BY: REVIEWS LOCATION: P:\28404\28404-CLA-LP-DST Submittal-2.dwg

LANDSCAPE PLAN FOR CLA AURORA LLC SUBDIVISION LOT 3



LOT 3 LANDSCAPE SUMMARY

Landscape Data Table: Planting Material Key	
Canopy Trees (minimum size 2.5 caliper) Count:	2
Evergreen Trees (minimum size 6 feet) Count:	0
Understory Trees (minimum size 2.5 caliper or 8 feet 0" multi-stemmed) Count:	0
Evergreen Shrubs (minimum of 18 inches) Count:	35
Deciduous Shrubs (minimum of 18 inches) Count:	125
Ornamental Grasses Count:	0
Perennials Count:	n/a
Annals Count:	n/a
Groundcover Square Footage:	n/a
Turf (Seeded) Square Footage:	n/a
Turf (Sod) Square Footage:	5,930

Landscape Data Table: CTEs Provided			
CTE Value	Count Provided	Total CTEs Provided	
1	2	2	
3	0	0	
3	0	0	
20	+125	+6	
20	+95	+5	
Total:	222	+13	

IN ORDER TO ACHIEVE A NATURALIZED DETENTION BASIN CHARACTER FOR THIS SITE, PERENNIAL FORBS AND GRASSES ARE PROPOSED AS SHOWN ON EXHIBIT "B" NATURALIZED BASIN / WETLAND MITIGATION NATIVE PLANTING PLAN. THE CITY'S LANDSCAPE ORDINANCE DOES NOT CURRENTLY PROVIDE A QUANTITY OF PERENNIALS OR NATIVE RESTORATION SEEDING EQUAL TO A CANOPY TREE EQUIVALENT (CTE). FOR THIS PURPOSE WE PROPOSE THAT (100) PERENNIAL PLUGS = 1 CANOPY TREE EQUIVALENT.

••WHEREAS 3,500 NATIVE PERENNIAL PLUGS ARE PROPOSED IN THE BASIN = 35 CTE's••

TOTAL CTE'S=48

•THE INFORMATION CONTAINED IN THE LANDSCAPE SUMMARY TABLES HAVE BEEN MODIFIED TO REPRESENT THE INFORMATION SHOWN ON THE PLAN ABOVE. IN THE EVENT A DISCREPANCY OCCURS BETWEEN THE DEVELOPMENT TABLES AND CALCULATORS PROVIDED BY THE CITY, THE INFORMATION CONTAINED ON THIS SHEET ALONG WITH THE GRAPHIC DEPICTION OF INFORMATION SHALL PREVAIL.



Vicinity Map
Not to Scale

PART OF THE SOUTHWEST QUARTER OF SECTION 28, TOWNSHIP 38 NORTH, RANGE 9 EAST OF THE THIRD PRINCIPAL MERIDIAN, IN DUPAGE COUNTY, ILLINOIS.

NOTES
1A GRASSED AREA (SOLID SOD)

NOTE TO CONTRACTOR:
DIMENSIONS SHOWN ON THIS SHEET ARE FOR REFERENCE ONLY. CONTRACTOR IS TO SEE DETAILS, MANUFACTURE SPECIFICATIONS AND HORIZONTAL CONTROL PLAN FOR PLAYGROUND LAYOUT.
CONTRACTOR TO CONFIRM LAYOUT OF BUILDING AS IT WAS INTENDED PRIOR TO COMMENCEMENT OF PLAYGROUND LAYOUT. IF DISCREPANCIES OCCUR, CONTRACTOR IS TO CONTACT THE ENGINEER PRIOR TO PLAYGROUND LAYOUT.

811
Know what's below.
Call before you dig.

REV	DATE	CITY COMMENTS	DPOR	MAP	RYE	RYE
3/31/16						
3/26/16						
28404	3/30/16		DPOR	MAP	RYE	RYE
CEI PROJECT NO.	INITIAL DATE	DPOR	PM	DES	DRW	

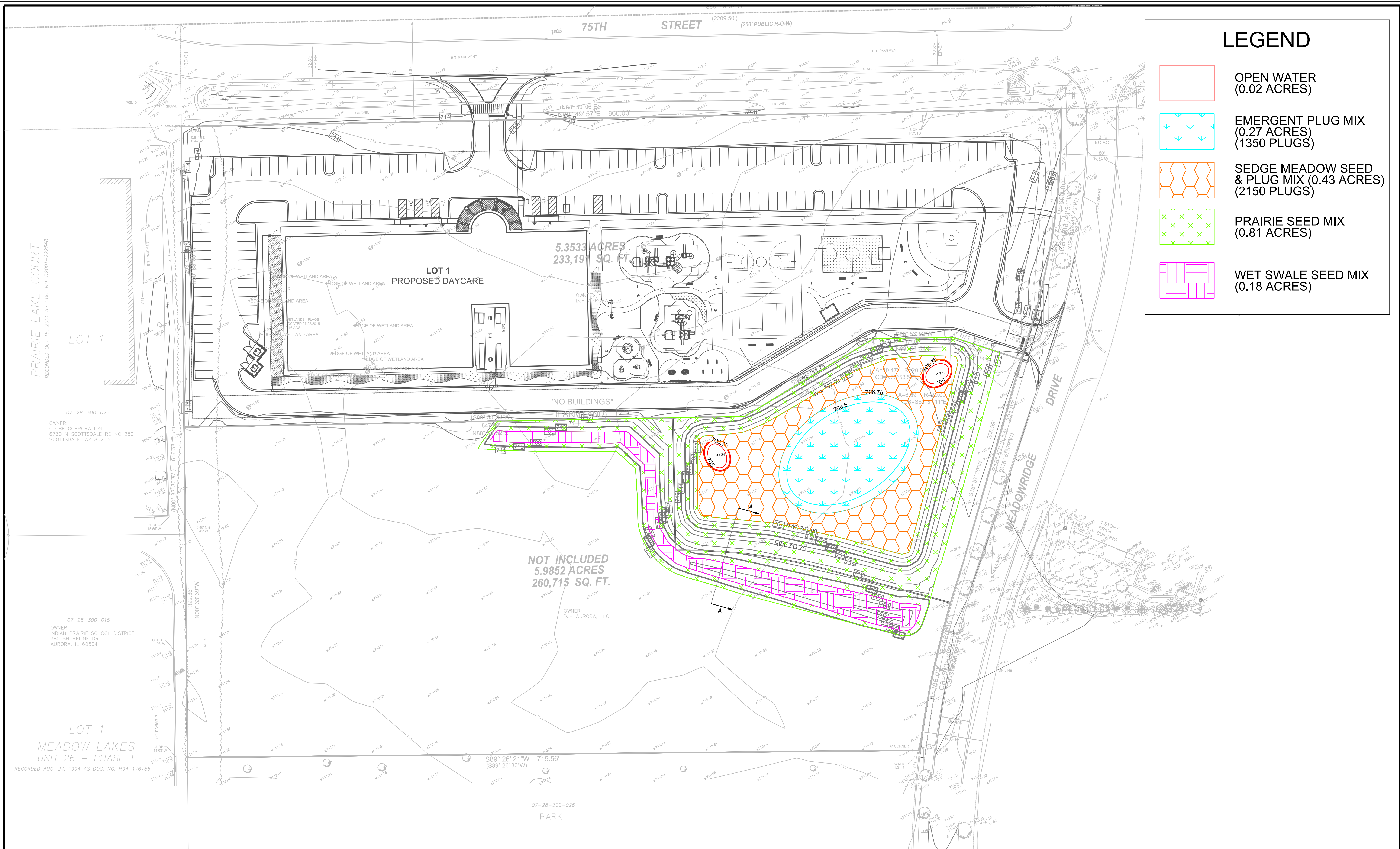
CEI Engineering Associates, Inc.
ENGINEERS • PLANNERS • SURVEYORS
LANDSCAPE ARCHITECTS • ENVIRONMENTAL SCIENTISTS

3030 LBJ Freeway, Suite 100 (972)488-3737
Dallas, TX 75234 FAX (972)488-6732

CHILDREN'S LEARNING ADVENTURE
75TH AND MEADOWRIDGE DR.
AURORA, IL

LANDSCAPE PLAN REV DATE 3/30/16 REV-3 SHEET NO. L6.1

JOB # 28404 DRAWING: 28404-CLA-LP-DST Submittal-2.dwg REVITTS LOCATION: P:\28404\28404-CLA-LP-DST Submittal-2.dwg



LEGEND	
	OPEN WATER (0.02 ACRES)
	EMERGENT PLUG MIX (0.27 ACRES) (1350 PLUGS)
	SEDGE MEADOW SEED & PLUG MIX (0.43 ACRES) (2150 PLUGS)
	PRAIRIE SEED MIX (0.81 ACRES)
	WET SWALE SEED MIX (0.18 ACRES)

PRAIRIE LAKE COURT
RECORDED OCT 16, 2001 AS DOC. NO. R2001-222548

LOT 1

07-28-300-025
OWNER:
GLOBE CORPORATION
6730 N SCOTTSDALE RD NO 250
SCOTTSDALE, AZ 85253

07-28-300-015
OWNER:
INDIAN PRAIRIE SCHOOL DISTRICT
780 SHORELINE DR
AURORA, IL 60504

LOT 1
MEADOW LAKES
UNIT 26 - PHASE 1
RECORDED AUG. 24, 1994 AS DOC. NO. R94-176786

NOT INCLUDED
5.9852 ACRES
260,715 SQ. FT.
OWNER:
D.J.H. AURORA, LLC

S89° 26' 21"W 715.56'
(S89° 26' 30"W)

07-28-300-026
PARK

V3 Companies
7325 Janes Avenue
Woodridge, IL 60517
630.724.9200 phone
630.724.9202 fax
www.v3co.com

REVISIONS					
NO.	DATE	DESCRIPTION	NO.	DATE	DESCRIPTION
1	03-25-16	REVISED PER CITY REVIEW			

SEAL:

PROJECT NO.: 15105
DESIGNED BY: GRM
FILE NAME: EXHB_mit
DRAWN BY: AMM
ORIGINAL ISSUE DATE: 02-15-16
CHECKED BY: SJB
SCALE: 1" = 40'
PROJECT MANAGER: DLG

CLAUDE A. AURORA
ILLINOIS

NATURALIZED BASIN / WETLAND MITIGATION
NATIVE PLANTING PLAN

DRAWING NO. B