

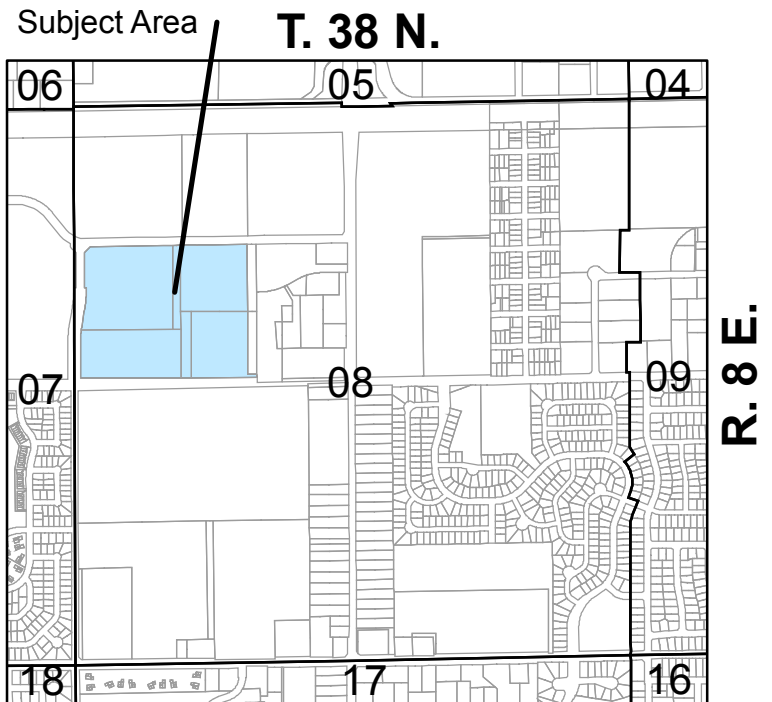
Legal Description

PARCEL I
LOTS 3 AND 4 (EXCEPT THE EAST 85 FEET THEREOF) IN UNIT NO. ONE, PRIME BUSINESS PARK, ACCORDING TO THE PLAT THEREOF RECORDED APRILS 12, 2000 AS DOCUMENT 2000K026550, IN THE CITY OF AURORA, KANE COUNTY, ILLINOIS.

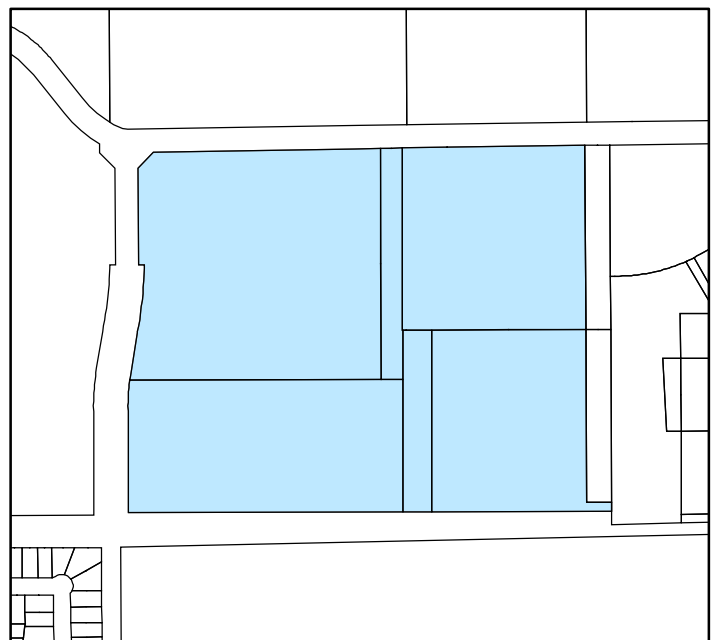
PARCEL II
LOT 2 IN UNIT NO. ONE, PRIME BUSINESS PARK ACCORDING TO THE PLAT THEREOF RECORDED APRIL 12, 2000 AS DOCUMENT 2000K026550, IN THE CITY OF AURORA, KANE COUNTY, ILLINOIS.

PARCEL III
LOT 1 IN UNIT NO. ONE, PRIME BUSINESS PARK, ACCORDING TO THE PLAT THEREOF RECORDED APRIL 12, 2000 AS DOCUMENT 2000K26550, IN THE CITY OF AURORA, KANE COUNTY, ILLINOIS.

Locator Map



Actual Area



PIN(s)

15-08-176-001
15-08-176-003
15-08-176-004
15-08-152-006
15-08-152-007
15-08-152-003

Common Address

1600 Sequoia Drive
1785 N. Edgelawn Drive
Vacant Lot

