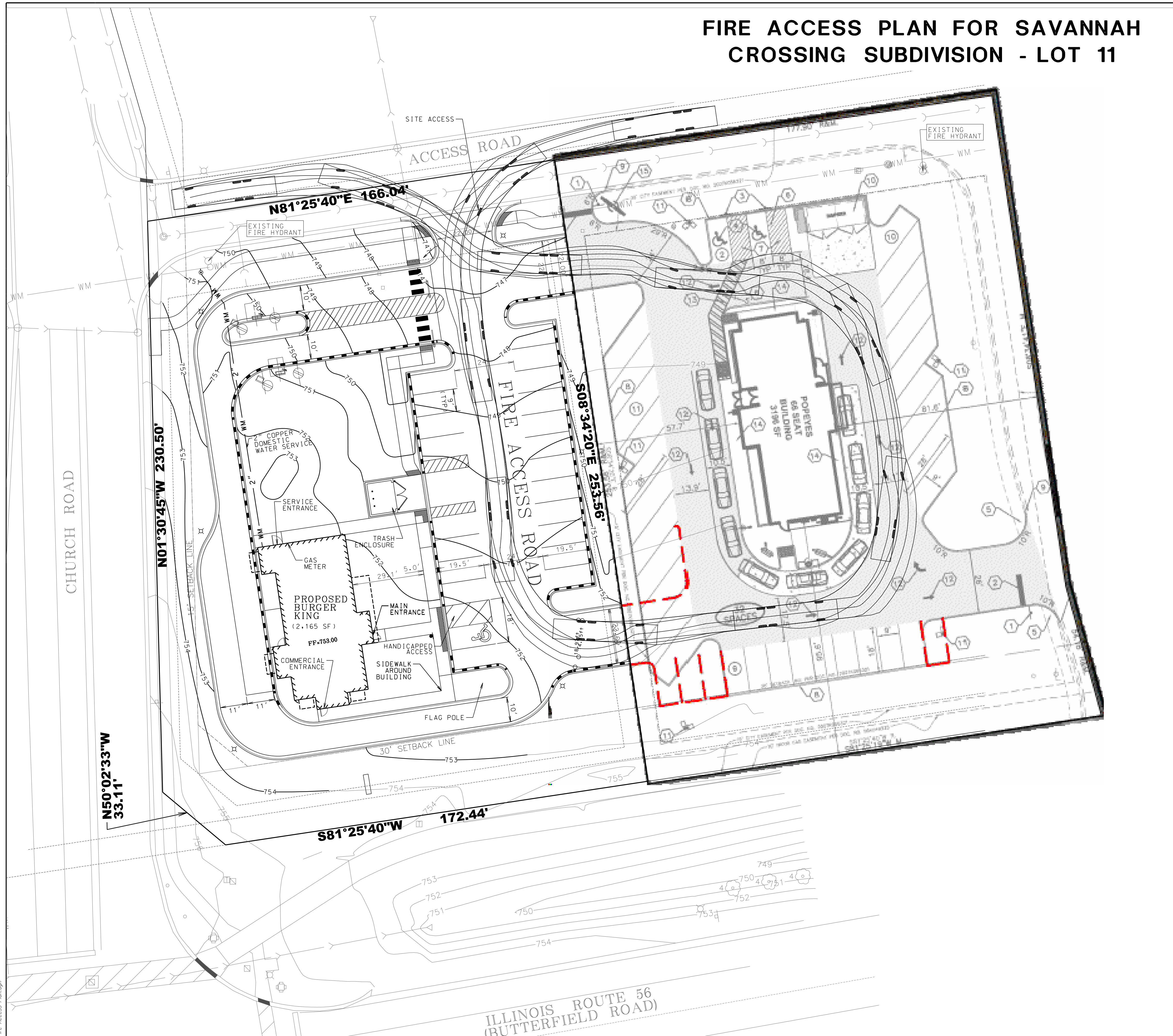
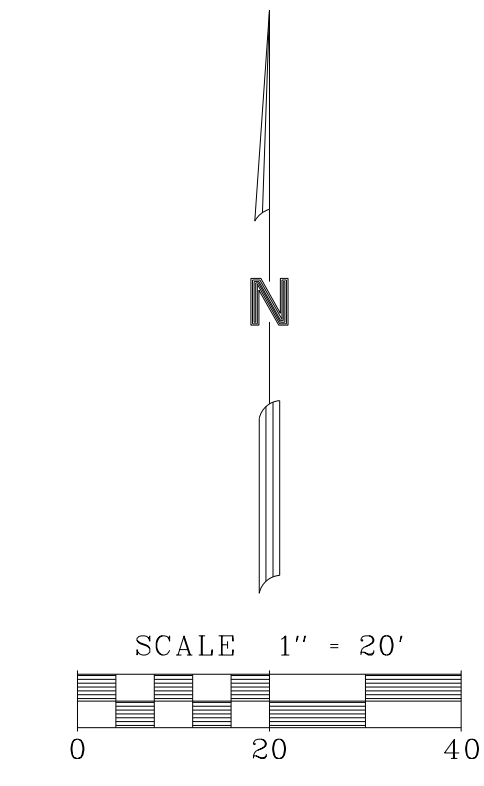
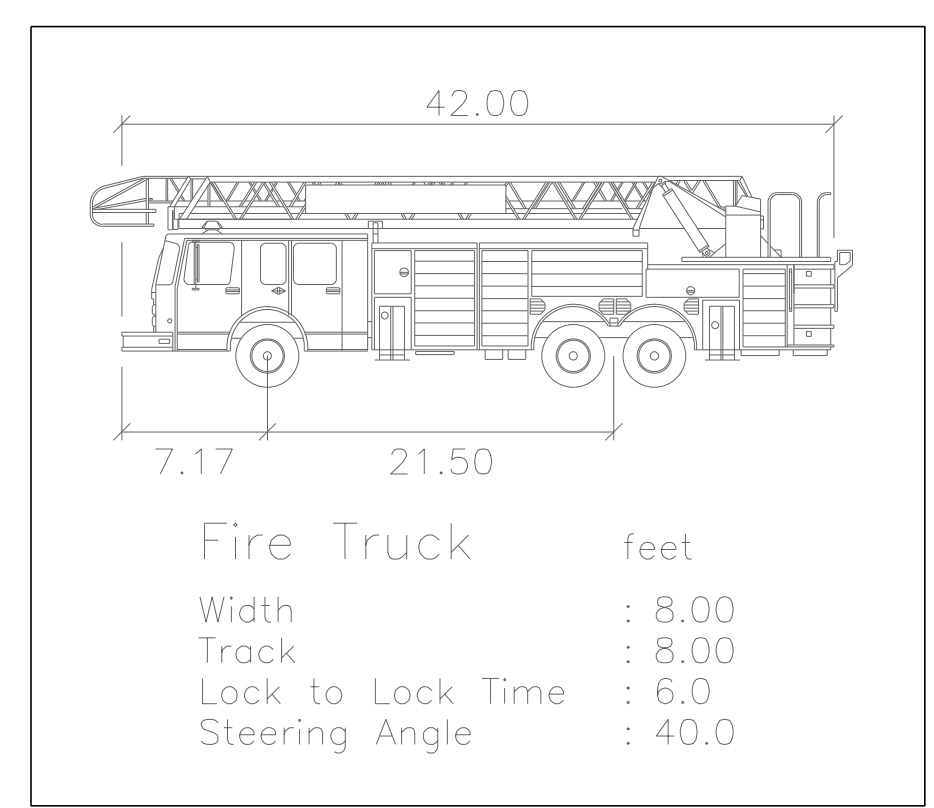


FIRE ACCESS PLAN FOR SAVANNAH CROSSING SUBDIVISION - LOT 11



SITE DATA TABLE:

A.	BUILDING HEIGHT:	20' - 0"
B.	BUILDING AREA:	2,165 S.F.
C.	FIRE SUPPRESSION AND ALARM SYSTEM:	1 FIRE EXTINGUISHER PROVIDED



LEGEND

	EXISTING	PROPOSED
SANITARY SEWER	8" PVC	8" PVC
FORCE MAIN	FM	FM
STORM SEWER	12" RCP	12" RCP
UNDERDRAIN	UD	UD
MANHOLE	⊙	⊙
CATCH BASIN	⊙	⊙
INLET	⊙	⊙
CLEANOUT	⊙	⊙
WATER MAIN	WM	WM
VALVE VAULT	⊙	⊙
VALVE BOX	⊙	⊙
FIRE HYDRANT	⊙	⊙
FLARED END SECTION	△	△
COMBINED SEWER	CS	CS
STREET LIGHT/PARKING LOT LIGHT	⊙	⊙
POWER POLE	⊙	⊙
STREET SIGN	⊙	⊙
FENCE	X	X
GAS MAIN	GM	GM
OVERHEAD LINE	OH	OH
TELEPHONE LINE	T	T
ELECTRIC LINE	E	E
CABLE TV LINE	CATV	CATV
HIGH WATER LEVEL	NWL XXX	NWL XXX
NORMAL WATER LEVEL	XXX.XX	XXX.XX
CONTOUR LINE	XXX.XX	XXX.XX
TOP OF CURB ELEVATION	TC XXX.XX	TC XXX.XX
TOP OF DEPRESSED CURB	TDC XXX.XX	TDC XXX.XX
PAVEMENT ELEVATION	P XXX.XX	P XXX.XX
SPOT ELEVATION	XXX.XX	XXX.XX
FINISHED FLOOR ELEVATION	FF = XXX.XX	FF = XXX.XX
TOP OF FOUNDATION	TF = XXX.XX	TF = XXX.XX
GRADE AT FOUNDATION	GP = XXX.XX	GP = XXX.XX
HIGH OR LOW POINT	⊙	⊙
OVERLAND FLOOD ROUTE	—	—
PAVEMENT FLOW DIRECTION	—	—
SWALE FLOW DIRECTION	—	—
DEPRESSED CURB AND GUTTER	—	—
REVERSE CURB AND GUTTER	—	—

3/29/2018 11:40:48 AM D:\14251\Engineering\Projects\Fire Access\Plan.dgn

Mackie Consultants, LLC
 9575 W. Higgins Road, Suite 500
 Rosemont, IL 60018
 (847)696-1400
 www.mackieconsult.com

CLIENT:
INSITE DEVELOPMENT SERVICES, LLC
 1400 16TH STREET SUITE 300
 OAKBROOK, IL 60523
 TEL: 630-617-9100 FAX: 630-617-9120

DATE	DESCRIPTION OF REVISION	BY	SCALE
			1" = 20'

FIRE ACCESS PLAN
SAVANNAH CROSSING SUBDIVISION - LOT 11
1378 BUTTERFIELD RD, AURORA, ILLINOIS

SHEET
1 OF 1
 PROJECT NUMBER: 3423
 © MACKIE CONSULTANTS, LLC, 2018
 ILLINOIS FIRM LICENSE 184-002694