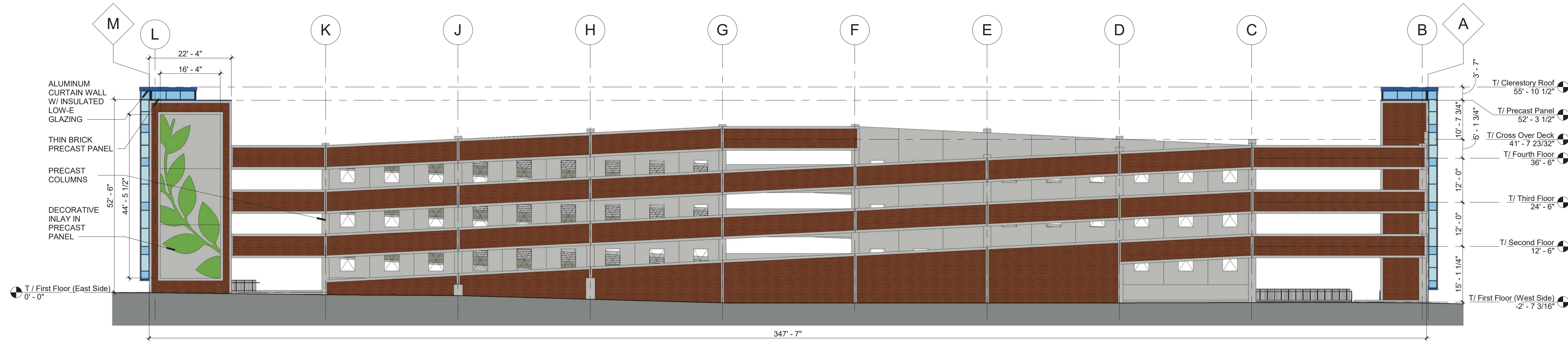
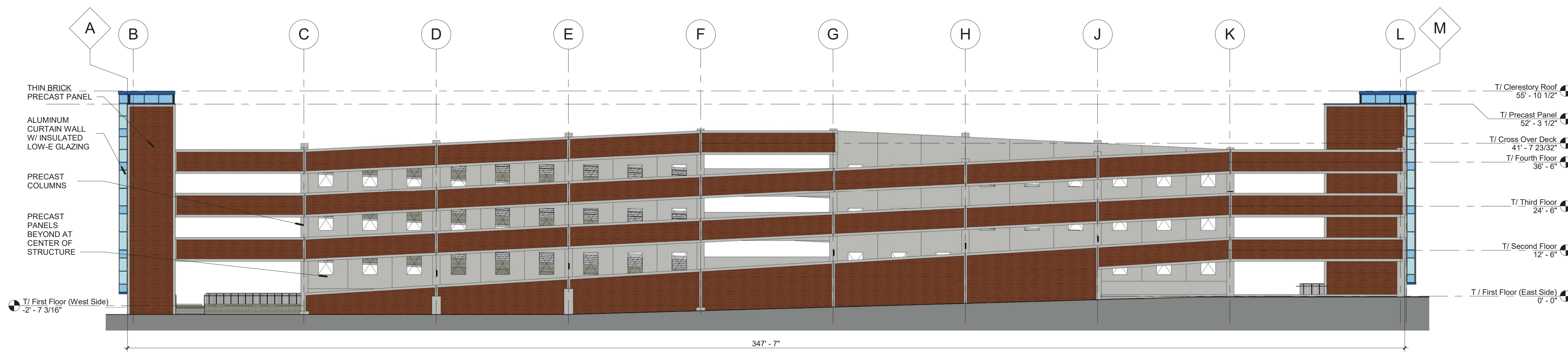


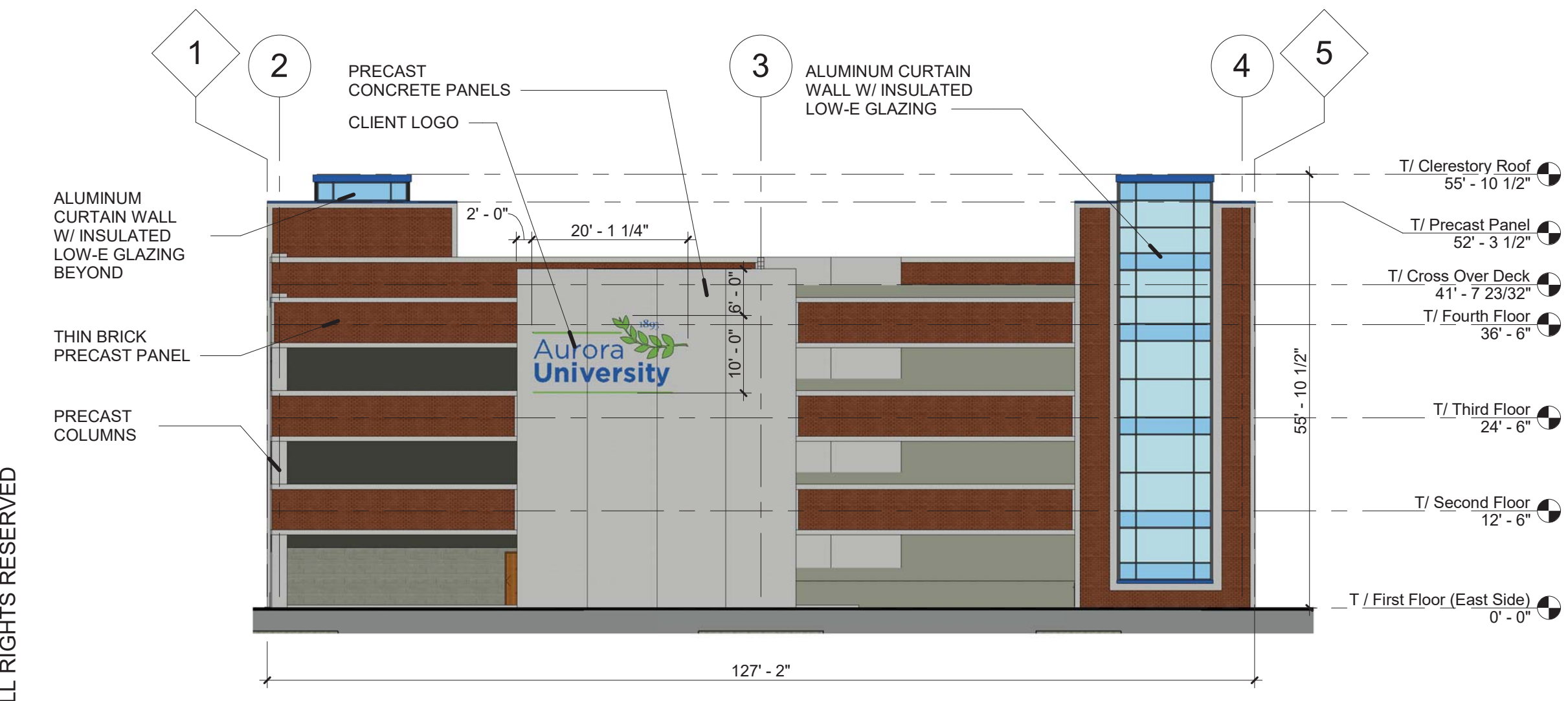
# BUILDING ELEVATIONS



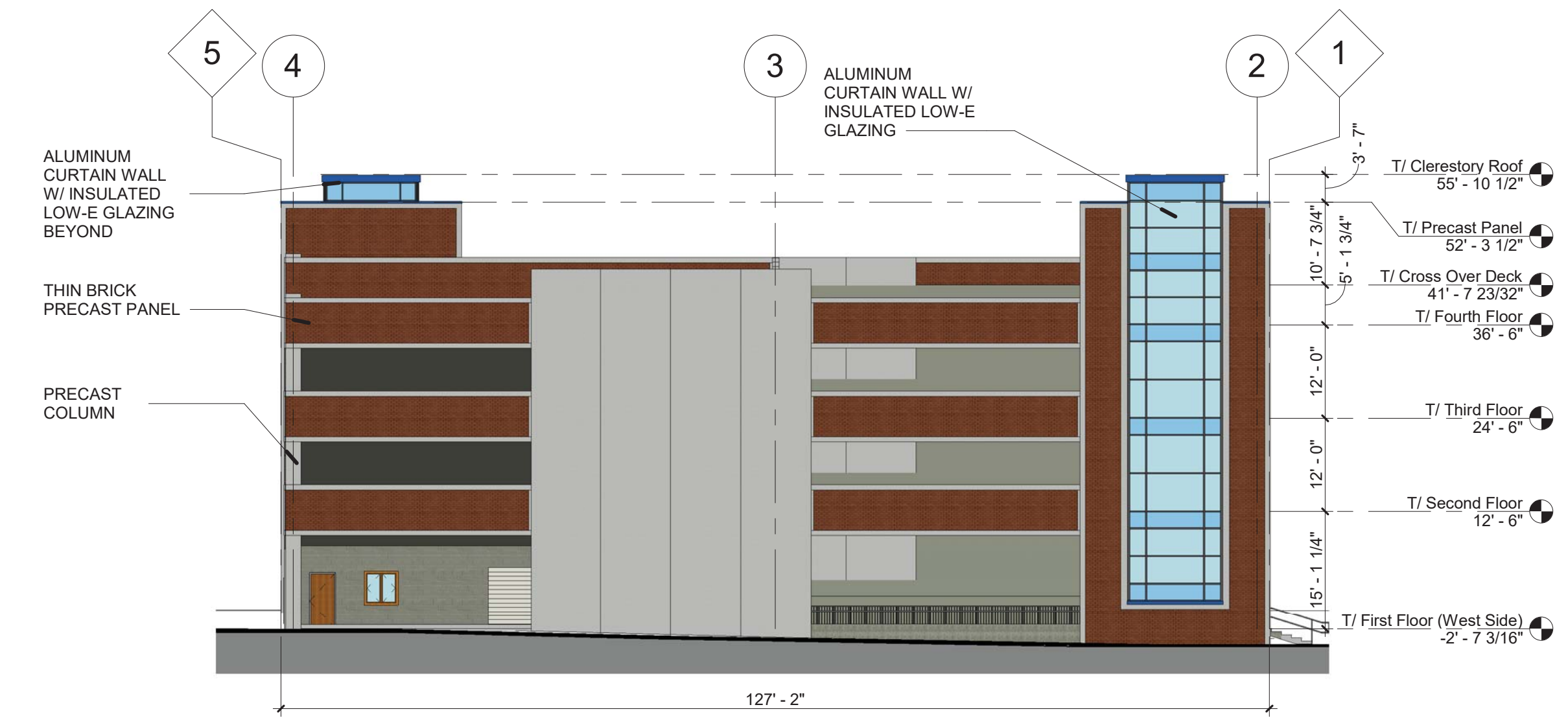
1 NORTH ELEVATION  
1/16" = 1'-0"



2 SOUTH ELEVATION  
1/16" = 1'-0"



3 EAST ELEVATION  
1/16" = 1'-0"



4 WEST ELEVATION  
1/16" = 1'-0"

ELEVATION DATA TABLE	
BUILDING SQUARE FOOTAGE	147,600 SF
BUILDING HEIGHT	56'-0"
SQUARE FOOTAGE OF FAÇADE LOCATION SURFACE	1066 SF
BUILDING MATERIALS:	
PRECAST CONCRETE PANEL	RUBY RED
PRECAST CONCRETE PANEL W/ THIN BRICK	RUBY RED
EXTERIOR GLAZING	TINTED AND BLUE
METAL COPING	BLUE
% OF BRICK FAÇADE	
NORTH	53%
EAST	35%
SOUTH	56%
WEST	36%

WALL SIGNAGE DATA TABLE	
AURORA UNIVERSITY SIGNAGE	
WIDTH OF FAÇADE ON WHICH SIGN IS LOCATED	127' - 2"
HEIGHT OF FAÇADE ON WHICH SIGN IS LOCATED	55' - 10 1/2"
SQUARE FOOTAGE OF FAÇADE ON WHICH SIGN IS LOCATED	5,551 SF
WIDTH OF SIGN FACE	20' - 1 1/4"
HEIGHT OF SIGN FACE	10' - 0"
SQUARE FOOTAGE OF SIGN FACE	201 SF
PERCENT OF SIGN COVERAGE ON FAÇADE	3.70 %

LEAF SIGNAGE	
WIDTH OF FAÇADE ON WHICH SIGN IS LOCATED	347' - 7"
HEIGHT OF FAÇADE ON WHICH SIGN IS LOCATED	52' - 6"
SQUARE FOOTAGE OF FAÇADE ON WHICH SIGN IS LOCATED	15,130 SF
WIDTH OF SIGN FACE	16' - 6 1/4"
HEIGHT OF SIGN FACE	44' - 8"
SQUARE FOOTAGE OF SIGN FACE	278 SF
PERCENT OF SIGN COVERAGE ON FAÇADE	1.85 %

CORDOGAN CLARK & ASSOCIATES INC. ARCHITECTS • ENGINEERS  
Chicago  
710 North Wells Street  
Chicago, IL 60610  
Tel: 312.943.7000  
Fax: 312.943.0771



**BOLDT**  
BUILDS  
Oscar J. Boldt Construction

SOUTHLAWN PARKING DECK  
AURORA UNIVERSITY  
347 GLADSTONE AVE.

ELEVATIONS

JOB NUMBER 18-302  
DATE 10.02.2018

REVISIONS: