

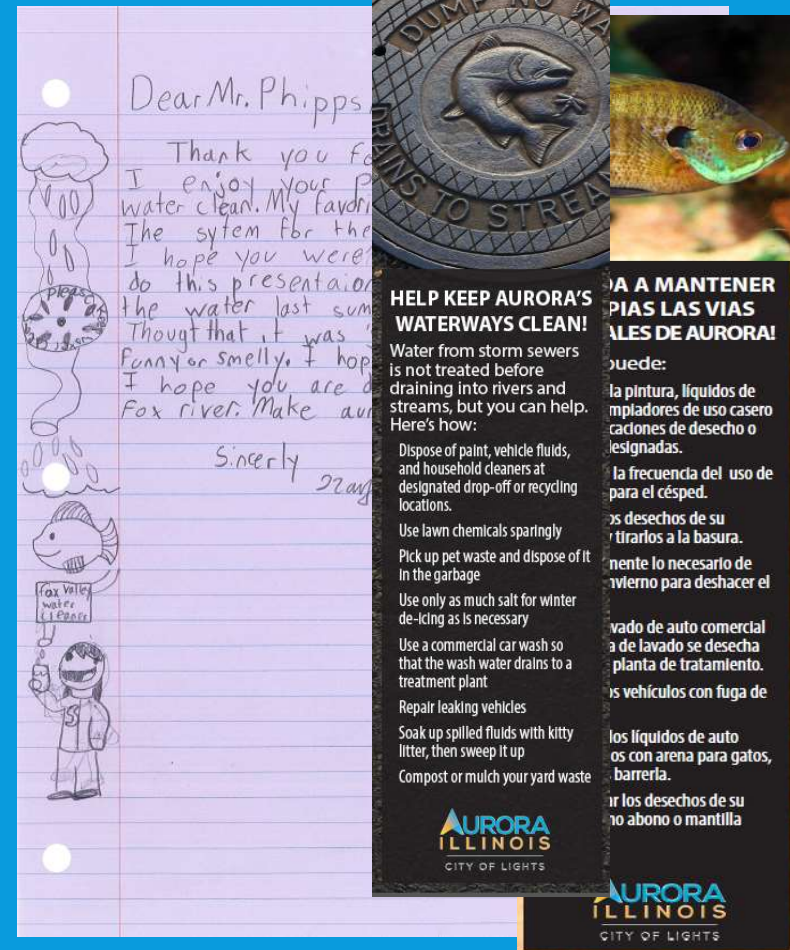
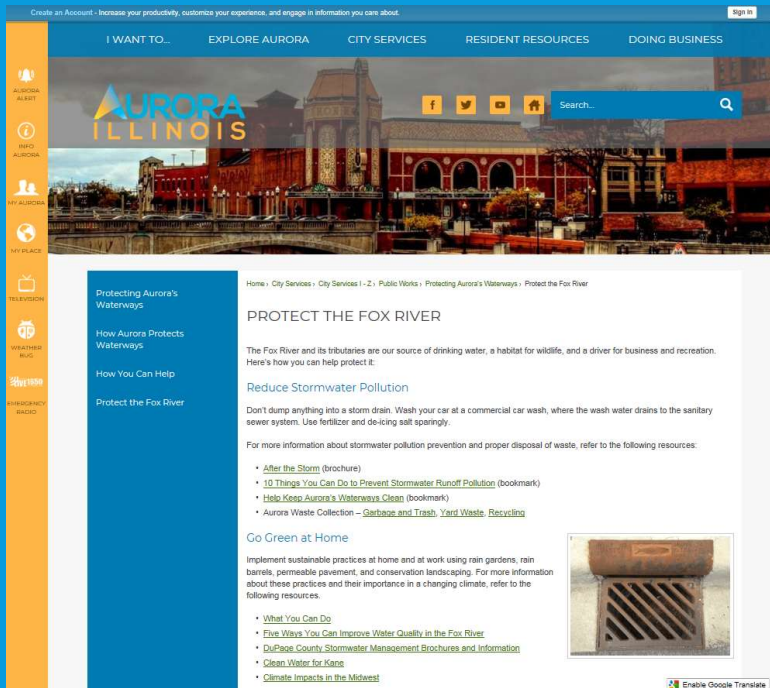
MS₄ PERMIT REQUIREMENTS

- MS₄ = Municipal Separate Storm Sewer System
- The City is required to reduce the discharge of pollutants from its MS₄ to the maximum extent practicable
- Program Components
 - Public Education and Outreach
 - Public Involvement and Participation
 - Illicit Discharge Detection and Elimination
 - Construction Site Runoff Control
 - Post-Construction Stormwater Management
 - Pollution Prevention for Municipal Operations
- Enforced by Illinois Environmental Protection Agency



PUBLIC EDUCATION & OUTREACH

- Bookmarks and classroom education for elementary schools
- City website information
- Conservation in our Community



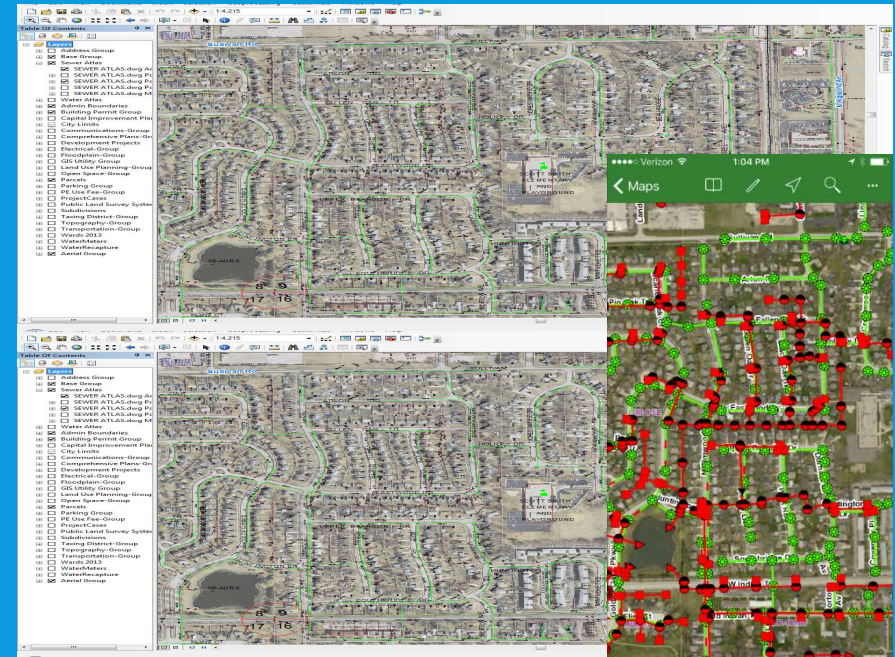
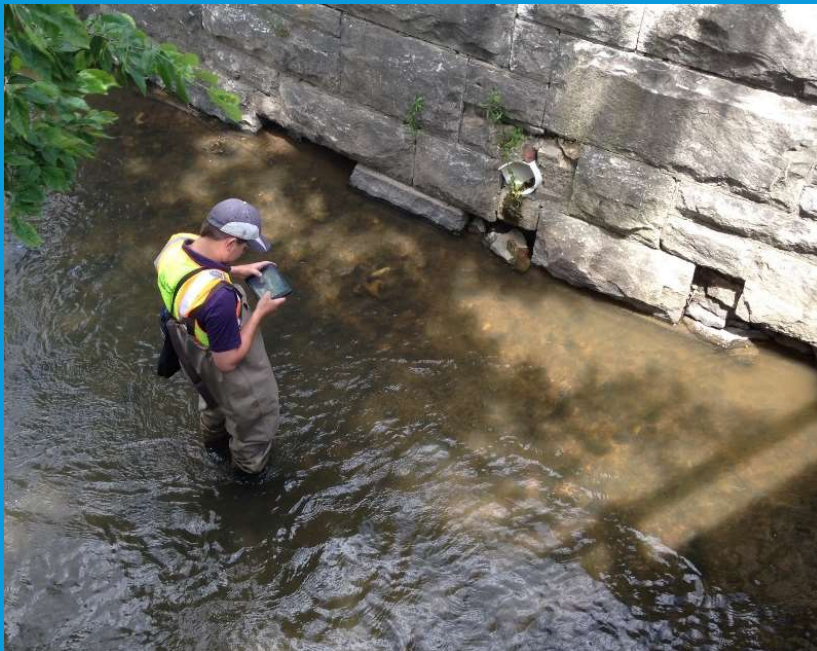
PUBLIC INVOLVEMENT & PARTICIPATION

- Watershed Watchdogs program
- Rain barrel program
- Stormwater hotline
- Public meetings
- Fox River Study Group



ILLICIT DISCHARGE DETECTION & ELIMINATION

- Municipal code
- Inlet grates
- Outfall inspections
- Sewer atlas



CONSTRUCTION SITE & POST-CONSTRUCTION STORMWATER MANAGEMENT

- Erosion control measures
- Stormwater detention
- Green infrastructure



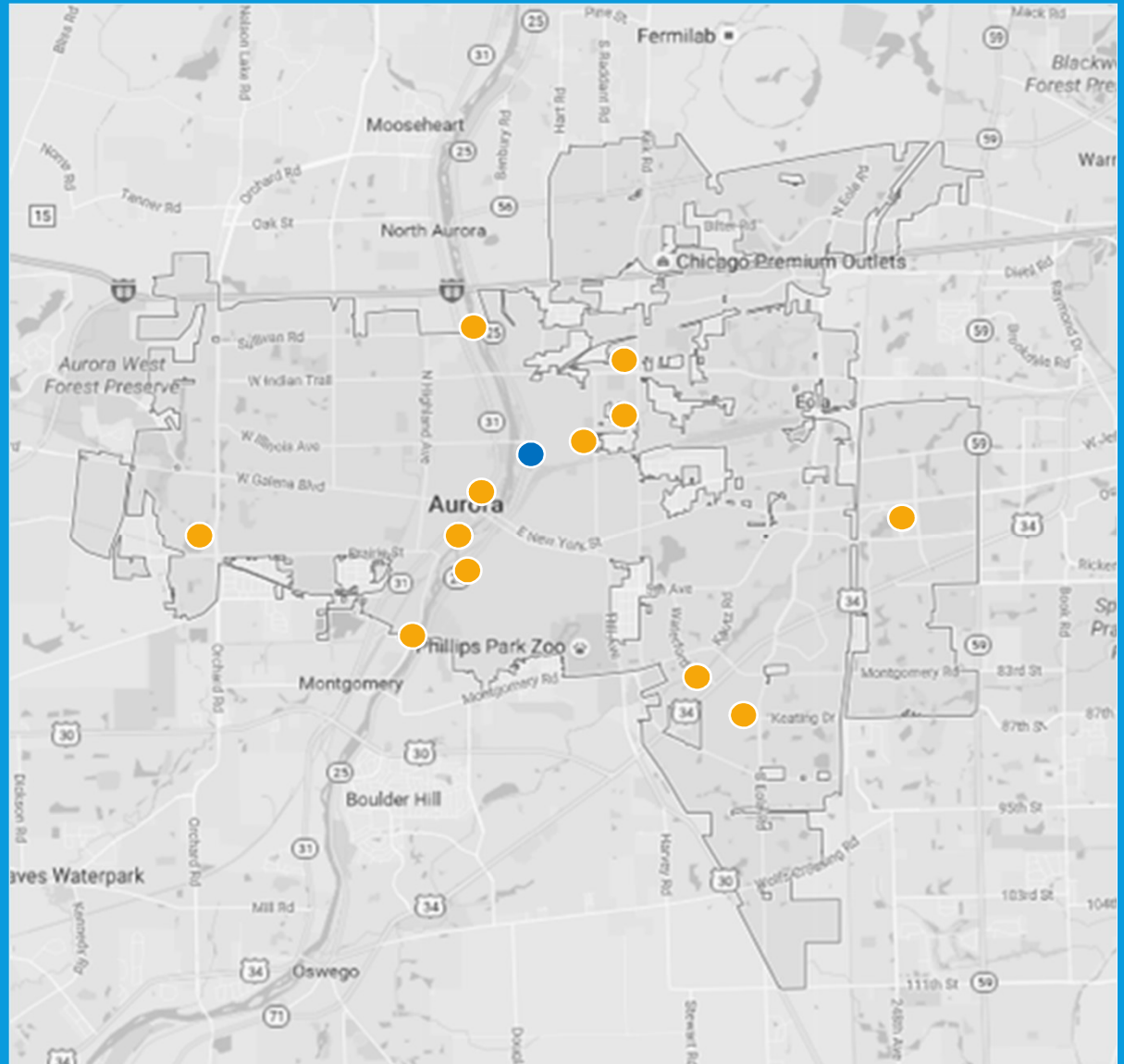
POLLUTION PREVENTION FOR MUNICIPAL OPERATIONS

- Street sweeping
- Catch basin cleaning
- Winter de-icing
- Staff training



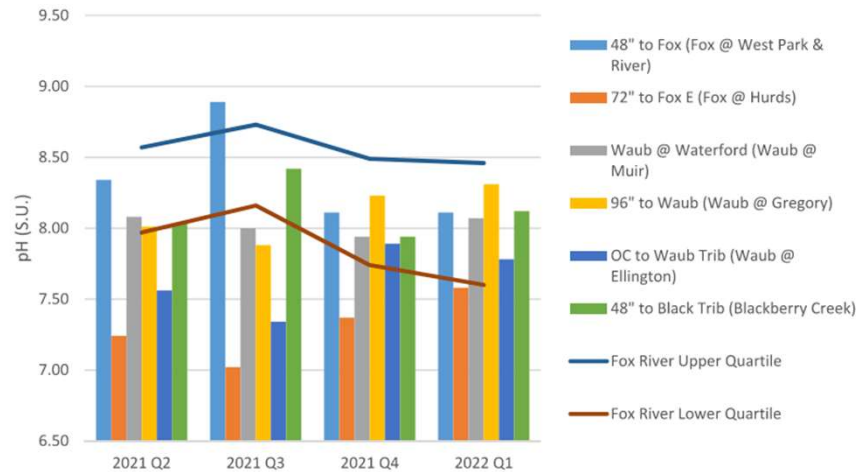
WATER QUALITY MONITORING

- City of Aurora
- Fox River Study Group

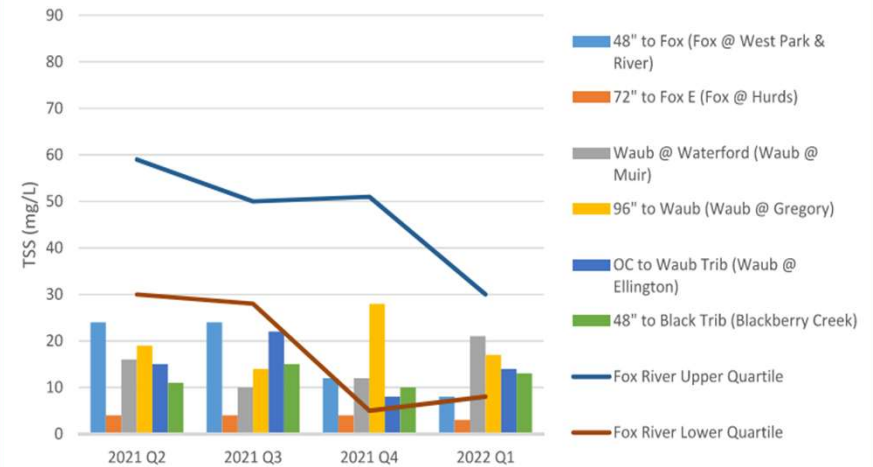


WATER QUALITY MONITORING

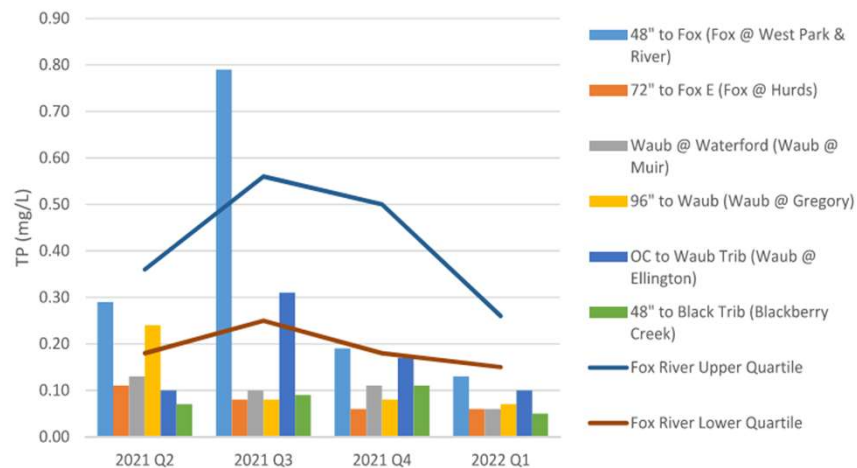
pH 2021-22



Total Suspended Solids 2021-22



Total Phosphorus 2021-22



Total Kjeldahl Nitrogen 2021-22

