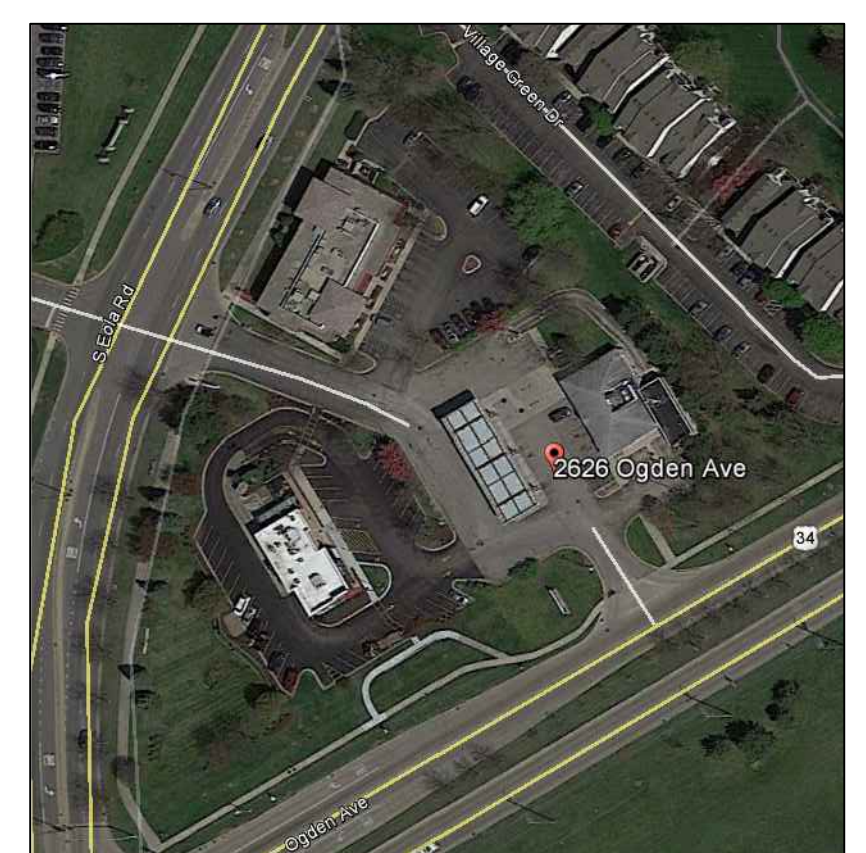
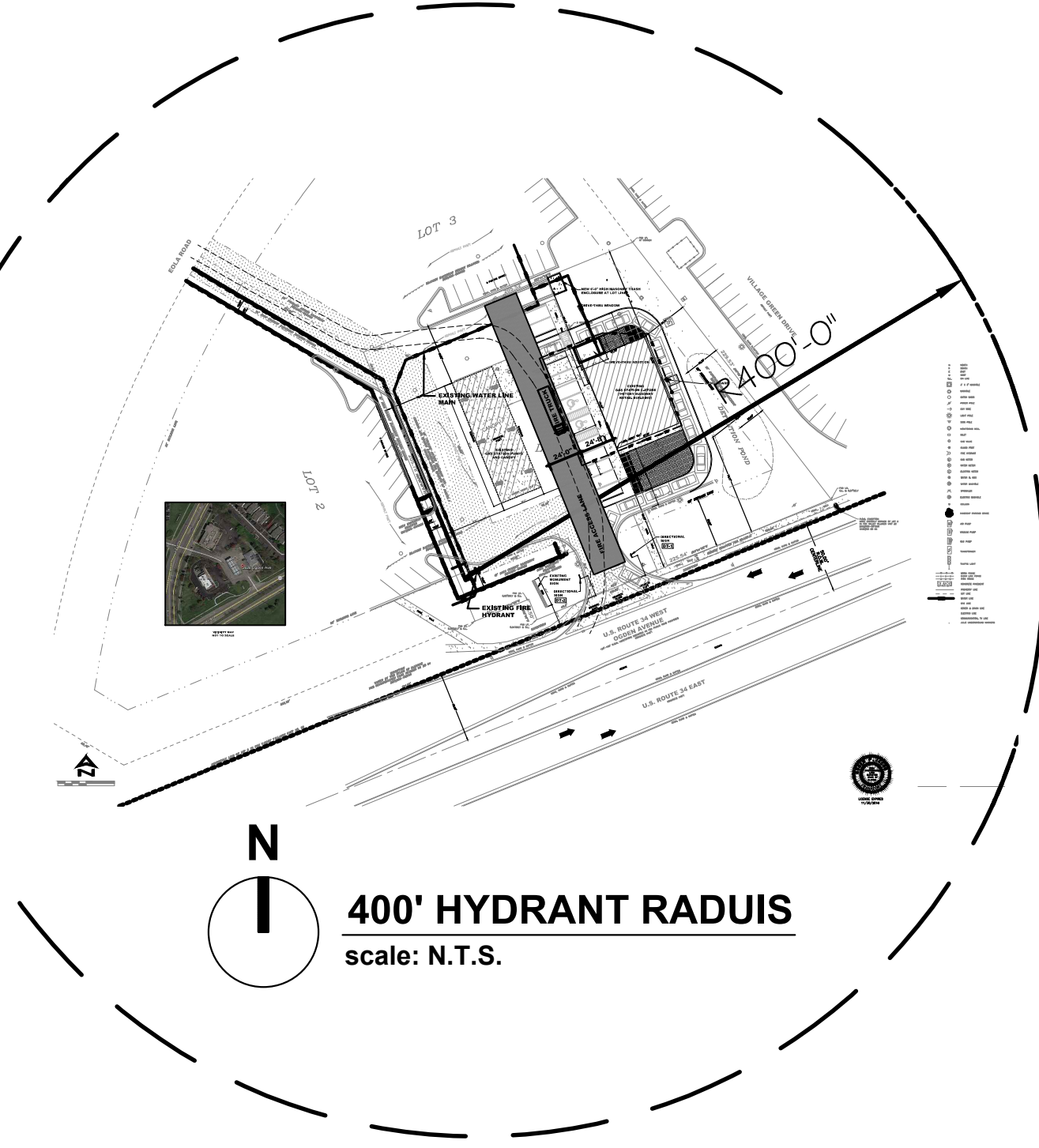


FIRE ACCESS PLAN OF LOT 1 OF MG AURORA EAST RESUBDIVISION



VICINITY MAP
NOT TO SCALE



400' HYDRANT RADIUS
scale: N.T.S.

SYMBOL LEGEND

N	NORTH	☀	AIR PUMP
S	SOUTH	☁	VACUUM PUMP
E	EAST	⊙	GAS PUMP
W	WEST	⊙	TRANSFORMER
ON LINE	ON LINE	⊙	TRAFFIC LIGHT
3" x 3" MANHOLE	3" x 3" MANHOLE	⊙	PROPERTY LINE
MANHOLE	MANHOLE	⊙	LOT LINE
CATCH BASIN	CATCH BASIN	⊙	WATER LINE
POWDER POLE	POWDER POLE	⊙	GAS LINE
GUY WIRE	GUY WIRE	⊙	SEWER & DRAIN LINE
LIGHT POLE	LIGHT POLE	⊙	ELECTRIC LINE
SIGN POLE	SIGN POLE	⊙	COMMUNICATION, TV LINE
MONITORING WELL	MONITORING WELL	⊙	JULIE UNDERGROUND MARKERS
INLET	INLET	⊙	
GAS VALVE	GAS VALVE	⊙	
GUARD POST	GUARD POST	⊙	
FIRE HYDRANT	FIRE HYDRANT	⊙	
GAS METER	GAS METER	⊙	
WATER METER	WATER METER	⊙	
ELECTRIC METER	ELECTRIC METER	⊙	
WATER B. BOX	WATER B. BOX	⊙	
WATER MANHOLE	WATER MANHOLE	⊙	
SPRINKLER	SPRINKLER	⊙	
ELECTRIC MANHOLE	ELECTRIC MANHOLE	⊙	
COLUMN	COLUMN	⊙	
♿	HANDICAP PARKING SPACE		

Fire Access Plan Data Table		
Description	Value	Unit
a) Building Height	13.00	feet
b) Building Square Footage (typical)	3,350	square feet
c) Building fire suppression information including any proposed use of sprinkler systems, fire alarm systems, whether fire extinguishers are needed:		
No Sprinkler system or fire alarm system		
d) General description of business to be conducted within each building including: will there be rack storage in the building, will there be storage of combustible materials over twelve feet in height, clearance of sprinkler heads and stored materials (18 inch minimum):		
Gas station C-store and Dunkin Donuts		



FIRE ACCESS PLAN
scale: 1" = 20'

PETITIONER
2010 W Fulton St.
Suite F-240
Chicago, IL 60612
ph 312-226-0051
fx 312-226-0997
info@fhdsdesignbuild.com

ARCHITECTURE ■ **PLANNING** ■ **CONSTRUCTION**

FHS
DESIGN + BUILD, LLC.

ARCHITECT OF RECORD

STATE OF ILLINOIS
DAVID WAYNE
MCLEACHEN
091-017114
LICENSED ARCHITECT

OWNER INFORMATION

EDDIE WOOD, PRESIDENT
AURORA DEVELOPMENT LLC
2626 OGDEN AVE, AURORA, IL 60504
P(312) 662-3935
EDUPAGEMARATHONIL@GMAIL.COM



DATE	FHS #	SCALE	AS NOTED	DRAWN	DWM	CKD	KM	APPD	FS
04/06/15		2015-6A							
				SPECIAL USE SUBMITTAL #3	05/03/16				
				SPECIAL USE SUBMITTAL #2	02/15/16				
				SPECIAL USE SUBMITTAL #1	09/14/15				
				NO	DESCRIPTION	DATE	APPD	FS	

**2626 OGDEN AVE.
AURORA, IL. 60504
FIRE ACCESS PLAN OF LOT 1
OF MG AURORA EAST
RESUBDIVISION**

FAP-100