

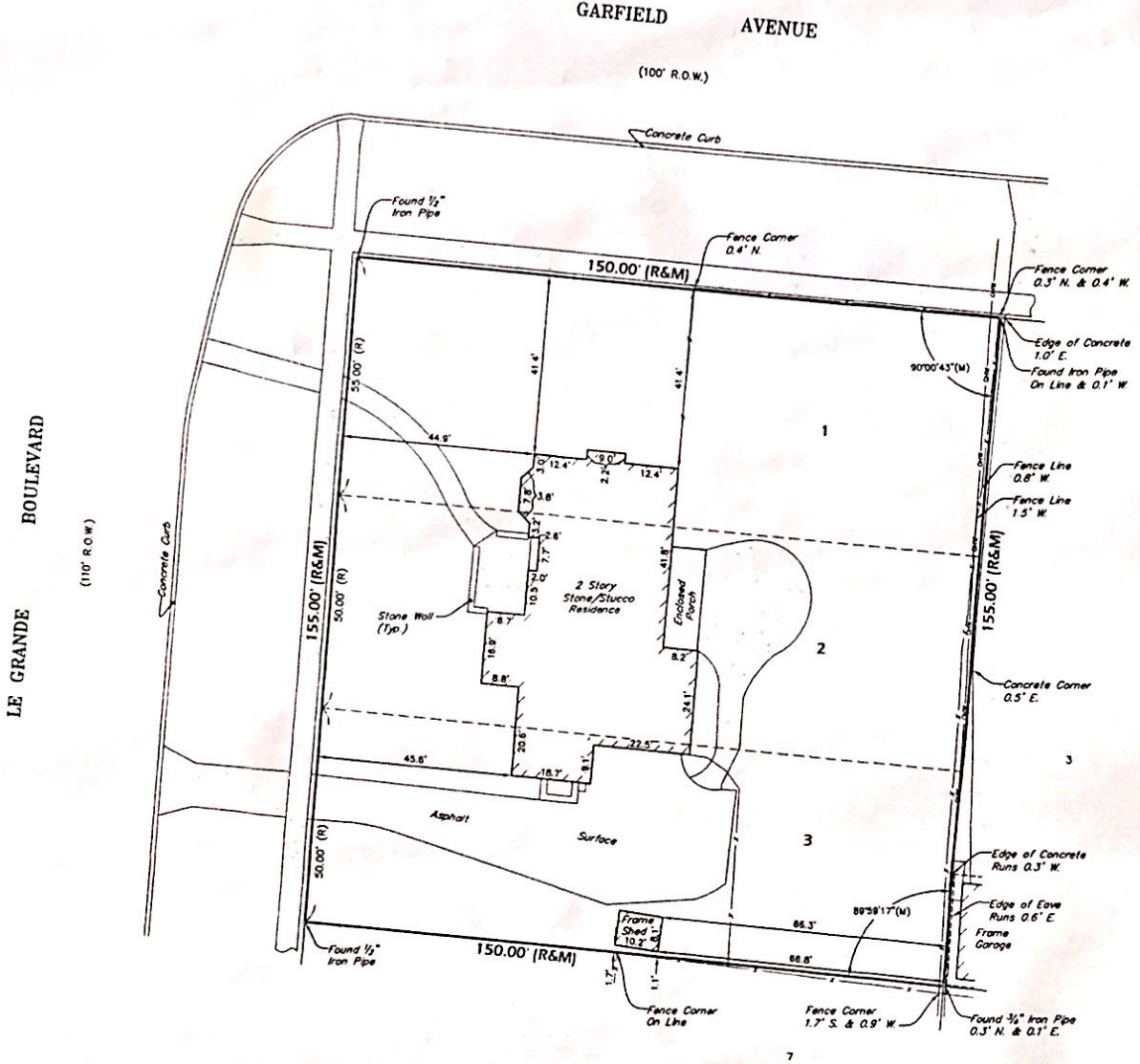
# PLAT OF SURVEY

OF

LOTS 1, 2 AND 3 IN BLOCK 2 OF GEORGE E. SUTPHEN'S  
SUBDIVISION IN THE CITY OF AURORA, KANE COUNTY, ILLINOIS  
(BEING A SUBDIVISION OF LOTS 1, 2, 3, 8, 9, 12 AND 13 IN  
BLOCK 16 AND LOTS 4, 5 AND 6 IN BLOCK 15 OF NEW  
DOWNER PLACE ADDITION TO AURORA).



SCALE: 1"=20'



AREA OF SURVEY:  
CONTAINING 23,244 ± SQ. FT.

REFER TO YOUR DEED, ABSTRACT, TITLE POLICY  
AND LOCAL BUILDING AND ZONING ORDINANCE  
FOR ITEMS OF RECORD NOT SHOWN.

STATE OF ILLINOIS)  
COUNTY OF DUPAGE)

PROFESSIONAL LAND SURVEYING, INC. HEREBY CERTIFIES THAT IT HAS  
SURVEYED THE TRACT OF LAND ABOVE DESCRIBED, AND THAT THE  
HEREON DRAWN PLAT IS A CORRECT REPRESENTATION THEREOF.

FIELD WORK COMPLETED AND DATED  
THIS 24TH DAY OF JUNE, 2015.

*[Signature]*  
IPLS No. 3813  
MY LICENSE EXPIRES 11/30/16

THIS PROFESSIONAL SERVICE CONFORMS TO THE CURRENT  
ILLINOIS MINIMUM STANDARDS FOR A BOUNDARY SURVEY.

PROFESSIONAL DESIGN FIRM NO. 184-004196

NOTE:  
POSSIBLE EASEMENT OF ANY PUBLIC SERVICE  
CORPORATION AS DISCLOSED BY SERVICE POLES  
AND/OR WIRES ON REAR OF LAND.

### SYMBOL LEGEND

- CONCRETE SURFACE
- FENCE LINE
- (R) - RECORD DATA
- (M) - MEASURED DATA
- UTILITY POLE
- OVERHEAD WIRES

PREPARED FOR: FLOCK  
JOB ADDRESS: 106 LE GRANDE BOULEVARD  
AURORA, ILLINOIS

**Professional Land Surveying, Inc.**  
3080 Ogden Avenue Suite 107  
Lisle, Illinois 60532

Phone 630.778.1757 Fax 630.778.7757  
www.PLSlisle.com info@plslisle.com  
DRAWN BY: JLK FLD BK / PG NO: 126 / 59  
COMPLETION DATE 06/27/15 JOB NO: 1511140  
REVISED