

THE EOLA TENNIS INSTITUTE

2370 & 2380 S. EOLA RD. - AURORA - ILLINOIS - 60504

ELEVATIONS



NORTH ELEVATION
SCALE: 1:10



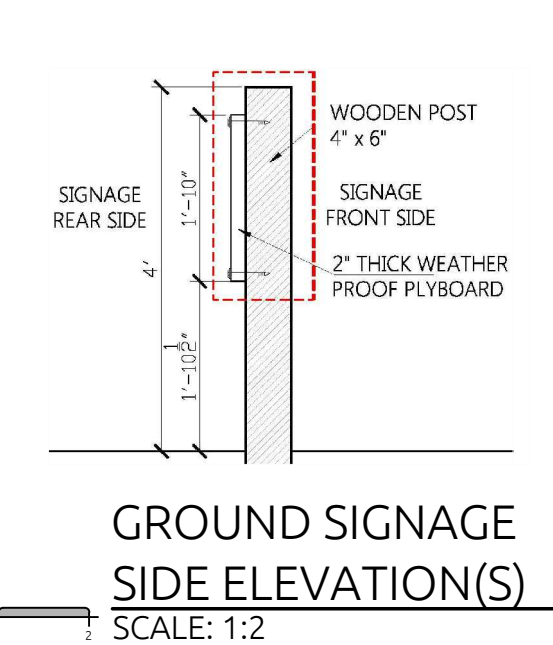
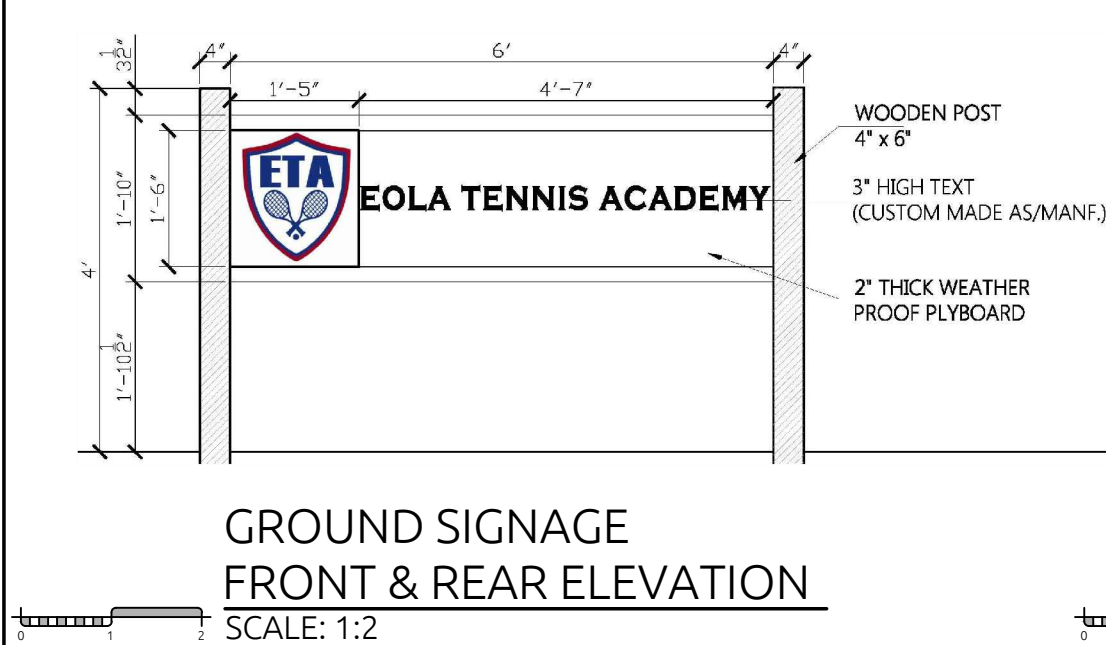
SOUTH ELEVATION
SCALE: 1:10



EAST ELEVATION
SCALE: 1:10



WEST ELEVATION
SCALE: 1:10



MATERIAL LIST	
ITEM	DESCRIPTION
EXTERIOR FACADE	INSULATED METAL PANELS BY METALSPAN - COLOR PER RENDERED ELEVATION
ROOFING MATERIAL	26 GA. GALVALUME METAL PANELS - COLOR PER RENDERED ELEVATION
ENTRY-WAY EXPOSED COLLUMS / RAFTERS	PAINTED ROUGH-SAWN CEDAR - COLOR PER RENDERED ELEVATION
ENTRY-WAY ROOF MATERIAL	26 GA. GALVALUME METAL PANELS - COLOR PER RENDERED ELEVATION
PERCENT OF FACADE IV BRICK	0% PROPOSED
WINDOWS / O.H. GLAZED GARAGE DOOR	TEMPERED GLAZINGS - INSULATED STEEL FRAME
ACCESSORY SIGNAGE / STRUCTURE COLLUMS	PAINTED ROUGH-SAWN CEDAR - COLOR PER RENDERED ELEVATION
SIGN FACE	PAINTED MDO / EXTERIOR GRADE PLYWOOD
EXTERIOR FACADE - TRASH ENCLOSURE	INSULATED METAL PANELS BY METALSPAN - COLOR PER RENDERED ELEVATION

ELEVATION DATA TABLE : ELEVATIONS

DESCRIPTION	VALUE	UNIT
A) BUILDING HEIGHT	30'-0"	FEET
B) GRADE ELEVATION	±643.00 - VERIFY WITH CIVIL	FEET
C) BUILDING SQUARE FOOTAGE BY FLOOR	1ST : 27,600 S.F.	SQUARE FEET
D) BUILDING SQUARE FOOTAGE	TOTAL : 27,600 S.F.	SQUARE FEET

SIGNAGE DATA TABLE : GROUND SIGNAGE

GROUND SIGN #	DESCRIPTION	VALUE	UNIT
GROUND SIGN # 1	i) LENGTH OF ST. FRONTAGE - AT SIGN LOC.	461.41'	FEET
	ii) WIDTH OF SIGN FACE	6'-0"	FEET
	iii) HEIGHT OF SIGN FACE	1'-10"	FEET
	iv) SQUARE FOOTAGE OF SIGN FACE	11.0 S.F.	SQUARE FEET
	v) HEIGHT OF SIGN (OVERALL)	4'-0"	FEET
	vi) TYPE OF SIGN	4X6 CEDAR POSTS W/ PLYWD. FACE	
	vii) TYPE OF SIGN BASE	4X6 CEDAR POSTS	
	viii) IS THIS A DIGITAL DISPLAY	NO, IT IS NOT A DIGITAL SIGN	
	ix) IF YES THEN LOCATION OF DIGITAL DISPLAY	NOT APPLICABLE (N/A - TYP.)	
	x) HEIGHT OF DIGITAL DISPLAY	N/A	FEET
	xi) WIDTH OF DIGITAL DISPLAY	N/A	FEET
xii) SQUARE FOOTAGE OF DIGITAL DISPLAY	N/A	SQUARE FEET	
xiii) PERCENT OF DIGITAL DISPLAY SIGN COVER	N/A - 0%	PERCENT	

SIGNAGE DATA TABLE : WALL SIGNAGE

GROUND SIGN #	DESCRIPTION	VALUE	UNIT	
WALL SIGN # 1	i) WIDTH OF FACADE - ON WHICH SIGN LOC.	120'-0"	FEET	
	ii) HEIGHT OF FACADE - ON WHICH SIGN LOC.	30'-0"	FEET	
	iii) SQUARE FOOTAGE OF FACADE - ON WHICH SIGN IS LOCATED	3,360 S.F.	SQUARE FEET	
	iv) WIDTH OF SIGN FACE (LOGO)	6'-4"	FEET	
	v) WIDTH OF SIGN FACE (TEXT)	20'-11"	FEET	
	vi) HEIGHT OF SIGN FACE (LOGO)	8'-0"	FEET	
	vii) HEIGHT OF SIGN FACE (TEXT)	1'-0"	FEET	
	viii) TOTAL SQUARE FOOTAGE OF SIGN FACE ON WHICH SIGN IS LOCATED	58.42 S.F.	SQUARE FEET	
	ix) PERCENT OF SIGN COVERAGE - FACADE ON WHICH SIGN IS LOCATED	1.80 PERCENT	PERCENT	
	WALL SIGN # 2	i) WIDTH OF FACADE - ON WHICH SIGN LOC.	120'-0"	FEET
		ii) HEIGHT OF FACADE - ON WHICH SIGN LOC.	30'-0"	FEET
iii) SQUARE FOOTAGE OF FACADE - ON WHICH SIGN IS LOCATED		3,360 S.F.	SQUARE FEET	
iv) WIDTH OF SIGN FACE (LOGO)		6'-4"	FEET	
v) WIDTH OF SIGN FACE (TEXT)		20'-11"	FEET	
vi) HEIGHT OF SIGN FACE (LOGO)		8'-0"	FEET	
vii) HEIGHT OF SIGN FACE (TEXT)		1'-0"	FEET	
viii) TOTAL SQUARE FOOTAGE OF SIGN FACE ON WHICH SIGN IS LOCATED		58.42 S.F.	SQUARE FEET	
ix) PERCENT OF SIGN COVERAGE - FACADE ON WHICH SIGN IS LOCATED		1.80 PERCENT	PERCENT	

GENERAL CONTRACTOR:	
RICHARD S. JECHA	BUILDING & DESIGN
PH: 630.355.4948	F: 866.716.8617
RICH@JECHABUILDERS.COM	
OWNER OF RECORD:	
EOLA TENNIS BUILDING LLC.	35405 SADDLE RIDGE CT.
WARRENVILLE, IL, 60555	
SITE PLAN DESIGNER:	
ROAKE & ASSOCIATES	1684 QUINCY AVE.
SUITE 100A	
NAPERVILLE, IL, 60540	

DRAWING LIST:	
SHEET	DRAWING TITLE
A-1	ELEVATIONS
SHEET	DRAWING TITLE

PROPOSED INDOOR TENNIS FACILITY

THE EOLA TENNIS INSTITUTE
2370 & 2380 S. EOLA RD.
AURORA, IL, 60504

DRAWING ISSUE:		
PP	09/21/15	PRESENTATION PLANS
MARK	DATE	DESCRIPTION

PROJECT NO.:	JC_15114
CAD DWG FILE:	JC_15114-APP1.DWG
DRAWN BY:	MSJ/R.S.J./J.L.G.
CHECKED BY:	MSJ/R.S.J.
COPYRIGHT:	R.S.J. BUILDING & DESIGN

SHEET TITLE:
ELEVATIONS

A-1

SHEET 1 OF 1

Client: Jennifer Decker/15114 - EOLA TENNIS INSTITUTE/APP1.DWG/COMPRESSOR: 09/21/15 11:49:15 AM/15114-APP1.DWG/15114-APP1.DWG/15114-APP1.DWG