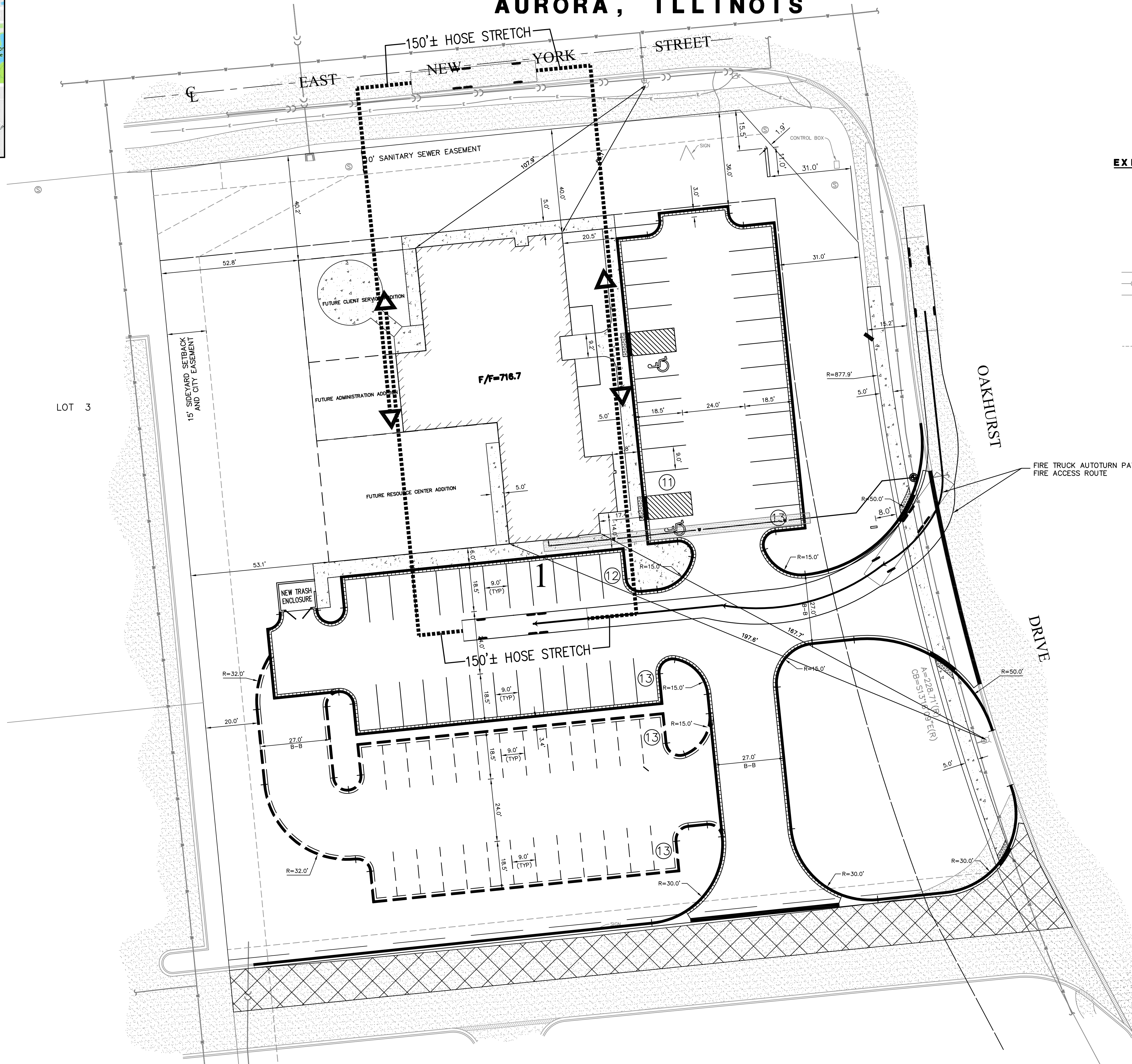
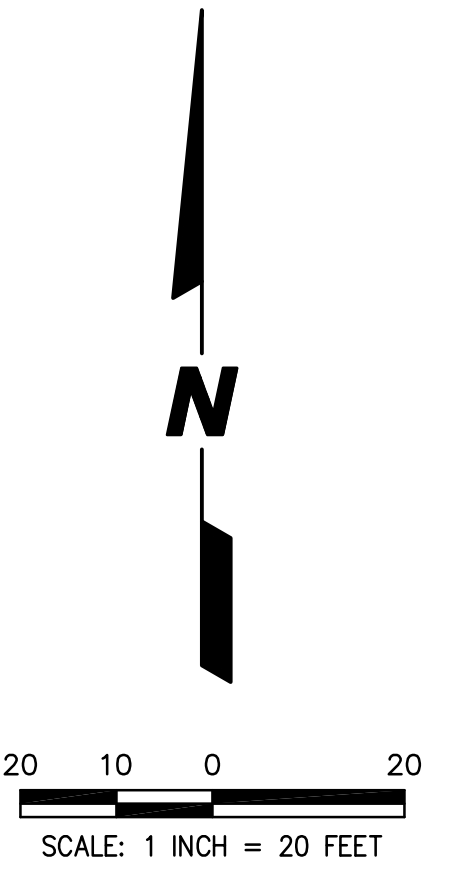
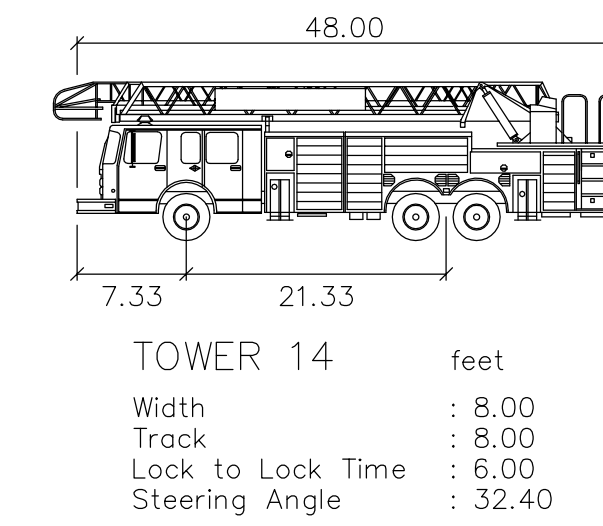


# FIRE ACCESS PLAN FOR **WATERLEAF** 3598 EAST NEW YORK STREET AURORA, ILLINOIS



**LOCATION MAP**



**LEGEND**

EXISTING	PROPOSED	DESCRIPTION
○	●	MANHOLE
□	■	CATCH BASIN
	●	INLET
	●	CLEANOUT
	▩	SLOPE INLET BOX
	—	HEADWALL
	—	END SECTION
	—	STORM SEWER
	—	SANITARY SEWER
	—	WATERMAIN
	●	VALVE & BOX
	●	WATER VALVE IN VAULT
	●	FIRE HYDRANT
	—	CONTOURS
	—	ELEVATIONS
	—	STREET LIGHT
	—	HOSE STRETCH w/LENGTH
	—	FIRE ENGINE LOCATION

▨	—	REVERSE PITCH B-6.12 GUTTER.
▨	—	B-6.12 CURB & GUTTER.
▨	—	BARRIER CURB.
▨	—	DEPRESSED CURB OR RIBBON CURB.
▨	—	INDICATES CONCRETE
▨	—	INDICATES HEAVY DUTY ASPHALT

FIRE ACCESS PLAN DATA TABLE		
Description	Value	Unit
a) Building Height	23	feet
b) Building Square Footage (typical)	6,000	square feet
Future Expansion	5,800	square feet

PREPARED FOR:  
**WATERLEAF**  
3598 EAST NEW YORK STREET  
AURORA, IL 60504

PREPARED BY:  
**CEMCON, Ltd.**  
Consulting Engineers, Land Surveyors & Planners  
2280 White Oak Circle, Suite 100  
Aurora, Illinois 60502-9675  
PH: 630.862.2100 FAX: 630.862.2199  
E-Mail: cadd@cemcon.com Website: www.cemcon.com

DISC NO.: 904221 FILE NAME: FINAL PLAN  
DRAWN BY: KMS FLD. BK. / PG. NO.: ----  
COMPLETION DATE: 07-23-18 JOB NO.: 904.221  
XREF : OVERALL, TOPO PROJECT MANAGER : MAM  
REV: 10-11-18/MAM  
Copyright © 2018 Cemcon, Ltd. All rights reserved.