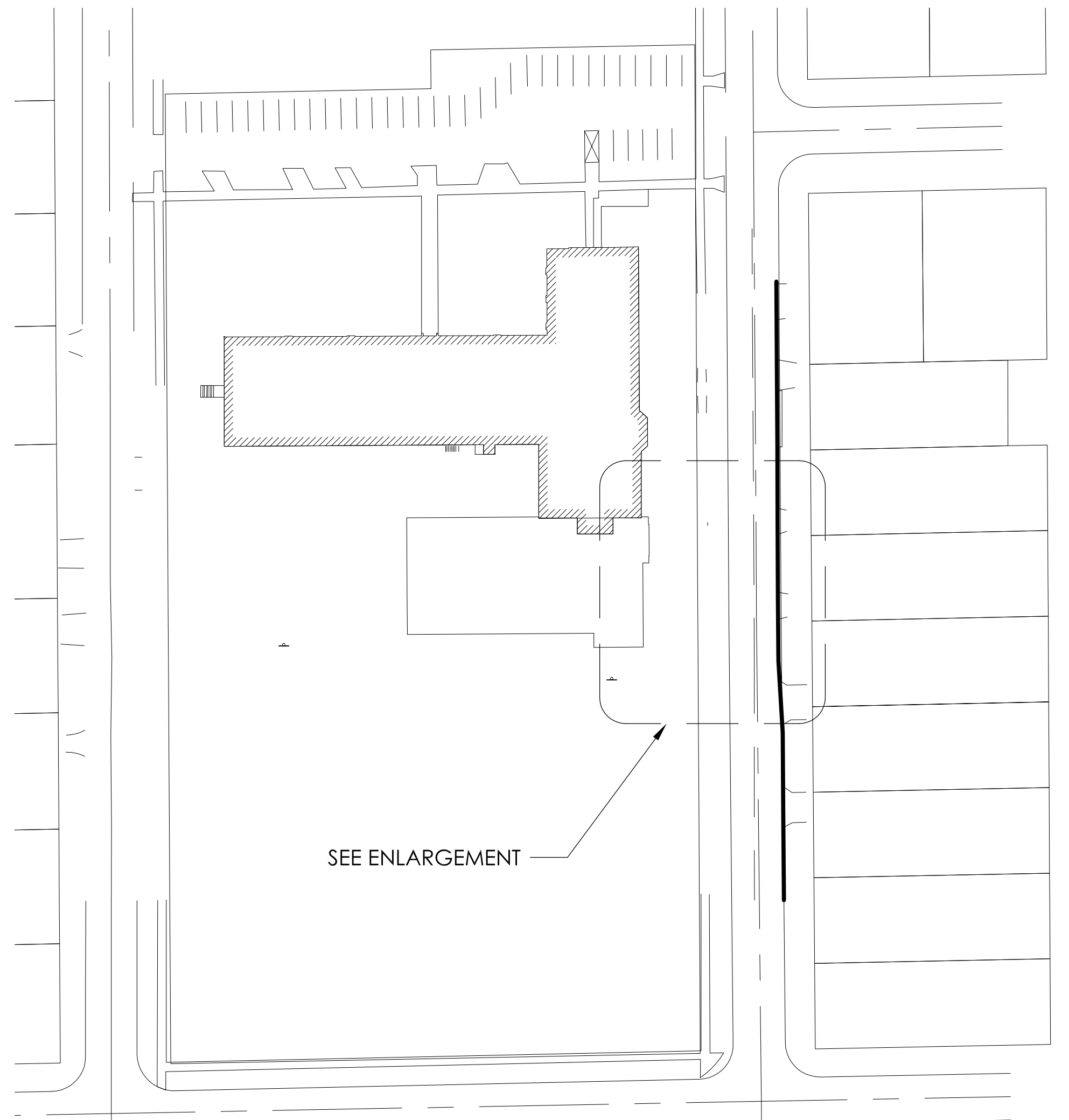


LANDSCAPE PLAN FOR FREEMAN SCHOOL

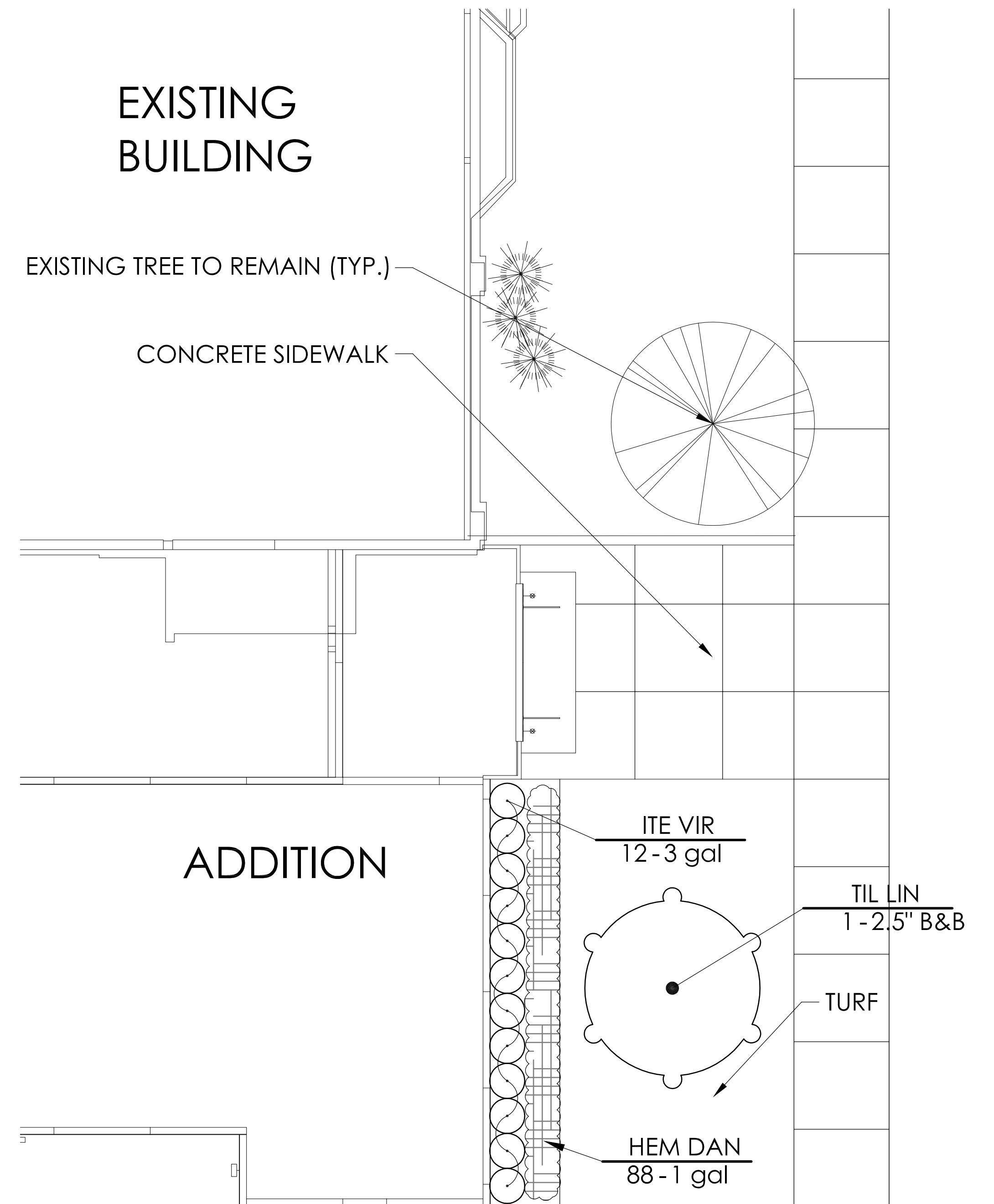


OVERALL PLAN

1"=60'

PLANT SCHEDULE

TREES	QTY	BOTANICAL/COMMON	CONT	REMARKS
TIL LIN	1	Tilia americana / American Linden	2.5" B&B	
SHRUBS	QTY	BOTANICAL/COMMON	CONT	REMARKS
ITE VIR	12	Itea virginica 'Henry's Garnet' / Henry's Garnet Sweetspire/Virginia Sweetspire	3 gal	
GROUND COVERS	QTY	BOTANICAL/COMMON	CONT	REMARKS
HEM DAN	88	Hemerocallis hybrid 'Woodside Fire Dance' TM / TrophyTaker Daylily	1 gal@ 18" oc	



ENLARGEMENT PLAN

RANDALL ROAD

	CTE Value	Count Provided	Total CTEs Provided
Canopy Trees	1	1	1
Evergreen Trees	3	0	0
Understory Trees	3	0	0
Deciduous Shrubs	20	12	1
Evergreen Shrubs	20	0	0
Total:		13	2

Canopy Trees (minimum size 2.5 caliper) Count:	1
Evergreens (minimum size 6 feet) Count:	0
Understory Trees (minimum size 2.5 caliper or 8 feet if multi-stemmed) Count:	0
Deciduous Shrubs (minimum of 18 inches) Count:	12
Evergreen Shrubs (minimum of 18 inches) Count:	0
Ornamental Grasses Count:	0
Perennials Count:	88
Annuals Count:	0
Groundcover Count:	0

PROPOSED ADDITION TO FREEMAN ELEMENTARY SCHOOL
For WEST AURORA SCHOOL DISTRICT 129

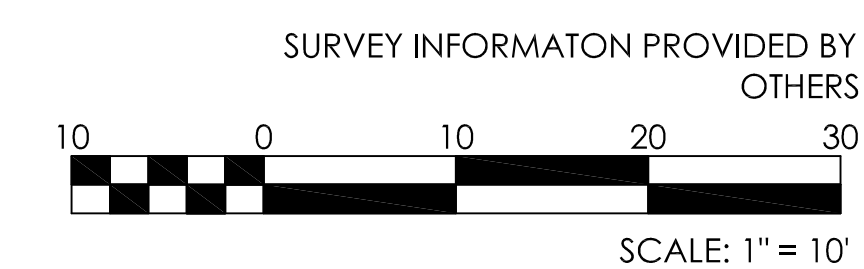
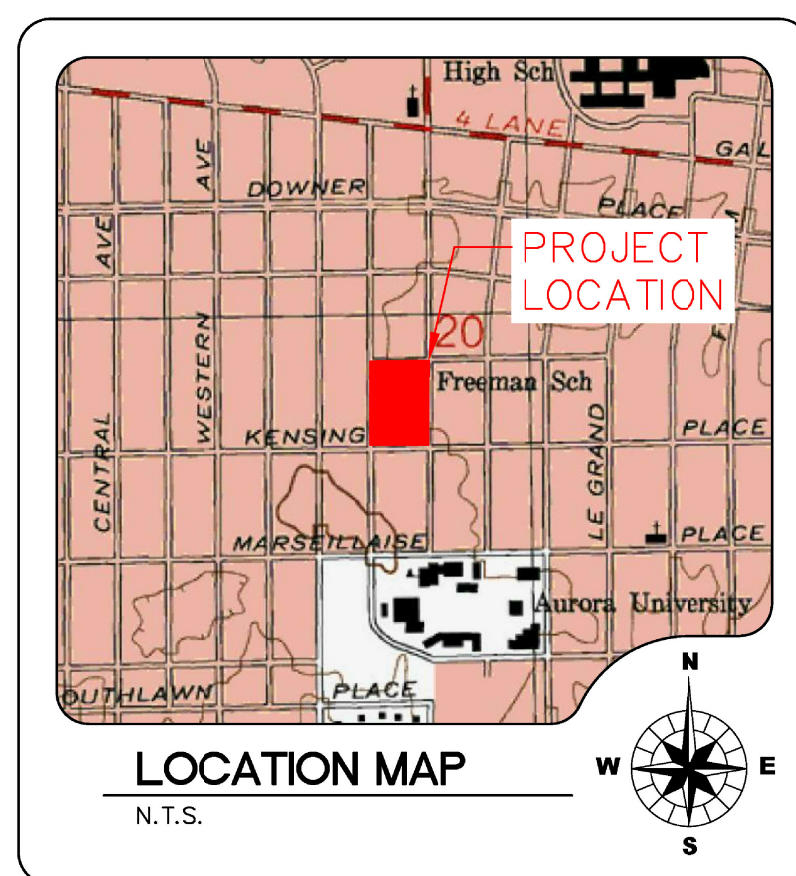
At:



1280 Iroquois Avenue
Suite 110
Naperville, Illinois 60563
Telephone: (630) 428-3134
Fax: (630) 428-3159
www.design-perspectives.net

Copyright 2013 StudioGC, Inc.

NO. ISSUED FOR: DATE



LANDSCAPE PLAN FOR FREEMAN SCHOOL