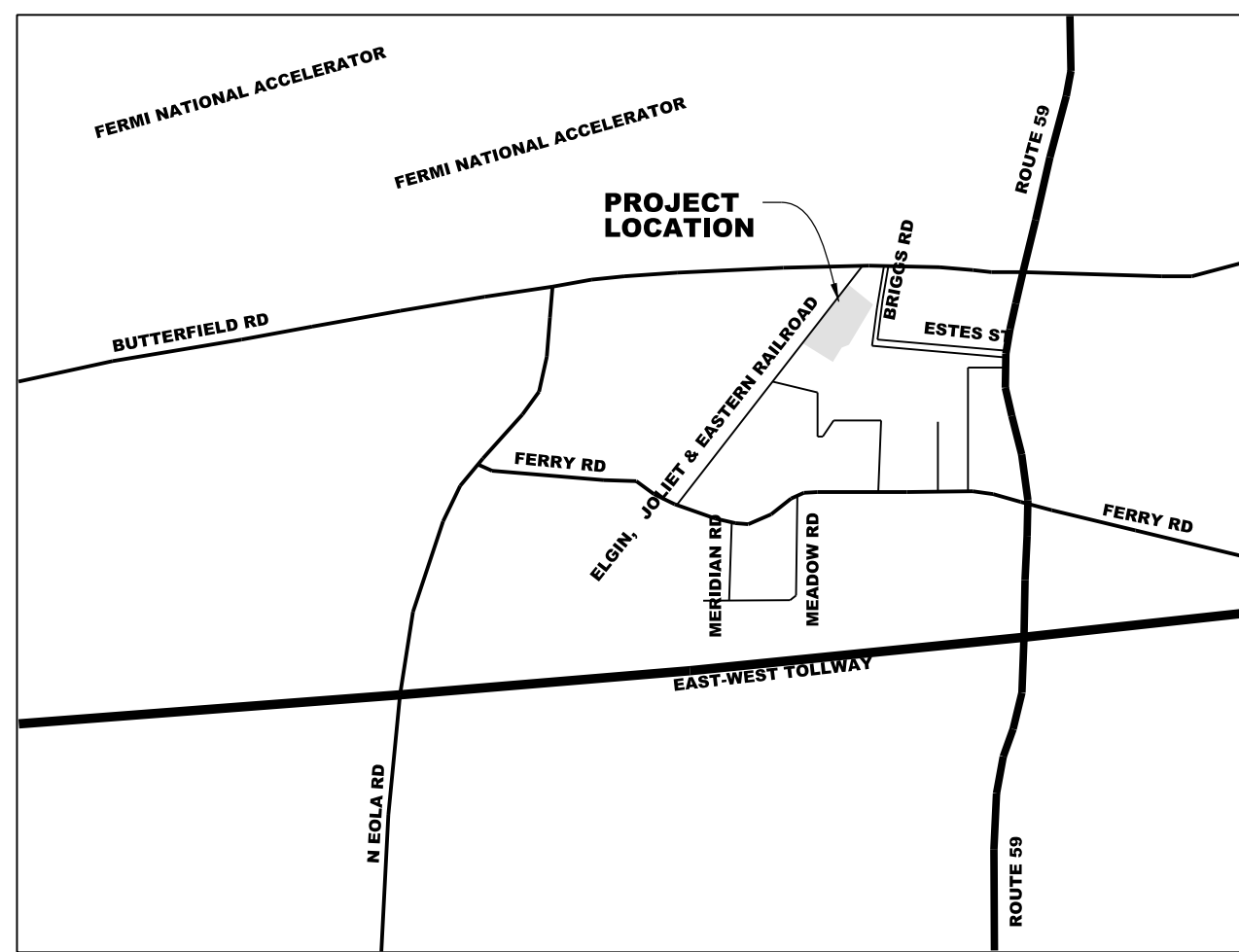
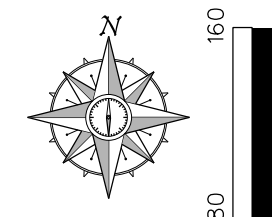


LANDSCAPE PLAN BUTTERFIELD EAST UNIT 3, LOT 6

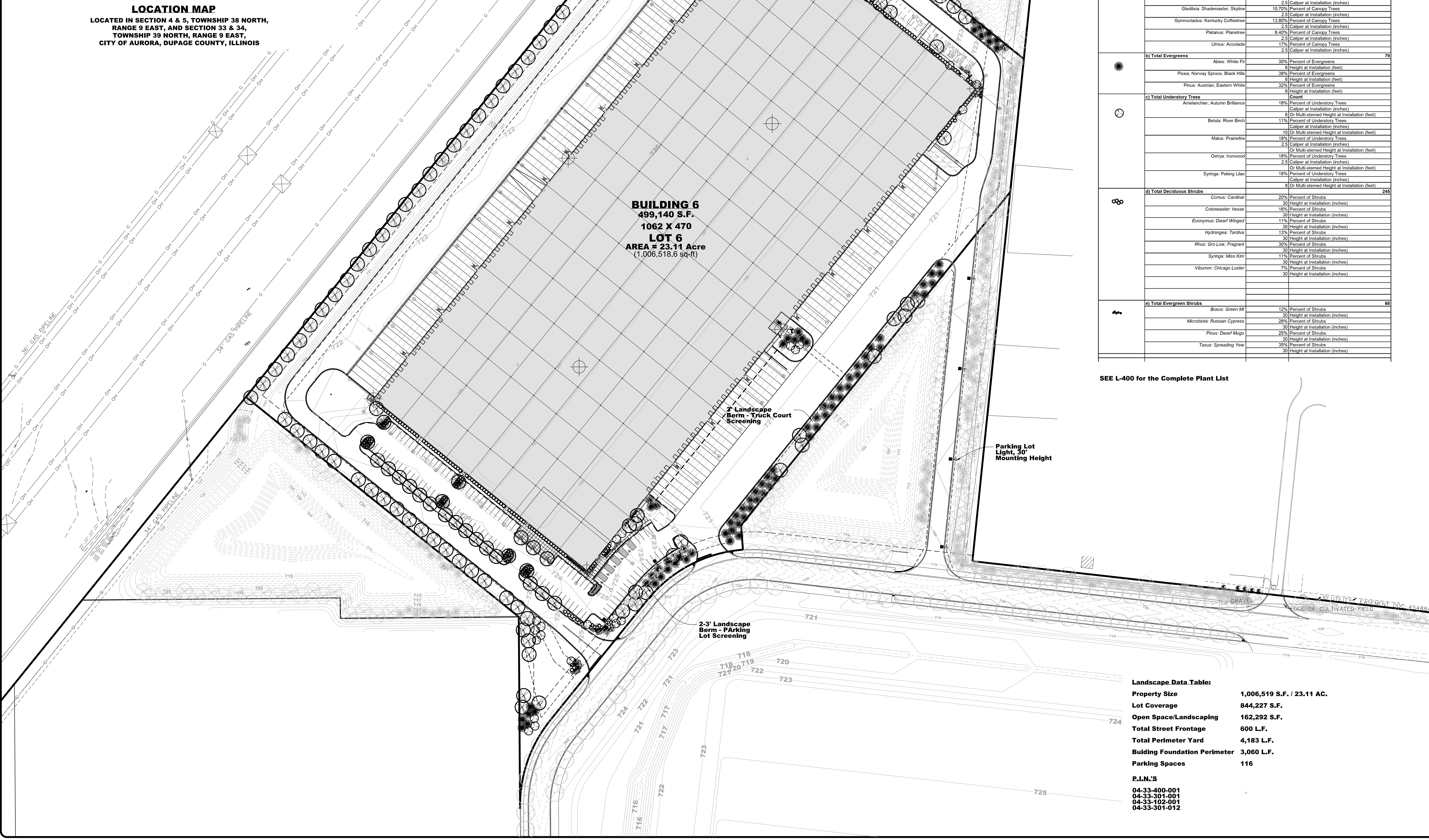


**LOCATION MAP**  
 LOCATED IN SECTION 4 & 5, TOWNSHIP 38 NORTH,  
 RANGE 9 EAST, AND SECTION 33 & 34,  
 TOWNSHIP 39 NORTH, RANGE 9 EAST,  
 CITY OF AURORA, DUPAGE COUNTY, ILLINOIS

Turf Seeding shall be IDOT Class 1 seed mix with Erosion Control Blanket. See Erosion Control Plan

**Material Legend**

- Parkway Tree
- Canopy Tree
- Evergreen Tree
- Ornamental Tree
- Deciduous Shrub
- Evergreen Shrub
- Perennials
- Ornamental Grass



**BUILDING 6**  
 499,140 S.F.  
 1062 X 470  
**LOT 6**  
 AREA = 23.11 Acre  
 (1,006,518.6 sq-ft)

**Landscape Material Data Table: Landscape Plan**

Symbol	Description	Value	Unit	Total
⊗	<b>a) Total Canopy Trees</b>			<b>130</b>
	Acer: Green Mt., Mammoth, Myrtle	25%	Percent of Canopy Trees	
		2.5	Caliper at Installation (inches)	
	Celtis: Hackberry	14%	Percent of Canopy Trees	
		2.5	Caliper at Installation (inches)	
	Cercidiphyllum: Katsuradeo	2%	Percent of Canopy Trees	
		2.5	Caliper at Installation (inches)	
	Cladrastis: Yellowwood	9.20%	Percent of Canopy Trees	
		2.5	Caliper at Installation (inches)	
	Gleditsia: Shademaster, Skyline	10.70%	Percent of Canopy Trees	
		2.5	Caliper at Installation (inches)	
	Gymnocladus: Kentucky Coffeetree	13.80%	Percent of Canopy Trees	
	2.5	Caliper at Installation (inches)		
Platanus: PlaneTree	8.40%	Percent of Canopy Trees		
	2.5	Caliper at Installation (inches)		
Ulmus: Accolade	17%	Percent of Canopy Trees		
	2.5	Caliper at Installation (inches)		
●	<b>b) Total Evergreens</b>			<b>79</b>
	Abies: White Fir	30%	Percent of Evergreens	
		6	Height at Installation (feet)	
	Picea: Norway Spruce, Black Hills	38%	Percent of Evergreens	
	6	Height at Installation (feet)		
Pinus: Austrian, Eastern White	32%	Percent of Evergreens		
	6	Height at Installation (feet)		
⊙	<b>c) Total Understory Trees</b>			<b>Count</b>
	Anemone: Autumn Brilliance	18%	Percent of Understory Trees	
		6	Caliper at Installation (inches)	
	Betula: River Birch	11%	Percent of Understory Trees	
		10	Or Multi-stemmed Height at Installation (feet)	
	Malus: PrairieFire	18%	Percent of Understory Trees	
		2.5	Caliper at Installation (inches)	
	Ostrya: Ironwood	18%	Percent of Understory Trees	
		2.5	Caliper at Installation (inches)	
	Syringa: Peking Lilac	18%	Percent of Understory Trees	
		8	Or Multi-stemmed Height at Installation (feet)	
	⊗	<b>d) Total Deciduous Shrubs</b>		
Cornus: Cardinal		20%	Percent of Shrubs	
		30	Height at Installation (inches)	
Cotoneaster: Jesse		16%	Percent of Shrubs	
		30	Height at Installation (inches)	
Euonymus: Dwarf Winged		11%	Percent of Shrubs	
		30	Height at Installation (inches)	
Hydrangea: Tardiva		13%	Percent of Shrubs	
		30	Height at Installation (inches)	
Rhus: Gro Low, Fragrant		30%	Percent of Shrubs	
	30	Height at Installation (inches)		
Syringa: Miss Kim	11%	Percent of Shrubs		
	30	Height at Installation (inches)		
Viburnum: Chicago Lustre	7%	Percent of Shrubs		
	30	Height at Installation (inches)		
⊗	<b>e) Total Evergreen Shrubs</b>			<b>68</b>
	Buxus: Green Mt	12%	Percent of Shrubs	
		30	Height at Installation (inches)	
	Microlaeta: Russian Cypress	28%	Percent of Shrubs	
		30	Height at Installation (inches)	
Pinus: Dwarf Mugo	25%	Percent of Shrubs		
	30	Height at Installation (inches)		
Taxus: Spreading Yew	35%	Percent of Shrubs		
	30	Height at Installation (inches)		

SEE L-400 for the Complete Plant List

**Landscape Data Table:**

Property Size	1,006,519 S.F. / 23.11 AC.
Lot Coverage	844,227 S.F.
Open Space/Landscaping	162,292 S.F.
Total Street Frontage	600 L.F.
Total Perimeter Yard	4,183 L.F.
Building Foundation Perimeter	3,060 L.F.
Parking Spaces	116

**P.L.N.'S**  
 04-33-400-001  
 04-33-301-001  
 04-33-102-001  
 04-33-301-012

**Duke REALTY**  
 DUKE REALTY LIMITED PARTNERSHIP  
 9377 West Higgins Road, Suite 600  
 Rosemont, IL 60018  
 847.232.5400 • 847.232.5691 (tx)

Landscape Architect:  
**WEBSTER, McGRATH & AHLBERG LTD.**  
**WMA**  
 LAND SURVEYING - CIVIL ENGINEERING - LANDSCAPE ARCHITECTURE  
*Over 100 Years of Service to Clients*  
 207 South Naperville Road, Wheaton, IL 60157  
 (630)668-7603 Fax: (630)662-1760 Email: wma@wmaib.com  
 Design Firm License No. 126-020101 43004

Professional Seal

BUTTERFIELD EAST LOT 6  
 FERRY ROAD  
 AURORA, IL  
 LANDSCAPE PLAN - OVERALL

**ISSUANCES**

4	COA Review	05/27/15
3	DUKE COORD.	05/22/15
2	CITY SUBMITTAL	04/28/2015
1	ISSUE FOR BID	04/16/2015

# Description Date

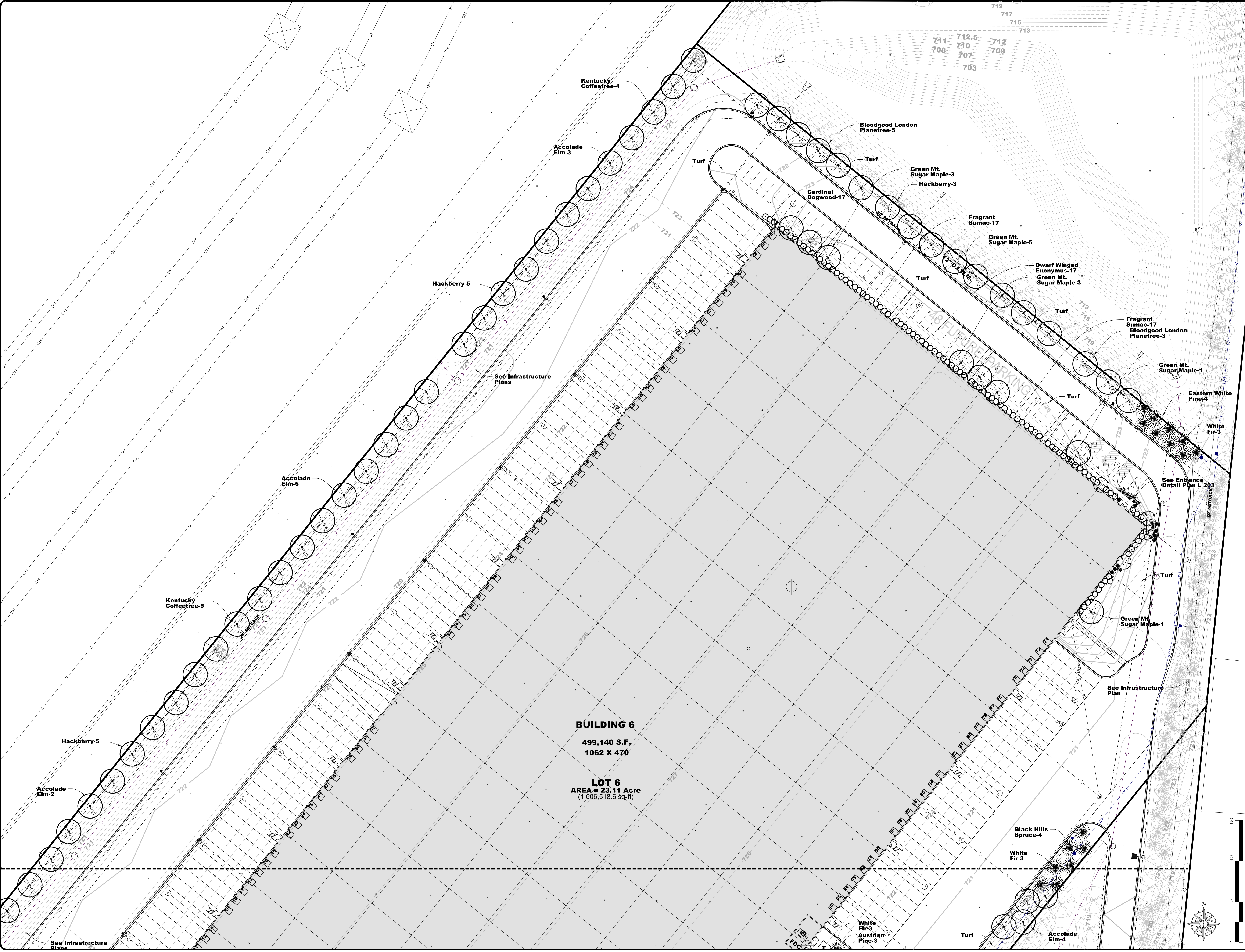
**DRAWING INFORMATION**

Scale: 1"=80'  
 Date: 04/10/2015  
 Checked By: BMB  
 Drawn By: BMB  
 Duke Realty Job #: -----  
 A/E Job #: 41516

DRAWING / SHEET TITLE  
**LANDSCAPE PLAN OVERALL**  
 SHEET NUMBER  
**L-200**

DATE: 5/27/2015  
 FILE: E:\ACTIVE-PROJECTS\1516-333099-01\PHASE 3\Lot 6\1516 Landscape - Lot 6.dgn  
 MODEL: Landscape Plan

**BUTTERFIELD EAST LOT 6**  
**FERRY ROAD**  
**AURORA, IL**  
**LANDSCAPE PLAN - NORTH**



**BUILDING 6**  
 499,140 S.F.  
 1062 X 470

**LOT 6**  
 AREA = 23.11 Acre  
 (1,006,518.6 sq-ft)

**ISSUANCES**


4	COA Review	05/27/15
3	DUKE COORD.	05/22/15
2	CITY SUBMITTAL	04/28/2015
1	ISSUE FOR BID	04/16/2015
#	Description	Date

**DRAWING INFORMATION**

Scale:	1"=40'
Date:	04/10/2015
Checked By:	BMB
Drawn By:	BMB
Duke Realty Job #:	-----
A/E Job #:	41516

**DRAWING / SHEET TITLE**

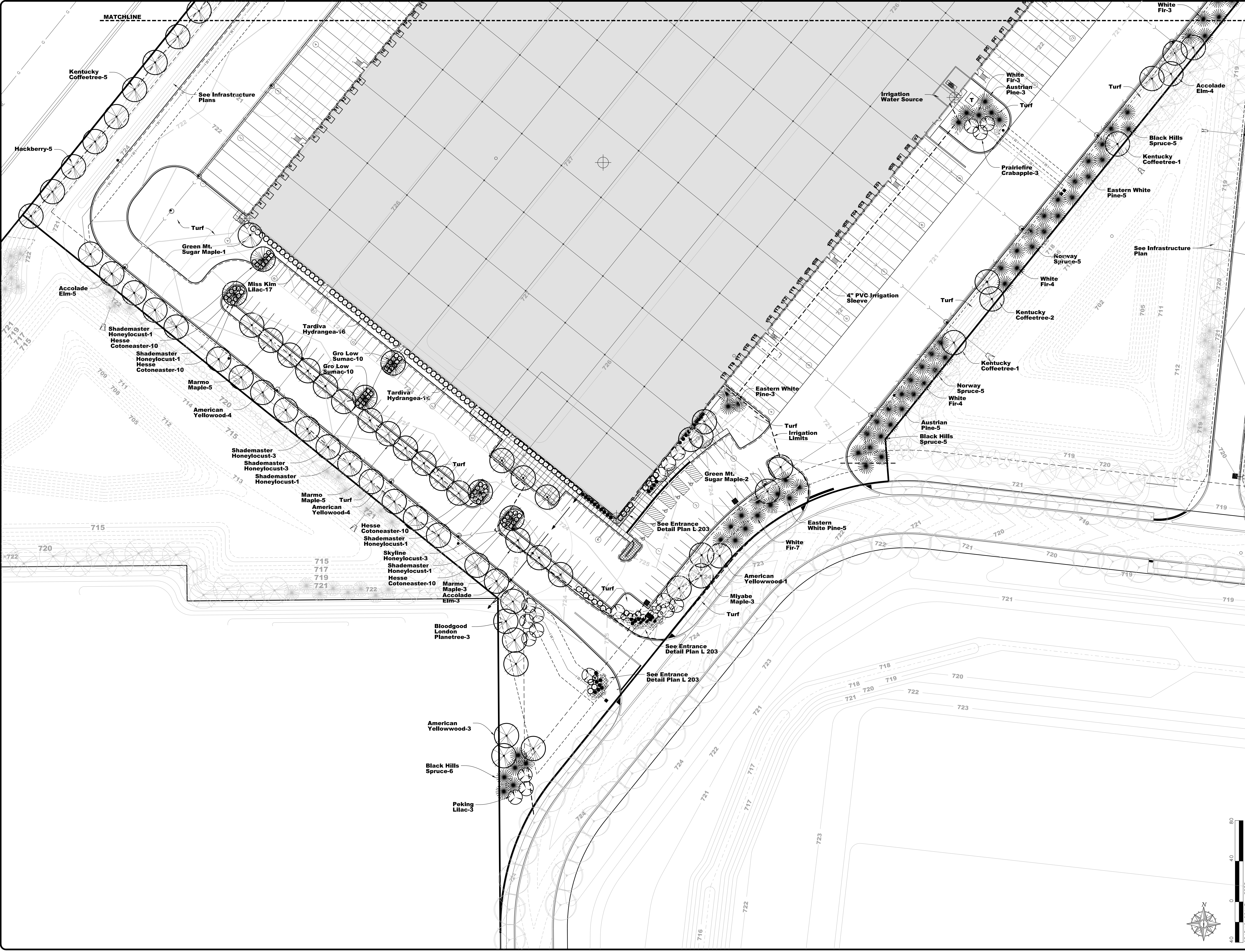
**LANDSCAPE PLAN NORTH**  
 SHEET NUMBER

**L-201**

**BUTTERFIELD EAST LOT 6**

FERRY ROAD  
 AURORA, IL

**LANDSCAPE PLAN - SOUTH**



**ISSUANCES**

#	Description	Date
4	COA Review	05/27/15
3	DUKE COORD.	05/22/15
2	CITY SUBMITTAL	04/28/2015
1	ISSUE FOR BID	04/16/2015

**DRAWING INFORMATION**

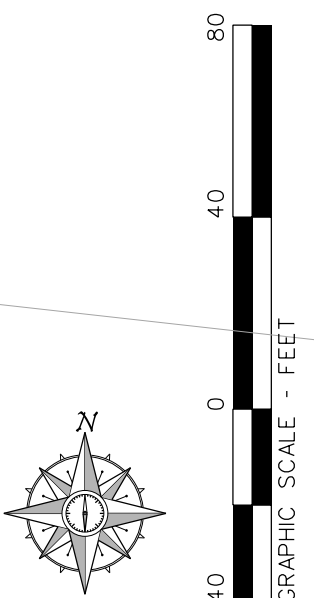
Scale: 1"=40'  
 Date: 04/10/2015  
 Checked By: BMB  
 Drawn By: BMB  
 Duke Realty Job #: -----  
 A/E Job #: 41516

**DRAWING / SHEET TITLE**

**LANDSCAPE PLAN SOUTH**  
 SHEET NUMBER

**L-202**

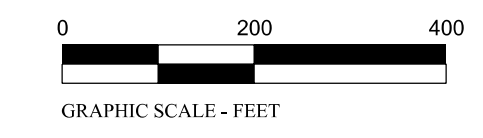
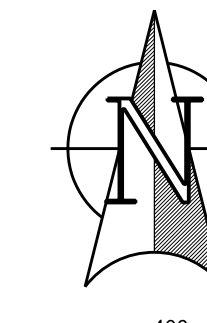
DATE: 5/27/2015  
 FILE: E:\ACTIVE-PROJECTS\1516-333099-DUP\ENGINEERING PLANS\PHASE 3\Lot 6\1516 Landscape - Lot 6.dgn  
 MODEL: Landscape Plan - South







# LANDSCAPE PLAN FOR LOT 4, 103, 104, 105, 107, AND DUKE PARKWAY



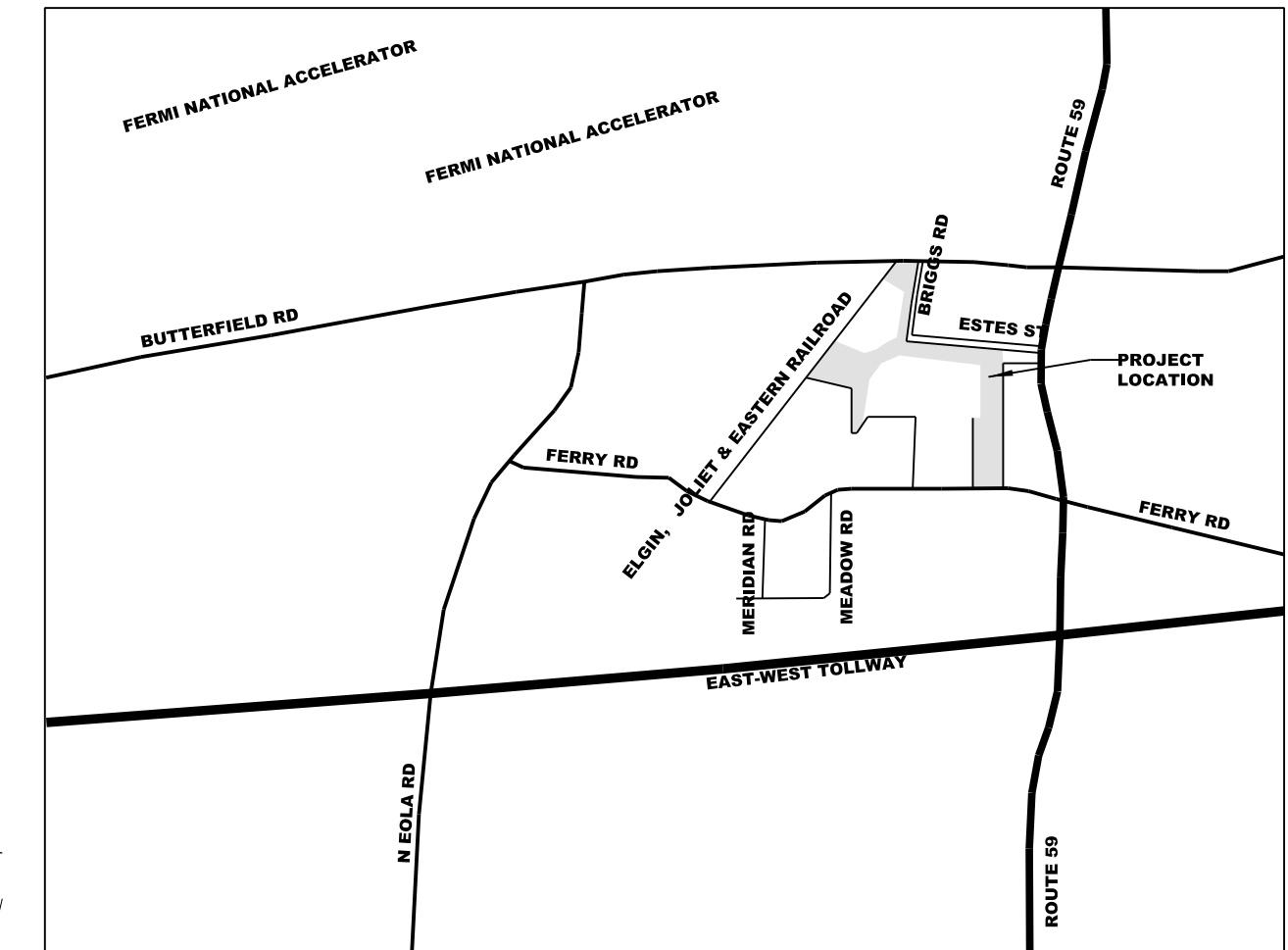
See L-2

### PDD and City of Aurora Landscape Requirements

Parkway Plantings = 3 Canopy Trees per 100'  
 Detention Basin Plantings = 3 Canopy Tree Equivalents per 100' of the High Water Line  
 Briggs and Estes Buffer Yard = 2 Canopy Tree Equivalents per 100' of Lot Line (50% Non Canopy Material)

### Planting and Seeding Legend

- Prairie Seeding
- Shoreline Seeding/Planting
- Emergent Wetland Seeding/Planting
- Duke Parkway ROW Tree (2.5" Ca.)
- Evergreen Tree (6' Minimum)
- Deciduous Canopy Tree (2.5" Ca.)
- Ornamental Tree
- Shrubs



### LOCATION MAP

LOCATED IN SECTION 4 & 5, TOWNSHIP 38 NORTH, RANGE 9 EAST, AND SECTION 33 & 34, TOWNSHIP 39 NORTH, RANGE 9 EAST, CITY OF AURORA, DUPAGE COUNTY, ILLINOIS

Symbol	Description	Value	Unit
⊙	a) Total Canopy Trees	385	385
⊙	Acer: Green Mt., Macro, Myrtle, Crescoda	27%	Percent of Canopy Trees
⊙	Catalpa Northern Catalpa	2%	Percent of Canopy Trees
⊙	Celtis Hackberry	11%	Percent of Canopy Trees
⊙	Gleditsia Shademaster Skyline	3.00%	Percent of Canopy Trees
⊙	Gymnocladia Kentucky Coffeetree	5.00%	Percent of Canopy Trees
⊙	Liquidambar Sweetgum	6.00%	Percent of Canopy Trees
⊙	Liriodendron Tulipree	2.00%	Percent of Canopy Trees
⊙	Quercus Northern Red, Shingle	13.20%	Percent of Canopy Trees
⊙	Platanus Plane tree	1.30%	Percent of Canopy Trees
⊙	Tilia Redmond, Greenspire, Silver	17.40%	Percent of Canopy Trees
⊙	Ulmus Accolade, Frontier, Pioneer	2.5	Caliper at Installation (inches)
⊙		2.5	Caliper at Installation (inches)
●	b) Total Evergreens	202	202
●	Abies White Fir	10%	Percent of Evergreens
●	Juniperus Canaert	3%	Percent of Evergreens
●	Picea Norway, Black Hills, Colorado Blue	21%	Percent of Evergreens
●	Pinus Austrian, Eastern White, Scotch Pine	56%	Percent of Evergreens
●	Taxodium Common Baldypress	9%	Percent of Evergreens
⊙	c) Total Understory Trees	133	133
⊙	Aesculus Ohio Buckeye, Botlebrush	6%	Percent of Understory Trees
⊙	Amelanchier Autumn Brilliance, Serviceberry	20%	Percent of Understory Trees
⊙	Betula River Birch	22%	Percent of Understory Trees
⊙	Cercis Eastern Redbud	9%	Percent of Understory Trees
⊙	Cornus Corneliancherry, Pagoda	17%	Percent of Understory Trees
⊙	Crataegus Thornless Hawthorn	3%	Percent of Understory Trees
⊙	Malus Prairie Fire	10%	Percent of Understory Trees
⊙	Ostrya Ironwood	5%	Percent of Understory Trees
⊙	Viburnum Blackhaw, Nannyberry	8%	Percent of Understory Trees
⊙		6	Caliper at Installation (inches)
⊙		6	Caliper at Installation (inches)
⊙	d) Total Deciduous Shrubs	365	365
⊙	Aronia Red and Black Chokeberry	13%	Percent of Shrubs
⊙	Clethra Summersweet	16%	Percent of Shrubs
⊙	Cornus Cardinal	10%	Percent of Shrubs
⊙	Euonymus Dwarf Winged, Eastern Wahoo	16%	Percent of Shrubs
⊙	Hamamelis Vernal Witchazel	2%	Percent of Shrubs
⊙	Rhus Gro Low, Fragrant	14%	Percent of Shrubs
⊙	Viburnum Chicago Lustre, Arrowwood	2%	Percent of Shrubs
⊙		30	Height at Installation (inches)
⊙		30	Height at Installation (inches)

Symbol	Description	Value	Unit
⊙	a) Total Canopy Trees	385	385
⊙	Acer: Green Mt., Macro, Myrtle, Crescoda	27%	Percent of Canopy Trees
⊙	Catalpa Northern Catalpa	2%	Percent of Canopy Trees
⊙	Celtis Hackberry	11%	Percent of Canopy Trees
⊙	Gleditsia Shademaster Skyline	3.00%	Percent of Canopy Trees
⊙	Gymnocladia Kentucky Coffeetree	5.00%	Percent of Canopy Trees
⊙	Liquidambar Sweetgum	6.00%	Percent of Canopy Trees
⊙	Liriodendron Tulipree	2.00%	Percent of Canopy Trees
⊙	Quercus Northern Red, Shingle	13.20%	Percent of Canopy Trees
⊙	Platanus Plane tree	1.30%	Percent of Canopy Trees
⊙	Tilia Redmond, Greenspire, Silver	17.40%	Percent of Canopy Trees
⊙	Ulmus Accolade, Frontier, Pioneer	2.5	Caliper at Installation (inches)
⊙		2.5	Caliper at Installation (inches)
●	b) Total Evergreens	202	202
●	Abies White Fir	10%	Percent of Evergreens
●	Juniperus Canaert	3%	Percent of Evergreens
●	Picea Norway, Black Hills, Colorado Blue	21%	Percent of Evergreens
●	Pinus Austrian, Eastern White, Scotch Pine	56%	Percent of Evergreens
●	Taxodium Common Baldypress	9%	Percent of Evergreens
⊙	c) Total Understory Trees	133	133
⊙	Aesculus Ohio Buckeye, Botlebrush	6%	Percent of Understory Trees
⊙	Amelanchier Autumn Brilliance, Serviceberry	20%	Percent of Understory Trees
⊙	Betula River Birch	22%	Percent of Understory Trees
⊙	Cercis Eastern Redbud	9%	Percent of Understory Trees
⊙	Cornus Corneliancherry, Pagoda	17%	Percent of Understory Trees
⊙	Crataegus Thornless Hawthorn	3%	Percent of Understory Trees
⊙	Malus Prairie Fire	10%	Percent of Understory Trees
⊙	Ostrya Ironwood	5%	Percent of Understory Trees
⊙	Viburnum Blackhaw, Nannyberry	8%	Percent of Understory Trees
⊙		6	Caliper at Installation (inches)
⊙		6	Caliper at Installation (inches)
⊙	d) Total Deciduous Shrubs	365	365
⊙	Aronia Red and Black Chokeberry	13%	Percent of Shrubs
⊙	Clethra Summersweet	16%	Percent of Shrubs
⊙	Cornus Cardinal	10%	Percent of Shrubs
⊙	Euonymus Dwarf Winged, Eastern Wahoo	16%	Percent of Shrubs
⊙	Hamamelis Vernal Witchazel	2%	Percent of Shrubs
⊙	Rhus Gro Low, Fragrant	14%	Percent of Shrubs
⊙	Viburnum Chicago Lustre, Arrowwood	2%	Percent of Shrubs
⊙		30	Height at Installation (inches)
⊙		30	Height at Installation (inches)

Symbol	Description	Value	Unit
⊙	a) Total Canopy Trees	385	385
⊙	Acer: Green Mt., Macro, Myrtle, Crescoda	27%	Percent of Canopy Trees
⊙	Catalpa Northern Catalpa	2%	Percent of Canopy Trees
⊙	Celtis Hackberry	11%	Percent of Canopy Trees
⊙	Gleditsia Shademaster Skyline	3.00%	Percent of Canopy Trees
⊙	Gymnocladia Kentucky Coffeetree	5.00%	Percent of Canopy Trees
⊙	Liquidambar Sweetgum	6.00%	Percent of Canopy Trees
⊙	Liriodendron Tulipree	2.00%	Percent of Canopy Trees
⊙	Quercus Northern Red, Shingle	13.20%	Percent of Canopy Trees
⊙	Platanus Plane tree	1.30%	Percent of Canopy Trees
⊙	Tilia Redmond, Greenspire, Silver	17.40%	Percent of Canopy Trees
⊙	Ulmus Accolade, Frontier, Pioneer	2.5	Caliper at Installation (inches)
⊙		2.5	Caliper at Installation (inches)
●	b) Total Evergreens	202	202
●	Abies White Fir	10%	Percent of Evergreens
●	Juniperus Canaert	3%	Percent of Evergreens
●	Picea Norway, Black Hills, Colorado Blue	21%	Percent of Evergreens
●	Pinus Austrian, Eastern White, Scotch Pine	56%	Percent of Evergreens
●	Taxodium Common Baldypress	9%	Percent of Evergreens
⊙	c) Total Understory Trees	133	133
⊙	Aesculus Ohio Buckeye, Botlebrush	6%	Percent of Understory Trees
⊙	Amelanchier Autumn Brilliance, Serviceberry	20%	Percent of Understory Trees
⊙	Betula River Birch	22%	Percent of Understory Trees
⊙	Cercis Eastern Redbud	9%	Percent of Understory Trees
⊙	Cornus Corneliancherry, Pagoda	17%	Percent of Understory Trees
⊙	Crataegus Thornless Hawthorn	3%	Percent of Understory Trees
⊙	Malus Prairie Fire	10%	Percent of Understory Trees
⊙	Ostrya Ironwood	5%	Percent of Understory Trees
⊙	Viburnum Blackhaw, Nannyberry	8%	Percent of Understory Trees
⊙		6	Caliper at Installation (inches)
⊙		6	Caliper at Installation (inches)
⊙	d) Total Deciduous Shrubs	365	365
⊙	Aronia Red and Black Chokeberry	13%	Percent of Shrubs
⊙	Clethra Summersweet	16%	Percent of Shrubs
⊙	Cornus Cardinal	10%	Percent of Shrubs
⊙	Euonymus Dwarf Winged, Eastern Wahoo	16%	Percent of Shrubs
⊙	Hamamelis Vernal Witchazel	2%	Percent of Shrubs
⊙	Rhus Gro Low, Fragrant	14%	Percent of Shrubs
⊙	Viburnum Chicago Lustre, Arrowwood	2%	Percent of Shrubs
⊙		30	Height at Installation (inches)
⊙		30	Height at Installation (inches)

**Landscape Data Table:**  
 Lots 103, 104, 105, 107, 4, and Duke Parkway  
**Property Size** 1,124,274 S.F. / 25.81 AC.  
**Lot Coverage** N.A.  
**Open Space/Landscaping** 910,640 S.F.  
**Total Street Frontage (2,357x2)** 4,714 L.F.  
**Total Briggs Estes Buffer Yard** 2,518 L.F.  
**Total High Water Level for Lots 103, 104, 105, and 107** 8,484 L.F.  
**P.I.N.'S**  
 04-33-400-001  
 04-33-301-001  
 04-33-102-001  
 04-33-301-012  
 04-33-404-009  
 04-33-404-007  
 07-04-200-006  
 04-33-301-008  
 07-04-101-017

**Lot 104 BMP - Wet Detention**  
 1,555 L.F. Pond Perimeter  
 46.65 CTE Required  
 47 CTE Provided  
 (35 Trees, 27 Understory/Evergreen Trees, 53 Shrubs)

**Buffer Yard Requirement**  
 10.22 CTE Required  
 10.35 CTE Provided  
 (5 Trees, 12 Understory/Evergreen, 27 Shrubs)

**LOT 104 - Basin 5B**  
 AREA = 3.83 Acre  
**STORMWATER MANAGEMENT BASIN**

**Seed Building Pads with 55 lbs./Ac. Perennial Rye and 70 lbs./Ac Oats (IDOT Class 7)**  
**LOT 6**  
 AREA = 23.45 Acre

**Lot 105 BMP - Wet Detention**  
 1,311 L.F. Pond Perimeter  
 39.33 CTE Required  
 40.58 CTE Provided  
 (30 Trees, 25 Evergreen/Ornamental Trees, 45 Shrubs)

**Briggs Estes Yard**  
 2,918 L.F. Perimeter Yard  
 75.5 CTE Required  
 75.5 CTE Provided  
 (30 Trees, 124 Evergreen and Ornamental Trees, 84 Shrubs)

**Buffer Yard**  
 50.4 CTE Required  
 50.6 CTE Provided  
 (32 Trees, 56 Evergreen/Ornamental Trees)

**LOT 103 - Basin 5A**  
 AREA = 3.03 Acre  
**STORMWATER MANAGEMENT BASIN**

**Lot 103 BMP - Wet Detention**  
 1,487 L.F. Pond Perimeter  
 44.61 CTE Required  
 44.75 CTE Provided  
 (32 Trees, 33 Evergreen/Ornamental Trees, and 35 Shrubs)

**LOT 5**  
 AREA = 47.17 Acre  
**Seed Building Pads with 55 lbs./Ac. Perennial Rye and 70 lbs./Ac Oats (IDOT Class 7)**

**UNIT 6**  
 AREA = 8.91 Acre  
 (NOT INCLUDED IN PHASE)

**LOT 107 - Basin 5C**  
 AREA = 10.10 Acre  
**STORMWATER MANAGEMENT BASIN**

**Lot 107 BMP - Wet Detention**  
 4,131 L.F. Pond Perimeter  
 123.93 CTE Required  
 128.2 CTE Provided  
 (97 Trees, 74 Evergreen/Ornamental Trees, and 130 Shrubs)

**LOT 2**  
 AREA = 49.80 Acre

**LOT 1**  
 AREA = 25.05 Acre

**LOT 106**  
 AREA = 21.76 Acre

DATE: 5/27/2015  
 FILE: E:\ACTIVE\PROJECTS\1516-333809-DuPage\ENGR\BFFINAL\ENGINEERING PLANS\PHASE 3\1516 Final Landscape Plan - 2015.dgn  
 MODEL: L-1

**Duke REALTY**  
 DUKE REALTY LIMITED PARTNERSHIP  
 9377 West Higgins Road, Suite 600  
 Rosemont, IL 60018  
 847.232.5400 • 847.232.5691 (fx)

**WEBSTER, MCGRATH & AHLBERG LTD.**  
**WMA**  
 LAND SURVEYING • CIVIL ENGINEERING • LANDSCAPE ARCHITECTURE  
 Over 60 Years of Service to Clients  
 207 South Nagawanda Road • Wheaton, Illinois 60187  
 (630)668-7603 Fax: (630)882-1760 Email: wma@wmaill.com  
 Design Firm License No. 184-020101

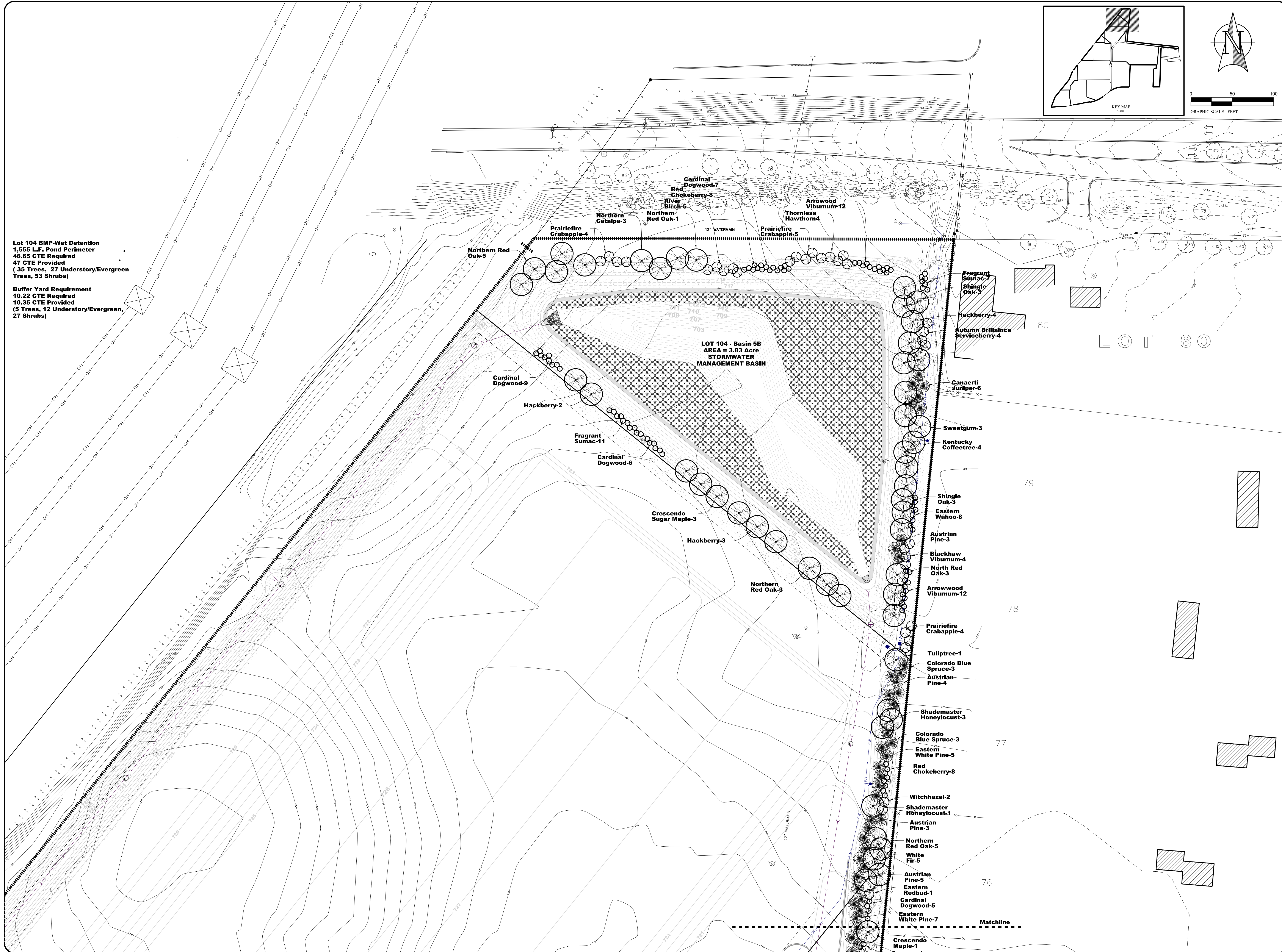
**BUTTERFIELD EAST**  
**PLANNED DEVELOPMENT DISTRICT**  
**INFRASTRUCTURE LANDSCAPE PLANS**  
**FERRY ROAD AND ROUTE 56**  
**CITY OF AURORA, IL**  
 LANDSCAPE PLAN FOR LOT 4, 103, 104, 105, 107, AND DUKE PARKWAY

**ISSUANCES**

#	Description	Date
1	COA Review	05/26/2015

**DRAWING INFORMATION**  
 Scale: 1"=200'  
 Date: 04/28/2015  
 Checked By: SMR/BMB  
 Drawn By: BMB / RLS  
 Duke Realty Job #: \_\_\_\_\_  
 A/E Job #: 41516

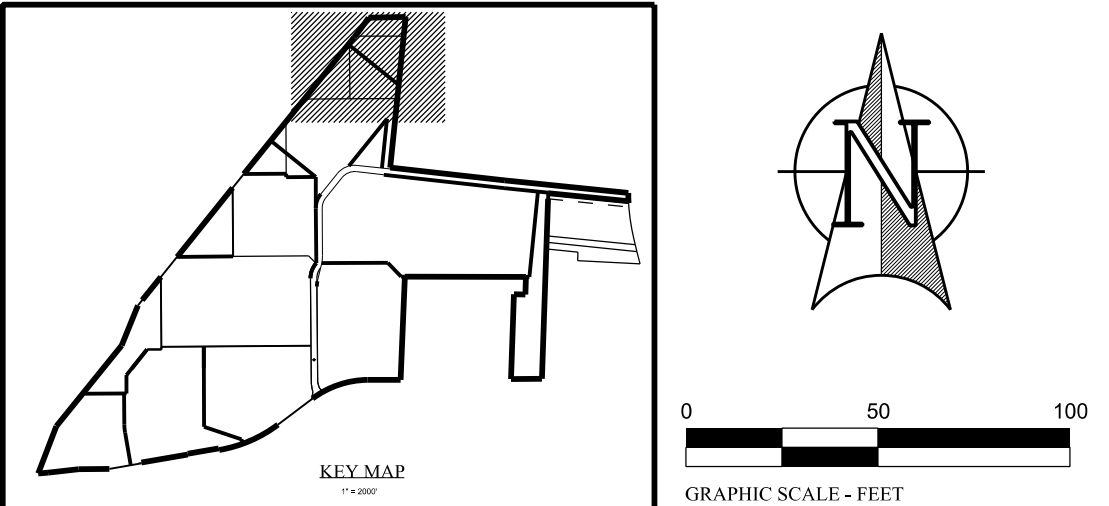
**DRAWING / SHEET TITLE**  
**OVERALL LANDSCAPE PLAN**  
**SHEET NUMBER**  
**L-1**



**Lot 104 BMP-Wet Detention**  
 1,555 L.F. Pond Perimeter  
 46.65 CTE Required  
 47 CTE Provided  
 (35 Trees, 27 Understory/Evergreen  
 Trees, 53 Shrubs)

**Buffer Yard Requirement**  
 10.22 CTE Required  
 10.35 CTE Provided  
 (5 Trees, 12 Understory/Evergreen,  
 27 Shrubs)

**LOT 104 - Basin 5B**  
 AREA = 3.83 Acre  
 STORMWATER  
 MANAGEMENT BASIN



DUKE REALTY LIMITED PARTNERSHIP  
 9377 West Higgins Road, Suite 600  
 Rosemont, IL 60018  
 847.232.5400 - 847.232.5691 (fx)

**WEBSTER, MCGRATH & AHLBERG LTD.**  
**WMA**  
 LAND SURVEYING - CIVIL ENGINEERING - LANDSCAPE ARCHITECTURE  
*Over 60 Years of Service to Clients*  
 207 South Nagerville Road, Wheaton, Illinois 60187  
 (630)668-7603 Fax: (630)682-1760 Email: wma@wmaill.com  
 Design Firm License No. 184-020101

**BUTTERFIELD EAST**  
**PLANNED DEVELOPMENT DISTRICT**  
**INFRASTRUCTURE LANDSCAPE PLANS**  
 FERRY ROAD AND ROUTE 56  
 CITY OF AURORA, IL  
**LOT 6 and LOT 104**

**ISSUANCES**


1	COA Review	05/26/2015
#	Description	Date

**DRAWING INFORMATION**

Scale: 1"=50'  
 Date: 04/28/2015  
 Checked By: SMR/BMB  
 Drawn By: BMB / RLS  
 Duke Realty Job #: \_\_\_\_\_  
 A/E Job #: 41516

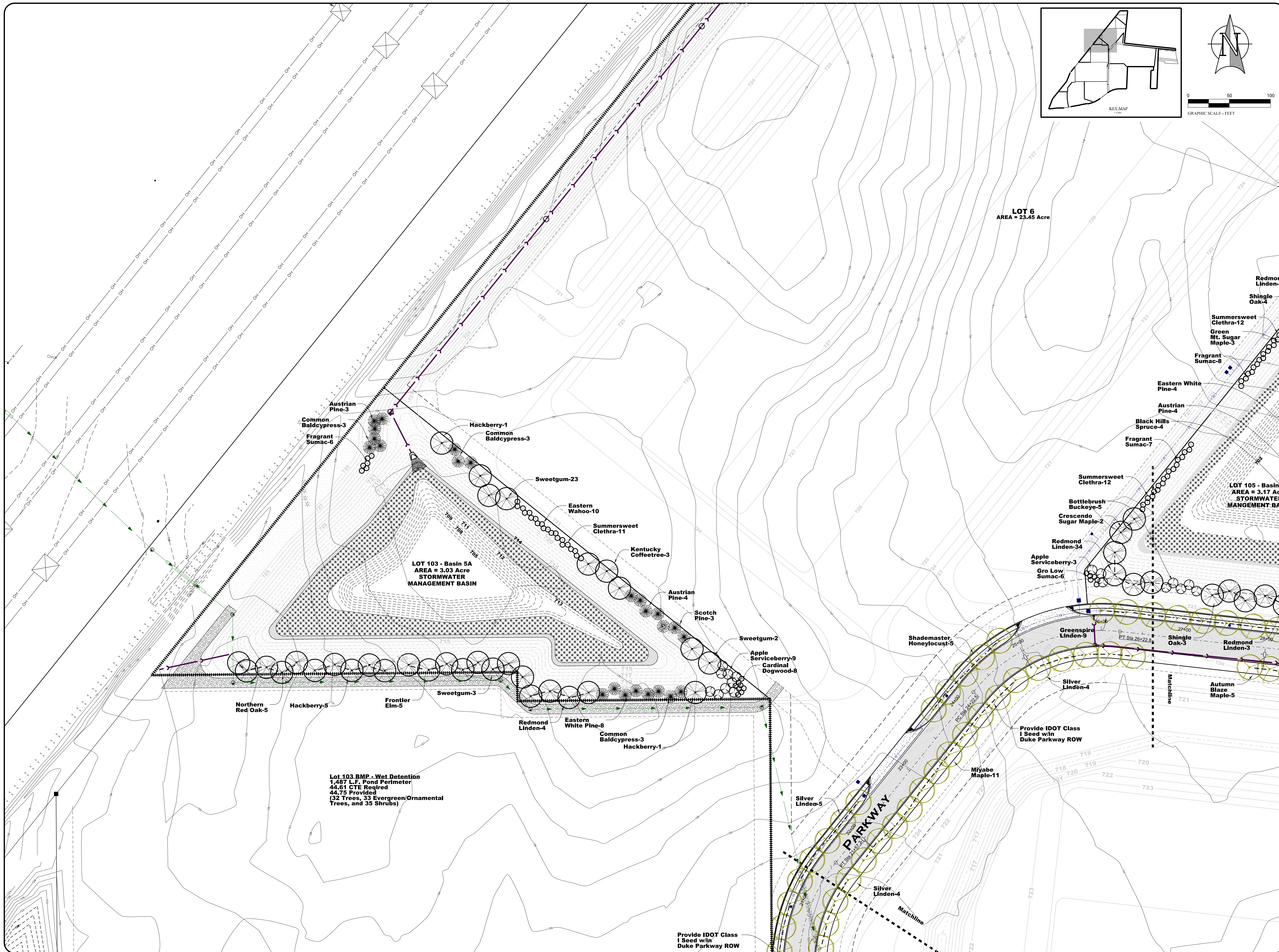
**DRAWING / SHEET TITLE**

**LOT 6, LOT 104 and  
 BRIGGS ESTES  
 LANDSCAPE PLAN**  
 SHEET NUMBER

**L-2**

DATE: 5/27/2015  
 FILE: E:\ACTIVE-PROJECTS\1516-33369-01\Phase\ENGR\BDFINAL ENGINEERING PLANS\PHASE 3\1516 Final Landscape Plan - 2015.dgn  
 MODEL: LZ

DATE: 5/27/2015  
 FILE: E:\ACTIVE-PROJECTS\1516-333809-DuPage\ENGR\BDFINAL ENGINEERING PLANS\1516 Final Landscape Plan - 2015.dgn  
 MODEL: L-3



**Duke REALTY**  
 DUKE REALTY LIMITED PARTNERSHIP  
 9377 West Higgins Road, Suite 600  
 Rosemont, IL 60018  
 847.232.5400 • 847.232.5691 (fx)

**WEBSTER, MCGRATH & AHLBERG LTD.**  
**WMA**  
 LAND SURVEYING • CIVIL ENGINEERING • LANDSCAPE ARCHITECTURE  
*Over 60 Years of Service to Clients*  
 207 South Naperville Road, Wheaton, Illinois 60187  
 (630)668-7603 Fax: (630)682-1760 Email: wma@wmaill.com  
 Design Firm License No. 184-020101

**BUTTERFIELD EAST  
 PLANNED DEVELOPMENT DISTRICT  
 INFRASTRUCTURE LANDSCAPE PLANS**  
 FERRY ROAD AND ROUTE 56  
 CITY OF AURORA, IL

**LOT 6, LOT 103 AND DUKE PARKWAY LANDSCAPE PLAN**

**ISSUANCES**

#	Description	Date
1	COA Review	05/26/2015

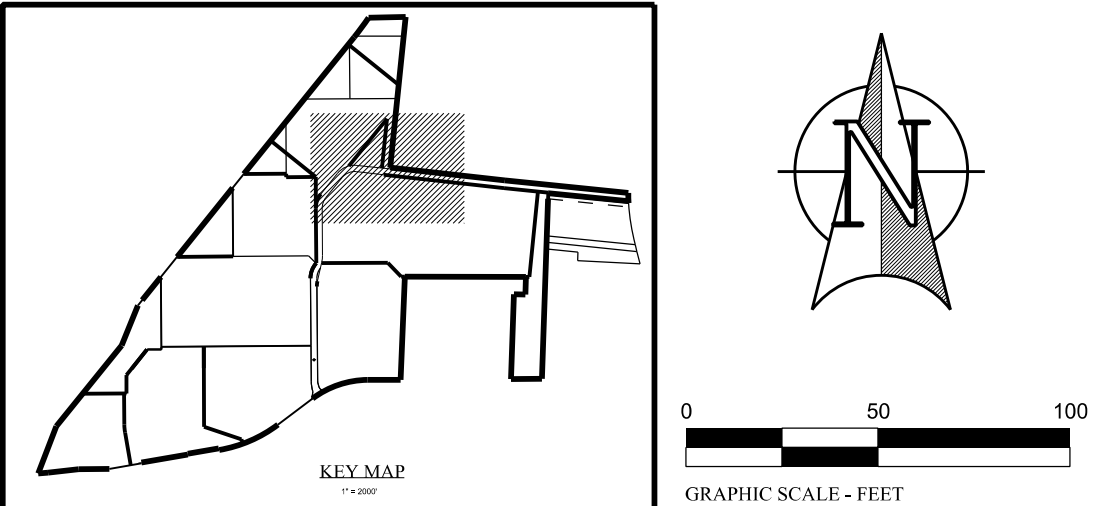
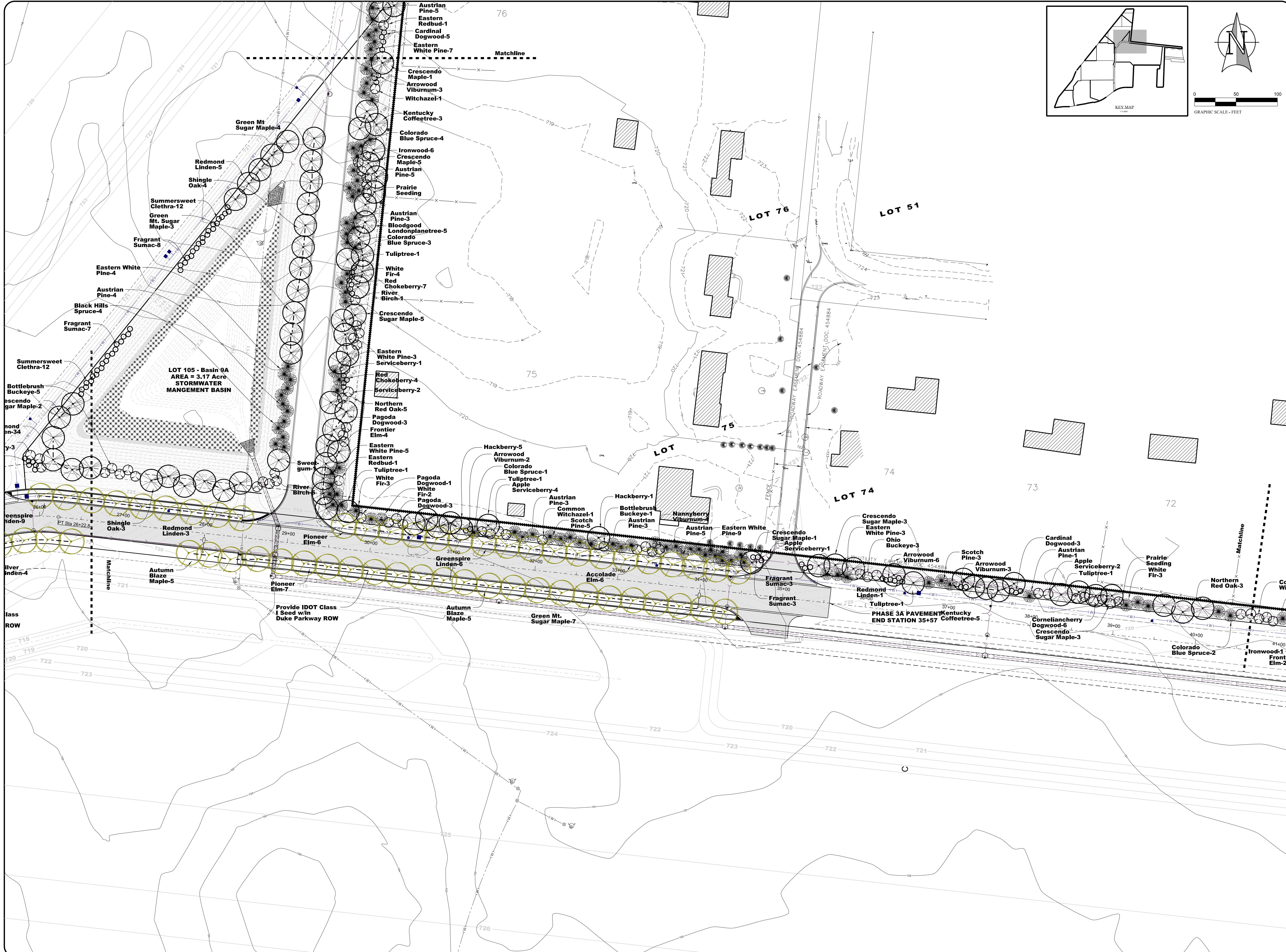
**DRAWING INFORMATION**

Scale:	1"=50'
Date:	04/28/2015
Checked By:	SMR/BMB
Drawn By:	BMB / RLS
Duke Realty Job #:	-----
A/E Job #:	41516

**DRAWING / SHEET TITLE**  
 LOT 6, LOT-103 and  
 DUKE PARKWAY  
 LANDSCAPE PLAN  
 SHEET NUMBER

**L-3**





DUKE REALTY LIMITED PARTNERSHIP  
 9377 West Higgins Road, Suite 600  
 Rosemont, IL 60018  
 847.232.5400 • 847.232.5691 (fx)

**WEBSTER, MCGRATH & AHLBERG LTD.**  
**WMA**  
 LAND SURVEYING • CIVIL ENGINEERING • LANDSCAPE ARCHITECTURE  
*Over 60 Years of Service to Clients*  
 207 South Naperville Road, Naperville, Illinois 60563  
 (630)668-7603 Fax: (630)682-1760 Email: wma@wmaill.com  
 Design Firm License No. 194-020101

**BUTTERFIELD EAST  
 PLANNED DEVELOPMENT DISTRICT  
 INFRASTRUCTURE LANDSCAPE PLANS  
 FERRY ROAD AND ROUTE 56  
 CITY OF AURORA, IL**

**BRIGGS ESTES AND LOT 105 LANDSCAPE PLAN**

ISSUANCES


1	COA Review	05/26/2015
#	Description	Date

DRAWING INFORMATION

Scale:	1"=50'
Date:	04/28/2015
Checked By:	SMR/BMB
Drawn By:	BMB / RLS
Duke Realty Job #:	-----
A/E Job #:	41516

DRAWING / SHEET TITLE  
**BRIGGS ESTES and  
 LOT 105  
 LANDSCAPE PLAN**  
 SHEET NUMBER

**L-4**

DATE: 5/27/2015  
 FILE: E:\ACTIVE-PROJECTS\1516-333809-DuPage\ENGR\BB\FINAL ENGINEERING PLANS\PHASE 3\1516 Final Landscape Plan - 2015.dgn  
 MODEL: L-4



**Duke REALTY**

DUKE REALTY LIMITED PARTNERSHIP  
 9377 West Higgins Road, Suite 600  
 Rosemont, IL 60018  
 847.232.5400 • 847.232.5691 (fx)

**WEBSTER, MCGRATH & AHLBERG LTD.**

**WMA**

LAND SURVEYING • CIVIL ENGINEERING • LANDSCAPE ARCHITECTURE

*Over 60 Years of Service to Clients*

207 South Naperville Road • Wheaton, Illinois 60187  
 (630)668-7603 Fax: (630)852-1760 Email: [emahls@wmailltd.com](mailto:emahls@wmailltd.com)  
 Design Firm License No. 184-020101

**BUTTERFIELD EAST**

**PLANNED DEVELOPMENT DISTRICT**

**INFRASTRUCTURE LANDSCAPE PLANS**

FERRY ROAD AND ROUTE 56  
 CITY OF AURORA, IL

**BRIGGS ESTES AND LOT 107 LANDSCAPE PLAN**

**ISSUANCES**

#	Description	Date
1	COA Review	05/26/2015

**DRAWING INFORMATION**

Scale:	1"=50'
Date:	04/28/2015
Checked By:	SMR/BMB
Drawn By:	BMB / RLS
Duke Realty Job #:	-----
A/E Job #:	41516

**DRAWING / SHEET TITLE**

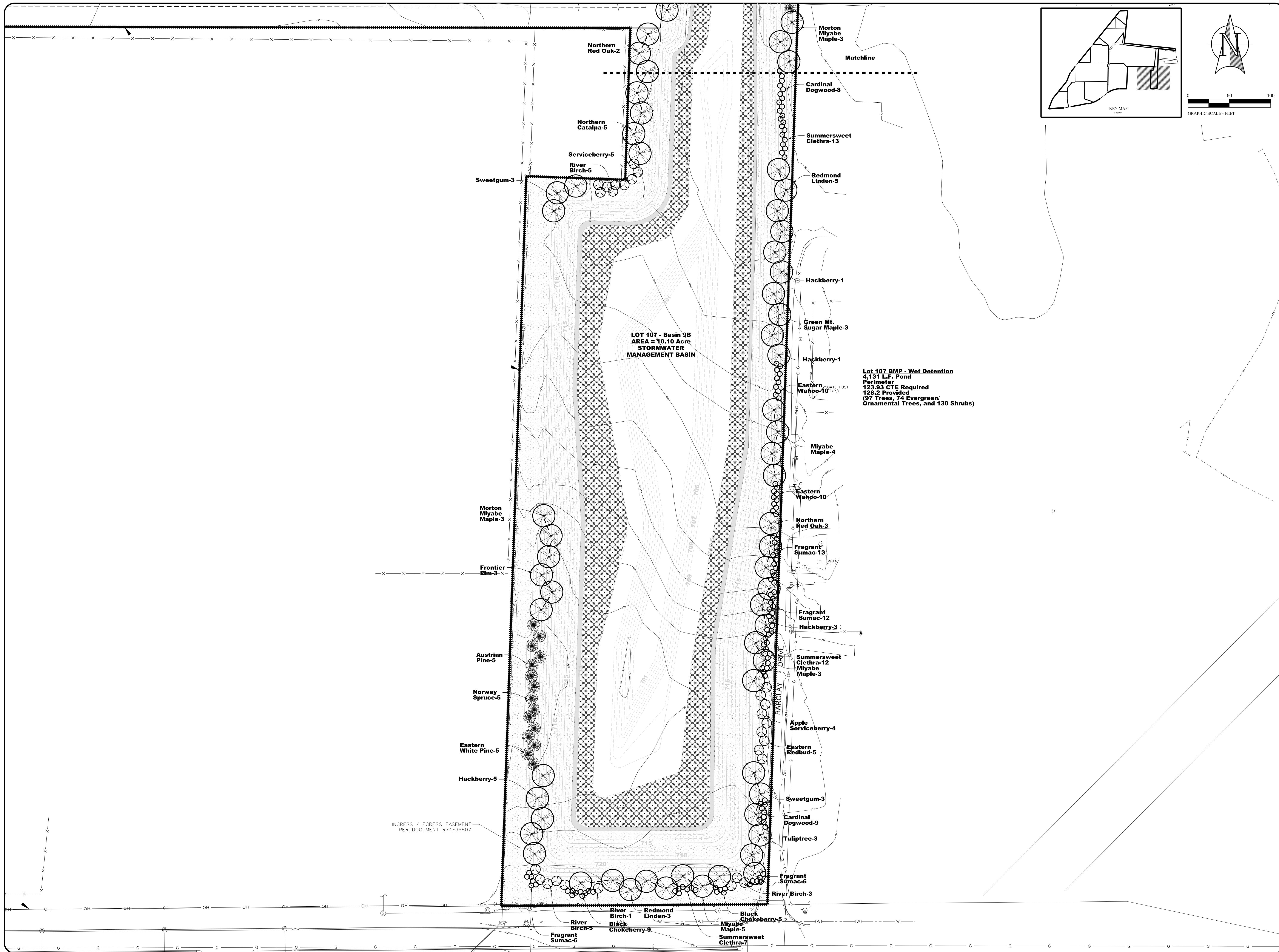
**BRIGGS ESTES and LOT 107 LANDSCAPE PLAN**

SHEET NUMBER

**L-5**

DATE: 5/27/2015  
 FILE: E:\ACTIVE-PROJECTS\1516-333609-DuPage\NOR\BFFINAL ENGINEERING PLANS\PHASE 3A\1516 Final Landscape Plan - 2015.dgn  
 MODEL: L-5

DATE: 5/27/2015  
 FILE: E:\ACTIVE-PROJECTS\1516-333899-DuPage\ENGR\BBF\FINAL ENGINEERING PLANS\PHASE 3\1516 Final Landscape Plan - 2015.dgn  
 MODEL: L-6



**Duke REALTY**

DUKE REALTY LIMITED PARTNERSHIP  
 9377 West Higgins Road, Suite 600  
 Rosemont, IL 60018  
 847.232.5400 • 847.232.5691 (fx)

**WEBSTER, MCGRATH & AHLBERG LTD.**  
**WMA**  
 LAND SURVEYING • CIVIL ENGINEERING • LANDSCAPE ARCHITECTURE  
*Over 60 Years of Service to Clients*  
 207 South Naperville Road • Wheaton, Illinois 60187  
 (630)668-7603 Fax: (630)682-1760 Email: wma@wmaill.com  
 Design Firm License No. 184-020101

**BUTTERFIELD EAST  
 PLANNED DEVELOPMENT DISTRICT  
 INFRASTRUCTURE LANDSCAPE PLANS  
 FERRY ROAD AND ROUTE 56  
 CITY OF AURORA, IL  
 LOT 107 LANDSCAPE PLAN**

**ISSUANCES**


1	COA Review	05/26/2015
#	Description	Date

**DRAWING INFORMATION**

Scale: 1"=50'  
 Date: 04/28/2015  
 Checked By: SMR/BMB  
 Drawn By: BMB / RLS  
 Duke Realty Job #: -----  
 A/E Job #: 41516

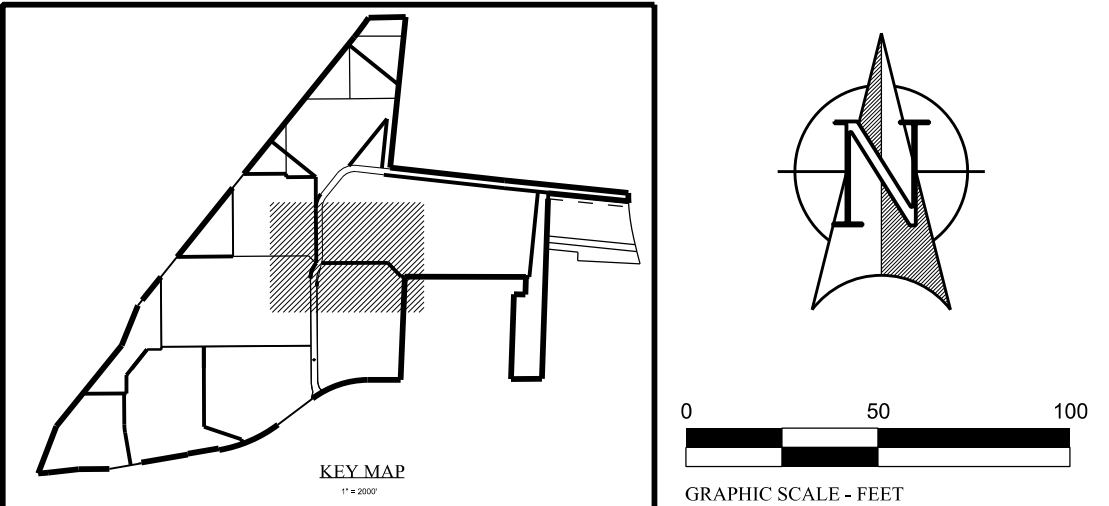
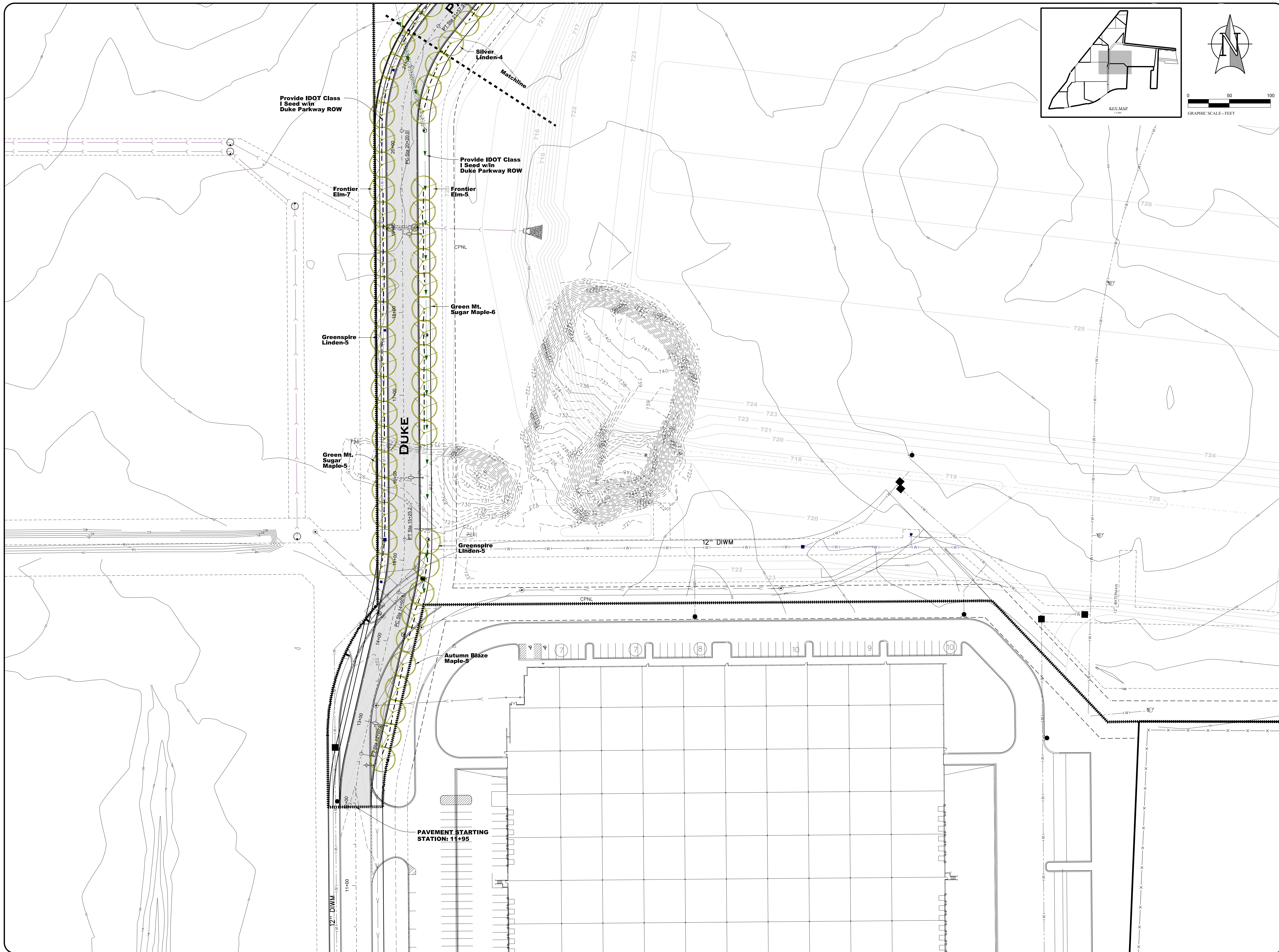
**DRAWING / SHEET TITLE**

**LOT 107  
 LANDSCAPE PLAN**

**SHEET NUMBER**

**L-6**

DATE: 5/27/2015  
 FILE: E:\ACTIVE-PROJECTS\1516-333809-DuPage\ENGR\BBFFINAL ENGINEERING PLANS\PHASE 3\1516 Final Landscape Plan - 2015.dgn  
 MODEL: L7



DUKE REALTY LIMITED PARTNERSHIP  
 9377 West Higgins Road, Suite 600  
 Rosemont, IL 60018  
 847.232.5400 • 847.232.5691 (fx)

**WEBSTER, MCGRATH & AHLBERG LTD.**  
**WMA**  
 LAND SURVEYING • CIVIL ENGINEERING • LANDSCAPE ARCHITECTURE  
*Over 60 Years of Service to Clients*  
 207 South Naperville Road, Wheaton, Illinois 60187  
 (630)668-7603 Fax: (630)852-1760 Email: wma@wmaill.com  
 Design Firm License No. 184-020101

**BUTTERFIELD EAST  
 PLANNED DEVELOPMENT DISTRICT  
 INFRASTRUCTURE LANDSCAPE PLANS  
 FERRY ROAD AND ROUTE 56  
 CITY OF AURORA, IL  
 DUKE PARKWAY LANDSCAPE PLAN**

**ISSUANCES**

#	Description	Date

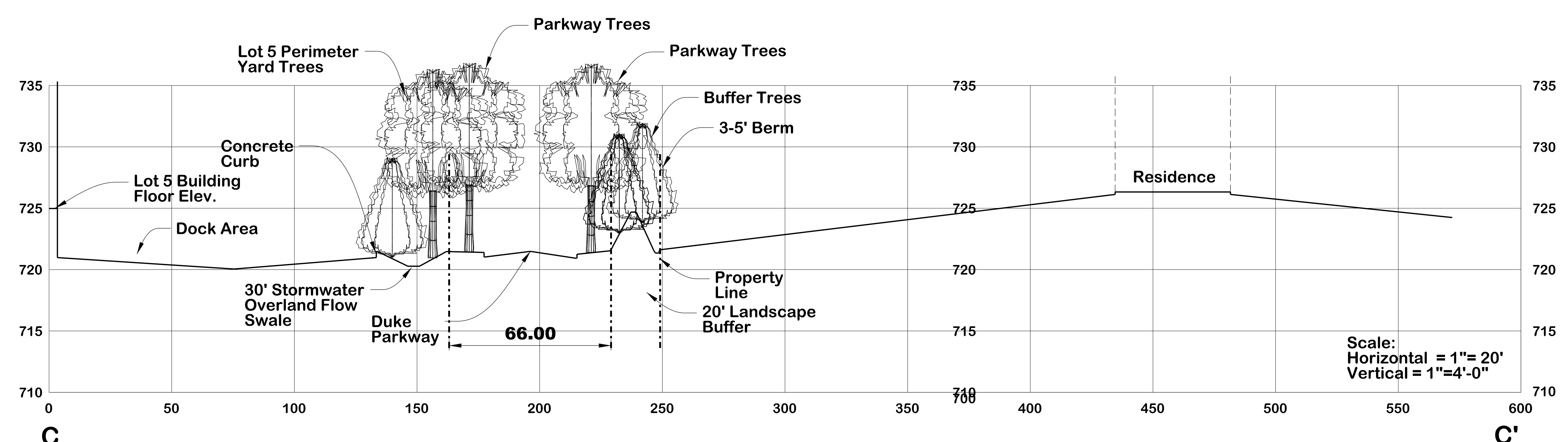
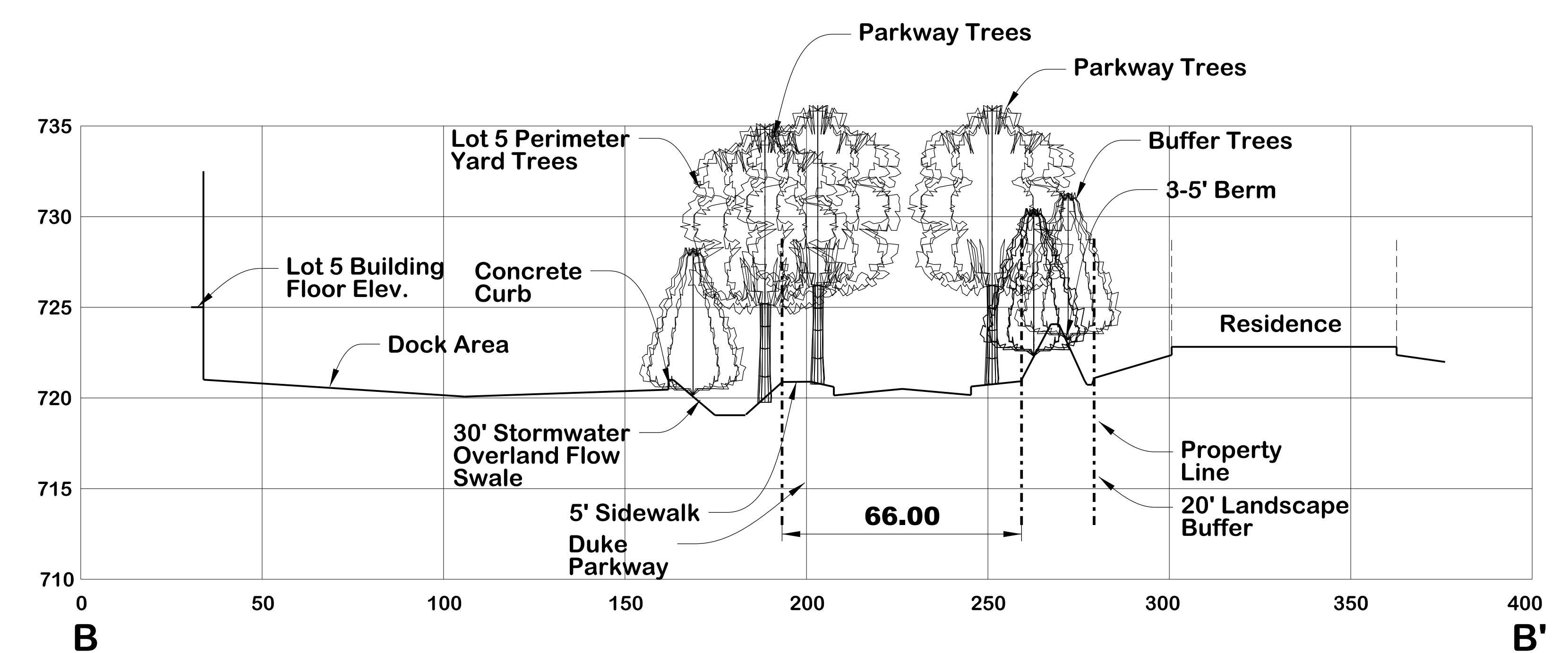
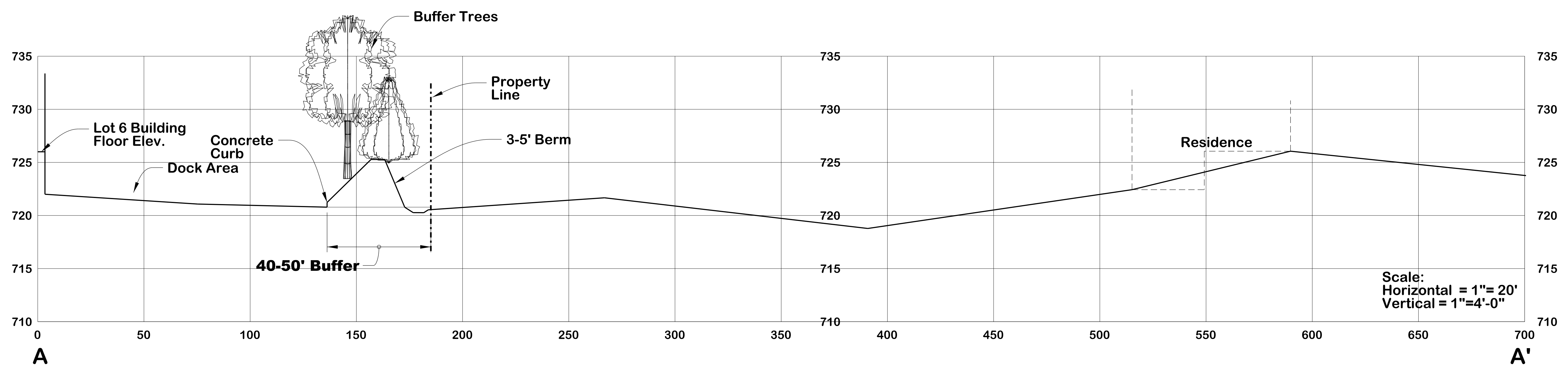
1	COA Review	05/26/2015
#	Description	Date

**DRAWING INFORMATION**

Scale:	1"=50'
Date:	04/28/2015
Checked By:	SMR/BMB
Drawn By:	BMB / RLS
Duke Realty Job #:	-----
A/E Job #:	41516

**DRAWING / SHEET TITLE**  
 DUKE PARKWAY  
 LANDSCAPE PLAN  
**SHEET NUMBER**

**BUTTERFIELD EAST**  
**PLANNED DEVELOPMENT DISTRICT**  
**INFRASTRUCTURE LANDSCAPE PLANS**  
 FERRY ROAD AND ROUTE 56  
 CITY OF AURORA, IL  
**CROSS SECTIONS**



**ISSUANCES**

#	Description	Date
1	COA Review	05/26/2015

**DRAWING INFORMATION**

Scale:	1"=50'
Date:	04/28/2015
Checked By:	SMR/BMB
Drawn By:	BMB / RLS
Duke Realty Job #:	-----
A/E Job #:	41516

**DRAWING / SHEET TITLE**  
**CROSS SECTIONS**  
**SHEET NUMBER**

DATE: 5/27/2015  
 FILE: E:\ACTIVE-PROJECTS\1516-333609-DuPage\ENGR\BBF\FINAL ENGINEERING PLANS\PHASE 3\1516 Final Landscape Plan - 2015.dgn  
 MODEL: L-8

**BUTTERFIELD EAST  
PLANNED DEVELOPMENT DISTRICT  
INFRASTRUCTURE LANDSCAPE PLANS  
FERRY ROAD AND ROUTE 56  
CITY OF AURORA, IL  
DETAILS AND PLANT LIST**

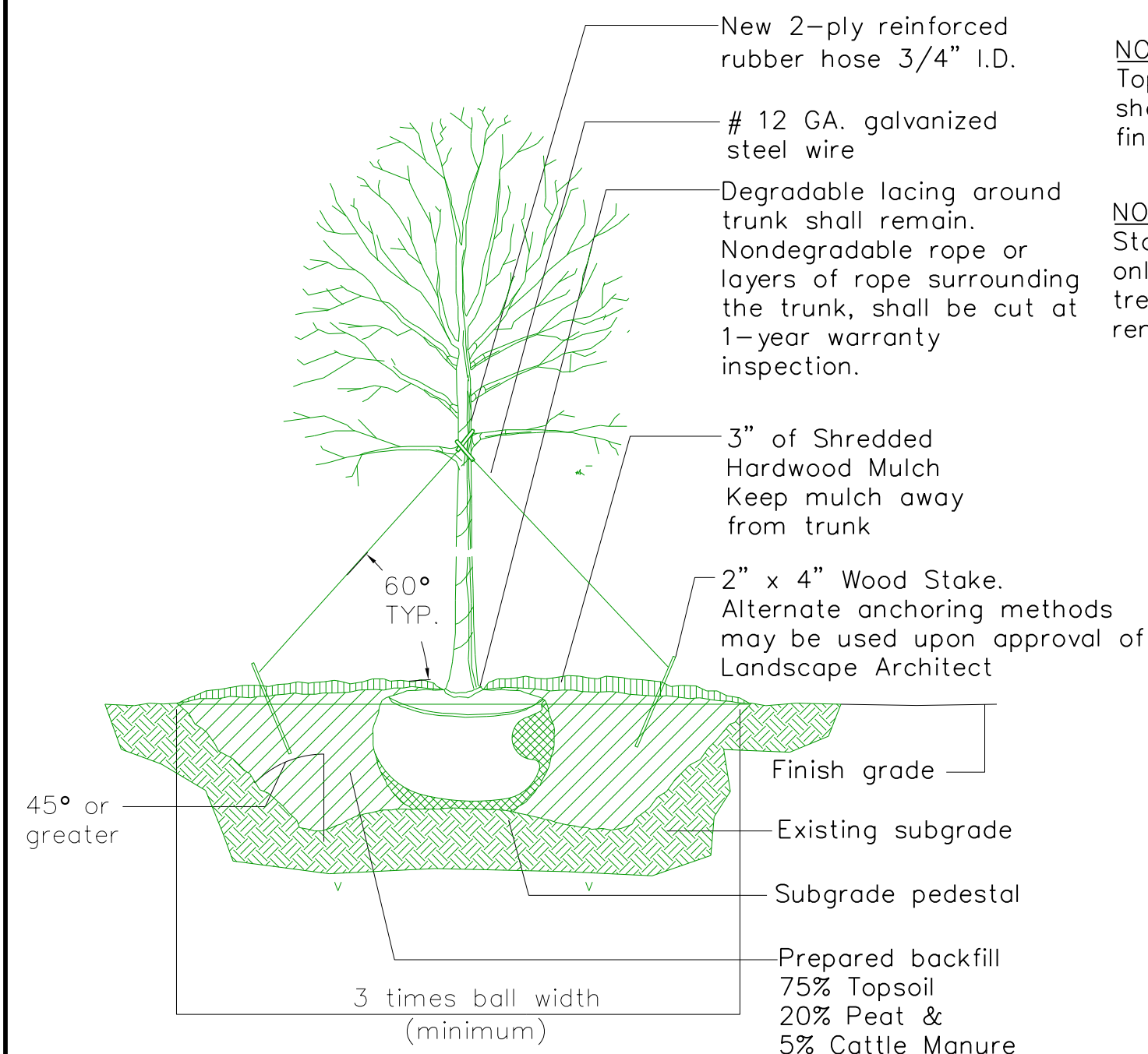
**Emergent Wetland Seeding/Planting - Normal Water Line to 6" below**

Emergent Plantings	Seed oz./Ac.	Plugs/Ac.
Acaorus calamus	0.50	494
Alisma subcordatum	1.25	
Elocharis obtusa	0.375	
Elocharis palustris	0.375	
Glyceria grandis	0.375	
Hibiscus laevis	0.250	
Iris virginica shrevei	0.50	494
Juncus effusus	0.50	
Loersia oryzoides	1.25	494
Pontederia cordata	0.25	494
Sagataria latifolia	1.25	494
Scirpus acutus	0.25	988
Scirpus pungens	0.250	
Scirpus validus	0.25	988
Sparganium eurycarpum	1.0	988
<b>Total Plantings</b>	<b>8.125 lbs./Ac.</b>	<b>5,434 Plugs/Ac.</b>

**Shoreline Seeding/Planting - Normal Water Line to 1' above**

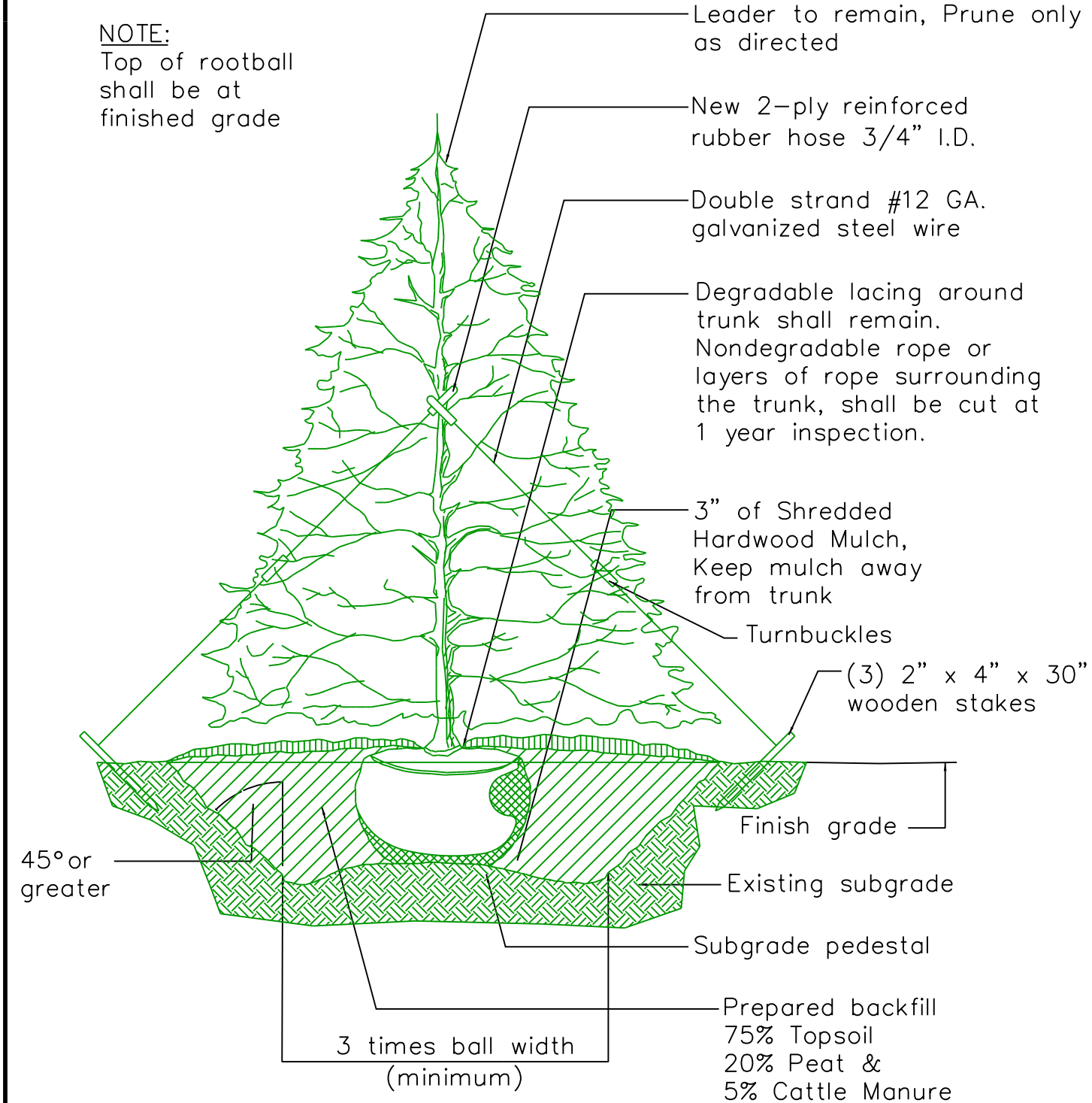
Shoreline Seeding and Planting	Seed oz./Ac.	Plugs/Ac.
Andropogon gerardii	36	400
Calamagrostis canadensis	10.0	
Carex bebbii	2.0	
Carex comosa	2.0	400
Carex cristatella	2.0	
Carex stipata	6.0	100
Carex tribuloides	2.0	
Carex vulpinoidea	6.0	100
Elocharis palustris	1.0	100
Elymus virginicus	6.0	600
Glyceria striata	48.0	100
Loersia oryzoides	8.0	400
Panicum virgatum	8.0	400
Scirpus atrovirens	48.0	400
Scirpus cyperinus	1.0	100
Scirpus validus creber	1.0	400
Spartina pectinata	16.0	100
<b>Total Plantings</b>	<b>198 oz./ac.</b>	<b>3700 Plugs/Ac.</b>

**Prairie Seeding**  
**IDOT Class 4A and 5A with Cover Crop Seeding of Seed Oats at 30.0 lbs./Ac.**  
**Fall Seeding Cover Crop shall be Winter Wheat or ReGreen at 10.0 lbs/ Ac.**



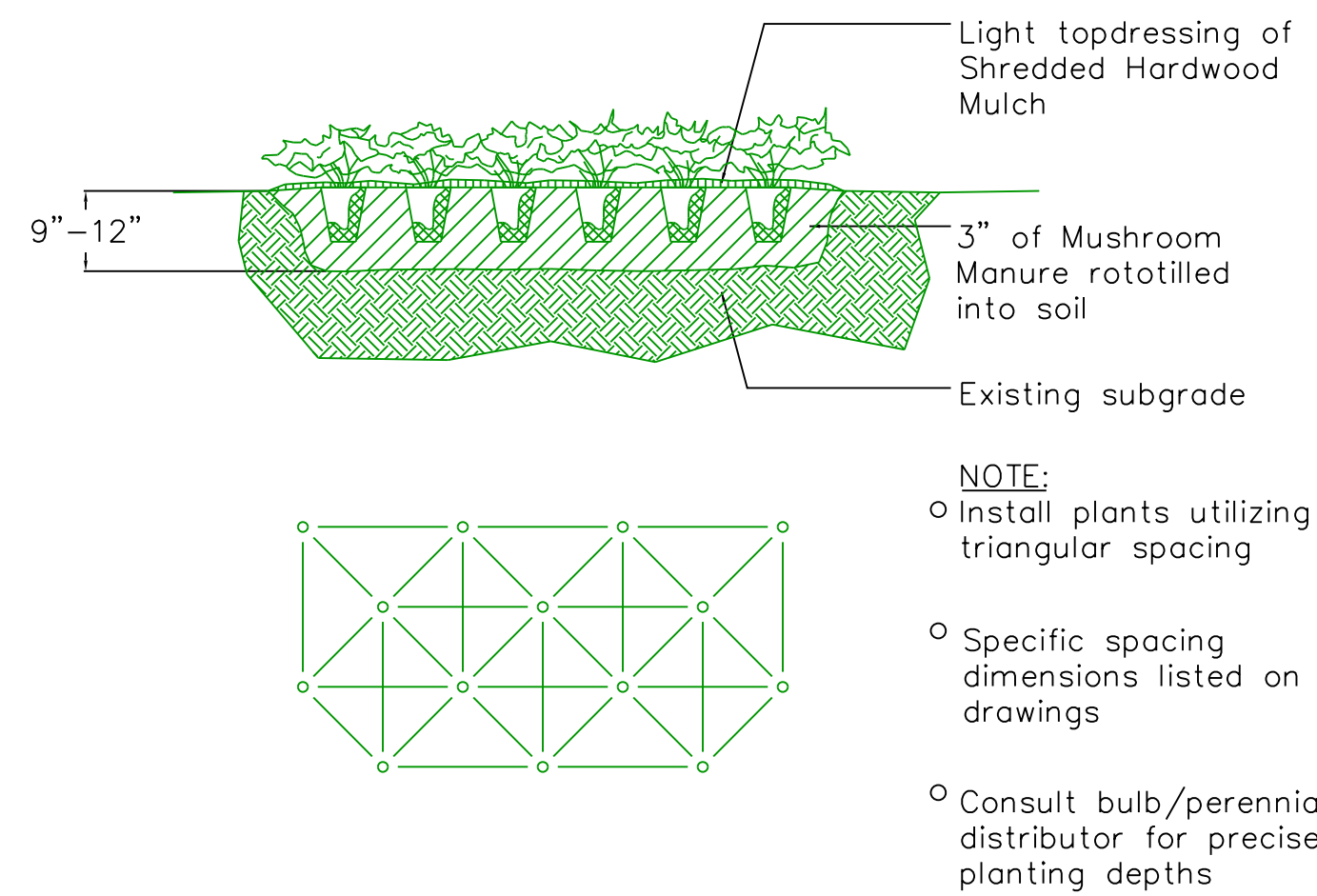
**DECIDUOUS TREE INSTALLATION DETAIL**

N.T.S.

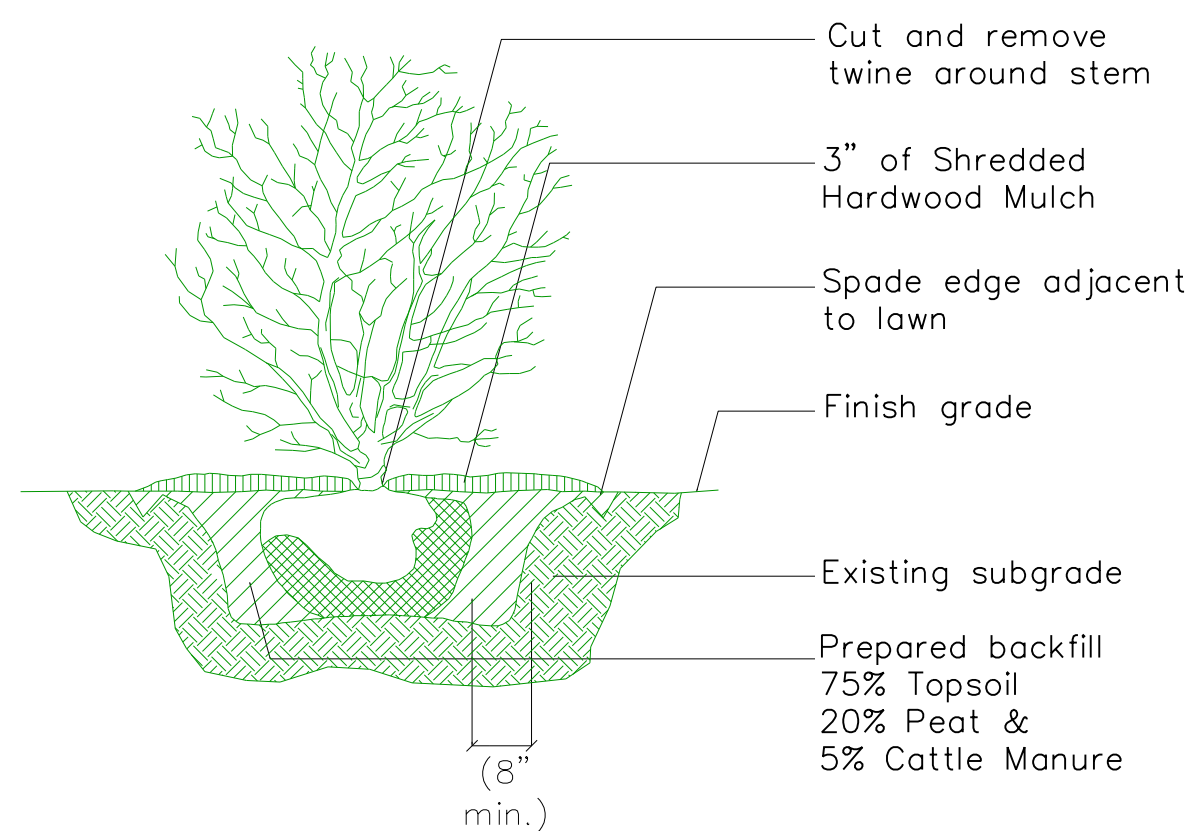


**EVERGREEN TREE INSTALLATION DETAIL**

N.T.S.



**PERENNIAL, GROUNDCOVER, & ORNAMENTAL GRASS INSTALLATION DETAIL**  
N.T.S.



**SHRUB INSTALLATION DETAIL**

N.T.S.

**GENERAL NOTES**

- Quantity lists are supplied as a convenience. The Contractor shall verify all quantities.
- Landscape Contractor shall verify locations of all underground utilities prior to digging. Contact "J.U.L.I.E." (Joint Utility Locating for Excavators) 1-800-892-0123.
- Planting beds shall be elevated slightly to provide for proper drainage. Rootballs of trees shall be elevated above finished grade as illustrated on installation details. All grading shall provide slopes which are smooth, continuous and have positive drainage in all areas. Should the Landscape Contractor encounter drainage problems which may be detrimental to the growth of the specified plant materials, the Owner shall be notified accordingly, prior to installation.
- Plant material shall be nursery grown and be either ball and burlapped or container grown. Sizes indicated on plant list represent minimum requirements. The requirements for measurement, branching and ball size shall conform to the "American Standard for Nursery Stock" (latest edition) by the American Association of Nurserymen, Inc. Plant materials for groupings or where symmetry is critical, shall be matched as nearly as possible.
- Restore all disturbed area with 4" topsoil, Excelsior Blanket and Seed with IDOT Class 1 Seed Mix

Lot 103 Plant List	Qty./Root Form/Size	Briggs Estes Buffer	Qty./Root Form/Size	Lot 105 Plant List	Qty./Root Form/Size
Trees		Trees		Trees	
Hackberry	7/b&b/2.5"	Crescendo Sugar Maple	21/b&b/2.5"	Crescendo Sugar Maple	2/b&b/2.5"
Celtis occidentalis		Acer saccharum 'Morton'		Acer saccharum 'Crescendo'	
Kentucky Coffeetree	3/b&b/2.5"	Hackberry	9/b&b/2.5"	Green Mt. Sugar Maple	7/b&b/2.5"
Gymnocladus dioicus		Celtis occidentalis		Acer saccharum 'Green Mt.	
Sweetgum	8/b&b/2.5"	Shademaster Honeylocust	7/b&b/2.5"	Sweetgum	1/b&b/2.5"
Liquidambar styraciflua		Gleditsia triacanthos inermis		Liquidambar styraciflua	
Northern Red Oak	5/b&b/2.5"	Kentucky Coffeetree	8/b&b/2.5"	Shingle Oak	7/b&b/2.5"
Quercus rubra		Gymnocladus dioicus		Quercus imbricaria	
Redmond Linden	4/b&b/2.5"	Tuliptree	6/b&b/2.5"	Redmond Linden	12/b&b/2.5"
Tilia americana 'Redmond'		Liriodendron tulipifera		Tilia americana 'Redmond'	
Frontier Elm	5/b&b/2.5"	Bloodgood London Planetree	5/b&b/2.5"	Total	29
Ulmus 'Frontier'		Platanus acerfolia 'Bloodgood'		Evergreen Trees	
Total	27	Northern Red Oak	13/b&b/2.5"	Black Hills Spruce	4/b&b/6"
Evergreen Trees		Quercus rubra		Picea glauca densata	
Austrian Pine	7/b&b/6"	Quercus rubra		Eastern White Pine	4/b&b/6"
Pinus nigra		Redmond Linden	1/b&b/2.5"	Pinus strobus	
Eastern White Pine	8/b&b/6"	Tilia americana 'Redmond'		Austrian Pine	4/b&b/6"
Pinus strobus		Frontier Elm	6/b&b/2.5"	Pinus nigra	
Scotch Pine	3/b&b/6"	Ulmus 'Frontier'		Total	12
Pinus sylvestris		Total	76	Ornamental Trees	
Common Baldcypress	12/b&b/6"	Evergreen Trees		Bottlebrush Buckeye	5/b&b/6"
Taxodium distichum		White Fir	20/b&b/6"	Aesculus parviflora	
Total	30	Abies concolor		Apple Serviceberry	3/b&b/6"
Ornamental Trees		Colorado Blue Spruce	26/b&b/6"	Amelanchier grandiflora	
Apple Serviceberry	9/b&b/6"	Picea pungens 'Glauca'		River Birch	5/b&b/10"
Amelanchier grandiflora		Austrian Pine	37/b&b/6"	Betula nigra 'Heritage'	
Total	9	Pinus nigra		Total	13
Shrubs		Eastern White Pine	27/b&b/6"	Shrubs	
Summersweet Clethra	11/b&b/30"	Pinus strobus		Summersweet Clethra	24/b&b/30"
Clethra alnifolia 'Summersweet'		Scotch Pine	8/b&b/6"	Clethra alnifolia 'Summersweet'	
Cardinal Dogwood	8/b&b/30"	Pinus sylvestris		Fragrant Sumac	15/b&b/30"
Cornus sericea 'Cardinal'		Total	118	Rhus aromatica	
Eastern Wahoo	10/b&b/30"	Ornamental Trees		Gro Low Sumac	6/b&b/30"
Euonymus atropurpureus		Ohio Buckeye	3/b&b/2.5"	Rhus aromatica 'Gro Low'	
Fragrant Sumac	6/b&b/30"	Aesculus glabra		Total	45
Rhus aromatica		Bottlebrush Buckeye	4/b&b/6"	Lot 107 Plant List	
Total	35	Aesculus parviflora		Trees	
Lot 104 Plant List		Serviceberry	2/b&b/6"	Miyabe Maple	18/b&b/2.5"
Trees		Amelanchier canadensis		Acer myabei 'Morton'	
Crescendo Sugar Maple	3/b&b/2.5"	Apple Serviceberry	7/b&b/6"	Crescendo Sugar Maple	5/b&b/2.5"
Acer saccharum 'Morton'		Amelanchier grandiflora		Acer saccharum 'Crescendo'	
Northern Catalpa	3/b&b/3"	River Birch	1/b&b/8-10"	Green Mt. Sugar Maple	4/b&b/2.5"
Catalpa speciosa		Betula nigra 'Heritage'		Acer saccharum 'Green Mt.	
Hackberry	9/b&b/2.5"	Eastern Redbud	2/b&b/2.5"	Northern Catalpa	5/b&b/2.5"
Celtis occidentalis 'Chicagoland'		Cercis canadensis		Catalpa speciosa	
Kentucky Coffeetree	4/b&b/2.5"	Pagoda Dogwood	7/b&b/6"	Hackberry	18/b&b/2.5"
Gymnocladus dioicus		Corneleianchery Dogwood	6/b&b/6"	Celtis occidentalis	
Sweetgum	3/b&b/2.5"	Cornus mas		Kentucky Coffeetree	3/b&b/2.5"
Liquidambar styraciflua		Witchazel	10/b&b/6"	Gymnocladus dioicus	
Shingle Oak	6/b&b/2.5"	Hamamelis virginiana		Sweetgum	11/b&b/2.5"
Quercus imbricaria		Ironwood	7/b&b/2.5"	Liquidambar styraciflua	
Northern Red Oak	12/b&b/2.5"	Ostrya virginiana		Tuliptree	3/b&b/2.5"
Quercus rubra		Total	49	Liriodendron tulipifera	
Total	40	Shrubs		Northern Red Oak	8/b&b/2.5"
Evergreen Trees		Red Chokeberry	26/b&b/30"	Quercus rubra	
Canaertii Juniper	6/b&b/6"	Aronia arbutifolia		Redmond Linden	13/b&b/2.5"
Juniperus virginiana 'Canaertii'		Cardinal Dogwood	8/b&b/30"	Tilia americana 'Redmond'	
Austrian Pine	3/b&b/6"	Cornus sericea		Frontier Elm	3/b&b/2.5"
Pinus nigra		Vernal Witchazel	8/b&b/4"	Ulmus 'Frontier'	
Total	9	Hamamelis vernalis		Total	91
Ornamental Trees		Fragrant Sumac	14/b&b/36"	Evergreen Trees	
Autumn Brilliance Serviceberry	4/b&b/6"	Rhus aromatica		Norway Spruce	13/b&b/6"
Amelanchier grandiflora 'Autumn Brilliance'		Arrowwood Viburnum	14/b&b/36"	Picea abies	
River Birch	5/b&b/8-10" multi	Viburnum dentatum		Austrian Pine	5/b&b/6"
Betula nigra		Nannyberry	4/b&b/4"	Pinus nigra	
Thornless Hawthorn	4/b&b/2.0"	Viburnum lentago		Eastern White Pine	8/b&b/6"
Crataegus crusgalli inermis		Total	74	Pinus strobus	
Prairiefire Crabapple	13/b&b/2.0"	Duke Parkway Plant List		Common Baldcypress	7/b&b/6"
Malus 'Prairiefire'		Trees		Taxodium distichum	
Blackhaw Viburnum	4/b&b/6"	Autumn Blaze Maple	15/b&b/2.5"	Total	33
Viburnum prunifolium		Acer freemanii 'Freemanii'		Ornamental Trees	
Total	30	Miyabe Maple	11/b&b/2.5"	Apple Serviceberry	9/b&b/6"
Shrubs		Acer saccharum 'Green Mt.		Amelanchier grandiflora	
Red Chokeberry	8/b&b/30"	Green Mt. Sugar Maple	18/b&b/2.5"	River Birch	18/b&b/10"
Aronia arbutifolia		Acer saccharum 'Green Mt.		Betula nigra 'Heritage'	
Cardinal Dogwood	23/b&b/30"	Shademaster Honeylocust	5/b&b/2.5"	Eastern Redbud	5/b&b/2.5"
Cornus sericea 'Cardinal'		Gleditsia triacanthos inermis 'Shademaster'		Cercis canadensis	
Eastern Wahoo	8/b&b/30"	Greenspire Linden	24/b&b/2.5"	Blackhaw Viburnum	7/b&b/6"
Euonymus atropurpureus		Tilia cordata 'Greenspire'		Viburnum prunifolium	
Fragrant Sumac	18/b&b/30"	Silver Linden	13/b&b/2.5"	Total	32
Rhus aromatica		Tilia tomentosa		Shrubs	
Arrowwood Viburnum	24/b&b/30"	Accolade Elm	6/b&b/2.5"	Black Chokeberry	14/b&b/30"
Viburnum dentatum		Ulmus 'Morton'		Aronia melanocarpa	
Total	81	Pioneer Elm	13/b&b/2.5"	Summersweet Clethra	32/b&b/30"
Ulmus carpinifolia 'Pioneer'		Frontier Elm	12/b&b/2.5"	Clethra alnifolia 'Summersweet'	
Ulmus parvifolia 'Frontier'		Total	117	Cardinal Dogwood	17/b&b/30"
Total				Cornus sericea 'Cardinal'	
				Eastern Wahoo	20/b&b/30"
				Euonymus atropurpureus	
				Fragrant sumac	37/b&b/30"
				Rhus aromatica	
				Arrowwood Viburnum	10/b&b/30"
				Viburnum dentatum	
				Total	130

**ISSUANCES**

#	Description	Date
1	COA Review	05/26/2015

**DRAWING INFORMATION**

Scale: 1"=50'  
Date: 04/28/2015  
Checked By: SMR/BMB  
Drawn By: BMB / RLS  
Duke Realty Job #: -----  
A/E Job #: 41516

**DRAWING / SHEET TITLE**

**DETAILS AND PLANT LIST**

SHEET NUMBER