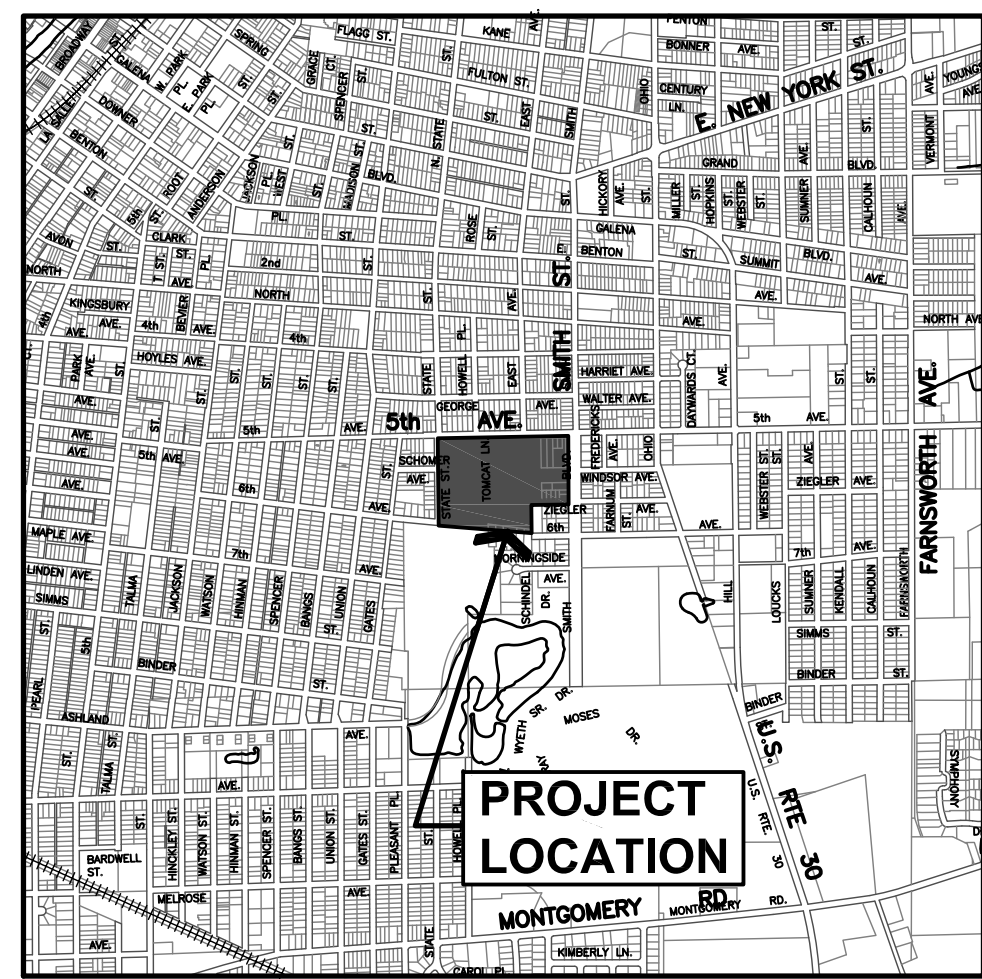
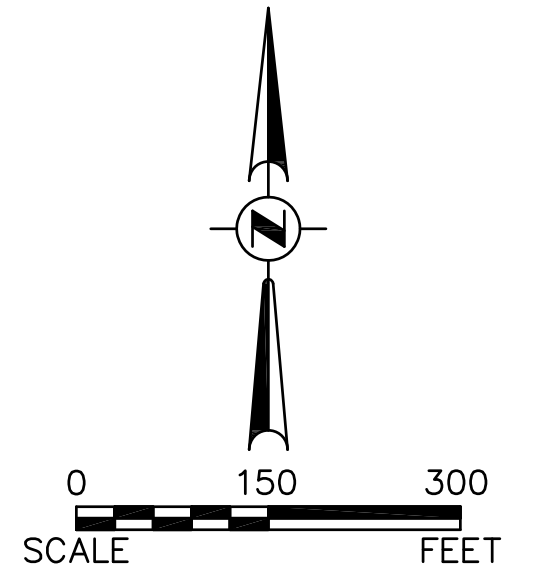


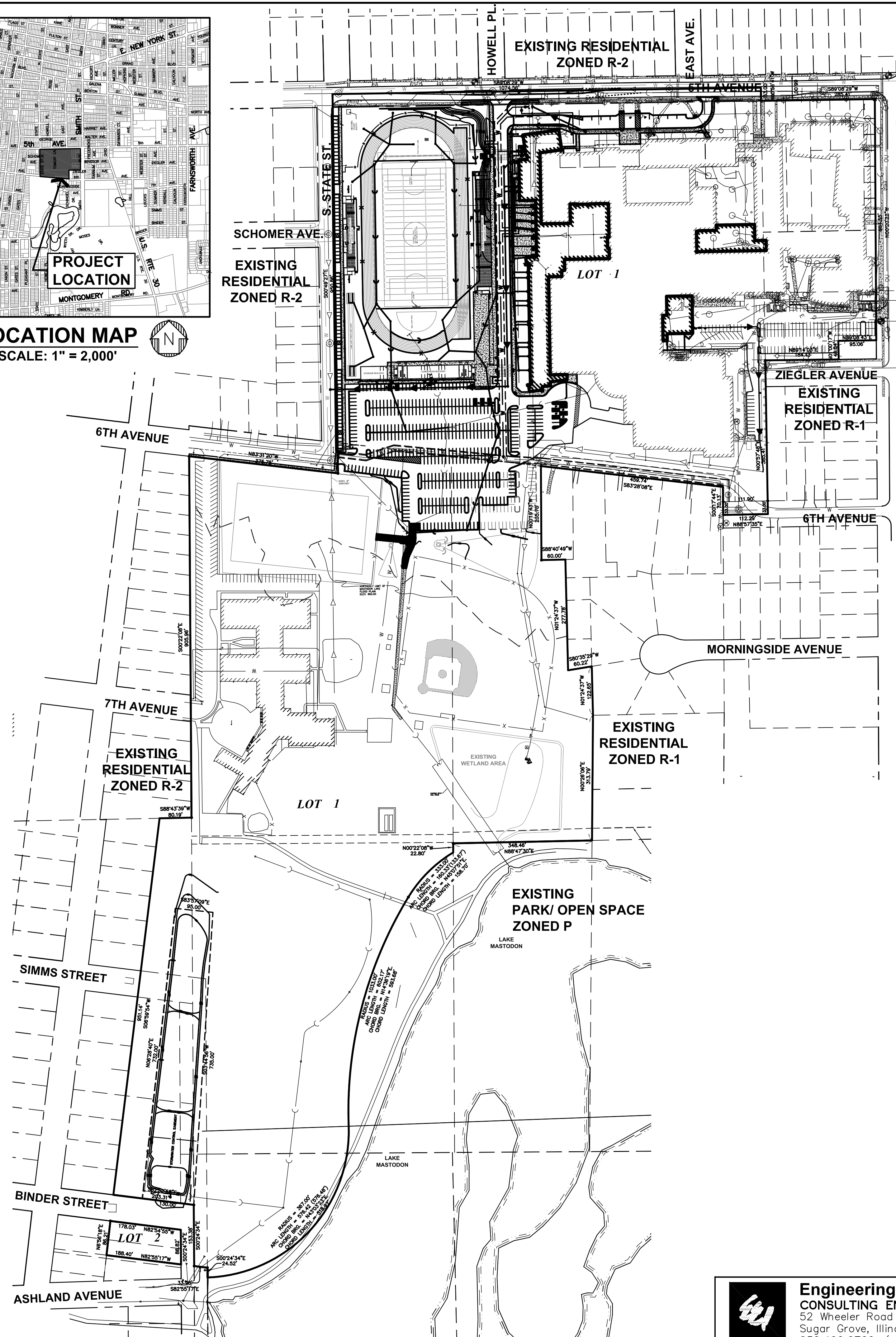
FINAL PLAN

FOR
**EAST AURORA HIGH SCHOOL
 DISTRICT #131
 EXPANSION/RENOVATION**

500 TOMCAT LANE
 CITY OF AURORA
 KANE COUNTY, ILLINOIS 60505



LOCATION MAP
 SCALE: 1" = 2,000'



LEGEND

EXISTING	DESCRIPTION	PROPOSED
	SANITARY SEWER	
	STORM SEWER	
	END SECTION	
	WATER MAIN & SIZE	
	WATER SERVICE & BOX	
	SEWER SERVICE	
	CONTOUR	
	GAS MAIN	
	TELEPHONE CABLE	
	FIBER OPTIC	
	SILT FENCE	
	MANHOLE	
	CATCH BASIN	
	INLET	
	HYDRANT	
	VALVE VAULT	
	TREE	
	ELEVATION	
	TRENCH BACKFILL	
	STREET LIGHT	
	SIGNS	
	FOUND IRON PIPE	
	GUY WIRE	
	FLAG POLE	
	UTILITY POLE	
	UTILITY PEDESTAL	
	HANDHOLE	
	ITEM DESIGNATED FOR REMOVAL	
	TREE PROTECTION REQUIRED	
	BITUMINOUS PAVEMENT	
	CONCRETE	
	GRAVEL	
	DEPRESSED C & G	
	REVERSE PITCH C & G	
	CURB OPENING	

Description	Value	Unit	Description	Value	Unit
a) Tax/Parcel Identification Number(s) (PINs): 15-26-351-003, 15-26-326-001 thru 006; 15-26-327-001 thru 006 & 008; 15-27-479-013; 15-27-483-012 & 014; 15-34-229-001; 15-35-101-002 and 15-35-101-011			j) Total Number of Residential Dwelling Units	0	units
			i. Gross Density	0.00	du/acre
			ii. Net Density	0.00	Net Density
b) Proposed land use(s): Public High school			k) Number of Single Family Dwelling Units	0	units
			i. Gross Density	0.00	du/acre
			ii. Net Density	0.00	Net Density
			iii. Unit Square Footage (average)	-	square feet
			iv. Bedroom Mx	0%	% 1 bdr
c) Total Property Size	62.52	Acres		0%	% 2 bdr
d) Total Lot Coverage (buildings and pavement)	2,723,190	Square Feet		0%	% 3 bdr
e) Open space / landscaping	1,009,244	Square Feet		0%	% 4 bdr
	37%	Percent	v. Number of Single Family Corner Lots	0	units
	1,713,946	Square Feet	l) Number of Single Family Attached Dwelling Units	0	units
f) Land to be dedicated to the School District	63%	Percent	i. Gross Density	0.00	du/acre
g) Land to be dedicated to the Park District	0	Acres	ii. Net Density	0.00	Net Density
h) Number of parking spaces provided (individually accessible)	0	Acres	iii. Unit Square Footage (average)	-	square feet
i. surface parking lot	702	spaces	iv. Bedroom Mx	0%	% 1 bdr
perpendicular	702	spaces		0%	% 2 bdr
parallel	600	spaces		0%	% 3 bdr
angled	8	spaces		0%	% 4 bdr
handicapped	75	spaces	m) Number of Multifamily Dwelling Units	0	units
ii. enclosed	19	spaces	i. Gross Density	0.00	du/acre
iii. bike	0	spaces	ii. Net Density	0.00	Net Density
i) Number of buildings	0	racks	iii. Unit Square Footage (average)	-	square feet
i. Number of stories	5		iv. Bedroom Mx	0%	Efficiency
ii. Building Square Footage (typical)	2	stories		0%	% 1 bdr
iii. Square Footage of retail floor area	523,492	square feet		0%	% 2 bdr
iv. First Floor Building Square Footage (typical)	652	square feet		0%	% 3 bdr
	430,034	Linear Footage			

Noted: September 16, 2016 @ 11:23 AM By: Jim Schmitt - Tab: (1) Final Plan 24x36
 COPYRIGHT © 2016 ENGINEERING ENTERPRISES, INC.

Engineering Enterprises, Inc.
 CONSULTING ENGINEERS
 52 Wheeler Road
 Sugar Grove, Illinois 60554
 630.466.6700 / www.eeiweb.com

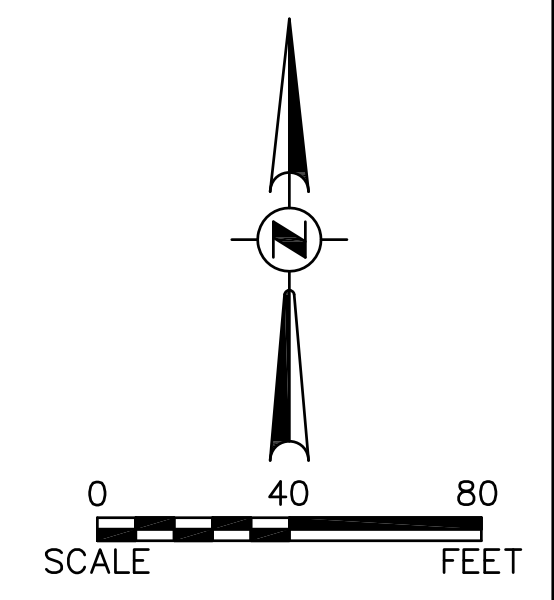
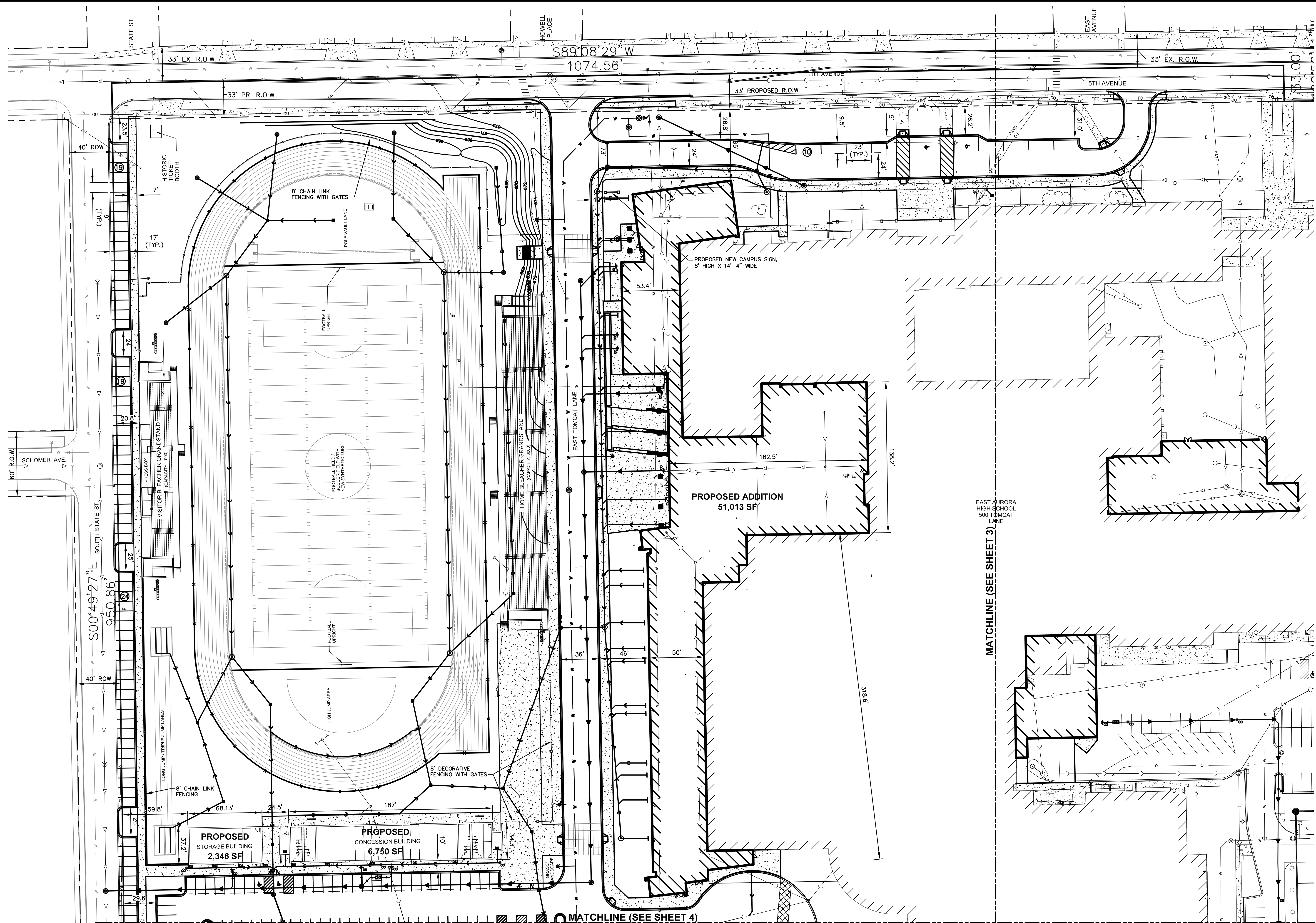
PETITIONER:
 EAST AURORA HIGH SCHOOL DISTRICT #131
 417 FIFTH STREET, AURORA, IL 60505

FINAL PLAN
 EAST AURORA HIGH SCHOOL DISTRICT #131
 500 TOMCAT LANE, AURORA, IL 60505
 EXPANSION/RENOVATION

REV. DATE:	ORG. DATE:
07/29/16	05/23/16
08/03/16	PROJECT NO: SD1602
09/02/16	FILE NO: SD1602-FINAL.DWGSD1602-FINAL.DWG
09/16/16	SHEET 1 OF 7

Plotted: September 6, 2016 @ 1:27 PM By: Larry Nelson - Tab: (2) Final Plan 24x36

COPYRIGHT © 2016 ENGINEERING ENTERPRISES, INC.



MATCHLINE (SEE SHEET 4)

MATCHLINE (SEE SHEET 3)

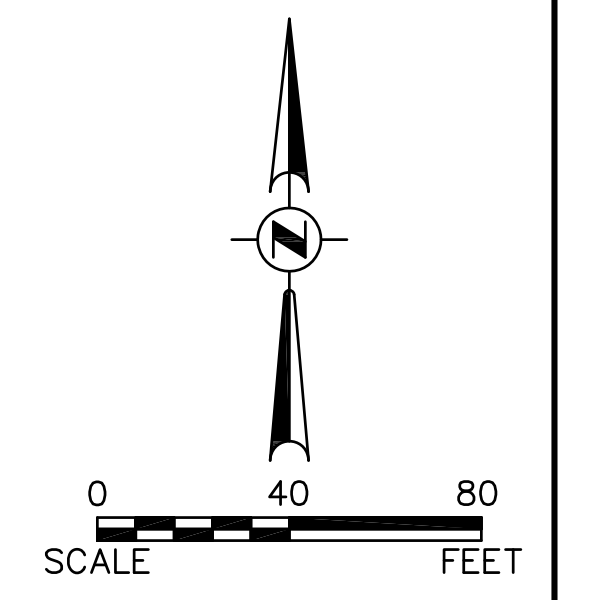
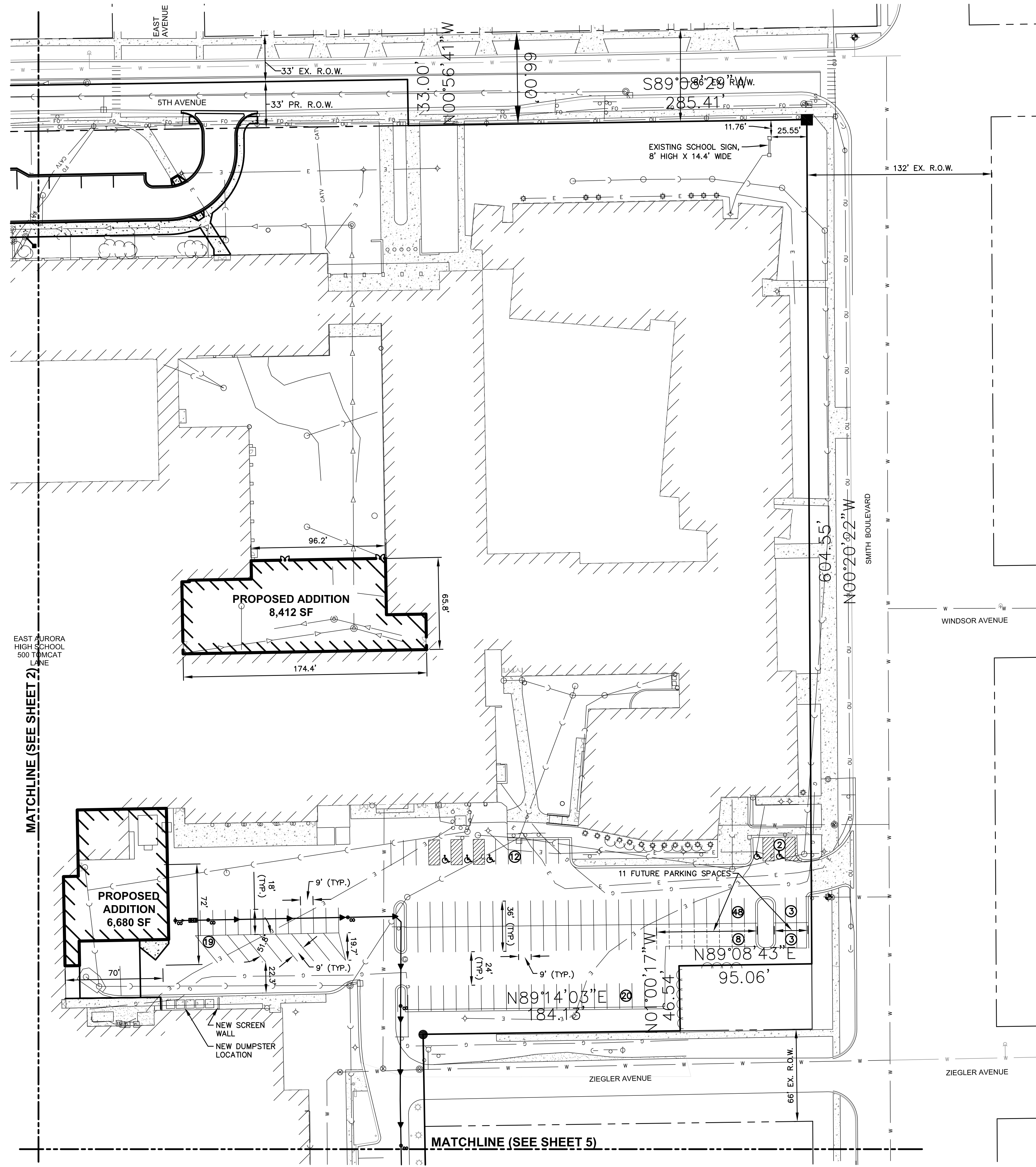
Engineering Enterprises, Inc.
 CONSULTING ENGINEERS
 52 Wheeler Road
 Sugar Grove, Illinois 60554
 630.466.6700 / www.eeiweb.com

PETITIONER:
 EAST AURORA HIGH SCHOOL DISTRICT #131
 417 FIFTH STREET, AURORA, IL 60505

FINAL PLAN
 EAST AURORA HIGH SCHOOL DISTRICT #131
 500 TOMCAT LANE, AURORA, IL 60505
 EXPANSION/RENOVATION

REV. DATE:	ORG. DATE:
07/26/16	05/23/16
07/29/16	PROJECT NO: SD1602
08/03/16	FILE NO: SD1602-FINAL.DWGSD1602-FINAL.DWG
09/02/16	SHEET 2 OF 7

Path: H:\S0594PROJ\S01602\DWG_FINAL_ENG\S01602-FINAL



MATCHLINE (SEE SHEET 2)

MATCHLINE (SEE SHEET 5)

Plotted: September 6, 2016 @ 12:57 PM By: Larry Nolan - Tab: (3) Final Plan 24x36

COPYRIGHT © 2016 ENGINEERING ENTERPRISES, INC.

Engineering Enterprises, Inc.
 CONSULTING ENGINEERS
 52 Wheeler Road
 Sugar Grove, Illinois 60554
 630.466.6700 / www.eeiweb.com

PETITIONER:
 EAST AURORA HIGH SCHOOL DISTRICT #131
 417 FIFTH STREET, AURORA, IL 60505

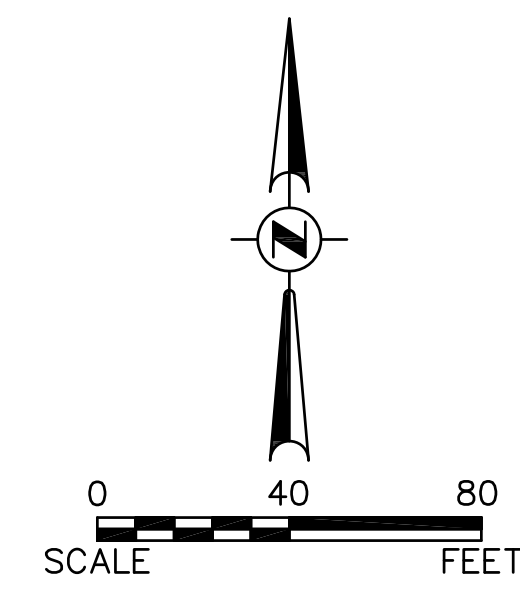
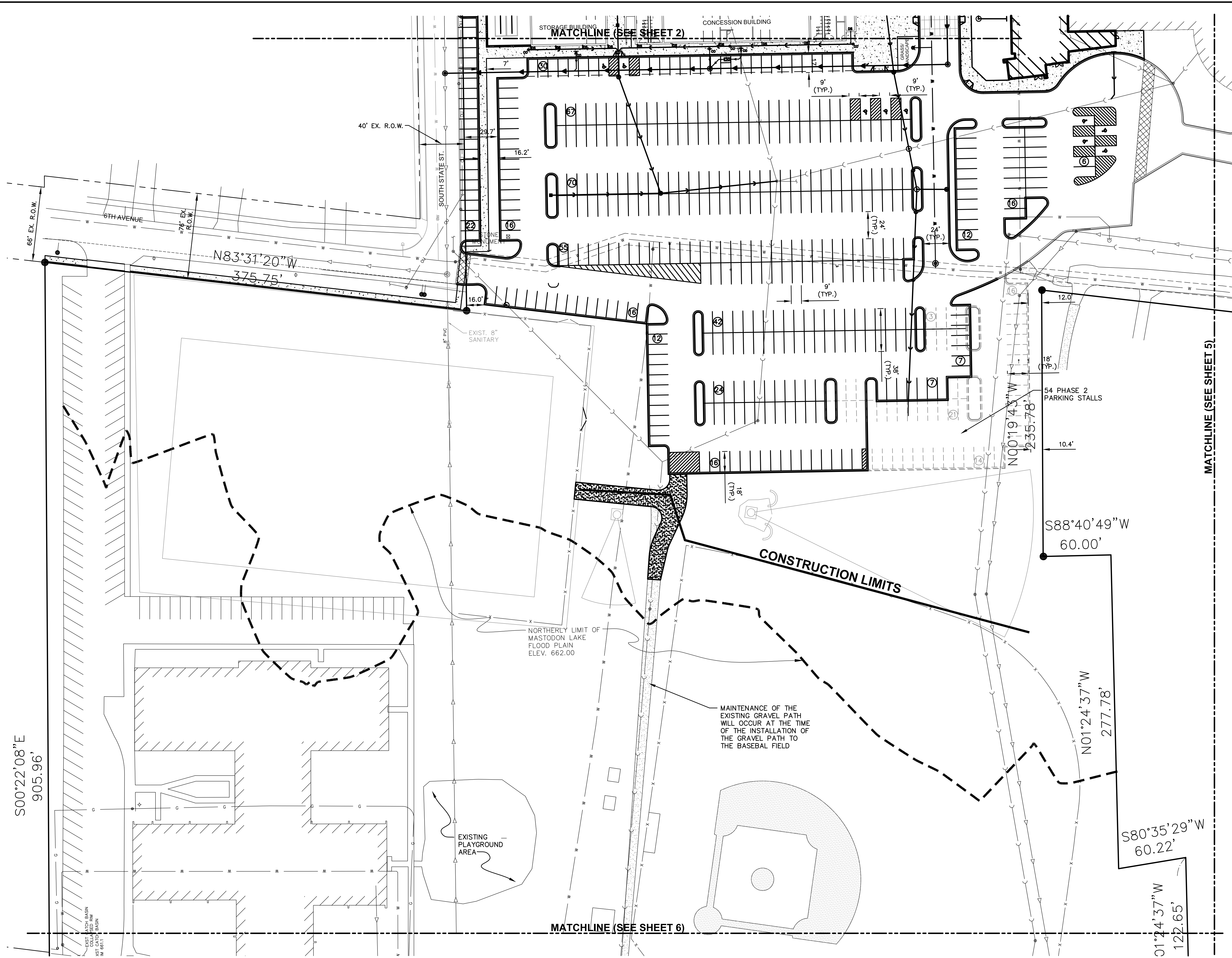
FINAL PLAN
 EAST AURORA HIGH SCHOOL DISTRICT #131
 500 TOMCAT LANE, AURORA, IL 60505
 EXPANSION/RENOVATION

REV. DATE:	07/26/16	ORG. DATE:	05/23/16
	07/29/16	PROJECT NO:	SD1602
	08/03/16	FILE NO:	SD1602-FINALDWGSD1602-FINALDWG
	09/02/16	SHEET	3 OF 7

P:\P\H\S\SD1602\FINAL\DWG\SD1602-FINAL.DWG

Plotted: September 6, 2016 @ 1:31 PM By: Larry Notten - Tab: (4) Final Plan 24x36

COPYRIGHT © 2016 ENGINEERING ENTERPRISES, INC.



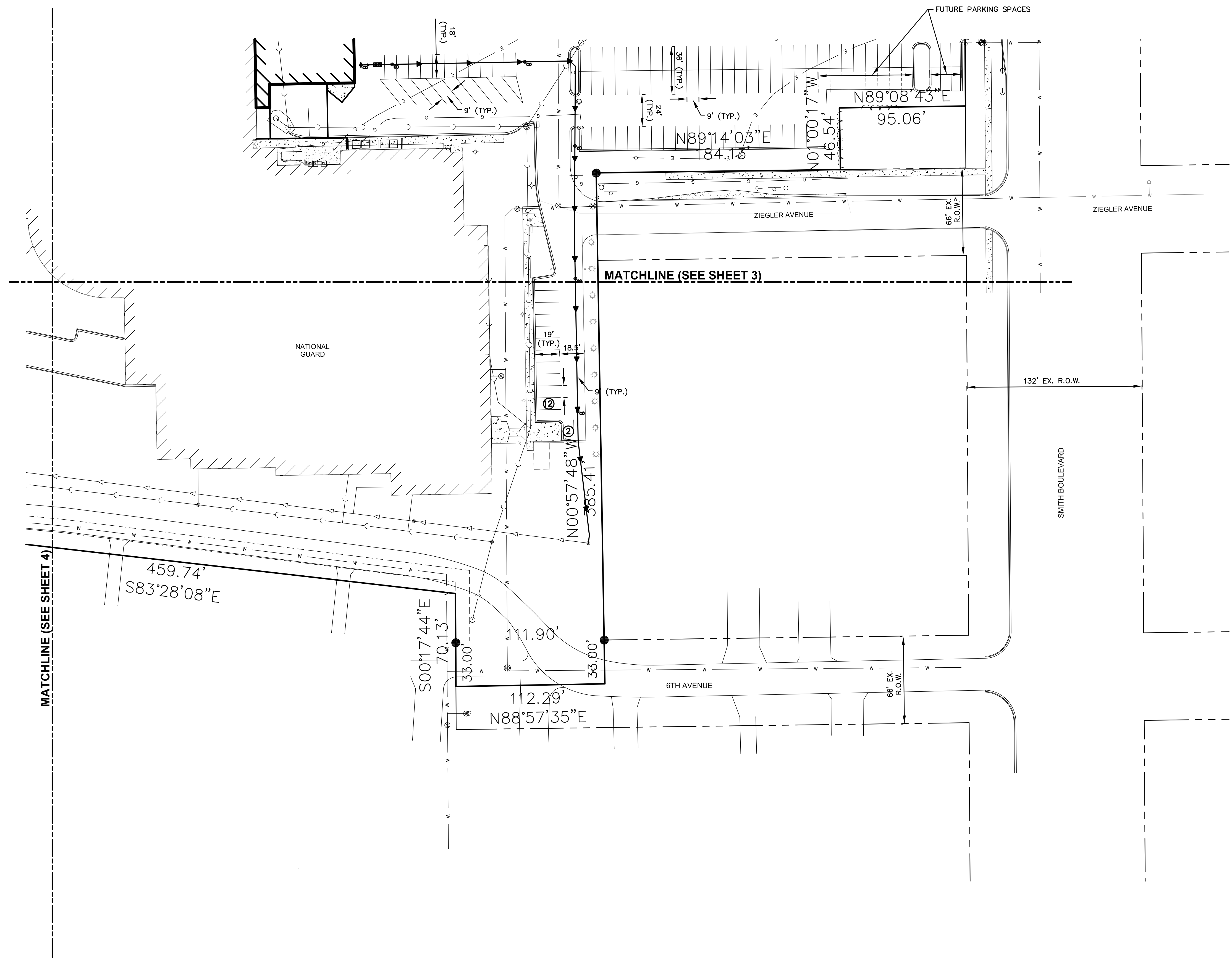
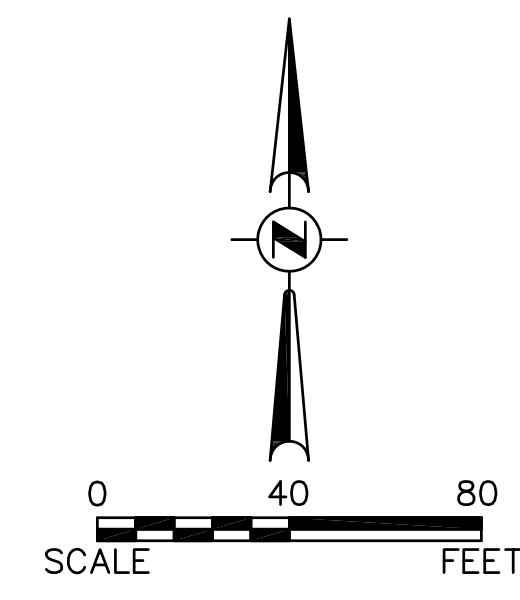
Engineering Enterprises, Inc.
 CONSULTING ENGINEERS
 52 Wheeler Road
 Sugar Grove, Illinois 60554
 630.466.6700 / www.eeiweb.com

PETITIONER:
 EAST AURORA HIGH SCHOOL DISTRICT #131
 417 FIFTH STREET, AURORA, IL 60505

FINAL PLAN
 EAST AURORA HIGH SCHOOL DISTRICT #131
 500 TOMCAT LANE, AURORA, IL 60505
 EXPANSION/RENOVATION

REV. DATE:	ORG. DATE:
07/26/16	05/23/16
07/29/16	PROJECT NO: SD1602
08/03/16	FILE NO: SD1602-FINAL.DWG
09/02/16	SHEET 4 OF 7

Path: H:\SD1602\SD1602.DWG FINAL ENG SD1602-FINAL



Plotted: September 6, 2016 @ 12:57 PM By: Larry Nolan - Tab: (5) Final Plan 24x36
 COPYRIGHT © 2016 ENGINEERING ENTERPRISES, INC.


Engineering Enterprises, Inc.
 CONSULTING ENGINEERS
 52 Wheeler Road
 Sugar Grove, Illinois 60554
 630.466.6700 / www.eeiweb.com

PETITIONER:
 EAST AURORA HIGH SCHOOL DISTRICT #131
 417 FIFTH STREET, AURORA, IL 60505

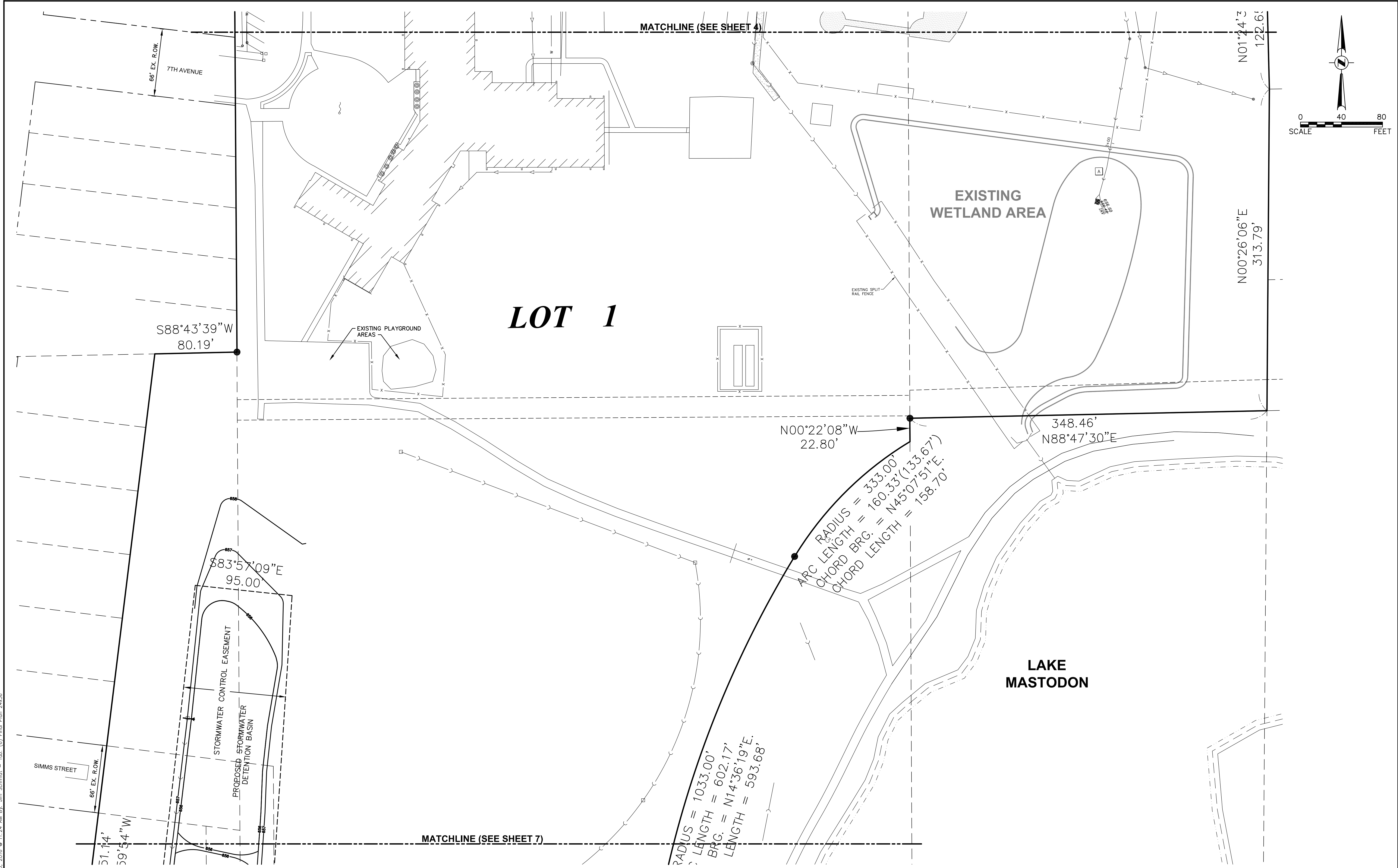
FINAL PLAN
 EAST AURORA HIGH SCHOOL DISTRICT #131
 500 TOMCAT LANE, AURORA, IL 60505
 EXPANSION/RENOVATION

REV. DATE:	ORG. DATE:
07/26/16	05/23/16
07/29/16	PROJECT NO: SD1602
08/03/16	FILE NO: SD1602-FINAL.DWGSD1602-FINAL.DWG
09/02/16	SHEET 5 OF 7

Path: H:\S05RPROJ\SD1602\DWG_FINAL_ENG\SD1602-FINAL

Plotted: September 16, 2016 @ 11:24 AM By: Jim Schmitt - Tab: (6) Final Plan 24x36

COPYRIGHT © 2016 ENGINEERING ENTERPRISES, INC.



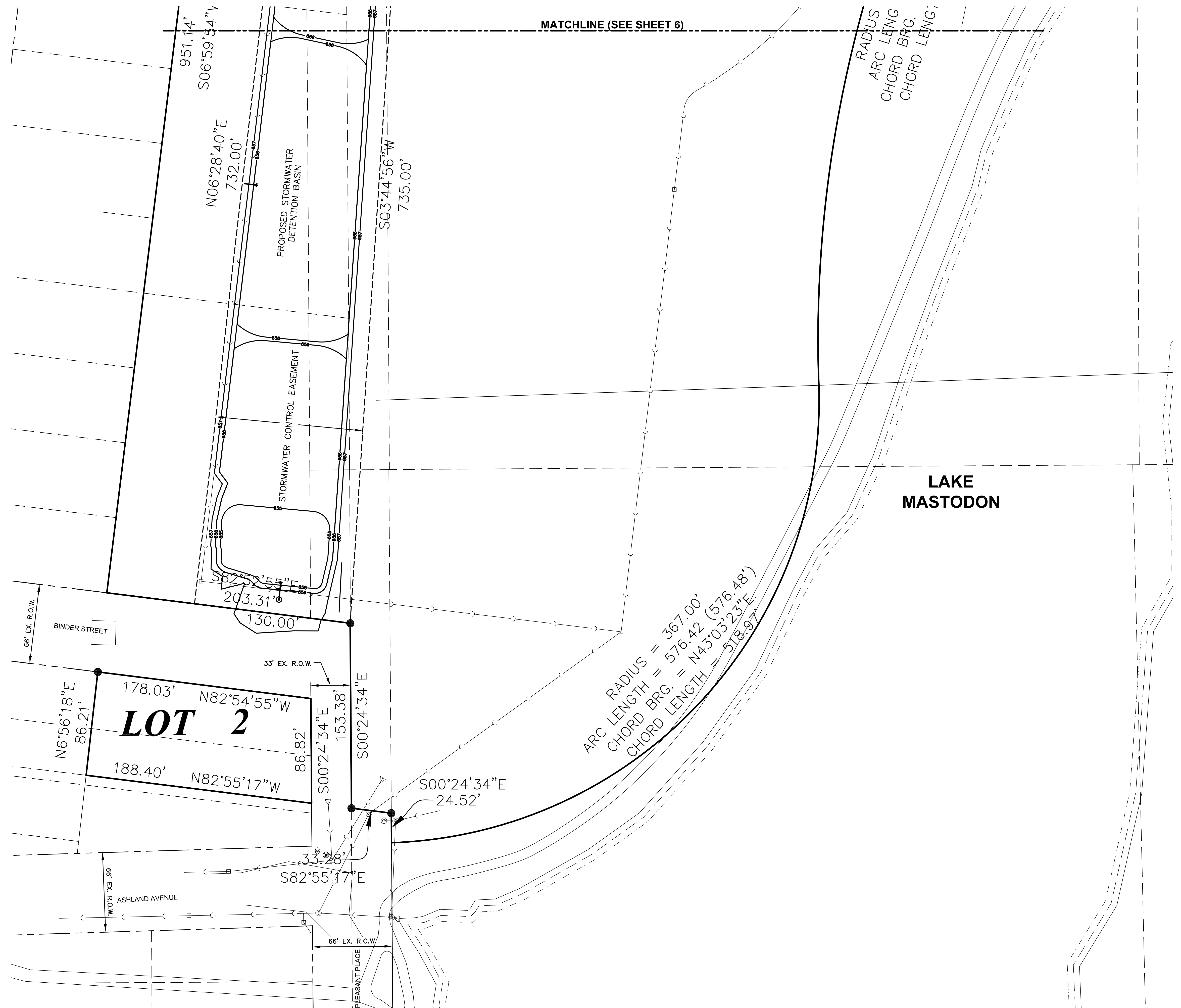
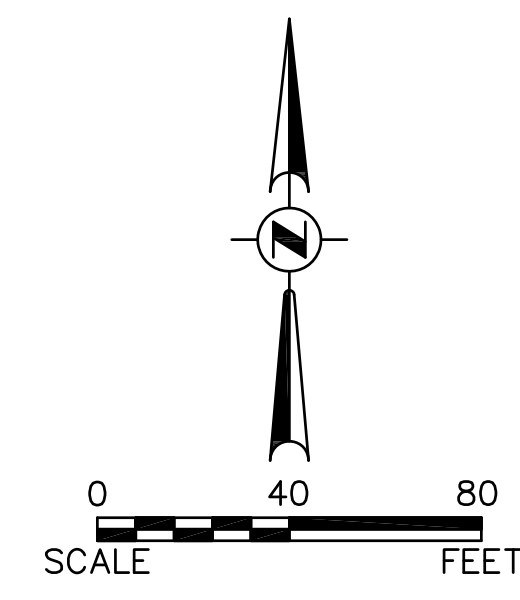
Engineering Enterprises, Inc.
CONSULTING ENGINEERS
 52 Wheeler Road
 Sugar Grove, Illinois 60554
 630.466.6700 / www.eeiweb.com

PETITIONER:
 EAST AURORA HIGH SCHOOL DISTRICT #131
 417 FIFTH STREET, AURORA, IL 60505

FINAL PLAN
 EAST AURORA HIGH SCHOOL DISTRICT #131
 500 TOMCAT LANE, AURORA, IL 60505
 EXPANSION/RENOVATION

REV. DATE:	ORG. DATE:
07/29/16	05/23/16
08/03/16	PROJECT NO: SD1602
09/02/16	FILE NO: SD1602-FINAL.DWGSD1602-FINAL.DWG
09/16/16	SHEET 6 OF 7

Path: H:\SD1602\PROJ\SD1602.DWG FINAL ENGR SD1602-FINAL



Plotted: September 16, 2016 @ 11:25 AM By: Jim Schmidt - Tab: (7) Final Plan 24x36
 COPYRIGHT © 2016 ENGINEERING ENTERPRISES, INC.


Engineering Enterprises, Inc.
 CONSULTING ENGINEERS
 52 Wheeler Road
 Sugar Grove, Illinois 60554
 630.466.6700 / www.eeiweb.com

PETITIONER:
 EAST AURORA HIGH SCHOOL DISTRICT #131
 417 FIFTH STREET, AURORA, IL 60505

FINAL PLAN
 EAST AURORA HIGH SCHOOL DISTRICT #131
 500 TOMCAT LANE, AURORA, IL 60505
 EXPANSION/RENOVATION

REV. DATE:	ORG. DATE:	05/23/16
07/29/16	PROJECT NO:	SD1602
08/03/16	FILE NO:	SD1602-FINALDWGSD1602-FINALDWG
09/02/16		
09/16/16	SHEET	7 OF 7

Path: H:\S05RPROJ\SD1602\DWG_FINAL_ENG\SD1602-FINAL